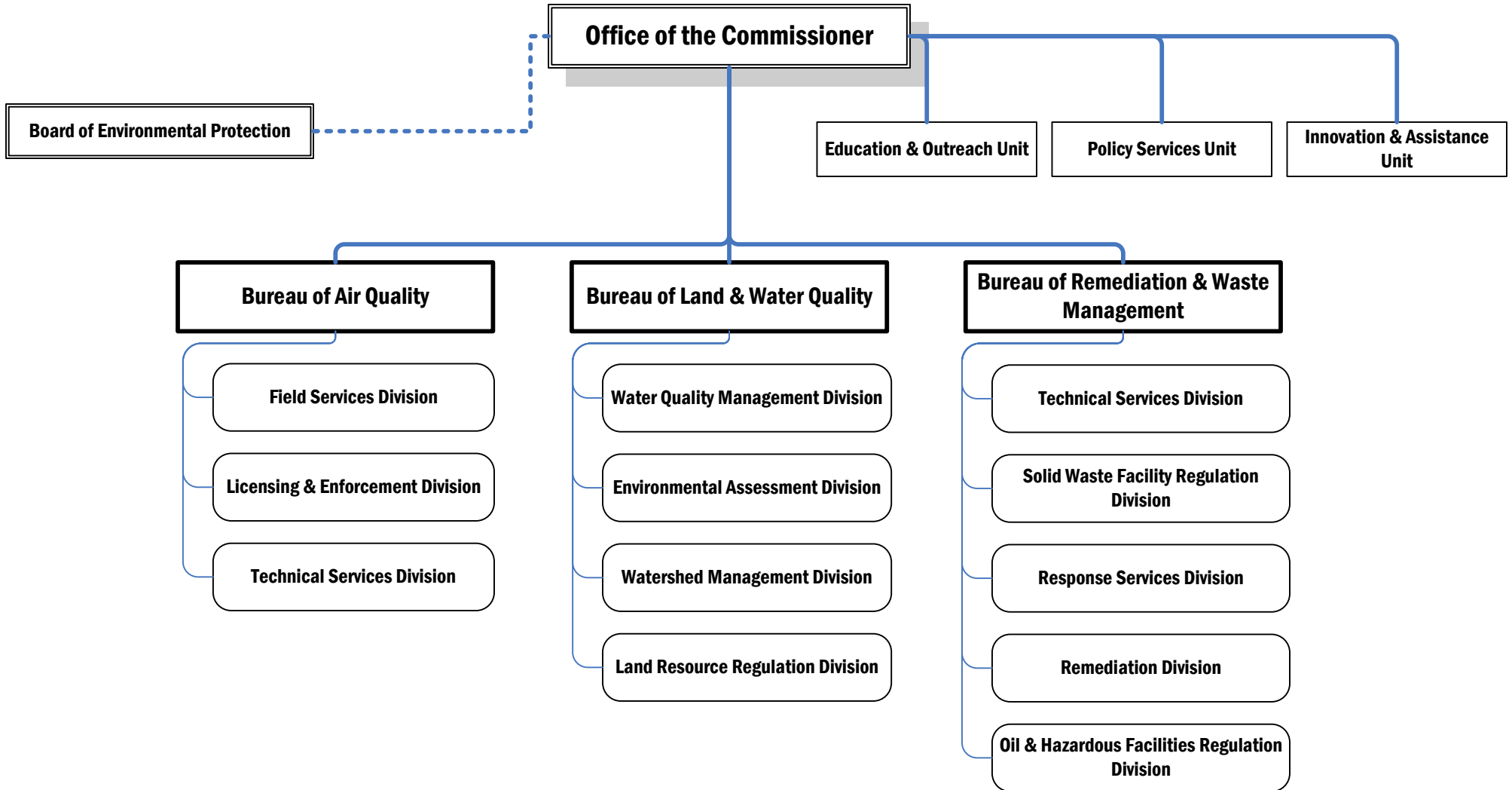


# MAINE DEPARTMENT OF ENVIRONMENTAL PROTECTION

## OVERVIEW OF AGENCY STRUCTURE



# ORGANIZATIONAL CHART - OVERVIEW

## OFFICE OF THE COMMISSIONER:

- **Policy Services Unit**
  - Regulatory Program (enforcement, licensing, compliance monitoring) Oversight*
  - Financial and Resource Oversight*
  - Data System Development Oversight*
  - Public Health and Special Projects Management*
  - Quality Assurance / Quality Control Oversight*
  - District Court Enforcement*
- **Innovation & Assistance Unit**
  - Toxics Reduction Program Management*
  - Environmental Leader Program Management*
  - Innovative initiative (ERP, Clean Government)*
- **Education & Outreach Unit**
  - Legislative Activity Coordination*
  - Media Relations Oversight*
- **Regional Office Management**
  - Bangor, Presque Isle, and Portland*

## BUREAU OF AIR QUALITY:

- **Field Services Division**
  - Air Quality Monitoring*
  - Air Quality Data Reporting*
  - Compliance Monitoring & Complaint Investigations*
- **Licensing & Enforcement Division**
  - Application Processing and Decision Drafting*
  - Enforcement*
  - Stack Testing,*
- **Technical Services Division**
  - Rule Development*
  - Lab Support*
  - SIP Coordination*
  - Data Management & Quality*

## BUREAU OF LAND AND WATER QUALITY:

- **Water Quality Management Division**
  - Wastewater & Hydropower License Application Processing and Decision Drafting*
  - Wastewater Discharge Compliance Monitoring & Complaint Investigations*
  - Wastewater Enforcement*
- **Environmental Assessment Division**
  - Inland and Marine Surface Water Quality Monitoring & Reporting*
  - Biomonitoring*
  - Water Quality Standard Determinations*
  - Surface and Groundwater Classification*
- **Watershed Management Division**
  - Watershed Studies and Reporting*
  - Non-Point Source Pollution Programs*
  - MPDES Stormwater Program Administration*
- **Land Resource Regulation Division**
  - Land Development License Application Processing and Decision Drafting*
  - Land Development Compliance Monitoring & Enforcement*
  - Shoreland Zoning*

## BUREAU OF REMEDIATION AND WASTE MANAGEMENT:

- **Technical Services Division**
  - License Application Engineering and Geology Evaluations*
  - Site Investigation and Cleanup Engineering and Geology Evaluations*
  - Solid Waste Facility Technical Assistance to Municipalities*
  - Contaminated Site Project Management*
- **Solid Waste Facility Regulation Division**
  - Solid Waste Facility License Application Evaluation and Decision Drafting*
  - Compliance monitoring and Complaint Investigation*
  - Asbestos and Lead Abatement Program Management*
  - Education and Outreach*
- **Response Services Division**
  - Emergency Response to Oil and Hazardous Material Spills*
  - Contaminated Site Project Management*
  - UST Tank Removal and Installation Oversight*
  - Contingency Plan and Response Protocol Development*
  - First Responder and Contaminated Site Management Training*
- **Remediation Division**
  - Federal and State Long-term Contaminated Site Project Management*
  - VRAP Program Management*
  - Site Investigation, Evaluation, and Ranking*
  - Municipal Landfill Investigation, Evaluation, and Closure Oversight*
- **Oil and Hazardous Waste Facilities Regulation Division**
  - Hazardous Waste Facility License Application Evaluation and Decision Drafting*
  - Compliance monitoring and Complaint Investigation*
  - Hazardous Waste Generator and Transporter Registration*
  - UST Facility Registration and Compliance Monitoring*
  - Education and Outreach*
  - Enforcement*