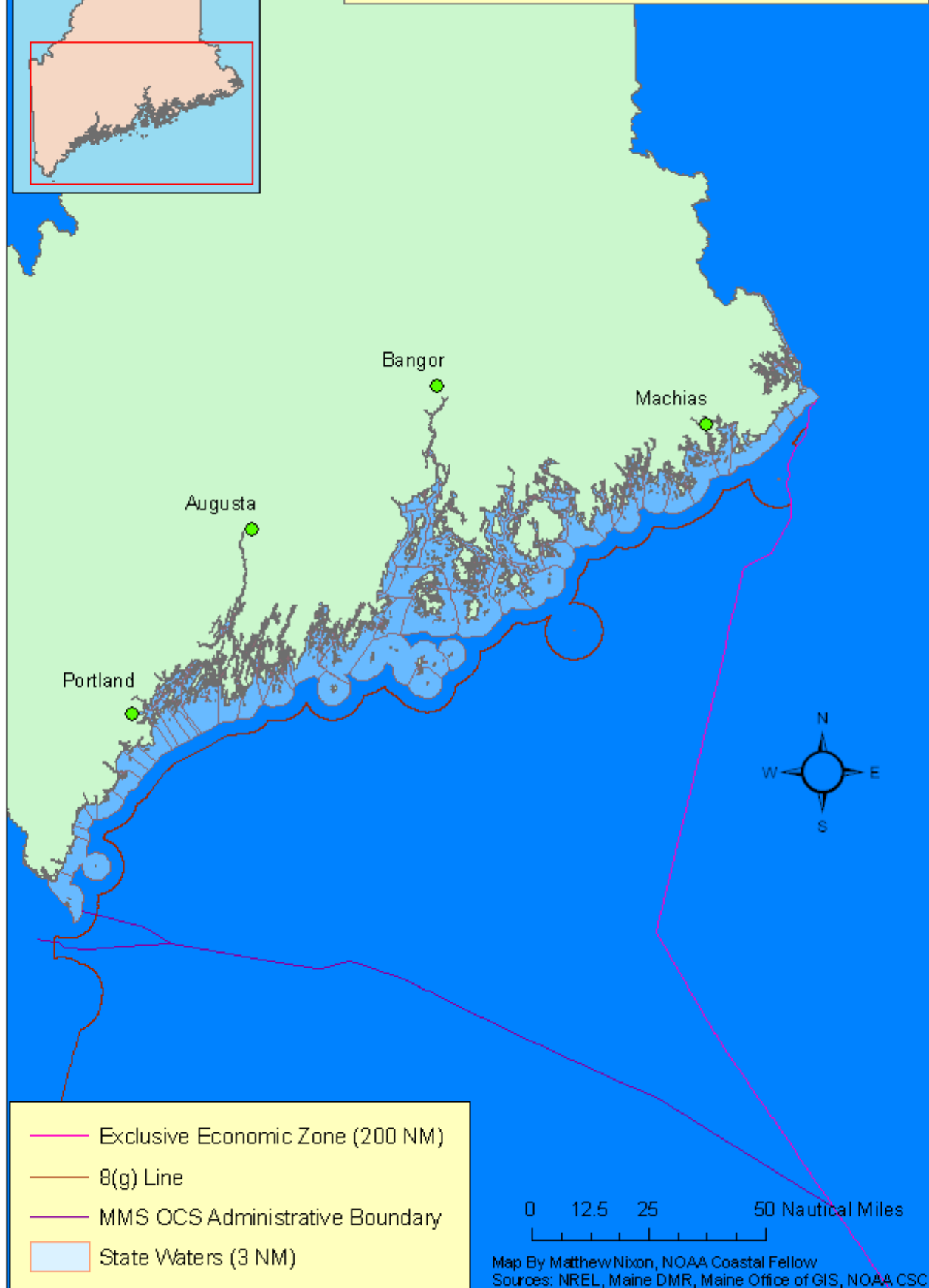
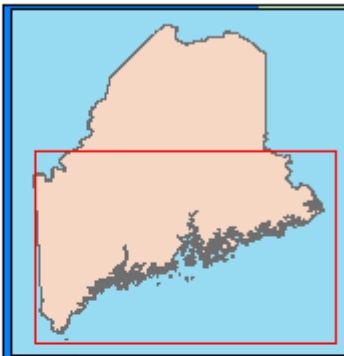


# Maine Offshore Boundaries



- Exclusive Economic Zone (200 NM)
- 8(g) Line
- MMS OCS Administrative Boundary
- State Waters (3 NM)

Map By Matthew Nixon, NOAA Coastal Fellow  
Sources: NREL, Maine DMR, Maine Office of GIS, NOAA CSC