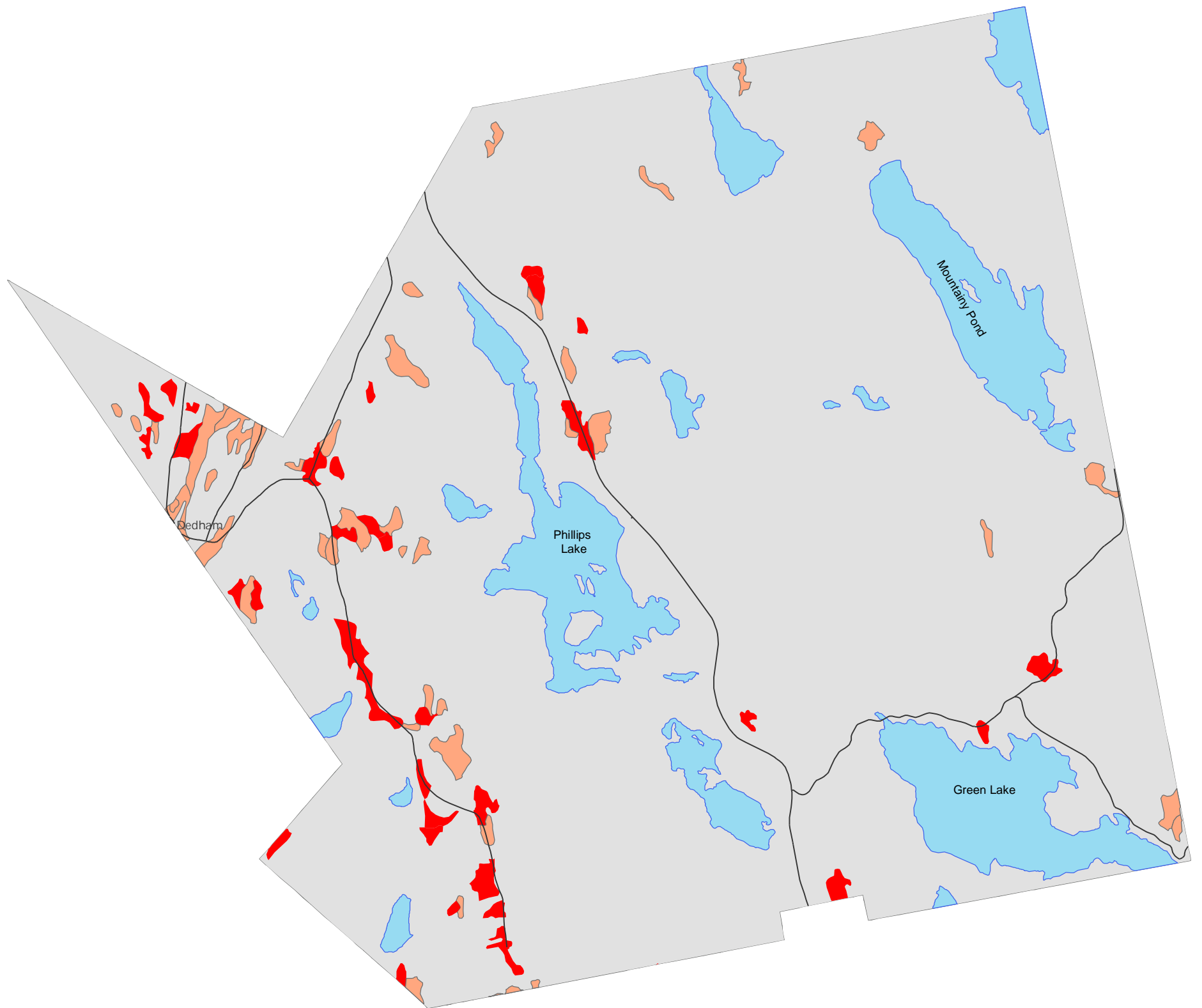


Prime and Important Farmland for Dedham, Maine



Legend

- All areas are prime farmland
- Farmland of statewide importance
- Water
- Roads

Map Symbc	Map Unit Name	Farmland Classification
DaB	Dixfield fine sandy loam, 3 to 8 percent slopes	All areas are prime farmland
DsB	Dixfield-Colonel complex, 3 to 8 percent slopes	All areas are prime farmland
TuB	Tunbridge-Lyman complex, 3 to 8 percent slopes	All areas are prime farmland
AdB	Adams loamy sand, 0 to 8 percent slopes	Farmland of statewide importance
BwC	Buxton silt loam, 8 to 15 percent slopes	Farmland of statewide importance
CSC	Colton-Adams-Sheepscot association, strongly sloping	Farmland of statewide importance
HmB	Hermon-Monadnock complex, 3 to 8 percent slopes	Farmland of statewide importance
LaB	Lamoine silt loam, 3 to 8 percent slopes	Farmland of statewide importance
LbB	Lamoine-Scantic complex, 0 to 8 percent slopes	Farmland of statewide importance
LCB	Lamoine-Scantic-Buxton association, gently sloping	Farmland of statewide importance
MaC	Marlow fine sandy loam, 8 to 15 percent slopes	Farmland of statewide importance
NcB	Nicholville very fine sandy loam, 3 to 8 percent slopes	Farmland of statewide importance
TuC	Tunbridge-Lyman complex, 8 to 15 percent slopes	Farmland of statewide importance
TWC	Tunbridge-Lyman-Marlow complex, strongly sloping	Farmland of statewide importance