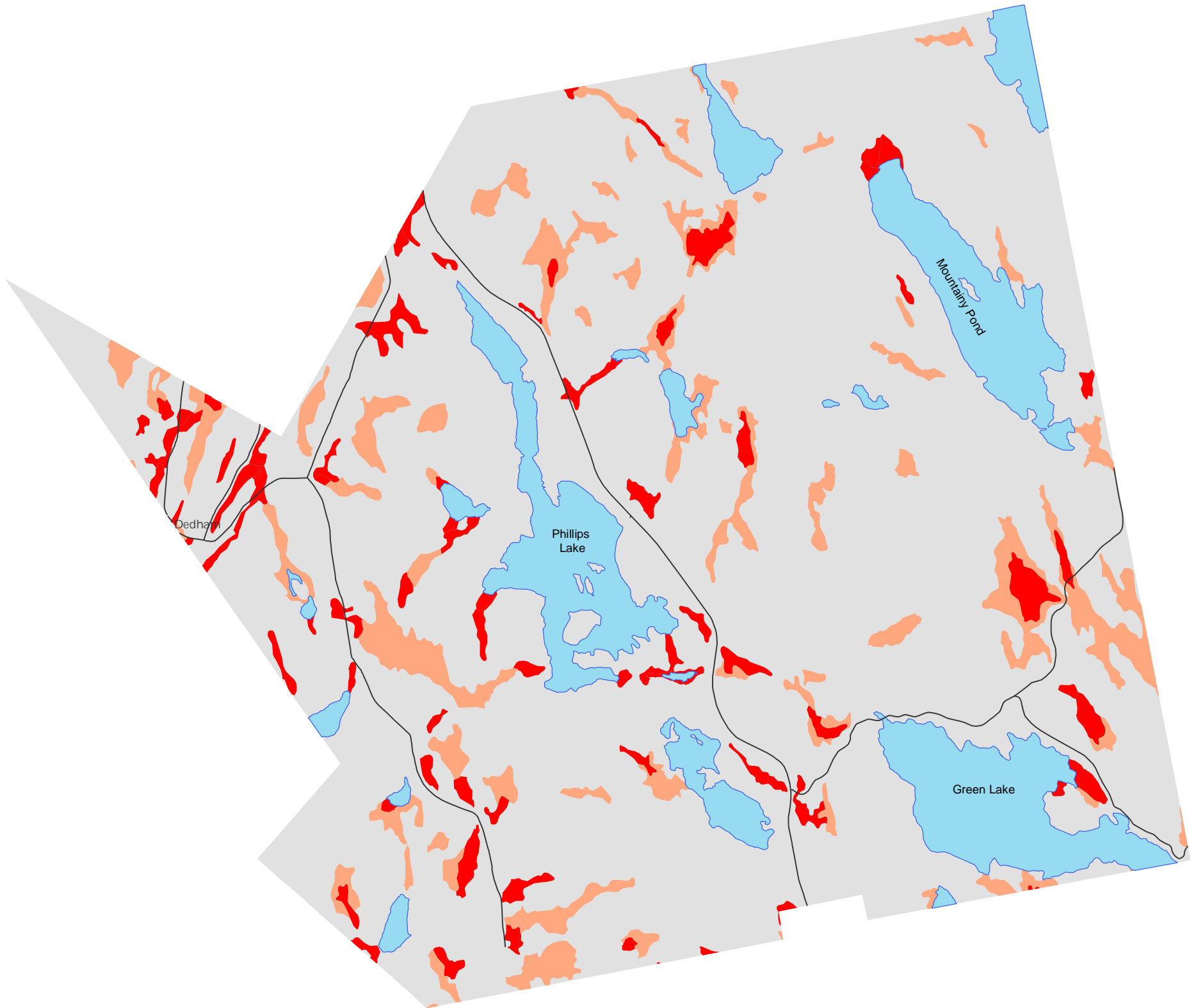


Hydric Soils for Dedham, Maine



Map Symbol	Map Unit Name	Hydric Rating
BfB	Brayton fine sandy loam, 0 to 8 percent slopes	All Hydric
BgB	Brayton fine sandy loam, 0 to 8 percent slopes, very stony	All Hydric
BhB	Brayton fine sandy loam, 0 to 8 percent slopes, rubbly	All Hydric
Ch	Charles silt loam	All Hydric
SB	Scantic-Biddeford association	All Hydric
Wo	Wonsqueak muck, flooded	All Hydric
Ws	Wonsqueak and Bucksport mucks	All Hydric
WT	Wonsqueak, Bucksport, and Sebago soils	All Hydric
BSB	Brayton-Colonel association, gently sloping, very stony	Partially Hydric
BTB	Brayton-Colonel association, gently sloping, rubbly	Partially Hydric
LbB	Lamoine-Scantic complex, 0 to 8 percent slopes	Partially Hydric
LCB	Lamoine-Scantic-Buxton association, gently sloping	Partially Hydric
SdB	Scantic-Lamoine complex, 0 to 8 percent slopes, very stony	Partially Hydric
SEB	Scantic-Lamoine-Dixfield complex, gently sloping, very stony	Partially Hydric
SKC	Schoodic-Rock outcrop-Naskeag complex, rolling	Partially Hydric

Legend

- All Hydric
- Partially Hydric
- Roads
- Water