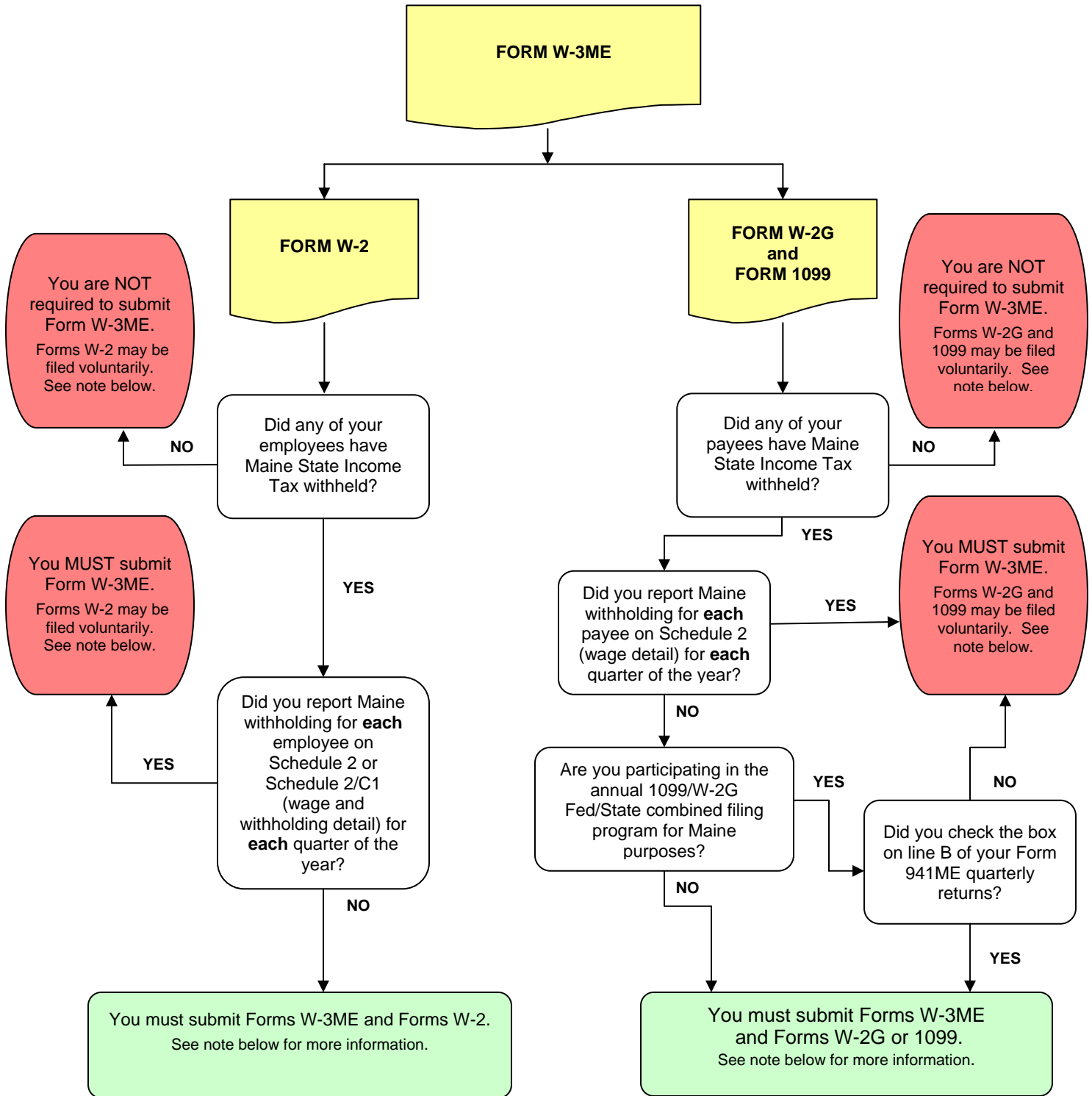


AM I REQUIRED TO FILE FORM W-3ME, OR FORMS W-2, W-2G AND 1099?



NOTE: Do not submit copies of payee statements (Forms W-2, W-2G and 1099) with Form W-3ME. Instead, payee statements must be submitted separately via electronic filing. Form more information about electronic submission of payee statements, see Maine Revenue Services electronic services web page at www.maine.gov/revenue/netfile/gateway2.htm.