

# The Energy Picture in Maine and the Region from 60,000 feet

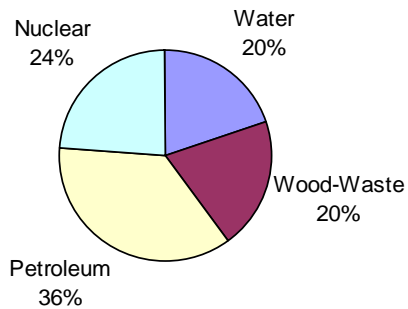
Beth Nagusky  
Director of Energy Independence & Security  
Governor's Office

LURC Meeting  
Brewer, Maine  
December 7, 2005

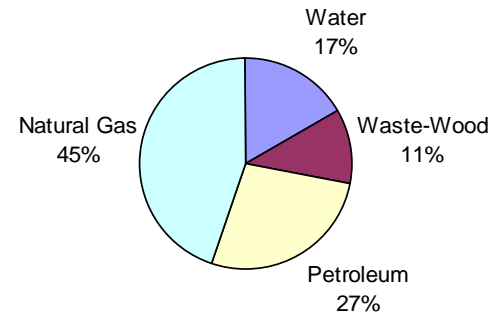


# Maine's Power Mix Has Changed

**1991**

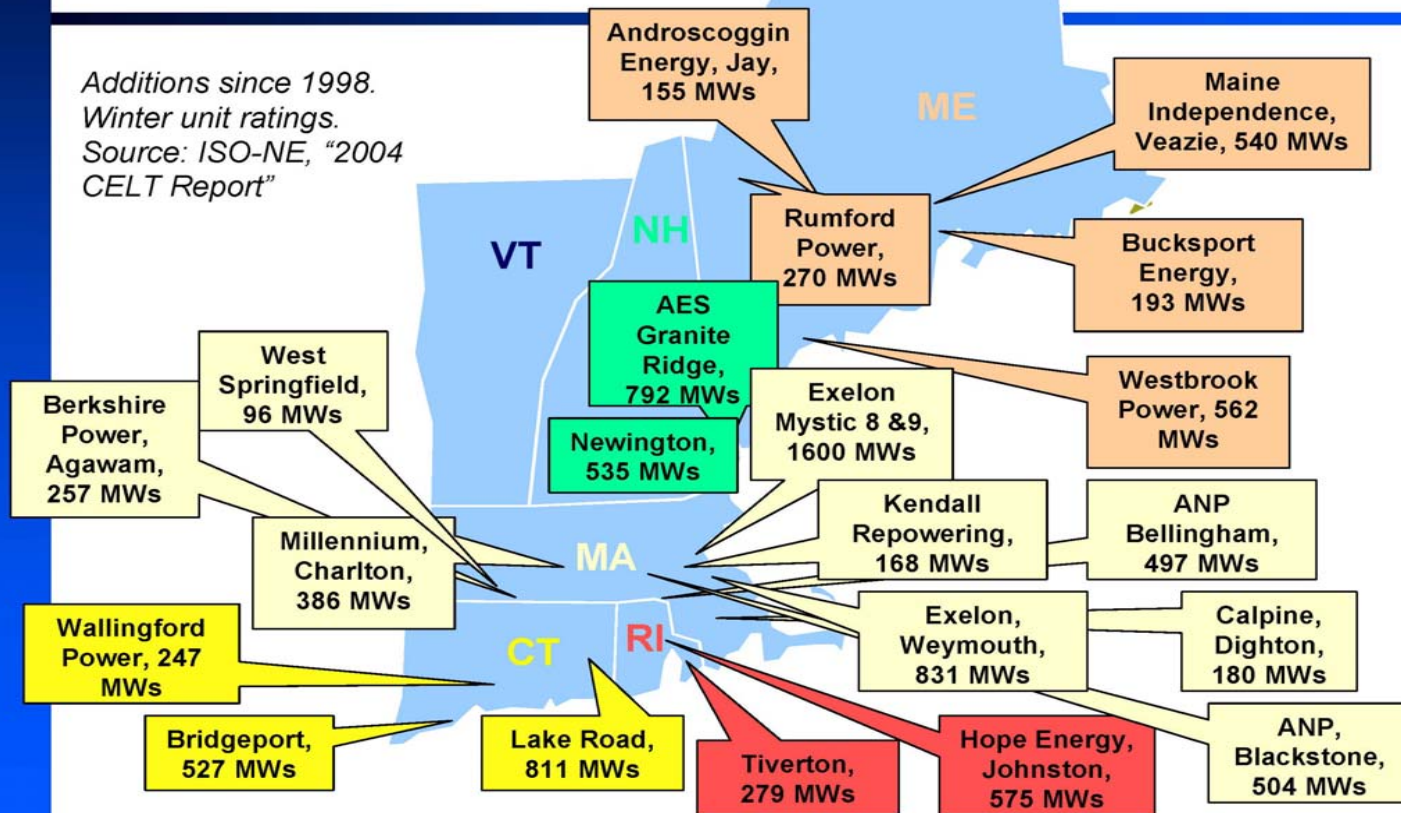


**2003**

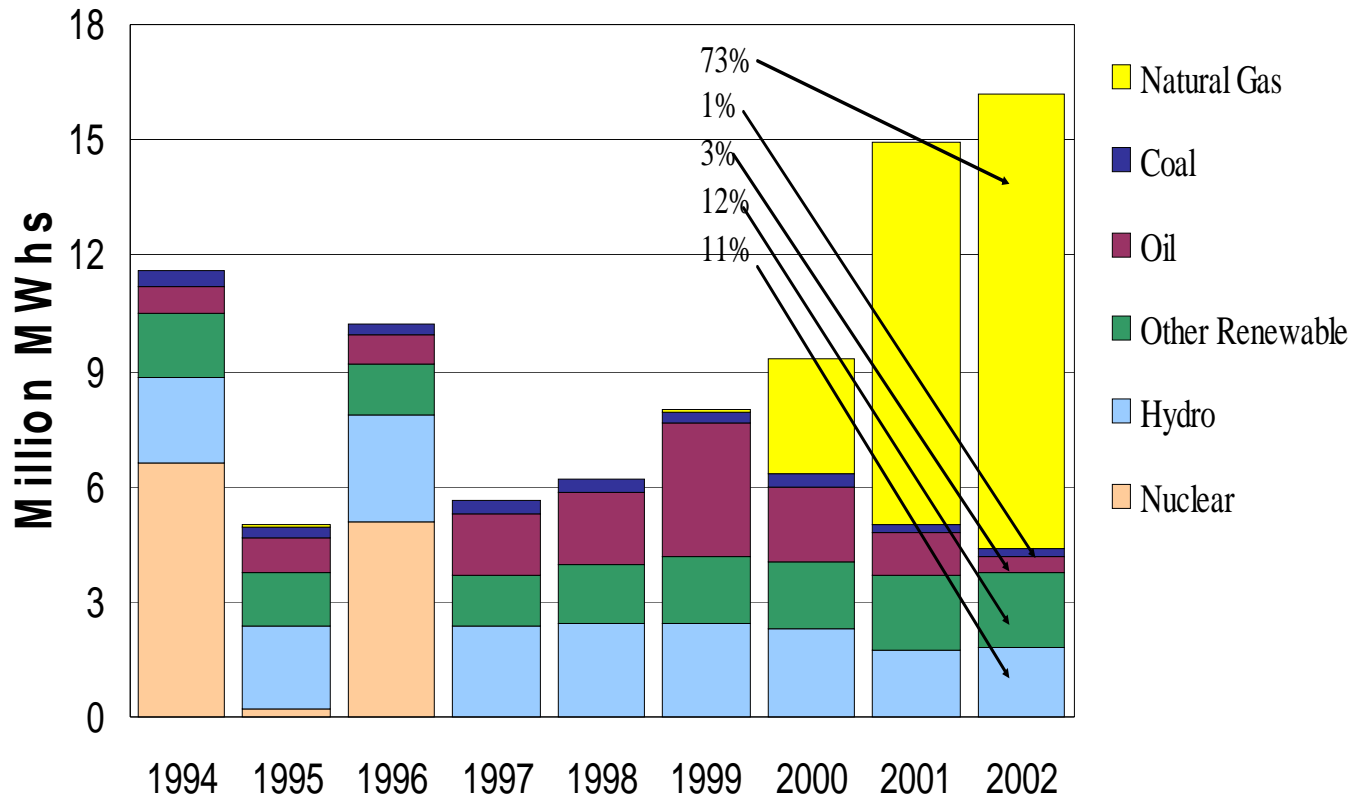


# Recent New England Gas Power Plants

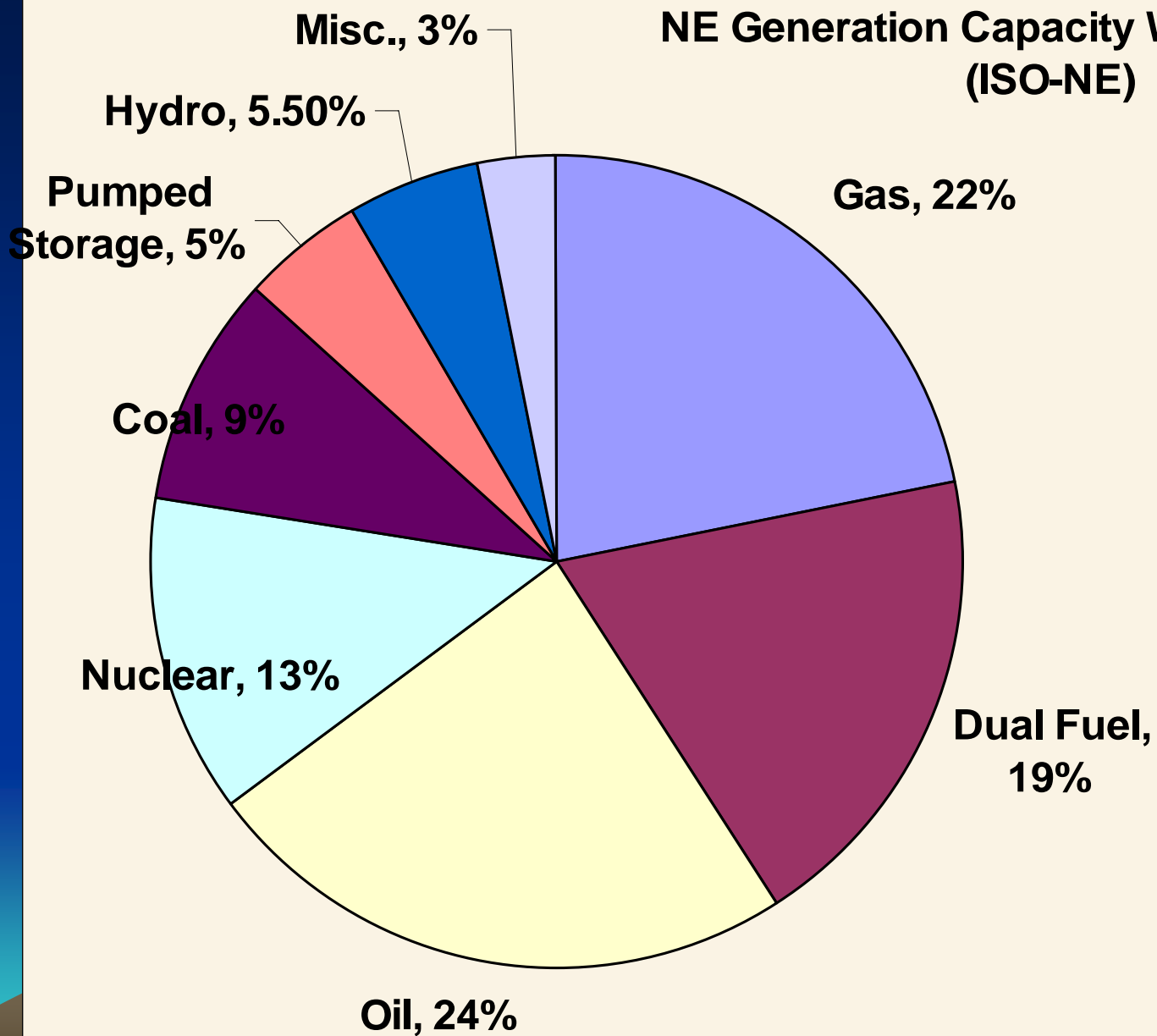
Additions since 1998.  
Winter unit ratings.  
Source: ISO-NE, "2004  
CELT Report"



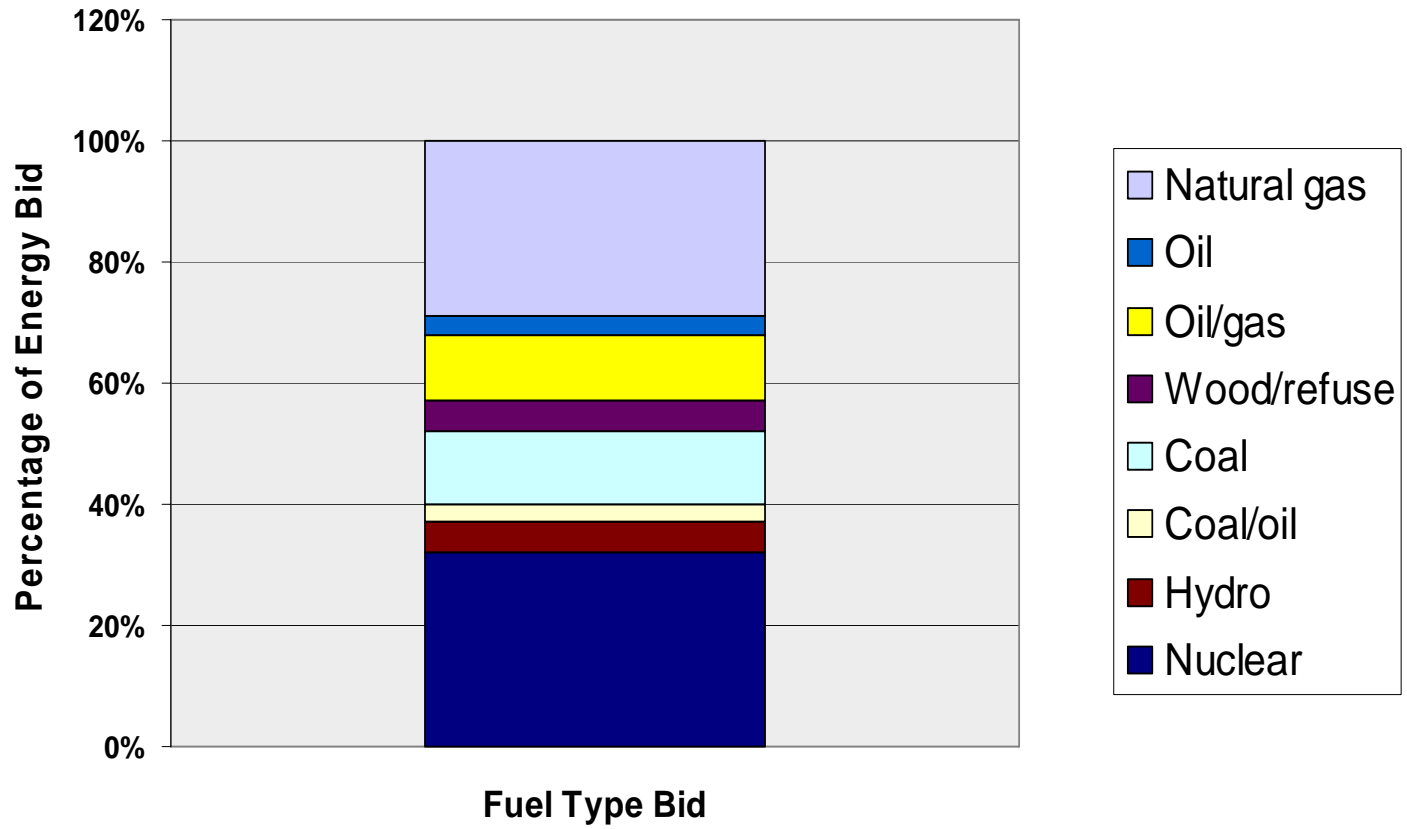
# Electricity Generated in Maine by Fuel Type 1994 - 2002



# NE Generation Capacity Winter 2005-06 (ISO-NE)

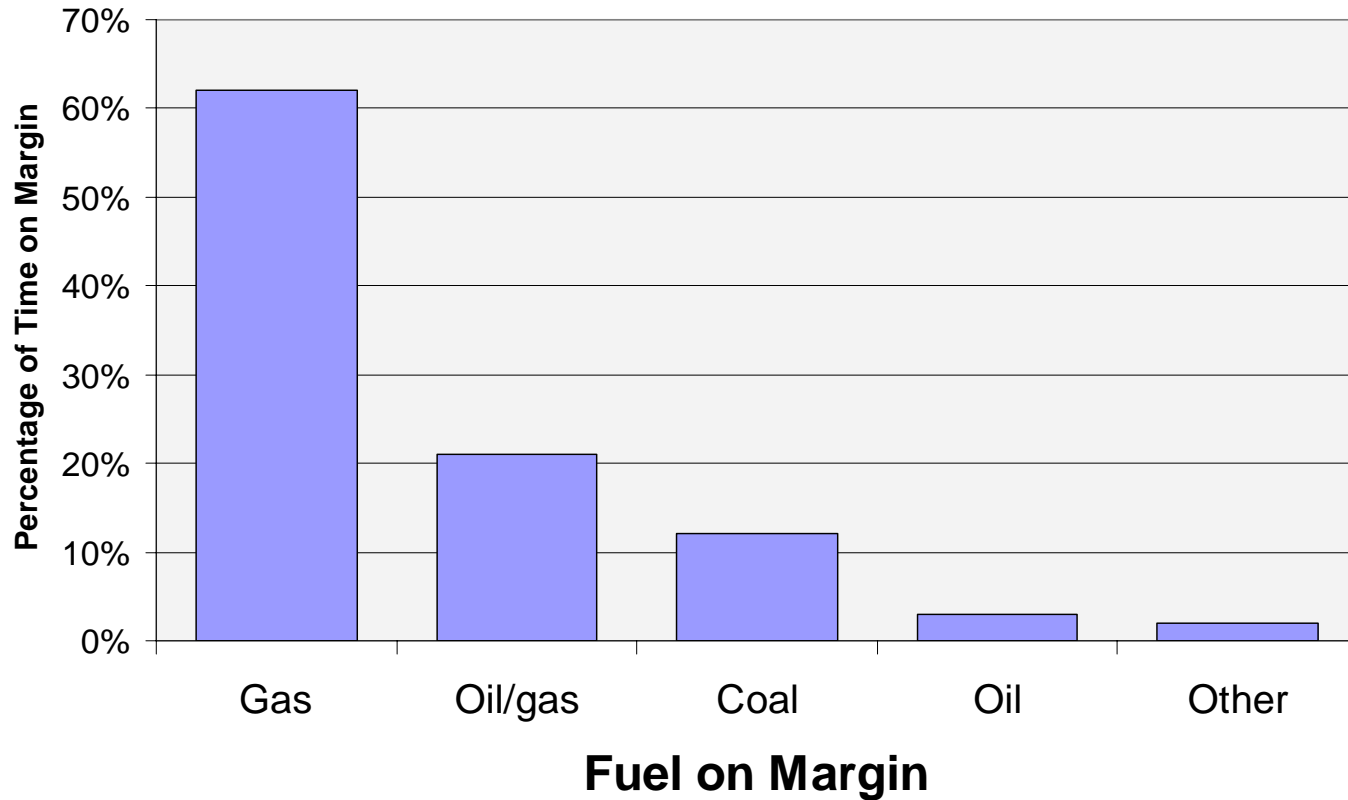


# Bid Stack



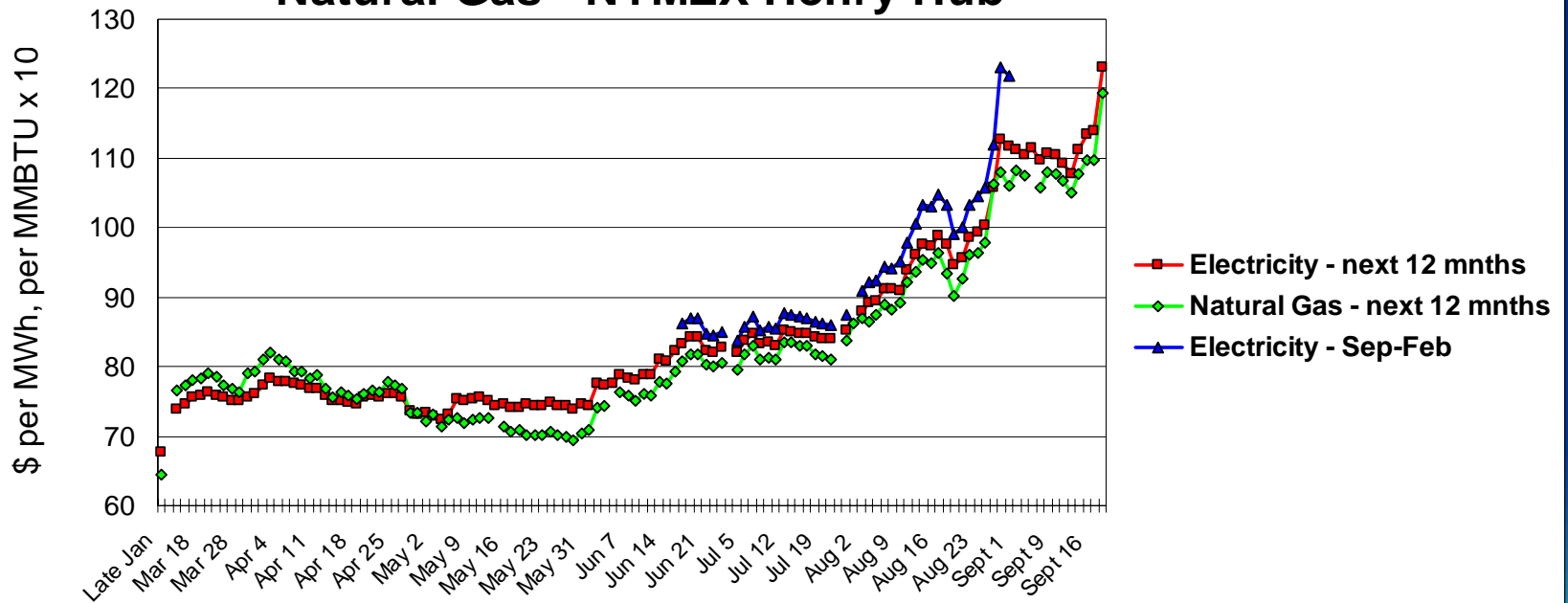
# Natural Gas Sets Clearing Price 60% of Hours

**Energy Clearing Price Set by Fuel Type**



# Natural Gas Prices Set Electric Prices

**Electricity Forwards, Natural Gas Futures**  
**Electricity - On peak at MA Hub**  
**Natural Gas - NYMEX Henry Hub**



# Costs of Options to Meet New England Electric Demand

<u>Option</u>	<u>Million\$/Bcf</u>
Efficiency	2.82
Coal Gasification	3.64
Nuclear	3.97
Renewable	4.50
LNG	5.77-6.31

“Meeting New England’s Future Natural Gas Demands: Nine Scenarios and Their Impacts,” by the Power Planning Committee of the NEGC, March 2005



