

# Maine Weekly Influenza Surveillance Report

January 20, 2015

For MMWR week 2 (ending 1/17/2015)

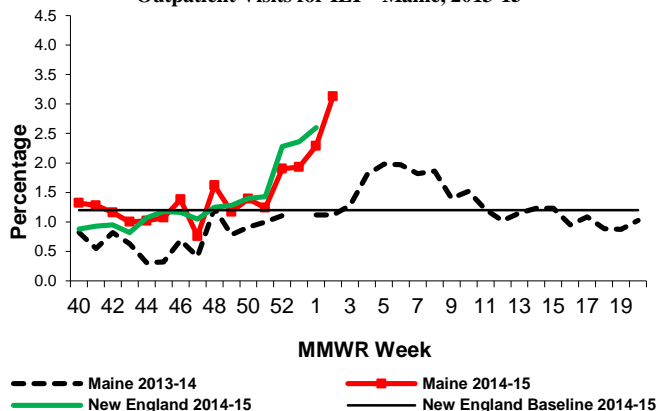
## New This Week

- Federal Flu Code: Widespread
- 25 new outbreaks reported; 19 in long term care facilities, 5 in schools, and 1 in an institution

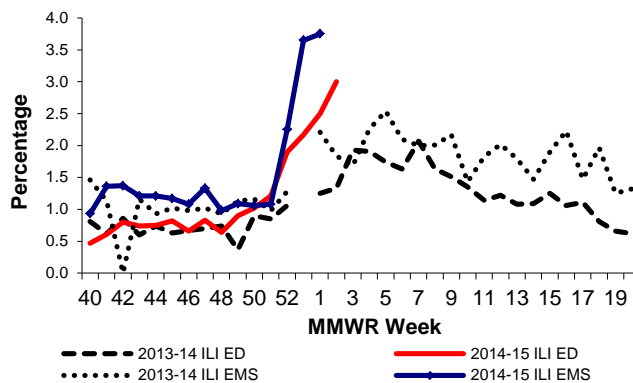
## Surveillance Information – Maine, 2014-2015 Influenza Season

- Number of ILINet Providers reporting: 21
  - % of visits for Influenza-Like Illness (ILI): 3.13
- Syndromic Surveillance
  - % of Emergency Room visits for ILI: 3.0
  - % of Emergency Medical Services (EMS) runs for ILI: no data
- Number of Hospitals reporting: 3
  - % of admissions due to Pneumonia & Influenza (P&I): 3.7
- Electronic Death Reporting System
  - % of deaths due to P&I: 19.8

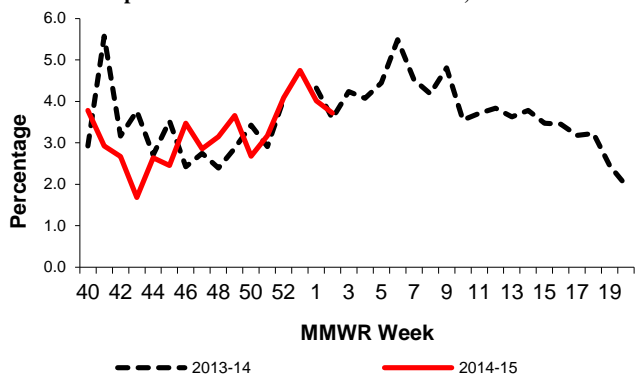
Outpatient Visits for ILI – Maine, 2013-15



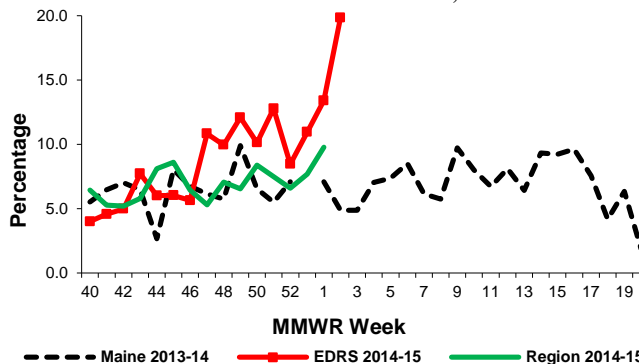
Syndromic Surveillance data for ILI – Maine, 2013 -15



Hospital Admissions Due to P&I – Maine, 2013-15



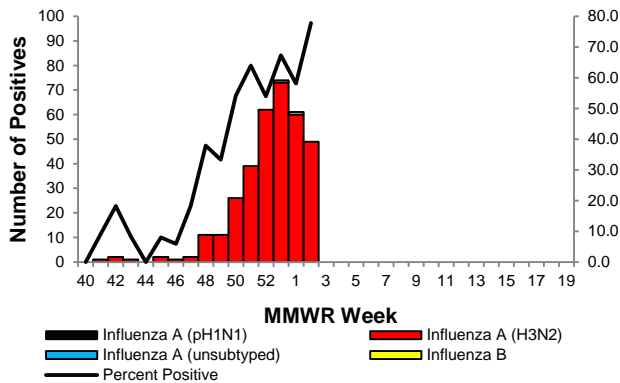
Deaths Attributable to P&I – Maine, 2013-15



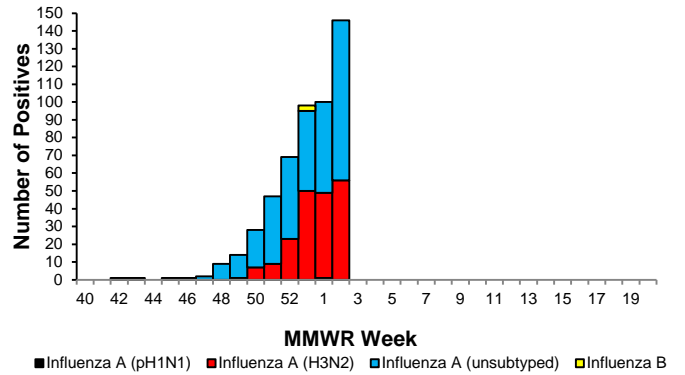
## Lab Data – Maine, 2014-2015 Influenza Season

- # of samples tested at HETL: 63
  - # positive: 49
  - % positive: 77.8
- # of samples tested at Maine Reference Labs: 449
  - # positive: 146
  - % positive: 32.5
- # of samples positive by rapid antigen test: 300

Positive PCR Samples for Influenza, HETL – Maine, 2014-15



Positive Samples for Influenza, Maine Reference Labs – Maine, 2014-15

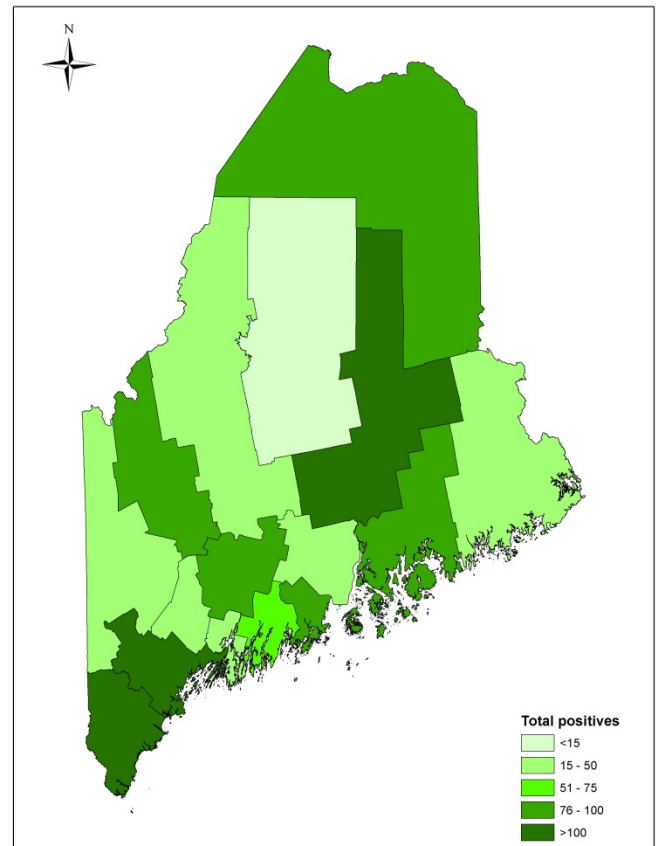


## Geographic Distribution of Lab Tests, Maine 2014-15\*

County	Tested this week	Total positives
Androscoggin	10	42
Aroostook	17	83
Cumberland	65	262
Franklin	48	76
Hancock	15	79
Kennebec	36	86
Knox	8	83
Lincoln	11	68
Oxford	11	32
Penobscot	74	283
Piscataquis	5	13
Sagadahoc	3	28
Somerset	15	42
Waldo	3	26
Washington	1	17
York	170	307
<b>Total</b>	<b>492</b>	<b>1527</b>

\*Only reported PCR, culture, and rapid antigen tests are included in the chart and map. For more information, see the methods page on <http://www.maine.gov/dhhs/mecdc/infectious-disease/epi/influenza/influenza-surveillance-weekly-updates.shtml>

## Positive Influenza Tests, Maine 2014-15

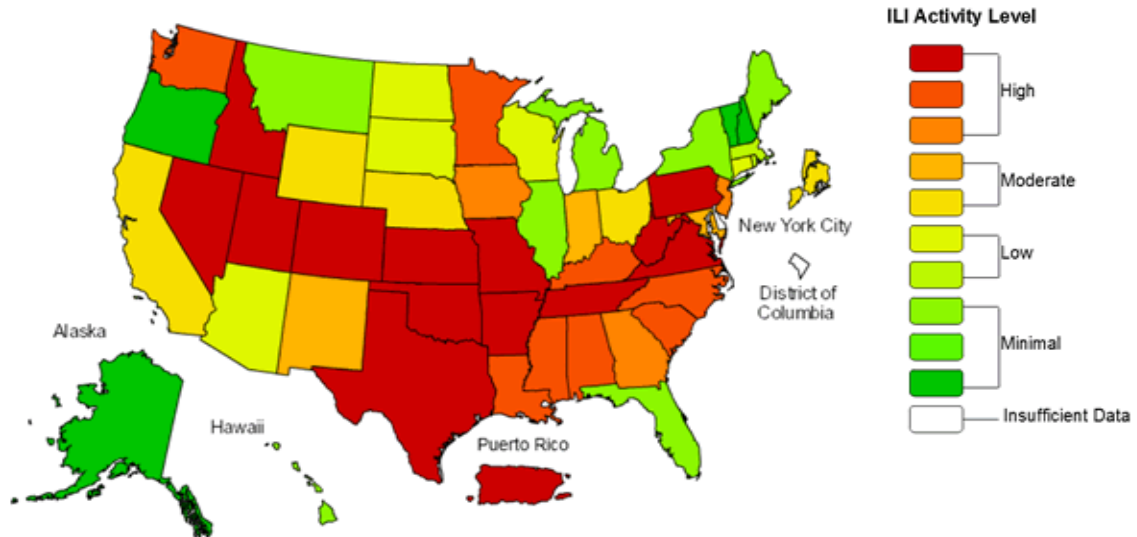




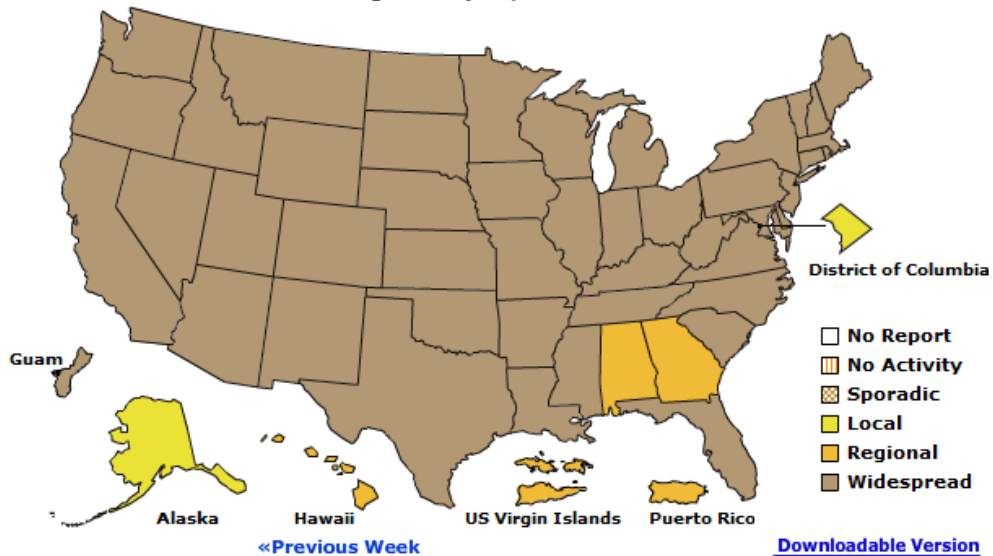
# National Influenza Surveillance Data

Source: <http://www.cdc.gov/flu/weekly/>

## Influenza-Like Illness (ILI) Activity Level Indicator Determined by Data Reported to ILINet 2014-15 Influenza Season Week 1 ending Jan 10, 2015



## A Weekly Influenza Surveillance Report Prepared by the Influenza Division Weekly Influenza Activity Estimates Reported by State and Territorial Epidemiologists\* Week Ending January 10, 2015- Week 1



\*This map indicates geographic spread and does not measure the severity of influenza activity.