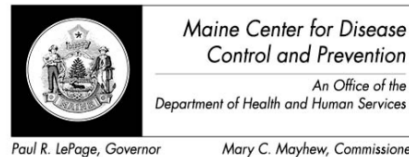


# Maine Weekly Influenza Surveillance Report

December 16, 2014



For MMWR week 50 (ending 12/13/2014)

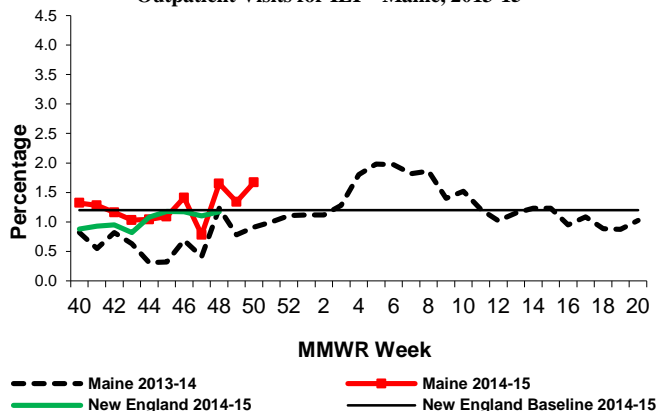
## New This Week

- Federal Flu Code: Regional
- 3 new outbreaks reported in long term care facilities

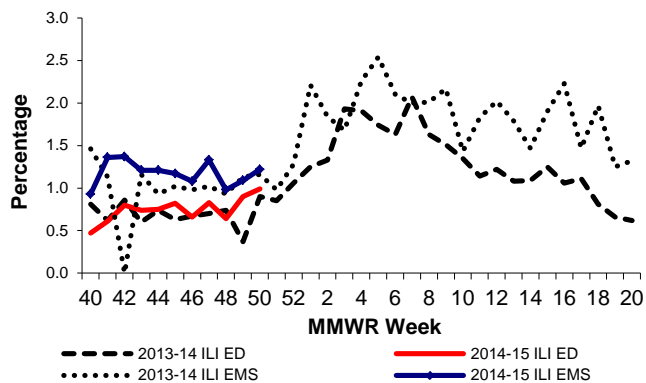
## Surveillance Information – Maine, 2014-2015 Influenza Season

- Number of ILINet Providers reporting: 23
  - % of visits for Influenza-Like Illness (ILI): 1.67
- Syndromic Surveillance
  - % of Emergency Room visits for ILI: 0.99
  - % of Emergency Medical Services (EMS) runs for ILI: 1.22
- Number of Hospitals reporting: 2
  - % of admissions due to Pneumonia & Influenza (P&I): 2.2
- Electronic Death Reporting System
  - % of deaths due to P&I: no data

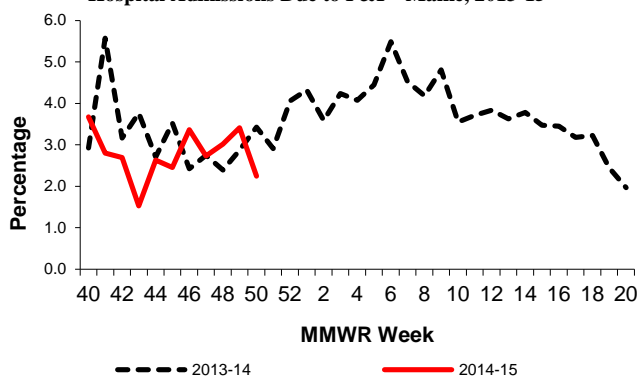
Outpatient Visits for ILI – Maine, 2013-15



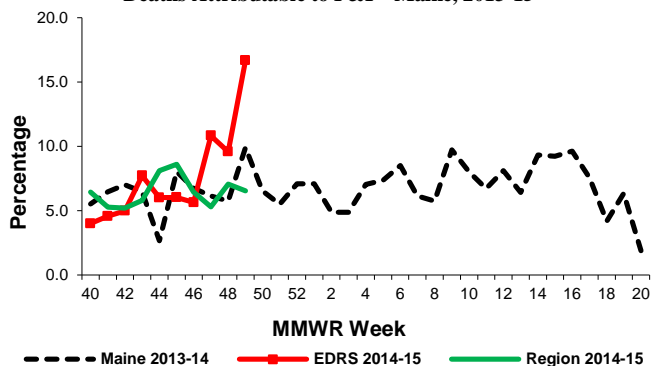
Syndromic Surveillance data for ILI – Maine, 2013 -15



Hospital Admissions Due to P&I – Maine, 2013-15



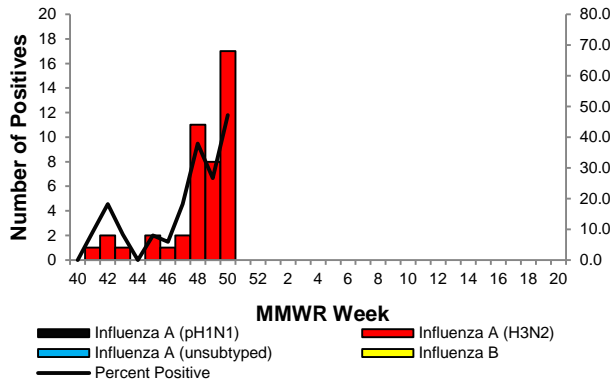
Deaths Attributable to P&I – Maine, 2013-15



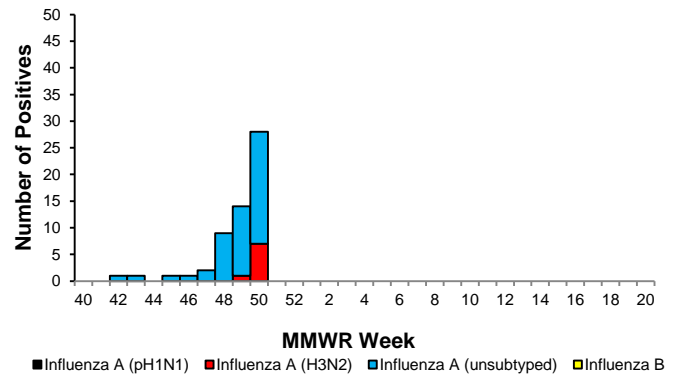
## Lab Data – Maine, 2014-2015 Influenza Season

- # of samples tested at HETL: 36
  - # positive: 17
  - % positive: 47.2
- # of samples tested at Maine Reference Labs: 149
  - # positive: 28
  - % positive: 18.8
- # of samples positive by rapid antigen test: 11

Positive PCR Samples for Influenza, HETL – Maine, 2014-15



Positive Samples for Influenza, Maine and National Reference Labs – Maine, 2014-15

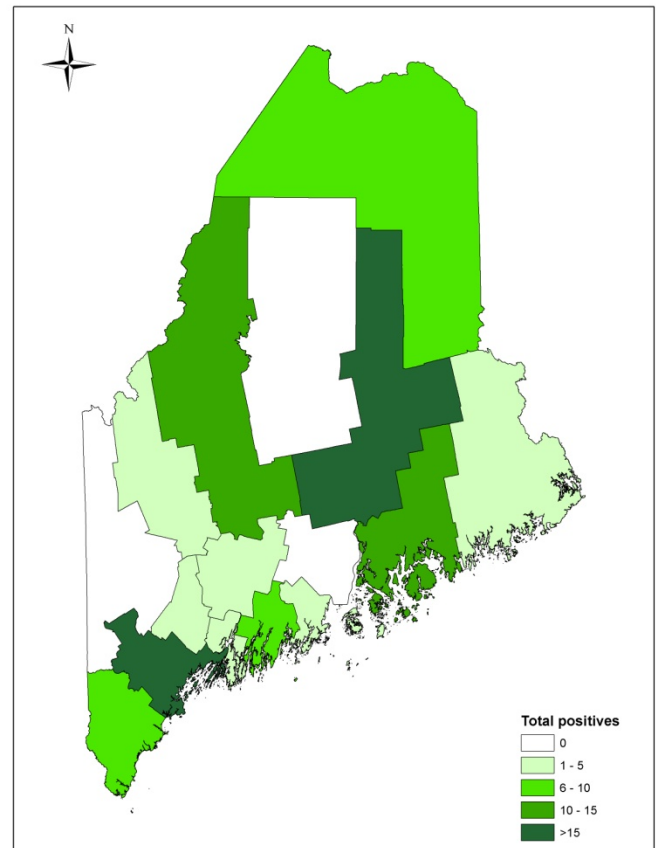


## Geographic Distribution of Lab Tests, Maine 2014-15\*

County	New this week	Total positives
Androscoggin	2	3
Aroostook	3	7
Cumberland	9	16
Franklin	0	3
Hancock	5	15
Kennebec	0	5
Knox	3	4
Lincoln	3	6
Oxford	0	0
Penobscot	14	36
Piscataquis	0	0
Sagadahoc	0	1
Somerset	3	11
Waldo	0	0
Washington	3	4
York	2	10
<b>Total</b>	<b>47</b>	<b>121</b>

\*Only reported PCR, culture, and rapid antigen tests are included in the chart and map. For more information, see the methods page on <http://www.maine.gov/dhhs/mecdc/infectious-disease/epi/influenza/influenza-surveillance-weekly-updates.shtml>

## Positive Influenza Tests, Maine 2014-15



### Antiviral Resistance – Maine, 2014-15 Influenza Season

- # of Influenza A (pH1N1) samples tested for Tamiflu resistance at HETL: 0
  - # with resistance: 0
- # of Influenza A (H3) samples tested for Tamiflu resistance at HETL: 17
  - # with resistance: 0

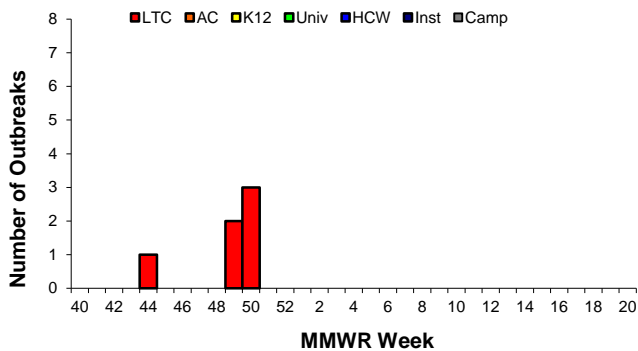
### Antigenic Characterization (Vaccine Match)

- Federal CDC has antigenically characterized 236 influenza viruses since October 1, 2014
  - 100.0% of influenza A/H1N1 samples match the vaccine strain
  - 32.5% of influenza A/H3 samples match the vaccine strain
  - 78% of influenza B/Victoria samples match the vaccine strain
  - 100% of influenza B/Yamagata samples match the vaccine strain

### Influenza-Like Illness Outbreaks – Maine, 2014-15 Influenza Season

- # new outbreaks: 3
- Total outbreaks 2014-15 season: 6

Influenza-Like Illness Outbreaks by Facility Type – Maine, 2014-15



#### Outbreak Facility Type Key:

- LTC - Long Term Care Facility
- AC - Acute Care Facility (nosocomial)
- K12 - School (K-12) or daycare
- Univ - School (residential) or University
- HCW - Health care workers
- Inst - Other institutions (workplaces, correctional facilities etc)
- Camp - Camp

### Influenza-Like Illness Outbreak by Facility Type and County – Maine, 2014-15

County	LTC	AC	K12	Univ	HCW	Inst	Camp	Total
Androscoggin								0
Aroostook								0
Cumberland								0
Franklin								0
Hancock								0
Kennebec	1							1
Knox								0
Lincoln								0
Oxford								0
Penobscot	2							2
Piscataquis								0
Sagadahoc	2							2
Somerset	1							1
Waldo								0
Washington								0
York								0
<b>Total</b>	<b>6</b>	<b>0</b>	<b>0</b>	<b>0</b>	<b>0</b>	<b>0</b>	<b>0</b>	<b>6</b>

### Pediatric Influenza Deaths

- No pediatric influenza-associated deaths reported during the 2014-15 influenza season

**Influenza-Like Illness (ILI) Activity Level Indicator Determined by Data Reported to ILINet**  
**2014-15 Influenza Season Week 49 ending Dec 06, 2014**

