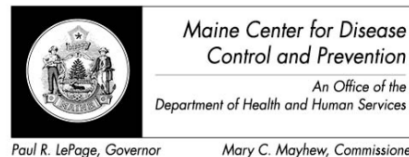


Maine Weekly Influenza Surveillance Report

January 8, 2013



For MMWR week 1 (ending 1/5/2013)

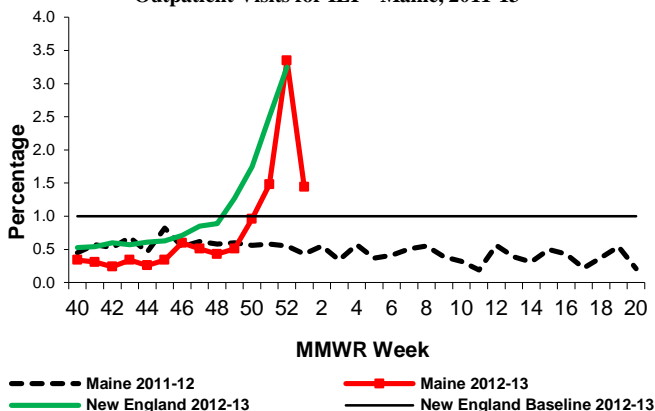
New This Week

- Federal Flu Code: Widespread
- 27 new outbreaks reported, 26 in long term care facilities, and 1 in an acute care facility

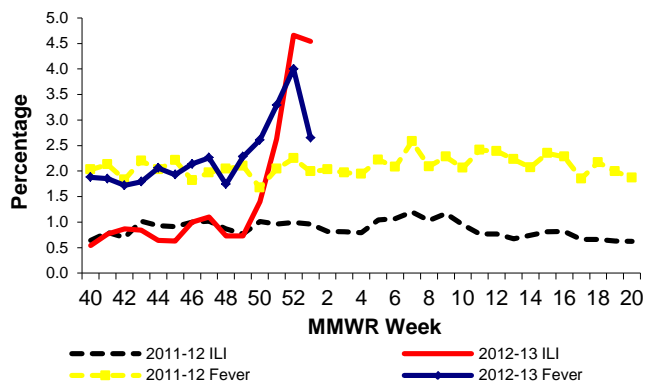
Surveillance Information – Maine, 2012-2013 Influenza Season

- Number of ILINet Providers reporting: 17
 - % of visits for Influenza-Like Illness (ILI): 1.44
- Number of Emergency Departments participating: 26
 - % of visits for ILI: 4.54
 - % of visits for fever: 2.65
- Number of Hospitals reporting: 3
 - % of admissions due to Pneumonia & Influenza (P&I): 9.7
- Electronic Death Reporting System
 - % of deaths due to P&I: no data

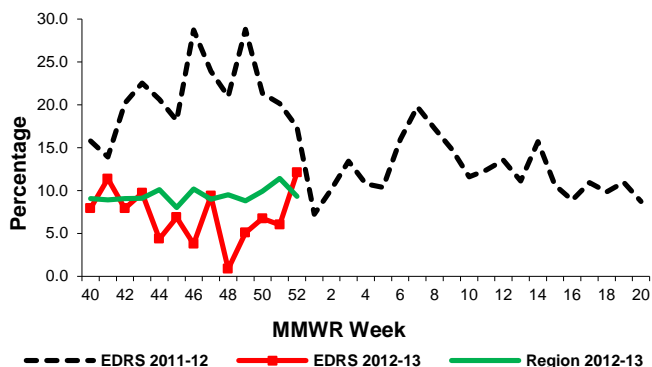
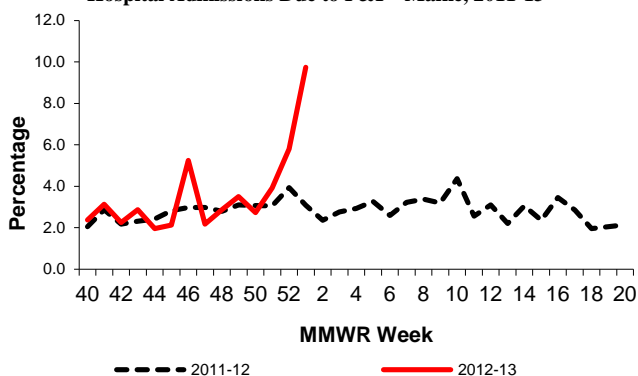
Outpatient Visits for ILI – Maine, 2011-13



Emergency Department Visits for ILI and Fever – Maine, 2011 -13



Hospital Admissions Due to P&I – Maine, 2011-13



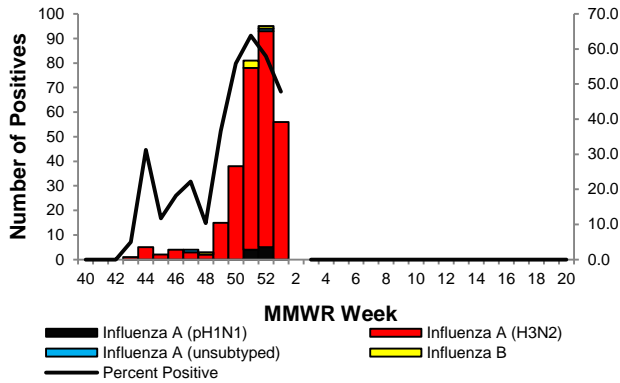
Deaths Attributable to P&I – Maine, 2011-13

All data are preliminary and subject to change

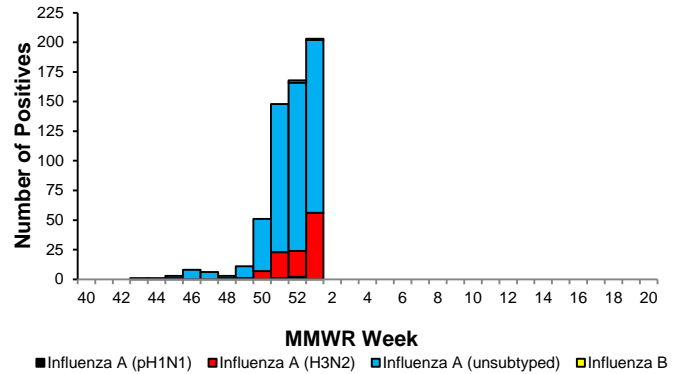
Lab Data – Maine, 2012-2013 Influenza Season

- # of samples tested at HETL: 117
 - # positive: 56
 - % positive: 47.9
- # of samples tested at Maine Reference Labs: 429
 - # positive: 203
 - % positive: 47.3
- # of samples positive at National Reference Labs: 0
- # of samples positive by rapid antigen test: 81

Positive PCR Samples for Influenza, HETL – Maine, 2012-13



Positive PCR Samples for Influenza, Maine and National Reference Labs – Maine, 2012-13

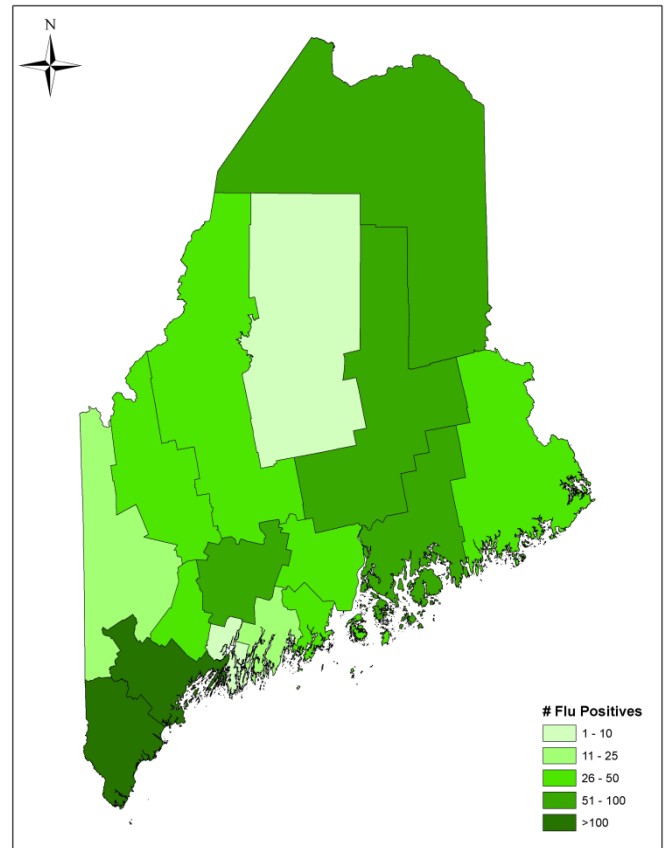


Geographic Distribution of Lab Tests

Information about this map:

- Includes culture, PCR, and rapid antigen positive test results
- Aggregated lab data received from reference labs is not displayed on this map
- Influenza is not reportable, therefore this map is understood to be an underrepresentation of the true burden of influenza
- Only influenza tests reported on a patient level (with patient name and date of birth) are represented in this map
- If patient address is not received, the location of the ordering physician is used
- Does not include titer results as we cannot differentiate between infection and immunity

Positive Influenza Tests, Maine 2012-13



Antiviral Resistance – Maine, 2012-13 Influenza Season

- # of Influenza A (pH1N1) samples tested for Tamiflu resistance at HETL: 0
 - # with resistance: 0
- # of Influenza A(H3) samples tested for Tamiflu resistance at HETL: 24
 - # with resistance: 0

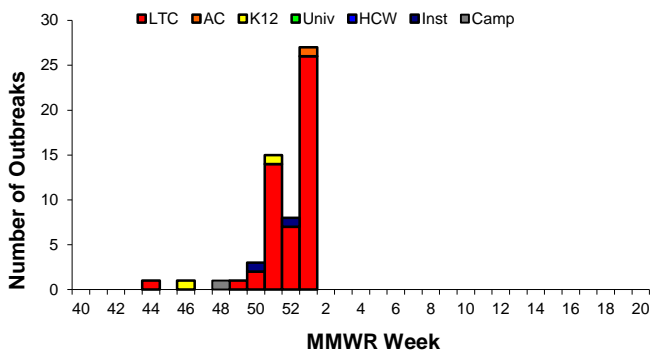
Antigenic Characterization (Vaccine Match)

- Federal CDC has antigenically characterized 413 influenza viruses since October 1, 2012.
 - 100% of influenza A/H1 samples matched the vaccine strain
 - 99.3% of influenza A/H3 samples matched the vaccine strain
 - 68.7% of influenza B samples matched the vaccine strain

Influenza-Like Illness Outbreaks – Maine, 2012-13 Influenza Season

- # new outbreaks: 27
- Total outbreaks 2012-13 season: 57

Influenza-Like Illness Outbreaks by Facility Type – Maine, 2012-13



Outbreak Facility Type Key:

- LTC - Long Term Care Facility
- AC - Acute Care Facility (nosocomial)
- K12 - School (K-12) or daycare
- Univ - School (residential) or University
- HCW - Health care workers
- Inst - Other institutions (workplaces, correctional facilities etc)
- Camp - Camp

Influenza-Like Illness Outbreak by Facility Type and County – Maine, 2012-13

County	LTC	AC	K12	Univ	HCW	Inst	Camp	Total
Androscoggin	2					1		3
Aroostook	3					1		4
Cumberland	8		1					9
Franklin	2							2
Hancock	3							3
Kennebec	9							9
Knox								0
Lincoln							1	1
Oxford	4							4
Penobscot	5							5
Piscataquis		1						1
Sagadahoc	2							2
Somerset	8		1					9
Waldo	2							2
Washington	1							1
York	2							2
Total	51	1	2	0	0	2	1	57

Pediatric Influenza Deaths

- 1 pediatric influenza-associated death reported in an unvaccinated child from Central Maine

All data are preliminary and subject to change

National Influenza Surveillance Data

Source: <http://www.cdc.gov/flu/weekly/>

Influenza-Like Illness (ILI) Activity Level Indicator Determined by Data Reported to ILINet 2012-13 Influenza Season Week 52 ending Dec 29, 2012

