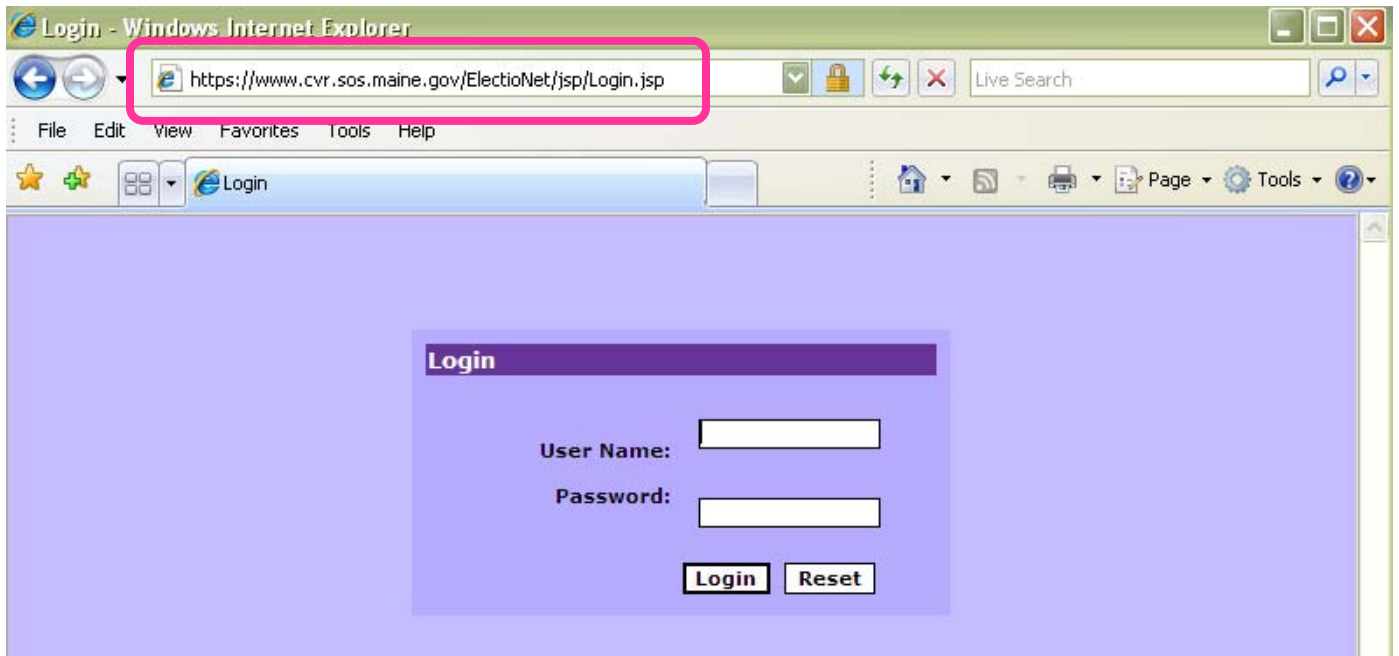
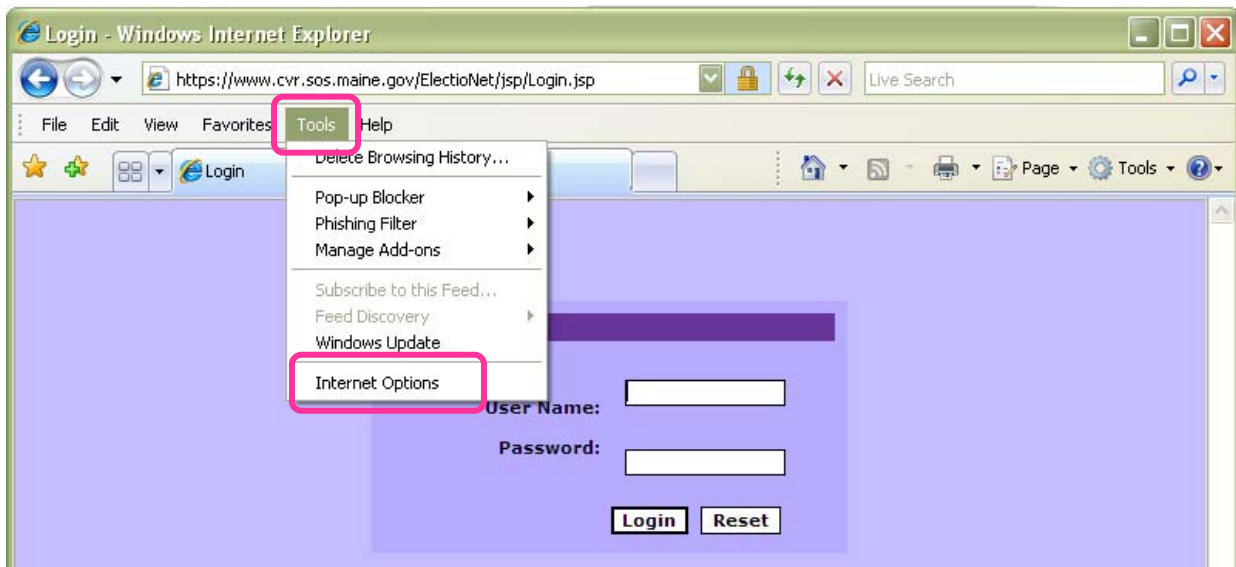


Using Internet Explorer versions 8 & 9, or 11 with CVR

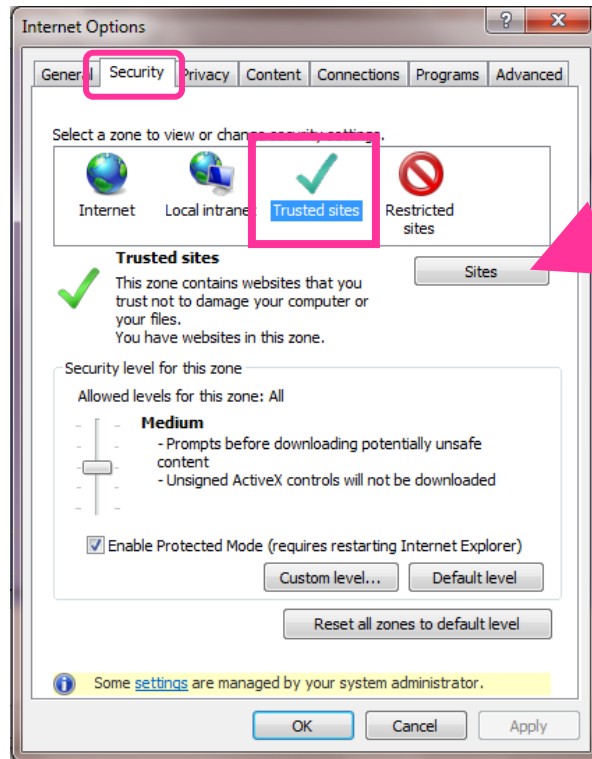
1. Go to CVR Login page. Highlight the address at the top (one way to do this is to click on the address to highlight it and then hold the Control key down and click on C to copy).



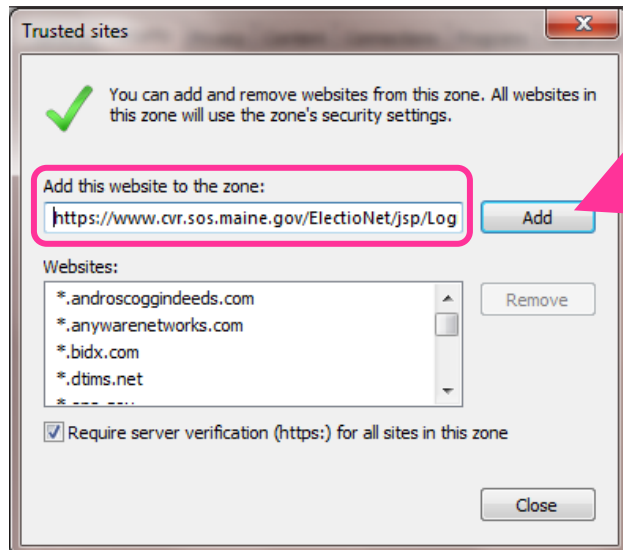
2. Click on the Tools menu and then Internet Options.



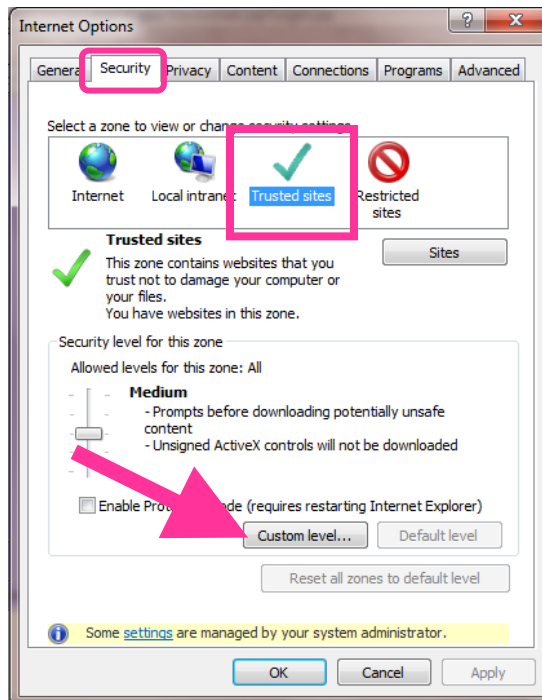
3. When Internet Options opens, click on the Security Tab. Click on Trusted Sites and then click on the Sites button.



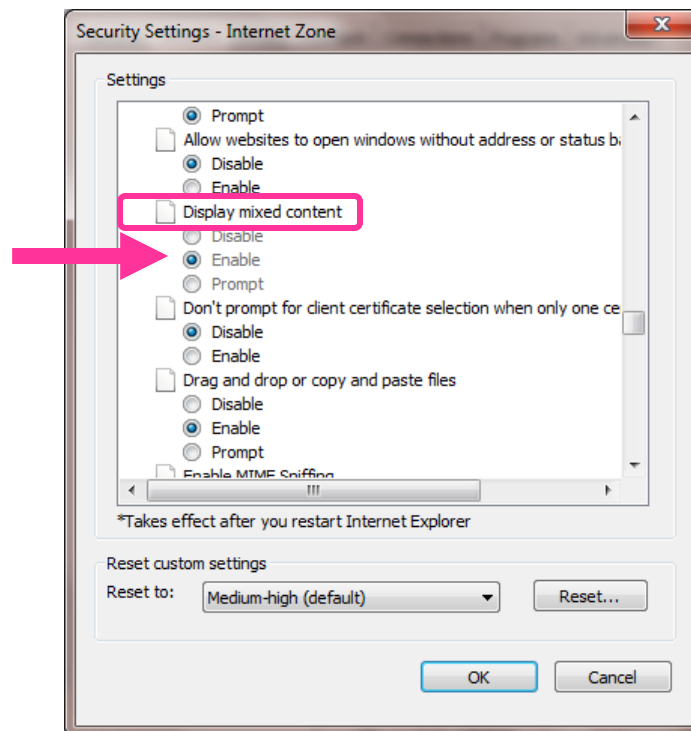
4. Paste the CVR address in the “Add this website to the zone:” box and click the Add button.



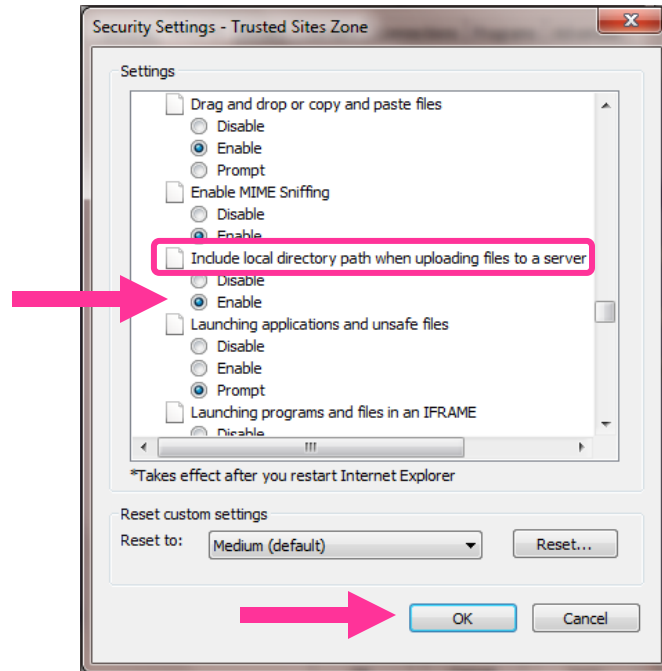
5. With “Trusted sites” still highlighted, click on the Custom Level button.



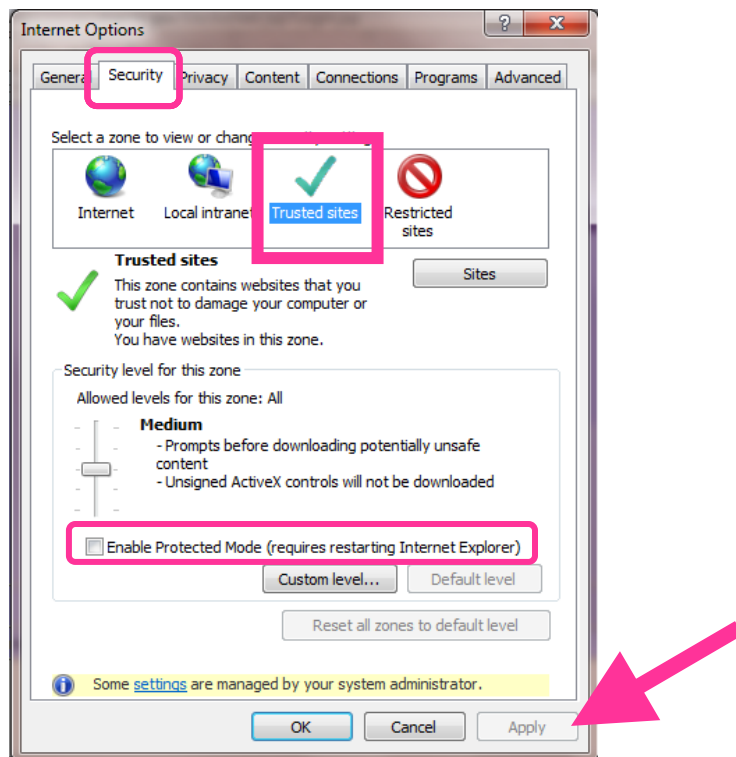
6. Scroll down to the **Miscellaneous** category and then find “**Display mixed content**”. Click on Enable.



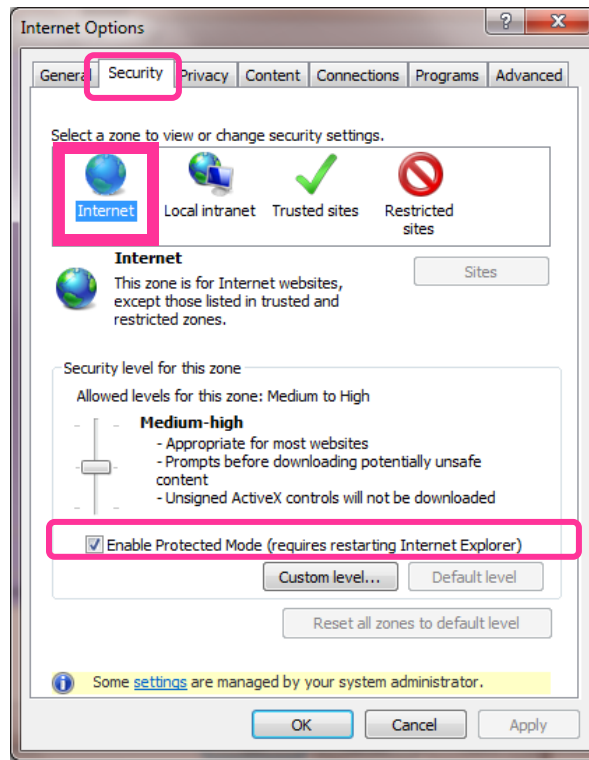
7. Scroll down just a few statements to **“Include local directory path when uploading files to a server”**, click on Enable, and then click on OK.



8. With Trusted Sites still highlighted, **uncheck** the Enable Protected Mode box, and click on Apply.

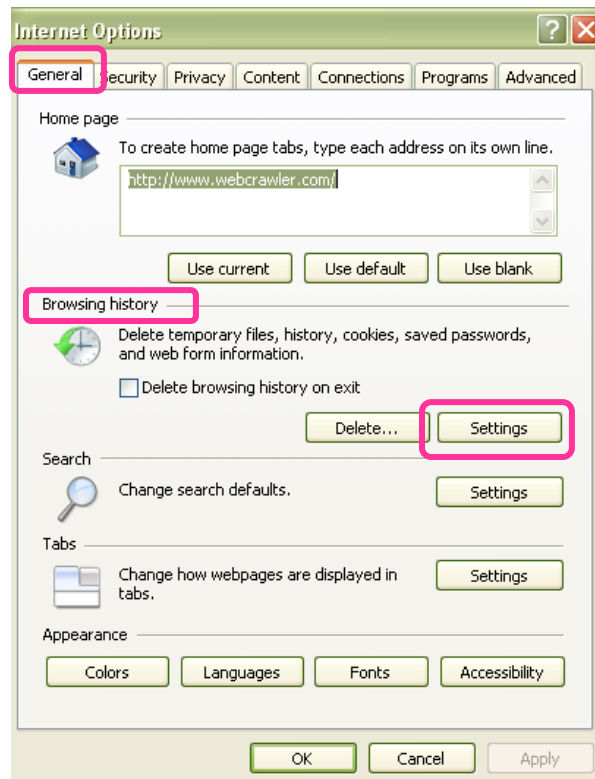


9. Now click on Internet and make sure the Enable Protected Mode box is **checked**.

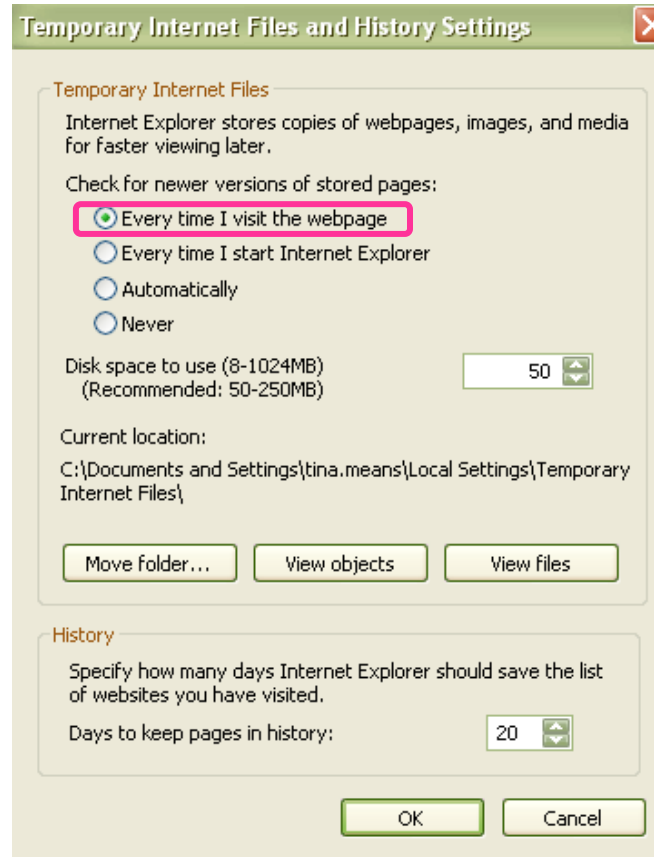


10. With Internet highlighted, click on Custom level and **follow steps 7 and 8 above to enable** “Display Mixed Content” and “Include local directory path when uploading files to a server”.

11. Click on the “General” tab of Internet Options, go to the Browsing History section, and click on Settings:



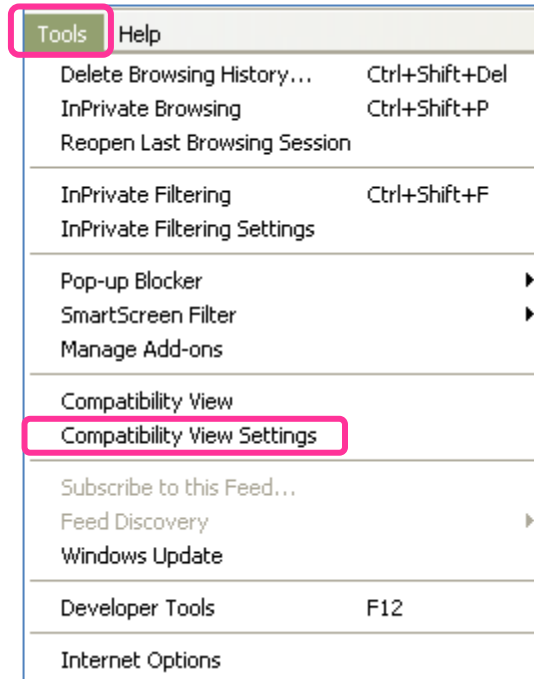
12. On the Temporary Internet Files and History Settings screen, make sure that the option **“Every time I visit the webpage”** is selected under Check for newer versions of stored pages:



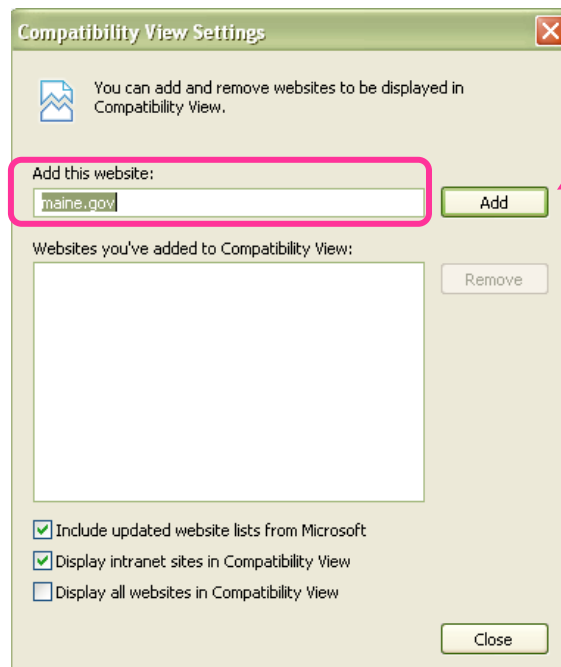
If you are using Internet Explorer 8 or 9, you are done. If you are using Internet Explorer 11, the steps on the next page are necessary.

Compatibility View setting for IE 11

- On any webpage, go to “Tools” (it will either be written out or you’ll have an icon), and select Compatability View Settings.



- If maine.gov does not automatically show up under “Add this website”, then type it in. Click the Add button, and then close out of the window.



If you need assistance, call the CVR Helpdesk line at 1-877-HAVAHLP (1-877-428-2457).