

Michael (mike) DAY

- **Started Plumbing fall, 1978**
 - **Achieved Master License in Oil and Plumbing 1983**
 - **Self-employed 35 years, Plumbing / Heating contractor**
 - **Instructed/taught Plumbing, Oil and Solid fuel, Propane (CETP) and EPA 608, Heat Pumps: from 1/2017 thru 5/2021, Kennebec Valley Community College**

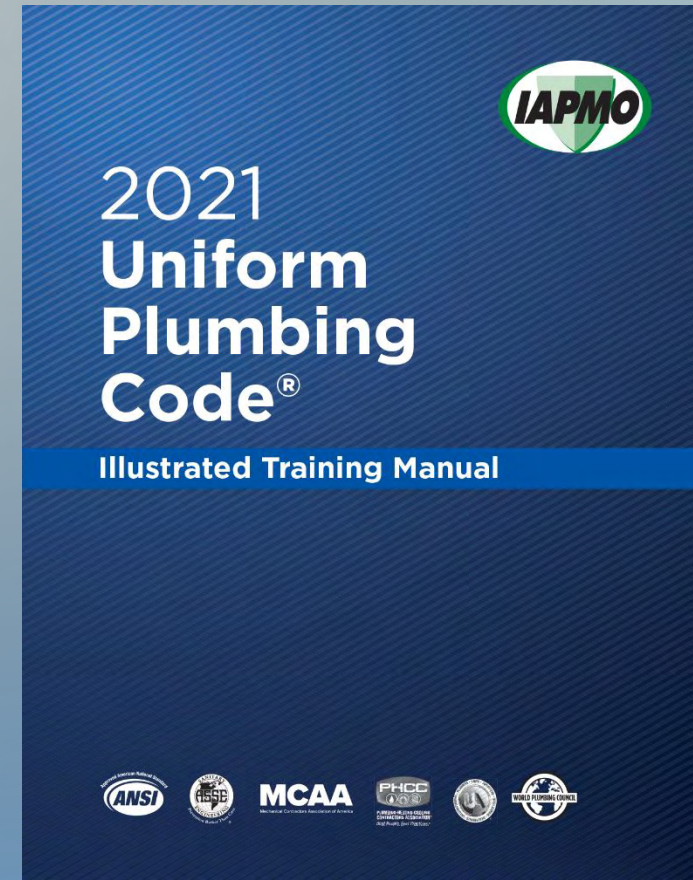
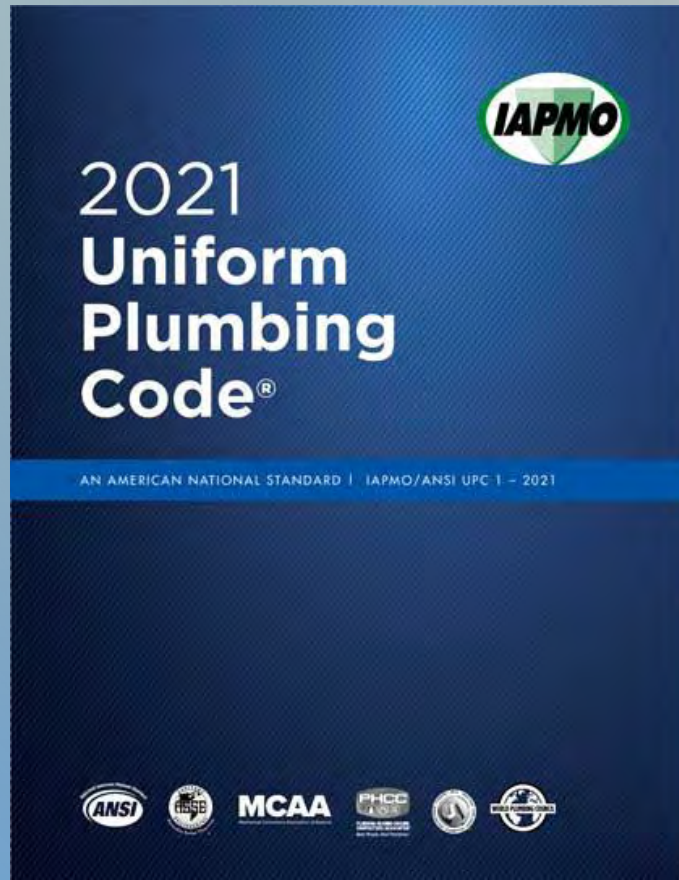
State Senior Plumbing Inspector (Internal) 5/24/2021 till present

Office # 207-624-8639

Cell # 207-592-6362

E-mail: Michael.w.day@maine.gov

UNIFORM CODES ARE AN AMERICAN NATIONAL STANDARD



IAPMO 2021 UPC

WWW.IAPMO.ORG

(SMALL CASE)

<https://iapmomembership.org/store/>

Plumbers' Examining Board Website

- maine.gov/pfr/professionallicensing/professions/plumbers-examining-board

To view the 2021 Uniform
Plumbing Code ebook
please use the following
link: <https://epubs.iapmo.org/2021/UPC/>

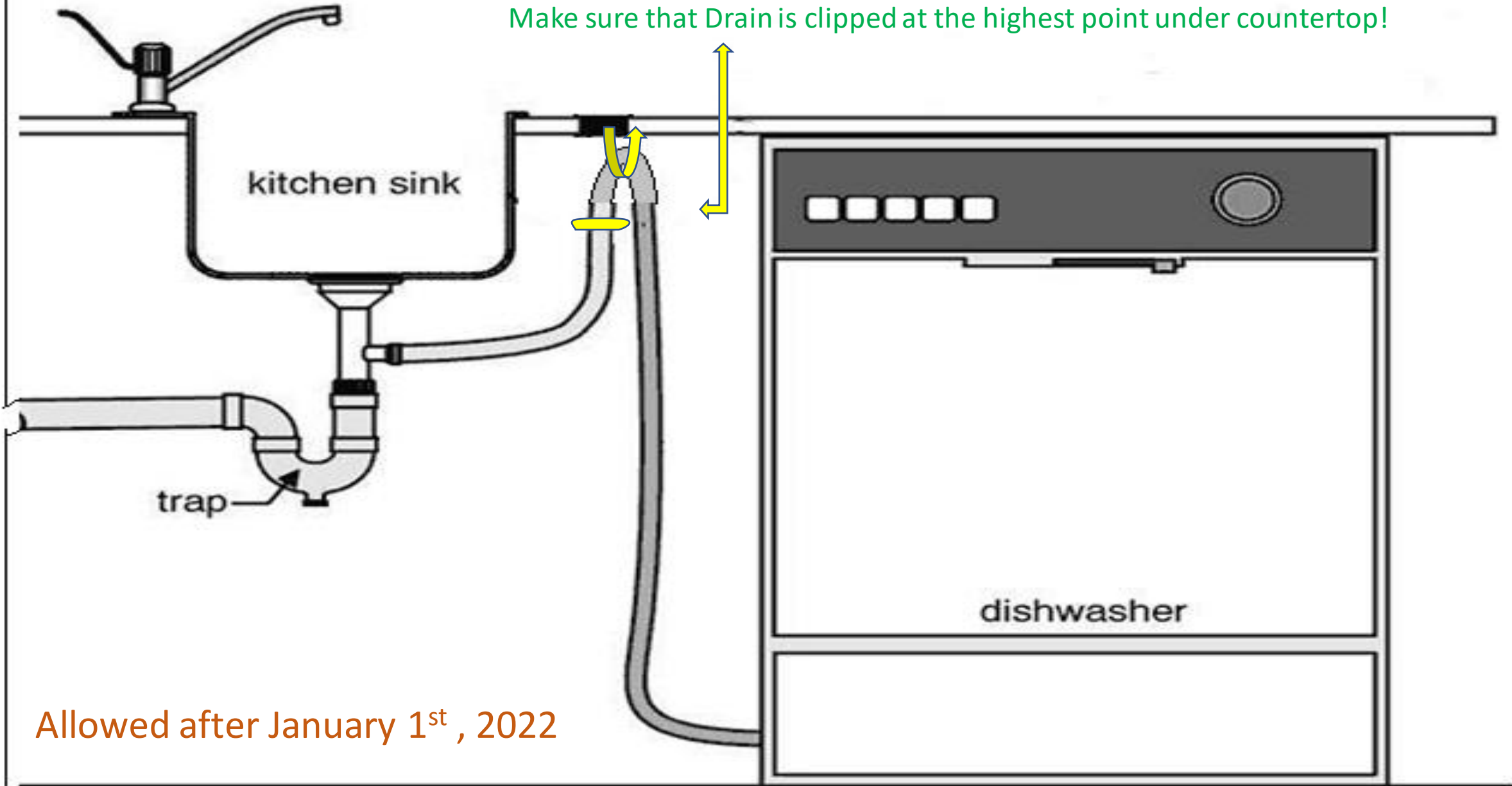
1. TYPE IN, MAINE. GOV IN YOUR BROWSER
2. SELECT STATE AGENCIES
3. TYPE PLUMBERS INTO THE SEARCH BOX

PLUMBERS EXAMINING BOARD LINK LISTED

E-MAIL ADDRESS

PLUMBERS.BOARD@MAINE.GOV

Domestic Dishwasher's (Residential)



Make sure that Drain is clipped at the highest point under countertop!

Allowed after January 1st, 2022

PLUMBING FIXTURES, FIXTURE FITTINGS AND PLUMBING APPLIANCES

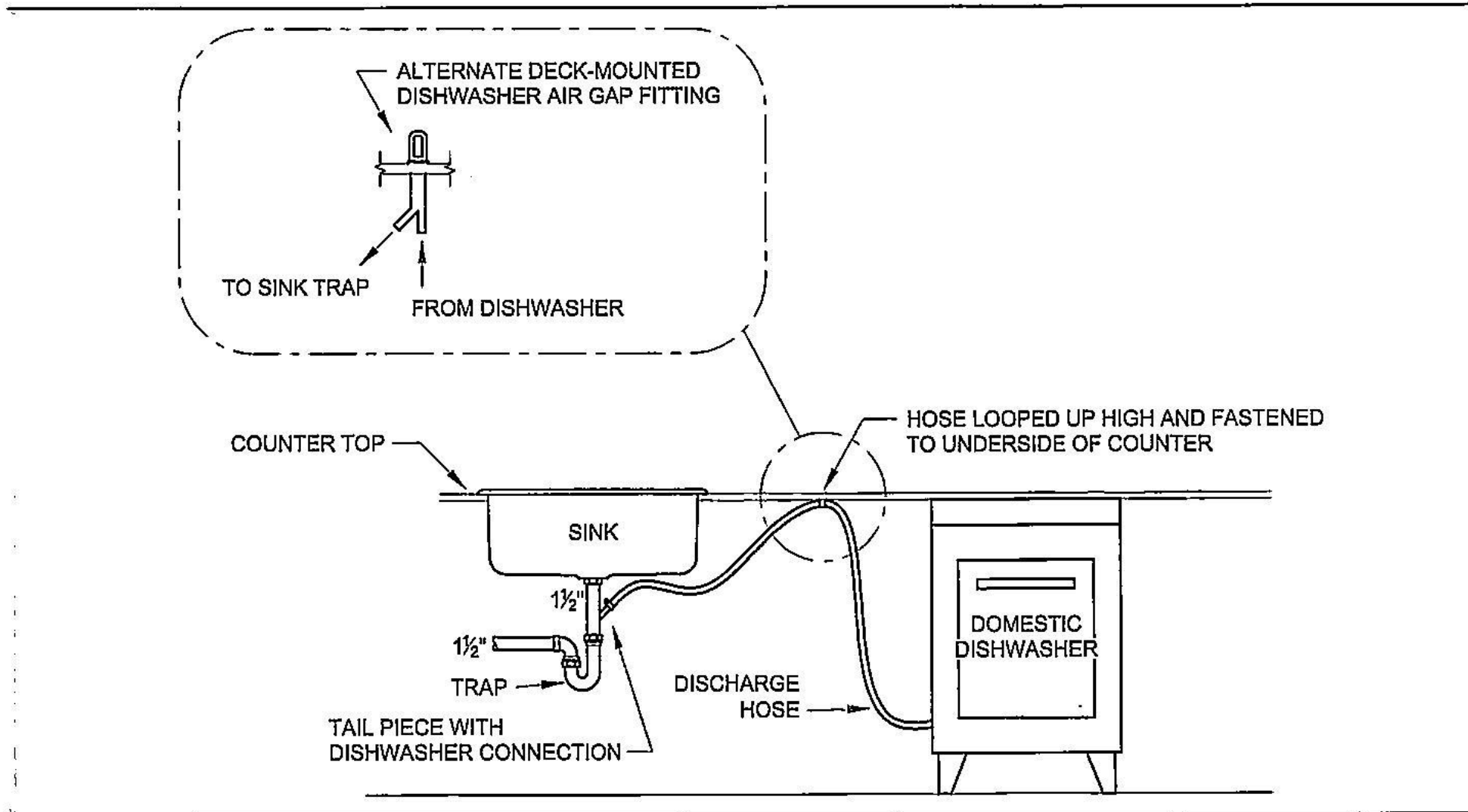
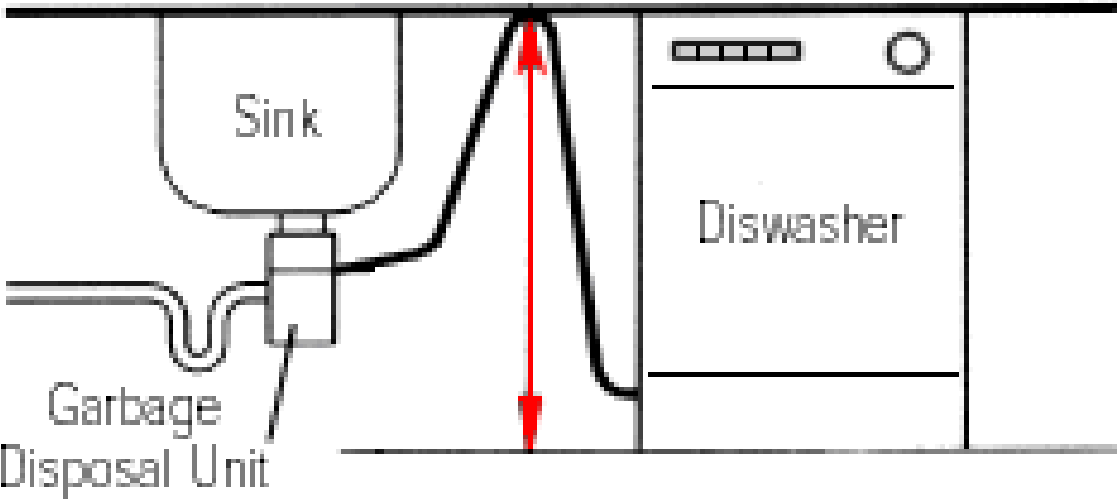
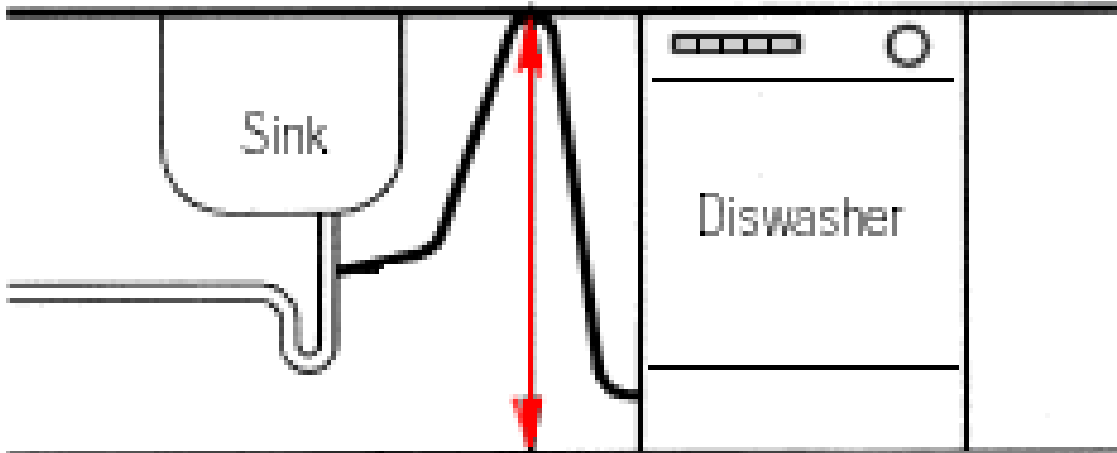


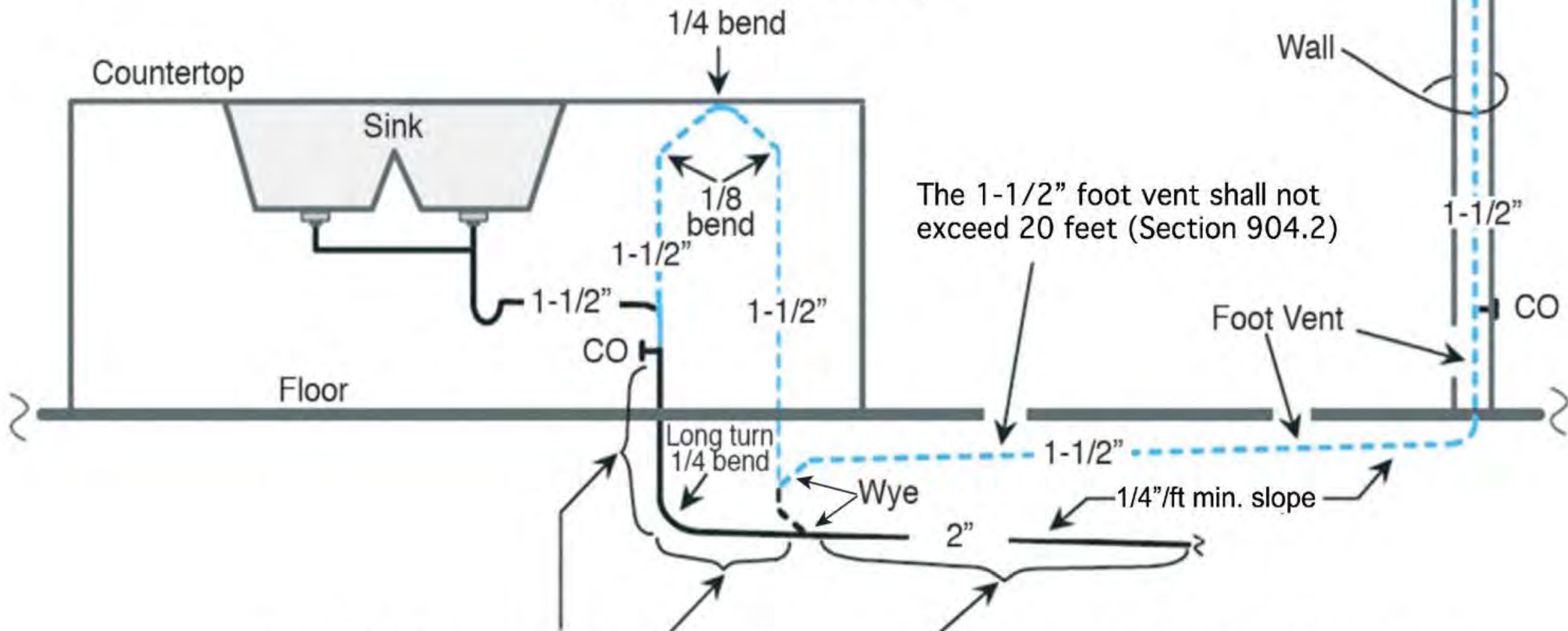
Figure 7.15.2
A RESIDENTIAL KITCHEN SINK AND DISHWASHER

Without an Air Gap





See Section 909.0



The drain of an island sink shall serve no other fixture(s) until downstream of the return vent connection

Drains from other fixtures may connect to the 2" horizontal sink drain downstream of the return vent connection.









Air Admittance Valves

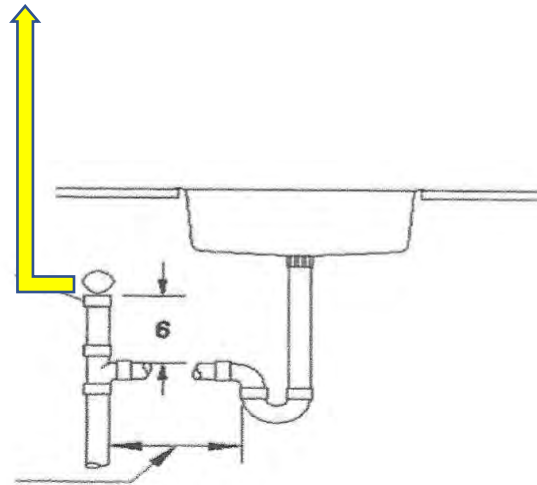


Table 1002.2 Trap Arm Length

UPC does not Prohibit the allowance of the use of Air Admittance Valves

The Authority Having Jurisdiction has the right under Chapter 3, Codes, 301.2.5 and 301.3 (Alternate Materials and Methods of Construction Equivalency) to allow the use of Air Admittance Valves on a **case by case and town by town judgement.**

Please, Use Listed Valves







PERMIT?

Inspection?

104.1 Permits Required.

It shall be unlawful for a person, firm, or corporation to make an installation, alteration, repair, replacement, or remodel a plumbing system regulated by this code except as permitted in Section **104.2, or to cause the same to be done without first obtaining a separate plumbing permit for each separate building or structure**

2021 UPC, 104.2 Exempt Work. A permit shall not be required for the following:

(1) The stopping of leaks in drains, soil, waste, or vent pipe, provided, however, that a trap, drainpipe, soil, waste, or vent pipe become defective, and it becomes necessary to remove and replace the same with new material, the same shall be considered as new work and a permit shall be procured and inspection made as provided in this code.

(2) The clearing of stoppages, including the removal and reinstallation of water closets, or the repairing of leaks in pipes, valves, or fixtures, provided such repairs do not involve or require the replacement or rearrangement of valves, pipes, or fixtures.

Exemption from the permit requirements of this code shall not be deemed to grant authorization for work to be done in violation of the provision

PEB - 104.2 Exempt Work. A permit shall not be required for the following:

(3) Installation of heating appliances and fuel fired (direct or indirect) water heaters by master or journeyman oil burner technicians or propane and natural gas technicians licensed pursuant to Title 32, Chapter 139 of the *Maine Revised Statutes*.

(4) The work excluded from the definition of “plumbing” in Title 30-A, Section 4201, subsection 3.

(5) Plumbing by regular employees of public utilities as defined in Title 35-A, Section 102, when working as such.

(6) Plumbing by a pump installer who is duly licensed pursuant to Title 32, Section 4700-I, subsection 2, except that this exception is limited to installing piping from the cold water distribution pipe at the pressure tank’s main shut-off valve to the existing water supply piping as long as the piping is located in the same room as the tank, the length of the piping is no longer than 15 feet and the piping does not extend beyond any existing branches. Such plumbing must conform to the board’s laws and rules.

Title 30-A, Definitions, 3. Plumbing

3. Plumbing. "Plumbing" means the installation, alteration or replacement of pipes, fixtures and other apparatus for bringing in potable water, removing wastewater and the piping connections to heating systems using water. Except for the initial connection to a potable water supply and the final connection that discharges indirectly into a public sewer or wastewater disposal system, the following are excluded from this definition:

A. All piping, equipment or material used exclusively for manufacturing or industrial processes; [PL 1987, c. 737, Pt. A, §2 (NEW); PL 1987, c. 737, Pt. C, §106 (NEW); PL 1989, c. 6 (AMD); PL 1989, c. 9, §2 (AMD); PL 1989, c. 104, Pt. C, §§8, 10 (AMD).]

B. The installation or alteration of automatic sprinkler systems used for fire protection and standpipes connected to automatic sprinkler systems or overhead; [PL 1987, c. 737, Pt. A, §2 (NEW); PL 1987, c. 737, Pt. C, §106 (NEW); PL 1989, c. 6 (AMD); PL 1989, c. 9, §2 (AMD); PL 1989, c. 104, Pt. C, §§8, 10 (AMD).]

C. Building drains outside the foundation wall or structure; [PL 1987, c. 737, Pt. A, §2 (NEW); PL 1987, c. 737, Pt. C, §106 (NEW); PL 1989, c. 6 (AMD); PL 1989, c. 9, §2 (AMD); PL 1989, c. 104, Pt. C, §§8, 10 (AMD).]

D. The replacement of fixtures with similar fixtures at the same location without any alteration of pipes; or [PL 1987, c. 737, Pt. A, §2 (NEW); PL 1987, c. 737, Pt. C, §106 (NEW); PL 1989, c. 6 (AMD); PL 1989, c. 9, §2 (AMD); PL 1989, c. 104, Pt. C, §§8, 10 (AMD).]

E. The sealing of leaks within an existing line. [PL 1987, c. 737, Pt. A, §2 (NEW); PL 1987, c. 737, Pt. C, §106 (NEW); PL 1989, c. 6 (AMD); PL 1989, c. 9, §2 (AMD); PL 1989, c. 104, §§8, 10 (AMD).]

[RR 2017, c. 1, §21 (COR).]

Who can Apply for an Internal Plumbing Permit?

Only the following persons may apply for and obtain plumbing permits: PEB Rules Chapt. 4, Section 104.1

(i) A person with a valid and current master plumber license issued by the board pursuant to Title 32, Section 3501, subsection 2-A; or

(ii) Pursuant to Title 32, Section 3302, subsection 1(C), any person in a single-family residence occupied or to be occupied by that person as that person's bona fide personal abode as long as the installation conforms with the board laws and rules.

Chapter 49: PLUMBERS

Subchapter 1: GENERAL PROVISIONS

§3302. Applicability

1. **License required.** A license is required for any individual who is engaged in plumbing or performing plumbing installations. No license is required for any activity for which a permit is not required under [Title 30, section 3223](#) or its successor. This section does not apply to the following:

A. Plumbing by regular employees of public utilities as defined in [Title 35-A, section 102](#), when working as such; [PL 1987, c. 141, Pt. B, §33 (AMD).]

B. Plumbing by oil burner technicians, duly licensed under [chapter 139](#), and propane and natural gas installers, licensed under [chapter 139](#), except that this exception only applies to hot and cold water connections to existing piping in the same room where the installation is taking place and does not apply beyond any existing branch connection supplying water; [PL 2017, c. 210, Pt. D, §3 (AMD).]

C. Plumbing by a person in a single-family residence occupied or to be occupied by that person as that person's bona fide personal abode as long as the installation conforms with board laws and rules; and [PL 2017, c. 210, Pt. D, §3 (AMD).]

D. Plumbing by a pump installer who is duly licensed pursuant to [section 4700-I, subsection 2](#), except that this exception is limited to installing piping from the cold water distribution pipe at the pressure tank's main shut-off valve to the existing water supply piping as long as the piping is located in the same room as the tank, the length of the piping is no longer than 15 feet and the piping does not extend beyond any existing branches. Such plumbing must conform to the board's laws and rules. [PL 2017, c. 210, Pt. D, §3 (NEW).]

[PL 2017, c. 210, Pt. D, §3 (AMD).]

2. **Municipal licenses not required.** A municipality may not require plumbers to be municipally licensed nor may any municipality issue a permit for any plumbing installation unless satisfied that the person, firm or corporation applying for the permit complies with this chapter.

[PL 1999, c. 386, Pt. L, §2 (AMD).]

3. **Supervision of trainee plumber.** A master or journeyman plumber may not have more than 3 trainee plumbers working under the master or journeyman plumber's direct supervision.

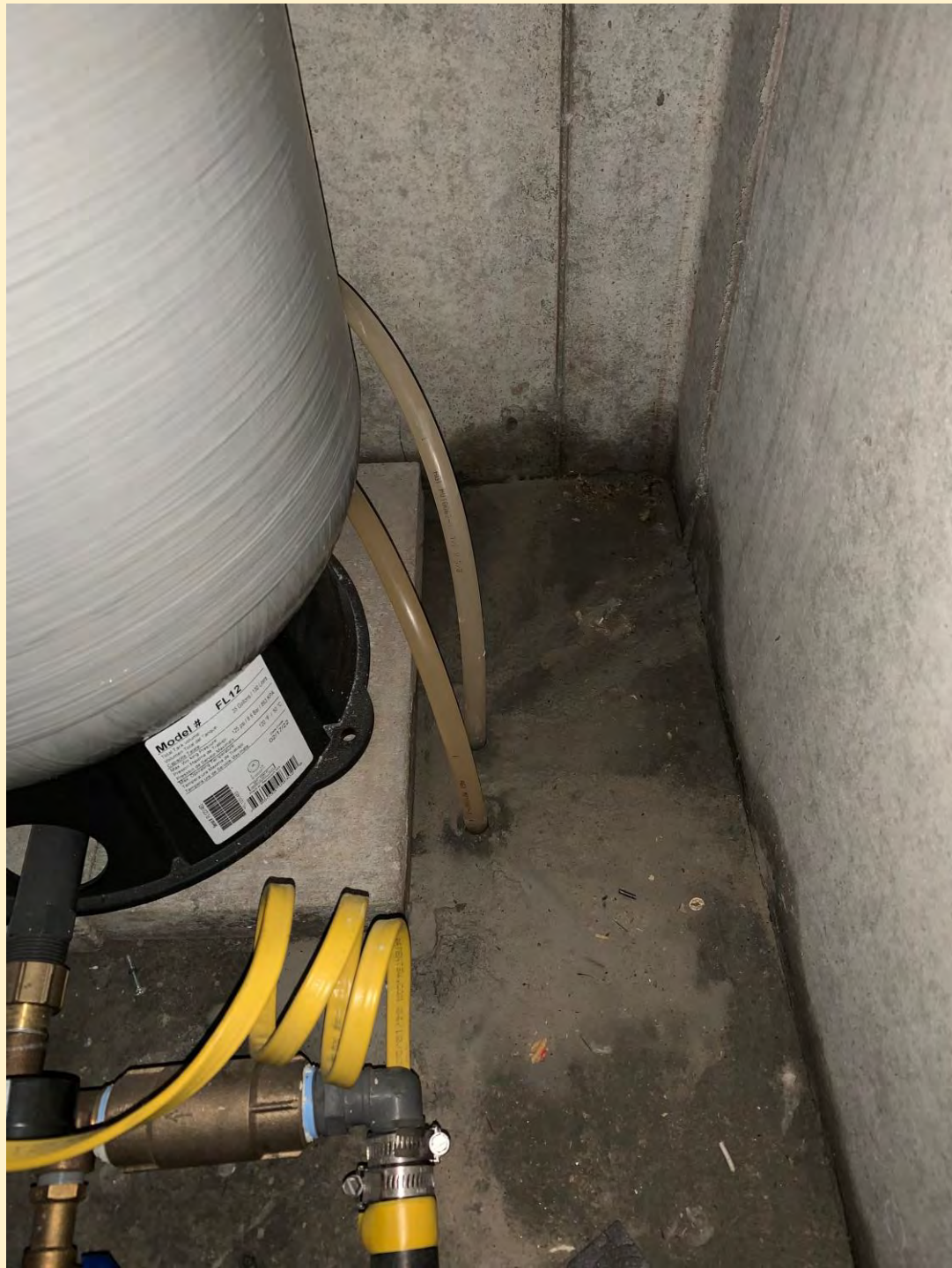
[PL 1999, c. 386, Pt. L, §2 (AMD).]











Title 32: PROFESSIONS AND OCCUPATIONS

Chapter 17: ELECTRICIANS

Subchapter 3: LICENSES

[§1201-B](#)

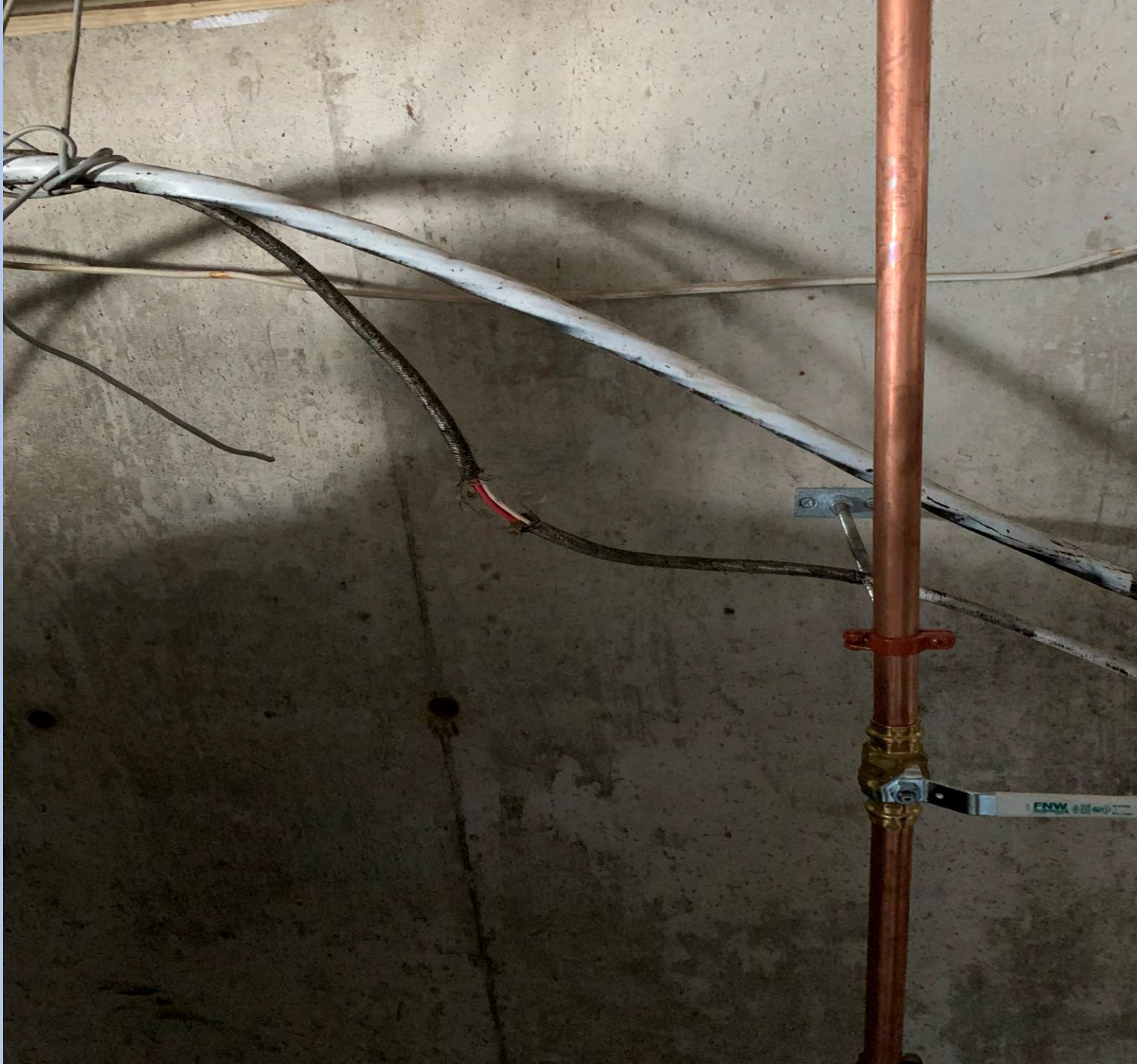
§1201-A. Exceptions to licensing requirements

9. Plumbers. A person licensed under [chapter 49](#), **except that this exemption applies only to disconnection and connection of electrical conductors required in the replacement of water pumps and water heaters of the same or smaller size in residential properties;**

[PL 2011, c. 286, Pt. F, §12 (NEW).]















NOTICE TO INSTALLER
FALLING TO PROTECT THE WARRANTY
DO NOT APPLY POWER TO THE UNIT UNTIL THE UNIT IS FULLY INSTALLED AND ALL CONNECTIONS ARE SECURE.
DO NOT REMOVE THE UNIT FROM THE CRAWLSPACE UNTIL ALL CONNECTIONS ARE SECURE.
DO NOT REMOVE THE UNIT FROM THE CRAWLSPACE UNTIL ALL CONNECTIONS ARE SECURE.

NOTICE À L'INSTALLATEUR
NE PAS APPLIQUER LE PUISSANCE À L'UNITÉ JUSQU'À CE QU'ELLE SOIT COMPLÈTEMENT INSTALLÉE ET QUE TOUTES LES RACCORDEMENTS SONT SÛRS.
NE PAS ENLEVER L'UNITÉ DU CRAWLSPACE AVANT D'ÊTRE SÛR QUE TOUTES LES RACCORDEMENTS SONT SÛRS.
NE PAS ENLEVER L'UNITÉ DU CRAWLSPACE AVANT D'ÊTRE SÛR QUE TOUTES LES RACCORDEMENTS SONT SÛRS.

AVISO PARA EL INSTALADOR
NO APLICAR CORRIENTE ELÉCTRICA AL UNIDAD HASTA QUE ESTE COMPLETAMENTE INSTALADA Y SE HAYA ASEGURADO QUE TODOS LOS CONEXIONES SON SEGUROS.
NO QUITAR LA UNIDAD DEL ESPACIO DE CRAWLSPACE HASTA QUE SE HAYA ASEGURADO QUE TODOS LOS CONEXIONES SON SEGUROS.
NO QUITAR LA UNIDAD DEL ESPACIO DE CRAWLSPACE HASTA QUE SE HAYA ASEGURADO QUE TODOS LOS CONEXIONES SON SEGUROS.

Start Guide

1. Check for proper venting and gas supply.

2. Check for proper water supply and venting.

3. Check for proper electrical supply.

4. Check for proper gas supply.

5. Check for proper venting.

6. Check for proper water supply.

7. Check for proper electrical supply.

8. Check for proper gas supply.

9. Check for proper venting.

10. Check for proper water supply.

IMPORTANT ADVERTENCIA

NO APLICAR CORRIENTE ELÉCTRICA AL UNIDAD HASTA QUE ESTE COMPLETAMENTE INSTALADA Y SE HAYA ASEGURADO QUE TODOS LOS CONEXIONES SON SEGUROS.

NO QUITAR LA UNIDAD DEL ESPACIO DE CRAWLSPACE HASTA QUE SE HAYA ASEGURADO QUE TODOS LOS CONEXIONES SON SEGUROS.

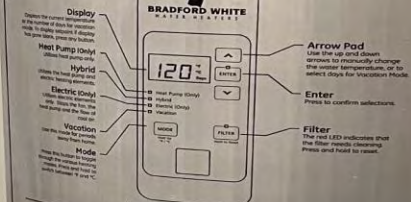
NO QUITAR LA UNIDAD DEL ESPACIO DE CRAWLSPACE HASTA QUE SE HAYA ASEGURADO QUE TODOS LOS CONEXIONES SON SEGUROS.







Quick Start Guide



Modes of Operation

- Heat Pump Only:** Provides the most energy efficient operation.
- Hybrid:** Provides energy savings and backup for cold temperatures.
- Electric Only:** Provides the least energy efficient operation.
- Vacation:** Allows energy use during periods when you are away.

WARNING

AVERTISSEMENT ADVERTENCIA

CAUTION

PRECAUCION

ATTENTION

ATENCIÓN

READ AND UNDERSTAND ALL INSTRUCTIONS BEFORE USING THIS PRODUCT.

LEA Y ENTENDEA TODAS LAS INSTRUCCIONES ANTES DE USAR ESTE PRODUCTO.

READ AND UNDERSTAND ALL INSTRUCTIONS BEFORE USING THIS PRODUCT.

LEA Y ENTENDEA TODAS LAS INSTRUCCIONES ANTES DE USAR ESTE PRODUCTO.

Attention Installer

Required clearances:

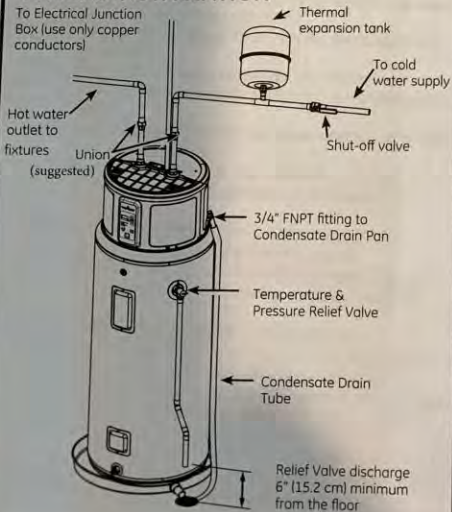
There must be a 7" (17.8 cm) clearance between any object and the rear and sides of the water heater in the event service is needed. A minimum 8" (20.3cm) clearance above the water heater to remove the filter for cleaning and for service access, and clear access to the front of the water heater, is recommended. Installations that require 6" clearance on the sides or rear of the water heater for earthquake straps are also acceptable. **In these cases, additional clearance must be provided on the opposite side of the unit to allow for service access.** The hot and cold water plumbing and electrical connections must not interfere with the removal of the filter.

If a separate ducting kit is purchased, additional space is required above and to the rear of the water heater for installation. Consult the ducting kit manual for specific instructions.



Model appearance may vary.

TYPICAL INSTALLATION



Room size:

Because this unit draws in air from the room to heat the water, the room must be at least 10' x 10' x 7' (700ft³) [3.05m x 3.05m x 2.13m (19.82m³)] or larger. If the room is smaller there must be a louvered door or a ducting kit installed.

Protect Unit:

During installation cover and protect upper part of the unit from potential installation debris.

Installation Checklist:

1. **Tank location:**
 - Does room size require louvered door, ducting, or similar ventilation? 10' x 10' x 7' (700 cu. ft.) or 240 square inches (0.15 m²) open air-flow area needed.
 - Back of unit **away from wall** by 7 inches (17.5 cm), and sides have at least 7 inches (17.5 cm) clearance. (6 inches clearance for earthquake strap installations).
 - **Front** of unit is free and clear.
 - Is the water heater **level**? If no, add shims under the base of the unit to ensure proper function of sensors.
2. Verify **Air Filter** is installed. (Located in packaging).
3. **Plumbing connections:**
 - Does not prevent **air filter** removal.
 - No leaks after **filling** the tank with water, either when water is flowing or not.
4. **Condensate lines are in place:**
 - Main flexible or rigid drain line installed and directed to a drain or condensate pump. Reducer fittings are not recommended.
5. **Temperature and pressure-relief valve** is working and drain line completed per local code.
6. **Electrical:** Verify 208/240 VAC to L1 and L2 at tank.
7. **Electrical** connection does not prevent air filter removal.
8. Verify **control panel** displays 120°F (49°C) Hybrid mode. Assist user in how to adjust temperature and modes (see "About the Water Temperature Setting" section on page 7 of the Owner's Manual).

Normal Startup Conditions:

Once the tank is full and power is energized, you may experience the following:

Elapsed Time	HEWH Actions	Comments
0 to 2 minutes	Unit will go through self-check and display countdown.	This 2-minute off-time prevents compressor damage.
2 to 22 minutes	Compressor and fan turn on.	This 20-minute period is used to ensure the tank is full of water (Dry-fire prevention algorithm).
22 minutes and beyond	Compressor and fan turn off, heating elements turn on. After initial heat-up, elements turn off and compressor turns on.	The water heater is operating in Hybrid mode, quickly providing an initial amount of hot water before switching to the efficient heat pump for the majority of heating.

NOTE: Heat Pump operating range is 35°F - 120°F [2°C-49°C].

Room size:

Because this unit draws in air from the room to heat the water, the room must be at least 10' x 10' x 7' (700ft³) [3.05m x 3.05m x 2.13m (19.82m³)] or larger. If the room is smaller there must be a louvered door or a ducting kit installed.

Protect Unit:

During installation cover and protect upper part of the unit from potential installation debris.

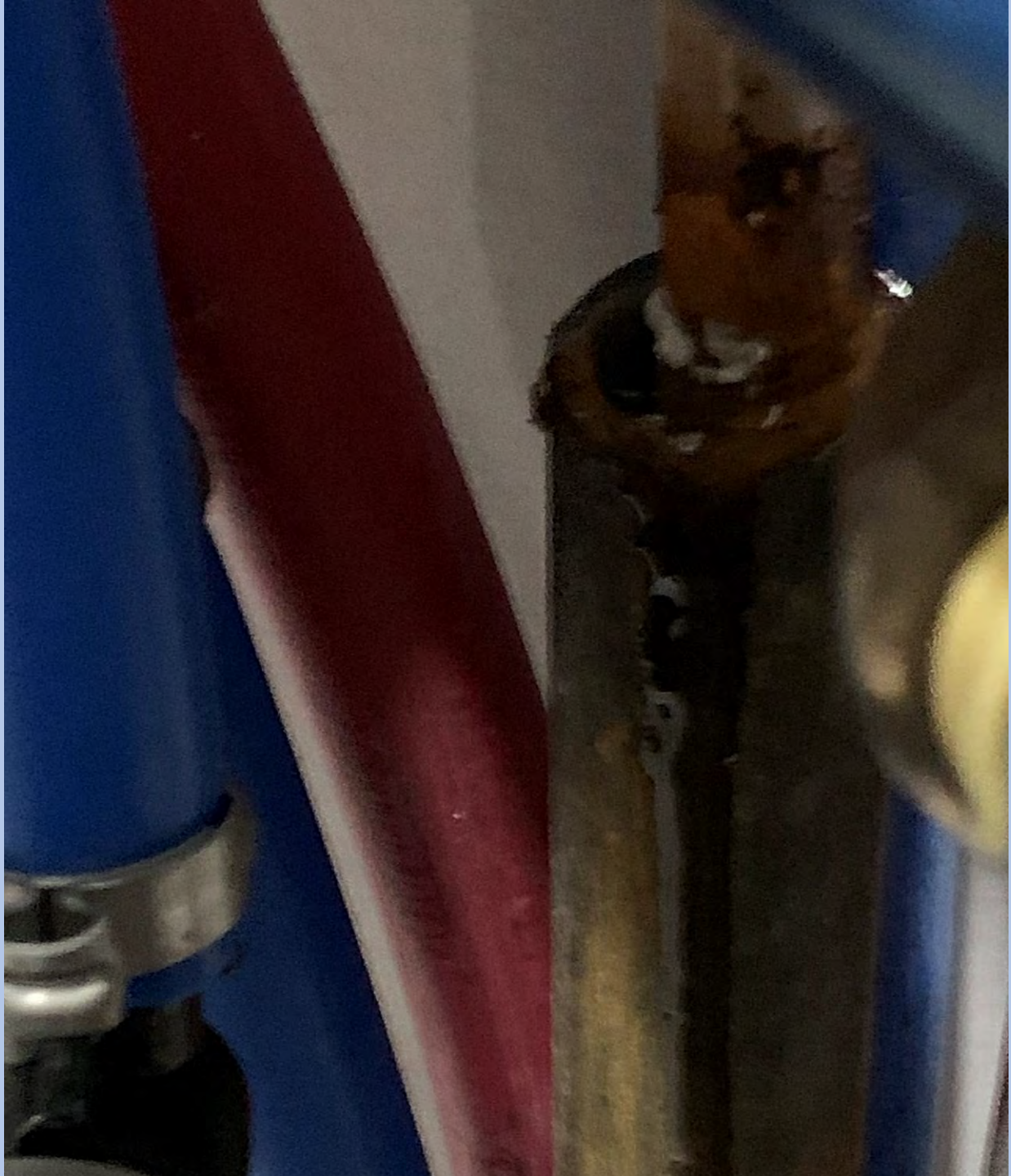
Installation Checklist:

1. Tank location:

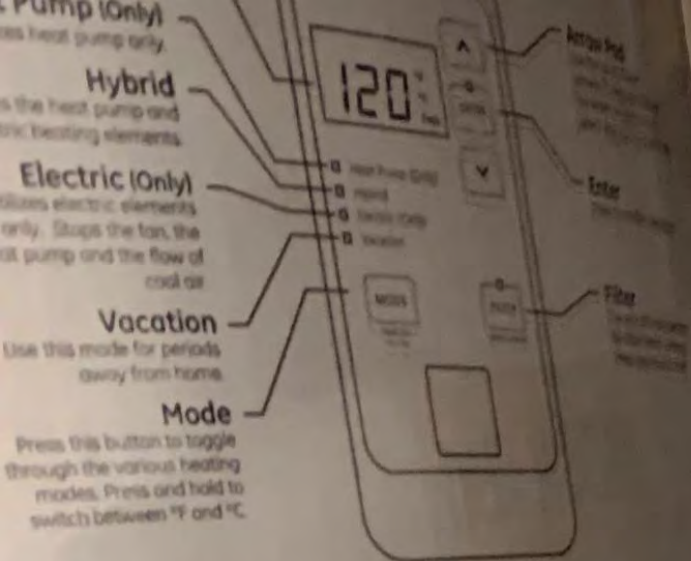
- Does room size require louvered door, ducting, or similar ventilation? 10' x 10' x 7' (700 cu. ft.) or 240 square inches (0.15 m²) open air-flow area needed.
- Back of unit **away from wall** by 7 inches (17.5 cm), and sides have at least 7 inches (17.5 cm) clearance. (6 inches clearance for earthquake strap installations).
- **Front** of unit is free and clear.
- Is the water heater **level**? If no, add shims under the base of the unit to ensure proper function of sensors.

2. Verify **Air Filter** is installed. (Located in packaging).









Modes of Operation

- Heat Pump (Only)**
Provides the greatest energy savings.
- Hybrid**
Balances energy savings and provides for water conservation.
- Electric (Only)**
Provides the most energy savings after the fan, the heat pump and the distribution system.
- Vacation**
Minimizing or eliminating automatic setpoint adjustments.



STAIR TREADS

3/8" of the tread is the recommended installation cover any of the manufacturer's instructions and please follow the instructions for the product and please use the following instructions for the product.

1. Measure and cut treads only after the previous tread has been installed.

2. Cut down the width of treads with a sliding compound miter saw.

3. Lay a tack strip (or similar material) in a groove in the wall along the entire length of the product.

4. Make the connection with the wall using the length of the product.

5. Make the connection with the wall using the length of the product.

6. Lay a tack strip (or similar material) in a groove in the wall along the entire length of the product.

7. Measure and cut treads only after the previous tread has been installed.

8. Cut down the width of treads with a sliding compound miter saw.

9. Lay a tack strip (or similar material) in a groove in the wall along the entire length of the product.

10. Make the connection with the wall using the length of the product.





1-1/2" PVC TYPE





Condensate Removal

- **An approved neutralizer must be installed**
- **Condensate must enter the sanitary system through an open receptor**
- **Vinyl tubing from condensate pump must only be utilized vertically from the pump**
- **Pump must be interlocked electrically with appliance to stop operation in case of pump failure**

Condensate Drain and Disposal for Fuel-Fired Appliances

- 1. An approved neutralizer shall be installed in the condensate drain system of all fuel-fired condensing appliances, so that the condensate is rendered innocuous.**
- 2. Condensate from fuel-fired appliances shall be drained into an existing open receptor through an air gap fitting, that is connected to a sanitary drainage system in accordance with the currently adopted rules of the Maine Plumbers Examining Board.**
- 3. If there is no existing open receptor, connection to a sanitary drainage system must be done by a Maine licensed Master or Journeyman plumber utilizing a permit in accordance with the currently adopted rules of the Maine Plumbers Examining Board.**

- 4. Condensate shall not be disposed of by routing through a floor and into a perimeter drain system or underneath a slab.**
- 5. When the installation requires a condensate pump, the condensate pump must be installed in accordance with the manufacturer's instructions. The condensate pump discharge shall rise vertically to a point where it is possible to discharge to an open receptor connected to the sanitary drainage system.**
- 6. When the installation requires a condensate pump, the condensate pump must be interlocked with the appliance to prevent the appliance from operating if the condensate pump fails**
- 7. Each fuel-fired condensing appliance requiring a condensate pump shall be provided with its own individual condensate pump.**

State Internal Plumbing Rules

All piping and safety controls on water heaters, domestic water connections to boilers and condensate disposal systems from fuel-fired condensing appliances must be made in accordance with the current adopted rules of the Maine Plumbers Examining Board.



Taco
8000

EMERGENCY STOP
AUTOMATIC SWITCH

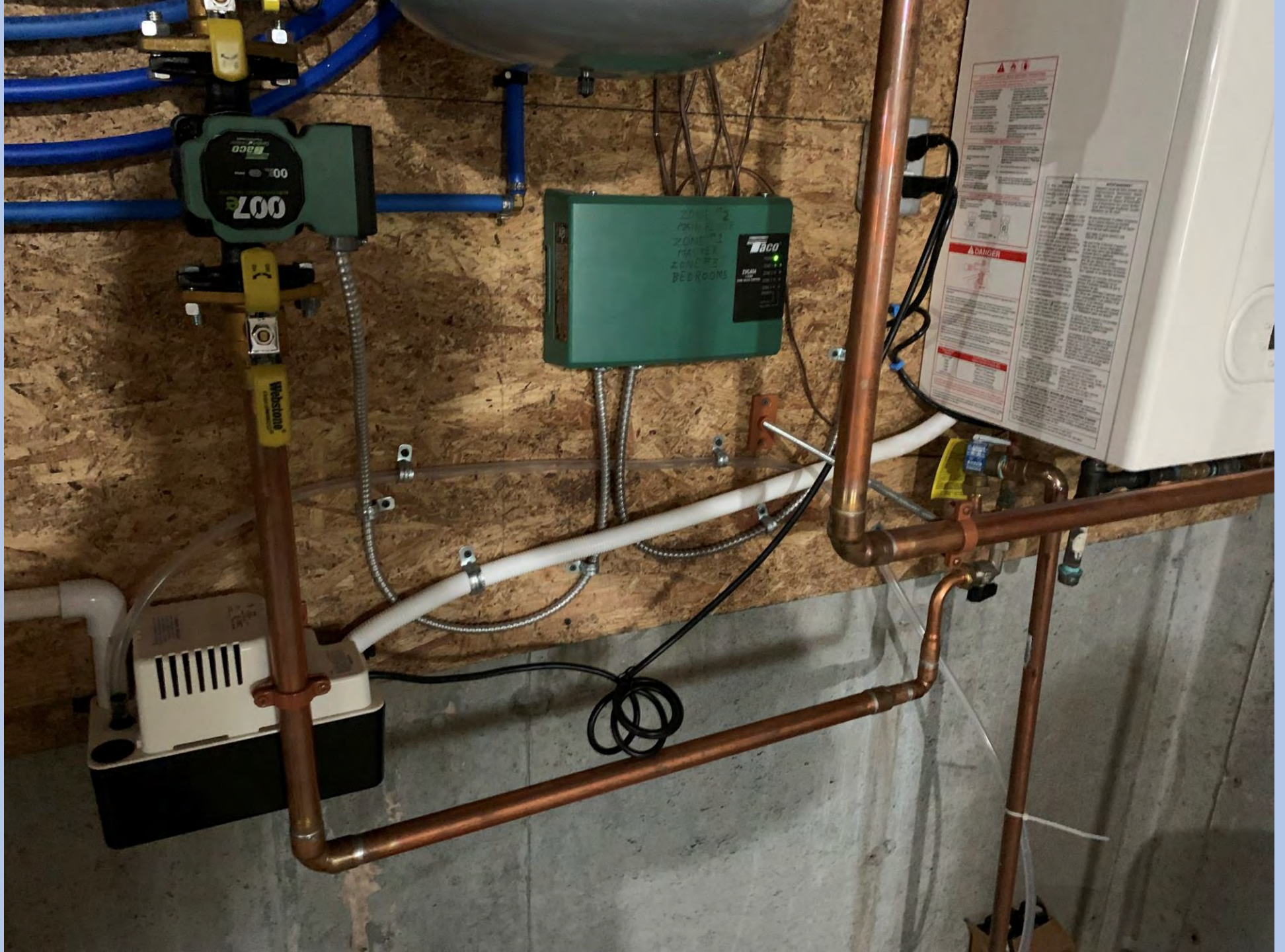


Rinnai

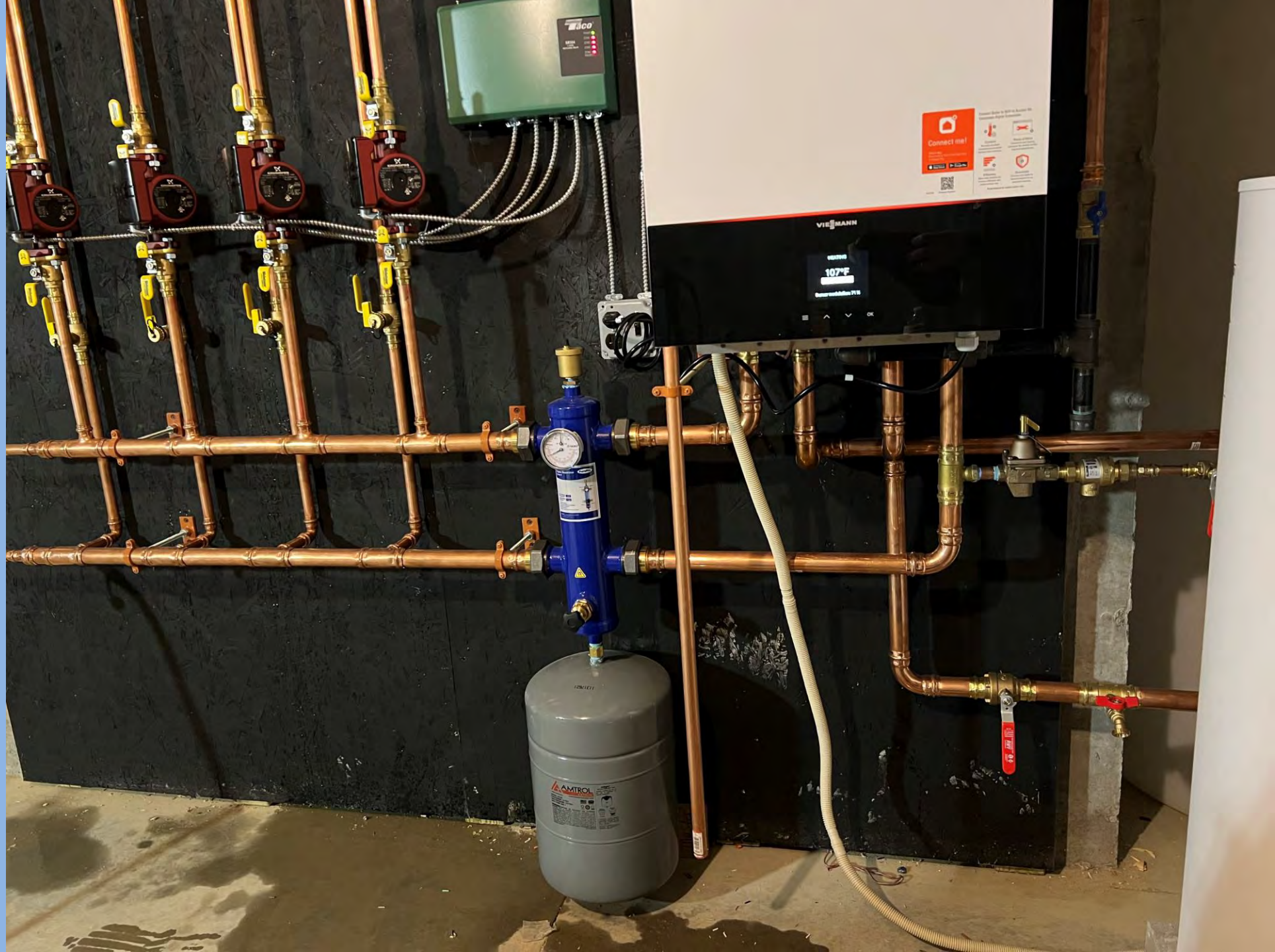












DH-16-1

DRAIN HOSE

IVORY

Φ16mm(5/8")x50M(164')

Poly Ethylene

INABA DENKO



Rectorseal (Thailand) Company

Product Code 83002

DH16

QTY. 1



1 0 0 2 1 4 4 9 8 3 0 0 2 4

MADE IN THAILAND

The material that this RectorSeal Mini-Split Drain Hose is composed of is Polyethylene, this material is not UPC rated for any State of Maine Internal Drainage System, which Condensate Drains are an Internal Plumbing System (all Internal Plumbing inside a building and to a point of 24" outside the foundation). 2021 UPC Table 701.2, states that Polyethylene material can only be used for Building Sewer Pipe and Fittings – (Building Sewer starts at 2 feet outside the Foundation wall)

**TABLE 701.2
MATERIALS FOR DRAIN, WASTE, VENT PIPE AND FITTINGS**

MATERIAL	UNDERGROUND DRAIN, WASTE, VENT PIPE AND FITTINGS	ABOVEGROUND DRAIN, WASTE, VENT PIPE AND FITTINGS	BUILDING SEWER PIPE AND FITTINGS	REFERENCED STANDARD(S) PIPE	REFERENCED STANDARD(S) FITTINGS
ABS (Schedule 40)	X	X	X	ASTM D2661, ASTM D2680*	ASME A112.4.4, ASTM D2661, ASTM D2680*
Cast-Iron	X	X	X	ASTM A74, ASTM A888, CISPI 301	ASME B16.12, ASTM A74, ASTM A888, CISPI 301
Co-Extruded ABS (Schedule 40)	X	X	X	ASTM F628	ASME A112.4.4, ASTM D2661, ASTM D2680*
Co-Extruded Composite (Schedule 40)	X	X	X	ASTM F1488	ASME A112.4.4, ASTM D2661, ASTM D2665, ASTM F794*, ASTM F1866
Co-Extruded PVC (Schedule 40)	X	X	X	ASTM F891, ASTM F1760	ASME A112.4.4, ASTM D2665, ASTM F794*, ASTM F1336*, ASTM F1866
Copper and Copper Alloys (Type DWV)	X	X	X	ASTM B43, ASTM B75, ASTM B251, ASTM B302, ASTM B306	ASME B16.23, ASME B16.29
Galvanized Malleable Iron	—	X	—	—	ASME B16.3
Galvanized Steel	—	X	—	ASTM A53	—
Polyethylene	—	—	X	ASTM F714, ASTM F894	—
PVC (Schedule 40)	X	X	X	ASTM D1785, ASTM D2665, ASTM F794*	ASME A112.4.4, ASTM D2665, ASTM F794*, ASTM F1866
PVC (Sewer and Drain)	—	—	X	ASTM D2729	ASTM D2729
PVC PSM	—	—	X	ASTM D3034	ASTM D3034
Stainless Steel 304	—	X	—	ASME A112.3.1	ASME A112.3.1
Stainless Steel 316L	X	X	X	ASME A112.3.1	ASME A112.3.1
Vitrified Clay (Extra strength)	—	—	X	ASTM C700	ASTM C700

* For building sewer applications.

UPC 301.2 Minimum Standards.

Pipe, pipe fittings, traps, fixtures, material, and devices used in a plumbing system shall be listed (third-party certified) by a listing agency (accredited conformity assessment body) as complying with the approved applicable recognized standards referenced in this code, and shall be free from defects. Unless otherwise provided for in this code, materials, fixtures, or devices used or entering into the construction of plumbing systems, or parts thereof shall be submitted to the Authority Having Jurisdiction for approval prior to being installed.

To: Richard Garza <richard.garza@rectorseal.com>; RS-Techservice <techservice@rectorseal.com>
Subject: RE: Technical Support Inquiry from Website

Thanks – I assume they don't have any listing at all (UL or other 3rd party listing)

From: Richard Garza <richard.garza@rectorseal.com>
Sent: Tuesday, June 7, 2022 3:53 PM
To: Peter Kelly <Peter.Kelly@iapmo.org>; RS-Techservice <techservice@rectorseal.com>
Subject: RE: Technical Support Inquiry from Website

CAUTION: This email originated from outside of the organization. Do not click links or open attachments unless you recognize the sender and know the content is safe.

Peter : The hoses are not UL listed .
Hope this helps.
Thanks

Richard Garza
Technical Service Representative



A CSW Industrials Company

RectorSeal
2601 Spenwick Drive, Houston, Texas 77055
Direct 713.929.4296 Office 713.263.8001
Richard.Garza@rectorseal.com
rectorseal.com

From:
Sent: Tuesday, June 7, 2022 2:11 PM
To: RS-Techservice <techservice@rectorseal.com>;
Subject: Technical Support Inquiry from Website



Day, Michael W

From: Peter Kelly <Peter.Kelly@iapmo.org>
Sent: Wednesday, July 20, 2022 11:55 AM
To: Day, Michael W
Subject: Rector seal

EXTERNAL: This email originated from outside of the State of Maine Mail System. Do not click links or open attachments unless you recognize the sender and know the content is safe.

Hi Mike,

The product is not listed at all (see emails below). I believe the UPC designation is a Universal Product Code

From: Richard Garza <richard.garza@rectorseal.com>
Sent: Tuesday, June 7, 2022 3:56 PM
To: Peter Kelly <Peter.Kelly@iapmo.org>; RS-Techservice <techservice@rectorseal.com>
Subject: RE: Technical Support Inquiry from Website

CAUTION: This email originated from outside of the organization. Do not click links or open attachments unless you recognize the sender and know the content is safe.

That is correct.
Thanks

Richard Garza
Technical Service Representative



A CSW Industrials Company

RectorSeal
2601 Spenwick Drive, Houston, Texas 77055
Direct 713.929.4296 Office 713.263.8001
Richard.Garza@rectorseal.com
rectorseal.com

From: Peter Kelly <Peter.Kelly@iapmo.org>
Sent: Tuesday, June 7, 2022 2:55 PM

814.3 Condensate Waste Pipe Material and Sizing.

Condensate waste pipes from air-cooling coils shall be sized in accordance with the equipment capacity as specified in UPC Table 814.3. The material of the piping shall comply with the pressure and temperature rating of the appliance or equipment and shall be approved for use with the liquid being discharged

MINIMUM CONDENSATE PIPE SIZE

For SI units: 1 ton of refrigerant = 3.52 kW, 1
inch = 25 mm

EQUIPMENT CAPACITY IN TONS
OF REFRIGERATION

MINIMUM CONDENSATE PIPE
DIAMETER

(inches)

Up to 20 tons -- 3/4"

The size of condensate waste pipes is for one unit or a combination of units, or as recommended by the manufacturer.

The capacity of waste pipes assumes a 1/8 inch per foot (10.4 mm/m) or 1 percent slope, with the pipe running three-quarters full at the following pipe conditions:

Condensate drain sizing for other slopes or other conditions shall be approved by the Authority Having Jurisdiction.

Air-conditioning waste pipes shall be constructed of materials specified in UPC Chapter 7.

By the UPC Code requirements listed above,
RectorSeal Mini-Split Drain Hose, does not, and did
not, meet the requirements of the Maine State Laws
and Rules and the Maine adopted 2015 - 2021 UPC
Internal Uniform Plumbing Code.

Residential Registered Vendor Agreement Form

Page 2 of 4 Rev. 06.27.2022

Section 4: Terms and Conditions

As an Efficiency Maine Registered Vendor, I agree to the following terms and conditions:

- 1. General – Vendor shall abide and be bound by these Efficiency Maine Terms and Conditions, and any supplemental program-specific terms and conditions, in connection with participation or performance under any Efficiency Maine program. Vendor shall abide by all applicable Local, State and Federal laws, ordinances, building codes, regulations, and licensing requirements. Vendor shall, throughout the entire term of this Agreement, maintain in good standing all required licenses, certifications, qualifications and permits necessary for the performance of work or services for customers under the program.**

Residential Registered Vendor Agreement Form

Page 2 of 4 Rev. 06.27.2022

Section 4: Terms and Conditions

As an Efficiency Maine Registered Vendor I agree to the following terms and conditions:

1. General – Vendor shall abide and be bound by these Efficiency Maine Terms and Conditions, and any supplemental program-specific terms and conditions, in connection with participation or performance under any Efficiency Maine program. Vendor shall abide by all applicable Local, State and Federal laws, ordinances, building codes, regulations, and licensing requirements. Vendor shall, throughout the entire term of this Agreement, maintain in good standing all required licenses, certifications, qualifications and permits necessary for the performance of work or services for customers under the program.

2. Subcontractors - In cases where subcontractors are used to perform upgrade(s), the Residential Registered Vendor is still responsible for ensuring full compliance with all Efficiency Maine program requirements, including the Code of Conduct.







































CODE Pict's

PARABOND[®]

PVC CEMENT

P-10A

PEGAMENTO

Para PVC

Medium Bodied • Clear

Viscosidad Media • Transparente

For rigid pipe sizes with interference fit thru 6" diameter, Sch. 80 thru 4" diameter. For potable water, irrigation, conduit, drain, DWV and foam core. Can be used without primer on non-pressure systems if local codes permit. **The Uniform Plumbing Code requires the use of a listed purple primer.**

Para tubería rígida de interferencia hasta 160 mm. de diámetro, Ced. 80 hasta 110 mm. de diámetro. Para agua potable, riego, cañerías, drenaje, tubos DWV y tubos espumados. Puede ser usado sin primer en sistemas sin presión si los códigos locales lo permiten. **El Código Uniforme de Plomería requiere el uso de un primer morado listado.**

1 Quart (32 Fl. Oz. U.S.) • Cont. Net. 946 mL

DANGER/PELIGRO: HIGHLY FLAMMABLE. VAPOR HARMFUL. MAY BE HARMFUL OR FATAL IF SWALLOWED. MAY IRRITATE SKIN OR EYES. READ CAREFULLY CAUTIONS ON LEFT PANEL. ALTAMENTE INFLAMABLE. VAPOR PELIGROSO. PUEDE SER PELIGROSO O FATAL SI SE INGIERE. PUEDE IRRITAR LA PIEL Y LOS OJOS. LEA LAS PRECAUCIONES A LA IZQUIERDA.

- can. Read Product Bulletin and SDS.
1. Cut pipe square and deburr. Clean and dry joining surfaces.
 2. Check dry fit. Fitting should go over end of pipe easily but become tight about 1/3 to 2/3 of the way on.
 3. Use a suitable applicator at least 1/2 the size of pipe diameter; for larger sizes use brush or roller.
 4. Clean pipe with Parabond C-70 Cleaner. Apply primer if required. **The Uniform Plumbing Code requires the use of a listed purple primer.**
 5. Apply a full, even layer of cement on the pipe equal to the depth of socket. Coat the fitting socket with a medium layer. Avoid excess and puddling. If necessary, apply a second, full layer on pipe. Cement should fill all gaps.
 6. On bell end pipe, do not coat beyond socket depth or allow cement to run beyond bell.
 7. Assemble while wet. If not wet, recoat parts before assembly. Twist 1/8 to 1/4 turn until reaching pipe stop. To avoid pushout, hold for about 30 seconds. Wipe off excess. Handle newly

10
bar
primate

diameter.
be used
The Uniform

comes with
argument
Hogar
1. Con
2. Pr
extrem
3. Use
más gran
4. Lim
requer
morado
5. Apl
cavida
conexi
aplique
los esp
6. Con
adentro
7. Inse
mañe





Forrelli Finest Quality Tea
← SLIDE TOP TO OPEN →

REGULAM - W
MAY 15 2015 10:00 AM
SPE: 147422007
S/N: 147422007

State WATER HEATERS
ProLine
COMMERCIAL GRADE

⚠ DANGER
Do not touch the tank or its components. The tank and its components are extremely hot and can cause serious burns or death. Do not touch the tank or its components until it has cooled down. Do not touch the tank or its components if you are wearing gloves. Do not touch the tank or its components if you are wearing jewelry. Do not touch the tank or its components if you are wearing a watch. Do not touch the tank or its components if you are wearing a ring. Do not touch the tank or its components if you are wearing a bracelet. Do not touch the tank or its components if you are wearing a necklace. Do not touch the tank or its components if you are wearing a earring. Do not touch the tank or its components if you are wearing a hairpin. Do not touch the tank or its components if you are wearing a hairbrush. Do not touch the tank or its components if you are wearing a hair comb. Do not touch the tank or its components if you are wearing a hair tie. Do not touch the tank or its components if you are wearing a hair clip. Do not touch the tank or its components if you are wearing a hair curler. Do not touch the tank or its components if you are wearing a hair straightener. Do not touch the tank or its components if you are wearing a hair dryer. Do not touch the tank or its components if you are wearing a hair iron. Do not touch the tank or its components if you are wearing a hair curling iron. Do not touch the tank or its components if you are wearing a hair curling wand. Do not touch the tank or its components if you are wearing a hair curling brush. Do not touch the tank or its components if you are wearing a hair curling comb. Do not touch the tank or its components if you are wearing a hair curling clip. Do not touch the tank or its components if you are wearing a hair curling ring. Do not touch the tank or its components if you are wearing a hair curling necklace. Do not touch the tank or its components if you are wearing a hair curling bracelet. Do not touch the tank or its components if you are wearing a hair curling watch. Do not touch the tank or its components if you are wearing a hair curling ring. Do not touch the tank or its components if you are wearing a hair curling necklace. Do not touch the tank or its components if you are wearing a hair curling bracelet. Do not touch the tank or its components if you are wearing a hair curling watch.

ENERGYGUIDE
\$ 423





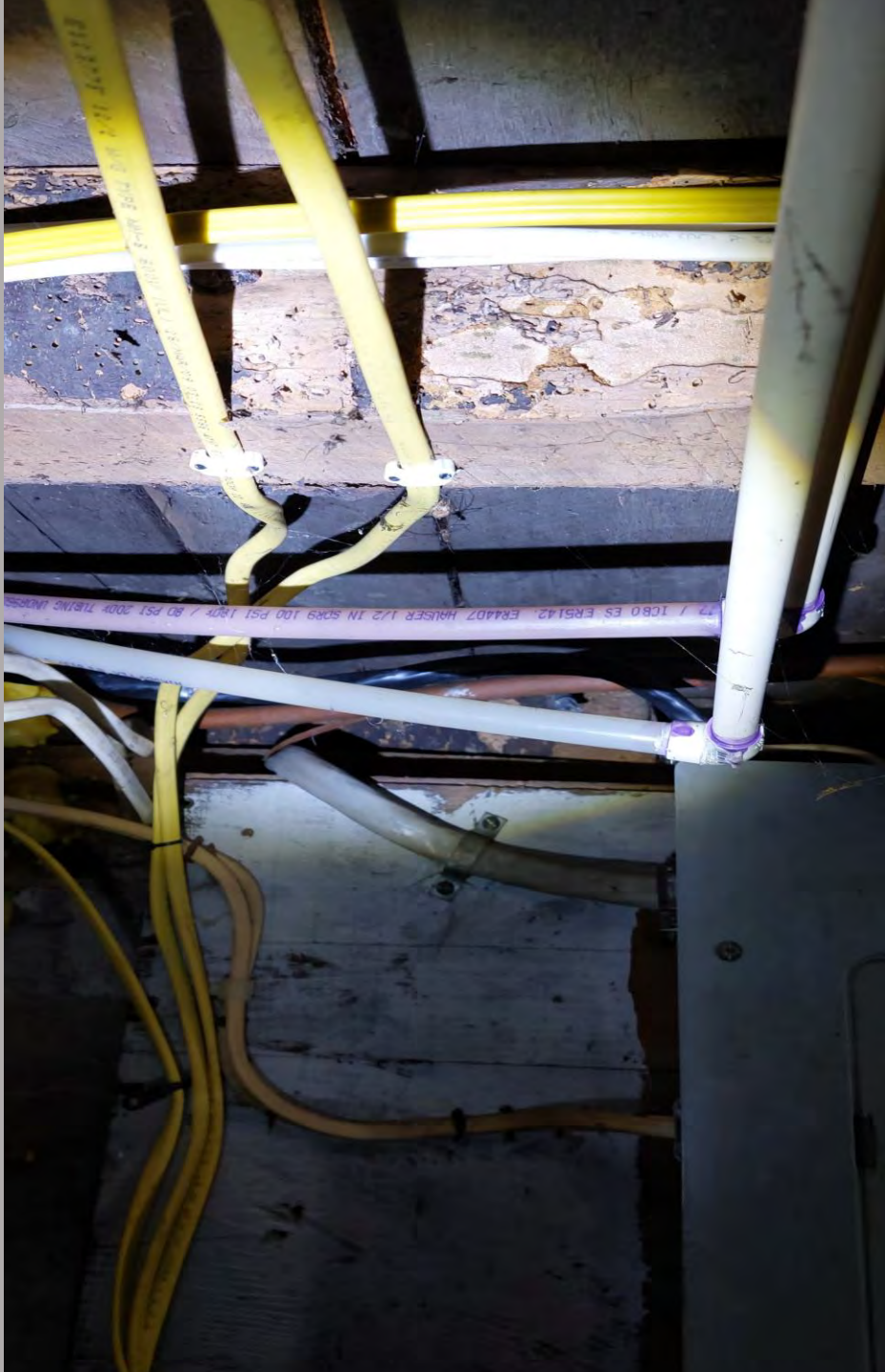
RX

RX



200 2-PVC TYPE 1 SCH 40 NSF-DWV RSTM D 2665
PVC 1120

Made in America









A sunset scene over a body of water. The sun is low on the horizon, creating a bright orange and yellow glow that reflects on the water. The sky transitions from orange near the horizon to a deep blue at the top. On the right side, a large ship is visible, partially obscured by the darkening light. Two wooden posts are in the water in the foreground. The text "END?" is overlaid in the center in a bold, red, sans-serif font.

END?