



STATE OF MAINE
PUBLIC UTILITIES COMMISSION

Philip L. Bartlett, II
CHAIRMAN

Amy Dumeny
ADMINISTRATIVE DIRECTOR

Patrick Scully
Carolyn C. Gilbert
COMMISSIONERS

CASD MEMO 2025-03

To: All Maine Eligible Telecommunication Carriers (ETCs)
From: Kathleen Poetzsch, *Kathleen Poetzsch*
Secretary, Consumer Assistance and Safety Division (CASD)
Date: January 14, 2025
Re: Reminder to File 2024 Annual Credit and Collection Report / Procedure for Filing

This memo is a reminder that all Maine Eligible Telecommunication Carriers must file the **2024 Annual Credit and Collection Report** by **April 1, 2025**. The period covered by the report would be from January 1 through December 31, 2024.

All utilities must file annual credit and collection reports using the Commission’s Case Management System (CMS). In order to file the report, utilities must be registered users.

Included with this memo are the following:

- Instructions for becoming a registered user (if you are not currently registered).
- Instructions for filing your annual credit and collection report.

A copy of the 2024 report form to submit is available on the PUC’s website, at the following link, under **Forms for Utilities: All Eligible Telecommunications Carriers:** <https://www.maine.gov/mpuc/online-services/forms-applications>.

If you have any questions, please contact me, at 207-287-4940 or by email at: kathy.poetzsch@maine.gov. Thank you.

KP
Attachments

How do I Register to Participate in Cases in the New Electronic Case Filing Application?

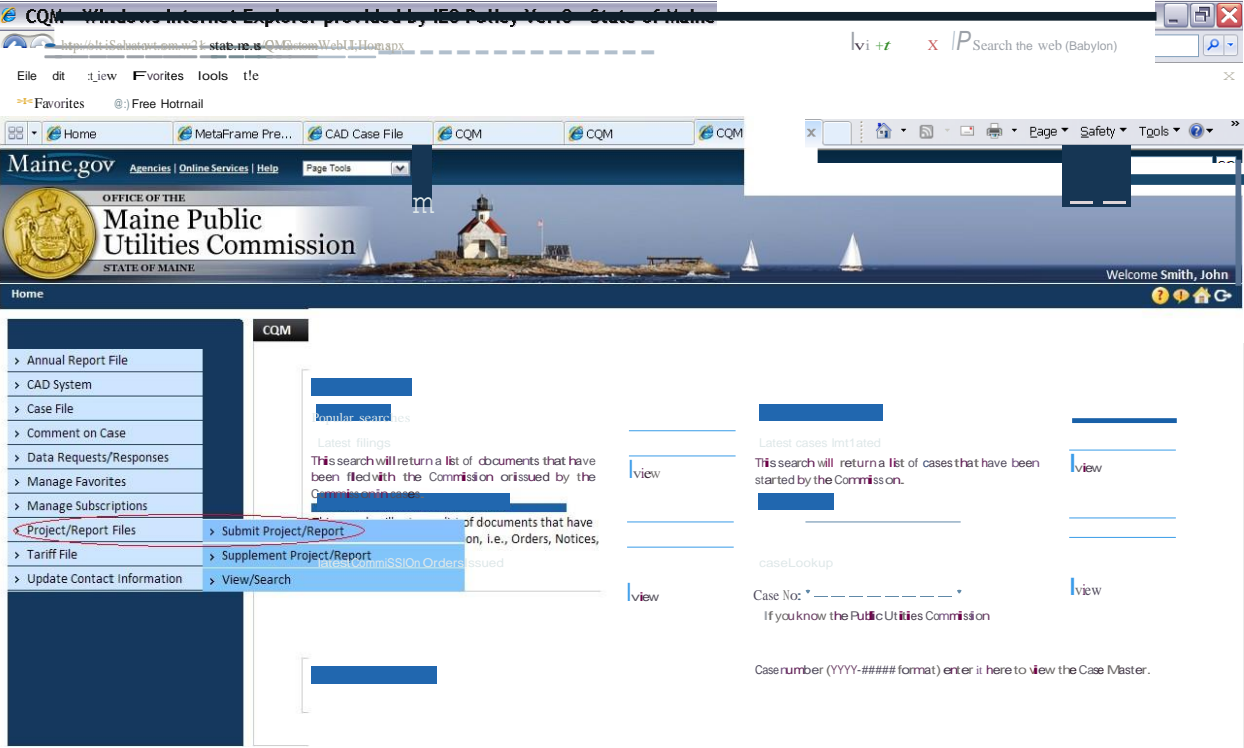
If you are participating in a case at the MPUC now, there are steps you should take when the new Electronic Case Filing Application becomes effective.

- First, register as a User. Click on the Registered Users button on the MPUC web page, then click on New User Registration. Fill in the fields, considering the following:
 - Required fields are denoted by red asterisks.
 - User IDs must be at least 8 characters long and cannot have spaces
 - Passwords must be at least 8 characters long and must include numbers, at least one Upper Case Letter, and at least one special character
 - The first Company/Organization field is the company you work for (which may not be the company you represent for PUC purposes)
- The Representing Company/Organization field is for the company you represent. This is not required except that if you will be filing in cases as representing a company or companies, then you will need to add those companies to your profile.
 - To populate your profile with the companies that you represent, click the “Add” hyperlink. All regulated utilities will be available to choose from. The window allows you to add criteria to shorten the list to select from, such as utility type, the first few letters of the company name, etc. Check the box next to the company(ies) you wish to add and click on the select button.
 - If you represent an organization that is not a utility, you may choose “Other” and “Other” as the Industry Type and Subtype, and search for your organization. If it is not present, call the Commission at 287-3831 and ask that it be added.
 - You may add more than one company or organization. You may return to the screen in the future to add more companies/organizations or to remove them.
- The Registration screen requires the use of SPAM proof software called reCAPTCHA, so you will have to enter the two odd words presented to you in order to complete the registration process. If you cannot read one or more of the words, click on the refresh icon on the top right to get a new pair of words until you can read both.
- After submitting your registration you will receive an email notification with a hyperlink and instructions. You must go to the hyperlinked page and confirm your registration. (if clicking on the hyperlink does not work in your email system, copy and paste it into your browser’s URL field to go to the confirmation screen. Once this is done you will be registered to submit documents into the new application.
- Next, put yourself on the “Notification List” for each case you are participating in. To do this, again click on the Registered User button and log in using your User ID and password. Click on Manage Subscriptions. Partway down the screen, click on Subscribe to Case Notification List.
- On the next screen, enter the case number you are participating in. Click in all three boxes to receive notification of all filings made in the case. Hit Subscribe.
- The Lead MPUC staff person in the case will be alerted that you have completed this process.

How to File an Annual Credit and Collection Report

Please Note: the PUC's updated link to reach the report filing section of our new website is: <https://www.maine.gov/mpuc/online-services/forms-applications>

Once you have logged in using your Username and Password, the screen below will appear. Click on Project/Report Files then Submit Project/Report



After clicking Submit Project/Report, the screen below will appear. All of the required fields must be completed in order to file report. On this screen, you will choose Annual Credit and Collection Report

Report/Project Submission - Windows Internet Explorer provided by IE8 Policy Ver.8 - State of Maine

http://oit-isa1uatppt.som.w2k.state.me.us/CQM.Custom.WebUI/ReportProjectSubmission/ReportProjectSubmissionExternal.aspx

McAfee

Search the web (Babylon)

File Edit View Favorites Tools Help

Home MetaFrame Pre... CAD Case File CQM CQM Report/Proje...

Maine.gov Agencies | Online Services | Help Page Tools GO State Search: GO

OFFICE OF THE
Maine Public
Utilities Commission
STATE OF MAINE

Welcome Smith, John

Home

Report/Project Submission

SUBMIT BACK

Report/Project Submission

* Utility/Industry Type: Electric * Utility/Industry Subtype: Transmission and Distribution Utilities (T ar

* Utility/Company Names: CENTRAL MAINE POWER COMPANY * Report/Project Type: Select

Report/Project Year: 2012 Comments: ANNUAL CREDIT AND COLLECTION REPOR

* Title Of Filing: 2012 Credit and Collection Report

Characters remaining: 217

ATTACH DOCUMENT

SUBMIT BACK

ANNUAL ACCIDENT REPORTING (CHAPTER
ANNUAL CREDIT AND COLLECTION REPOR
ANNUAL REPORT-USF FUNDS PURSUANT T
ANNUAL REPORTS FOR UTILITIES-AREP
ANNUAL TELECOMMUNICATIONS EQUIPM
BHE SQI REPORTS-SQIB
CMP SQI REPORTS-SQIC
COMPETITIVE ELECTRICITY PROVIDER REP
CONFIDENTIAL PROJECT/REPORTING TYPE
DSM REPORTS (CHAPTER 380)-DSMR
E-911 ANNUAL REPORTS-AR91
E911 DATA REQUESTS E911

You must attach your saved report on this screen.

Report/Project Submission - Windows Internet Explorer provided by IE8 Policy Ver.8 - State of Maine

http://oit-isa1uatppt.som.w2k.state.me.us/CQM.Custom.WebUI/ReportProjectSubmission/ReportProjectSubmissionExternal.aspx

McAfee

Search the web (Babylon)

File Edit View Favorites Tools Help

Home MetaFrame Pre... CAD Case File CQM CQM Report/Proje...

Maine.gov Agencies | Online Services | Help Page Tools GO State Search: GO

OFFICE OF THE
Maine Public
Utilities Commission
STATE OF MAINE

Welcome Smith, John

Home

Report/Project Submission

SUBMIT BACK

Report/Project Submission

* Utility/Industry Type: Electric * Utility/Industry Subtype: Transmission and Distribution Utilities (T ar

* Utility/Company Names: CENTRAL MAINE POWER COMPANY * Report/Project Type: ANNUAL CREDIT AND COLLECTION REPOR

Report/Project Year: 2012 Comments:

* Title Of Filing: 2012 Credit and Collection Report

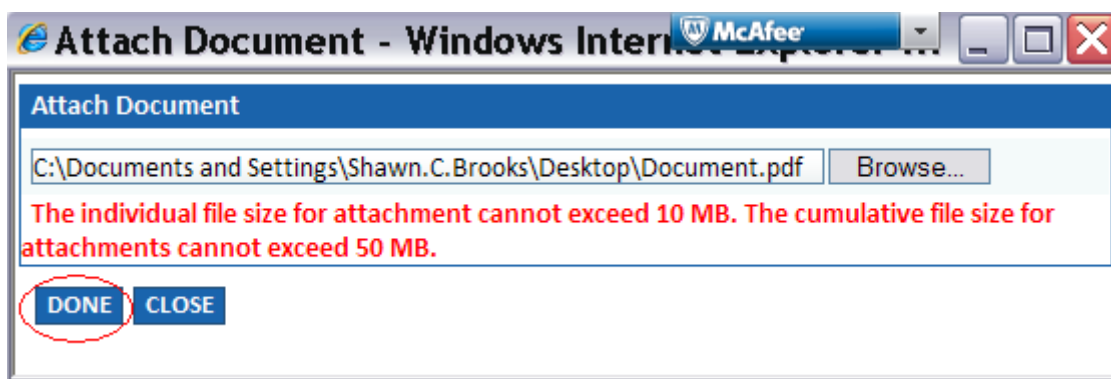
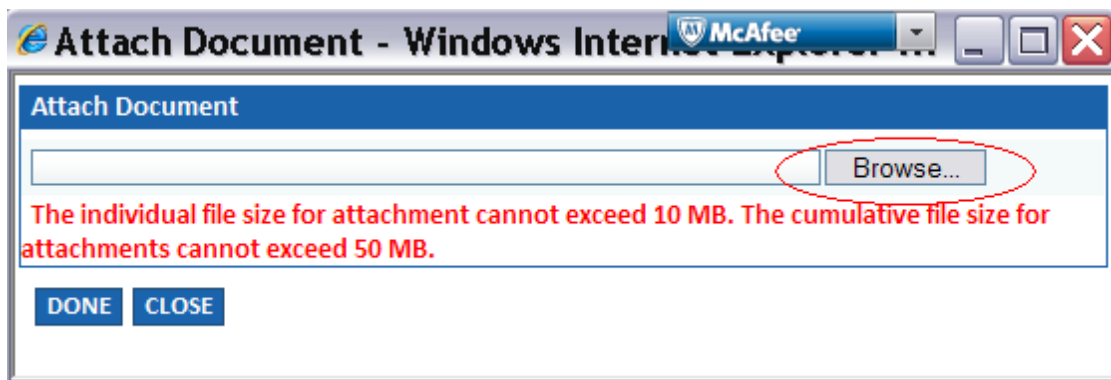
Characters remaining: 217

ATTACH DOCUMENT

SUBMIT BACK

Characters remaining: 250

After clicking Attach Document, the following pop up window will appear. By clicking Browse, you will be allowed to search the documents on your computer for the saved Annual Credit and Collection Form. Once you have located the form and clicked open, you will click Done on the Attach Document Window.



Once your attached form is showing in the grid on the screen, click Submit.

Report/Project Submission - Windows Internet Explorer provided by IE8 Policy Ver.8 - State of Maine

http://oit-isa1uatppt.som.w2k.state.me.us/CQM.Custom.WebUI/ReportProjectSubmission/ReportProjectSubmissionExternal.aspx

File Edit View Favorites Tools Help

Maine.gov Agencies | Online Services | Help Page Tools GO State Search: GO

OFFICE OF THE
Maine Public Utilities Commission
 STATE OF MAINE

Welcome Smith, John

Home

> Annual Report File
 > CAD System
 > Case File
 > Comment on Case
 > Data Requests/Responses
 > Manage Favorites
 > Manage Subscriptions
 > Project/Report Files
 > Tariff File
 > Update Contact Information

Report/Project Submission

SUBMIT BACK

Report/Project Submission

* Utility/Industry Type: Electric
 * Utility/Company Names: CENTRAL MAINE POWER COMPANY
 Report/Project Year: 2012
 * Title Of Filing: 2012 Credit and Collection Report
 Characters remaining: 217

* Utility/Industry Subtype: Transmission and Distribution Utilities (Tariff)
 * Report/Project Type: ANNUAL CREDIT AND COLLECTION REPORT
 Comments:
 Characters remaining: 250

ATTACH DOCUMENT

#	File Name	Size	
1	Document.pdf	3.01 MB	X

SUBMIT BACK

Once you click Submit, you will get the following confirmation message.

Submission Result - Windows Internet Explorer provided by IE8 Policy Ver.8 - State of Maine

http://oit-isa1uatppt.som.w2k.state.me.us/CQM.Custom.WebUI/ReportProjectSubmission/ReportProjectSubmissionResult.aspx

File Edit View Favorites Tools Help

Maine.gov Agencies | Online Services | Help Page Tools GO State Search: GO

OFFICE OF THE
Maine Public Utilities Commission
 STATE OF MAINE

Welcome Smith, John

Home

> Annual Report File
 > CAD System
 > Case File
 > Comment on Case
 > Data Requests/Responses
 > Manage Favorites
 > Manage Subscriptions
 > Project/Report Files
 > Tariff File
 > Update Contact Information

Submission Result

Report/Project Submission Message

BACK

The Report/Project has been submitted successfully. Tracking Number generated is:CADA-2013-00003.

BACK