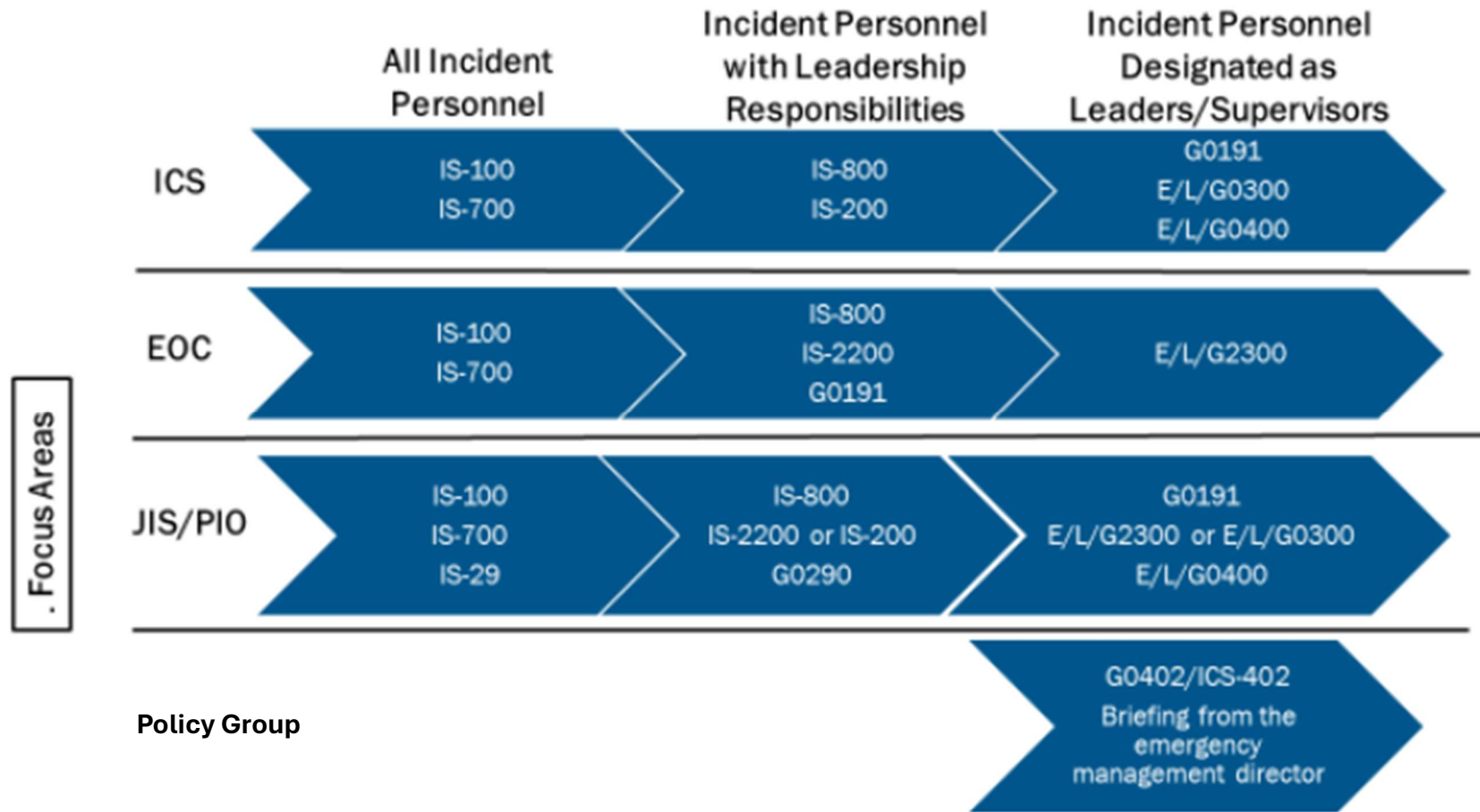




# Maine Emergency Management Agency NIMS Compliance Training Requirements





## Maine Emergency Management Agency NIMS Compliance Training Requirements

### ICS Focus Area

ICS personnel may also take EOC courses, based on AHJ plans, risk, or specific areas of interest.

Courses → Incident Positions ↓	IS-100	IS-700	IS-800	IS-200	G 0191	E/L/G 0300	E/L/G 0400	Position-specific PTB training
All incident personnel supporting ICS	X	X						
ICS personnel with leadership responsibilities	X	X	X	X				
ICS personnel with leadership responsibilities preparing for additional responsibility	X	X	X	X	X	X		
ICS personnel in leadership/supervisory roles	X	X	X	X	X	X	X	
IMT unit, strike team, resource team, or task force leaders preparing for complex incidents	X	X	X	X	X	X		X
IMT command, section, branch, division, or group leaders preparing for complex incidents	X	X	X	X	X	X	X	X



## Maine Emergency Management Agency NIMS Compliance Training Requirements

### EOC Focus Area

EOC personnel may also take ICS courses, based on AHJ risk or specific areas of interest.

Courses → Incident Positions ↓	IS-100	IS-700	IS-800	IS-2200	G 0191	E/L/G2300	EMI Integrated Emergency Management Course	Emergency Management Professional Program (EMPP)
All incident personnel supporting EOCs	X	X						
EOC personnel with leadership responsibilities	X	X	X	X	X			
EOC personnel in leadership/supervisory roles	X	X	X	X	X	X		
Jurisdictional emergency managers, EOC directors, senior EOC staff	X	X	X	X	X	X	X	X



## Maine Emergency Management Agency NIMS Compliance Training Requirements

### PIO Focus Area

Advanced and master PIO courses are available for ICS and EOC PIOs.

Courses → Incident Positions ↓	IS- 100	IS- 700	IS- 29	IS- 800	IS- 2200	IS- 200	G 0290	G 0191	E/L/G 0300	E/L/G 2300	E/L/ G 0400	E 0388	EMI IEMC	E/L 0952	O- 0305
All PIO incident personnel	X	X	X												
EOC PIOs with leadership responsibilities	X	X	X	X	X		X								
ICS PIOs with leadership responsibilities	X	X	X	X		X	X								
EOC PIOs in leadership/ supervisory roles	X	X	X	X	X		X	X		X					
ICS PIOs in leadership/ supervisory roles	X	X	X	X		X	X	X	X		X				
EOC PIOs for complex incidents	X	X	X	X	X		X	X		X		X	X		
ICS PIOs for complex incidents	X	X	X	X		X	X	X	X		X			X	X



## Maine Emergency Management Agency NIMS Compliance Training Requirements

### Policy Group Focus Area

Advanced courses are available for MAC Group leaders seeking additional, advanced training.

Courses → Incident Positions ↓	Briefing from emergency management director	G0402/ICS- 403	G0191	IS- 100	IS- 700	IS- 800	IS-200 or IS-2200	EMI IEMC
MAC Group/Policy Group members/senior officials	X	X						
MAC Group/Policy Group members/senior officials that want additional training based on jurisdictional risk or specific interest	X	X	X	X	X	X	X	X