

State of Maine Pedestrian Crash History 2013-2017



State of Maine Bicycle Crash History 2013-2017

Prepared by:

**Maine Department of Transportation
Bureau of Maintenance and Operations
Traffic Engineering Division
Crash Records Section
16 State House Station
Augusta, Maine 04333-0016**

STATE OF MAINE

HIGHWAY PEDESTRIAN CRASHES

2013 - 2017

I. PREFACE i

II. PEDESTRIAN CRASH TABLES AND CHARTS 2013-2017

Crashes Summarized by:

County	1-4
Severity	5-6
Rural/Urban Designation	7
Month	8
Day of Week	9
Time of Day	10
Age Groups	11
Age Groups by Gender	12
Apparent Physical Condition	13
Contributing Factors	14
Vehicle Type	15
Light Conditions	16
Weather Conditions	17
Road Surface Conditions	18

STATE OF MAINE

STATEWIDE PEDESTRIAN CRASHES

2013 - 2017

Preface

This publication is a statistical review of reported motor vehicle crashes that involved pedestrians in Maine during the five-year study period 2013- 2017. The statistics are compiled from crash reports submitted to the Department of Transportation by the Traffic Division, Department of Public Safety. The Traffic Division receives all police uniform crash reports Form 13:20 A, from state, county and local police agencies.

The enclosed charts, graphs, listings and summaries were produced using the Department of Transportation's Computerized Crash Records System. Except for adjustments to locations and crash-type information for accuracy, no attempt has been made to modify the raw data received from the reporting agencies. However, because crash scenes are often dangerous and chaotic, some inaccuracies in data collection are possible.

A comparison of this report with other summaries of crashes and fatalities may also reveal inconsistencies due to changes in crash classification, late submittals, and differing reporting criteria.

The Department of Transportation and the Department of Public Safety wish to express our sincere thank you to all law enforcement agencies and officers for the work they do on crash investigations. Without their dedication, this report would not be possible.

A link to this publication can be found on the maine.gov website at:

<https://www1.maine.gov/mdot/safety/crash-data/>

We welcome your comments and suggestions on this report at:

Maine Department of Transportation
Bureau of Maintenance and Operations
Traffic Engineering Division
Crash Records Section
16 State House Station
Augusta, ME 04333-0016

Tel: 207-624-3616

Fax: 207-624-3101

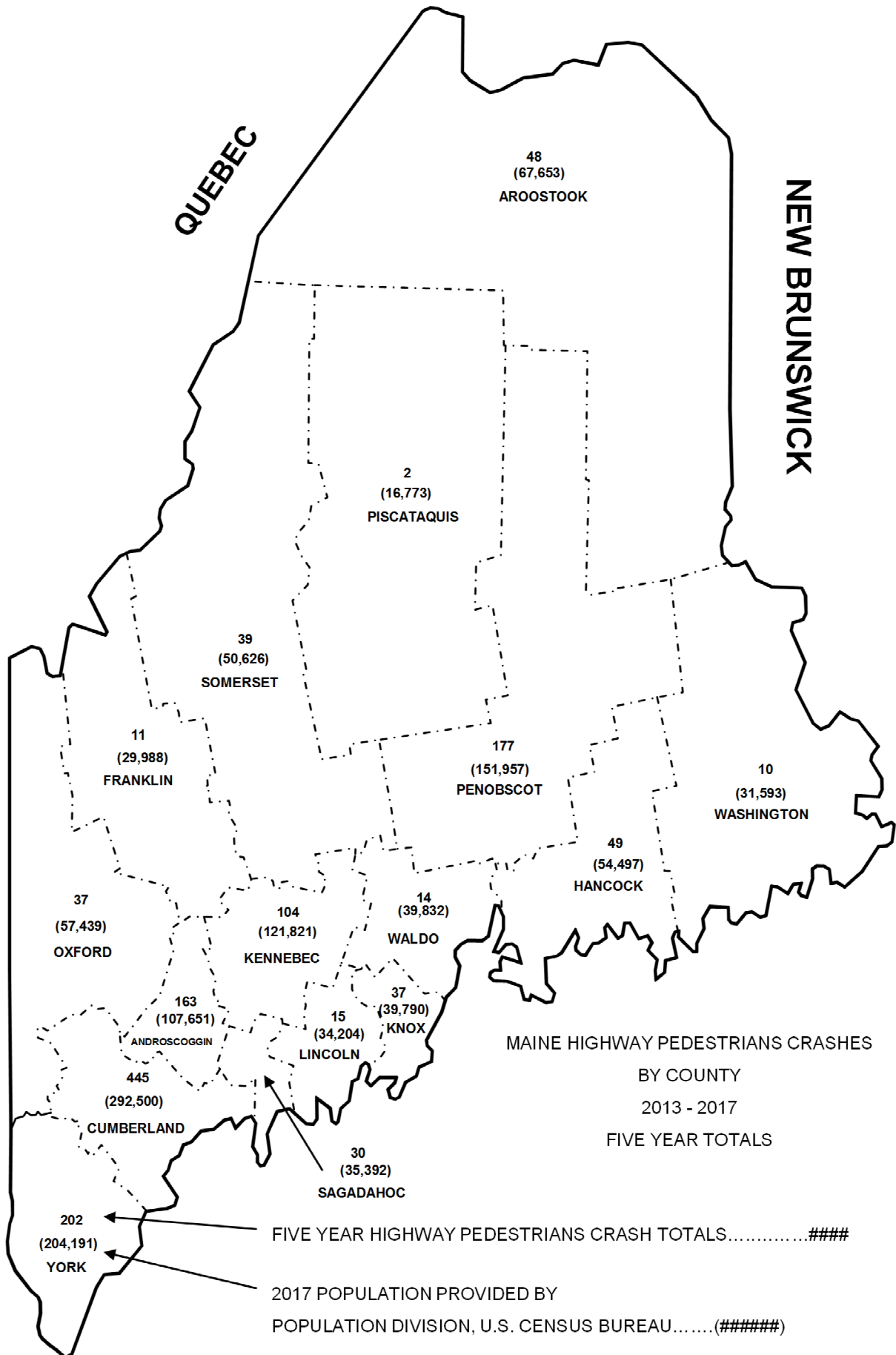


NEW HAMPSHIRE



QUEBEC

NEW BRUNSWICK



MAINE HIGHWAY PEDESTRIANS CRASHES
BY COUNTY
2013 - 2017
FIVE YEAR TOTALS

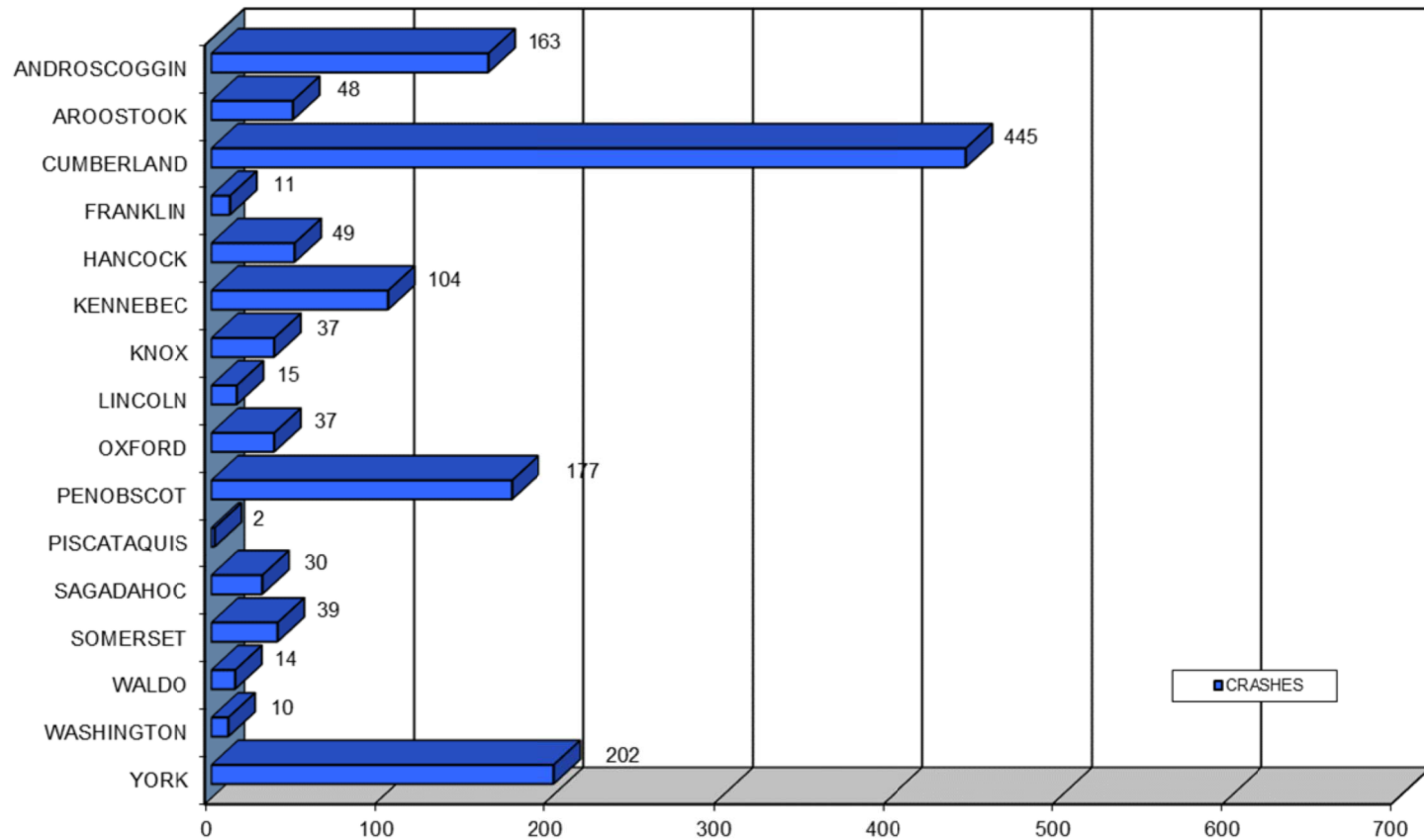
FIVE YEAR HIGHWAY PEDESTRIANS CRASH TOTALS.....####

2017 POPULATION PROVIDED BY
POPULATION DIVISION, U.S. CENSUS BUREAU.....(#####)

MAINE HIGHWAY PEDESTRIAN CRASHES

BY COUNTY

2013 - 2017



MAINE HIGHWAY PEDESTRIAN CRASH SEVERITY BY COUNTY

2013 - 2017

COUNTY	INJURY TYPE	2013	2014	2015	2016	2017	TOTAL CRASHES	PERCENT OF TOTAL
ANDROSCOGGIN Percent Personal Injury 94.48%	FATAL (K)	1	1	3	2	3	10	0.72%
	INCAPACITATING (A)	2	3	6	8	6	25	1.81%
	NON-INCAPACITATING (B)	8	10	9	4	12	43	3.11%
	POSSIBLE INJURY (C)	14	17	12	14	19	76	5.50%
	PROPERTY DAMAGE ONLY (PDO)	3	1	2	0	3	9	0.65%
	COUNTY SUBTOTAL	28	32	32	28	43	163	11.79%
AROOSTOOK Percent Personal Injury 91.67%	FATAL (K)	0	0	0	1	0	1	0.07%
	INCAPACITATING (A)	3	2	1	1	4	11	0.80%
	NON-INCAPACITATING (B)	8	3	3	0	3	17	1.23%
	POSSIBLE INJURY (C)	4	2	3	4	2	15	1.08%
	PROPERTY DAMAGE ONLY (PDO)	0	2	2	0	0	4	0.29%
	COUNTY SUBTOTAL	15	9	9	6	9	48	3.47%
CUMBERLAND Percent Personal Injury 96.40%	FATAL (K)	1	1	2	5	6	15	1.08%
	INCAPACITATING (A)	9	19	14	17	19	78	5.64%
	NON-INCAPACITATING (B)	22	27	25	28	19	121	8.75%
	POSSIBLE INJURY (C)	42	44	50	42	37	215	15.55%
	PROPERTY DAMAGE ONLY (PDO)	2	2	5	2	5	16	1.16%
	COUNTY SUBTOTAL	76	93	96	94	86	445	32.18%
FRANKLIN Percent Personal Injury 100.00%	FATAL (K)	0	0	0	1	0	1	0.07%
	INCAPACITATING (A)	0	2	0	0	0	2	0.14%
	NON-INCAPACITATING (B)	0	0	1	0	2	3	0.22%
	POSSIBLE INJURY (C)	2	0	1	0	2	5	0.36%
	PROPERTY DAMAGE ONLY (PDO)	0	0	0	0	0	0	0.00%
	COUNTY SUBTOTAL	2	2	2	1	4	11	0.80%
HANCOCK Percent Personal Injury 95.92%	FATAL (K)	0	1	3	0	1	5	0.36%
	INCAPACITATING (A)	2	1	2	3	1	9	0.65%
	NON-INCAPACITATING (B)	6	5	4	1	3	19	1.37%
	POSSIBLE INJURY (C)	3	3	3	4	1	14	1.01%
	PROPERTY DAMAGE ONLY (PDO)	0	0	1	1	0	2	0.14%
	COUNTY SUBTOTAL	11	10	13	9	6	49	3.54%
KENNEBEC Percent Personal Injury 88.46%	FATAL (K)	0	0	1	1	1	3	0.22%
	INCAPACITATING (A)	3	3	2	1	3	12	0.87%
	NON-INCAPACITATING (B)	2	6	5	2	5	20	1.45%
	POSSIBLE INJURY (C)	7	15	17	10	8	57	4.12%
	PROPERTY DAMAGE ONLY (PDO)	2	2	4	3	1	12	0.87%
	COUNTY SUBTOTAL	14	26	29	17	18	104	7.52%
KNOX Percent Personal Injury 91.89%	FATAL (K)	2	0	1	0	1	4	0.29%
	INCAPACITATING (A)	1	3	2	1	2	9	0.65%
	NON-INCAPACITATING (B)	2	3	1	0	1	7	0.51%
	POSSIBLE INJURY (C)	4	4	4	2	0	14	1.01%
	PROPERTY DAMAGE ONLY (PDO)	0	0	0	0	3	3	0.22%
	COUNTY SUBTOTAL	9	10	8	3	7	37	2.68%
LINCOLN Percent Personal Injury 93.33%	FATAL (K)	0	0	0	0	0	0	0.00%
	INCAPACITATING (A)	1	1	0	2	0	4	0.29%
	NON-INCAPACITATING (B)	1	1	0	1	2	5	0.36%
	POSSIBLE INJURY (C)	2	1	1	0	1	5	0.36%
	PROPERTY DAMAGE ONLY (PDO)	0	0	0	0	1	1	0.07%
	COUNTY SUBTOTAL	4	3	1	3	4	15	1.08%

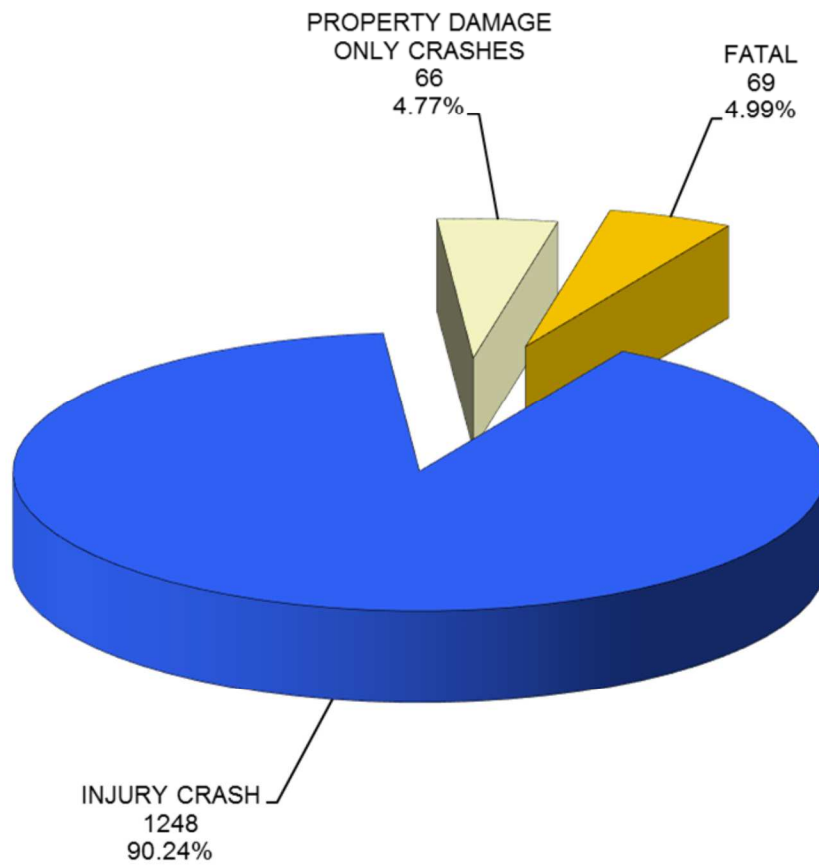


COUNTY	INJURY TYPE	2013	2014	2015	2016	2017	TOTAL CRA SHES	PERCENT OF TOTAL
OXFORD Percent Personal Injury 100.00%	FATAL (K)	0	1	0	1	1	3	0.22%
	INCAPACITATING (A)	0	2	2	1	1	6	0.43%
	NON-INCAPACITATING (B)	3	1	3	0	5	12	0.87%
	POSSIBLE INJURY (C)	3	5	2	4	2	16	1.16%
	PROPERTY DAMAGE ONLY (PDO)	0	0	0	0	0	0	0.00%
	COUNTY SUBTOTAL	6	9	7	6	9	37	2.68%
PENOBSCOT Percent Personal Injury 98.87%	FATAL (K)	3	3	3	1	1	11	0.80%
	INCAPACITATING (A)	7	8	6	7	8	36	2.60%
	NON-INCAPACITATING (B)	12	4	6	10	6	38	2.75%
	POSSIBLE INJURY (C)	15	16	15	29	15	90	6.51%
	PROPERTY DAMAGE ONLY (PDO)	0	0	1	1	0	2	0.14%
	COUNTY SUBTOTAL	37	31	31	48	30	177	12.80%
FISCATQUIS Percent Personal Injury 100.00%	FATAL (K)	0	0	0	0	0	0	0.00%
	INCAPACITATING (A)	0	0	0	0	1	1	0.07%
	NON-INCAPACITATING (B)	0	1	0	0	0	1	0.07%
	POSSIBLE INJURY (C)	0	0	0	0	0	0	0.00%
	PROPERTY DAMAGE ONLY (PDO)	0	0	0	0	0	0	0.00%
	COUNTY SUBTOTAL	0	1	0	0	1	2	0.14%
SAGadahoc Percent Personal Injury 96.67%	FATAL (K)	0	0	0	1	0	1	0.07%
	INCAPACITATING (A)	1	2	1	0	1	5	0.36%
	NON-INCAPACITATING (B)	6	2	5	0	4	17	1.23%
	POSSIBLE INJURY (C)	1	0	1	2	2	6	0.43%
	PROPERTY DAMAGE ONLY (PDO)	0	0	0	0	1	1	0.07%
	COUNTY SUBTOTAL	8	4	7	3	8	30	2.17%
SOMERSET Percent Personal Injury 87.18%	FATAL (K)	1	0	2	0	1	4	0.29%
	INCAPACITATING (A)	2	2	2	1	0	7	0.51%
	NON-INCAPACITATING (B)	2	3	0	2	1	8	0.58%
	POSSIBLE INJURY (C)	3	3	4	2	3	15	1.08%
	PROPERTY DAMAGE ONLY (PDO)	1	0	1	2	1	5	0.36%
	COUNTY SUBTOTAL	9	8	9	7	6	39	2.82%
WALDO Percent Personal Injury 100.00%	FATAL (K)	0	0	0	0	0	0	0.00%
	INCAPACITATING (A)	0	0	0	1	1	2	0.14%
	NON-INCAPACITATING (B)	1	1	0	0	1	3	0.22%
	POSSIBLE INJURY (C)	3	2	3	1	0	9	0.65%
	PROPERTY DAMAGE ONLY (PDO)	0	0	0	0	0	0	0.00%
	COUNTY SUBTOTAL	4	3	3	2	2	14	1.01%
WASHINGTON Percent Personal Injury 100.00%	FATAL (K)	1	0	1	1	1	4	0.29%
	INCAPACITATING (A)	1	0	0	1	0	2	0.14%
	NON-INCAPACITATING (B)	0	1	1	0	1	3	0.22%
	POSSIBLE INJURY (C)	0	0	0	0	1	1	0.07%
	PROPERTY DAMAGE ONLY (PDO)	0	0	0	0	0	0	0.00%
	COUNTY SUBTOTAL	2	1	2	2	3	10	0.72%
YORK Percent Personal Injury 94.55%	FATAL (K)	1	1	2	2	1	7	0.51%
	INCAPACITATING (A)	4	11	6	3	6	30	2.17%
	NON-INCAPACITATING (B)	16	16	13	13	12	70	5.06%
	POSSIBLE INJURY (C)	8	17	19	18	22	84	6.07%
	PROPERTY DAMAGE ONLY (PDO)	2	0	3	1	5	11	0.80%
	COUNTY SUBTOTAL	31	45	43	37	46	202	14.61%
COUNTY GRAND TOTAL Percent Personal Injury 95.23%	FATAL (K)	10	8	18	16	17	69	4.99%
	INCAPACITATING (A)	36	59	44	47	53	239	17.28%
	NON-INCAPACITATING (B)	89	84	76	61	77	387	27.98%
	POSSIBLE INJURY (C)	111	129	135	132	115	622	44.97%
	PROPERTY DAMAGE ONLY (PDO)	10	7	19	10	20	66	4.77%
	GRAND TOTAL	256	287	292	266	282	1,383	100.00%

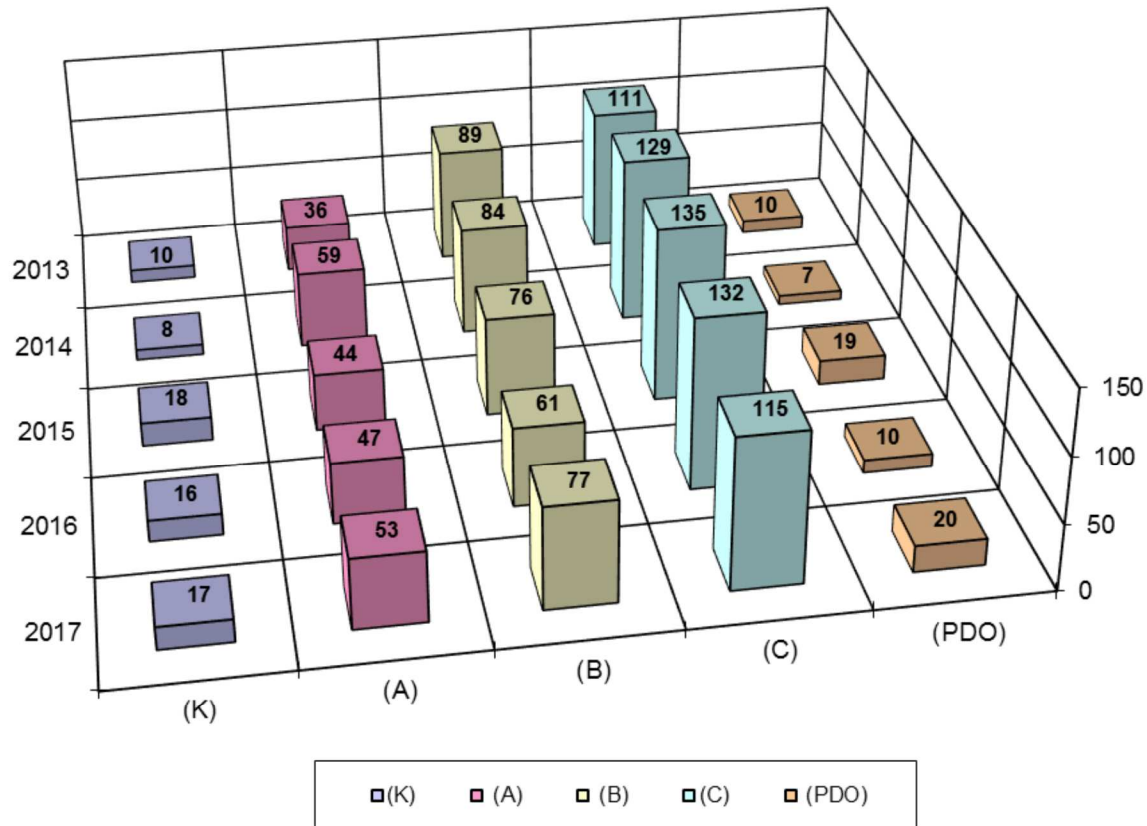


MAINE HIGHWAY PEDESTRIAN CRASHES 2013 - 2017

1,383 Total Pedestrian Crashes



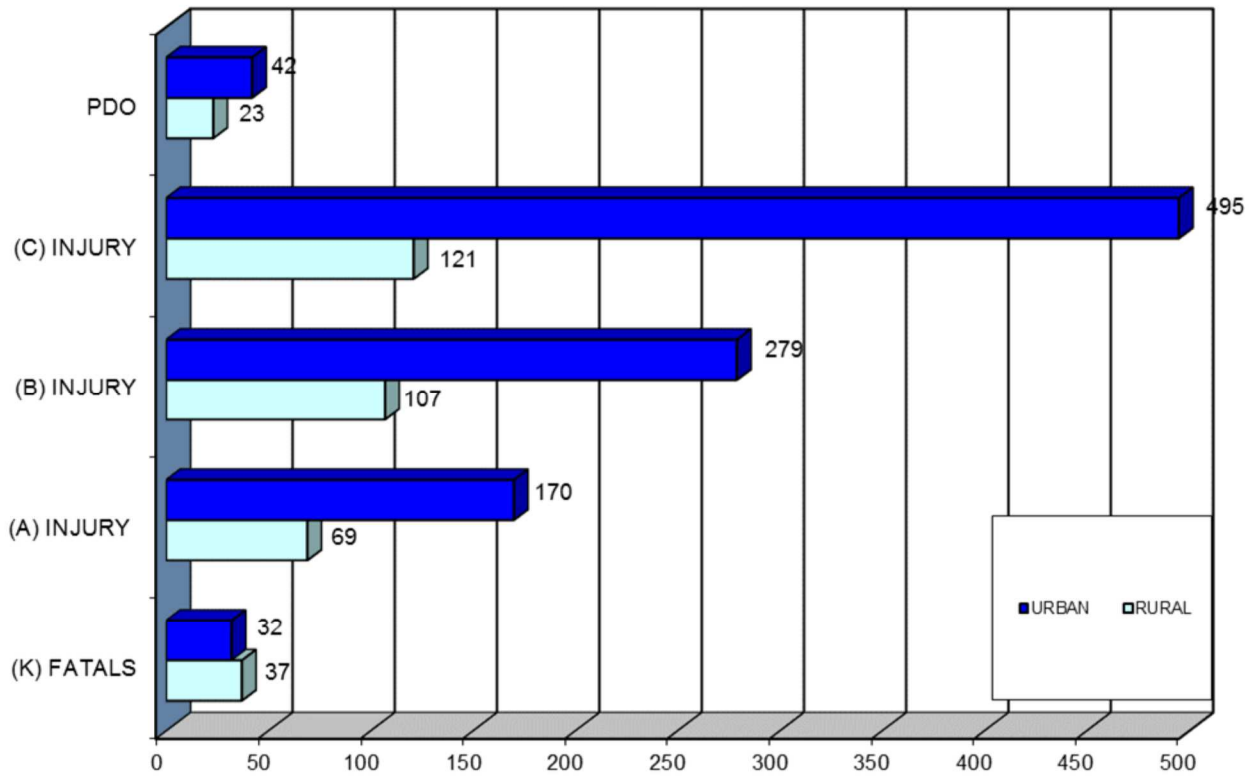
MAINE HIGHWAY PEDESTRIAN CRASH SEVERITY BY YEAR 2013 - 2017



YEAR	FATAL CRASH (K)	INCAPACITATING INJURY (A)	NON INCAPACITATING INJURY (B)	POSSIBLE INJURY (C)	PROPERTY DAMAGE ONLY (PDO)	TOTAL CRASHES
2013	10	36	89	111	10	256
2014	8	59	84	129	7	287
2015	18	44	76	135	19	292
2016	16	47	61	132	10	266
2017	17	53	77	115	20	282
TOTAL	69	239	387	622	66	1,383
PERCENT	4.99%	PERCENT INJURY CRASHES = 90.24%			4.77%	100.00%



MAINE HIGHWAY PEDESTRIAN CRASH SEVERITY BY RURAL URBAN DESIGNATION 2013 - 2017



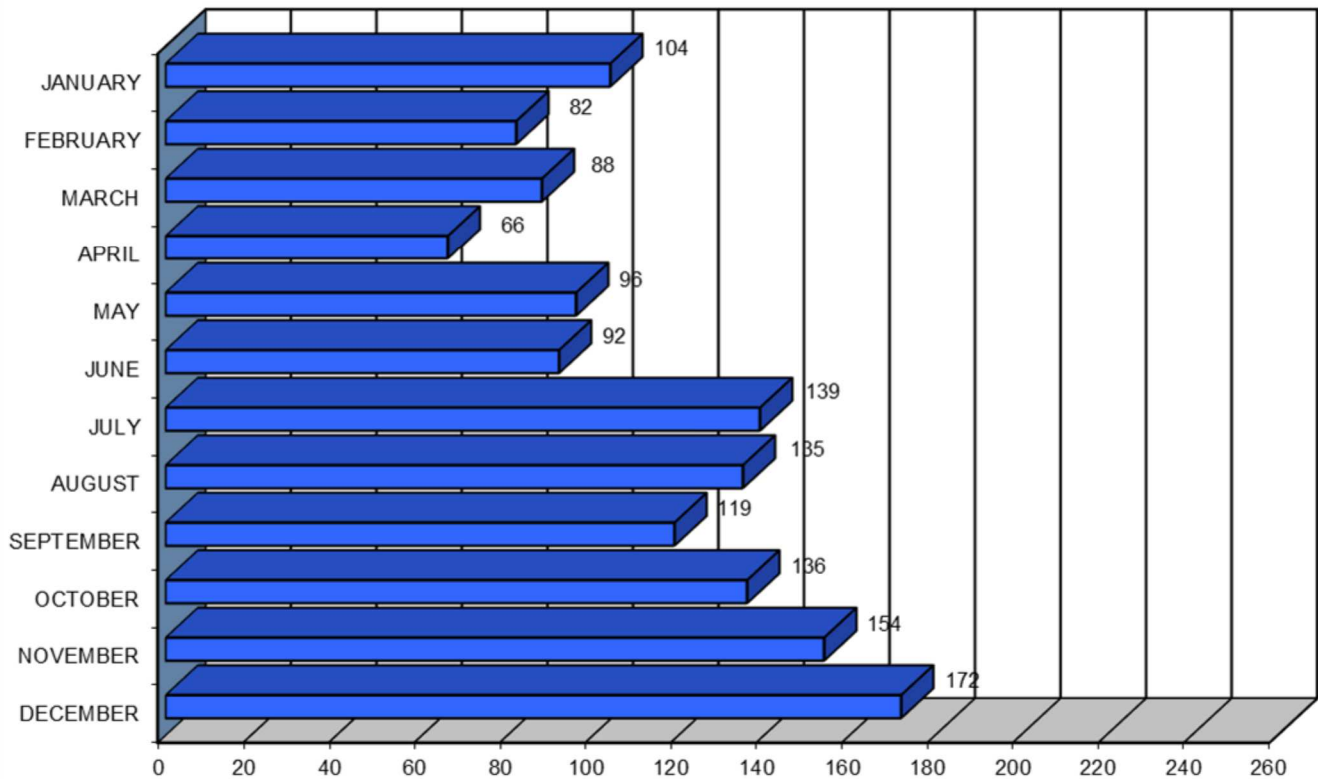
RURAL URBAN DESIGNATION	FATAL CRASHES (K)	INCAPACITATING INJURY (A)	NON INCAPACITATING INJURY (B)	POSSIBLE INJURY (C)	PROPERTY DAMAGE ONLY (PDO)	FIVE YEAR TOTAL
RURAL (1)	37	69	107	121	23	357
URBAN (2)	32	170	279	495	42	1018
UNKNOWN	0	0	1	6	1	8
TOTAL	69	239	387	622	66	1,383



MAINE HIGHWAY PEDESTRIAN CRASHES

BY MONTH

2013 - 2017



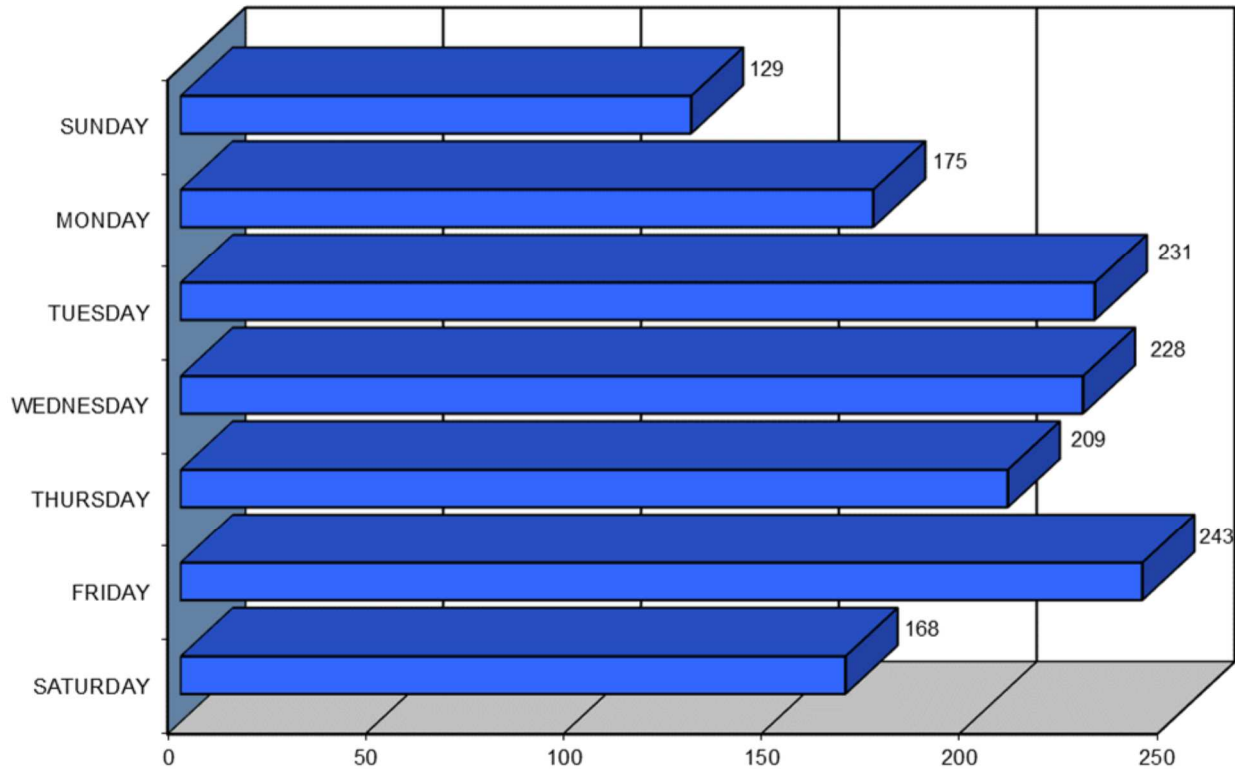
MONTH	2013	2014	2015	2016	2017	FIVE YEAR TOTAL	PERCENT OF TOTAL
JANUARY	16	19	21	21	27	104	7.52%
FEBRUARY	13	17	16	15	21	82	5.93%
MARCH	17	25	21	14	11	88	6.36%
APRIL	7	8	22	16	13	66	4.77%
MAY	19	17	16	17	27	96	6.94%
JUNE	20	19	16	25	12	92	6.65%
JULY	21	29	30	25	34	139	10.05%
AUGUST	32	30	20	30	23	135	9.76%
SEPTEMBER	23	21	25	22	28	119	8.60%
OCTOBER	27	28	26	23	32	136	9.83%
NOVEMBER	28	30	35	34	27	154	11.14%
DECEMBER	33	44	44	24	27	172	12.44%
TOTAL	256	287	292	266	282	1,383	100.00%



MAINE HIGHWAY PEDESTRIAN CRASHES

BY DAY OF THE WEEK

2013 - 2017



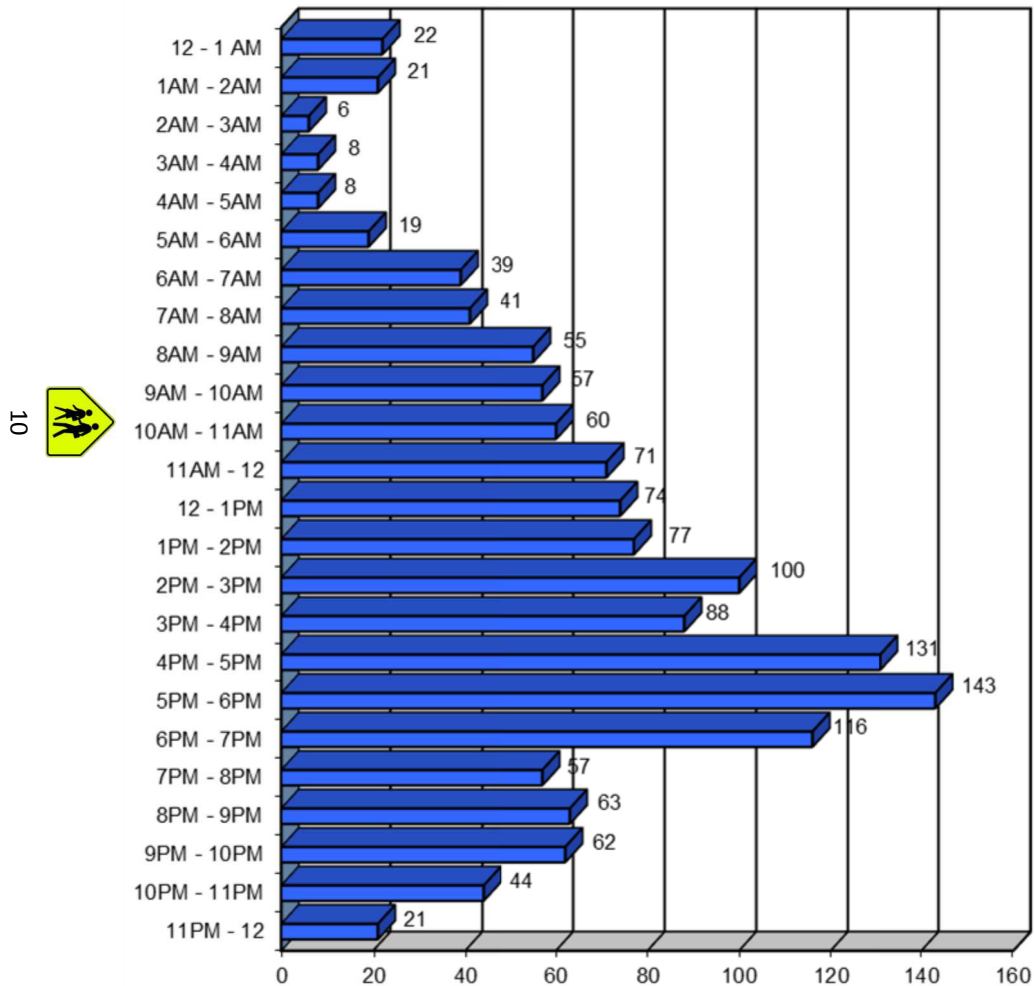
DAY OF THE WEEK	2013	2014	2015	2016	2017	FIVE YEAR TOTAL	PERCENT OF TOTAL
SUNDAY	22	29	26	23	29	129	9.33%
MONDAY	36	33	43	32	31	175	12.65%
TUESDAY	45	44	47	47	48	231	16.70%
WEDNESDAY	49	44	45	58	32	228	16.49%
THURSDAY	34	43	49	36	47	209	15.11%
FRIDAY	44	46	51	42	60	243	17.57%
SATURDAY	26	48	31	28	35	168	12.15%
TOTAL	256	287	292	266	282	1,383	100.00%



MAINE HIGHWAY PEDESTRIAN CRASHES

BY TIME OF DAY

2013 - 2017

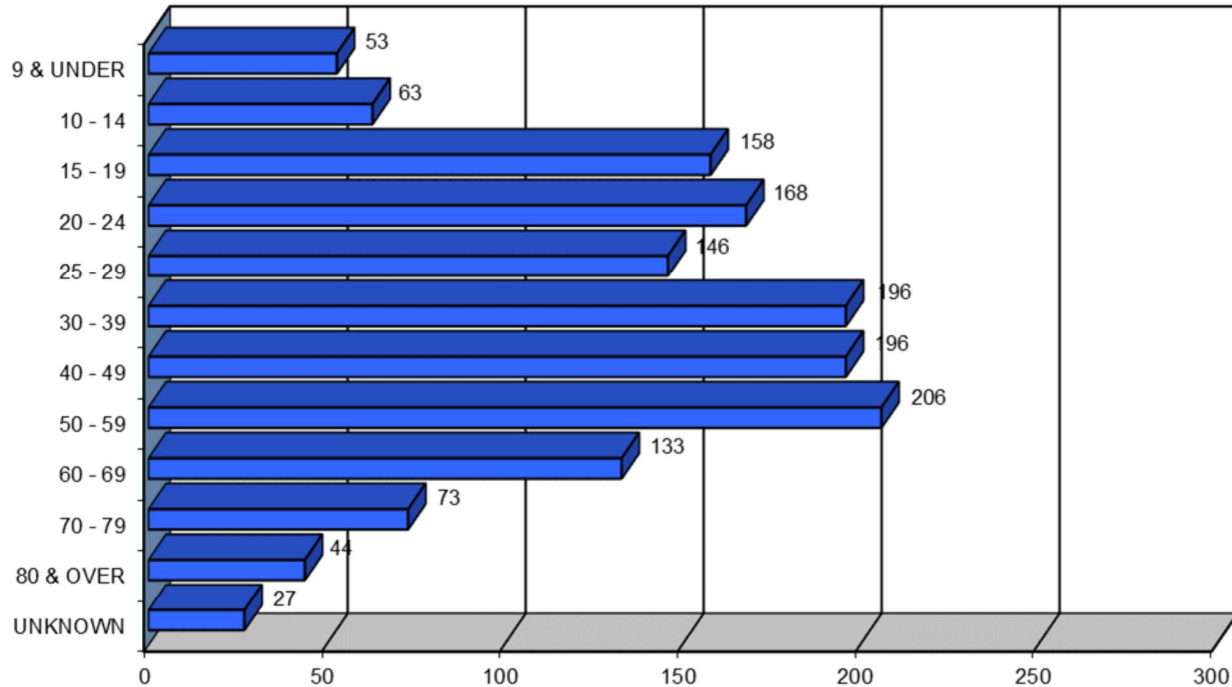


TIME OF DAY	2013	2014	2015	2016	2017	FIVE YEAR TOTAL
12 - 1 AM	3	4	5	5	5	22
1AM - 2AM	4	6	3	5	3	21
2AM - 3AM	0	1	0	2	3	6
3AM - 4AM	1	2	1	3	1	8
4AM - 5AM	2	2	1	1	2	8
5AM - 6AM	7	3	5	1	3	19
6AM - 7AM	9	10	5	10	5	39
7AM - 8AM	8	11	12	3	7	41
8AM - 9AM	13	11	11	16	4	55
9AM - 10AM	15	12	12	10	8	57
10AM - 11AM	13	9	11	14	13	60
11AM - 12	14	15	16	12	14	71
12 - 1PM	15	14	13	17	15	74
1PM - 2PM	19	11	15	18	14	77
2PM - 3PM	13	21	25	15	26	100
3PM - 4PM	25	17	17	15	14	88
4PM - 5PM	23	26	27	27	28	131
5PM - 6PM	20	36	32	25	30	143
6PM - 7PM	14	24	30	17	31	116
7PM - 8PM	11	16	13	7	10	57
8PM - 9PM	10	11	13	11	18	63
9PM - 10PM	8	12	12	11	19	62
10PM - 11PM	9	8	6	14	7	44
11PM - 12	0	5	7	7	2	21
TOTAL	256	287	292	266	282	1,383

PEDESTRIANS INVOLVED IN MAINE HIGHWAY CRASHES

BY AGE GROUP

2013 - 2017



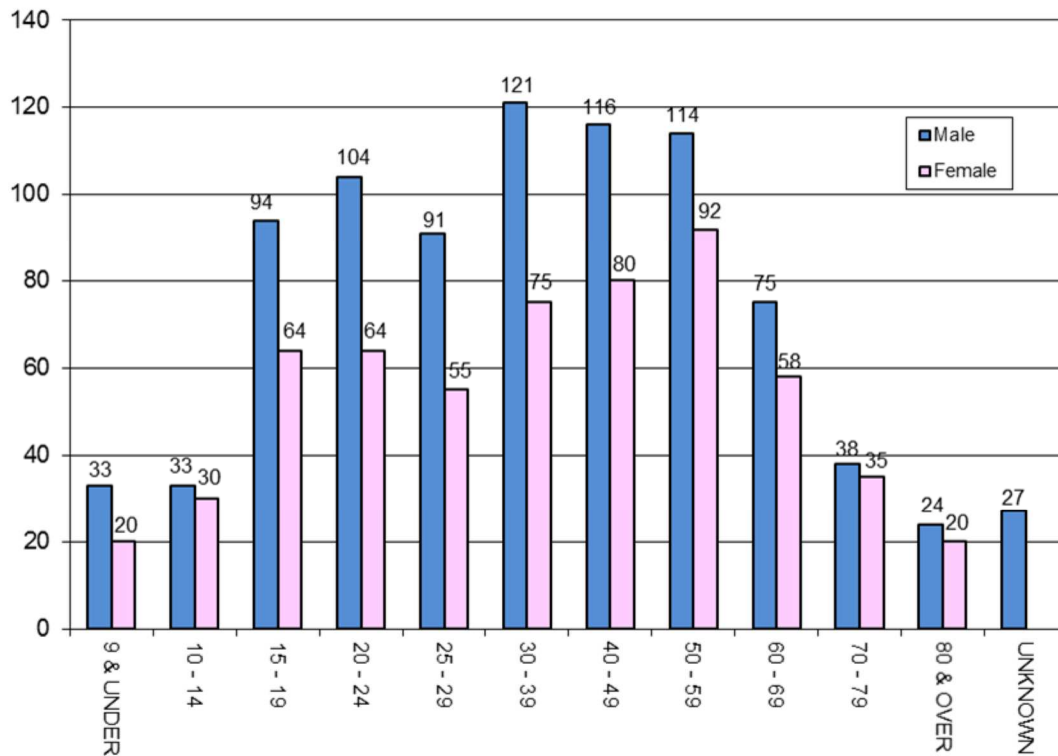
AGE GROUP OF PEDESTRIAN	2013	2014	2015	2016	2017	FIVE YEAR TOTAL	PERCENT OF TOTAL
9 & UNDER	14	13	11	9	6	53	3.62%
10 - 14	12	14	9	10	18	63	4.31%
15 - 19	28	36	34	26	34	158	10.80%
20 - 24	41	34	27	34	32	168	11.48%
25 - 29	26	30	31	31	28	146	9.98%
30 - 39	41	41	44	36	34	196	13.40%
40 - 49	32	34	40	53	37	196	13.40%
50 - 59	30	38	48	39	51	206	14.08%
60 - 69	17	31	39	18	28	133	9.09%
70 - 79	19	17	9	14	14	73	4.99%
80 & OVER	9	8	6	10	11	44	3.01%
UNKNOWN	6	2	7	3	9	27	1.85%
TOTAL	275	298	305	283	302	1,463	100.00%



PEDESTRIANS INVOLVED IN MAINE HIGHWAY CRASHES

BY AGE GROUP AND GENDER

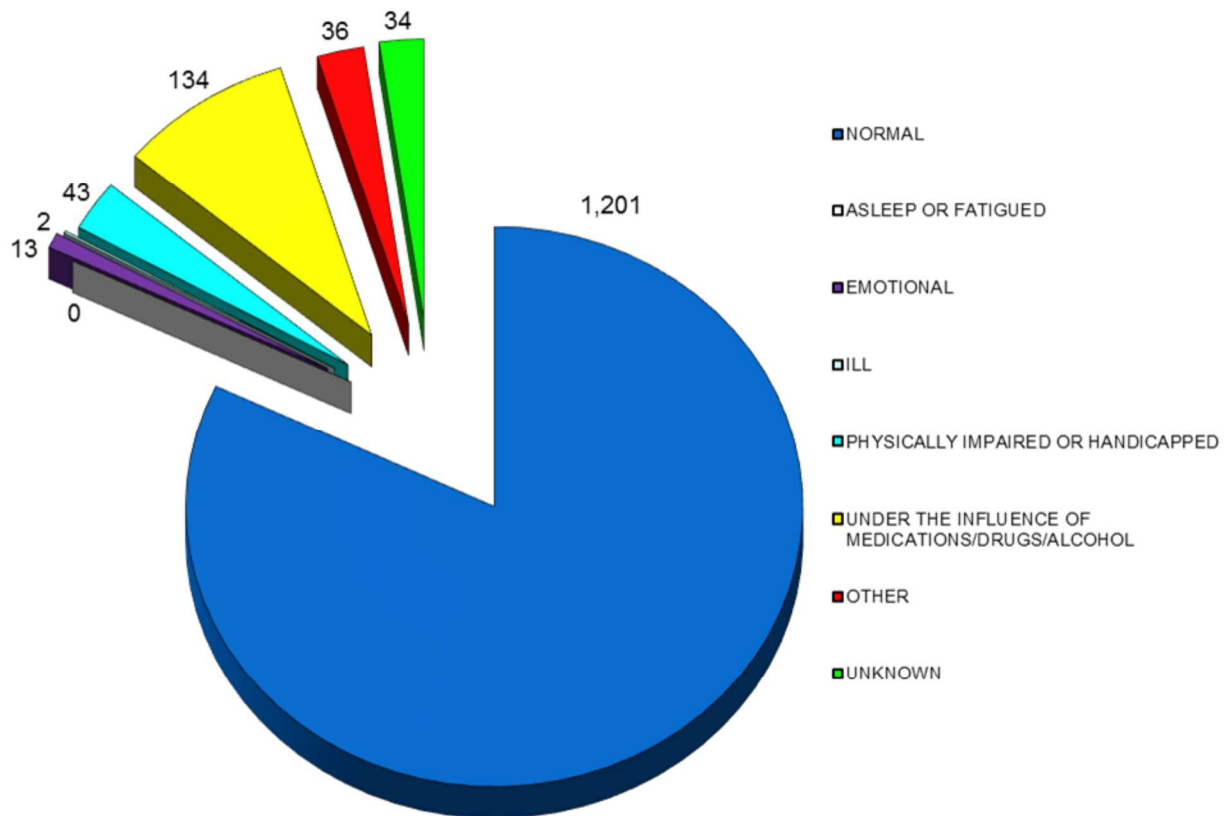
2013 - 2017



	2013		2014		2015		2016		2017		TOTALS			
AGE GROUP OF PEDESTRIAN BY GENDER	M	F	M	F	M	F	M	F	M	F	M	F	FIVE YEAR TOTAL	PERCENT OF TOTAL
9 & UNDER	10	4	8	5	7	4	5	4	3	3	33	20	53	3.62%
10 - 14	5	7	8	6	6	3	6	4	8	10	33	30	63	4.31%
15 - 19	16	12	14	22	23	11	17	9	24	10	94	64	158	10.80%
20 - 24	25	16	20	14	15	12	18	16	26	6	104	64	168	11.48%
25 - 29	16	10	20	10	19	12	17	14	19	9	91	55	146	9.98%
30 - 39	27	14	22	19	29	15	23	13	20	14	121	75	196	13.40%
40 - 49	26	6	18	16	22	18	26	27	24	13	116	80	196	13.40%
50 - 59	17	13	22	16	32	16	15	24	28	23	114	92	206	14.08%
60 - 69	13	4	16	15	20	19	12	6	14	14	75	58	133	9.09%
70 - 79	8	11	11	6	6	3	5	9	8	6	38	35	73	4.99%
80 & OVER	3	6	4	4	4	2	4	6	9	2	24	20	44	3.01%
UNKNOWN	6		2		7		3		9		27		27	1.85%
TOTAL BY GENDER	166	103	163	133	183	115	148	132	183	110	843	593		
TOTAL	275		298		305		283		302		1,463		1,463	100.00%



MAINE HIGHWAY PEDESTRIAN CRASHES BY APPARENT PHYSICAL CONDITIONS 2013 - 2017



PEDESTRIAN PHYSICAL CONDITION	2013	2014	2015	2016	2017	FIVE YEAR TOTAL	PERCENT OF TOTAL
APPARENTLY NORMAL	226	256	257	221	241	1,201	82.09%
ASLEEP OR FATIGUED	0	0	0	0	0	0	0.00%
EMOTIONAL (depressed, angry, disturbed, etc.)	0	3	3	3	4	13	0.89%
ILL (sick)	0	0	1	1	0	2	0.14%
PHYSICALLY IMPAIRED OR HANDICAPPED	6	10	5	11	11	43	2.94%
UNDER THE INFLUENCE OF MEDICATIONS/DRUGS/ALCOHOL	29	24	22	31	28	134	9.16%
OTHER	7	3	10	7	9	36	2.46%
UNKNOWN	7	2	7	9	9	34	2.32%
TOTAL	275	298	305	283	302	1,463	100.00%



CONTRIBUTING FACTORS TO MAINE HIGHWAY PEDESTRIAN CRASHES

2013-2017

DRIVER ACTIONS (actions 1 & 2 combined)	2013	2014	2015	2016	2017	Totals
NO CONTRIBUTING ACTION	119	115	115	102	113	564
RAN OFF ROADWAY	3	2	8	3	4	20
FAILED TO YIELD RIGHT-OF-WAY	53	65	59	74	62	313
RAN RED LIGHT	0	1	0	1	0	2
RAN STOP SIGN	2	1	2	2	1	8
DISREGARDED OTHER TRAFFIC SIGN	5	1	2	2	0	10
DISREGARDED OTHER ROAD MARKINGS	1	4	4	3	3	15
EXCEEDED POSTED SPEED LIMIT	1	0	0	1	0	2
DROVE TOO FAST FOR CONDITIONS	4	6	4	2	1	17
IMPROPER TURN	2	3	0	2	5	12
IMPROPER BACKING	8	7	10	6	5	36
IMPROPER PASSING	1	0	1	4	0	6
WRONG WAY	0	0	1	0	0	1
FOLLOWED TOO CLOSELY	0	0	0	1	0	1
FAILED TO KEEP IN PROPER LANE	5	3	3	3	6	20
OPERATED MOTOR VEHICLE IN ERRATIC, RECKLESS, CARELESS, NEGLIGENT OR AGGRESSIVE MANNER	15	13	18	13	8	67
SWERVED OR AVOIDED DUE TO WIND, SLIPPERY SURFACE, MOTOR VEHICLE, OBJECT, NON-MOTORIST IN ROADWAY	6	1	3	2	2	14
OVER-CORRECTING/OVER-STEERING	0	4	2	0	1	7
OTHER CONTRIBUTING ACTION	13	23	21	18	20	95
UNKNOWN	18	17	16	16	9	76
TOTAL	256	266	269	255	240	1286
PEDESTRIAN ACTIONS						
CROSSING WITH SIGNAL	19	13	12	27	25	96
CROSSING AGAINST SIGNAL	21	16	13	25	13	88
CROSSING MARKED CROSSWALK (no signal)	41	69	53	57	62	282
CROSSING NO SIGNAL OR CROSSWALK	65	78	74	64	70	351
WALKING IN ROAD WITH TRAFFIC	22	21	20	13	19	95
WALKING IN ROAD AGAINST TRAFFIC	6	9	8	6	11	40
STANDING IN ROAD	14	10	21	12	13	70
EMERGING FROM BEHIND PARKED CAR	3	3	3	2	5	16
CHILD GETTING ON/OFF SCHOOL BUS	0	1	1	0	0	2
GETTING ON/OFF VEHICLE	3	0	5	4	5	17
PUSHING OR WORKING ON VEHICLE	1	1	0	1	2	5
WORKING IN ROAD	5	6	9	5	5	30
PLAYING IN ROAD	3	3	1	2	6	15
NOT IN ROAD	7	10	17	10	10	54
FOLLOWING TRAIL	2	0	0	0	0	2
WALKING ON SIDEWALK	15	11	7	9	6	48
WALKING ADJACENT TO ROADWAY	8	15	17	8	10	58
WALKING TO/FROM SCHOOL	0	1	0	0	1	2
OTHER PEDESTRIAN ACTION	33	29	37	33	34	166
TOTAL	268	296	298	278	297	1437
VEHICULAR FACTORS						
NONE	224	241	252	230	241	1188
BRAKES	0	1	1	1	1	4
EXHAUST SYSTEM	0	0	0	0	0	0
BODY, DOORS	0	1	1	1	1	4
STEERING	0	0	0	0	0	0
POWER TRAIN	1	1	0	1	0	3
SUSPENSION	0	0	0	0	0	0
TIRES	0	1	2	0	0	3
WHEELS	0	0	0	0	0	0
LIGHTS (head, signal, tail, brake)	1	2	0	0	1	4
WINDOWS/WINDSHIELD	2	1	1	1	1	6
MIRRORS	1	0	0	1	0	2
WIPERS	0	0	0	0	0	0
TRUCK COUPLING/TRAILER HITCH/SAFETY CHAINS	0	0	0	0	0	0
OTHER	6	4	6	3	2	21
TOTAL	235	252	263	238	247	1235



VEHICLES INVOLVED IN MAINE HIGHWAY PEDESTRIAN CRASHES 2013 - 2017

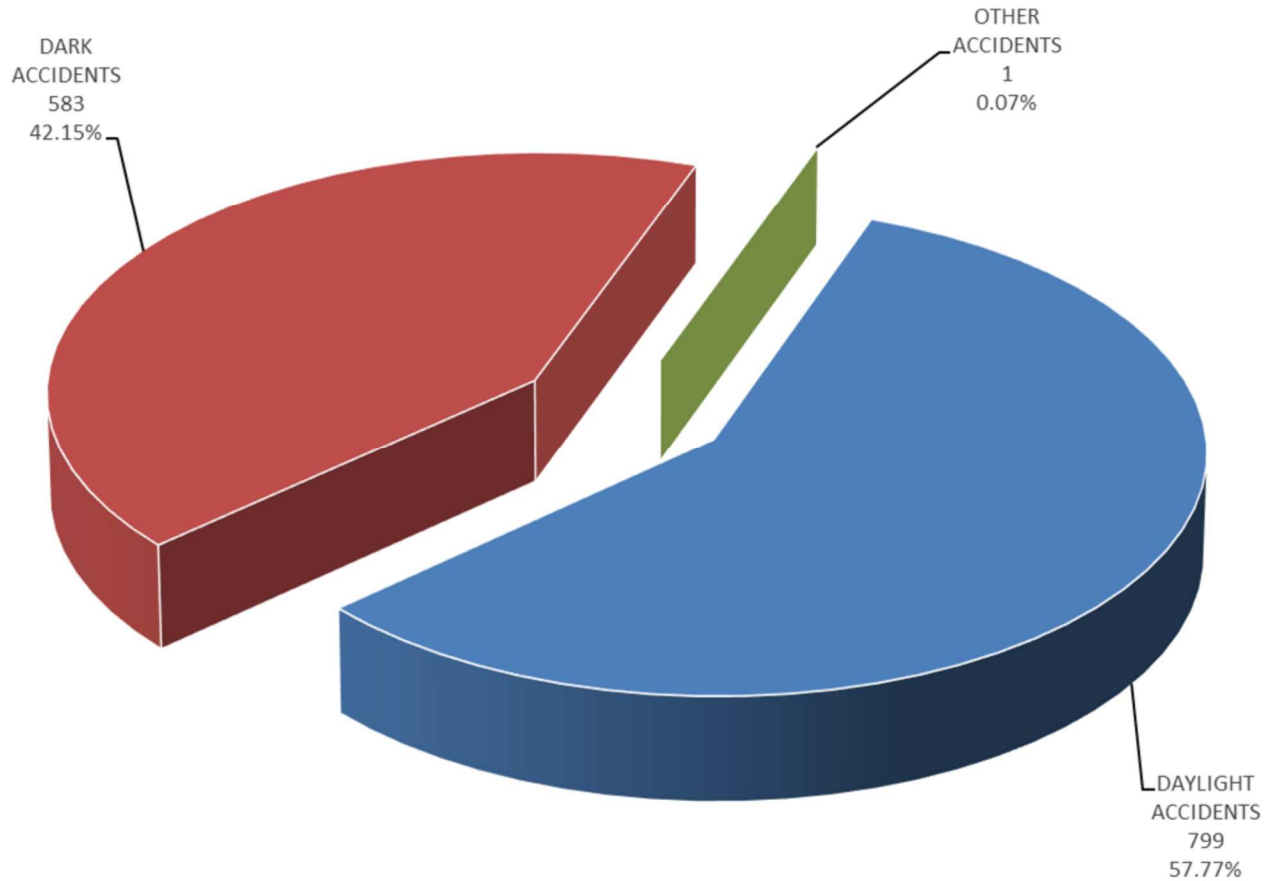
VEHICLE TYPE INVOLVED IN PEDESTRIAN CRASHES	2013	2014	2015	2016	2017	FIVE YEAR TOTAL
PASSENGER CAR	146	168	154	128	140	736
(SPORT) UTILITY VEHICLE	44	38	53	48	49	232
PASSENGER VAN	8	8	9	11	12	48
CARGO VAN (10k or less)	2	3	2	4	1	12
PICKUP TRUCK	36	39	51	48	48	222
MOTOR HOME	0	1	0	0	0	1
SCHOOL BUS	0	0	1	1	0	2
TRANSIT BUS	0	0	2	0	2	4
MOTOR COACH	0	1	0	0	0	1
OTHER BUS	0	0	0	0	1	1
MOTORCYCLE	1	3	1	4	3	12
MOPED	0	0	0	1	0	1
LOW SPEED VEHICLE	0	0	0	0	0	0
AUTOCYCLE	0	0	0	0	0	0
EXPERIMENTAL	0	0	0	0	0	0
OTHER LIGHT TRUCK (10,000 lbs or less)	0	2	0	0	0	2
MEDIUM /HEAVY TRUCKS (more than 10,000 lbs)	7	3	8	6	2	26
ATV (2,3,4-WHEEL)	0	1	0	0	2	3
SNOWMOBILE	0	0	0	0	0	0
PEDESTRIAN	275	298	305	283	302	1,463
BICYCLE	0	0	1	0	0	1
OTHER	18	10	6	3	16	53
TOTAL VEHICLES INVOLVED	537	575	593	537	578	2,820



MAINE HIGHWAY PEDESTRIAN CRASHES

BY LIGHT CONDITION

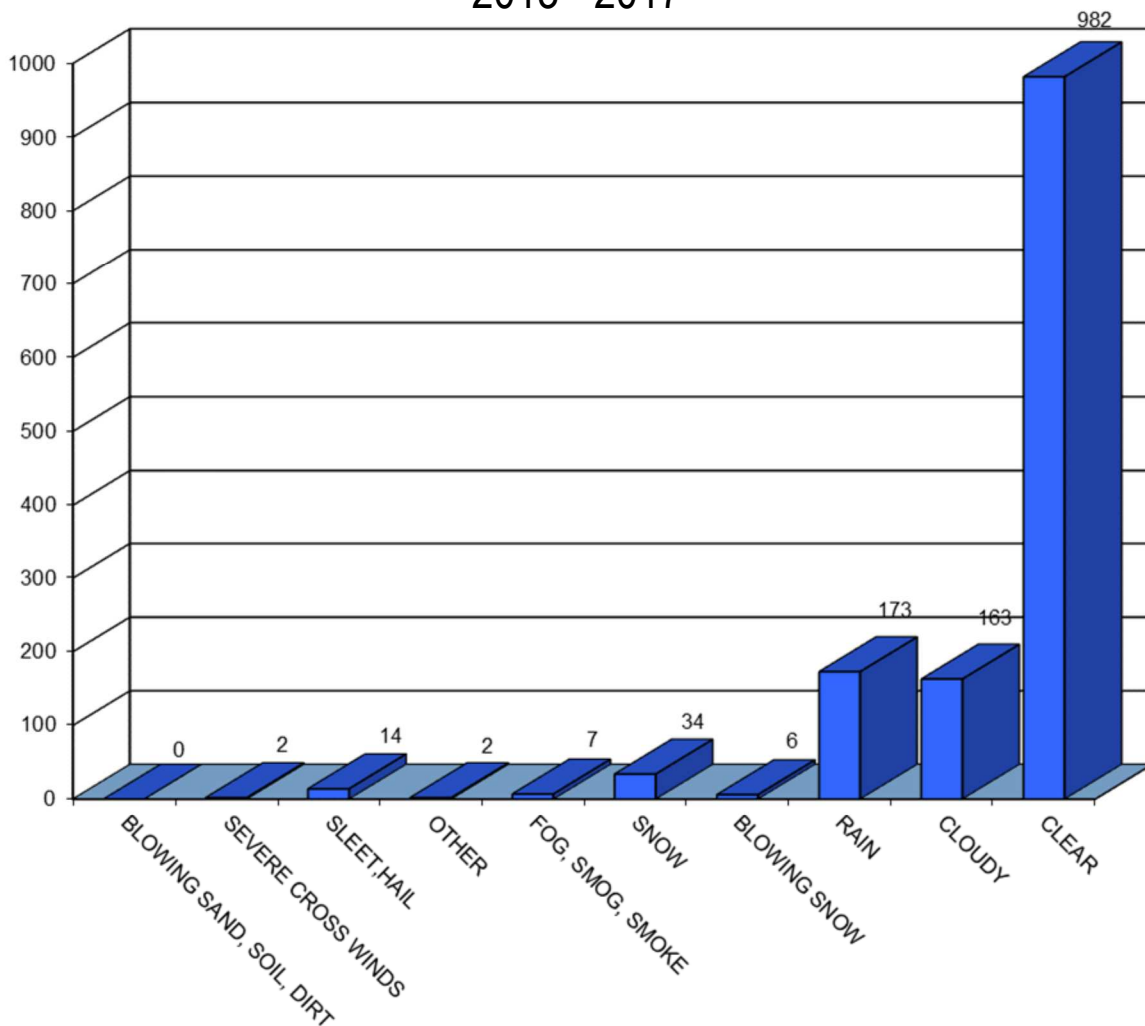
2013 - 2017



LIGHT CONDITION	2013	2014	2015	2016	2017	FIVE YEAR TOTAL	PERCENT OF TOTAL
DAYLIGHT	162	155	165	156	161	799	57.77%
DARK	94	131	127	110	121	583	42.15%
OTHER	0	1	0	0	0	1	0.07%
TOTAL	256	287	292	266	282	1,383	100.00%



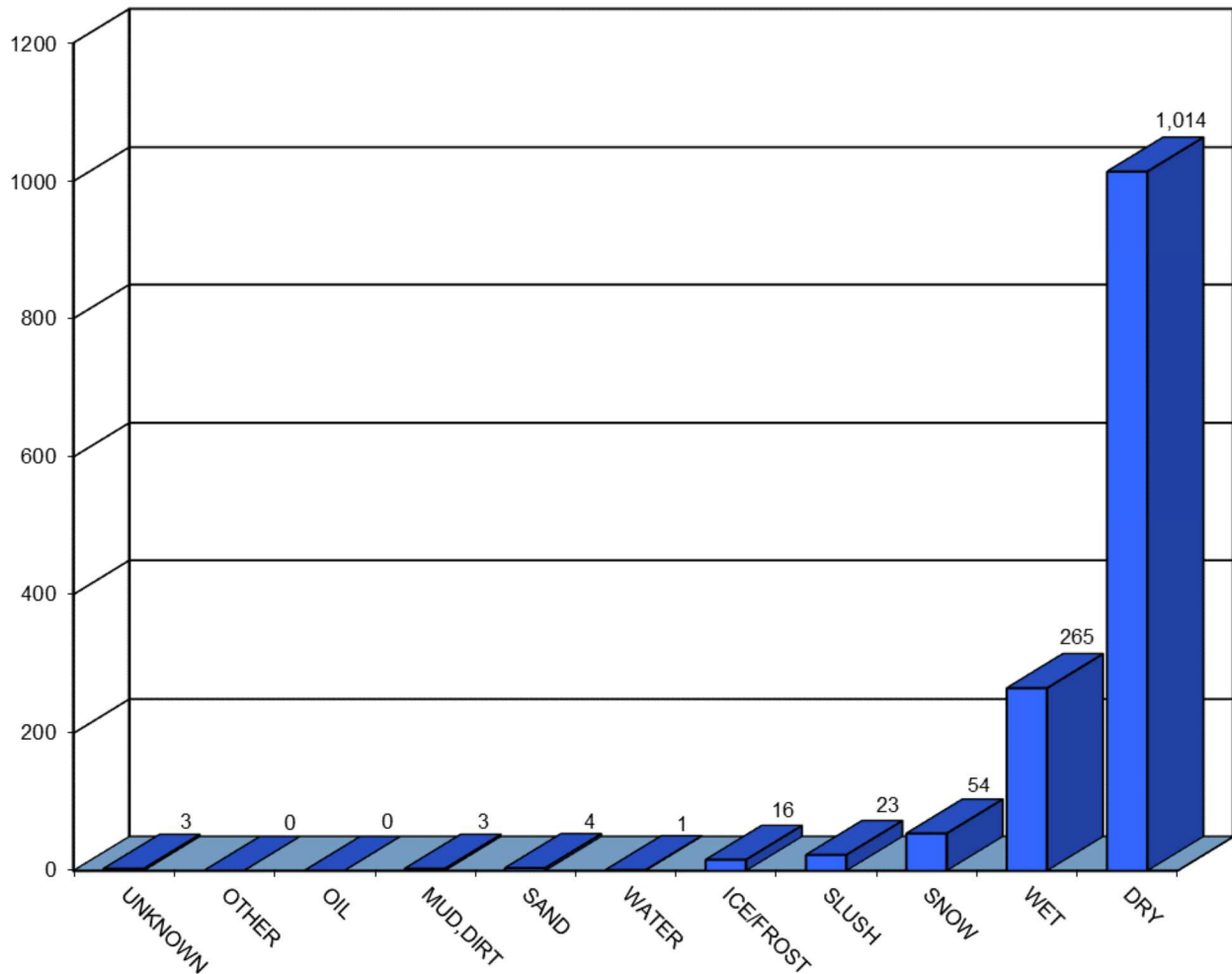
MAINE HIGHWAY PEDESTRIAN CRASHES BY WEATHER CONDITIONS 2013 - 2017



WEATHER CONDITIONS	2013	2014	2015	2016	2017	FIVE YEAR TOTAL
BLOWING SAND, SOIL, DIRT	0	0	0	0	0	0
SEVERE CROSS WINDS	1	0	0	0	1	2
SLEET,HAIL (freezing rain or drizzle)	5	4	1	2	2	14
OTHER	1	1	0	0	0	2
FOG,SMOG,SMOKE	0	0	4	1	2	7
SNOW	7	9	7	4	7	34
BLOWING SNOW	2	1	1	0	2	6
RAIN	30	42	29	38	34	173
CLOUDY	42	33	34	28	26	163
CLEAR	168	197	216	193	208	982
TOTAL	256	287	292	266	282	1,383



MAINE HIGHWAY PEDESTRIAN CRASHES BY ROAD SURFACE CONDITIONS 2013 - 2017



ROAD SURFACE CONDITIONS	2013	2014	2015	2016	2017	FIVE YEAR TOTAL
UNKNOWN	0	2	0	0	1	3
OTHER	0	0	0	0	0	0
OIL	0	0	0	0	0	0
MUD,DIRT	1	2	0	0	0	3
SAND	0	2	0	0	2	4
WATER (standing, moving)	0	0	0	1	0	1
ICE/FROST	2	4	4	2	4	16
SLUSH	8	4	4	2	5	23
SNOW	12	11	12	6	13	54
WET	48	61	53	54	49	265
DRY	185	201	219	201	208	1,014
TOTAL	256	287	292	266	282	1,383



STATE OF MAINE

HIGHWAY BICYCLE CRASHES

2013 - 2017

I. PREFACE i

II. BICYCLE CRASH TABLES AND CHARTS 2013-2017

Crashes Summarized by:

County	1-4
Severity	5-6
Rural/Urban Designation	7
Month	8
Day of Week	9
Time of Day	10
Age Groups	11
Age Groups by Gender	12
Apparent Physical Condition	13
Contributing Factors	14
Vehicle Type	15
Light Conditions	16
Weather Conditions	17
Road Surface Conditions	18

STATEWIDE BICYCLE CRASHES

2013 - 2017

Preface

This publication is a statistical review of reported motor vehicle crashes that involved bicycles in Maine during the five-year study period 2013- 2017. The statistics are compiled from crash reports submitted to the Department of Transportation by the Traffic Division, Department of Public Safety. The Traffic Division receives all police uniform crash reports Form 13:20 A, from state, county and local police agencies.

The enclosed charts, graphs, listings and summaries were produced using the Department of Transportation's Computerized Crash Records System. Except for adjustments to locations and crash-type information for accuracy, no attempt has been made to modify the raw data received from the reporting agencies. However, because crash scenes are often dangerous and chaotic, some inaccuracies in data collection are possible.

A comparison of this report with other summaries of crashes and fatalities may also reveal inconsistencies due to changes in crash classification, late submittals, and differing reporting criteria.

The Department of Transportation and the Department of Public Safety wish to express our sincere thank you to all law enforcement agencies and officers for the work they do on crash investigations. Without their dedication, this report would not be possible.

A link to this publication can be found on the maine.gov website at:

<https://www1.maine.gov/mdot/safety/crash-data/>

We welcome your comments and suggestions on this report at:

Maine Department of Transportation
Bureau of Maintenance and Operations
Traffic Engineering Division
Crash Records Section
16 State House Station
Augusta, ME 04333-0016

Tel: 207-624-3616

Fax: 207-624-3101

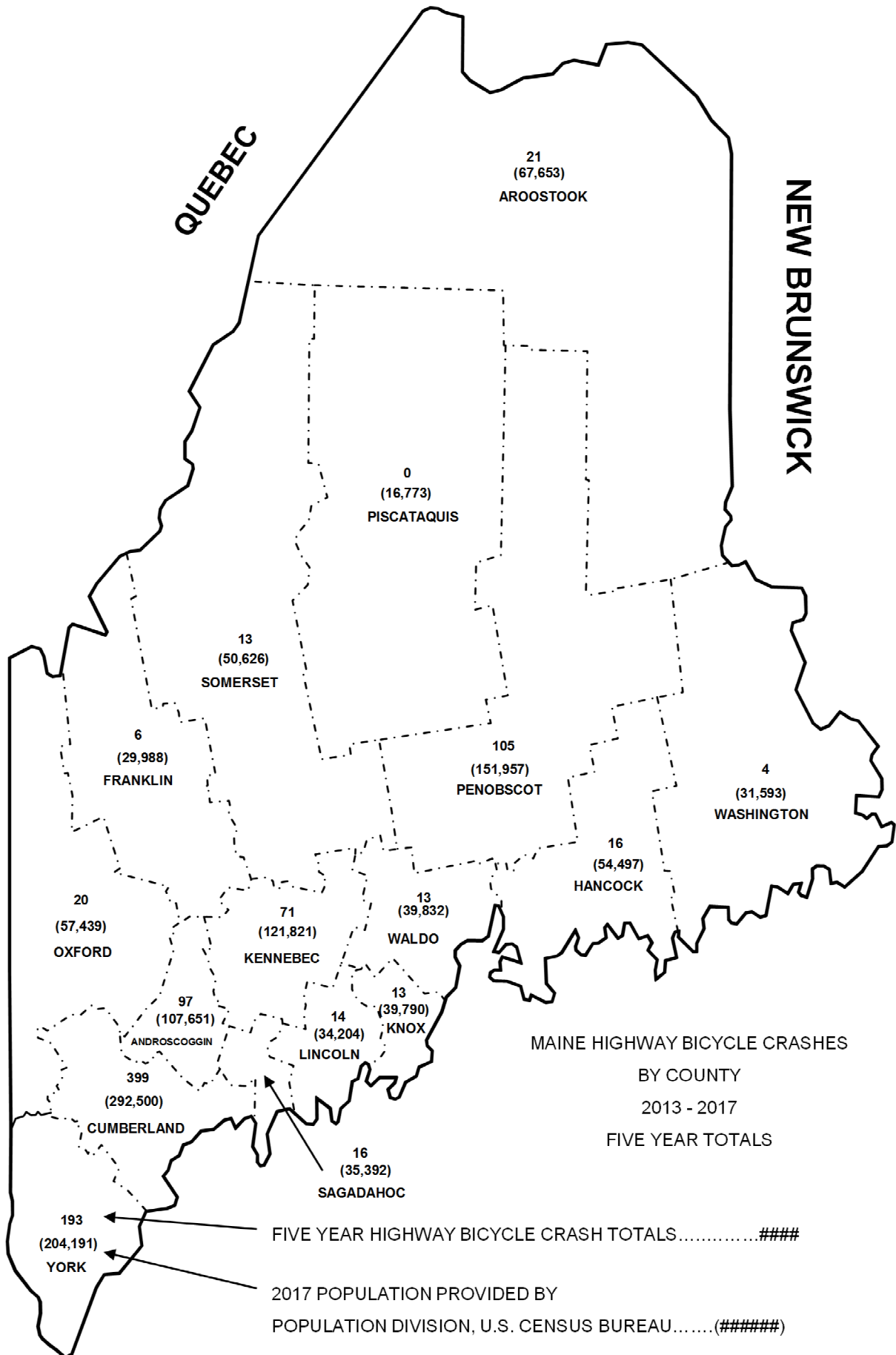


NEW HAMPSHIRE



QUEBEC

NEW BRUNSWICK

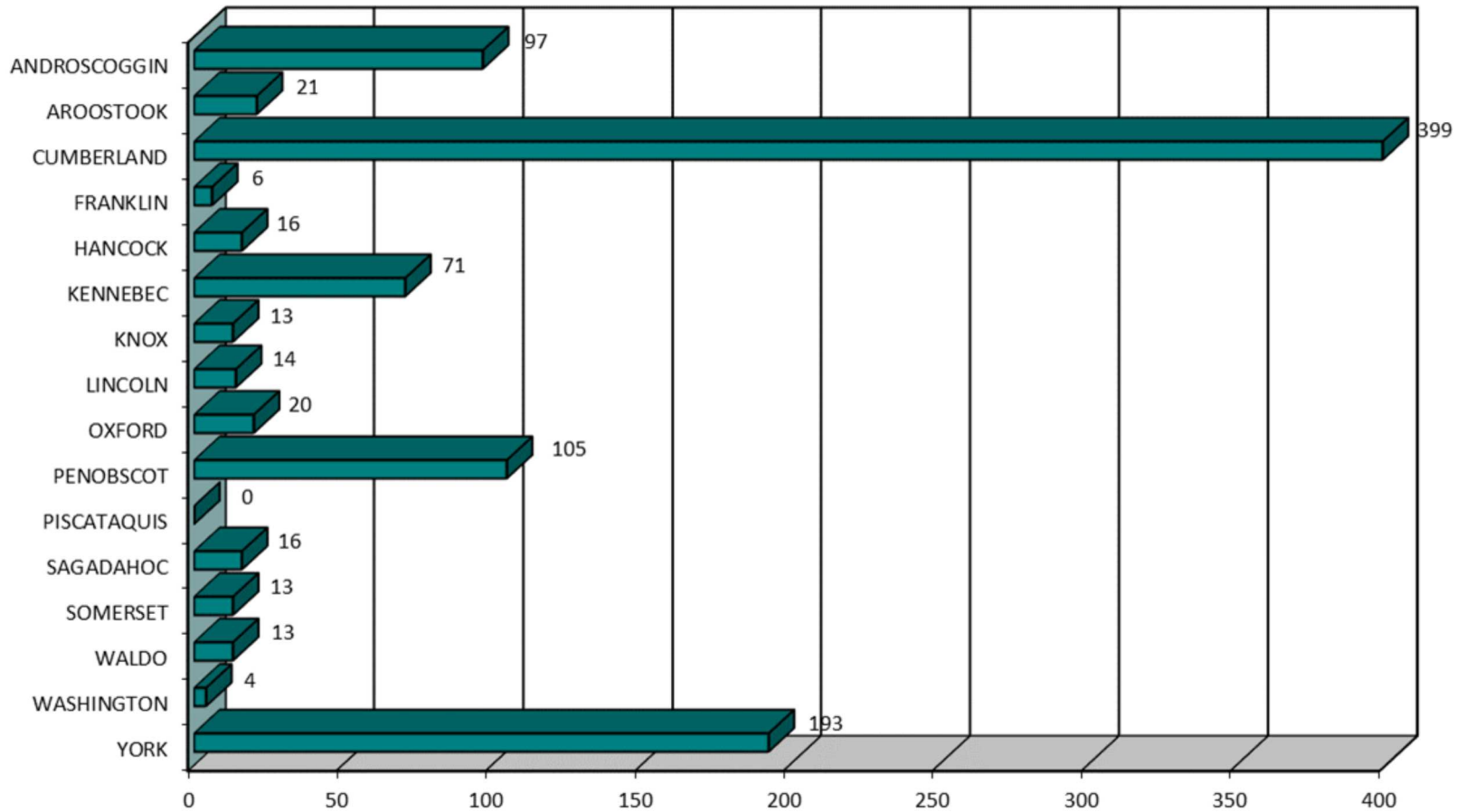


Produced by the Maine Department of Transportation

MAINE HIGHWAY BICYCLE CRASHES

BY COUNTY

2013 - 2017



MAINE HIGHWAY BICYCLE CRASH SEVERITY BY COUNTY 2013- 2017

COUNTY	INJURY TYPE	2013	2014	2015	2016	2017	TOTAL CRASHES	PERCENT OF TOTAL
ANDROSCOGGIN Percent Personal Injury 91.75%	FATAL (K)	0	0	0	1	0	1	0.10%
	INCAPACITATING (A)	1	1	2	4	2	10	1.00%
	NON-INCAPACITATING (B)	7	8	5	8	7	35	3.50%
	POSSIBLE INJURY (C)	5	10	7	10	11	43	4.30%
	PROPERTY DAMAGE ONLY (PDO)	1	4	2	1	0	8	0.80%
	COUNTY SUBTOTAL	14	23	16	24	20	97	9.69%
AROOSTOOK Percent Personal Injury 90.48%	FATAL (K)	0	0	0	0	0	0	0.00%
	INCAPACITATING (A)	1	0	1	0	0	2	0.20%
	NON-INCAPACITATING (B)	2	1	3	4	1	11	1.10%
	POSSIBLE INJURY (C)	1	2	1	1	1	6	0.60%
	PROPERTY DAMAGE ONLY (PDO)	0	0	1	0	1	2	0.20%
	COUNTY SUBTOTAL	4	3	6	5	3	21	2.10%
CUMBERLAND Percent Personal Injury 93.73%	FATAL (K)	0	0	0	1	0	1	0.10%
	INCAPACITATING (A)	6	9	6	5	7	33	3.30%
	NON-INCAPACITATING (B)	38	27	27	30	18	140	13.99%
	POSSIBLE INJURY (C)	47	39	39	36	35	196	19.58%
	PROPERTY DAMAGE ONLY (PDO)	7	5	5	8	4	29	2.90%
	COUNTY SUBTOTAL	98	80	77	80	64	399	39.86%
FRANKLIN Percent Personal Injury 83.33%	FATAL (K)	0	0	0	0	0	0	0.00%
	INCAPACITATING (A)	0	0	0	0	1	1	0.10%
	NON-INCAPACITATING (B)	0	1	0	1	0	2	0.20%
	POSSIBLE INJURY (C)	1	0	0	0	1	2	0.20%
	PROPERTY DAMAGE ONLY (PDO)	0	0	1	0	0	1	0.10%
	COUNTY SUBTOTAL	1	1	1	1	2	6	0.60%
HANCOCK Percent Personal Injury 100.00%	FATAL (K)	0	0	0	0	0	0	0.00%
	INCAPACITATING (A)	0	0	1	1	1	3	0.30%
	NON-INCAPACITATING (B)	0	1	1	2	2	6	0.60%
	POSSIBLE INJURY (C)	0	1	3	3	0	7	0.70%
	PROPERTY DAMAGE ONLY (PDO)	0	0	0	0	0	0	0.00%
	COUNTY SUBTOTAL	0	2	5	6	3	16	1.60%
KENNEBEC Percent Personal Injury 92.96%	FATAL (K)	1	0	0	1	0	2	0.20%
	INCAPACITATING (A)	1	3	0	3	0	7	0.70%
	NON-INCAPACITATING (B)	5	5	4	6	7	27	2.70%
	POSSIBLE INJURY (C)	1	7	6	7	9	30	3.00%
	PROPERTY DAMAGE ONLY (PDO)	2	0	1	2	0	5	0.50%
	COUNTY SUBTOTAL	10	15	11	19	16	71	7.09%
KNOX Percent Personal Injury 100.00%	FATAL (K)	0	0	0	0	0	0	0.00%
	INCAPACITATING (A)	1	1	0	0	2	4	0.40%
	NON-INCAPACITATING (B)	1	1	3	0	0	5	0.50%
	POSSIBLE INJURY (C)	1	2	0	1	0	4	0.40%
	PROPERTY DAMAGE ONLY (PDO)	0	0	0	0	0	0	0.00%
	COUNTY SUBTOTAL	3	4	3	1	2	13	1.30%
LINCOLN Percent Personal Injury 85.71%	FATAL (K)	0	2	0	0	0	2	0.20%
	INCAPACITATING (A)	0	0	0	0	1	1	0.10%
	NON-INCAPACITATING (B)	0	1	2	1	1	5	0.50%
	POSSIBLE INJURY (C)	0	3	0	1	0	4	0.40%
	PROPERTY DAMAGE ONLY (PDO)	1	1	0	0	0	2	0.20%
	COUNTY SUBTOTAL	1	7	2	2	2	14	1.40%

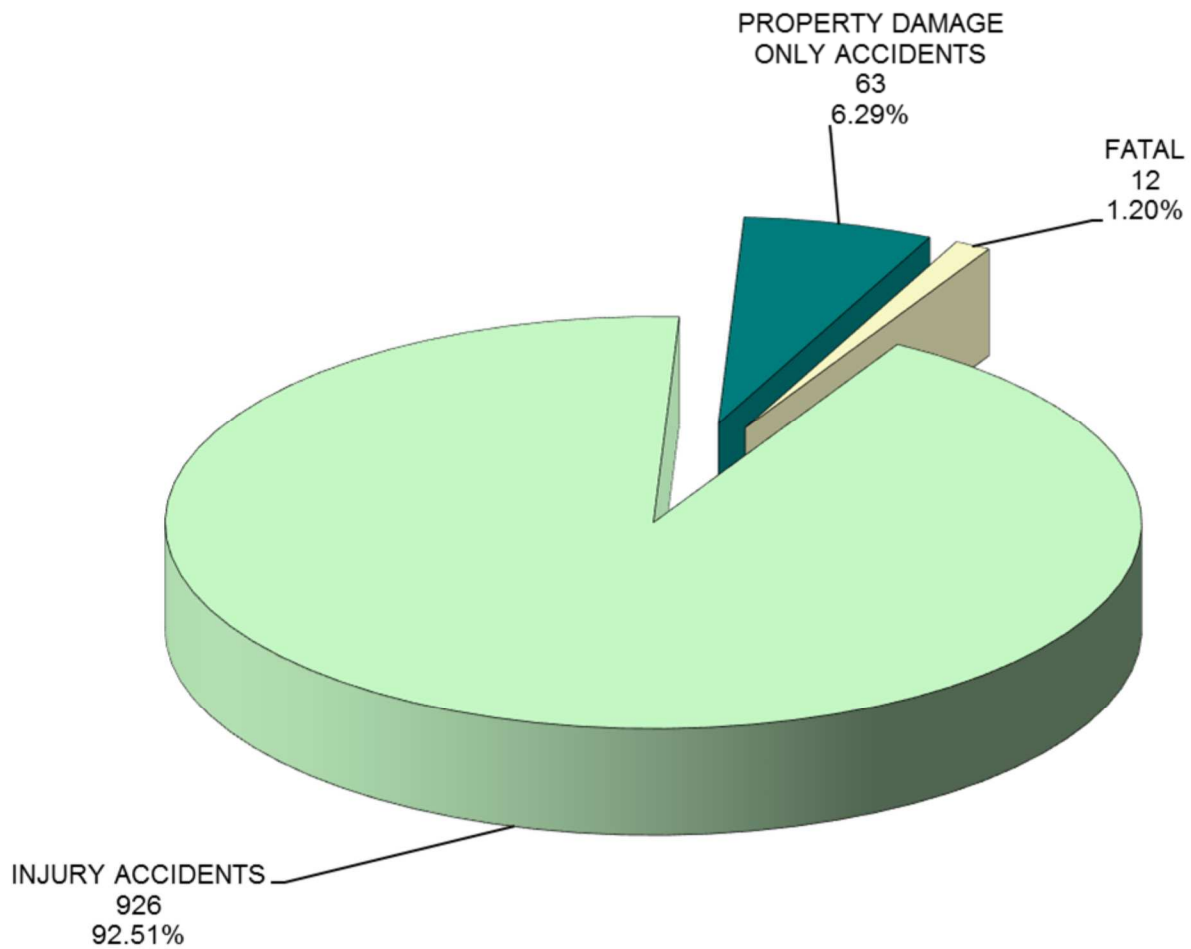


COUNTY	INJURY TYPE	2013	2014	2015	2016	2017	TOTAL CRASHES	PERCENT OF TOTAL
OXFORD Percent Personal Injury 100.00%	FATAL (K)	1	0	0	1	0	2	0.20%
	INCAPACITATING (A)	1	2	1	0	1	5	0.50%
	NON-INCAPACITATING (B)	0	1	1	2	2	6	0.60%
	POSSIBLE INJURY (C)	3	1	1	1	1	7	0.70%
	PROPERTY DAMAGE ONLY (PDO)	0	0	0	0	0	0	0.00%
	COUNTY SUBTOTAL	5	4	3	4	4	20	2.00%
PENOBSCOT Percent Personal Injury 92.38%	FATAL (K)	1	0	0	0	0	1	0.10%
	INCAPACITATING (A)	6	2	1	1	4	14	1.40%
	NON-INCAPACITATING (B)	7	4	4	3	12	30	3.00%
	POSSIBLE INJURY (C)	8	10	12	10	12	52	5.19%
	PROPERTY DAMAGE ONLY (PDO)	0	1	3	3	1	8	0.80%
	COUNTY SUBTOTAL	22	17	20	17	29	105	10.49%
PISCATAQUIS Percent Personal Injury 0.00%	FATAL (K)	0	0	0	0	0	0	0.00%
	INCAPACITATING (A)	0	0	0	0	0	0	0.00%
	NON-INCAPACITATING (B)	0	0	0	0	0	0	0.00%
	POSSIBLE INJURY (C)	0	0	0	0	0	0	0.00%
	PROPERTY DAMAGE ONLY (PDO)	0	0	0	0	0	0	0.00%
	COUNTY SUBTOTAL	0	0	0	0	0	0	0.00%
SAGadahoc Percent Personal Injury 100.00%	FATAL (K)	0	0	0	0	0	0	0.00%
	INCAPACITATING (A)	1	0	0	0	1	2	0.20%
	NON-INCAPACITATING (B)	0	4	2	1	1	8	0.80%
	POSSIBLE INJURY (C)	2	0	2	1	1	6	0.60%
	PROPERTY DAMAGE ONLY (PDO)	0	0	0	0	0	0	0.00%
	COUNTY SUBTOTAL	3	4	4	2	3	16	1.60%
SOMERSET Percent Personal Injury 100.00%	FATAL (K)	0	0	0	0	0	0	0.00%
	INCAPACITATING (A)	0	1	0	0	0	1	0.10%
	NON-INCAPACITATING (B)	2	1	0	0	1	4	0.40%
	POSSIBLE INJURY (C)	3	1	2	0	2	8	0.80%
	PROPERTY DAMAGE ONLY (PDO)	0	0	0	0	0	0	0.00%
	COUNTY SUBTOTAL	5	3	2	0	3	13	1.30%
WALDO Percent Personal Injury 100.00%	FATAL (K)	0	0	0	0	0	0	0.00%
	INCAPACITATING (A)	2	2	1	0	0	5	0.50%
	NON-INCAPACITATING (B)	3	1	0	0	0	4	0.40%
	POSSIBLE INJURY (C)	1	2	0	0	1	4	0.40%
	PROPERTY DAMAGE ONLY (PDO)	0	0	0	0	0	0	0.00%
	COUNTY SUBTOTAL	6	5	1	0	1	13	1.30%
WASHINGTON Percent Personal Injury 75.00%	FATAL (K)	0	0	0	0	0	0	0.00%
	INCAPACITATING (A)	0	0	0	0	0	0	0.00%
	NON-INCAPACITATING (B)	1	0	1	0	0	2	0.20%
	POSSIBLE INJURY (C)	0	0	0	0	1	1	0.10%
	PROPERTY DAMAGE ONLY (PDO)	0	0	0	0	1	1	0.10%
	COUNTY SUBTOTAL	1	0	1	0	2	4	0.40%
YORK Percent Personal Injury 96.37%	FATAL (K)	1	0	0	0	2	3	0.30%
	INCAPACITATING (A)	1	8	6	9	1	25	2.50%
	NON-INCAPACITATING (B)	16	15	15	20	12	78	7.79%
	POSSIBLE INJURY (C)	16	15	14	19	16	80	7.99%
	PROPERTY DAMAGE ONLY (PDO)	2	1	2	0	2	7	0.70%
	COUNTY SUBTOTAL	36	39	37	48	33	193	19.28%
COUNTY GRAND TOTAL Percent Personal Injury 93.71%	FATAL (K)	4	2	0	4	2	12	1.20%
	INCAPACITATING (A)	21	29	19	23	21	113	11.29%
	NON-INCAPACITATING (B)	82	71	68	78	64	363	36.26%
	POSSIBLE INJURY (C)	89	93	87	90	91	450	44.96%
	PROPERTY DAMAGE ONLY (PDO)	13	12	15	14	9	63	6.29%
	GRAND TOTAL	209	207	189	209	187	1,001	100.00%

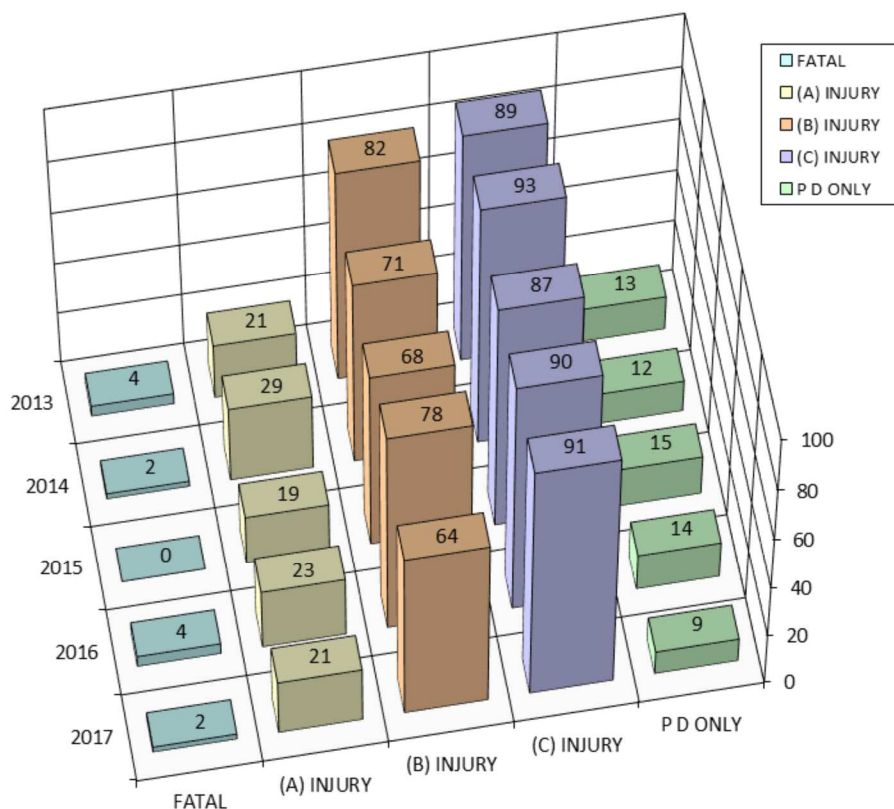


MAINE HIGHWAY BICYCLE CRASHES 2013 - 2017

1,001 Total Bicycle Crashes



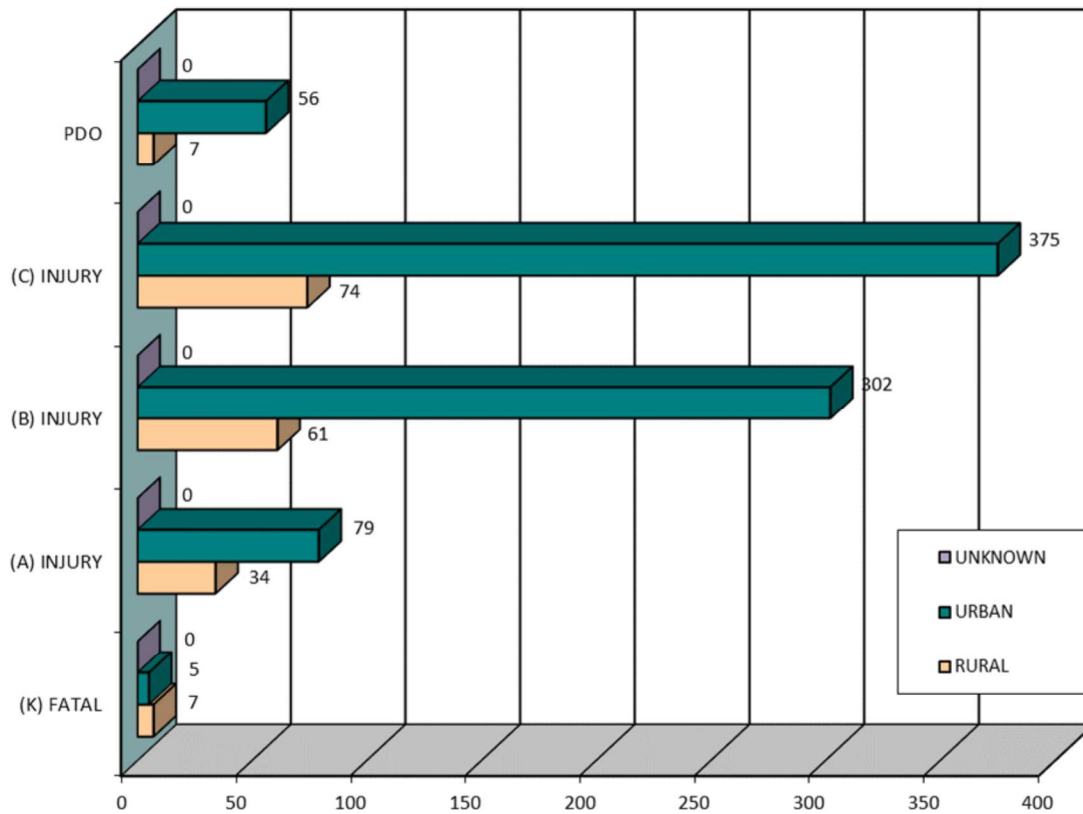
MAINE HIGHWAY BICYCLE CRASH SEVERITY BY YEAR 2013 - 2017



YEAR	FATAL CRASH (K)	INCAPACITATING INJURY (A)	NON INCAPACITATING INJURY (B)	POSSIBLE INJURY (C)	PROPERTY DAMAGE ONLY (PDO)	TOTAL CRASHES
2013	4	21	82	89	13	209
2014	2	29	71	93	12	207
2015	0	19	68	87	15	189
2016	4	23	78	90	14	209
2017	2	21	64	91	9	187
TOTAL	12	113	363	450	63	1,001
PERCENT	1.20%	PERCENT INJURY CRASHES = 92.51%			6.29%	100.00%



MAINE HIGHWAY BICYCLE CRASH SEVERITY BY RURAL URBAN DESIGNATION 2013 - 2017



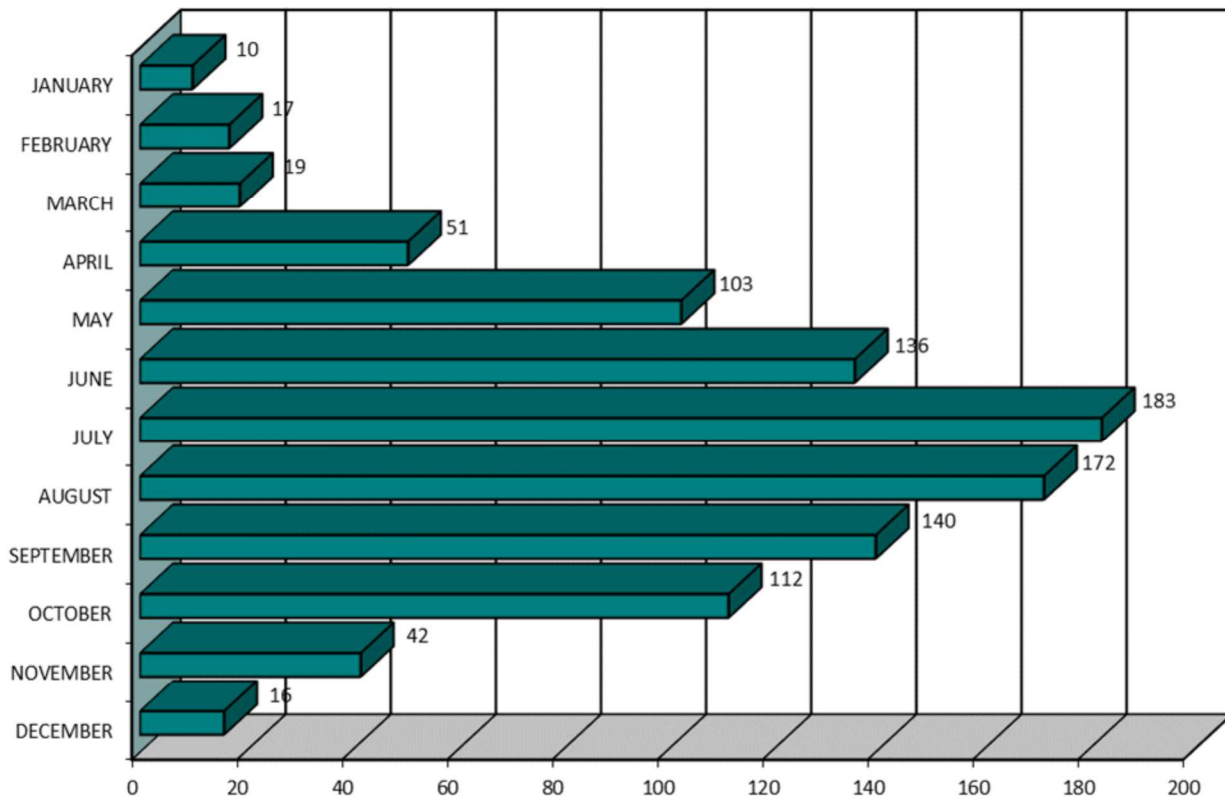
RURAL URBAN DESIGNATION		FATAL CRASH (K)	INCAPACITATING INJURY (A)	NON INCAPACITATING INJURY (B)	POSSIBLE INJURY (C)	PROPERTY DAMAGE ONLY (PDO)	FIVE YEAR TOTAL
RURAL	(1)	7	34	61	74	7	183
URBAN	(2)	5	79	302	375	56	817
UNKNOWN		0	0	0	0	0	0
TOTAL		12	113	363	450	63	1,001



MAINE HIGHWAY BICYCLE CRASHES

BY MONTH

2013- 2017



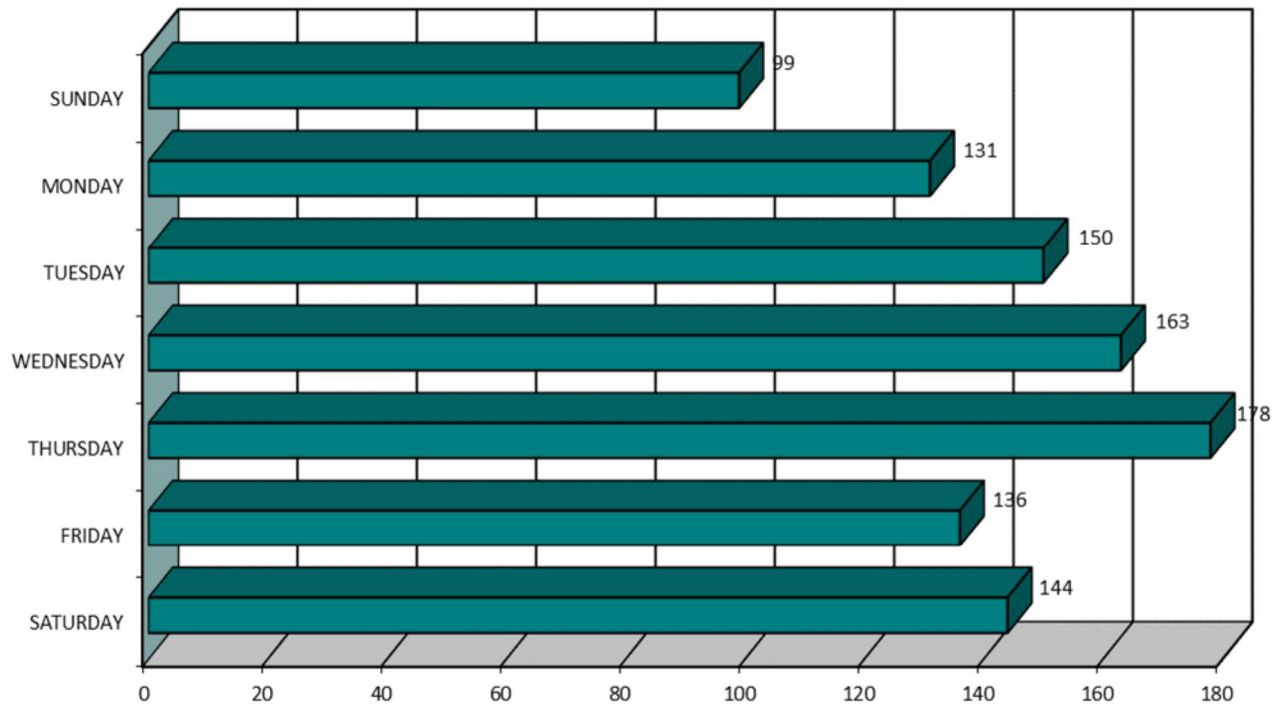
MONTH	2013	2014	2015	2016	2017	FIVE YEAR TOTAL	PERCENT OF TOTAL
JANUARY	3	1	3	1	2	10	1.00%
FEBRUARY	7	1	0	5	4	17	1.70%
MARCH	4	0	5	8	2	19	1.90%
APRIL	16	8	9	9	9	51	5.09%
MAY	21	17	20	23	22	103	10.29%
JUNE	23	29	30	28	26	136	13.59%
JULY	44	34	36	36	33	183	18.28%
AUGUST	31	47	31	32	31	172	17.18%
SEPTEMBER	27	33	22	33	25	140	13.99%
OCTOBER	23	27	19	18	25	112	11.19%
NOVEMBER	8	5	10	13	6	42	4.20%
DECEMBER	2	5	4	3	2	16	1.60%
TOTAL	209	207	189	209	187	1,001	100.00%



MAINE HIGHWAY BICYCLE CRASHES

BY DAY OF THE WEEK

2013 - 2017



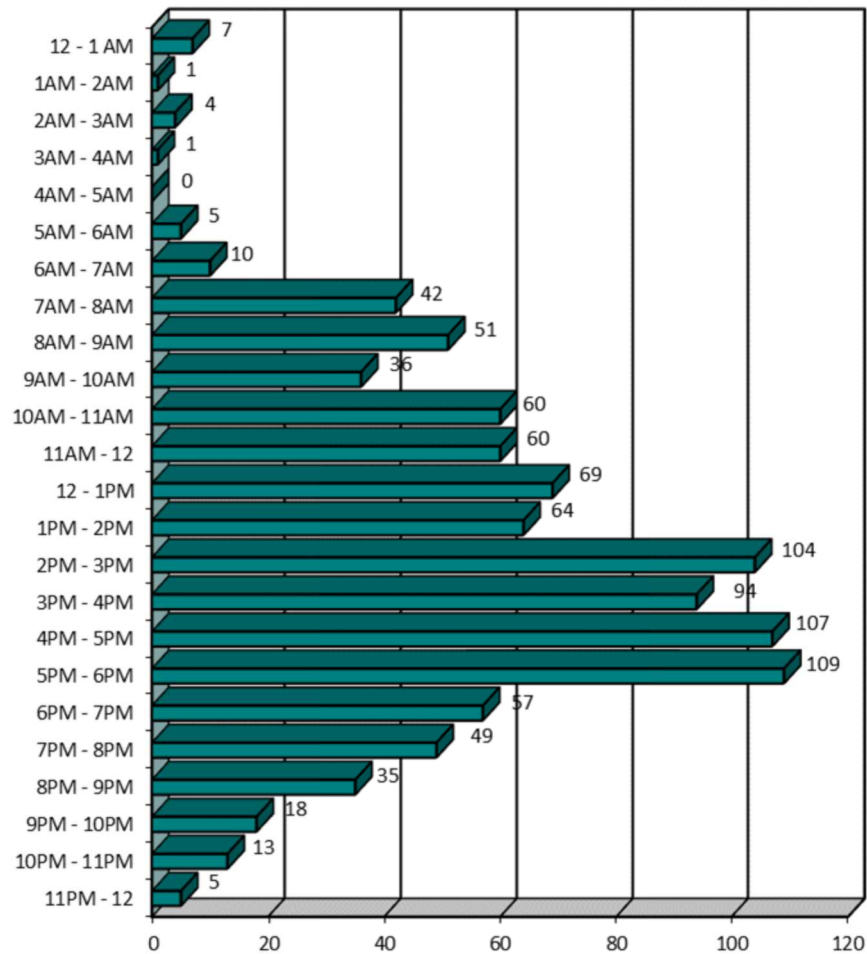
DAY OF THE WEEK	2013	2014	2015	2016	2017	FIVE YEAR TOTAL	PERCENT OF TOTAL
SUNDAY	23	19	14	23	20	99	9.89%
MONDAY	31	25	26	29	20	131	13.09%
TUESDAY	27	28	25	34	36	150	14.99%
WEDNESDAY	33	43	28	30	29	163	16.28%
THURSDAY	34	35	33	41	35	178	17.78%
FRIDAY	34	26	30	25	21	136	13.59%
SATURDAY	27	31	33	27	26	144	14.39%
TOTAL	209	207	189	209	187	1,001	100.00%



MAINE HIGHWAY BICYCLE CRASHES

BY TIME OF DAY

2013 - 2017



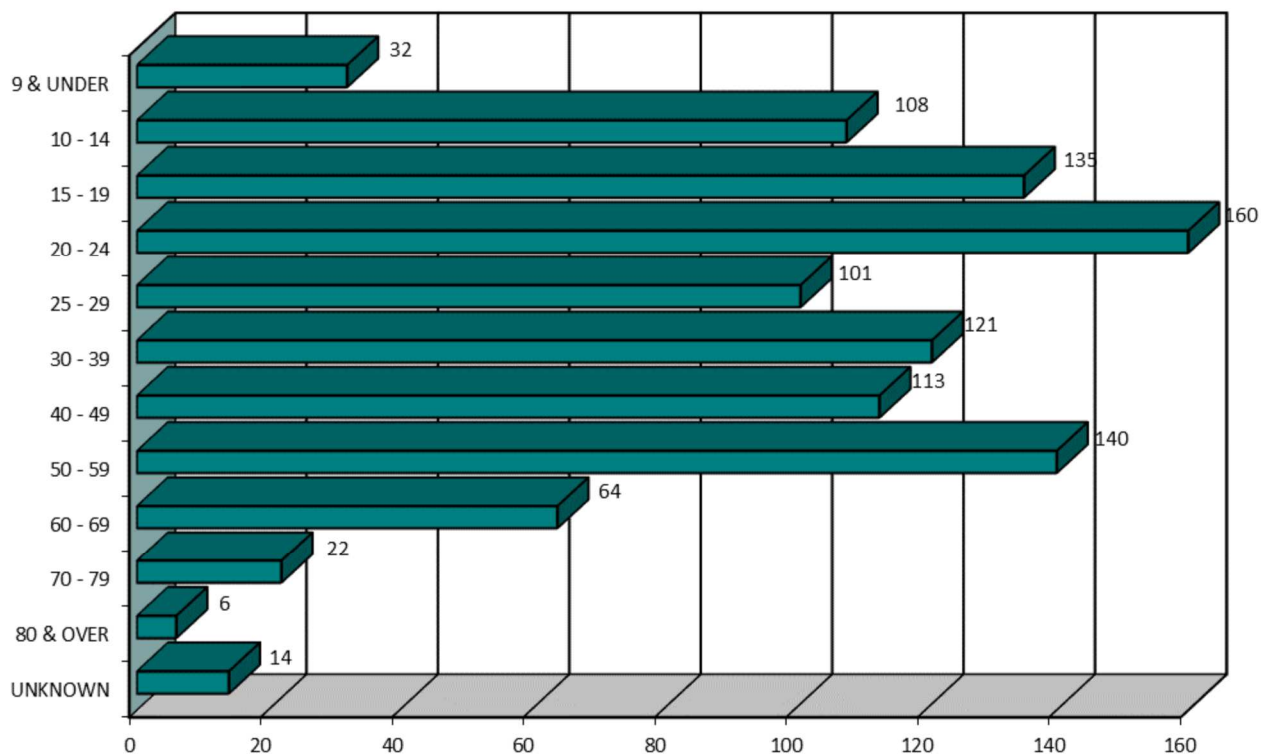
TIME OF DAY	2013	2014	2015	2016	2017	FIVE YEAR TOTAL
12 - 1 AM	0	2	1	3	1	7
1AM - 2AM	0	1	0	0	0	1
2AM - 3AM	1	1	1	1	0	4
3AM - 4AM	0	0	1	0	0	1
4AM - 5AM	0	0	0	0	0	0
5AM - 6AM	1	2	0	1	1	5
6AM - 7AM	4	0	2	1	3	10
7AM - 8AM	9	10	4	9	10	42
8AM - 9AM	16	5	10	7	13	51
9AM - 10AM	6	8	11	3	8	36
10AM - 11AM	11	15	13	12	9	60
11AM - 12	11	13	16	12	8	60
12 - 1PM	19	12	9	15	14	69
1PM - 2PM	13	9	13	20	9	64
2PM - 3PM	19	20	24	19	22	104
3PM - 4PM	25	20	13	18	18	94
4PM - 5PM	20	24	22	20	21	107
5PM - 6PM	23	25	20	24	17	109
6PM - 7PM	7	13	8	15	14	57
7PM - 8PM	10	15	7	10	7	49
8PM - 9PM	7	6	8	10	4	35
9PM - 10PM	5	3	3	4	3	18
10PM - 11PM	1	2	2	5	3	13
11PM - 12	1	1	1	0	2	5
TOTAL	209	207	189	209	187	1,001



BICYCLISTS INVOLVED IN MAINE HIGHWAY CRASHES

BY AGE GROUP

2013 - 2017



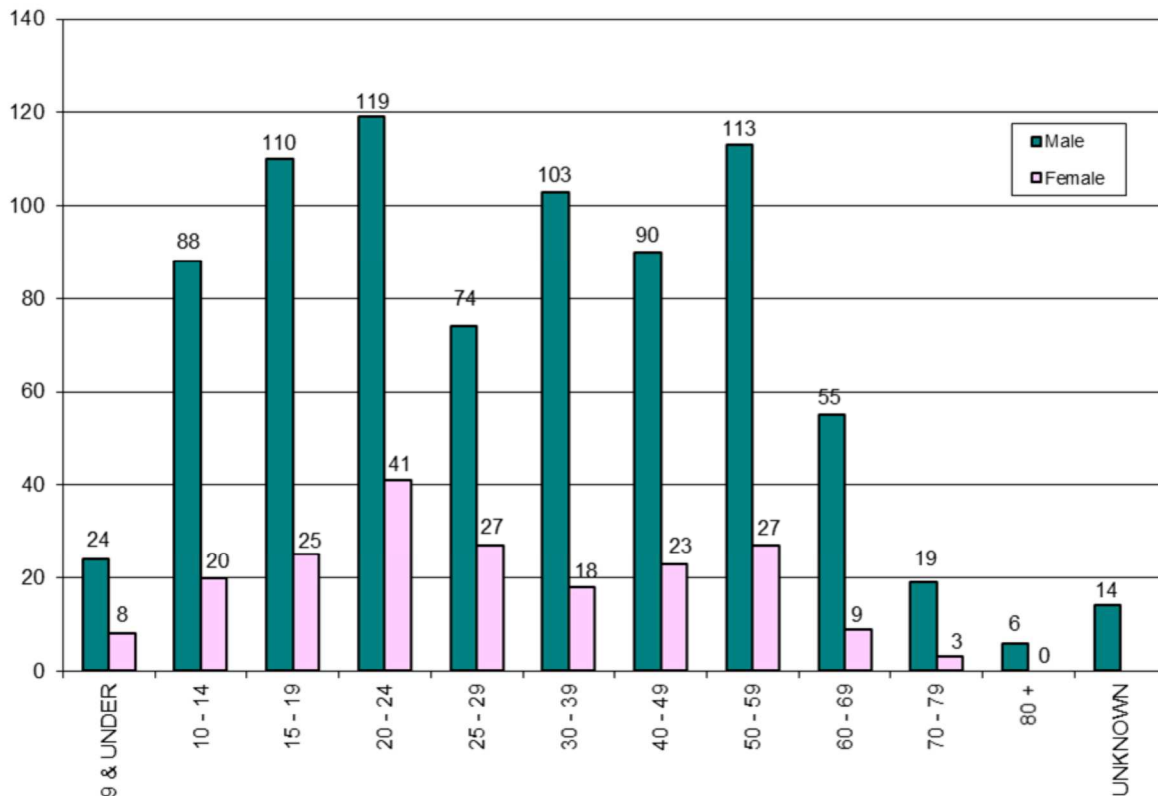
AGE OF BICYCLIST	2013	2014	2015	2016	2017	FIVE YEAR TOTAL	PERCENT OF TOTAL
9 & UNDER	2	6	10	7	7	32	3.15%
10 - 14	16	16	25	21	30	108	10.63%
15 - 19	28	28	26	32	21	135	13.29%
20 - 24	42	42	17	34	25	160	15.75%
25 - 29	21	22	19	19	20	101	9.94%
30 - 39	28	24	26	25	18	121	11.91%
40 - 49	27	29	19	18	20	113	11.12%
50 - 59	36	27	26	24	27	140	13.78%
60 - 69	8	9	12	19	16	64	6.30%
70 - 79	2	4	8	5	3	22	2.17%
80 & OVER	1	1	0	3	1	6	0.59%
UNKNOWN	2	2	3	5	2	14	1.38%
TOTAL	213	210	191	212	190	1,016	100.00%



BICYCLISTS INVOLVED IN MAINE HIGHWAY CRASHES

BY AGE GROUP AND GENDER

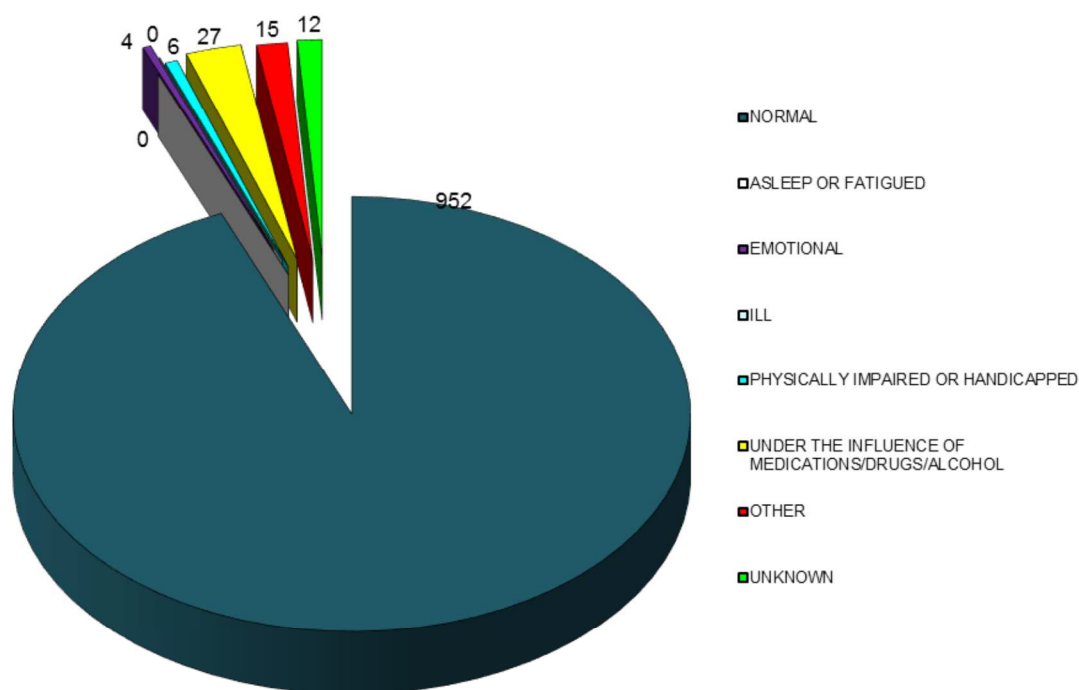
2013 - 2017



AGE GROUP OF BICYCLIST BY GENDER	2013		2014		2015		2016		2017		TOTALS		FIVE YEAR TOTAL	PERCENT OF TOTAL
	M	F	M	F	M	F	M	F	M	F	M	F		
9 & UNDER	1	1	5	1	6	4	6	1	6	1	24	8	32	3.15%
10 - 14	12	4	9	7	21	4	20	1	26	4	88	20	108	10.63%
15 - 19	24	4	23	5	18	8	27	5	18	3	110	25	135	13.29%
20 - 24	31	11	34	8	15	2	23	11	16	9	119	41	160	15.75%
25 - 29	13	8	20	2	15	4	12	7	14	6	74	27	101	9.94%
30 - 39	22	6	19	5	24	2	23	2	15	3	103	18	121	11.91%
40 - 49	19	8	25	4	15	4	14	4	17	3	90	23	113	11.12%
50 - 59	30	6	20	7	19	7	22	2	22	5	113	27	140	13.78%
60 - 69	6	2	9	0	11	1	17	2	12	4	55	9	64	6.30%
70 - 79	2	0	4	0	7	1	3	2	3	0	19	3	22	2.17%
80 & OVER	1	0	1	0	0	0	3	0	1	0	6	0	6	0.59%
UNKNOWN	2		2		3		5		2		14		14	1.38%
TOTAL BY GENDER	161	50	169	39	151	37	170	37	150	38	801	201		
TOTAL	213		210		191		212		190		1,016		1,016	100.00%



MAINE HIGHWAY BICYCLE CRASHES BY APPARENT PHYSICAL CONDITIONS 2013 - 2017



BICYCLIST PHYSICAL CONDITION	2013	2014	2015	2016	2017	FIVE YEAR TOTAL	PERCENT OF TOTAL
APPARENTLY NORMAL	195	197	181	200	179	952	93.70%
ASLEEP OR FATIGUED	0	0	0	0	0	0	0.00%
EMOTIONAL (depressed, angry, disturbed, etc.)	1	0	1	1	1	4	0.39%
ILL (sick)	0	0	0	0	0	0	0.00%
PHYSICALLY IMPAIRED OR HANDICAPPED	1	3	1	1	0	6	0.59%
UNDER THE INFLUENCE OF MEDICATIONS/DRUGS/ALCOHOL	9	7	2	5	4	27	2.66%
OTHER	5	1	1	2	6	15	1.48%
UNKNOWN	2	2	5	3	0	12	1.18%
TOTAL	213	210	191	212	190	1,016	100.00%



CONTRIBUTING FACTORS TO MAINE HIGHWAY BICYCLE CRASHES 2013 - 2017

DRIVER ACTIONS (actions 1 & 2 combined)	2013	2014	2015	2016	2017	Totals
NO CONTRIBUTING ACTION	107	109	87	107	85	495
RAN OFF ROADWAY	2	1	2	1	3	9
FAILED TO YIELD RIGHT-OF-WAY	60	53	50	60	52	275
RAN RED LIGHT	1	2	0	0	1	4
RAN STOP SIGN	4	4	1	3	0	12
DISREGARDED OTHER TRAFFIC SIGN	0	0	1	1	0	2
DISREGARDED OTHER ROAD MARKINGS	0	0	1	0	0	1
EXCEEDED POSTED SPEED LIMIT	0	0	1	2	0	3
DROVE TOO FAST FOR CONDITIONS	0	0	1	0	1	2
IMPROPER TURN	7	5	11	9	6	38
IMPROPER BACKING	1	2	0	2	2	7
IMPROPER PASSING	1	1	2	3	2	9
WRONG WAY	0	0	0	0	0	0
FOLLOWED TOO CLOSELY	2	1	2	0	1	6
FAILED TO KEEP IN PROPER LANE	1	0	3	2	3	9
OPERATED MOTOR VEHICLE IN ERRATIC, RECKLESS, CARELESS, NEGLIGENT OR AGGRESSIVE MANNER	6	1	2	5	7	21
SWERVED OR AVOIDED DUE TO WIND, SLIPPERY SURFACE, MOTOR VEHICLE, OBJECT, NON-MOTORIST IN ROADWAY	0	4	1	1	0	6
OVER-CORRECTING/OVER-STEERING	0	0	0	0	0	0
OTHER CONTRIBUTING ACTION	12	7	13	8	7	47
UNKNOWN	20	11	14	7	7	59
TOTALS	224	201	192	211	177	1005
BICYCLIST ACTIONS						
RIDING WITH TRAFFIC	98	90	77	77	67	409
RIDING AGAINST TRAFFIC	29	30	21	39	38	157
MAKING RIGHT TURN	0	2	3	3	4	12
MAKING LEFT TURN	8	9	8	12	8	45
MAKING U TURN	1	0	0	2	0	3
RIDING ACROSS ROAD	43	49	46	47	50	235
SLOWING, STOPPING, STARTING IN ROAD	9	3	4	2	6	24
OTHER BYCLIST ACTION	10	15	19	16	15	75
UNKNOWN	4	2	3	4	2	15
TOTALS	202	200	181	202	190	975
VEHICULAR FACTORS						
NONE	193	191	172	193	170	919
BRAKES	0	0	0	1	0	1
EXHAUST SYSTEM	0	0	0	1	0	1
BODY, DOORS	1	0	1	0	1	3
STEERING	0	0	0	0	0	0
POWER TRAIN	0	0	0	0	0	0
SUSPENSION	0	0	0	0	0	0
TIRES	0	0	0	0	0	0
WHEELS	0	0	0	0	0	0
LIGHTS (head, signal, tail, brake)	0	0	0	0	0	0
WINDOWS/WINDSHIELD	0	0	0	0	0	0
MIRRORS	0	0	0	0	0	0
WIPERS	0	0	0	0	0	0
TRUCK COUPLING/TRAILER HITCH/SAFETY CHAINS	0	0	0	0	0	0
OTHER	6	2	1	2	0	11
TOTALS	200	193	174	197	171	935



VEHICLES INVOLVED IN MAINE HIGHWAY BICYCLE CRASHES 2013- 2017

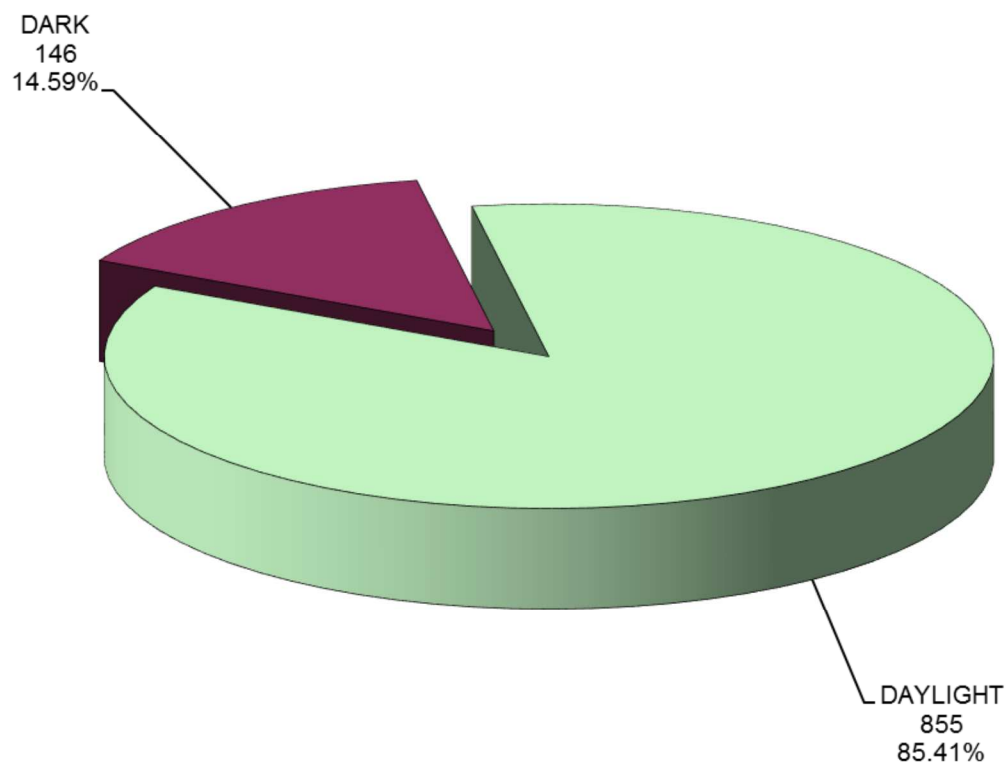
VEHICLE TYPE INVOLVED IN BICYCLE CRASHES	2013	2014	2015	2016	2017	FIVE YEAR TOTAL
PASSENGER CAR	117	132	105	123	117	594
(SPORT) UTILITY VEHICLE	34	26	38	31	31	160
PASSENGER VAN	7	8	7	10	4	36
CARGO VAN (10k or less)	2	2	1	3	3	11
PICKUP TRUCK	38	28	22	31	20	139
MOTOR HOME	0	0	0	1	0	1
SCHOOL BUS	0	0	1	0	0	1
TRANSIT BUS	1	1	0	0	0	2
MOTOR COACH	0	0	0	0	0	0
OTHER BUS	0	0	0	0	0	0
MOTORCYCLE	1	2	4	3	1	11
MOPED	0	0	0	0	0	0
LOW SPEED VEHICLE	0	0	0	0	0	0
AUTOCYCLE	0	0	0	0	0	0
EXPERIMENTAL	0	0	0	0	0	0
OTHER LIGHT TRUCK (10,000 lbs or less)	0	0	1	0	0	1
MEDIUM /HEAVY TRUCKS (more than 10,000 lbs)	3	2	2	2	4	13
ATV (2,3,4-WHEEL)	0	0	0	0	0	0
SNOWMOBILE	0	0	0	0	0	0
PEDESTRIAN	0	1	1	1	1	4
BICYCLE	213	210	191	212	190	1,016
OTHER	13	7	5	5	1	31
TOTAL VEHICLES INVOLVED	429	419	378	422	372	2,020



MAINE HIGHWAY BICYCLE CRASHES

BY LIGHT CONDITION

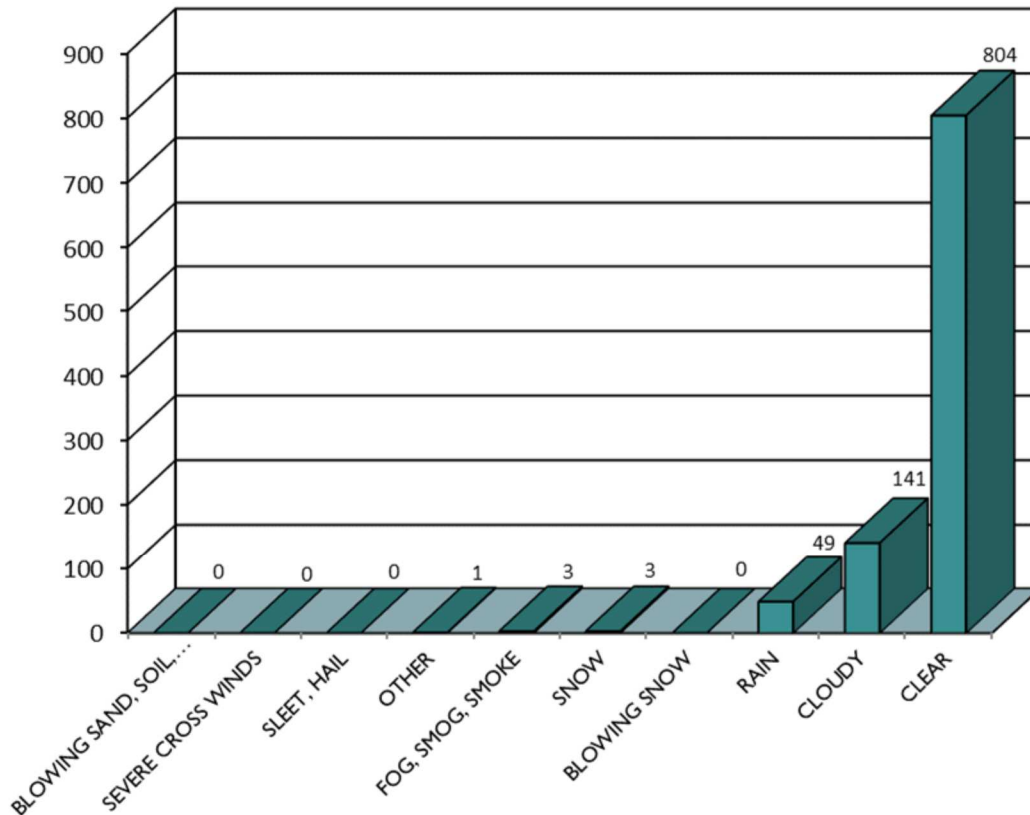
2013 - 2017



LIGHT CONDITION	2013	2014	2015	2016	2017	FIVE YEAR TOTAL	PERCENT OF TOTAL
DAYLIGHT	182	174	164	171	164	855	85.41%
DARK	27	33	25	38	23	146	14.59%
TOTAL	209	207	189	209	187	1,001	100.00%



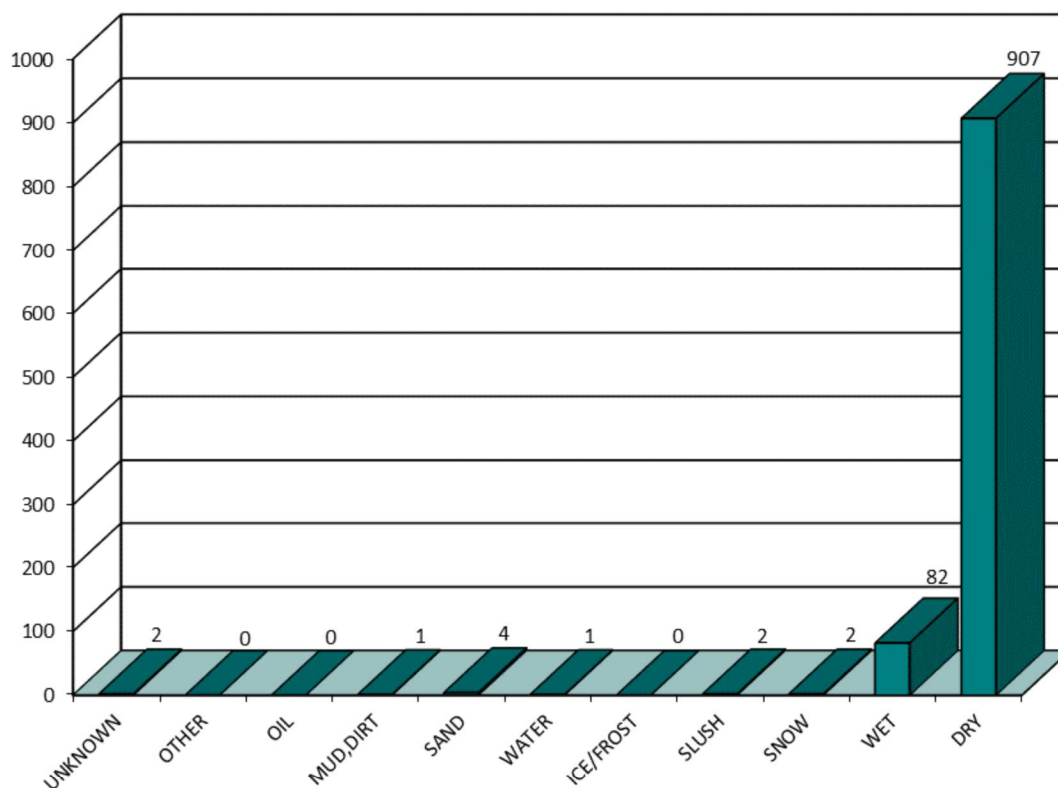
MAINE HIGHWAY BICYCLE CRASHES BY WEATHER CONDITIONS 2013 - 2017



WEATHER CONDITIONS	2013	2014	2015	2016	2017	FIVE YEAR TOTAL
BLOWING SAND, SOIL, DIRT	0	0	0	0	0	0
SEVERE CROSS WINDS	0	0	0	0	0	0
SLEET,HAIL (freezing rain or drizzle)	0	0	0	0	0	0
OTHER	0	0	1	0	0	1
FOG,SMOG,SMOKE	1	0	1	1	0	3
SNOW	1	0	1	0	1	3
BLOWING SNOW	0	0	0	0	0	0
RAIN	9	15	7	7	11	49
CLOUDY	27	26	29	32	27	141
CLEAR	171	166	150	169	148	804
TOTAL	209	207	189	209	187	1,001



MAINE HIGHWAY BICYCLE CRASHES BY ROAD SURFACE CONDITIONS 2013 - 2017



ROAD SURFACE CONDITIONS	2013	2014	2015	2016	2017	FIVE YEAR TOTAL
UNKNOWN	1	0	1	0	0	2
OTHER	0	0	0	0	0	0
OIL	0	0	0	0	0	0
MUD,DIRT	1	0	0	0	0	1
SAND	1	1	1	0	1	4
WATER (standing, moving)	1	0	0	0	0	1
ICE/FROST	0	0	0	0	0	0
SLUSH	0	0	1	0	1	2
SNOW	1	0	0	0	1	2
WET	16	20	15	16	15	82
DRY	188	186	171	193	169	907
TOTAL	209	207	189	209	187	1,001

