

**MAINE HIGHWAY SAFETY FACTS**  
**2018 Edition (2008-2017)**



## **MAINE HIGHWAY SAFETY FACTS 2018 Edition (2008-2017)**

The Maine Department of Public Safety, Bureau of Highway Safety and the Maine Department of Transportation are pleased to present the 2018 edition of Maine Highway Safety Facts. This publication provides Maine crash data facts through 2017 giving a view of traffic crashes and their factors. It can be a valuable tool in problem identification, safety education and community activities. Since it is intended to provide a general information overview, the data is presented in a very basic format. Trend lines reflect five-year annual averages. Topics covered represent the most frequently requested information. Data sources are from the Maine Fatal Analysis Reporting System (FARS) and MaineDOT's crash data system. Any comments or questions you may have about the information are welcome.

### **Contacts:**

#### **Lauren Stewart, Director**

Maine Department of Public Safety  
Bureau of Highway Safety  
lauren.v.stewart@maine.gov  
207.626.3841



#### **Robert Skehan, P.E., Director**

Maine Department of Transportation  
Office of Safety  
robert.skehan@maine.gov  
207.624.3349

**MaineDOT**

[themtsc.org](http://themtsc.org)



Note: Some of this edition's data is restated based on system and data definition updates.

## Table Of Contents

### Statewide Crash Overview

Maine Quick Crash Facts.....	4-5
Crashes and Crash Rates.....	6-7
Fatalities and Fatality Rates .....	8-9
Incapacitating Injuries.....	10
Snapshot Look at Focus Areas - Maine Top Crash Types.....	11
Crashes and Fatalities by Jurisdiction.....	12-13
Crashes and Fatalities by Federal Functional Class.....	14-15
Crashes and Fatalities by Type.....	16-17
Crashes and Fatalities by Month .....	18-19
Crashes and Fatalities by Day of Week .....	20-21
Crashes and Fatalities by Time of Day .....	22-23

### Road Settings

Lane Departure.....	24-25
Head-On.....	26-27
Went-Off-Road.....	28-29
Intersections.....	30-31
Road Surface Conditions.....	32
Fixed Object Struck.....	33

### Behavior

Driver Actions.....	34-35
Seat Belt Usage.....	36-37
Speed .....	38-39
Impaired.....	40-41
Distracted .....	42-43
Operating After Suspension .....	44
Fatalities by Selected Categories by Year .....	45

### Road User Groups

Crash and Fatality Rates by Driver Age .....	46-47
Younger Drivers.....	48-53
Mature Drivers.....	54-55
Bicyclists.....	56-57
Pedestrians.....	58-59

### Special Vehicle Classes

Large Trucks and Commercial Vehicles .....	60-63
Motorcycles.....	64-65

### Large Animals (Deer and Moose)

Crashes and Fatalities .....	66-67
Crashes by County.....	68
Crashes by Month.....	69
Crashes by Light Condition.....	70-71

# Maine Quick Crash Facts

Facts based on average annual experience from 2013-2017

**Motor vehicle crashes occurred with the following average frequency:**

- One fatal crash **every 57 hours**
- One personal injury crash **every 60 minutes**
- One property-damage only crash **every 22 minutes**
- One reportable traffic crash **every 16 minutes**

**There were 32,713 traffic crashes on Maine public roads involving:**

- 51,016** vehicles
- 67,412** vehicle occupants (drivers and passengers)
- 292** pedestrians
- 203** bicyclists
- 19** ATVs
- 8** snowmobiles

Nearly **15 billion** vehicle miles were traveled within the State of Maine.



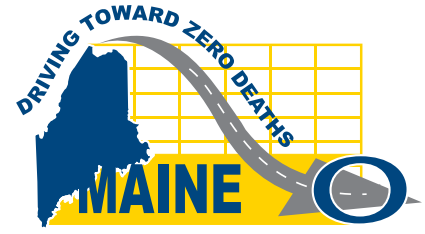
**153** people were killed in traffic crashes. **46** of those deaths were the result of drinking and driving.

**21%** of Maine's crash fatalities occur between **9pm** and **2am**, even though there is very low traffic volume at this time.

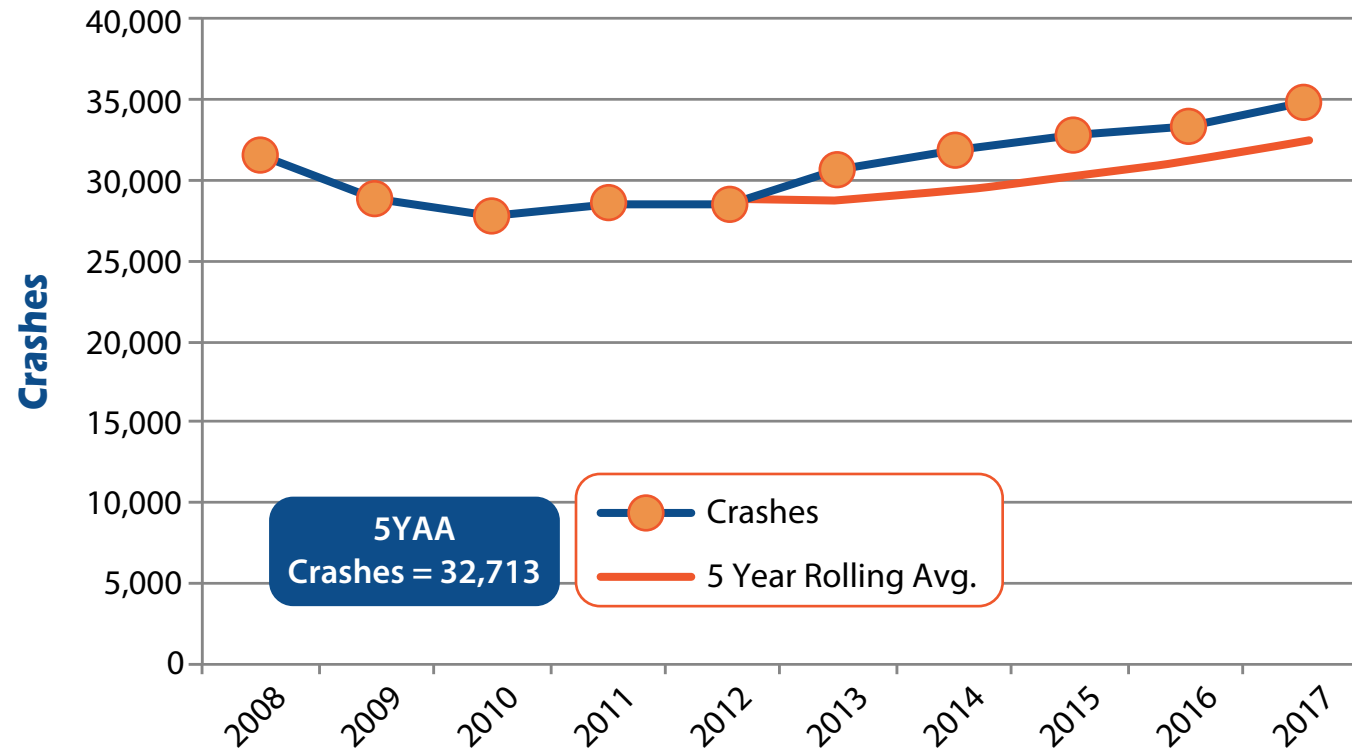
Collisions involved **45,204** Maine drivers and **4,196** out-of-state drivers.

**8,203** injury crashes

**142** fatal crashes



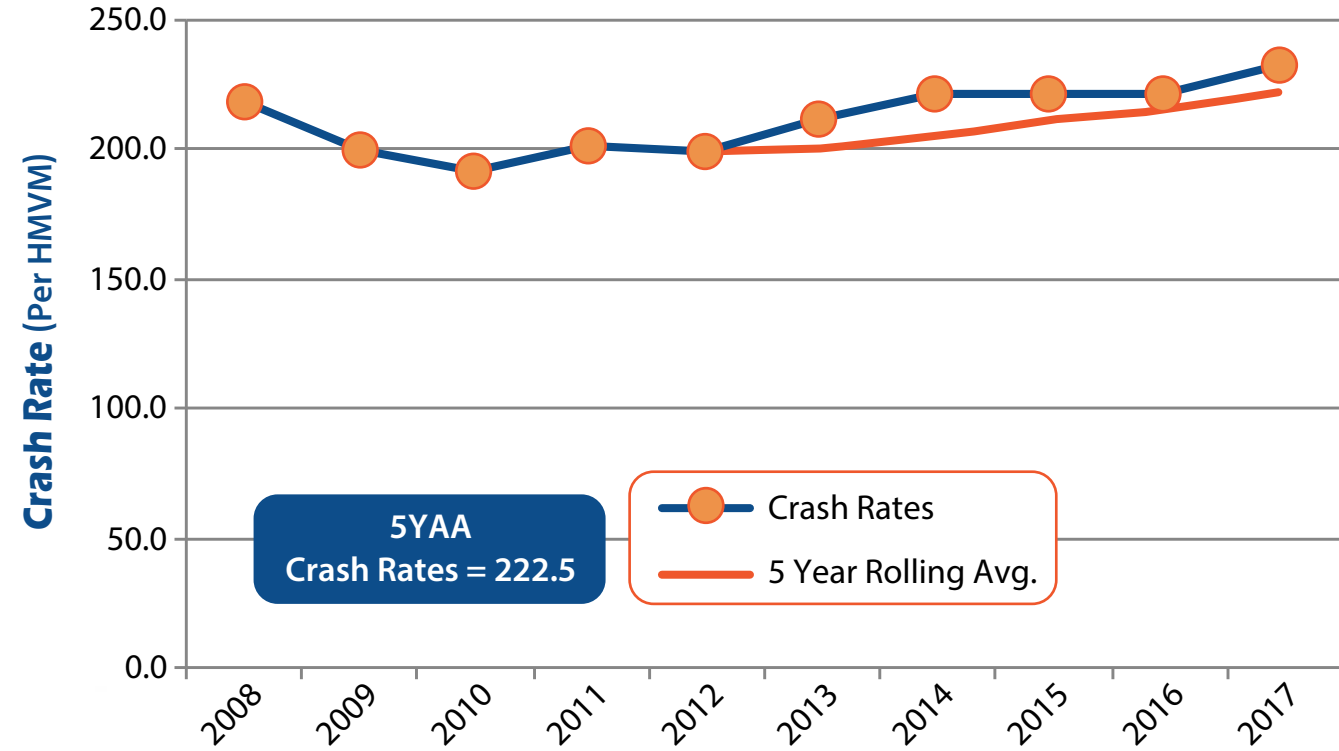
## Maine Crashes



**5YAA**  
Crashes = 32,713

● Crashes  
— 5 Year Rolling Avg.

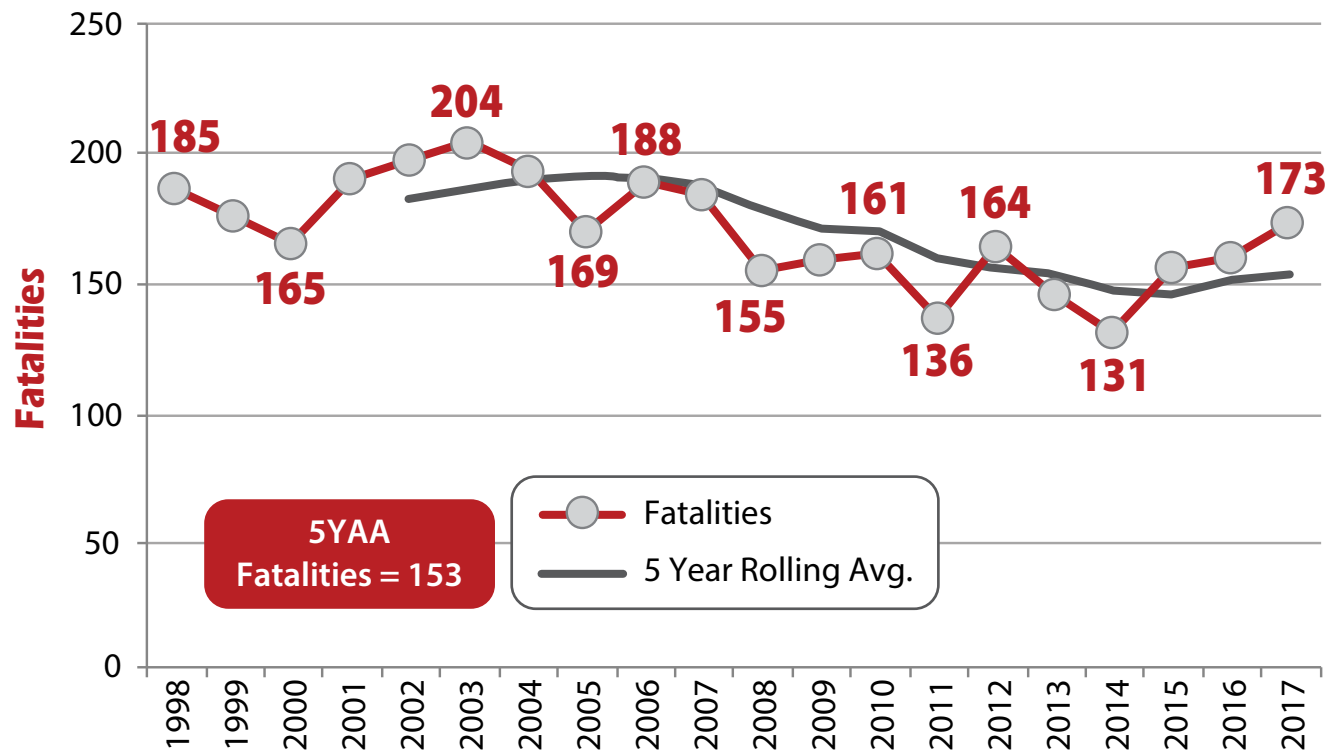
## Maine Crash Rates



**5YAA**  
Crash Rates = 222.5

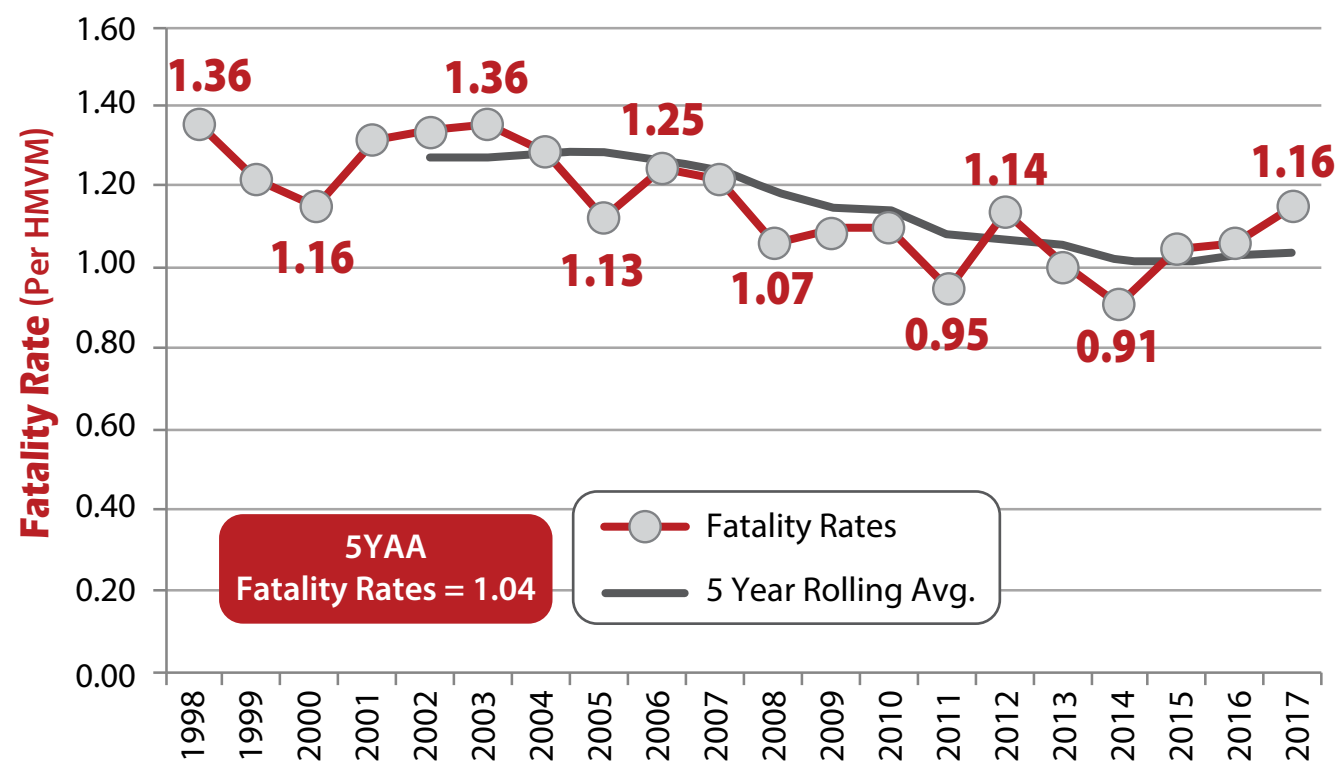
● Crash Rates  
— 5 Year Rolling Avg.

## Maine Fatalities



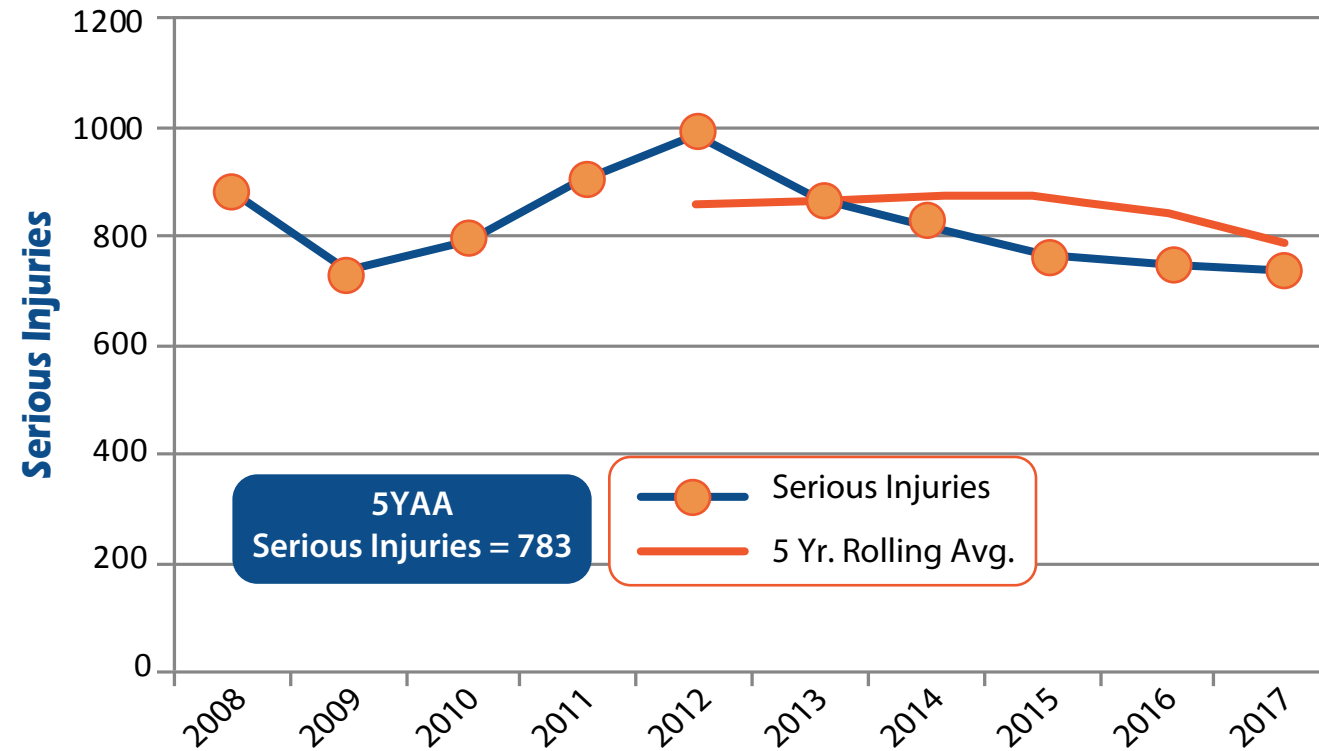
8 *Maine fatalities as identified in Fatal Analysis Reporting System ([www.nhtsa.gov/FARS](http://www.nhtsa.gov/FARS))*

## Maine Fatality Rates



9 *Fatalities per estimated hundred million vehicle miles traveled.*

## Maine Serious Injury Outcomes



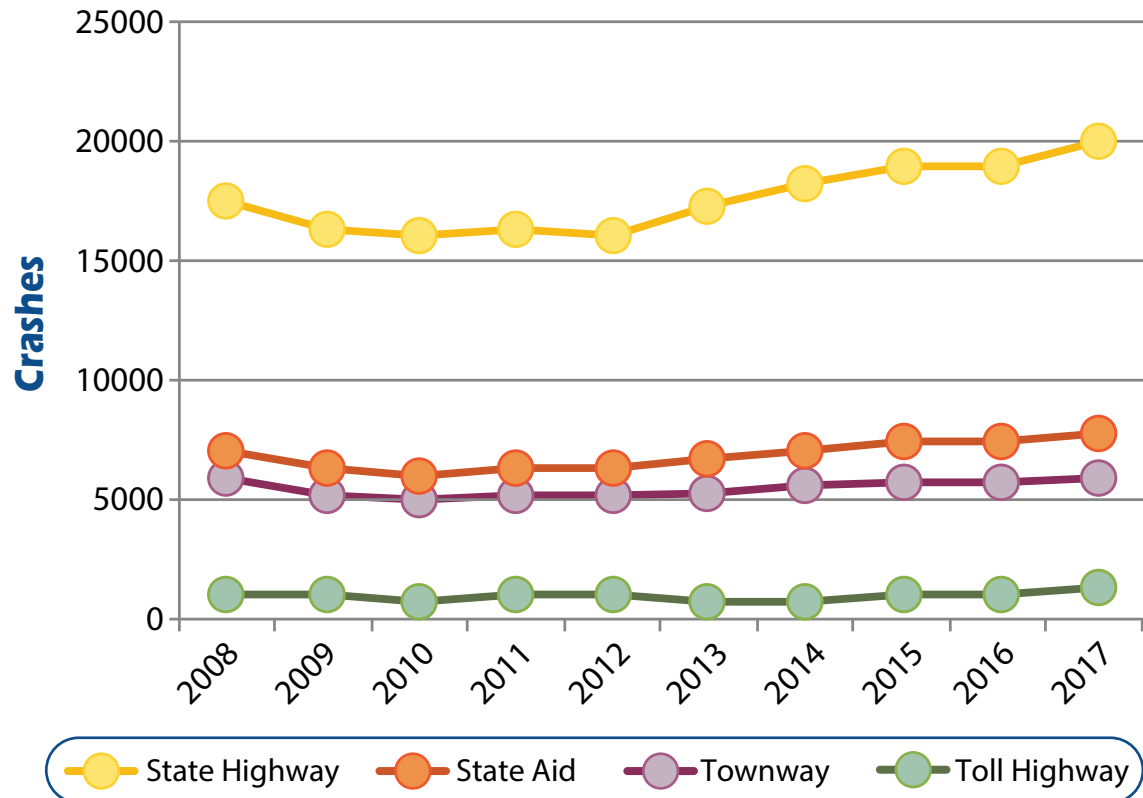
## SNAPSHOT LOOK AT FOCUS AREAS

Maine Top Crash Types Based on Annual Average of Last 5 Years' Experience (2013-2017)					
LEAD FOCUS AREAS	5 Year Average	5 Year Average	Severity Comparison	2008-2012 Experience	
	Annual Crashes (2013-2017)	Annual Fatalities (2013-2017)	Fatalities/1000 Crashes (2013-2017)	Annual Crashes (2008-2012)	Annual Fatalities (2008-2012)
<b>All Crash Types</b>	<b>32,713</b>	<b>153</b>	<b>4.7</b>	<b>29,166</b>	<b>155</b>
Lane Departure	9400.4	99.8	10.6	9,051.2	108.8
Speed	4457.0	50.2	11.3	4,989.6	67.4
Unbelted	-----	52.0	-----	-----	55.0
16-18 Year Old	2971.4	11.0	3.7	3,364.8	12.8
16-20 Year Old	5396.6	17.6	3.3	5,869.4	20.4
21-24 Year Old	4775.2	17.4	3.6	4,343.8	24.6
Alcohol	1269.6	46.2	36.4	1,343.0	38.8
*Distracted/Inattentive	3317.0	8.4	2.5	7,651.4	31.2
65-98 Year Old	6036.2	41.0	6.8	4,630.4	32.8
Motorcycles	566.6	20.4	36.0	598.6	19.4
Winter	6229.8	13.2	2.1	5,825.6	14.6
Intersections	9244.0	21.0	2.3	8,469.8	19.0
Large Trucks	551.6	7.4	13.4	528.8	8.6
Pedestrians	272.6	15.2	55.8	271.0	11.6
Moose	324.6	0.8	2.5	455.8	1.2
Bicycles	200.0	2.4	12.0	197.8	1.2

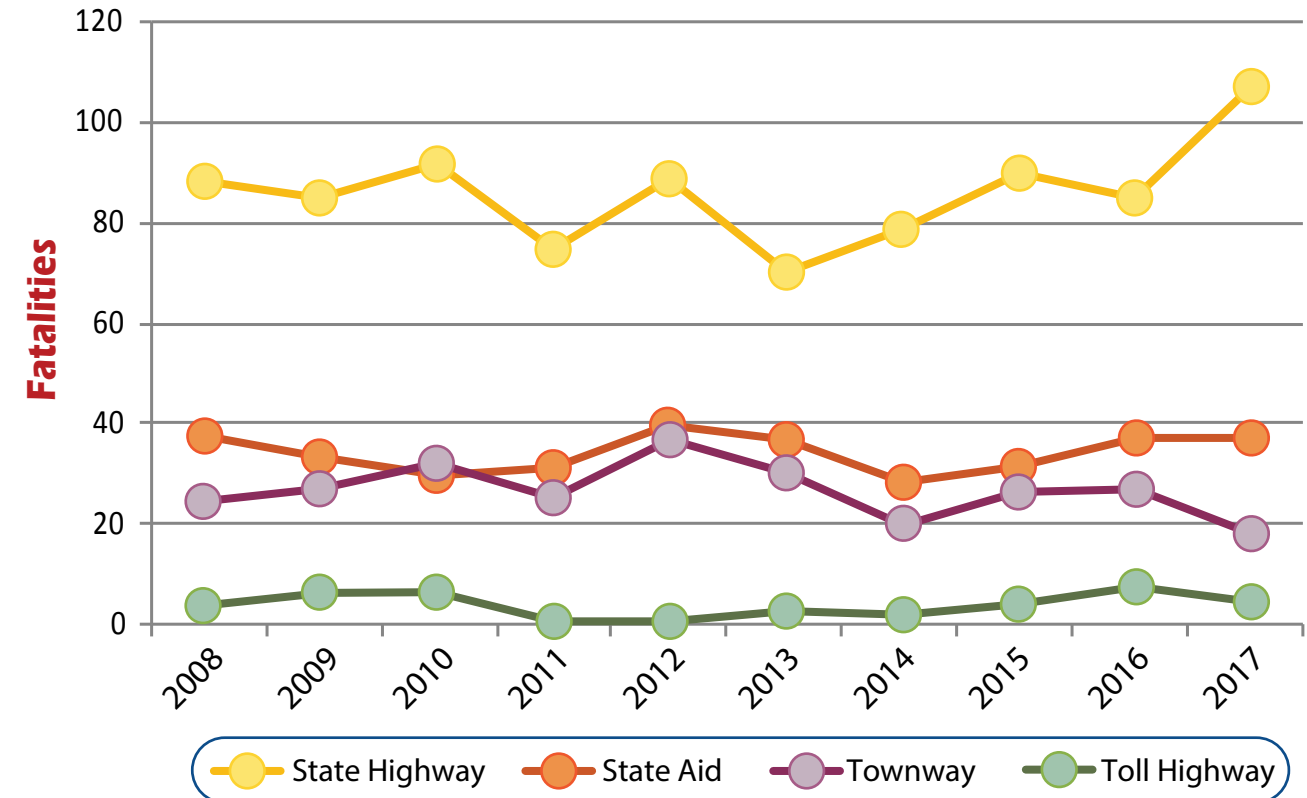
\*NOTE: The significant variance in this area is due to the 2011 Maine Crash Reporting System (MCRS) change in distracted driving reporting definition.

Miles of Road	
State Highway	4,083
State Aid	4,267
Townway	13,457
Toll Highway	112
( not including seasonal )	
100 Million Vehicle Miles Traveled	
State Highway	86.0
State Aid	28.6
Townway	18.5
Toll Highway	14.5

## Crashes by Road Jurisdiction



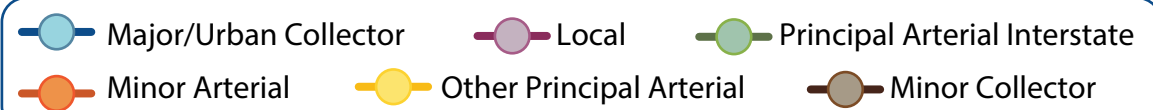
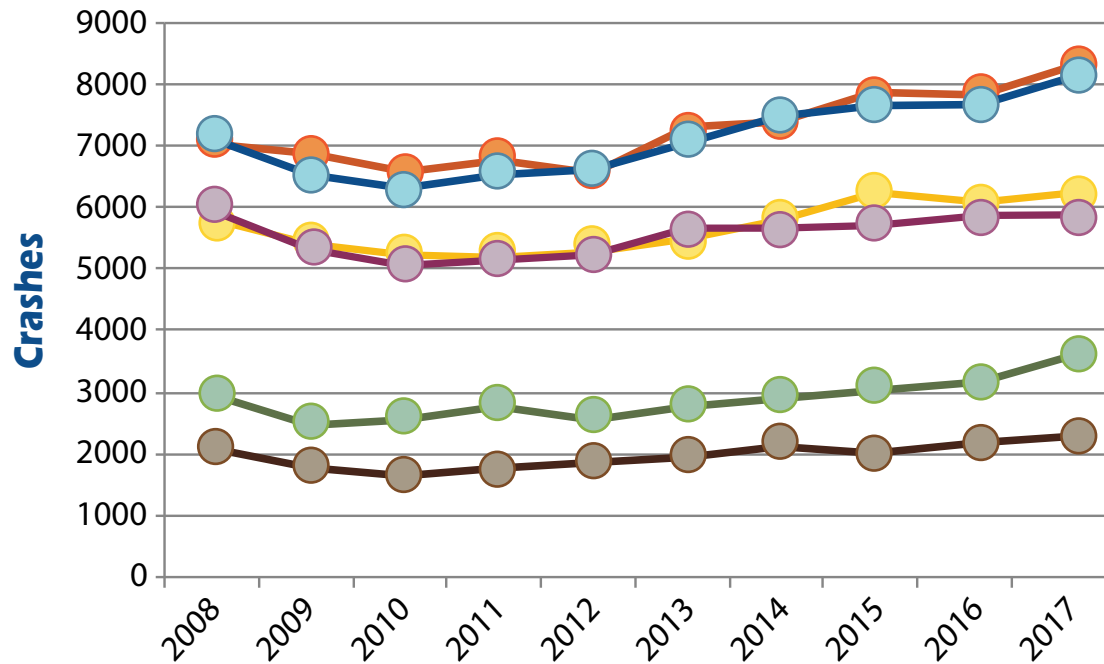
## Fatalities by Road Jurisdiction



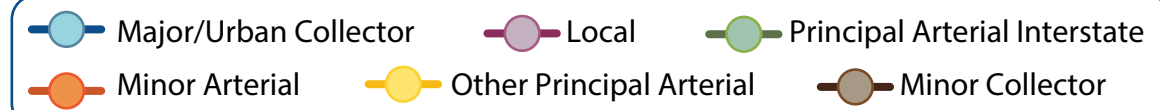
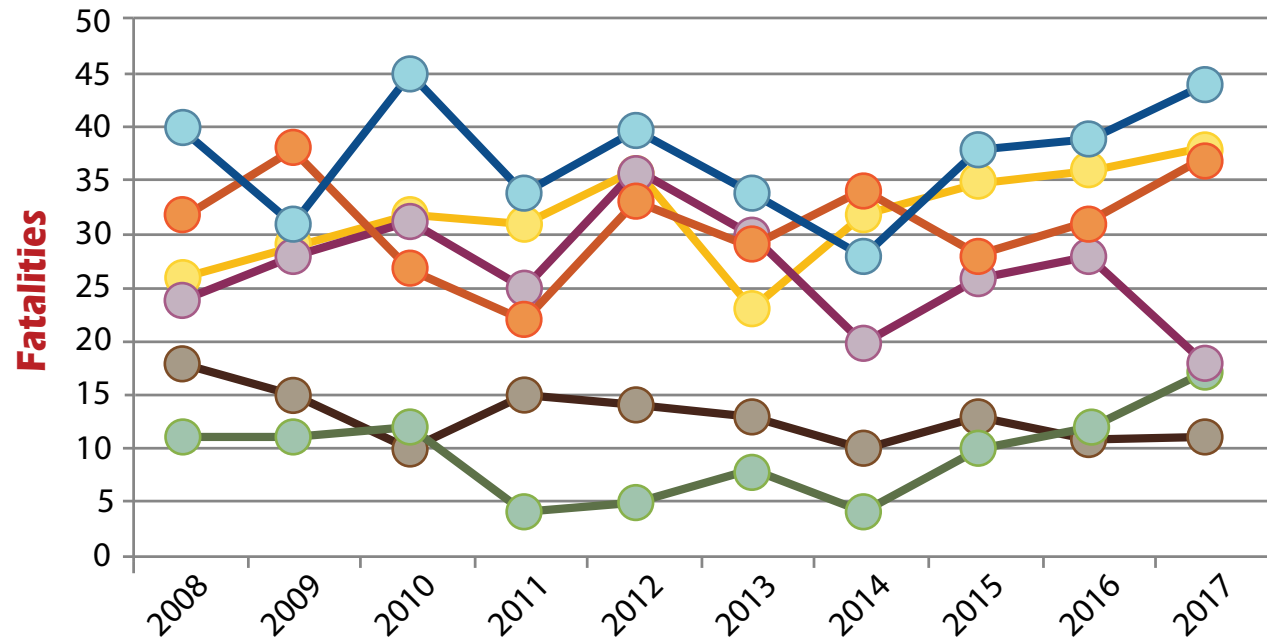


Miles of Road	
Major/Urban Collector	3,800
Minor Arterial	1,188
Local	13,456
Other Principal Arterial	923
Principal Arterial Interstate	365
Minor Collector	2,167
100 Million Vehicle Miles Traveled	
Major/Urban Collector	32.3
Minor Arterial	27.6
Local	18.5
Other Principal Arterial	25.7
Principal Arterial Interstate	33.2
Minor Collector	8.7

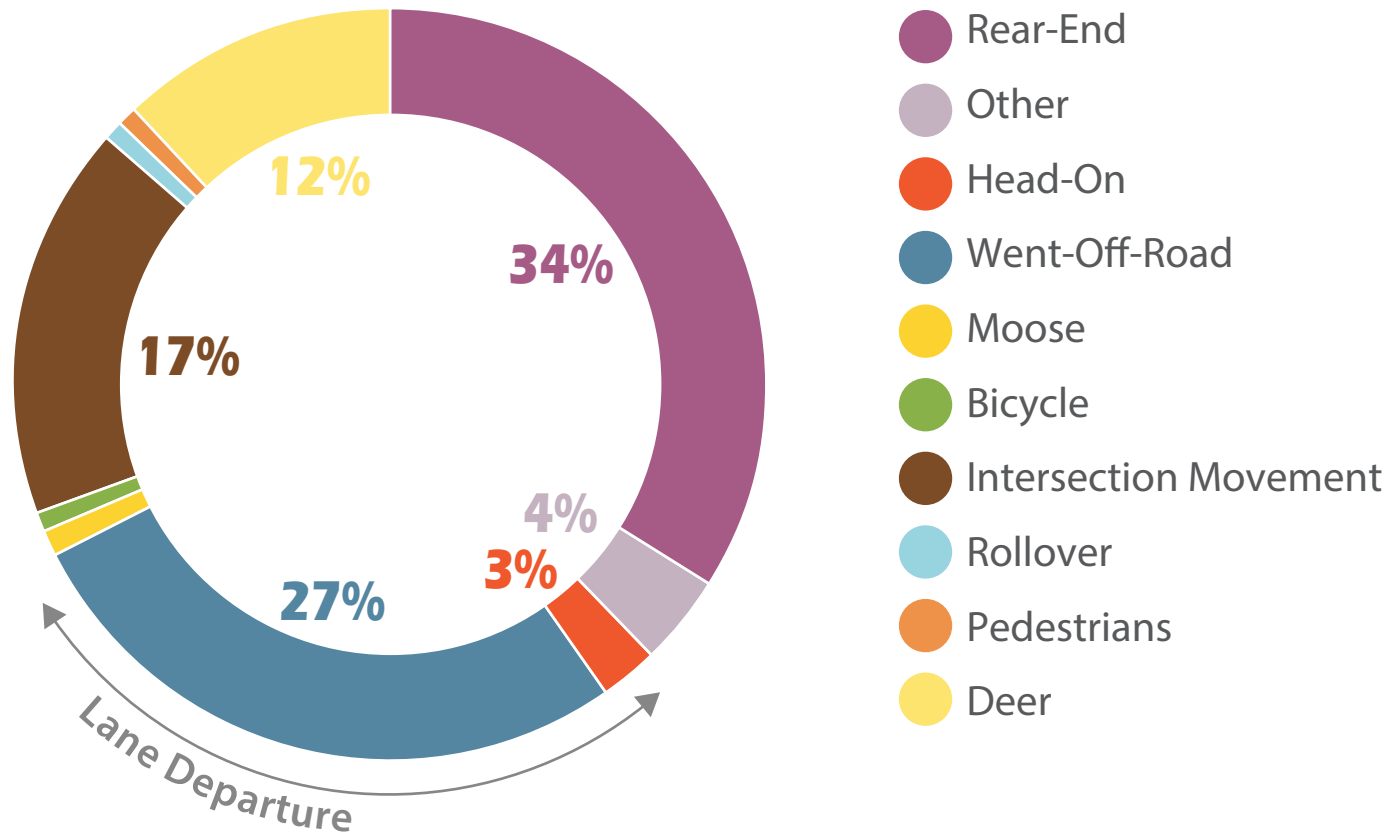
## Crashes by Federal Functional Class



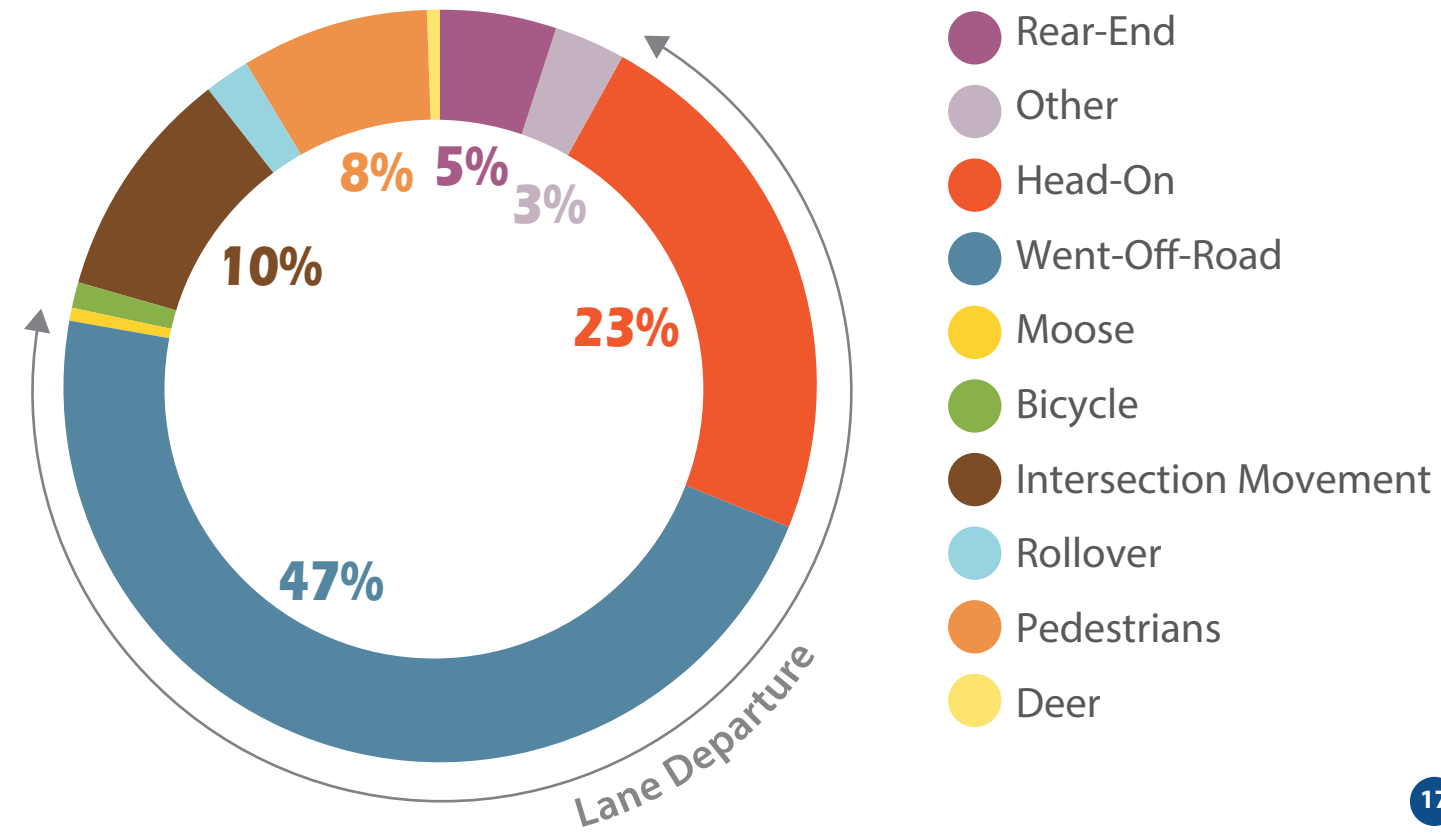
## Fatalities by Federal Functional Class



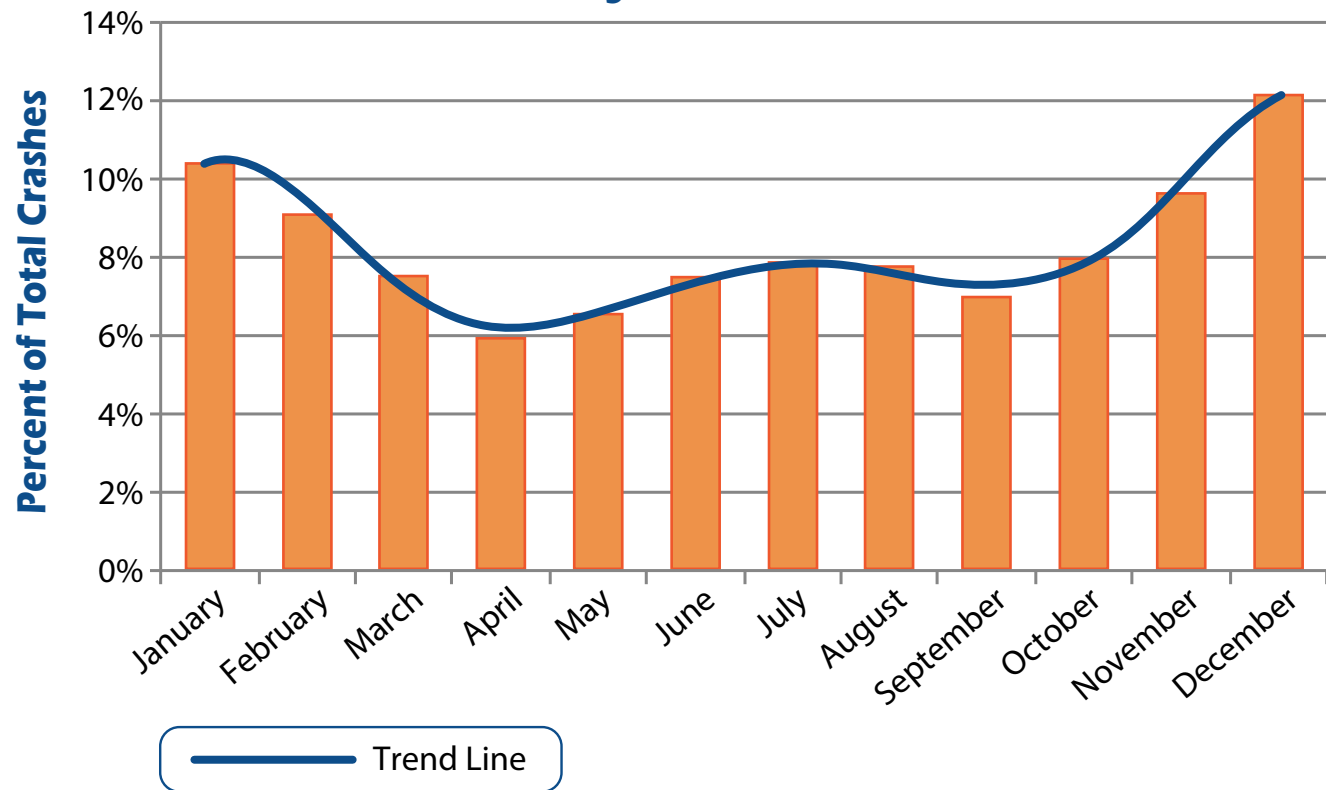
### Maine Crashes by Type (2008-2017)



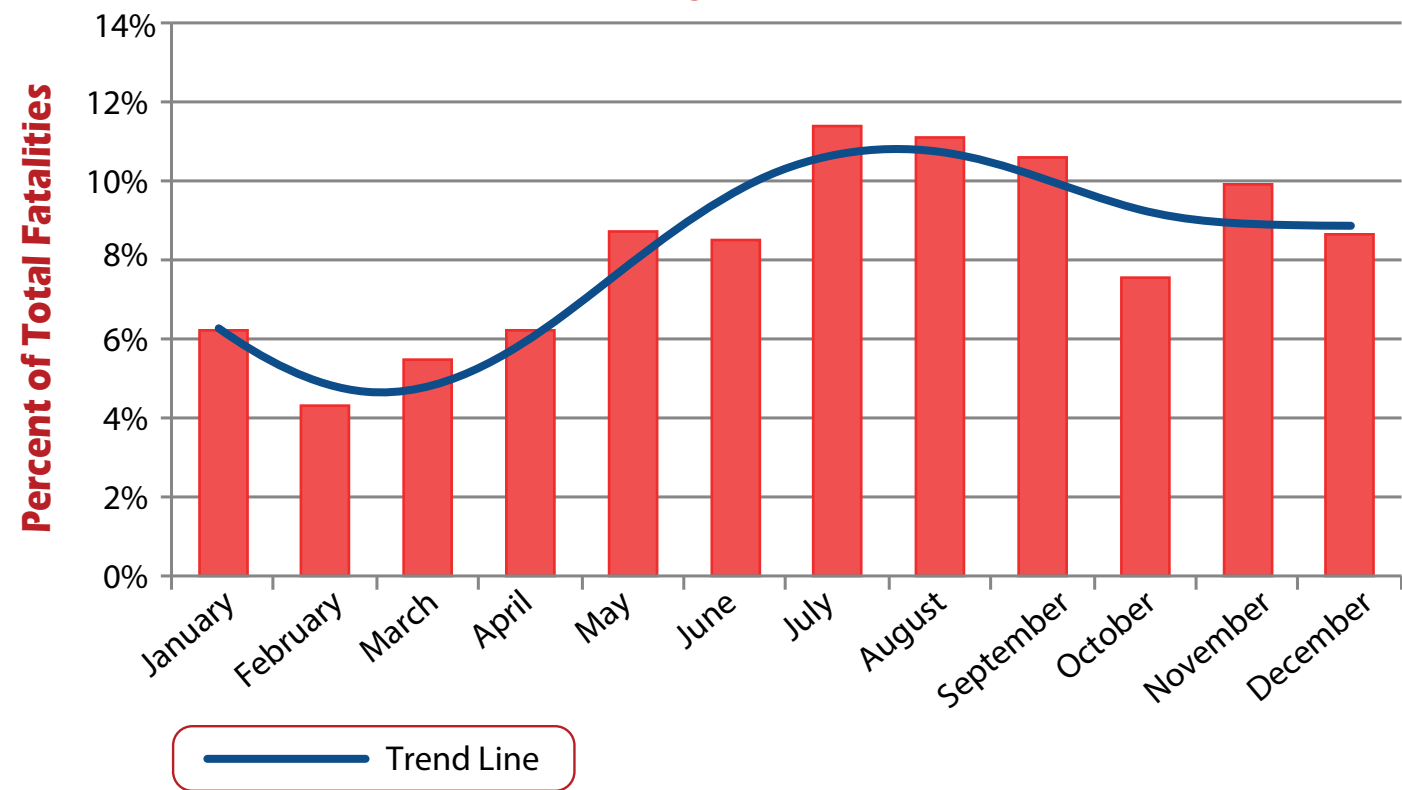
### Maine Fatalities by Type (2008-2017)



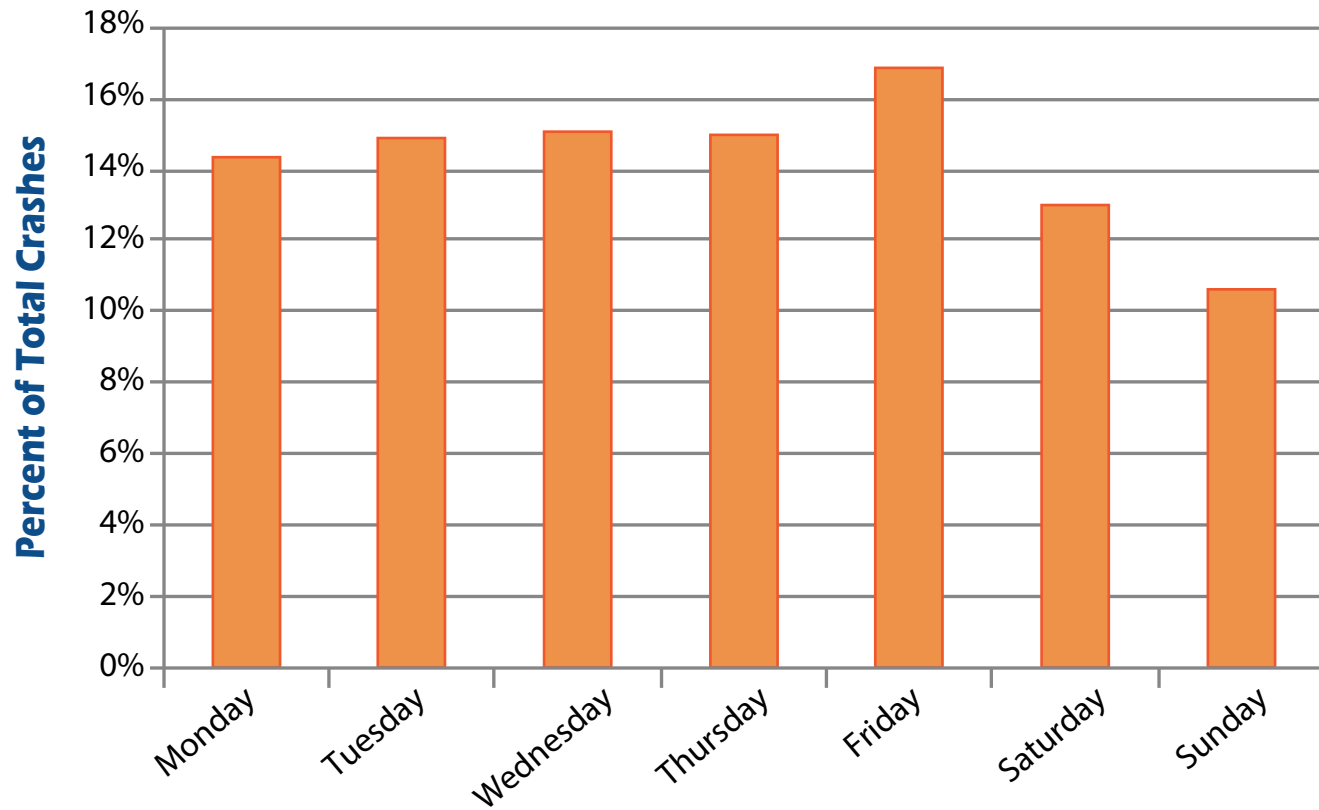
### Crashes by Month (2008-2017)



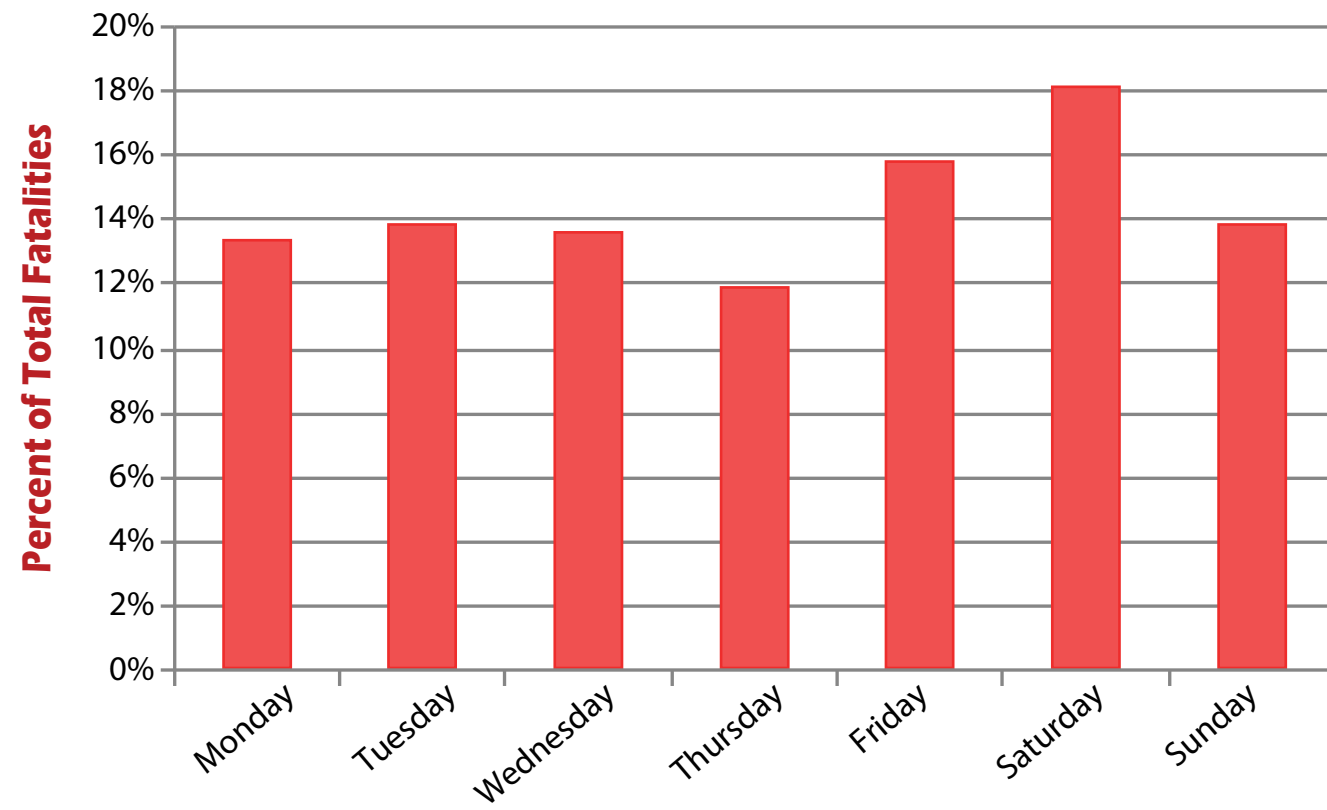
### Fatalities by Month (2008-2017)



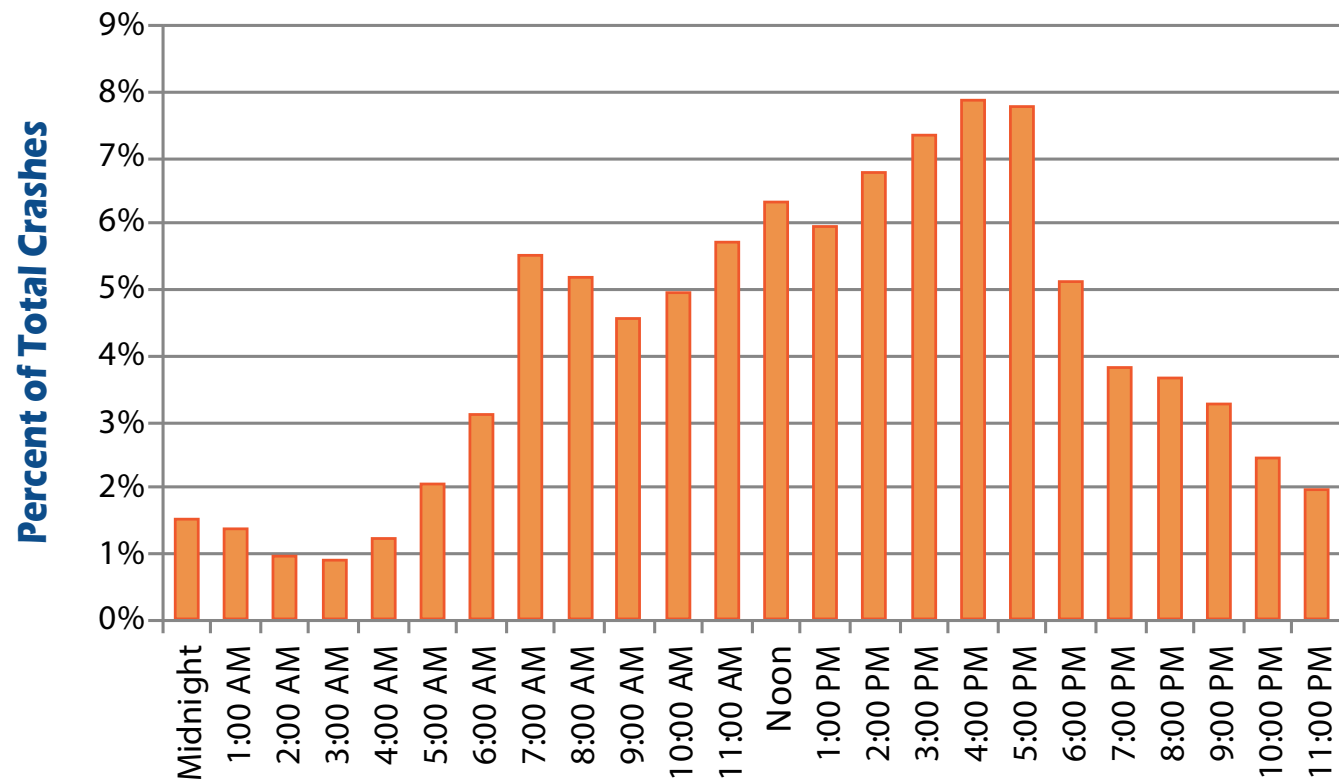
### Crashes by Day of the Week (2008-2017)



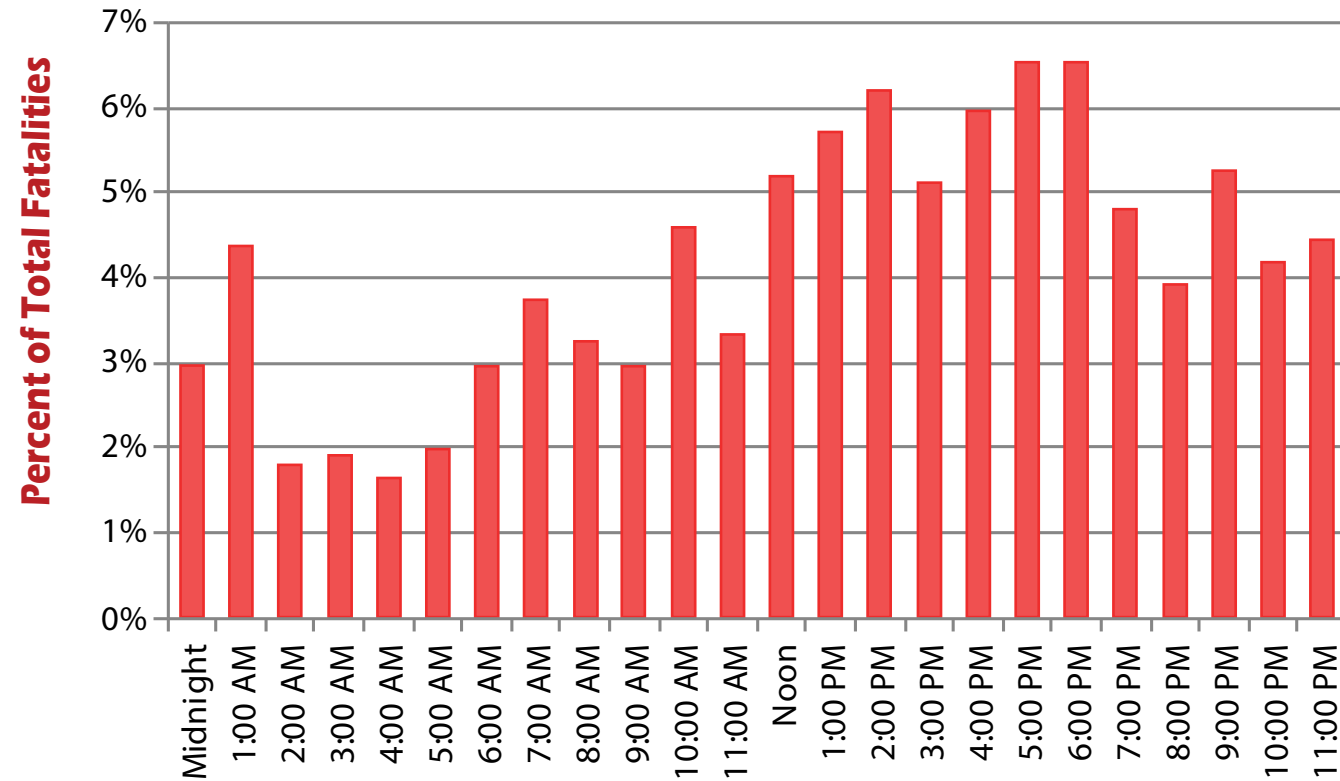
### Fatalities by Day of the Week (2008-2017)



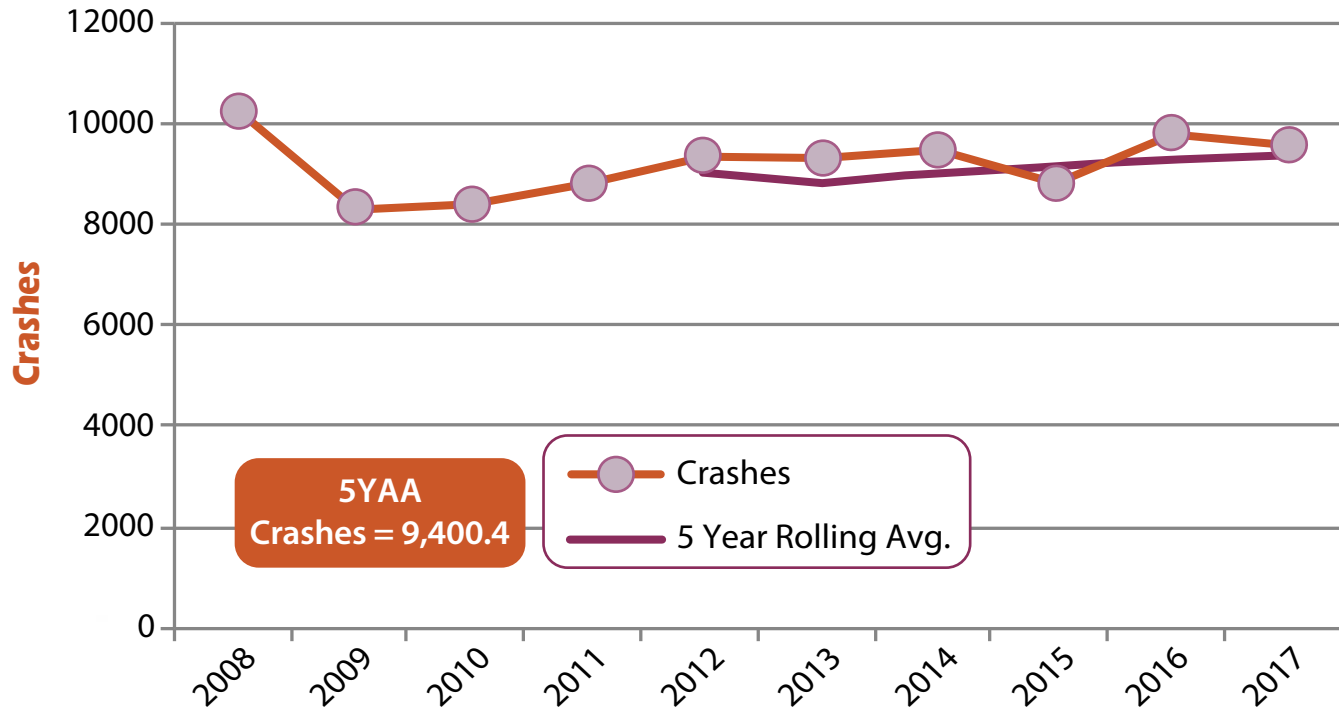
### Crashes by Time of Day (2008-2017)



### Fatalities by Time of Day (2008-2017)

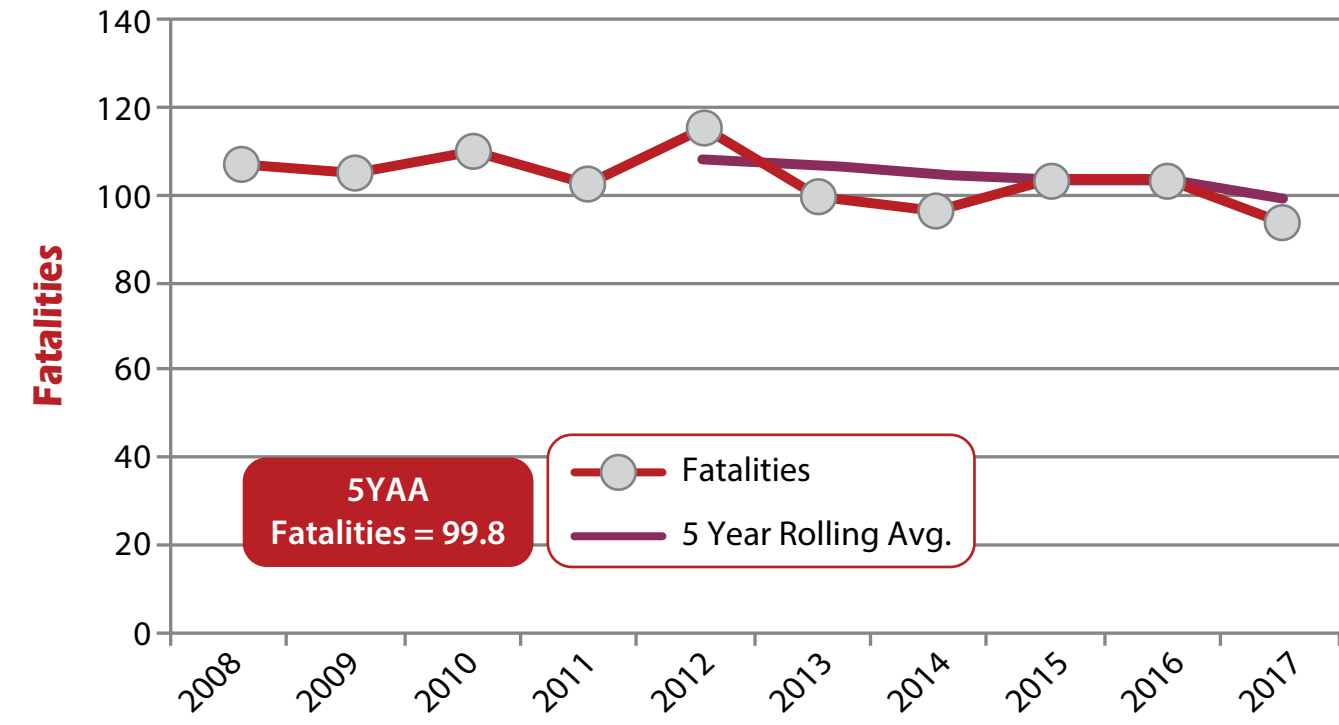


### Lane Departure Crashes

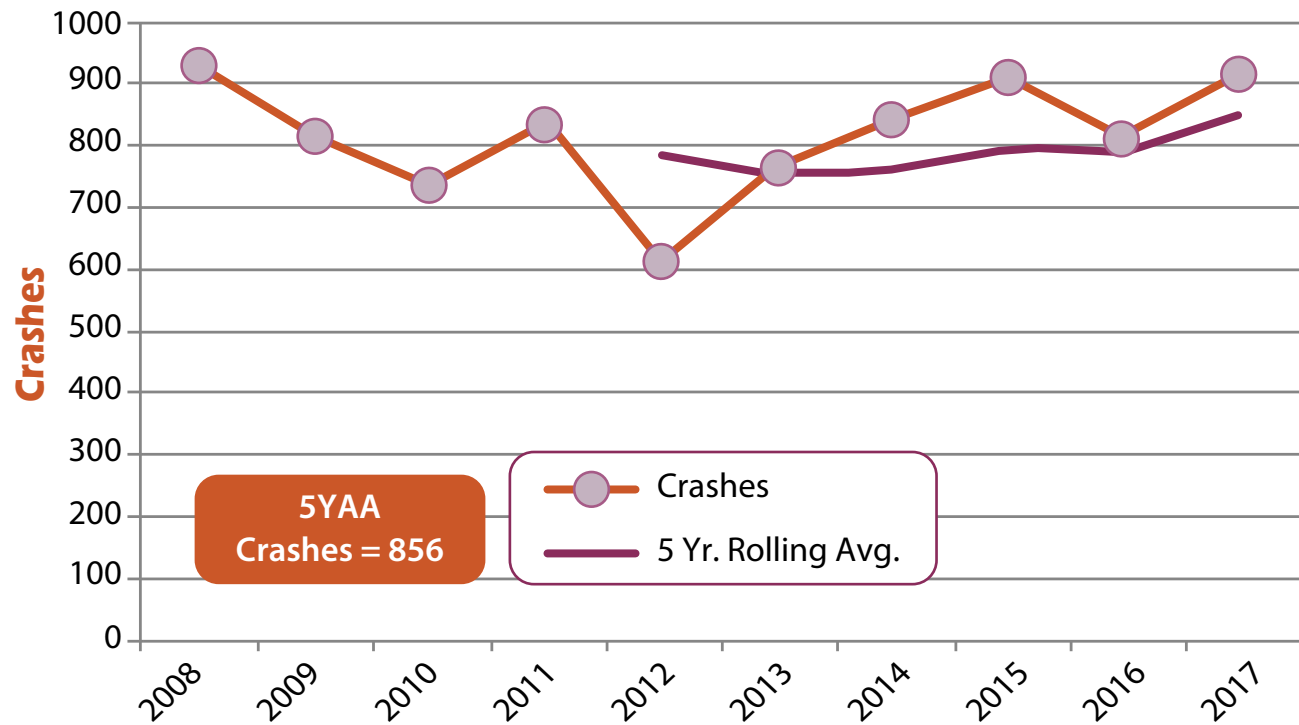


Lane departure crashes result when a vehicle leaves its designated lane of travel and veers left or right. Two crash types will normally result- either head-on or went-off-road. Those two crash types are further detailed on the following pages.

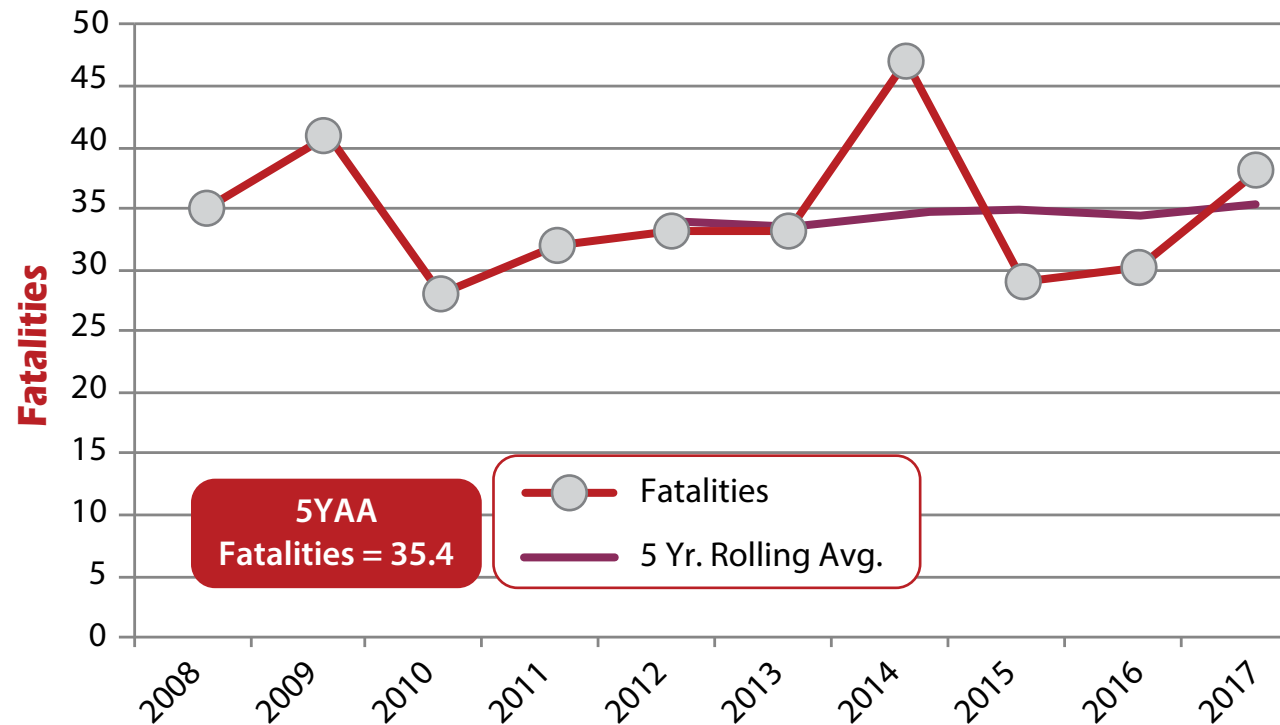
### Lane Departure Fatalities



## Head-On Crashes

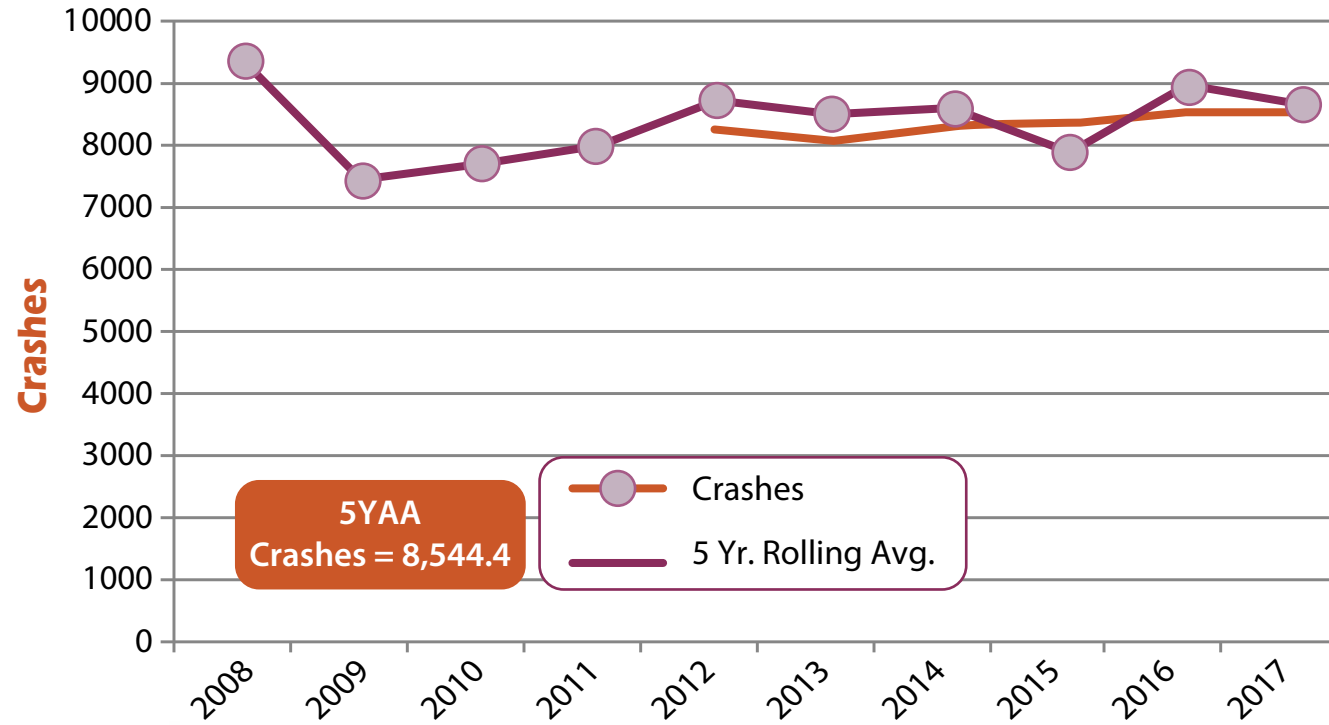


## Head-On Fatalities



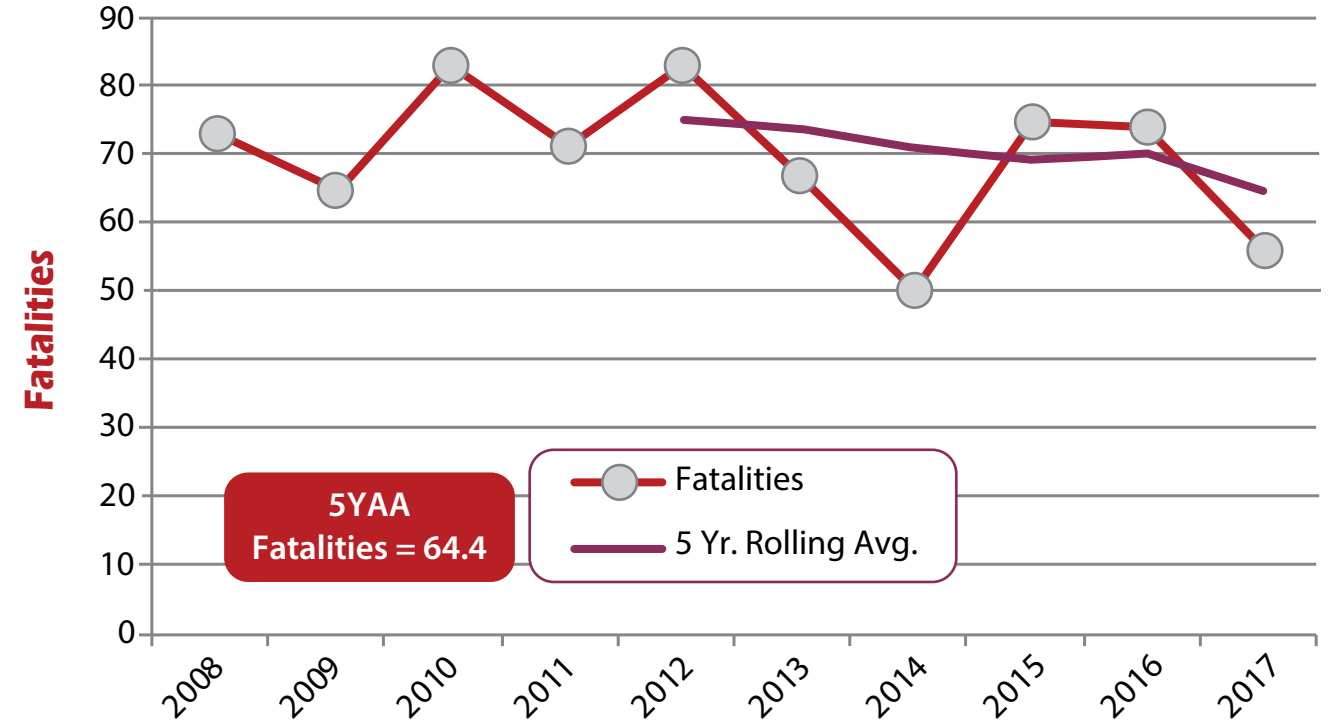
Head-on crashes are much more severe than went-off-road. There is an average of 42 fatalities/1,000 crashes for head-on compared to 8.3 fatalities/1,000 crashes in went-off-road crashes.

## Went-Off-Road Crashes



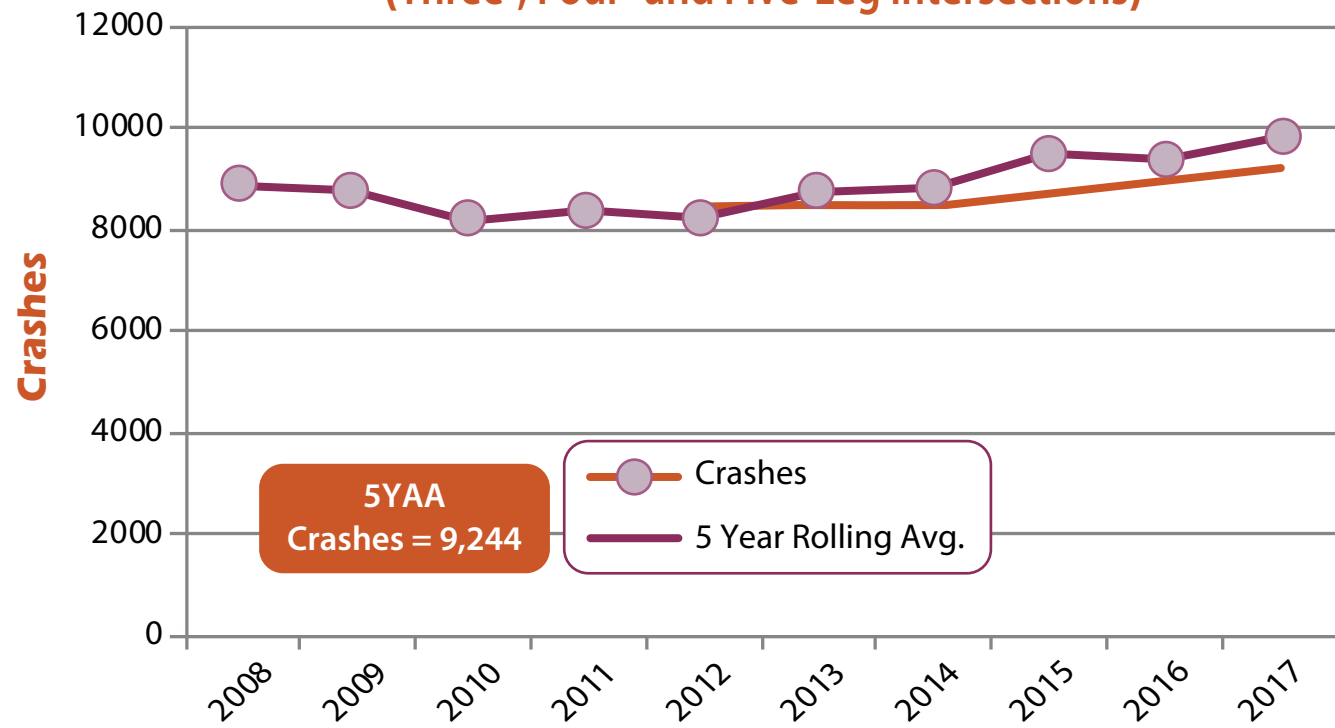
Went-off-road crashes are more frequent than head-on, occurring 10 times more often.

## Went-Off-Road Fatalities

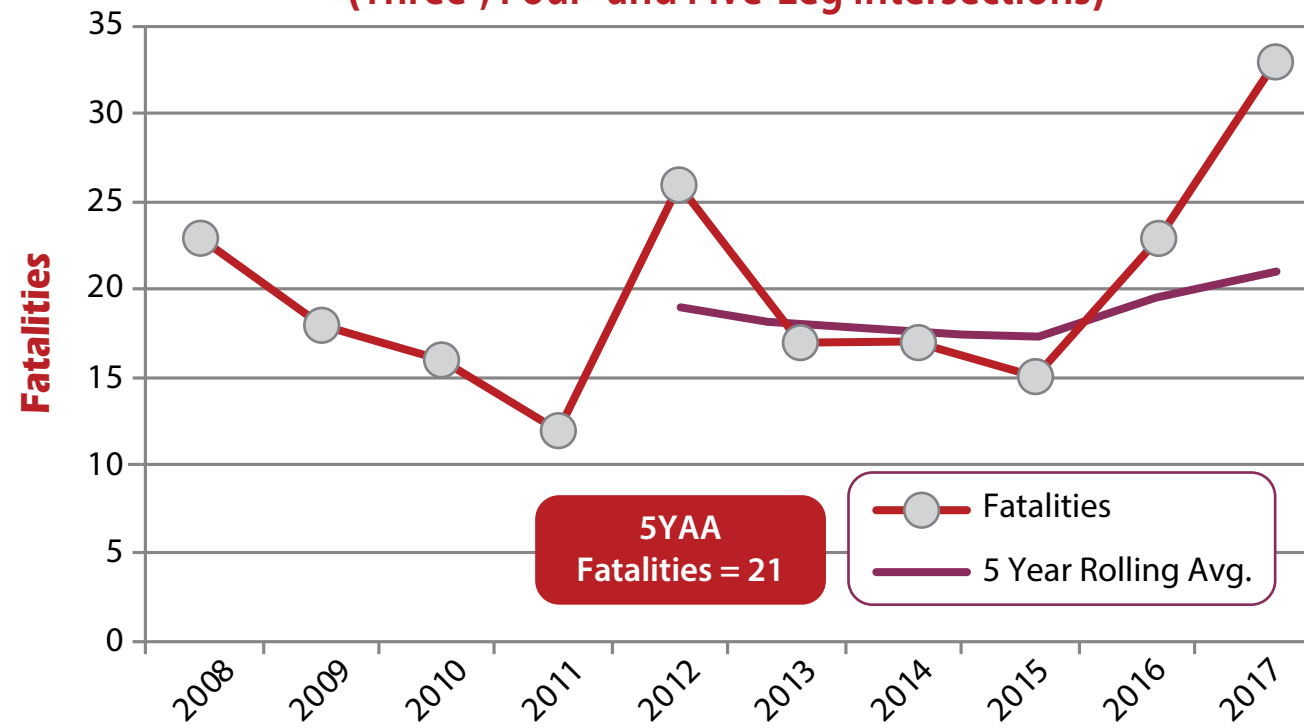




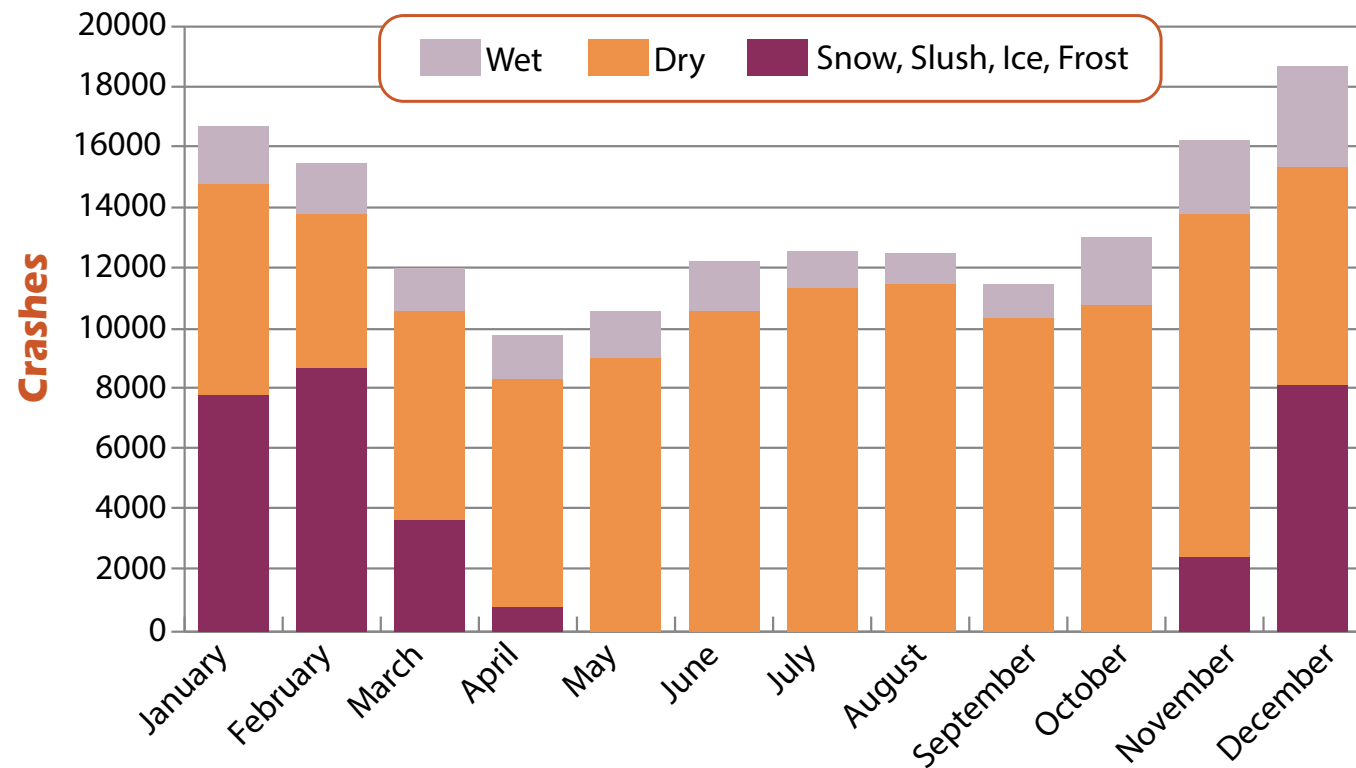
## Intersection Crashes (Three-, Four- and Five-Leg Intersections)



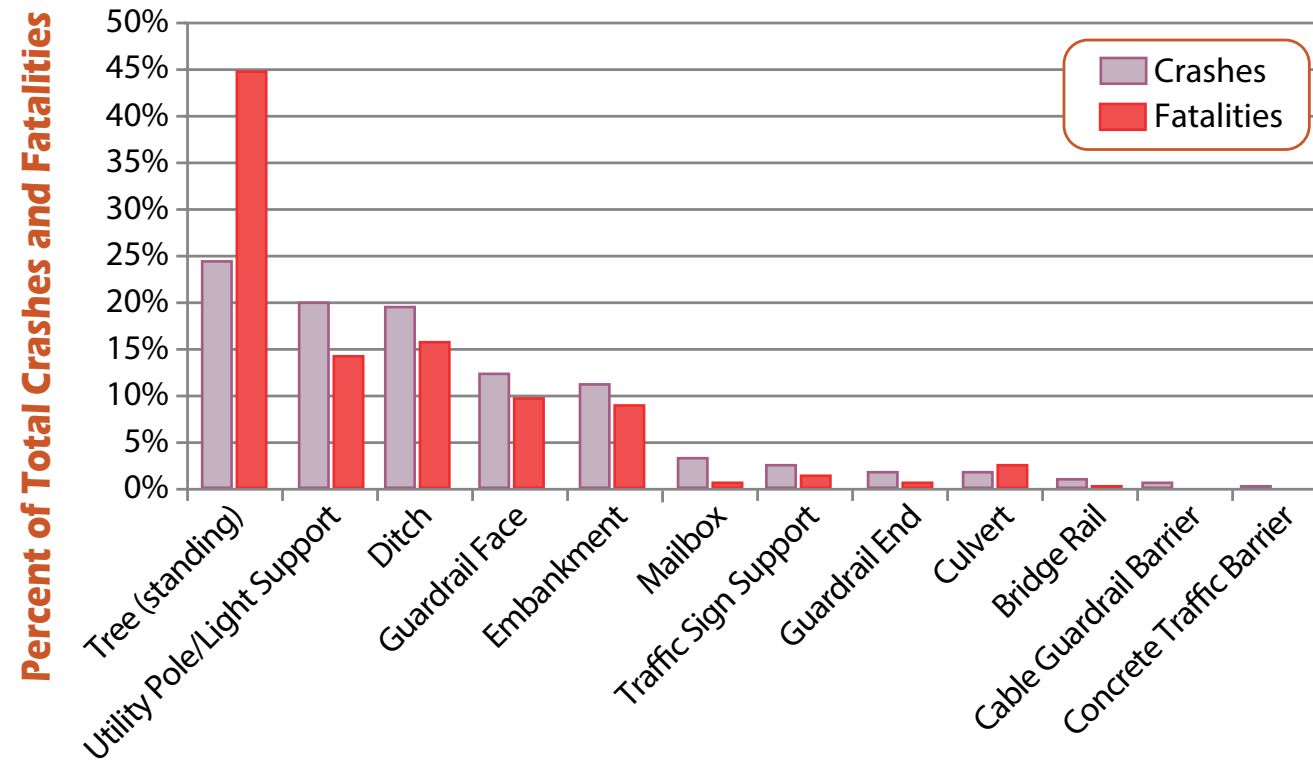
## Intersection Fatalities (Three-, Four- and Five-Leg Intersections)



## Maine Crashes by Road Surface Condition (2013-2017)

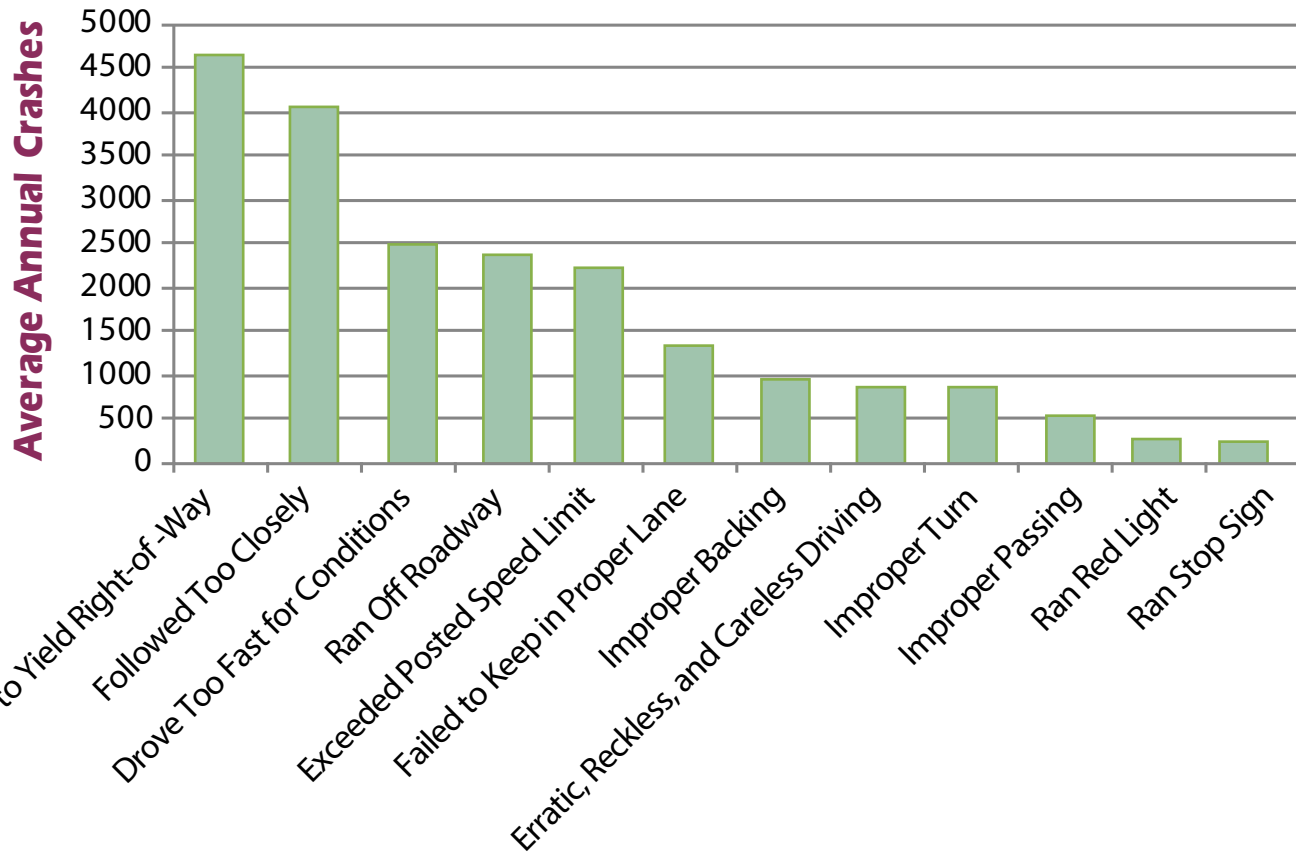


## Top Fixed Objects Struck (2013-2017)

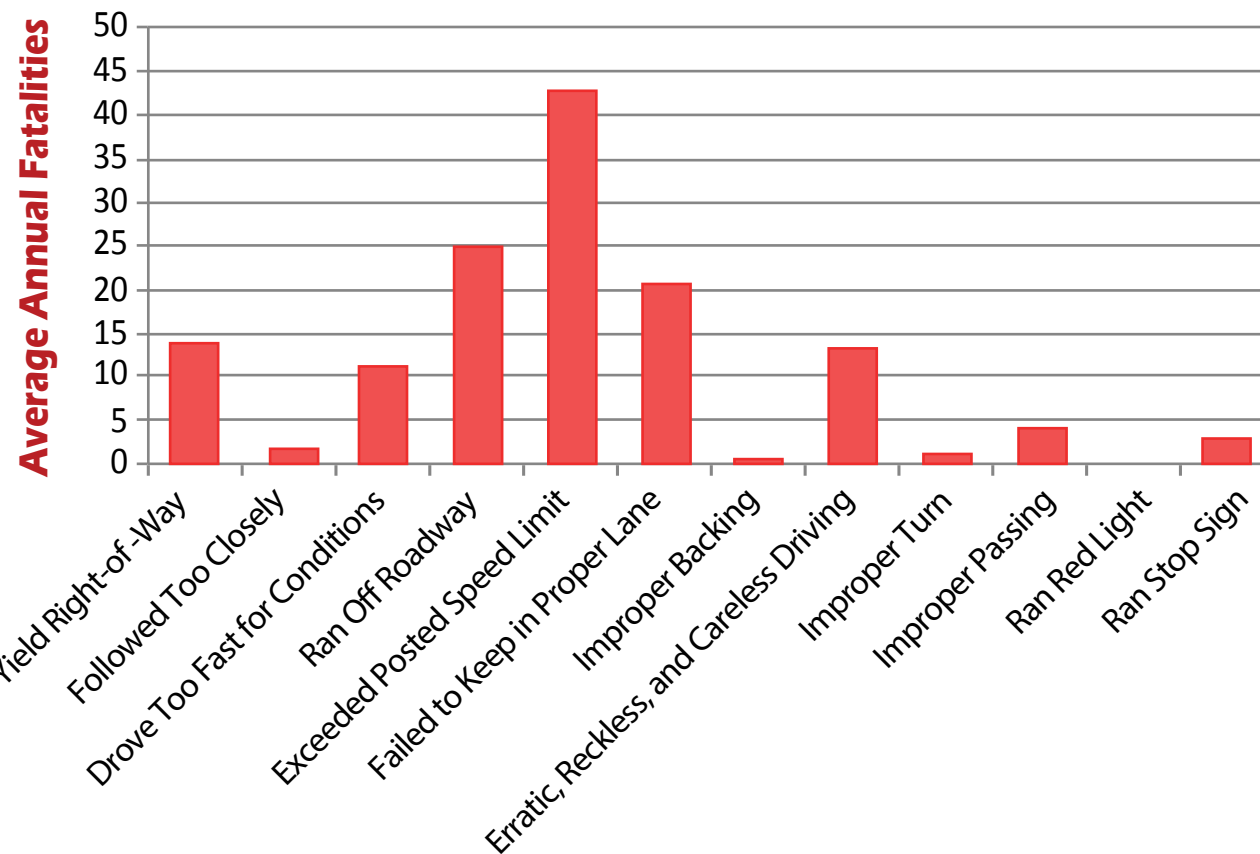


Fixed objects struck data, as currently defined, has only been available since 2012.

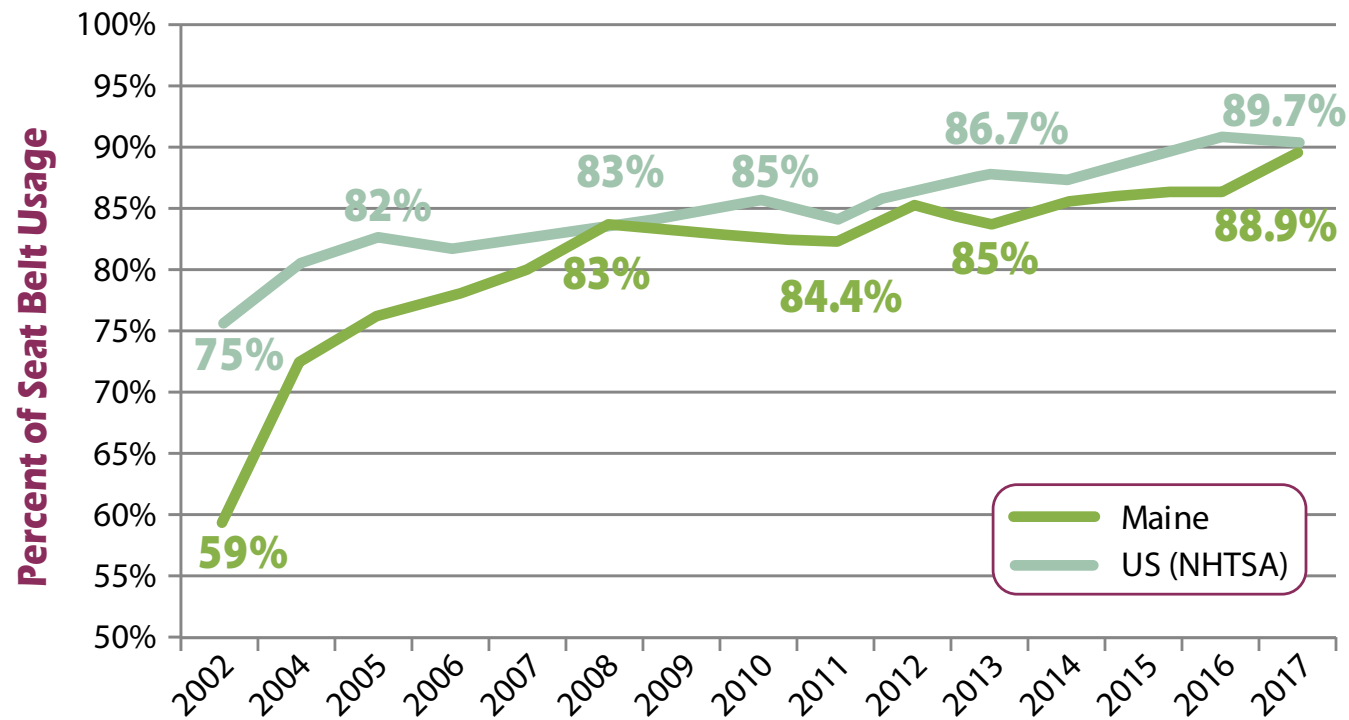
## Top Driver Actions in Crashes (2008-2017)



## Top Driver Actions in Fatal Crashes (2008-2017)

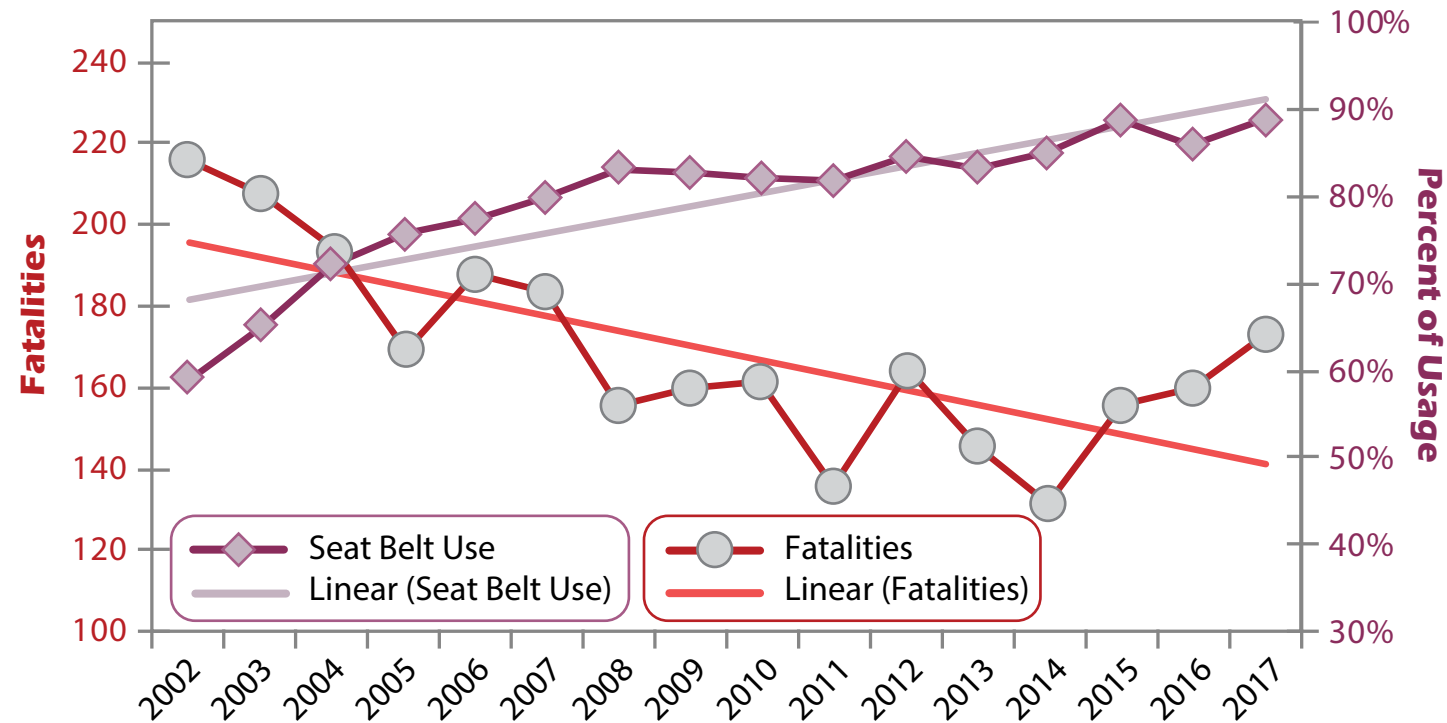


## Seat Belt Usage – Maine and United States

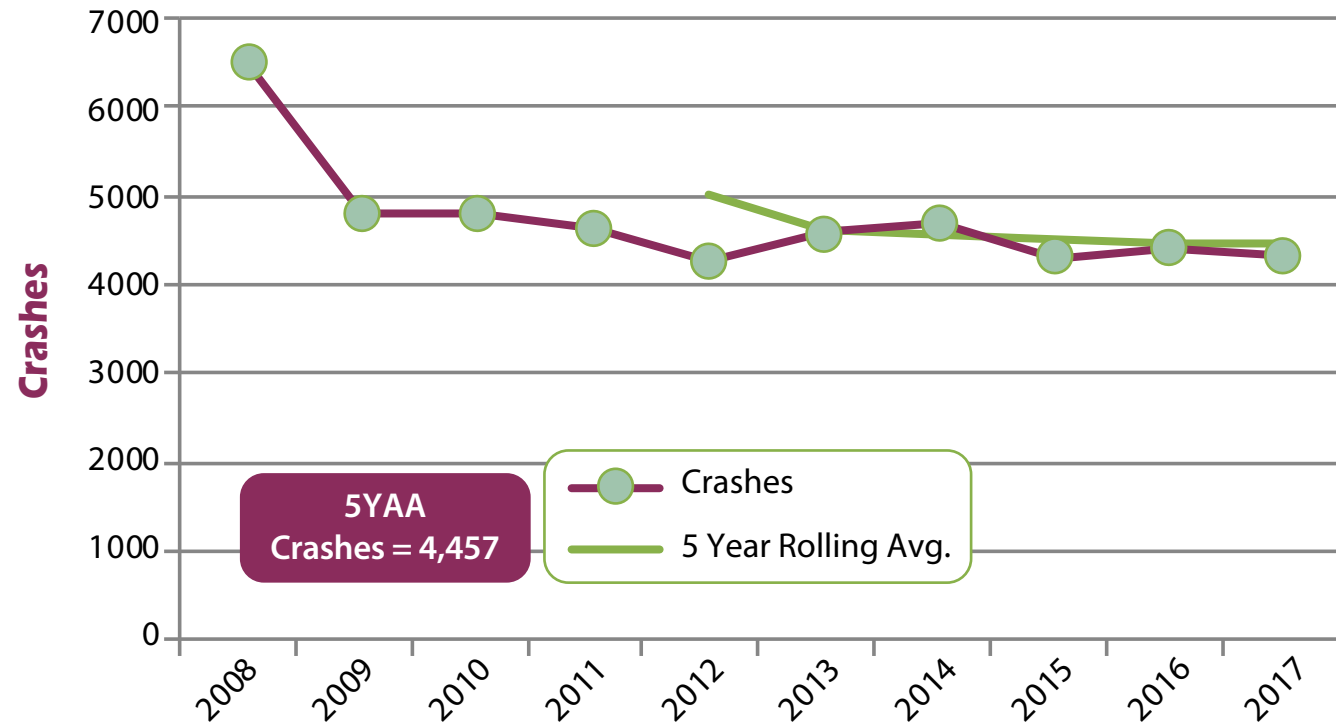


US usage numbers are from National Highway Traffic Safety Administration (NHTSA)  
Maine seat belt usage numbers are developed by local observational studies.

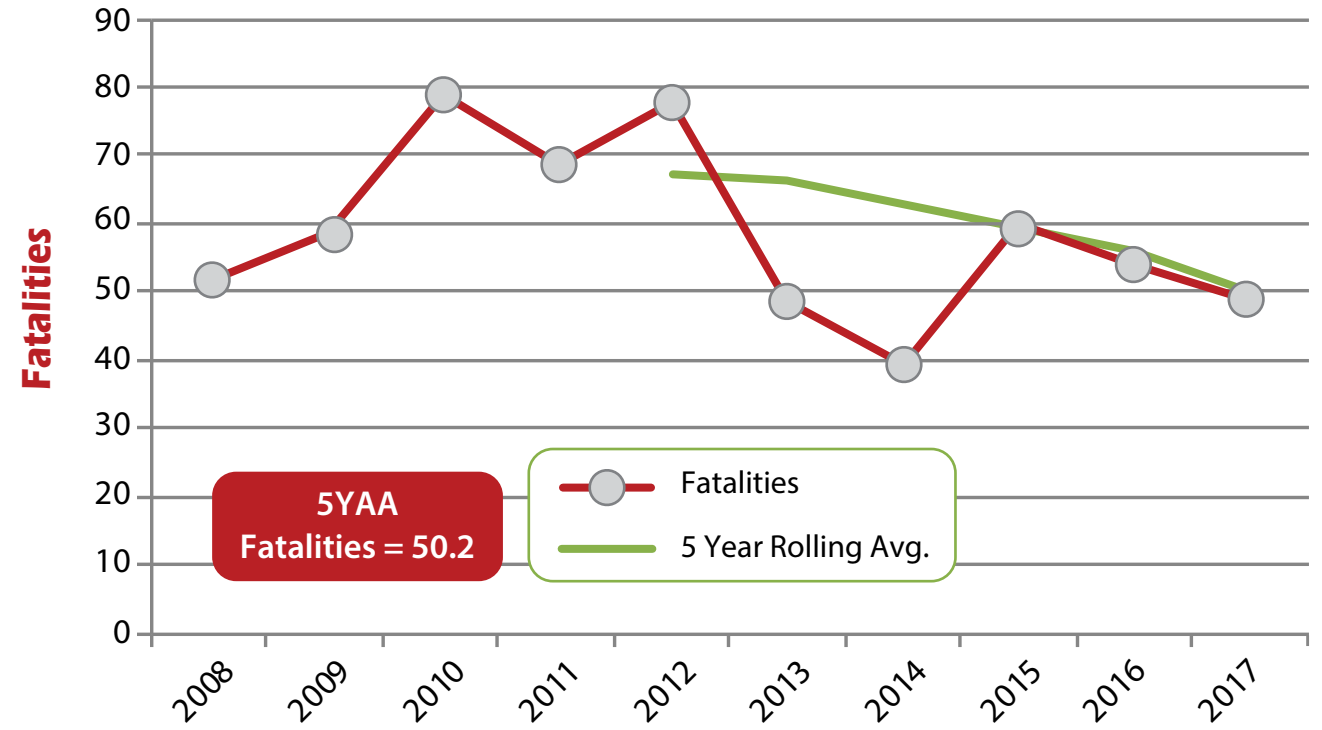
## Maine Fatalities vs. Seat Belt Usage



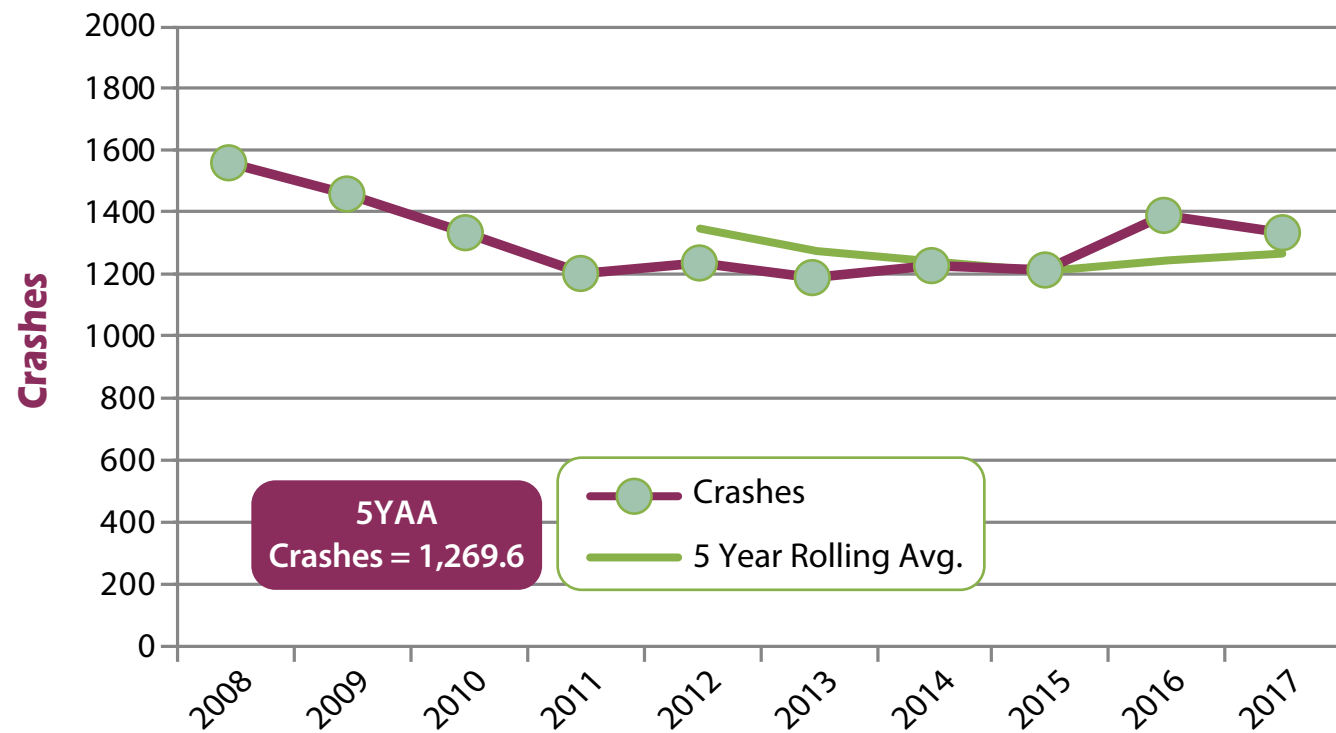
## Illegal/Unsafe Speed Crashes



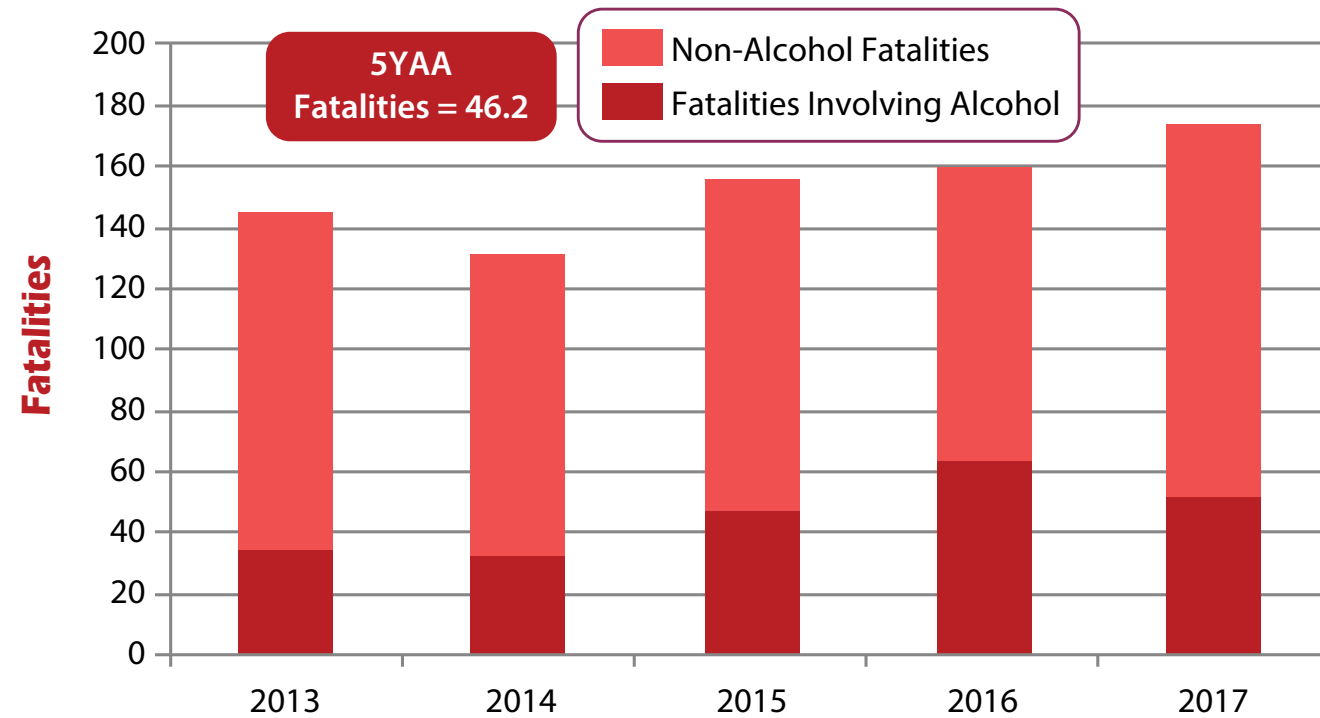
## Illegal/Unsafe Speed Fatalities



## Impaired Crashes



## Alcohol and Non-Alcohol Related Fatalities

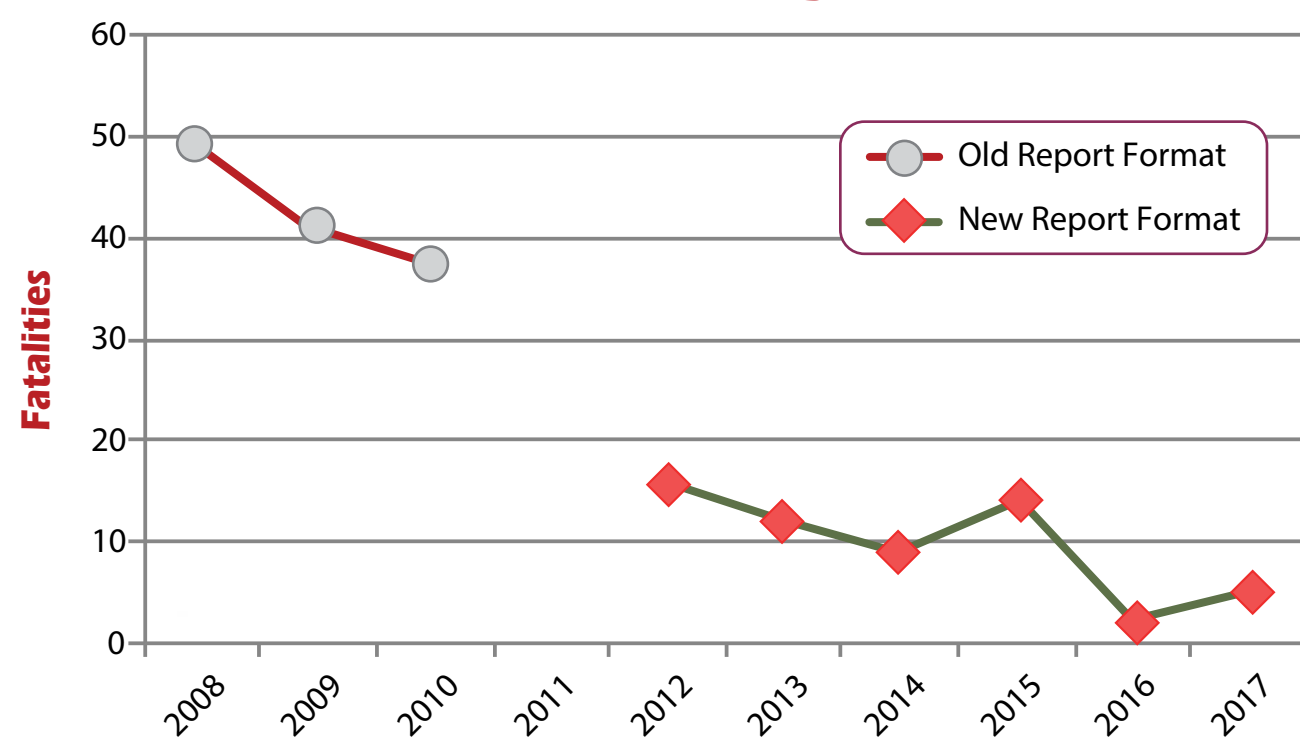


## Distracted Driving Crashes



Prior to 2011, police crash reports captured general distracted/inattentive driving factors, and 10,000+ distraction/inattention related crashes were reported annually. During 2011, Maine switched to an updated crash report in line with national guidance that now reports on specific distracted practices, but does not include generic inattention, greatly reducing the reported number of distracted crashes. Distracted driving behaviors are usually self-reported. In 2016, Maine's Crash Report added a 'Distracted by Unknown Cause' element.

## Distracted Driving Fatalities



### Crashes Involving Drivers with Suspended Licenses

Year	All Crashes	Suspended Crashes	% of Suspended Crashes	All Fatalities	Suspended Fatalities	% of Suspended Fatalities
2003	35,208	795	2.26%	207	9	4.35%
2004	35,012	854	2.44%	194	20	10.31%
2005	35,046	707	2.02%	169	17	10.06%
2006	32,065	679	2.12%	188	18	9.57%
2007	33,385	789	2.36%	183	16	8.74%
2008	31,778	584	1.84%	155	4	2.58%
2009	28,980	613	2.12%	159	14	8.81%
2010	27,891	581	2.08%	161	8	4.97%
2011	28,653	577	2.01%	136	11	8.09%
2012	28,523	662	2.32%	164	16	9.76%
2013	30,506	630	2.07%	145	19	13.10%
2014	31,873	667	2.09%	131	14	10.69%
2015	32,882	681	2.07%	156	15	9.62%
2016	33,289	757	2.27%	160	15	9.38%
2017	34,967	743	2.12%	173	10	5.78%
<b>5 Year Annual Average</b>		<b>695.6</b>	<b>2.11%</b>		<b>14.6</b>	<b>9.91%</b>

### Fatalities by Selected Categories by Year (2013-2017)

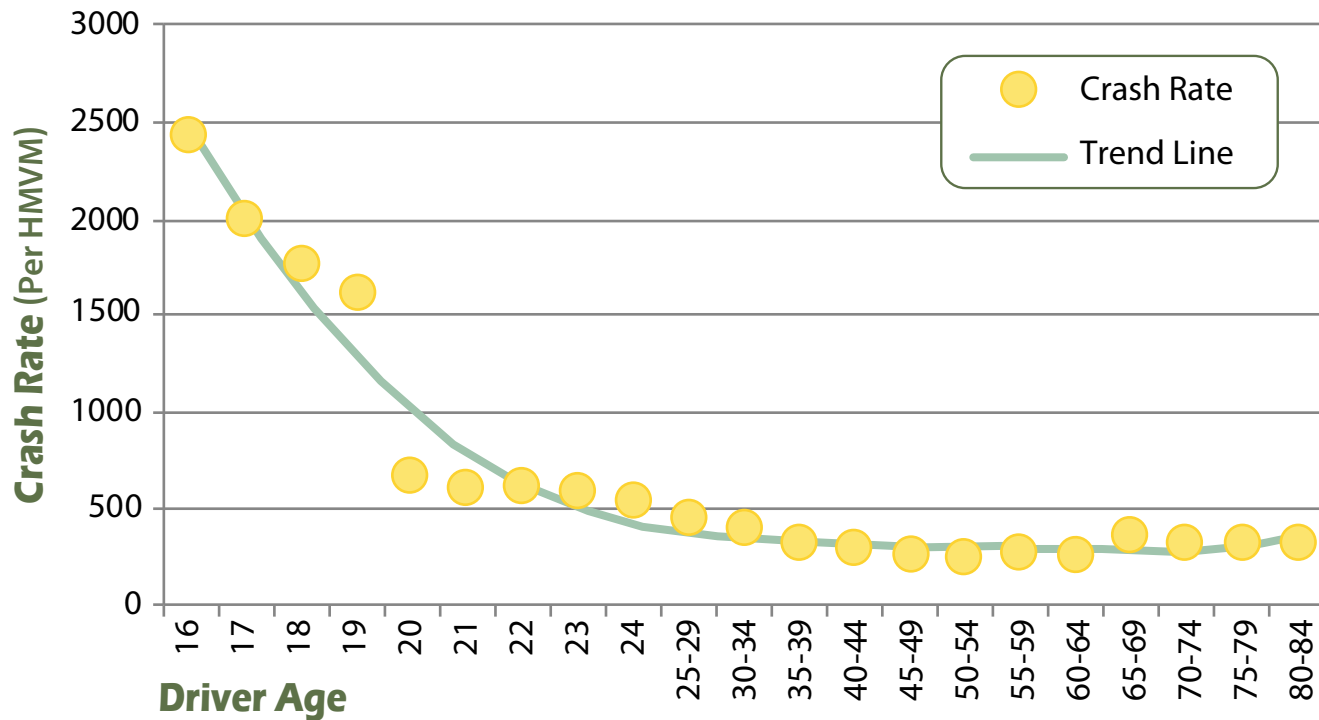
Year	Pedestrian	Bicycle	Motorcycle	Impaired	% Impaired	Total Fatalities
2013	11	4	14	35	24.1%	145
2014	9	2	10	33	25.2%	131
2015	19	0	32	47	30.1%	156
2016	17	4	19	64	40.0%	160
2017	20	2	24	52	30.1%	173
<b>5 Year Avg.</b>	<b>15.2</b>	<b>2.4</b>	<b>19.8</b>	<b>46.2</b>	<b>30.2%</b>	<b>153</b>

This table shows the relationship between select classifications of fatalities compared with the total number of fatalities. The motorcycle category does not include moped or dirt bike involved fatalities.



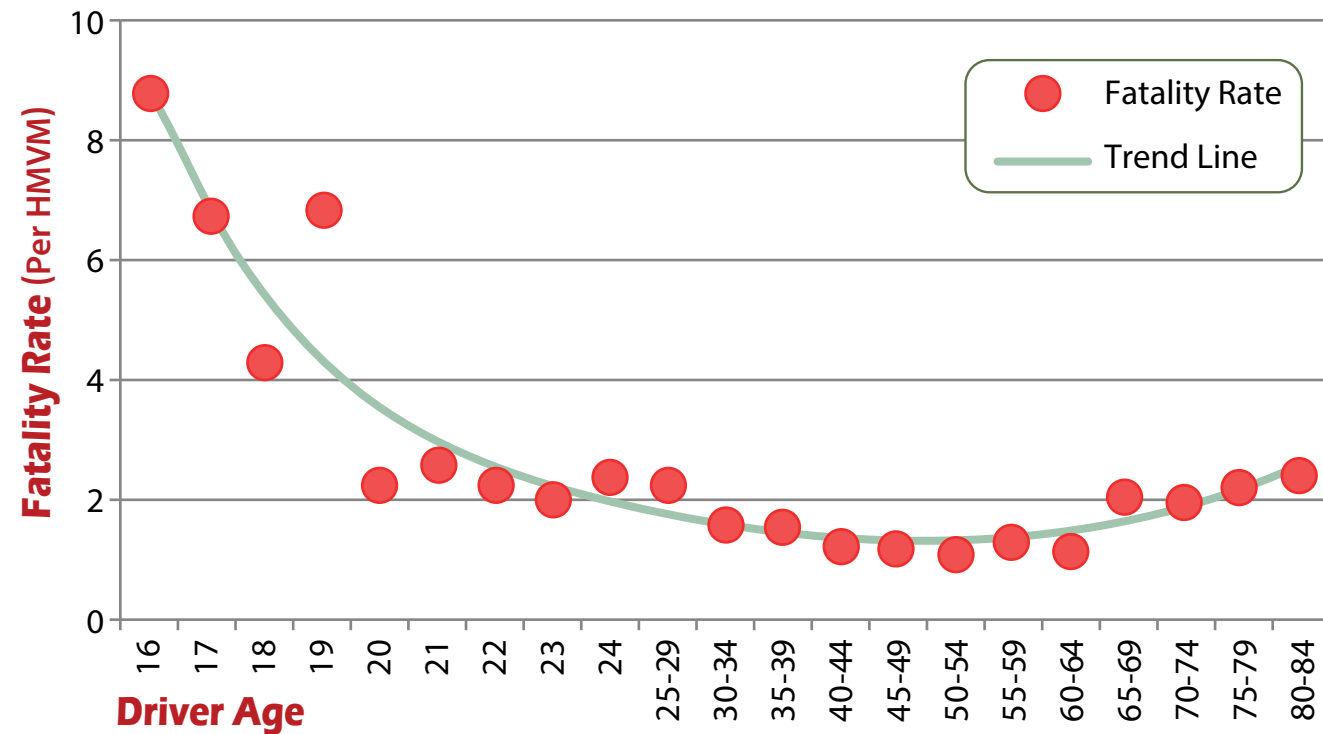


## Crash Rates by Driver Age (2013-2017)



The rates on the next two pages are estimates, based on Maine's licensed driver population and national estimates on annual mileage driven by age group. Any crash-involved driver in each age group is counted in this data, regardless of fault.

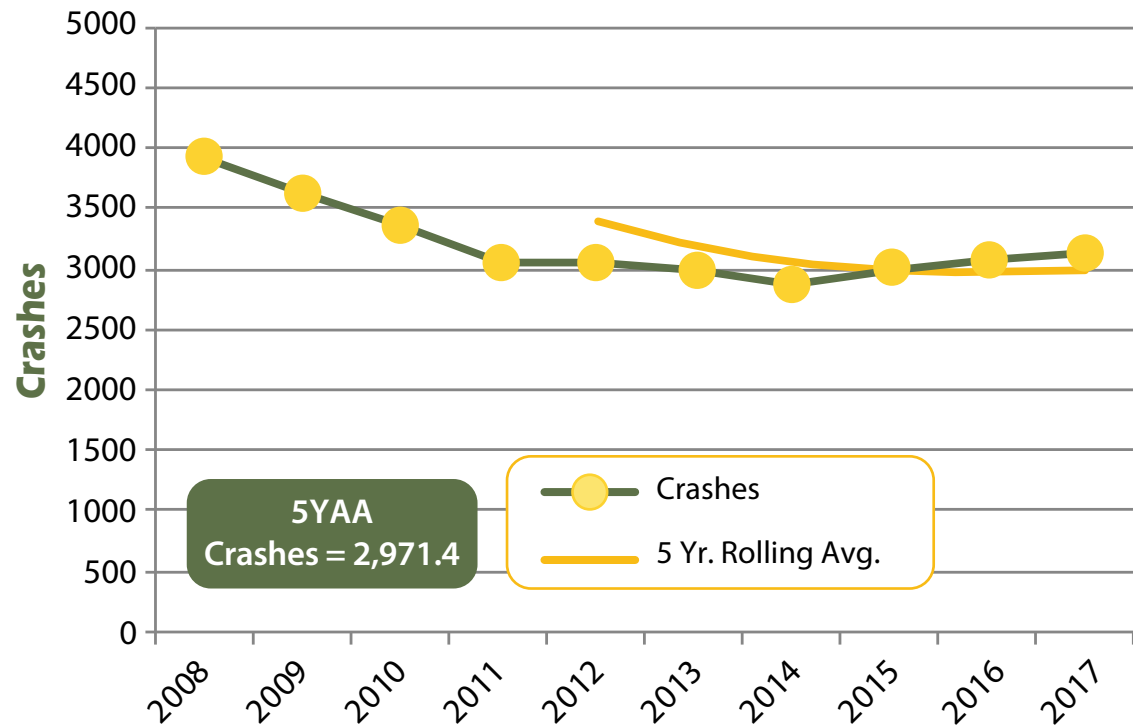
## Fatal Crash Rates by Driver Age (2013-2017)



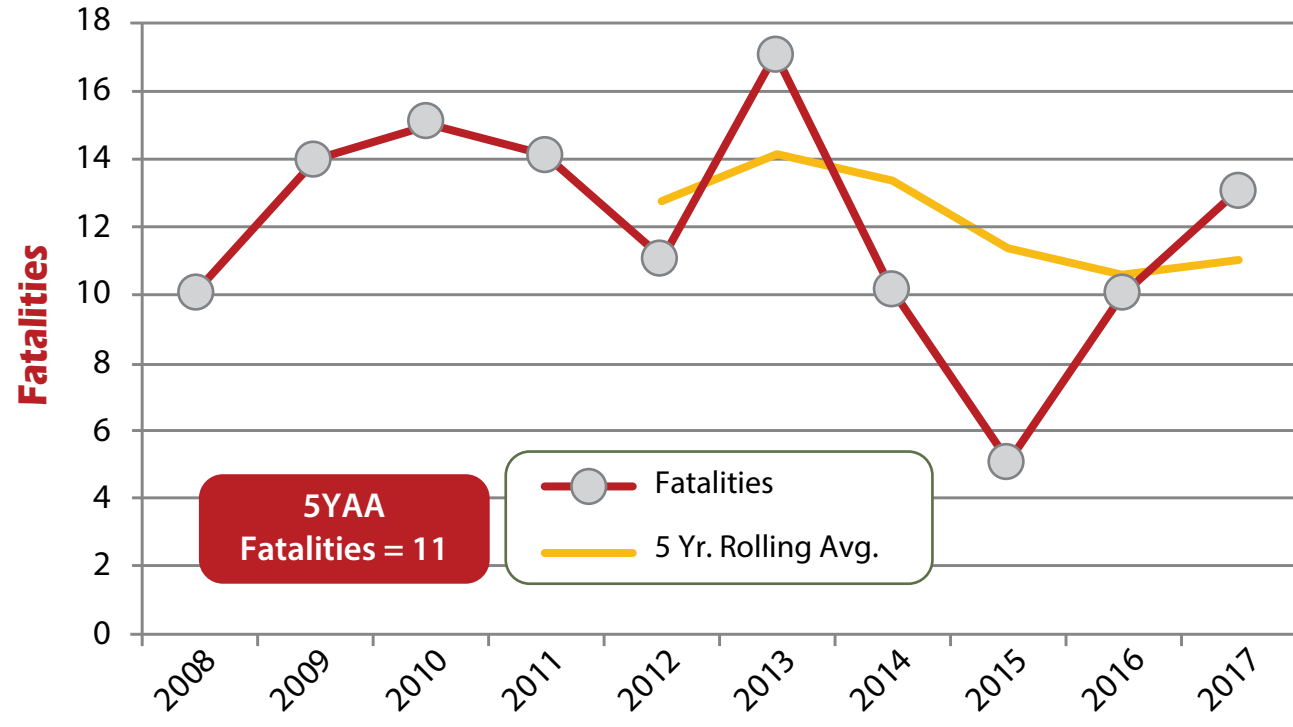
Fatalities include all fatal outcomes when a crash involves a driver in this age group (for any driver, passenger, pedestrian, bicyclist, etc. that died in the crash).

Licensed Drivers (Ages 16-18)	
2004	30,661
2005	30,522
2006	30,836
2007	30,182
2008	28,770
2009	28,030
2010	27,193
2011	26,243
2012	25,203
2013	24,383
2014	23,972
2015	23,240
2016	23,100
2017	23,609

### Driver Crashes (Ages 16-18)

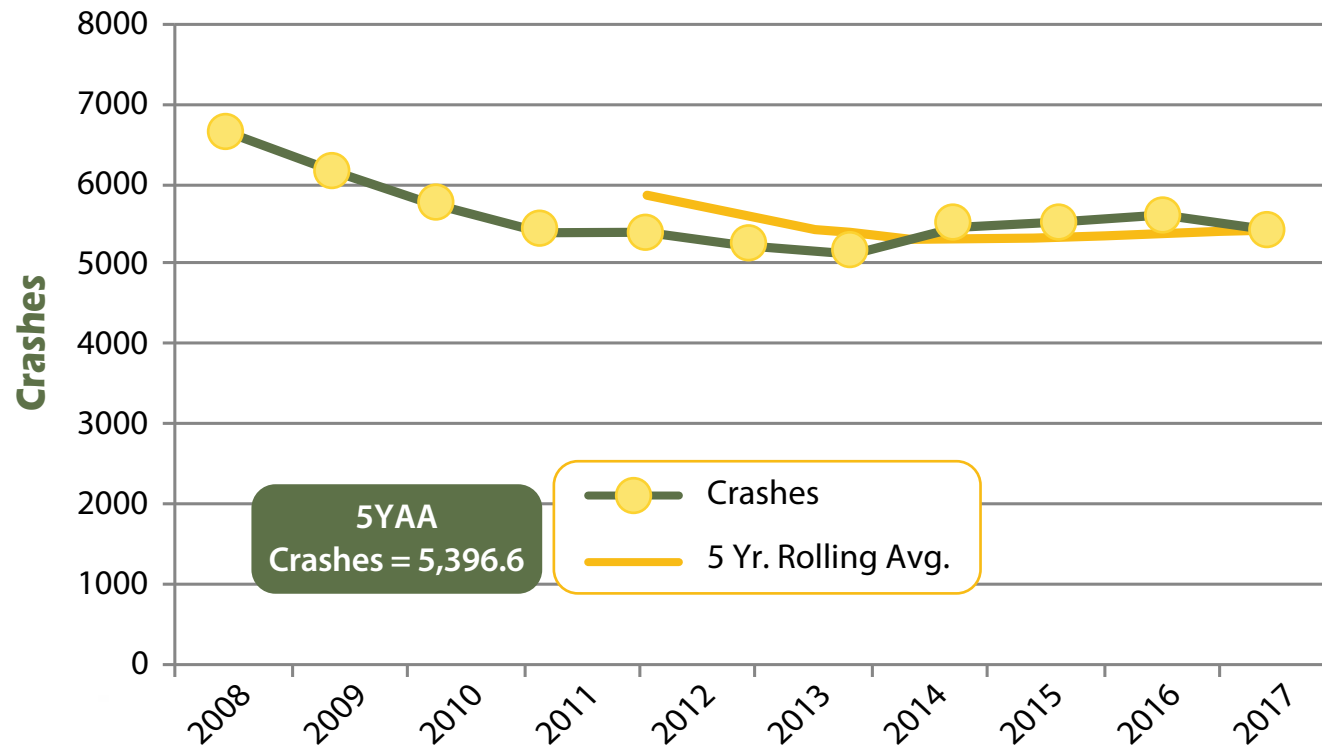


### Driver Fatalities (Ages 16-18)

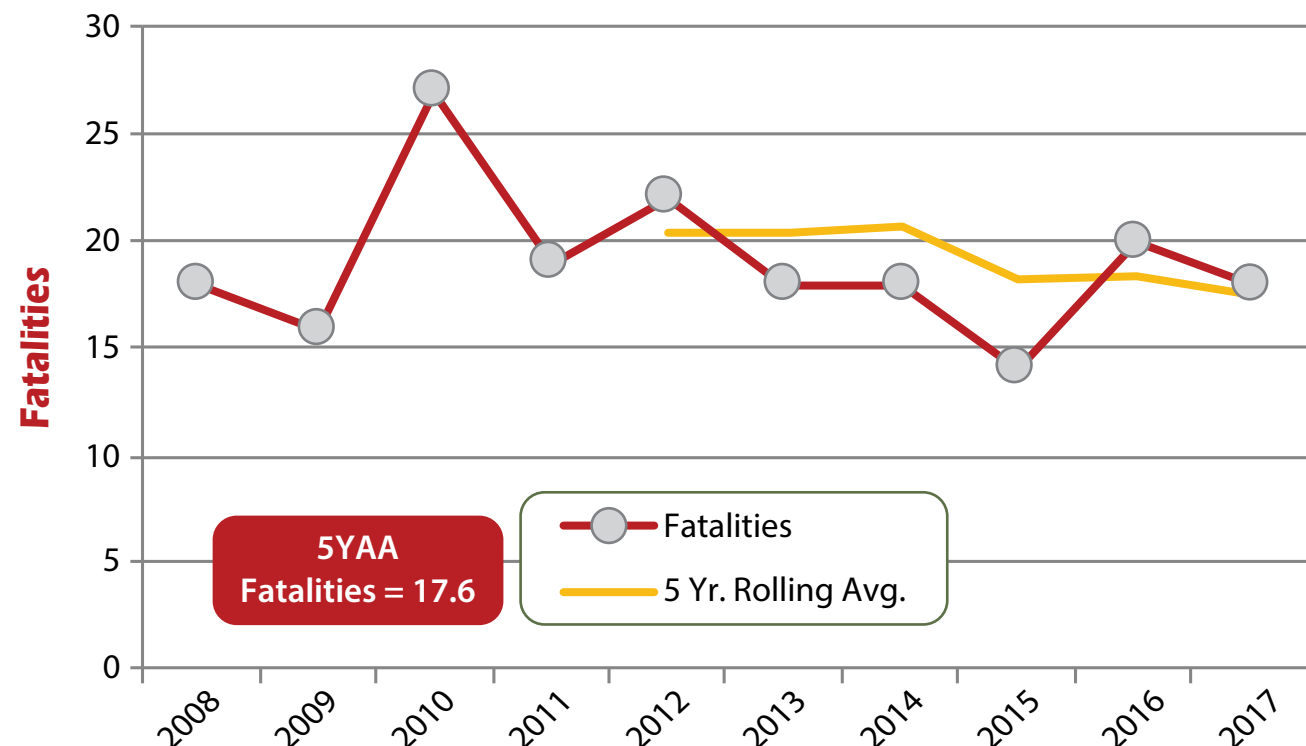


Fatalities include all fatal outcomes when a crash involves a driver in this age group (for any driver, passenger, pedestrian, bicyclist, etc. that died in the crash).

## Driver Crashes (Ages 16-20)

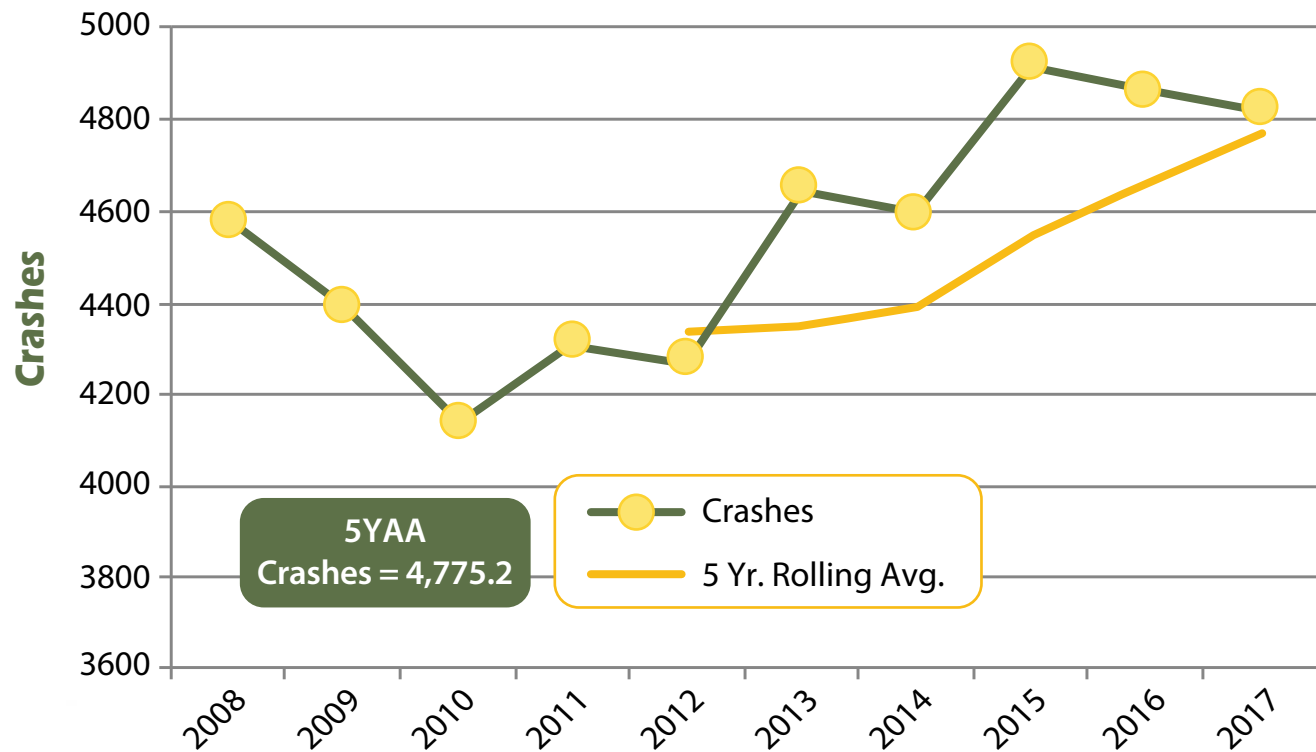


## Driver Fatalities (Ages 16-20)

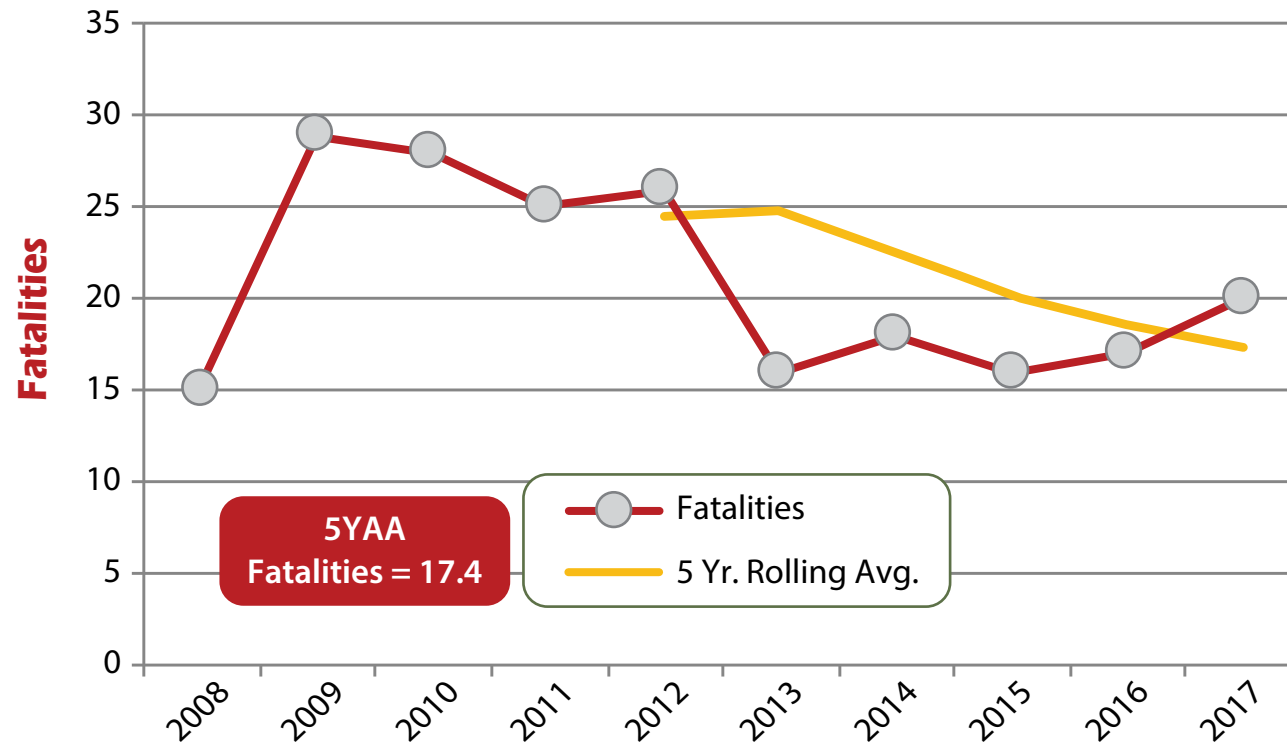


Fatalities include all fatal outcomes when a crash involves a driver in this age group (for any driver, passenger, pedestrian, bicyclist, etc. that died in the crash).

### Driver Crashes (Ages 21-24)



### Driver Fatalities (Ages 21-24)

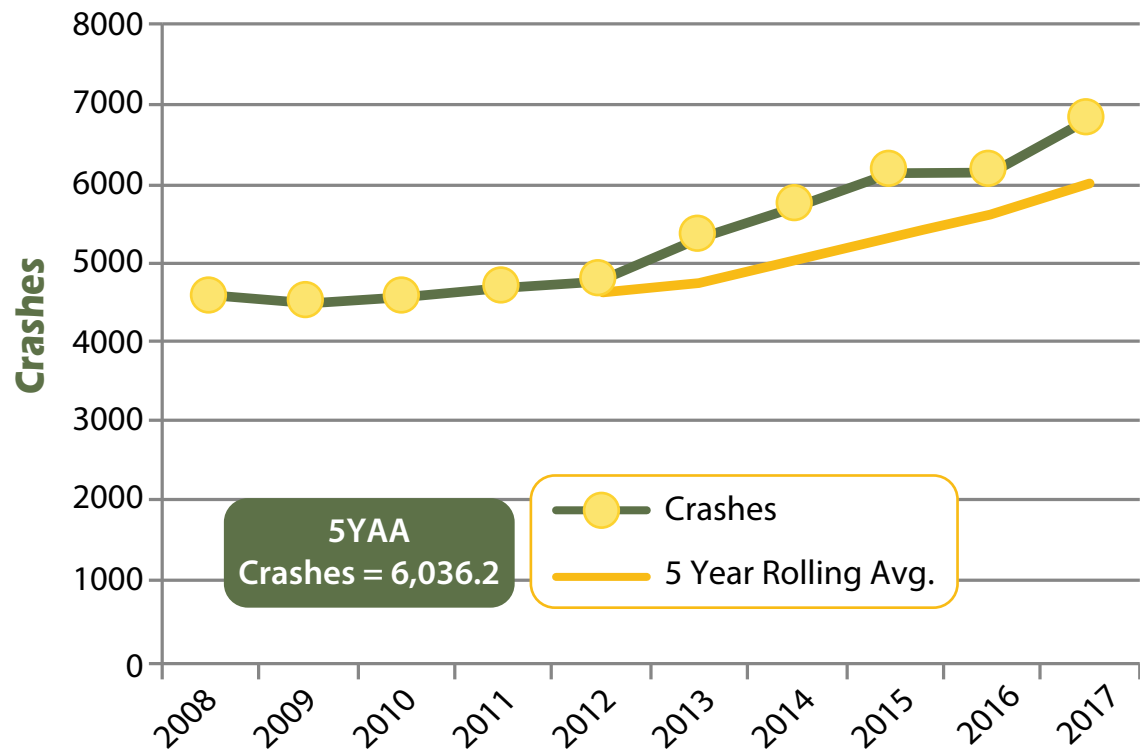


Fatalities include all fatal outcomes when a crash involves a driver in this age group (for any driver, passenger, pedestrian, bicyclist, etc. that died in the crash).

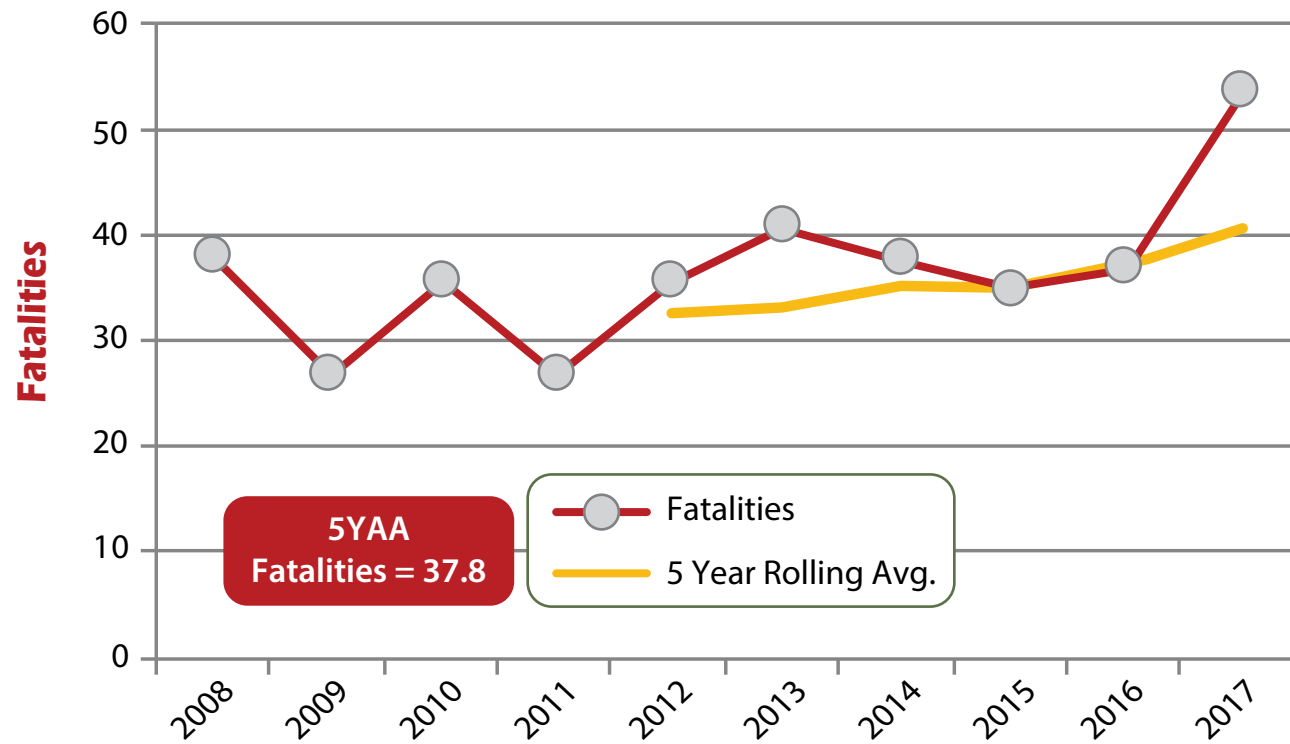
Mature Licensed Drivers		
Year	65-69	70+
2003	47,675	102,719
2004	49,084	105,750
2005	50,075	109,905
2006	51,310	109,659
2007	54,425	110,616
2008	58,174	114,247
2009	61,265	116,697
2010	81,677	118,323
2011	67,766	121,280
2012	72,553	124,625
2013	76,107	130,121
2014	80,585	134,162
2015	85,209	137,842
2016	87,690	143,654
2017	88,089	153,067

(BMV figures)

## Mature Driver Crashes (Ages 65-99)

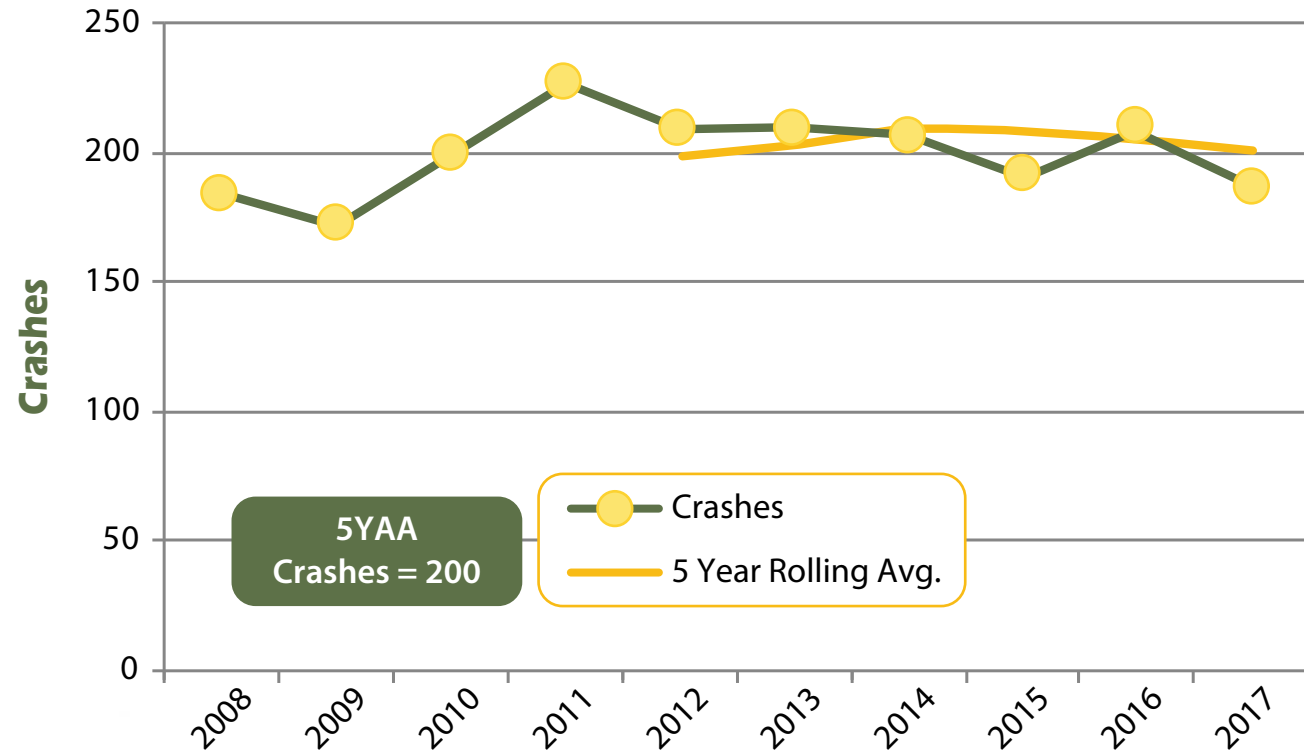


## Mature Driver Fatalities (Ages 65-99)

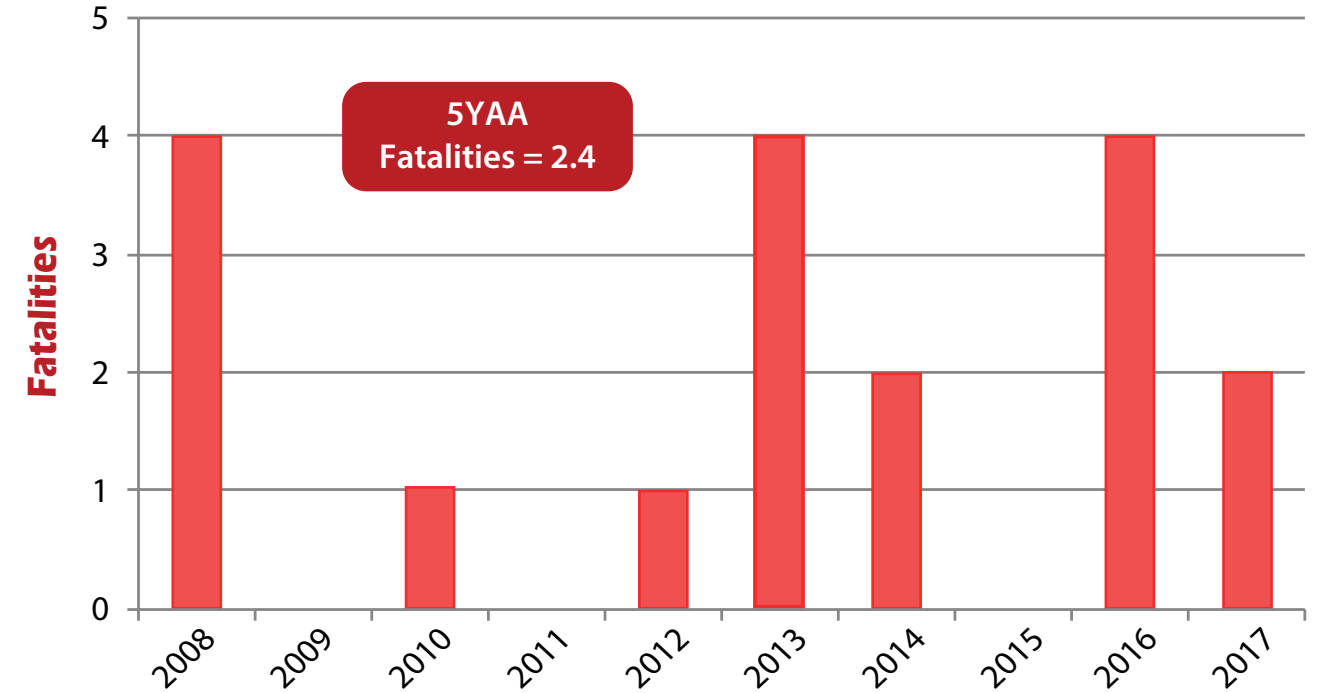


Fatalities include all fatal outcomes when a crash involves a driver in this age group (for any driver, passenger, pedestrian, bicyclist, etc. that died in the crash).

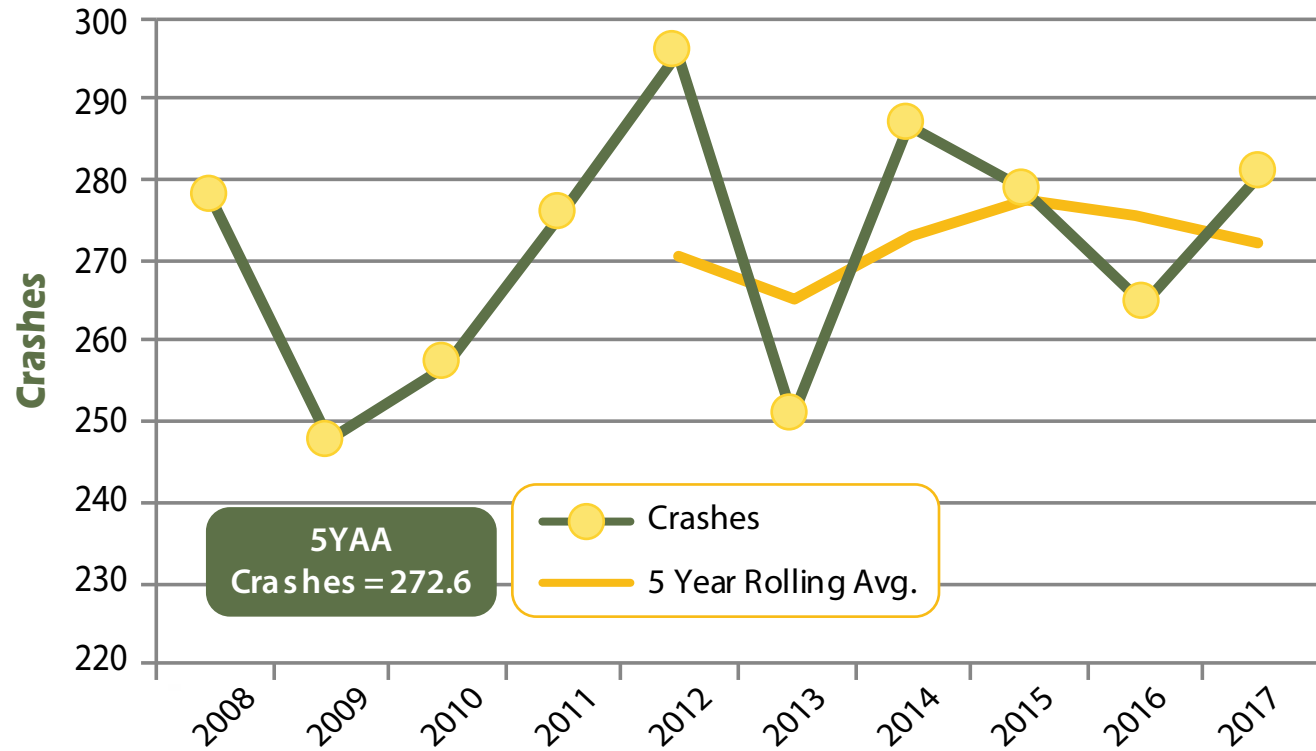
## Bike Crashes



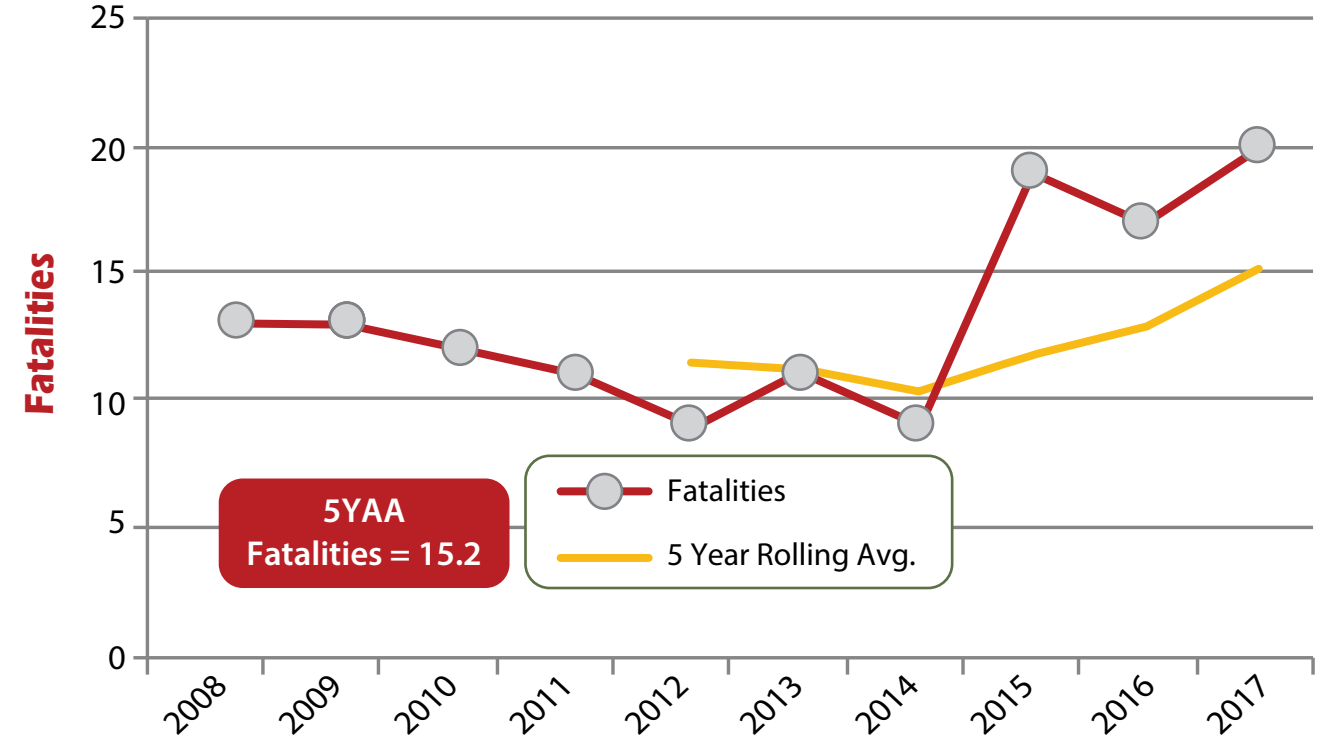
## Bike Fatalities



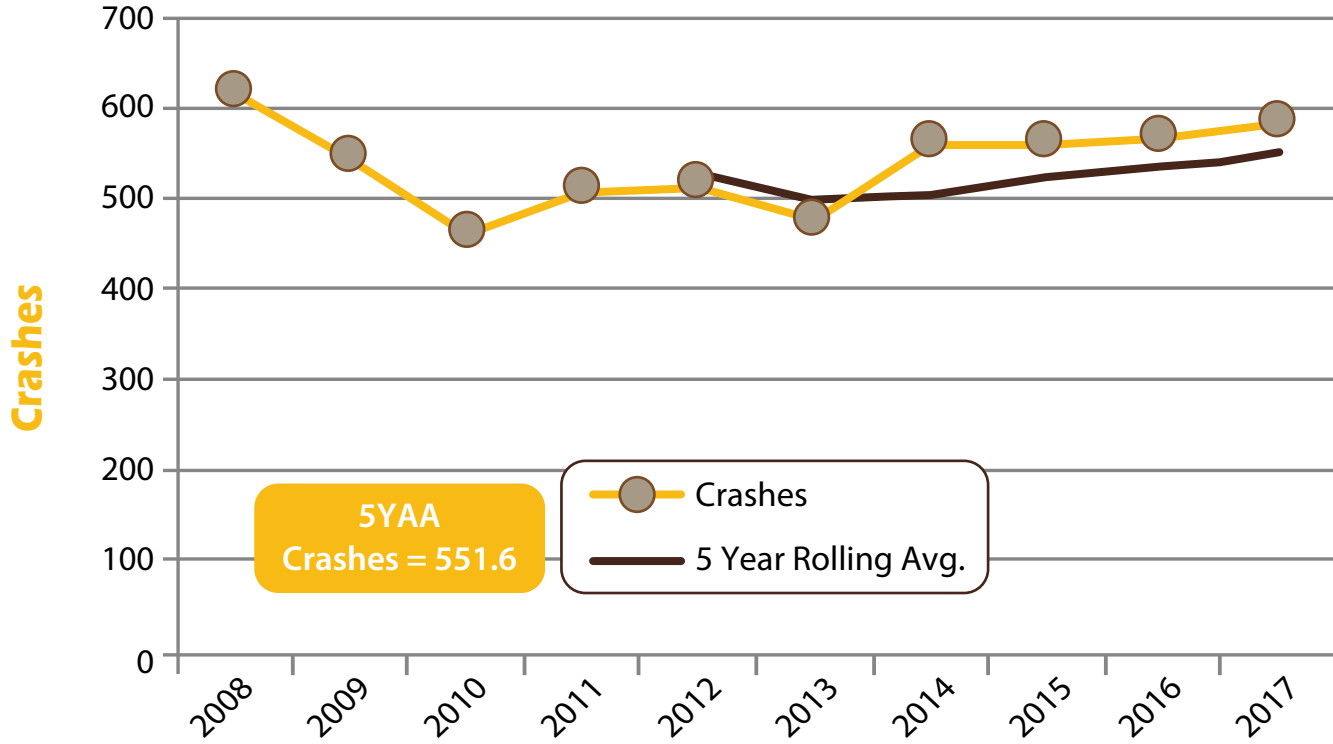
## Pedestrian Crashes



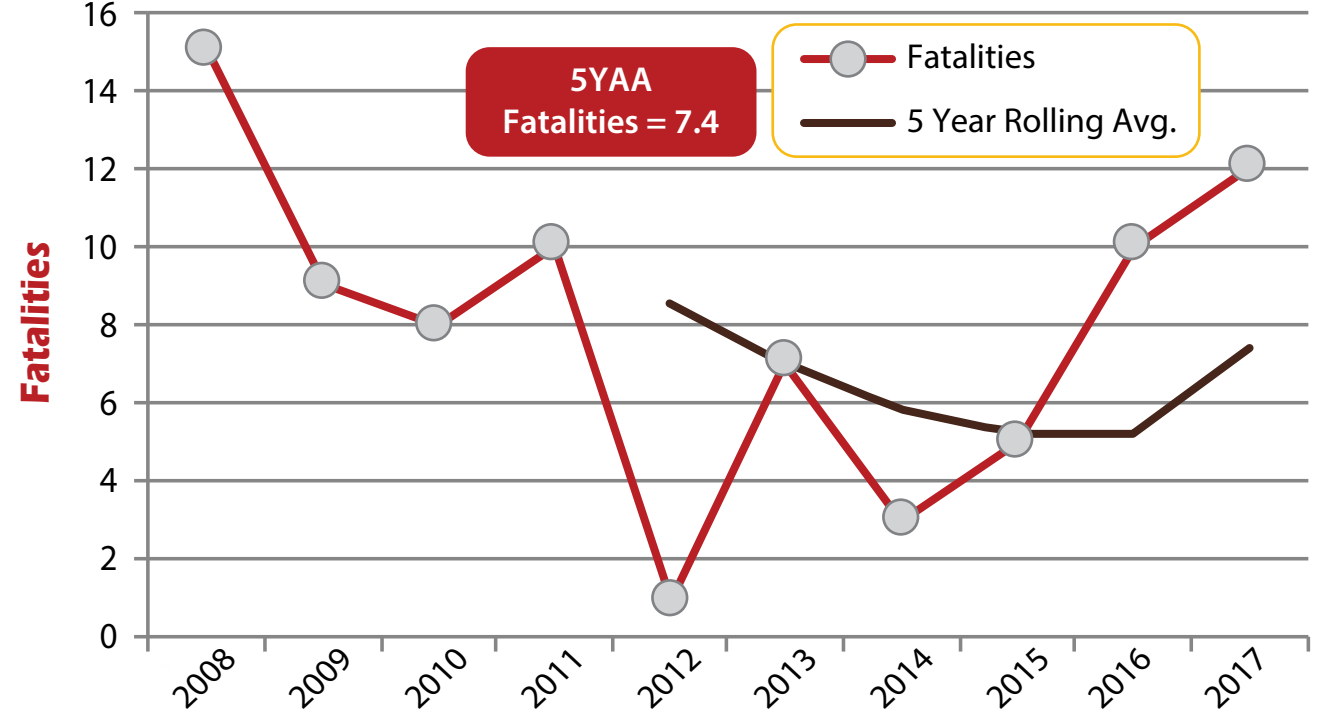
## Pedestrian Fatalities



**Truck Crashes (Units with Five Axles or More)**

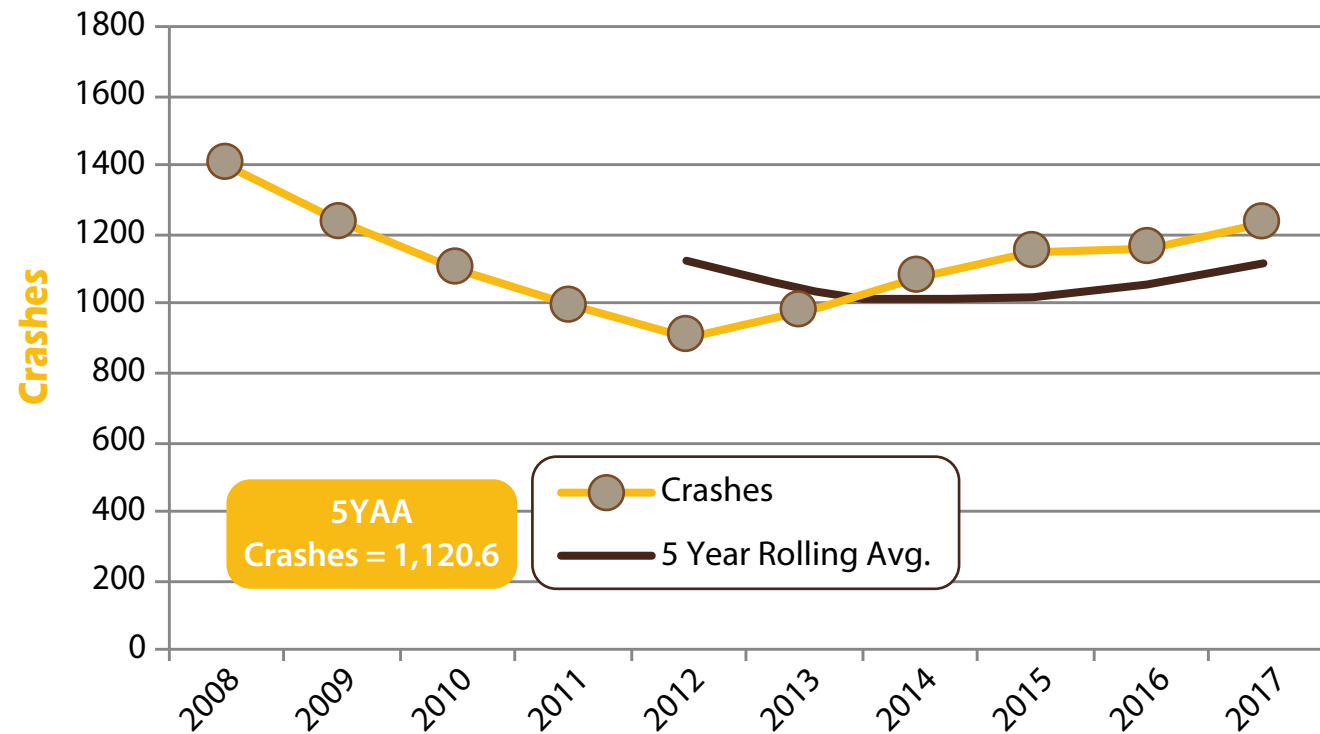


**Trucking Fatalities (Units with Five Axles or More)**

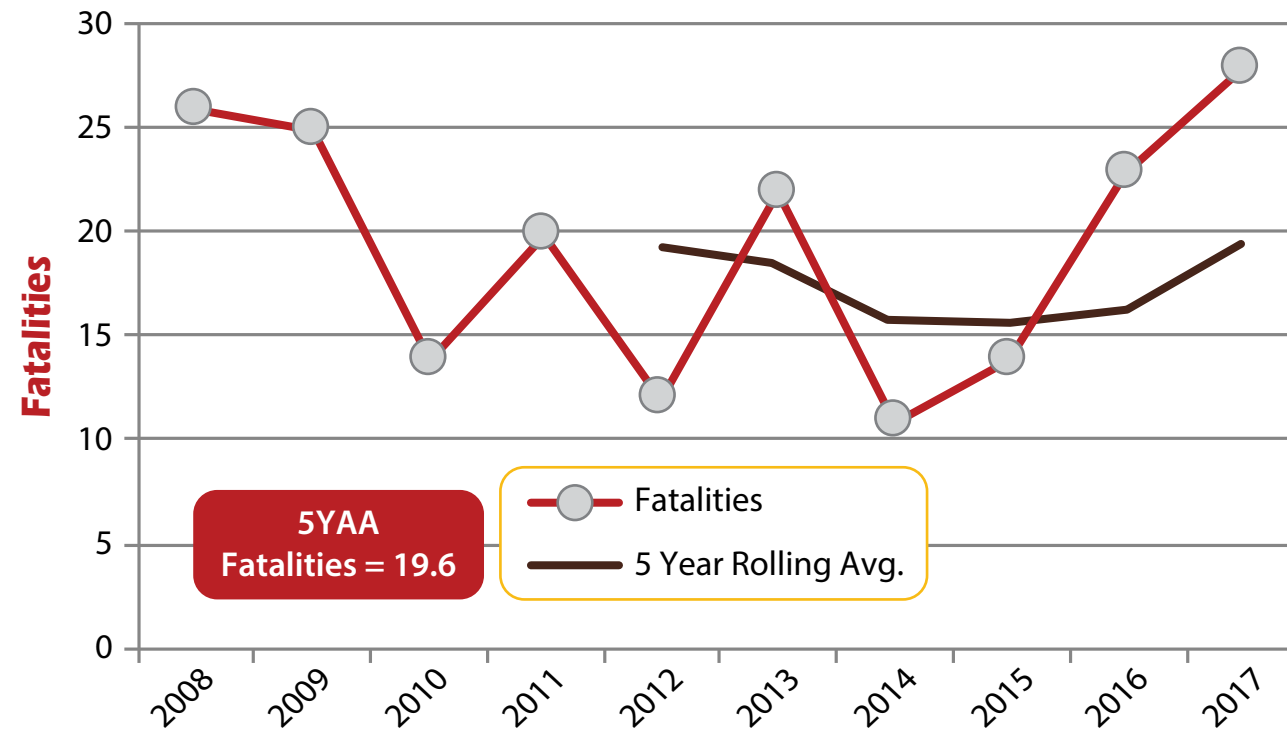




## Commercial Vehicle Crashes



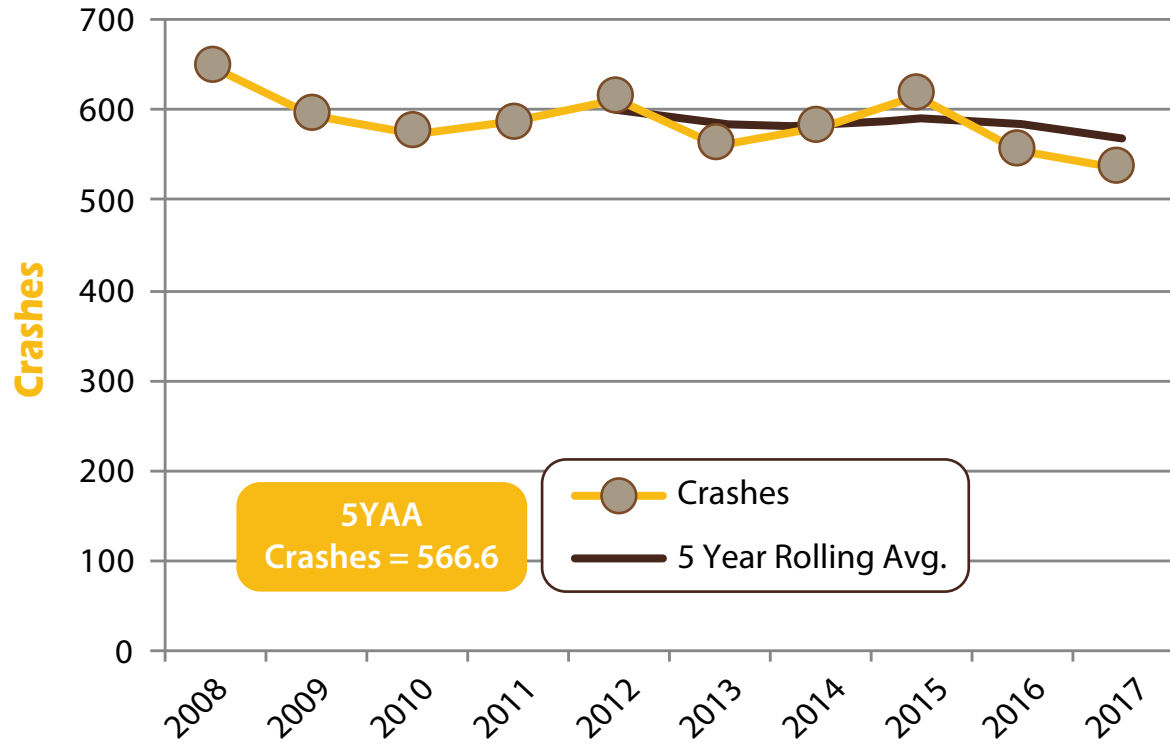
## Commercial Vehicle Fatalities



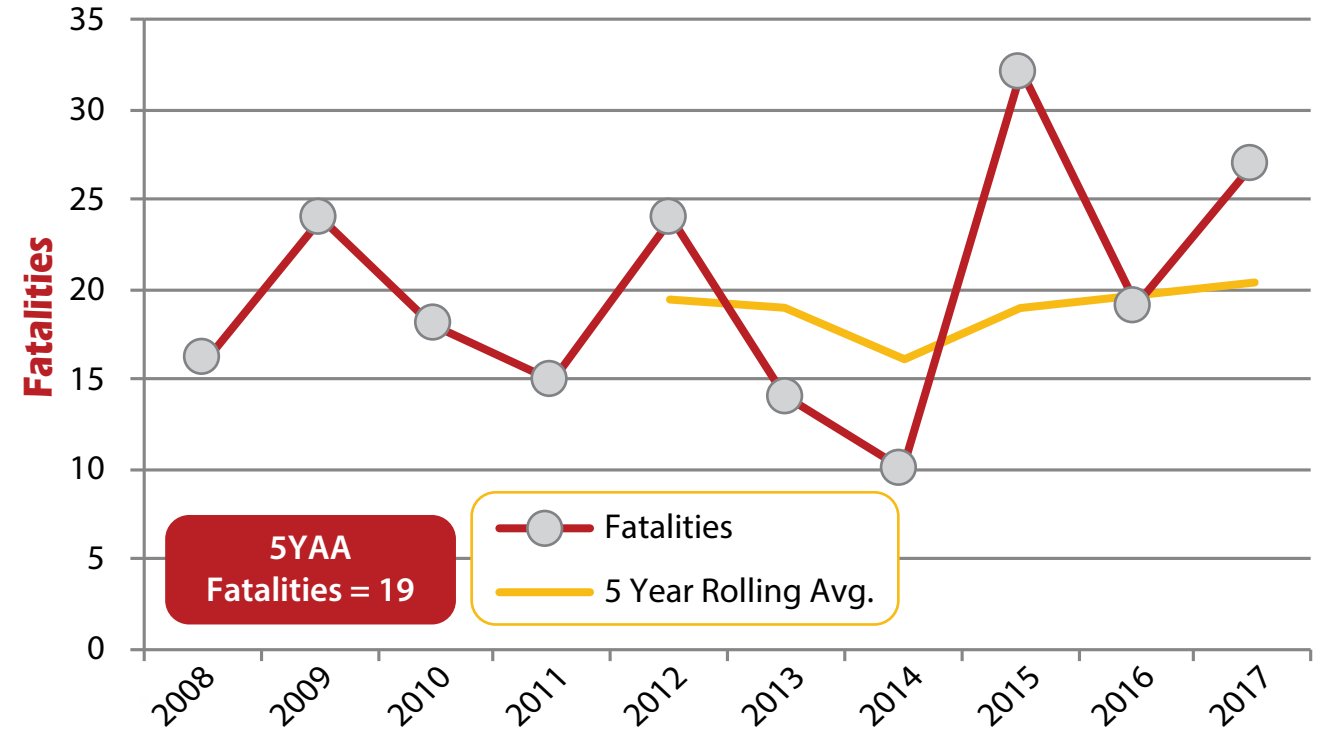
Motorcycle Registrations	
2008	51,414
2009	49,563
2010	48,561
2011	59,032
2012	50,613
2013	50,405
2014	54,675
2015	55,184
2016	54,767
2017	53,808

Information from  
Maine Bureau of Motor  
Vehicles Statistics - All  
Motorcycle Plate Types

## Motorcycle Crashes



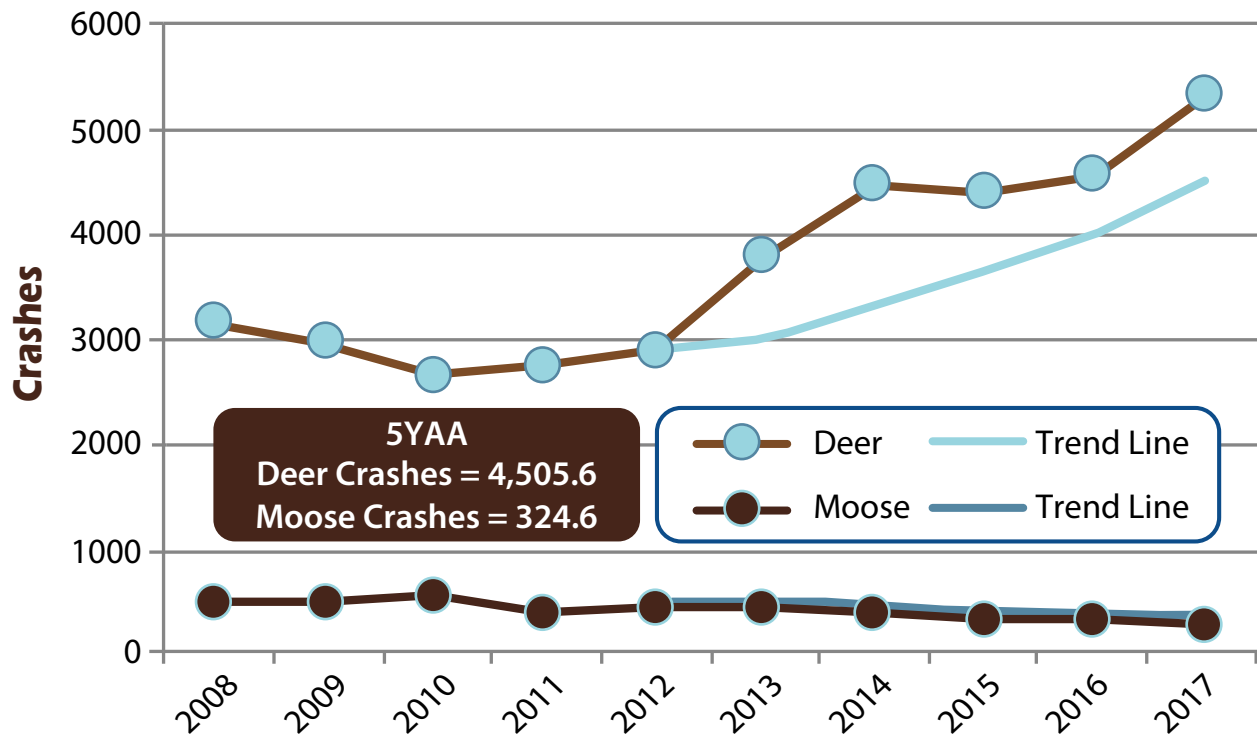
## Motorcycle Fatalities



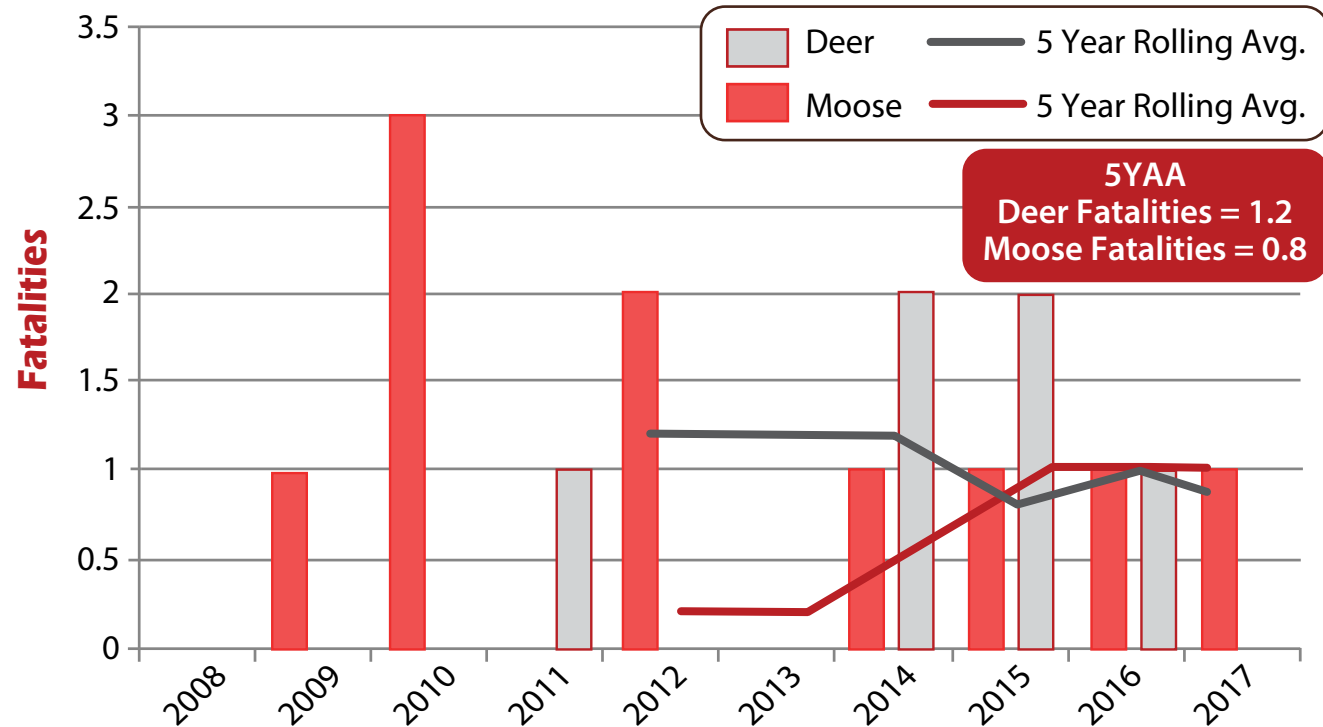
*NOTE: Includes bicyclist and pedestrian fatalities when struck by a motorcycle.*

# Large Animals (Deer and Moose)

## Deer and Moose Crashes



## Deer and Moose Fatalities

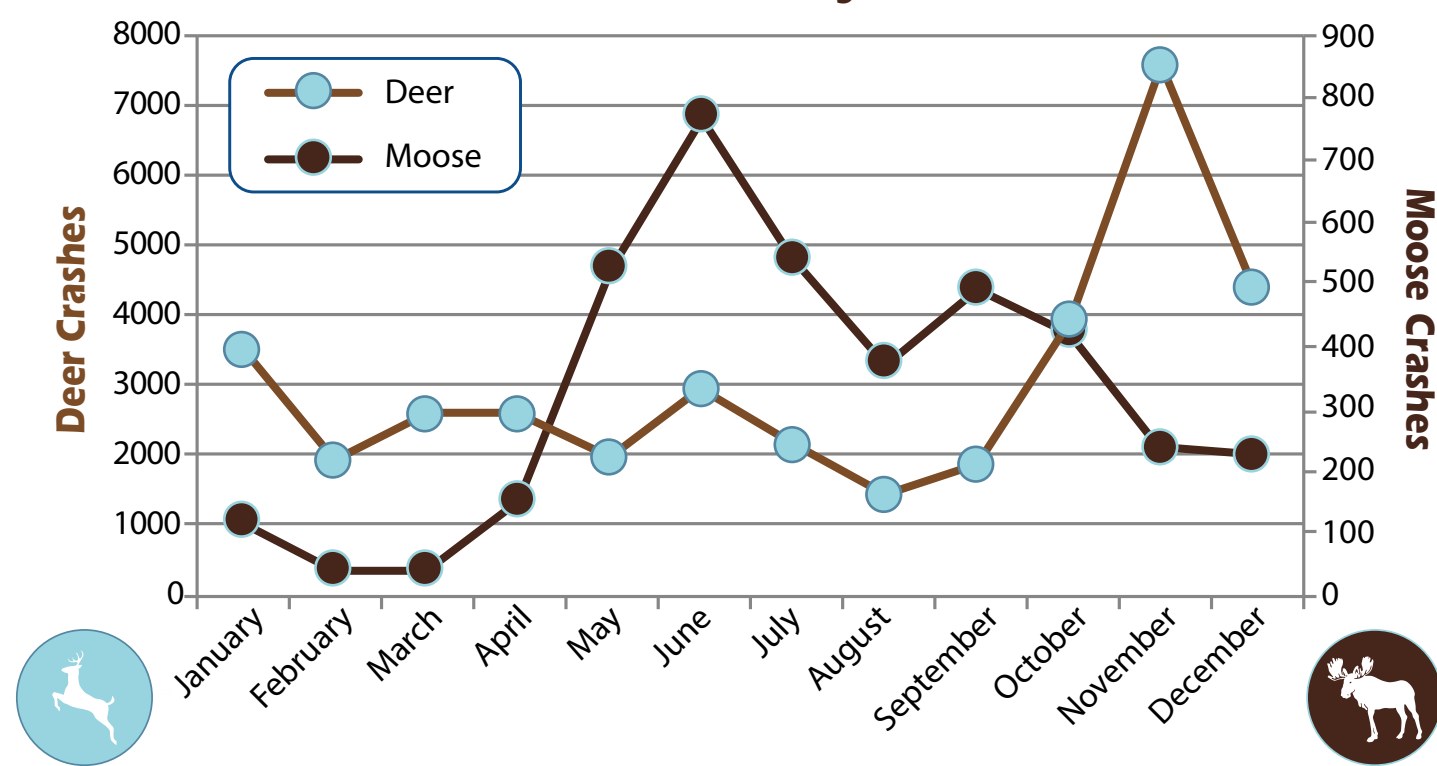


NOTE: Of the five deer fatalities shown, all were collisions with motorcycles.

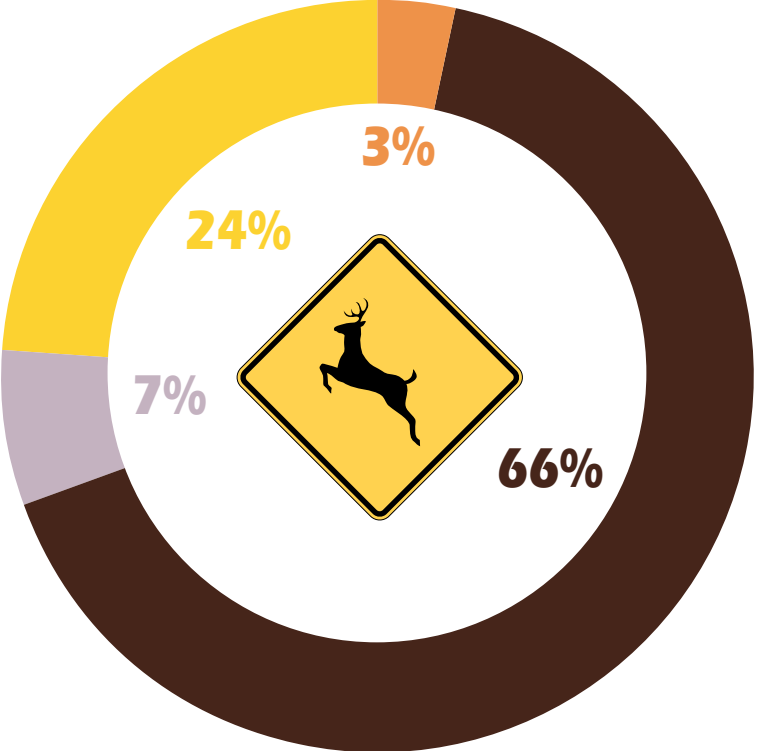
**Maine Deer and Moose Crashes by County (2008-2017)**

COUNTY	DEER CRASHES	MOOSE CRASHES
Androscoggin	1,948	34
Aroostook	2,017	1556
Cumberland	4,939	115
Franklin	1,331	363
Hancock	2,922	63
Kennebec	3,693	90
Knox	936	17
Lincoln	729	21
Oxford	1,755	273
Penobscot	5,179	556
Piscataquis	939	155
Sagadahoc	894	11
Somerset	2,494	260
Waldo	1,895	31
Washington	1,625	209
York	3,321	103
<b>TOTAL</b>	<b>36,617</b>	<b>4,556</b>

**Deer and Moose Crashes by Month (2008-2017)**

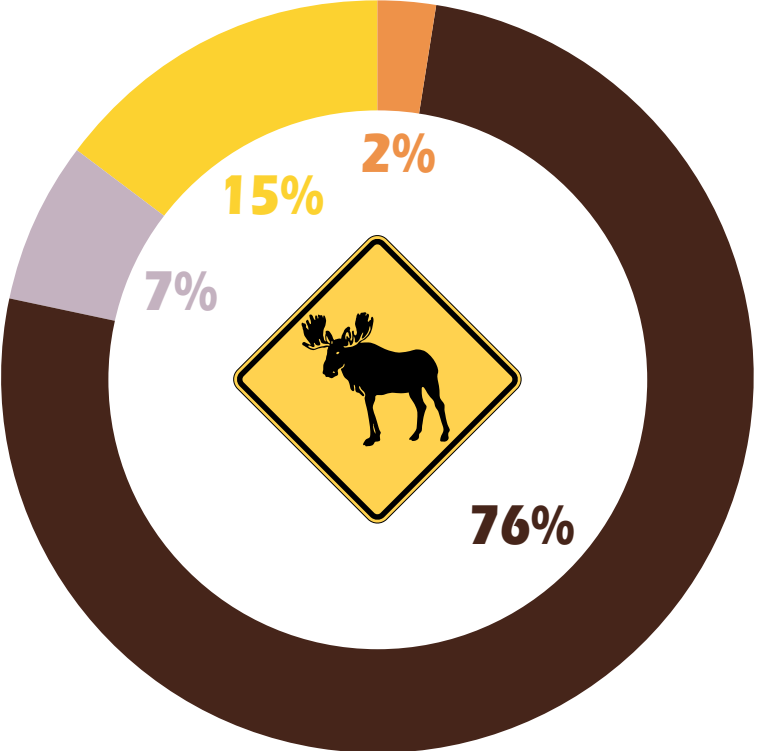


### Deer Crashes by Light Conditions (2008-2017)

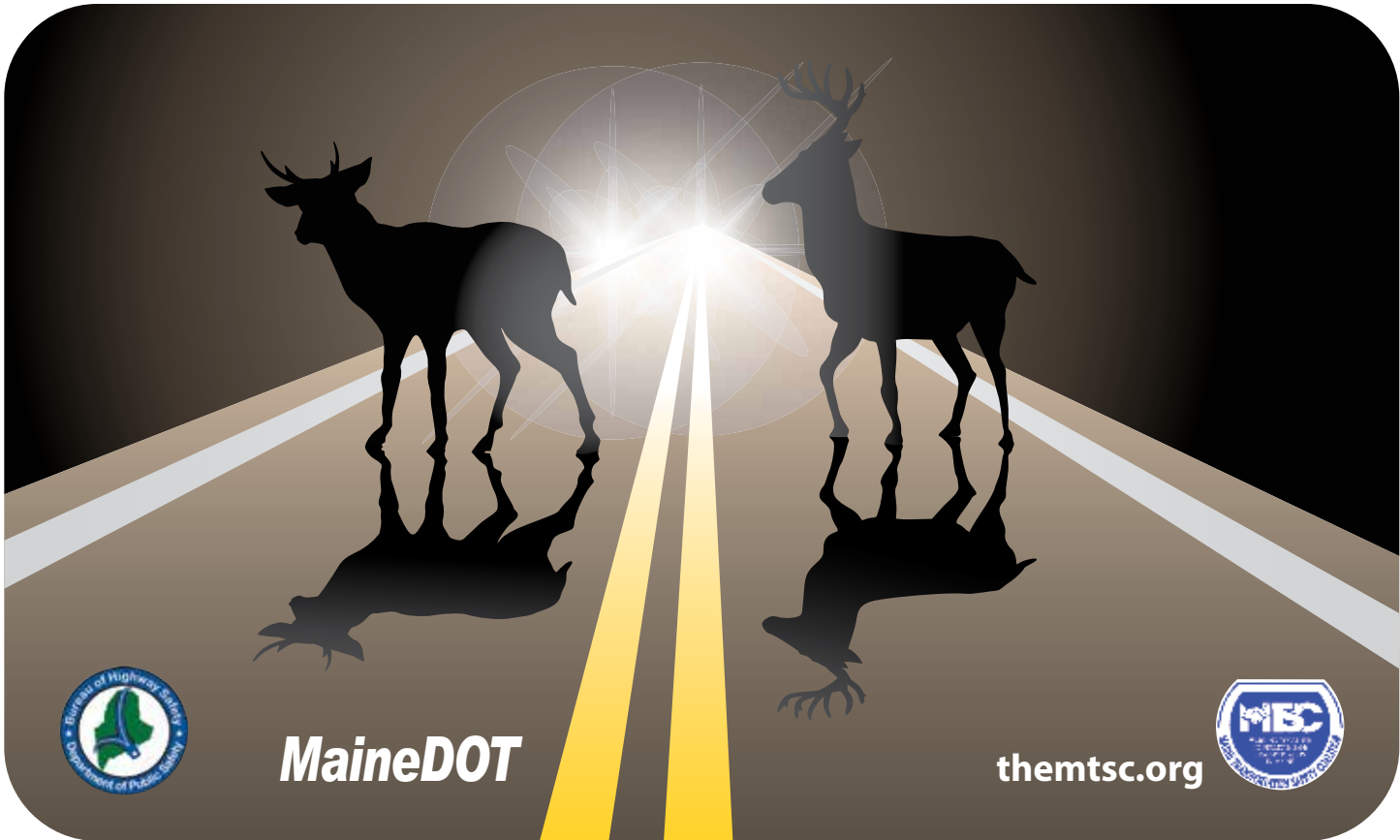


- Dusk
- Dark
- Dawn
- Daylight

### Moose Crashes by Light Conditions (2008-2017)



- Dusk
- Dark
- Dawn
- Daylight



**MaineDOT**

[themtsc.org](http://themtsc.org)