

Attachment B

Summary of Mason Station Investigation

Mason Station Power Plant

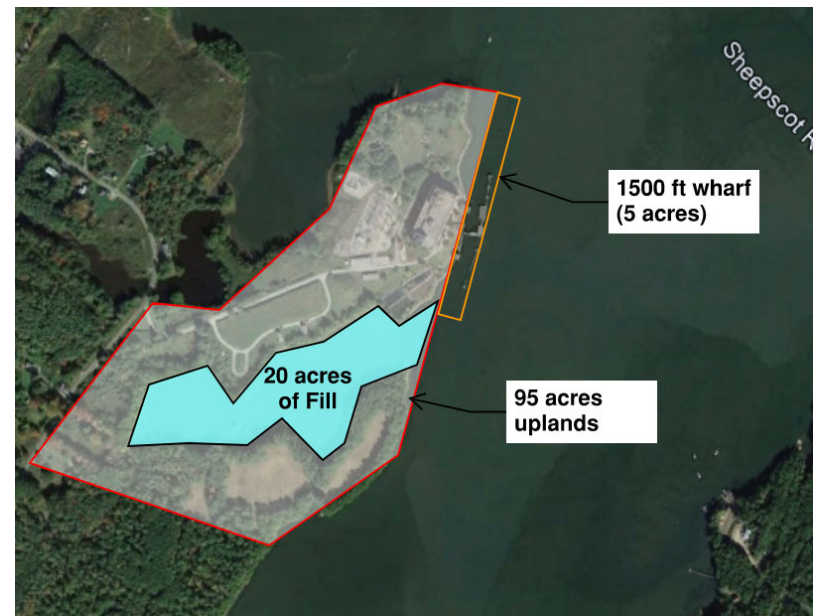
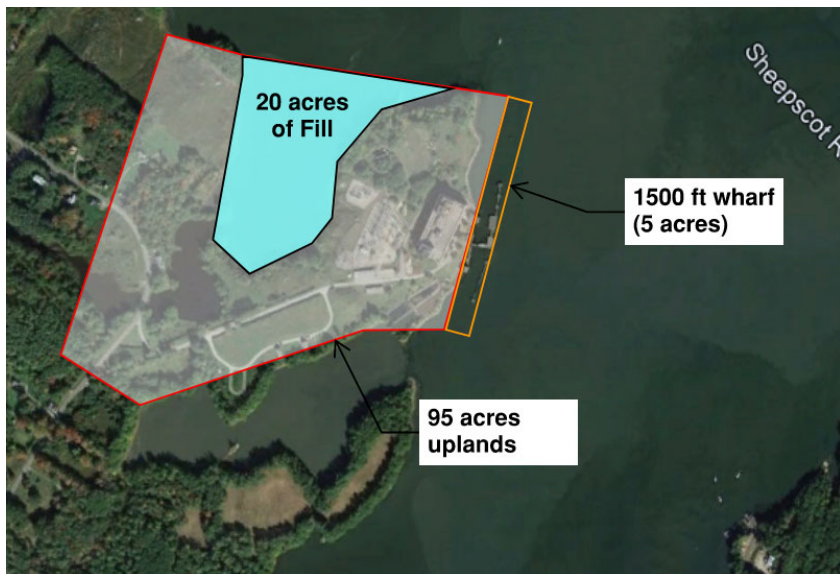
- Info based on desktop study and meeting with LCRPC on 5/26/21
- Based on size and width of channel – no go for floating marshalling port

| | |
|-----------------------------------|--|
| Location: | Wiscasset, ME |
| Owner: | Mason Station, LLC |
| Existing Use: | Abandoned Power Plant |
| Size: | 8.3 acres (+7 acres CMP) If all of birch point could be used (~33 acres, too small) |
| Deep water access type: | Pier |
| Min. channel depth: | <55 ft. Large dredge required at berth pocket to access channel |
| Min. channel width: | < 200 ft |
| Navigational Restrictions: | None. Channel width is too narrow. |
| Distance to open water | 14 nm |



Mason Station – Area

- Small Area does not meet Port Criteria
- Approximately 20 acres of Infill Required

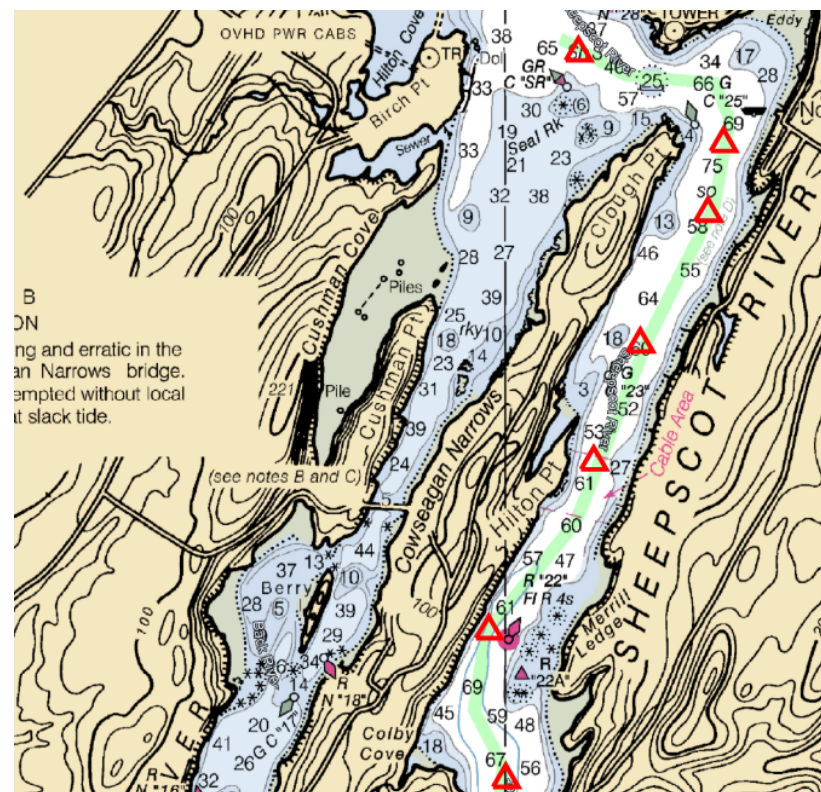


Mason Station – Channel Access

- 14 nm from site to open water through narrow channel.
- Figure to right shows Sheepscot River channel with 400' triangular floating foundation (red).
 - Green channel is 200 ft wide.
- Note in NOAA Pilot below:
 - Area of shoaling south of Davis Island

Channels

(258) The channel in Sheepscot River is deep, and the principal dangers are marked. It is a region of rocks and ledges, many of them rising abruptly from deep water. The channel has a depth of over 30 feet to Wiscasset and is navigable for small craft at high water for about 4 miles above Wiscasset to the village of Sheepscot. There is a 25-foot shoal in midchannel in the bend below Wiscasset, about 270 yards south-southwestward of the tower of old **Fort Edgecomb** on the southwestern end of **Davis Island**.



Mason Station Power Plant

