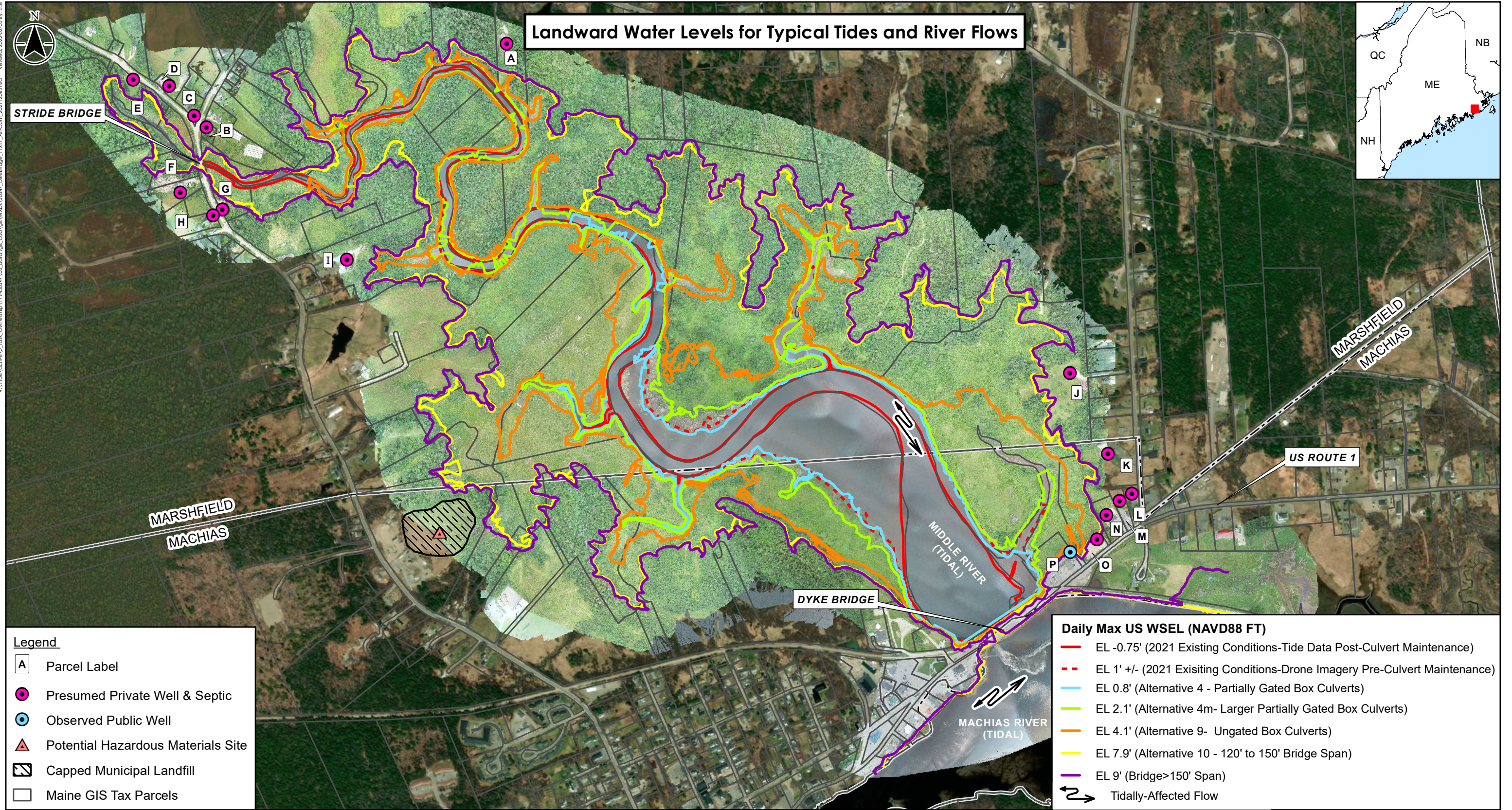


V:\195A\active\0\_Inst. Co\members\179450347\_03\_data\gk\_cad\gk\_cad\11x17\_Alt-Cont\_2021\_1206.mxd Review: 2022-02-03 By: EPL



Disclaimer: Stantec assumes no responsibility for data supplied in electronic format. The recipient accepts full responsibility for verifying the accuracy and completeness of the data. The recipient releases Stantec, its officers, employees, consultants and agents, from any and all claims arising in any way from the content or provision of the data.

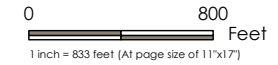


30 Park Drive  
 Topsham, ME USA 04086  
 Phone (207) 729-1199

Prepared by EPL on 2021-12-06  
 Reviewed by TM on 2021-12-06  
 50347\_DikeBridge\_11x17\_Alt-Cont\_20211206.mxd

**Notes**

- Existing conditions are based on 2021 tidal stage data that was collected after leaking gates were fixed and 2021 drone imagery collected by MaineDOT before the leaking gates were fixed and represent a range of potential existing conditions.
- Approximate water surface elevations (WSEL) for proposed alternatives are based on the 2021 Phase 1 and Phase 2 hydraulics analyses using tidal stage data collected by MaineDOT in 2021.
- Coordinate System: NAD 1983 UTM Zone 19N FT
- Vertical Datum: NAVD88
- Aerial imagery in the project area was obtained by unmanned aircraft vehicle (UAV) by MaineDOT on July 20, 2021.
- Aerial imagery surrounding the project area is provided by ArcGIS Online World Imagery Mapping Service ([http://server.arcgisonline.com/arcgis/services/World\\_Imagery/MapServer](http://server.arcgisonline.com/arcgis/services/World_Imagery/MapServer)).
- TIN Surface information is based on survey data provided by the Maine Department of Transportation.



**Client/Project**  
 Maine DOT  
 Dyke Bridge  
 Machias, Maine

Figure No.  
 B-1

Title  
 Landward Water Levels for  
 Typical Tides and River Flows  
 2/3/2022

**DRAFT**

179450347