

Maine-NH Connections Study

Stakeholder Committee Meeting

January 19, 2010

Kittery Trading Post



Agenda

- Welcome
- Process/Next Steps
- TIGER Grant Application Update
- Results of Round 3 Fatal Flaw Analysis
- Alternatives Recommended to be carried forward
- Detailed Evaluation of Feasible Alternatives

Process/Next Steps

- Stakeholder Committee: Feedback from you today on Study Team recommendations
- Finalize Fatal Flaw report/findings by January 31st
- DOT's/FHWA review/approval by mid-February
- Remaining alternatives to have a detailed analysis against all evaluation criteria between Feb-April 2010
- Next Public Meeting – February 10, 2010

TIGER Grant Application Update

- TIGER Grant Application for Memorial Bridge submitted in September
- February 17, 2010 decision deadline
- If TIGER Grant Application is successful, all remaining Memorial Bridge options in Study eliminated – focus on Sarah Long Bridge options
- Study schedule remains the same

Fatal Flaw Analysis

- Fatal Flaw Process
 - Study Purpose and Need
 - 16 Evaluation Criteria
 - Generated 63 different alternatives
- An OPTION is one piece of the ALTERNATIVE.
- An ALTERNATIVE is an entire solution.
- Round 1: 34 alternatives eliminated
- Round 2: 14 alternatives eliminated

Fatal Flaw - Round 1, 2, and 3 Results

- General Public, Steering and Stakeholder Committee concurrence on Round 1 and 2 findings at Dec. 16th Public Informational Meeting
- Looking for Stakeholder Committee input on Round 3 today

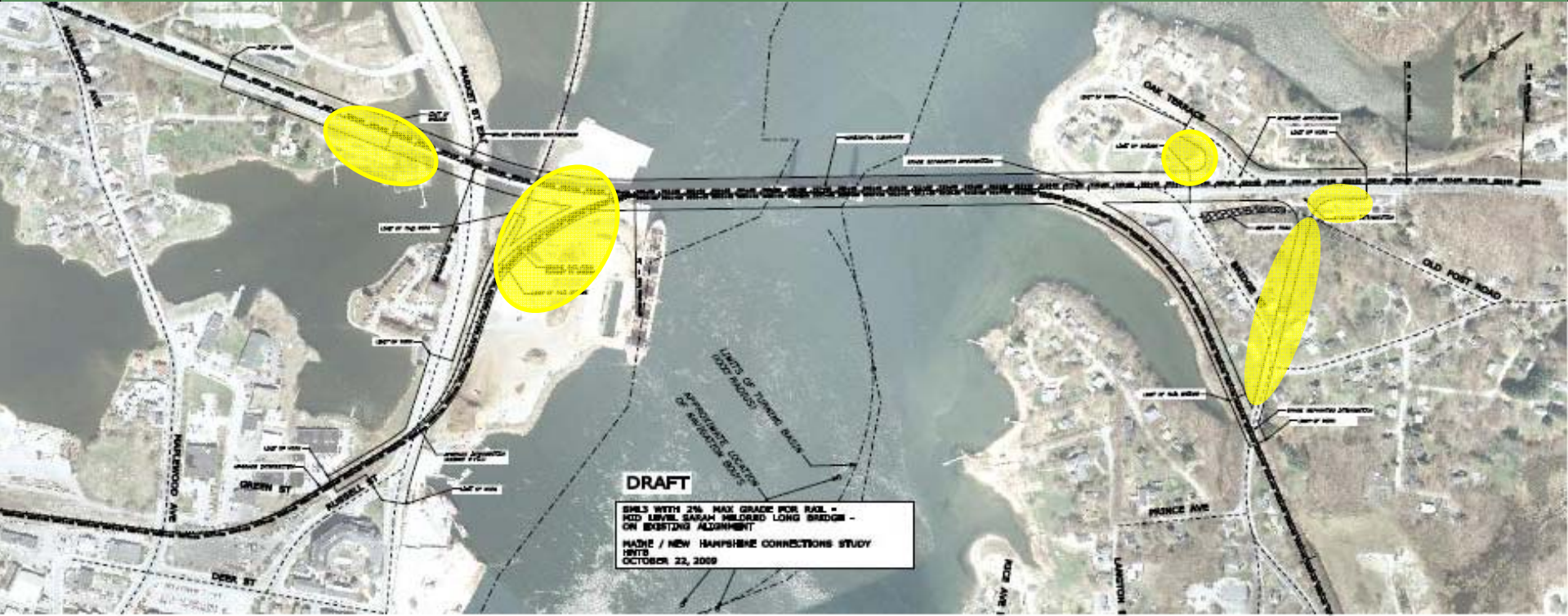
Alternatives and Options
Considered but Eliminated

Round 3

Fatal Flaw Analysis – Round 3

- Compared options and alternatives against:
 - Impacts at/near Port of New Hampshire
 - Order of Magnitude Life Cycle costs
 - Mobility of Study Area without Sarah Long bridge during construction
- Result – 15 alternatives reduce to 9*
 - * - includes No-build alternative*

SL3-Mid Level Bridge on Alignment



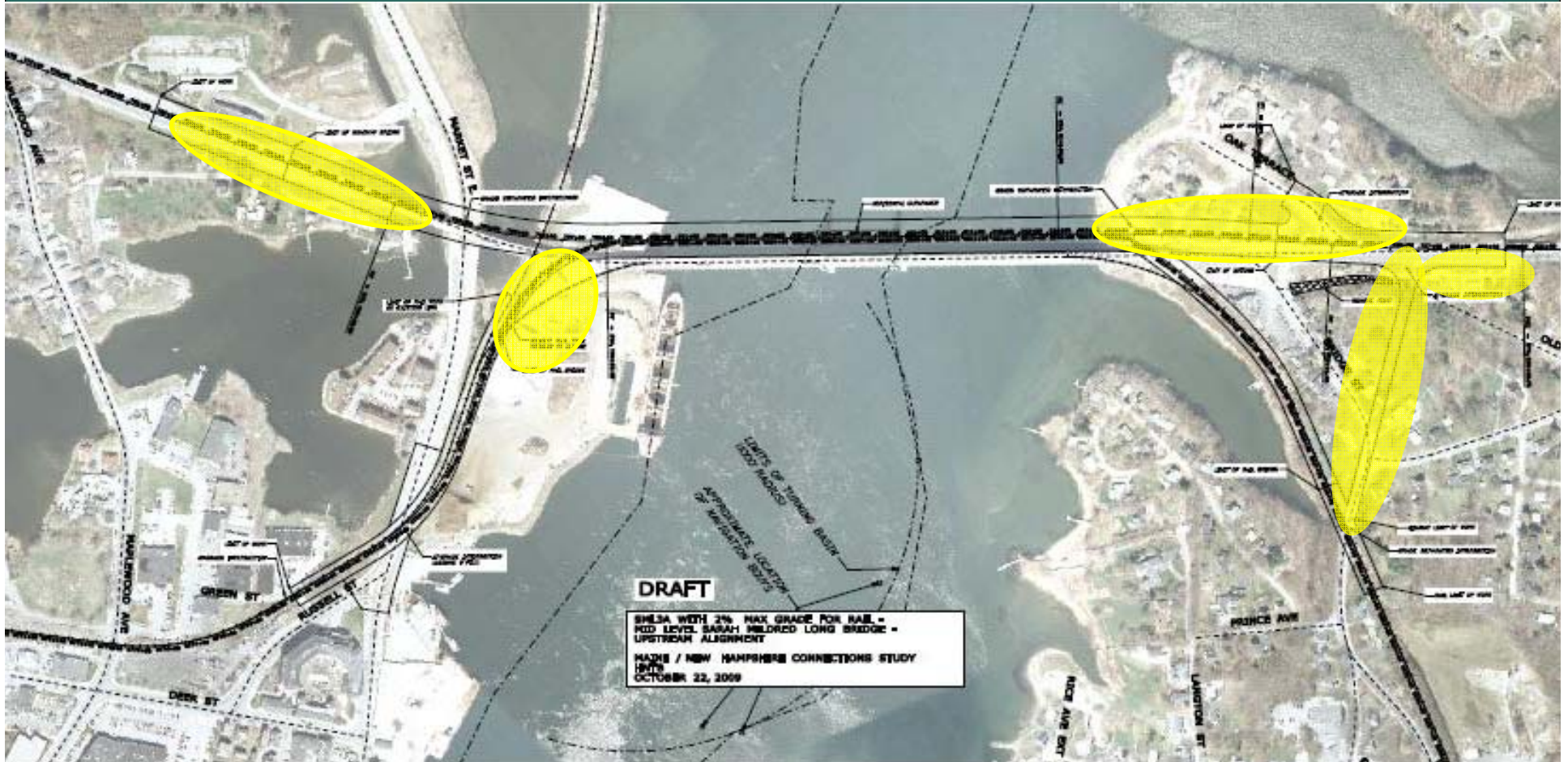
Sarah Long Bridge Option

SL3A-Mid Level Bridge Upstream



Sarah Long Bridge Option

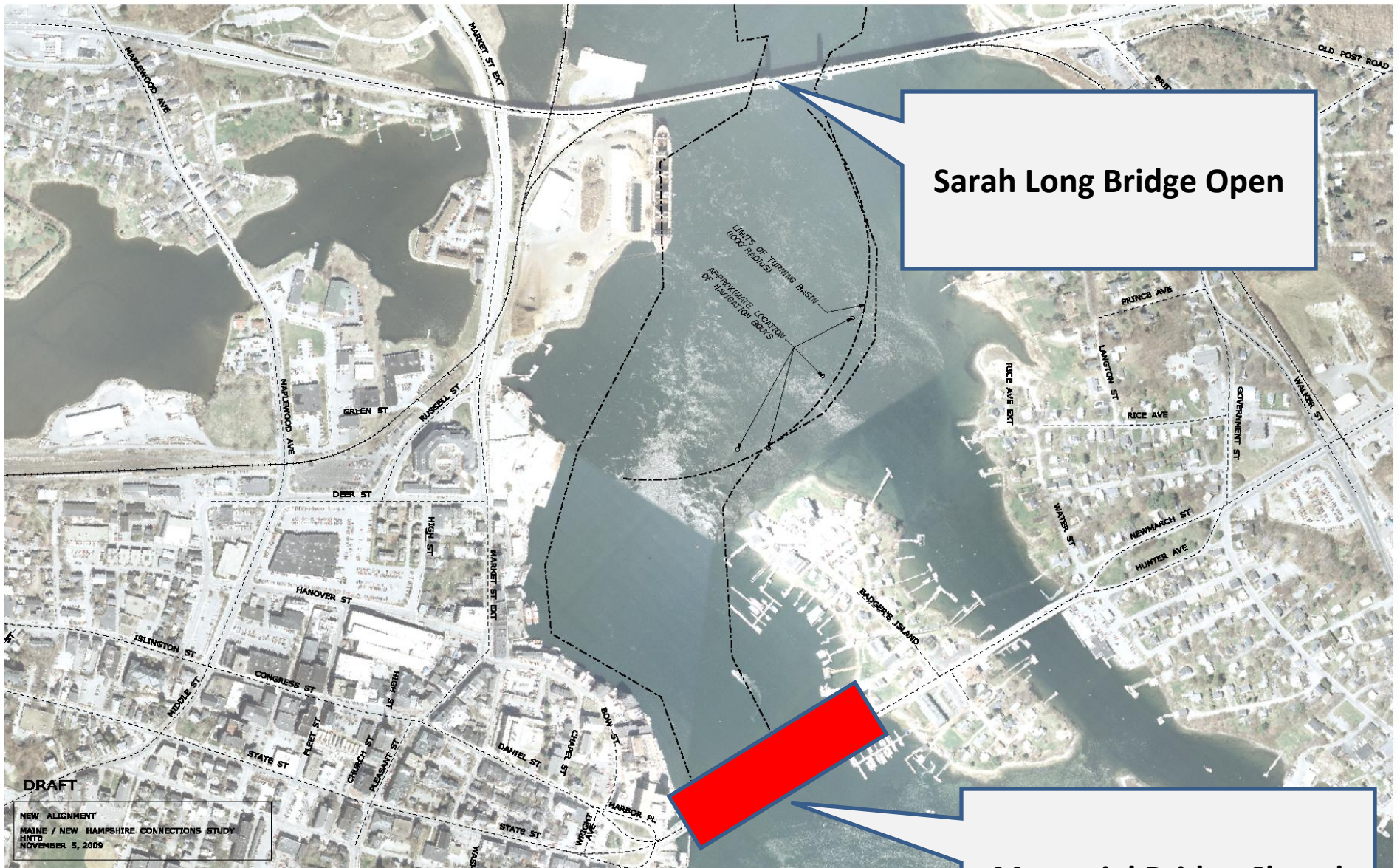
SL3A-Mid Level Bridge Upstream



Sarah Long Bridge Option

Alternatives and Options
carried forward for further study

No Build Alternative



Sarah Long Bridge Open



Memorial Bridge Closed

DRAFT
NEW ALIGNMENT
MAINE / NEW HAMPSHIRE CONNECTIONS STUDY
HNTH
NOVEMBER 5, 2009

MB1 – Rehab on Existing Alignment



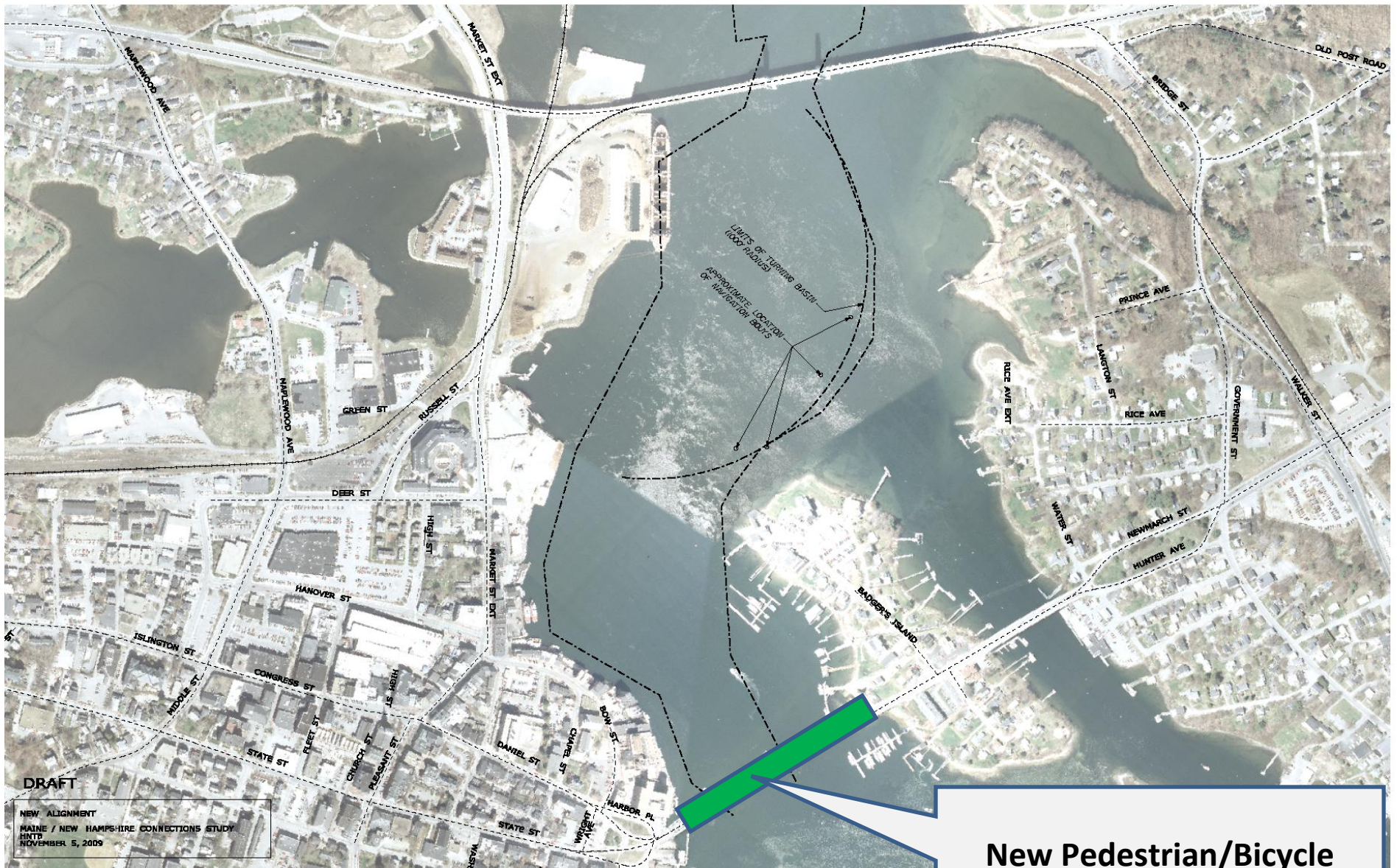
Memorial Bridge Option

MB2 – Replace on Existing Alignment



Memorial Bridge Option

MB6 - Ped/Bike Bridge



DRAFT

NEW ALIGNMENT
MAINE / NEW HAMPSHIRE CONNECTIONS STUDY
HNTH
NOVEMBER 5, 2009

Memorial Bridge Option

New Pedestrian/Bicycle
Bridge on Alignment

SL1 – Rehab on Existing Alignment



Sarah Long Bridge Option

SL2 – Replace on Existing Alignment 2 or 4-lane



Sarah Long Bridge Option

SL2A-Low Level Bridge Upstream 2 or 4-lane



Sarah Long Bridge Option

SL2A-Low Level Bridge Upstream



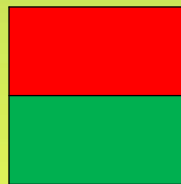
Sarah Long Bridge Option

Fatal Flaw - Round 1, 2, and 3 Results

- Study Team Recommendation :
 - 63 alternatives reduced to 8 alternatives plus No-Build
 - 3 Memorial Bridge options
 - Rehab (2-lane)
 - Low level replacement on existing alignment (2-lane)
 - Bike/Ped Moveable Bridge
 - 3 Sarah Long Bridge Options
 - Rehab (2-lane)
 - Low level replacement on existing alignment (2 and 4 lane)
 - Low level replacement on upstream alignment (2 and 4 lane)

Alternatives formed by combining Bridge Options

Memorial Bridge Options	Sarah Mildred Long Options						
	Rehab	Replacement	Replacement Upstream	Mid-Level	Mid-Level Upstream	High Level	Close but Rail Remains
Rehab							
Replacement (2-lane)							
Replacement Up/Downstream							
Mid-Level Replacement							
Mid-Level Replacement Up/Downstream							
High Level Replacement							
Close Entirely		1					
New Pedestrian/Bicycle Only		2	2	2	2		



Alternative Recommended to be Eliminated

Alternative Recommended to be Carried Forward

1 - Evaluated as both a 2 lane and 4 lane option. Both alternatives were eliminated.

2 - Evaluated as both a 2 lane and 4 lane option. 2 lane option was eliminated, the 4 lane option carried forward.

Detailed Evaluation of Feasible Alternatives

Overview of Detailed Evaluation

- A more detailed evaluation, analysis and assessment of feasible alternatives
- Compare findings to Study Purpose and Need and measure against criteria developed by all
- Criteria not previously assessed will be evaluated
- Work with DOTs, FHWA, SC, SHC, and Public to finalize how criteria should be weighed or scored

Questions/Details for Early Input

- Detail of replacement Memorial bridge?
- If ped/bike Memorial bridge, how will it connect to the communities?
- What additional roadway connections might we need to consider to the 4-lane Sarah Long with the removal of vehicle traffic on the Memorial Bridge?
- What additional roadway connections might improve a rehab or replacement 2-lane Sarah Long Bridge?