

Maine-New Hampshire Connections Study

Steering Committee Kick Off Meeting

May 22, 2009



Meeting Overview

- Welcome and Introductions
- Update on Study Data and Progress
- Committee Roles & Responsibilities
- Decision on Stakeholder Committee makeup
- Draft Purpose and Need Statement
 - Brainstorming Session
- Next Steps

**S
C
H
E
D
U
L
E**

April 2009
May
June
July
August
September
October
November
December
January 2010
February
March
April
May
June

1st PUBLIC MEETING, Data Collection (Traffic, Land Use, Environmental, Navigational)

Ongoing Data Collection, Baseline Traffic Analysis complete, Travel Demand Model, Bridges Inspection, Stakeholder Meeting(s), Develop Draft Purpose and Need Statement

2nd PUBLIC MEETING, Bridge Inspection Data & Baseline Analysis complete, Purpose and Need Statement drafted

3rd PUBLIC MEETING, Identify Full Range of Alternatives, Finalize Purpose and Need Statement, Define Fatal Flaw Analysis,

**Ongoing Fatal Flaw Analysis
Discretionary Stimulus Grant Application due**

4th PUBLIC MEETING, Phase I Fatal Flaw Analysis Completed, Detailed Evaluation of Feasible Alternatives Begins

Federal Stimulus Grant Decisions Made
Ongoing Evaluation of Feasible Alternatives

5th PUBLIC MEETING, Results of Alternatives Analysis, Initial Preferred Alternative

Evaluate Public Feedback on Preferred Alternative

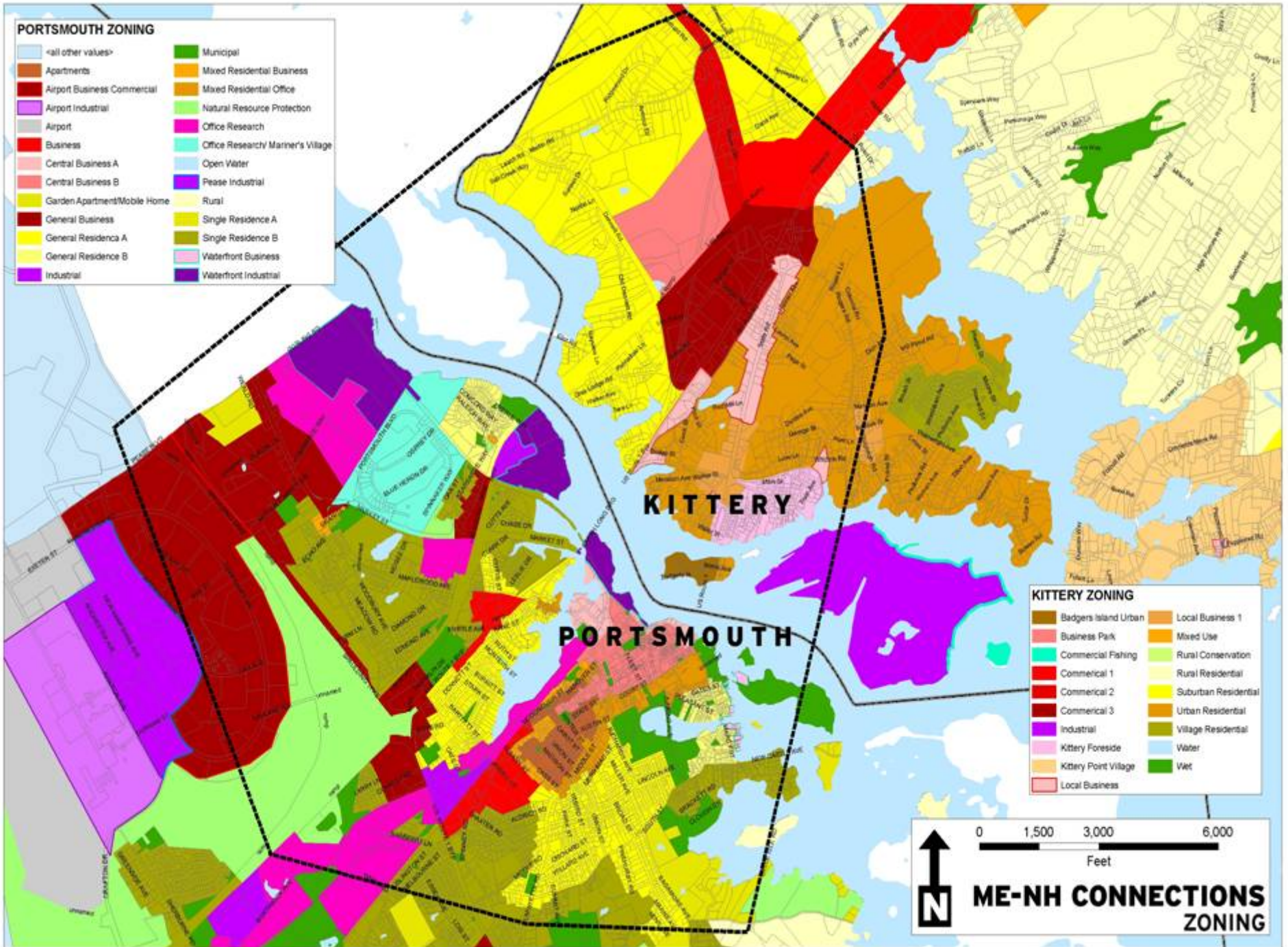
6th PUBLIC MEETING, Draft and Final Report Completed, Section 4(f) Completed,

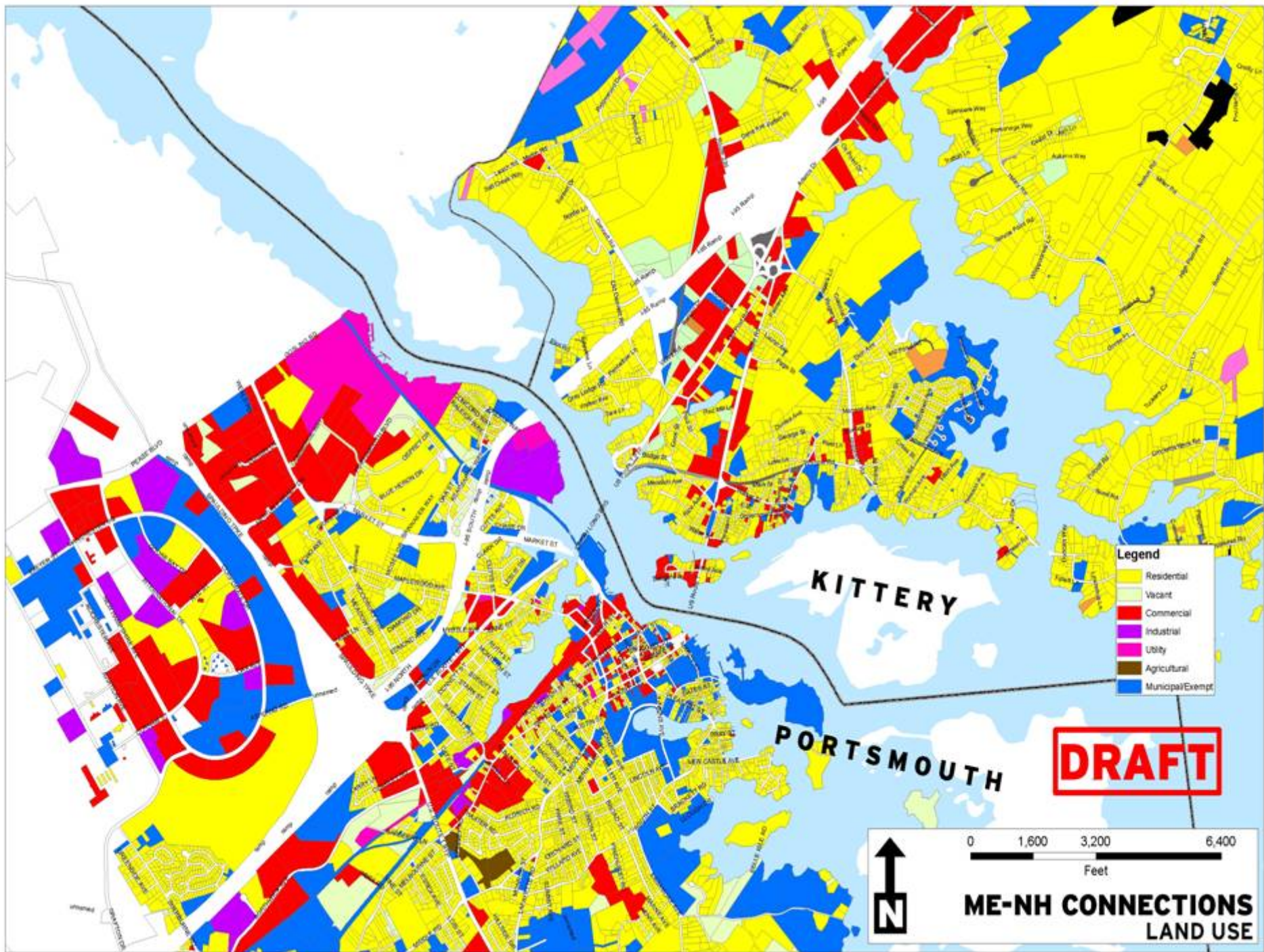
Study Progress

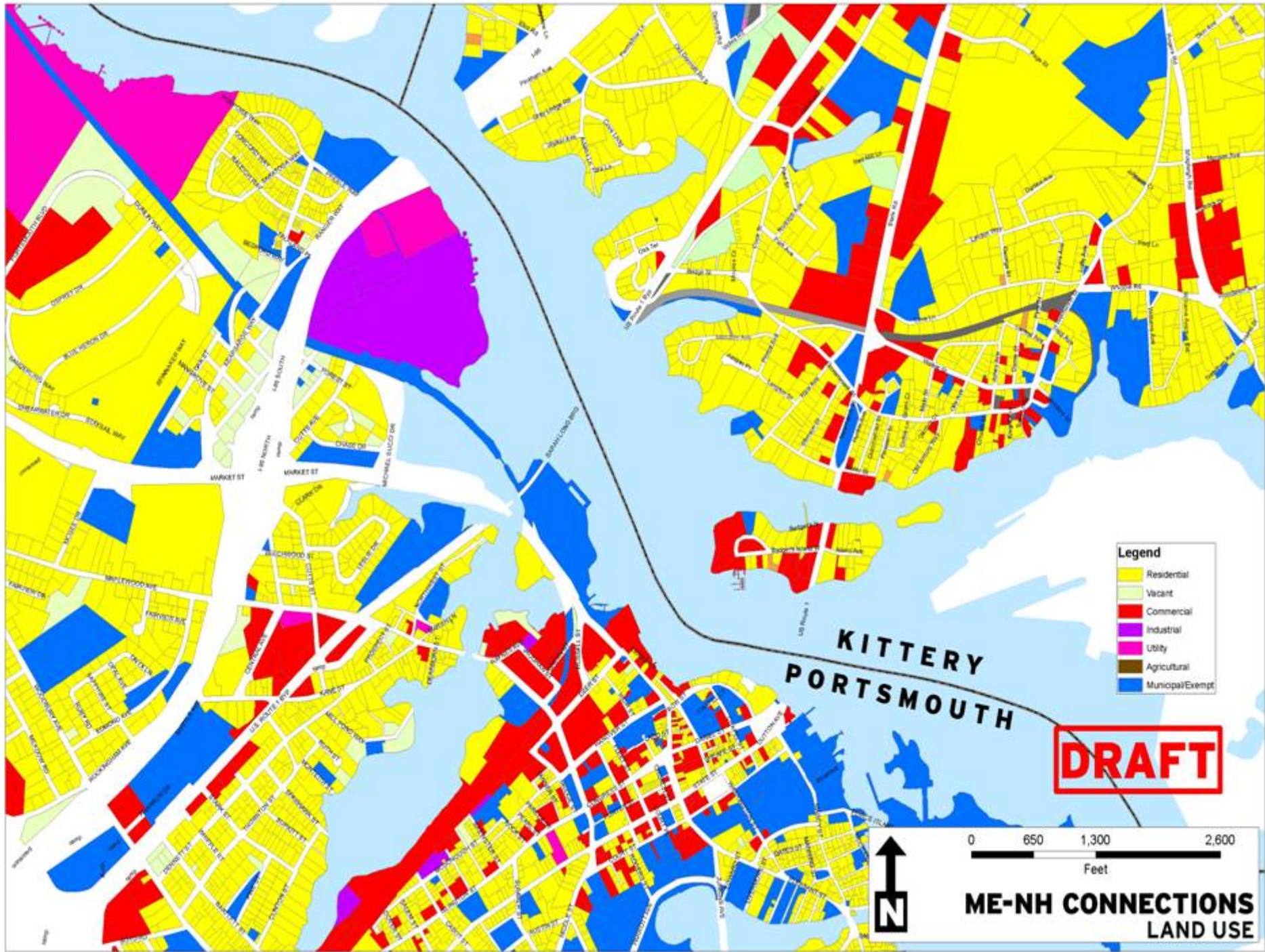
Tasks Completed to Date

- 1st Public Informational Meeting
- Other meetings (PNSY, Communities, SOB)
- Traffic data collection
(turning movement counts, ATR's, bike/ped, crash)
- Origin/Destination Survey
- Noise Data
- Land Use and Zoning data
- Available Parcels and Aerial Mapping









- Legend**
- Residential
 - Vacant
 - Commercial
 - Industrial
 - Utility
 - Agricultural
 - Municipal/Exempt

DRAFT



0 650 1,300 2,600
Feet

**ME-NH CONNECTIONS
LAND USE**

Study Progress

Tasks to be completed in near future

- Travel Demand Model
- Summary of O&D Survey
- Resource mapping
- Historic and Archeological field work
- Full Study Schedule
(Public, SC, Stakeholders, IAC, Section 106, 4(f))
- Navigational
- First Stakeholders Meeting

Steering Committee

Provides guidance and direction to the Study Team regarding findings, conclusions

- **MaineDOT**
- **NH DOT**
- **Maine SHPO**
- **NH SHPO**
- **Town of Kittery**
- **City of Portsmouth**
- **Pan Am Railroad**
- **Portsmouth Naval Shipyard (declined)**
- **Maine FHWA (as resource)**
- **NH FHWA (as resource)**
- **NH and Maine Regional Planning Commissions (as resources)**

Meet 6 or more times during course of Study

Stakeholder Committee

Assists in identifying gaps, interpreting public feedback, evaluating comments, developing next steps

Steering Committee	Ports/Harbors
Historic	Community Groups
Business	Municipalities
Conservation & Sustainability	Emergency Services
Bicycle	Individuals
Pedestrian	Section 106 Consulting Parties
Miscellaneous	

Section 106 Consulting Parties

- Individuals and organizations with direct interest in the project (*36 CFR, Part 800.2.c. – Protection of Historic Properties*)
- Consulting party status entitles these groups to share views, receive and review pertinent information, offer ideas, and consider possible solutions together with the Federal agency and other consulting parties.
- Any member of Stakeholder Committee will have same rights in this Study.
- Will meet separately from Stakeholders Committee

Current

Section 106 Consulting Parties

- State Historic Preservation Offices (SHPOs)
- Applicants for federal funds, licenses, or permits
- Others by formal written request to FHWA

Section 106 Consulting Parties

Consulting Parties

National Trust for Historic Preservation	New Hampshire Preservation Alliance	Portsmouth Cultural Committee
--	-------------------------------------	-------------------------------

Parties to be Invited to be Consulting Parties

Portsmouth Historic District Commission	Kittery Historical Society	Portsmouth Advocates
Strawbery Banke Museum	Portsmouth Athenaeum	Portsmouth Historical Society
Kittery Historical and Naval Museum	Portsmouth Naval Shipyard	Prescott Park Trustees
Warner House Association	Albacore Museum and Park	Langdon House

Evaluate Potential Stakeholder Committee Members

- List of “possibles” has been developed
- Some are confirmed already
- Too many on list - must prioritize
- Criteria:
 - Knowledgeable in their field
 - Respect in their field
 - Committed/enthusiastic about serving
 - Open to listening to data/other opinions

Purpose and Need

- Critical element of Study
- Starting point for development of alternatives
- Clearly addresses the transportation and land use issues
- Clearly state the Study's goals and objectives
- Help guide which alternatives remain

Needs from Public Meetings

- Bike/Ped access should be non-negotiable
- Bike/Ped access attracts tourists
- Bike lanes that meet safety requirements
- Bike lanes on all bridges
- Low bridges = historic appeal
- Historic nature important to region
- Economic link to downtown Kittery from NH
- Economic support for businesses on Rte 103

Needs from Public Meetings

- Must support PNSY needs
- Must accommodate tourism needs
- East Coast Greenway a key link
- Meet evacuation needs
- Need less maintenance in future
- Support rail transportation for future
- Should not solve summer traffic on I-95

Needs Brainstorming

- What are your needs?
- Are needs local or regional?
- To be used to develop draft Purpose and Need statement (June 2009)

Next Steps

- Question/Comments
- Stakeholder Notification/set meeting date
- Next Steering Committee Meeting
- Next Public Informational Meeting
- Other