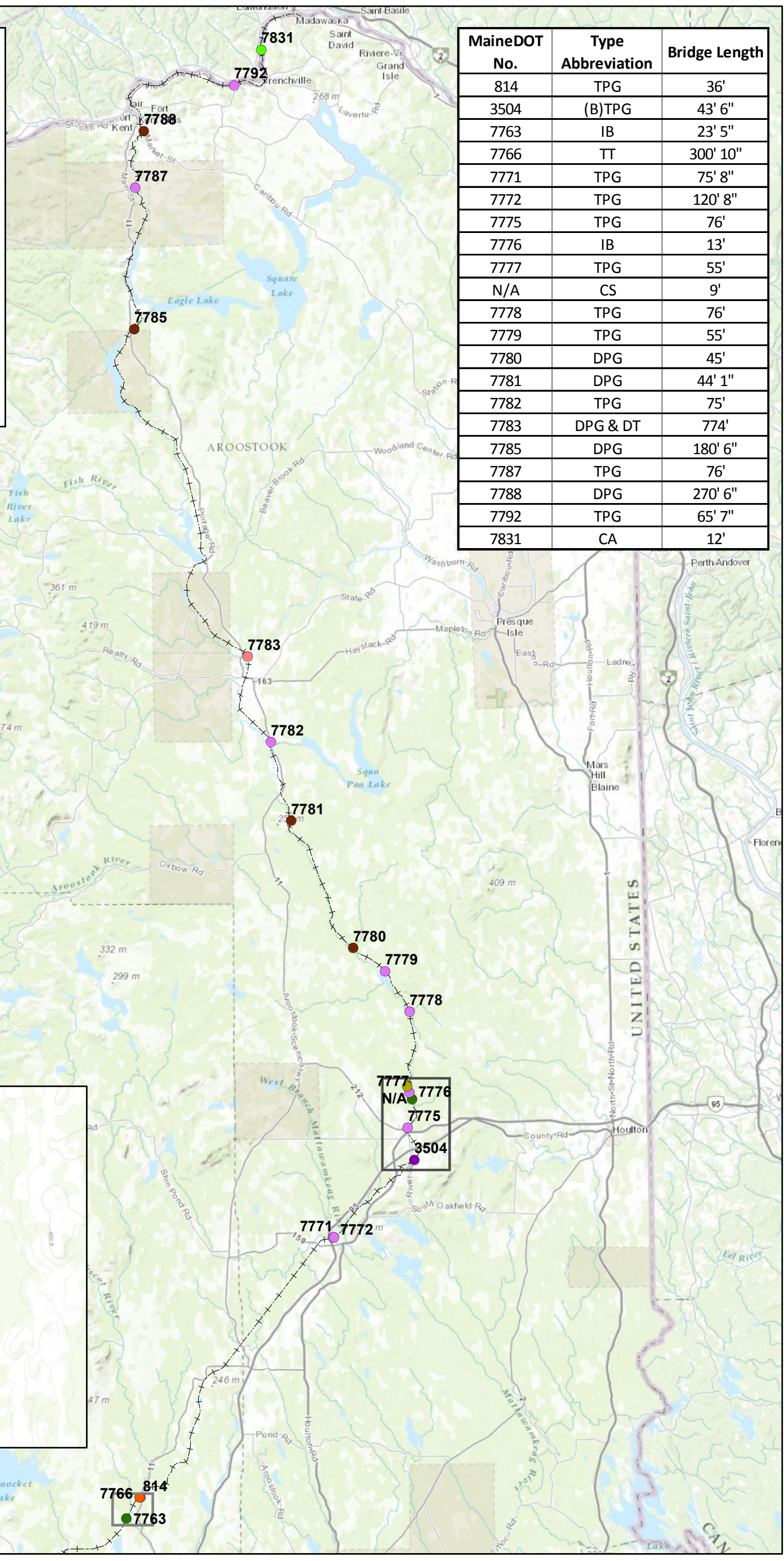
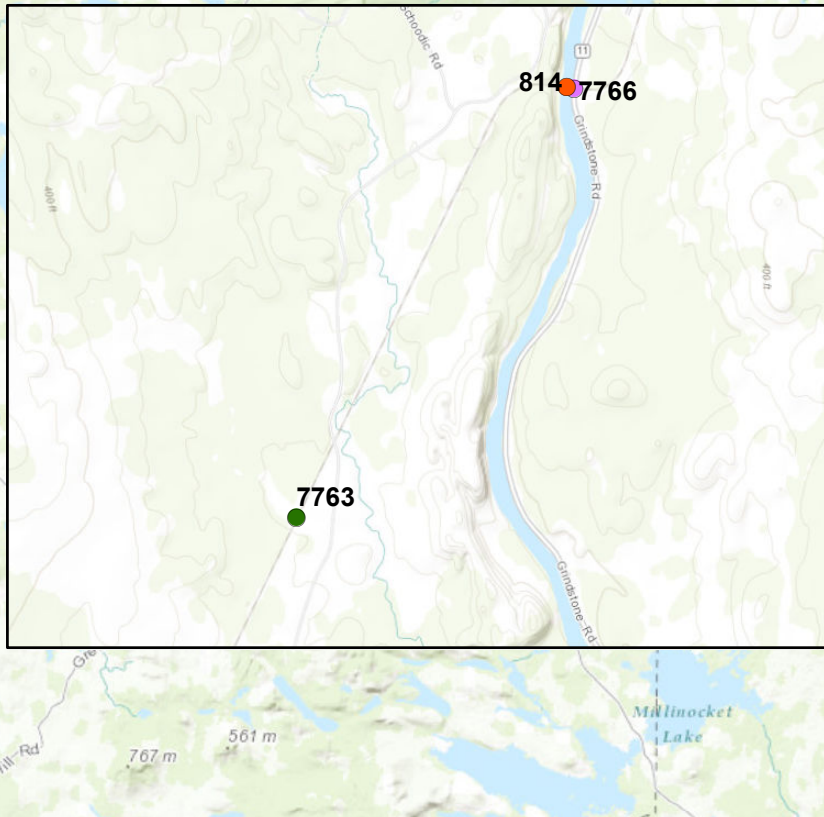
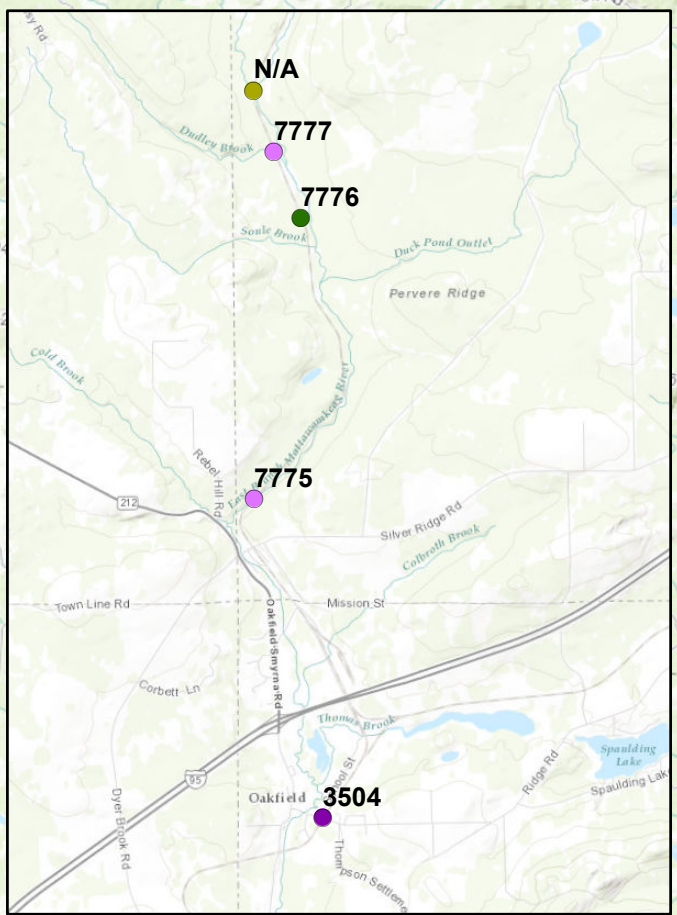


# **Appendix B**

**Bridge Type**

- Ballasted Through Plate Girder
- Concrete Arch
- Deck Plate Girder
- Deck Plate Girder/Deck Truss
- I Beam
- Concrete Slab
- Through Plate Girder
- Through Truss
- ++++ Railroad

MaineDOT No.	Type Abbreviation	Bridge Length
814	TPG	36'
3504	(B)TPG	43' 6"
7763	IB	23' 5"
7766	TT	300' 10"
7771	TPG	75' 8"
7772	TPG	120' 8"
7775	TPG	76'
7776	IB	13'
7777	TPG	55'
N/A	CS	9'
7778	TPG	76'
7779	TPG	55'
7780	DPG	45'
7781	DPG	44' 1"
7782	TPG	75'
7783	DPG & DT	774'
7785	DPG	180' 6"
7787	TPG	76'
7788	DPG	270' 6"
7792	TPG	65' 7"
7831	CA	12'





Bridge Repair/Strengthening Summary



Mile Post	MaineDOT Bridge #	Latitude	Longitude	Town	Feature Crossed	Bridge Type	Bridge Length	No. of Spans	Date Built	Existing Rating Factor (25 MPH)	Strengthening/Repair Construction Cost Estimate
148.70	3504	46.09954	68.153623	Oakfield	Ridge Road	Ballasted Through Plate Girder	43'-6"	1	1941	254	\$170,000
259.11	7831	47.3195444	68.3820444	Frenchville	Gagnon Brook	Concrete Arch	12'	1	Unknown	N/A	\$1,300,000
155.09	N/A	46.1805722	68.1633861	Smyrna	Moose Brook	Concrete Slab	9'	1	1953	142	\$180,000
167.76	7780	46.332931	68.246743	St. Croix Township	Beaver Brook	Deck Plate Girder	45'	1	1896	205	\$230,000
179.34	7781	46.473017	68.343496	Masardis	North Branch Blackwater River	Deck Plate Girder	44'-1"	1	1896	205	\$170,000
193.50	7783	46.653846	68.410488	Ashland	Sheridan Road	Deck Plate Girder	166'	4	1902	205	\$620,000
224.51	7785	47.013926	68.589094	Eagle Lake	Fish River	Deck Plate Girder	180'-6"	2	1902	350	\$560,000
241.83	7788	47.230888	68.57183	Fort Kent	Fish River	Deck Plate Girder	270'-6"	3	1902	350	\$1,600,000
193.50	7783	46.653846	68.410488	Ashland	Aroostook River	Deck Truss	608'-8"	4	1902	222	\$4,510,000
111.14	7763	45.70846	68.61059	Grindstone	South Meadow Brook	I-Beam	23'-5"	1	1893	229	\$360,000
154.04	7776	46.166269	68.156074	Smyrna	Soule Brook	I-Beam	13'	1	1896	189	\$260,000
151.54	7775	46.135106	68.164011	Smyrna Mills	East Branch Mattawamkeag River	Through Plate Girder	76'	1	1896	235	\$240,000
154.59	7777	46.173709	68.160252	Smyrna	Dudley Brook	Through Plate Girder	55'	1	1896	228	\$290,000
161.03	7778	46.262577	68.158331	Dudley Township	Smith Brook	Through Plate Girder	76'	1	1896	235	\$390,000
164.74	7779	46.307239	68.19695	St. Croix Township	Howe Brook	Through Plate Girder	55'	1	1896	228	\$190,000
185.84	7782	46.559522	68.374927	Masardis	Squapan Stream	Through Plate Girder	75'-1"	1	1896	233	\$250,000
236.44	7787	47.168749	68.586149	Wallagrass	Wallagrass Stream	Through Plate Girder	76'	1	1902	287	\$440,000
253.87	7792	47.280773	68.425621	Frenchville	Dickey Brook	Through Plate Girder	65'-7"	1	1910	260	\$390,000
139.56	7771	46.015203	68.283182	Island Falls	Fish River	Through Plate Girder	75'-8"	1	1914	264	\$190,000
139.66	7772	46.015743	68.281283	Island Falls	West Branch Mattawamkeag River	Through Plate Girder	120'-8"	2	1930	350	\$170,000
113.14	814	45.731603	68.588996	Grindstone	Route 11	Through Plate Girder	36'	1	Unknown	210	\$230,000
113.14	7766	45.731658	68.589573	Grindstone	East Branch Penobscot River	Through Truss	300'-10"	2	1925	350	\$500,000

Prepared By:



























