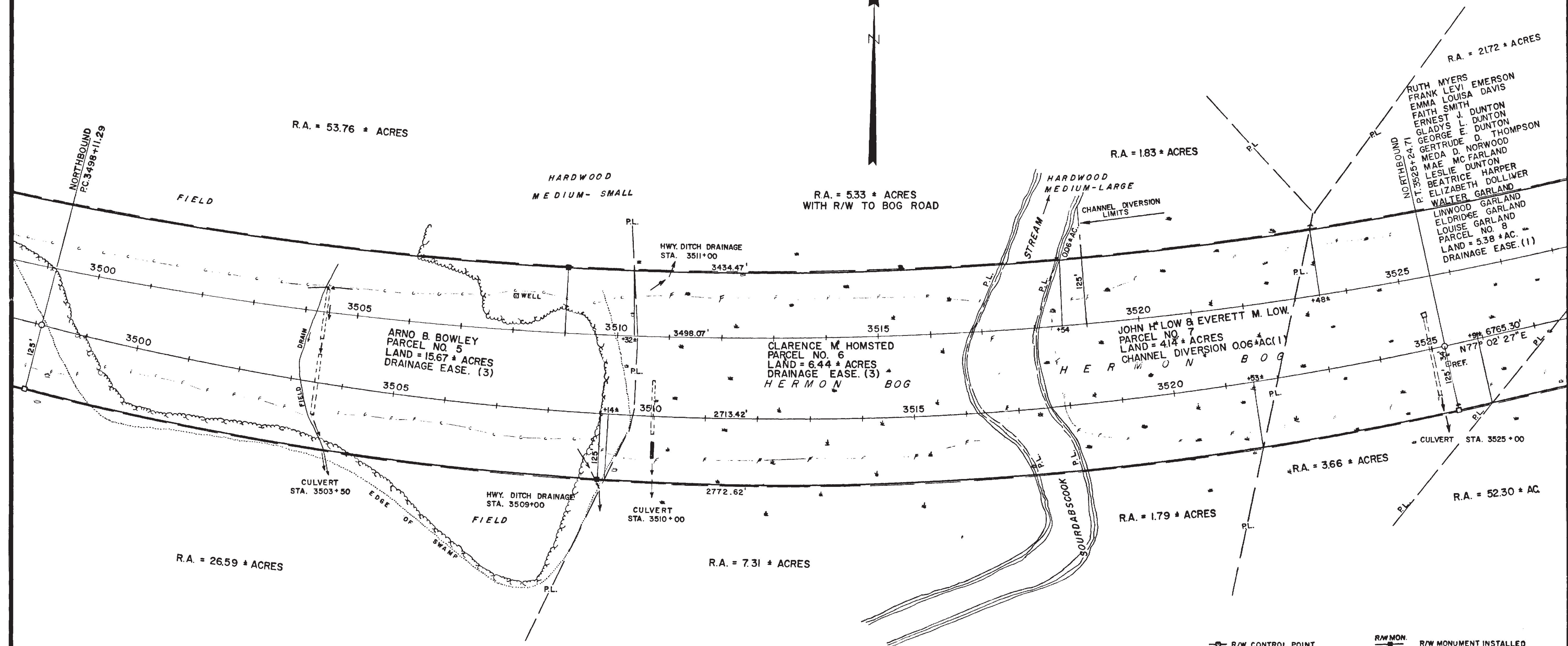


NORTHBOUND	SOUTHBOUND
Δ = 27° 08' 03" LT.	Δ = 29° 09' 02" LT.
D = 1° 00'	D = 0° 50'
T = 1382.64'	T = 1787.765'
L = 2713.42'	L = 3498.07'
R = 5729.58'	R = 6875.496'
E = 164.47'	E = 228.617'



REVISIONS	NO.	DATE	DESCRIPTION	BY
1				
2				
3				
4				
5				

ITEM	FIGURED	NOTED	CHECKED
BASE LINE			
ADJ. L.			
TOPOGRAPHY			
R/W LINES			
AREAS			
R/W MON.			
OD. RECORD			

CONTROLLED ACCESS LIMIT
 CONTROLLED ACCESS LIMIT LINE
 ALONG R/W LINE
 R/W LINE — A —
 CONTROLLED ACCESS LIMIT LINE NOT
 ON R/W LINE — B —
 NO ACCESS WILL BE PERMITTED TO
 OR FROM STATE HIGHWAY "95" AND
 ADJOINING PROPERTIES WITHIN
 BOUNDARIES DEFINED BY
 CONTROLLED ACCESS LIMIT LINES

PLAN FILED IN PLAN BOOK 25 PAGE 6

NO.	GRANTOR	INSTRUMENT	DATE	BOOK	PAGE
5	ARNO B. BOWLEY	CONDEMNATION	8-30-61	1799	113
6	CLARENCE M. HOMSTED	CONDEMNATION	8-30-61	1799	113
7	JOHN H. & EVERETT M. LOW	CONDEMNATION	8-30-61	1799	113
8	RUTH MYERS ET ALS	CONDEMNATION	8-30-61	1799	113

MAINE STATE HIGHWAY COMMISSION
RIGHT OF WAY MAP

STATE HIGHWAY "95"

HAMPDEN PENOBSCOT COUNTY
 FEDERAL AID PROJECT I-95-7 (14)

APPROVED: DAVID H. STEVENS CHAIRMAN
 PERRY S. FURBUSH
 R. LEON WILLIAMS
 S.H.G. FILE NO. 10-128

DATE: AUGUST 1961
 SCALE: 1 INCH = 100 FEET
 SHEET NO. 33 OF 46 SHEETS