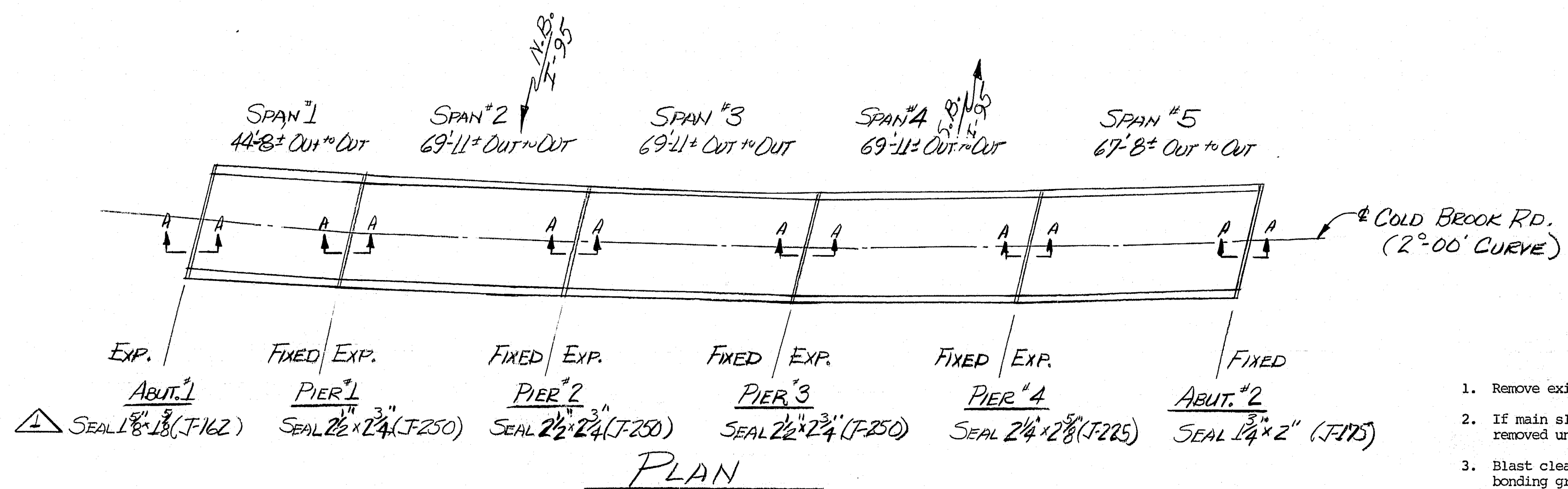


P.A.M.A. NO.	STATE	PROJECT NUMBER	SHEET NO.	TOTAL SHEETS
1	MAINE			



SCOPE OF WORK

REMOVE EXISTING BIT WEARING SURFACE AND MEMBRANE.
 MODIFY ARMORED JOINTS & INSTALL SEALS AS FOLLOWS:
 ABUT. #1: USE SEAL J-162 x 39"0 MOVE EXIST. JOINT
 PIER #1: USE SEAL J-250 x 39"0 MOVE 1/2 OF EXIST. JOINT.
 PIER #2: USE SEAL J-250 x 39"0 MOVE 1/2 OF EXIST. JOINT.
 PIER #3: USE SEAL J-250 x 39"0 MOVE 1/2 OF EXIST. JOINT.
 PIER #4: USE SEAL J-225 x 39"0 MOVE 1/2 OF EXIST. JOINT.
 ABUT. #2: USE SEAL J-175 x 39"0 DO NOT MOVE EXIST. JOINT
 PLACE NEW 2 1/2" BONDED CONC. WEAR SURFACE.

GENERAL NOTES

- Remove existing wearing surface.
- If main slab steel is exposed, concrete should be removed under the steel to a depth of 1" minimum.
- Blast clean the slab before any placement of bonding grout or concrete. NOTE: Slab is to be surface dry before placement of bonding grout.
- Broom on a layer of bonding grout just prior to placing concrete. See note this sheet for bonding grout specifications.
- Concrete to be cured using burlap and water or other approved methods.
- Concrete to be Class "V" and aggregate to be crushed ledge.
- Minimum cover to be 2" unless otherwise noted.
- Chamfer all exposed edges 1/4" unless otherwise noted.

BONDING GROUT

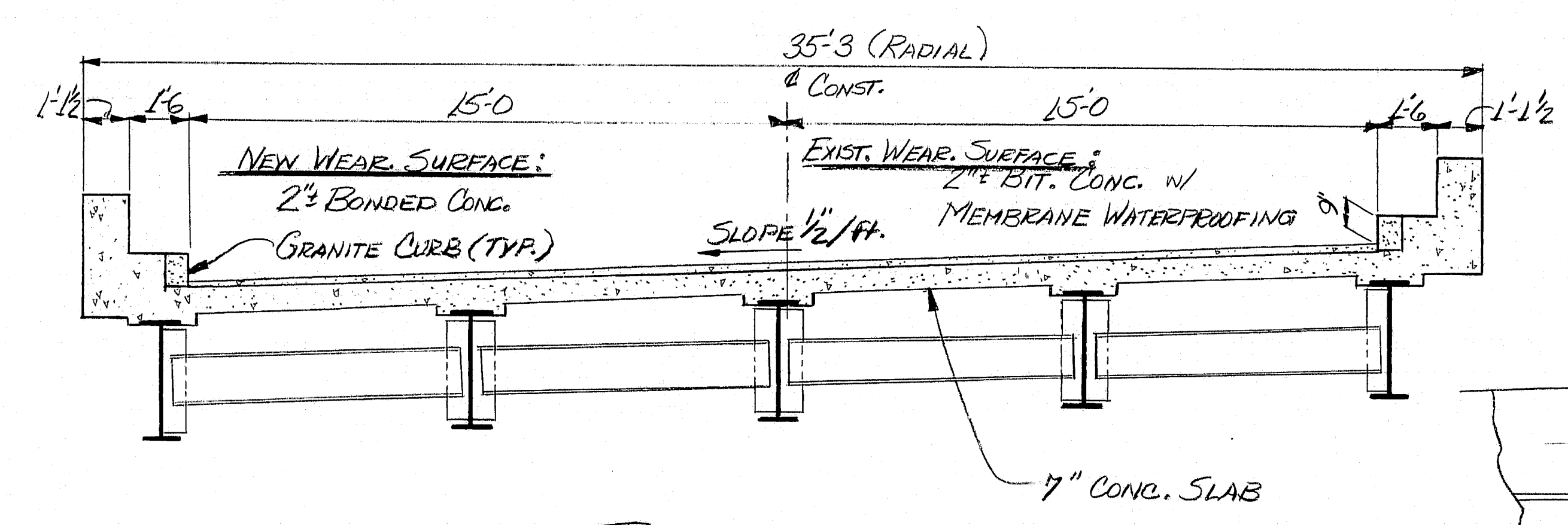
The deck surface must be thoroughly sandblasted and cleaned to remove all dust or loose materials immediately before bonding grout is placed.
 Deck surface to be surface dry with no standing water in pockets or low areas when bonding grout is applied.
 The bonding grout shall consist of equal parts by weight of Portland Cement and concrete sand with the plus #8 material removed and mixed with enough water to give a thick creamy consistency.
 Bonding grout to be evenly broomed onto the concrete surface ensuring that the entire surface is coated and that no excess grout collects in low spots or pockets. Grout shall be thoroughly broomed under and around reinforcing.
 Rate of application must be controlled so that the grout does not dry before the new concrete is placed.

MATERIALS

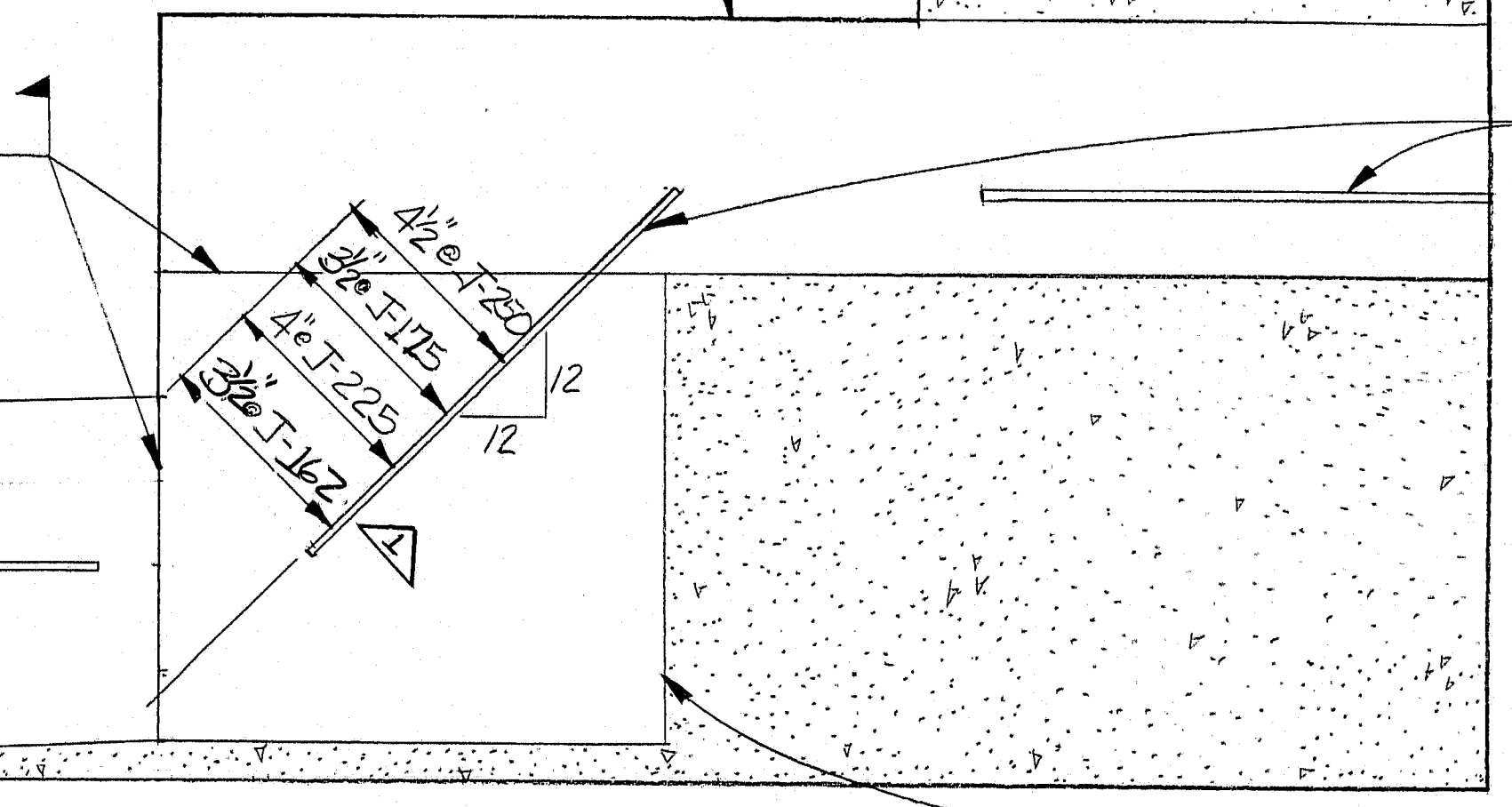
- ONE ROAD-PREFORMED JOINT SEAL 1 1/2" x 1/2" x 39"0 (J-162)
- ONE ROAD-PREFORMED JOINT SEAL 2 1/4" x 2 1/2" x 39"0 (J-225)
- ONE ROAD-PREFORMED JOINT SEAL 1 3/4" x 1 3/4" x 39"0 (J-175)
- 3 ROAD-PREFORMED JOINT SEAL 2 1/2" x 2 1/4" x 39"0 (J-250)
- 24 #1 - 12" x 11"
- 168 #1 - BAR 1/4" x 1/4" C.R. SQUARE (KEEPERS)
- 168 #1 - 1/2" x 6" MACH. BOLTS (ANCHORS IN CURBS)
- 83 #1 - BAR 6" x 1/2"

CONCRETE EST.

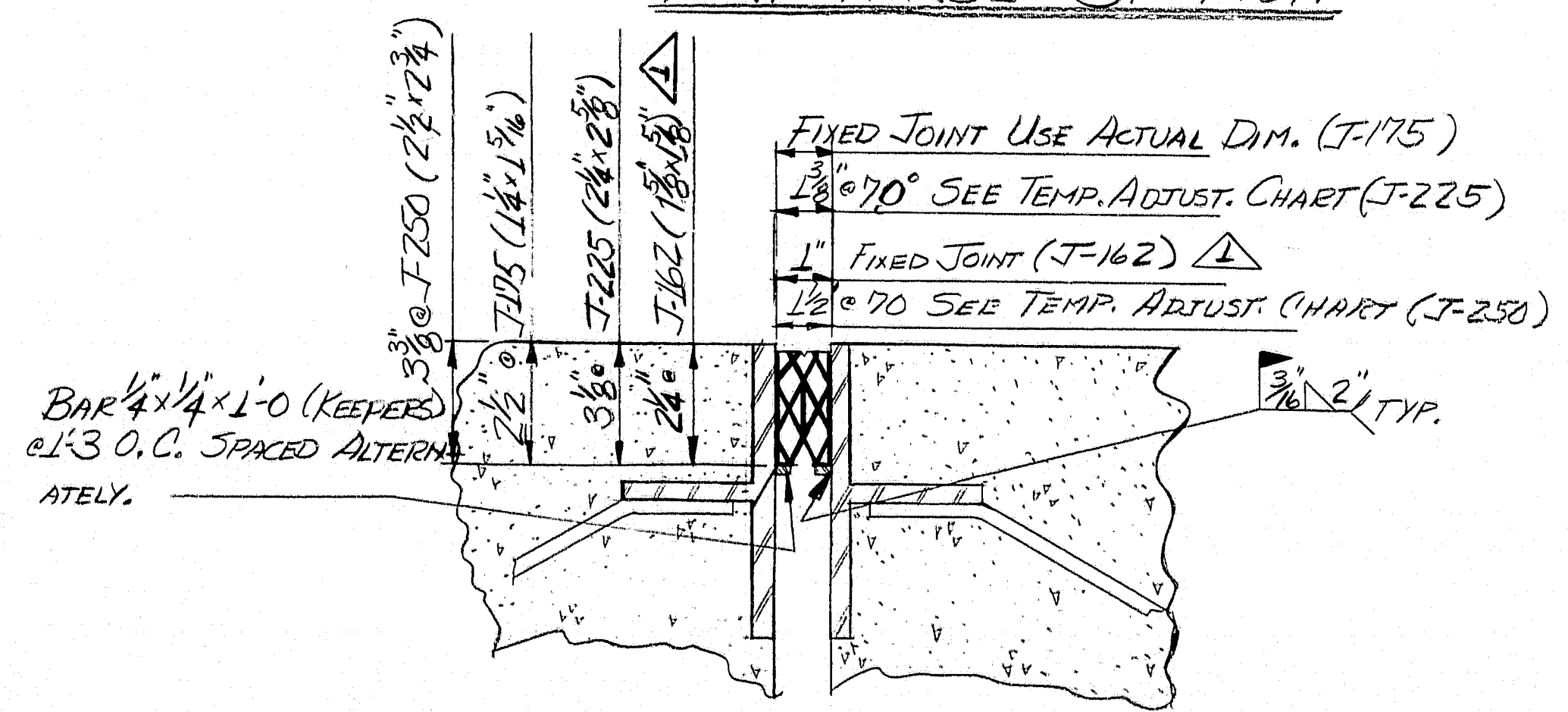
2083 x 326' x 30.5' = 76.7 cy. SAY 77.0 cy.
 27
 CON. EST. BASED ON 2 1/2" DEPTH



TRANSVERSE SECTION



SECTION THROUGH ARMORED JOINT IN CURB



SECTION A-A

FOR USE WITH PIER #4 ONLY

TEMPERATURE ADJUSTMENT TABLE	
TEMP	5° 15° 25° 35° 45° 55° 65° 75° 85° 95°
OPENING	1 1/8" 1 1/4" 1 3/8" 1 1/2" 1 5/8" 1 3/4" 1 7/8" 1 7/8" 1 7/8" 1 7/8"

* ALL DIMENSIONS ARE NORMAL TO JOINT.

FOR USE WITH PIERS #1, 2 & 3

TEMPERATURE ADJUSTMENT TABLE	
TEMP	5° 15° 25° 35° 45° 55° 65° 75° 85° 95°
OPENING	1 1/8" 1 1/4" 1 3/8" 1 1/2" 1 5/8" 1 3/4" 1 7/8" 1 7/8" 1 7/8" 1 7/8"

* ALL DIMENSIONS ARE NORMAL TO JOINT.

NOTE:
 WELD 1/2" x 6" MACH. BOLTS TO BACK OF 1/2" PLATES @ 1'-0" O.C. ALTERNATE 2" FROM TOP THEN 2" FROM BOTTOM.

6-15-84 CHANGE SEAL J-250 TO J-162 (P2)

PROJECT NUMBER	DATE
DESIGN - DETAILED	7-25-82
REVISIONS	
FIELD CHANGES	

STATE OF MAINE
 DEPARTMENT OF TRANSPORTATION
 #5970
 COLD BROOK RD. BRIDGE
 OVER
 I-95
 IN THE TOWN OF
 HAMPDEN
 IN
 PENOBSCOT COUNTY
 SHEET 2 OF 2 AUGUSTA, MAINE JULY 25, 1982

96-388