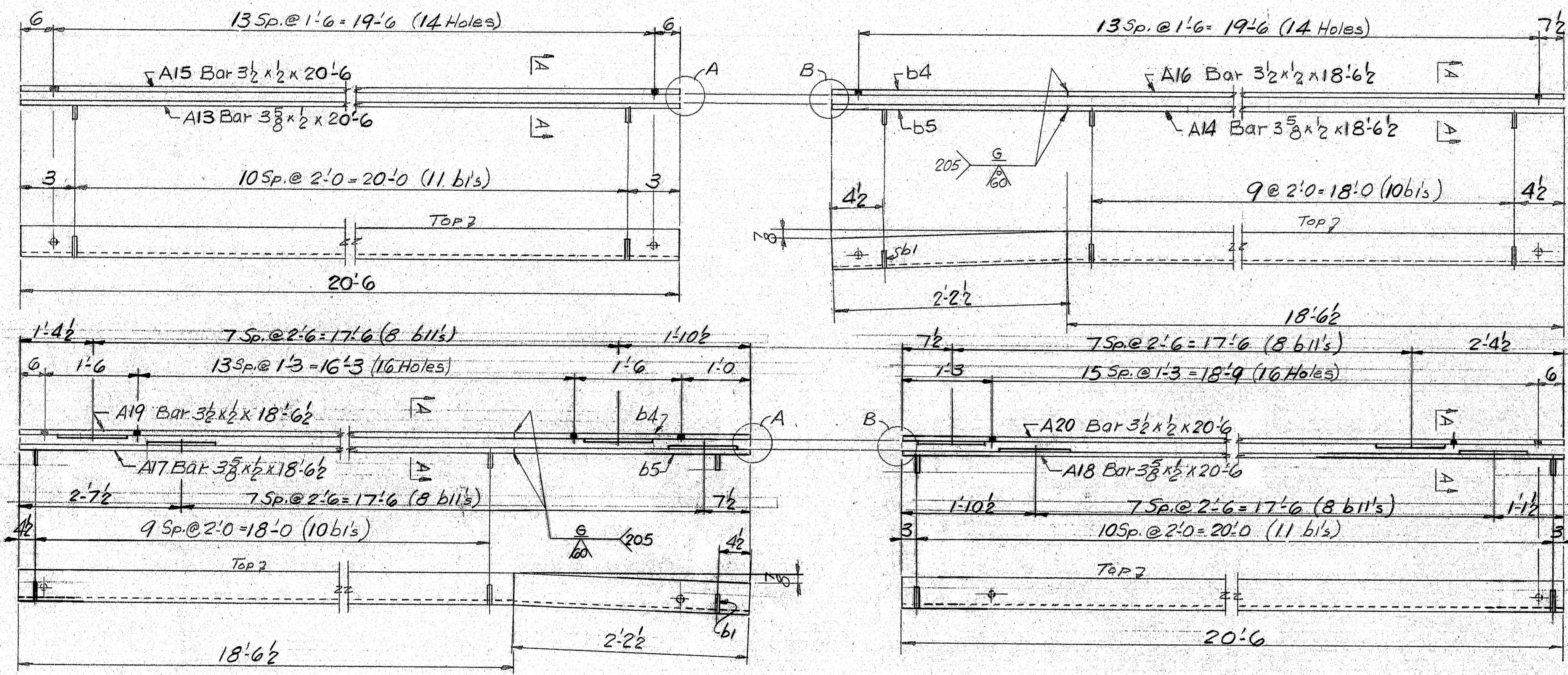
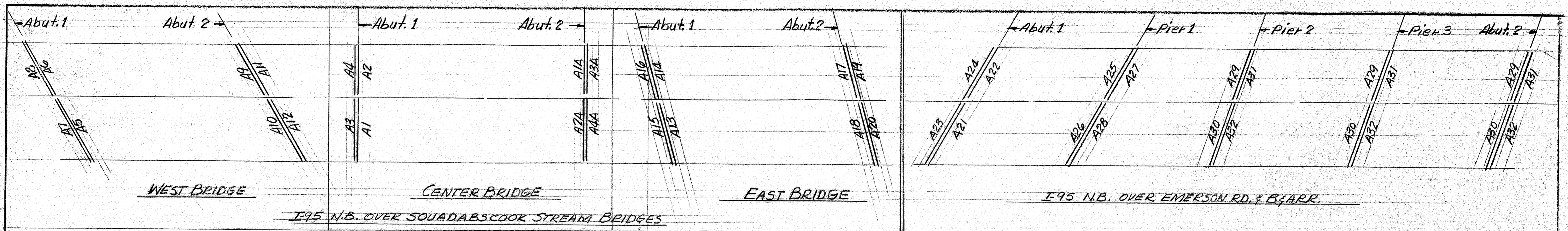
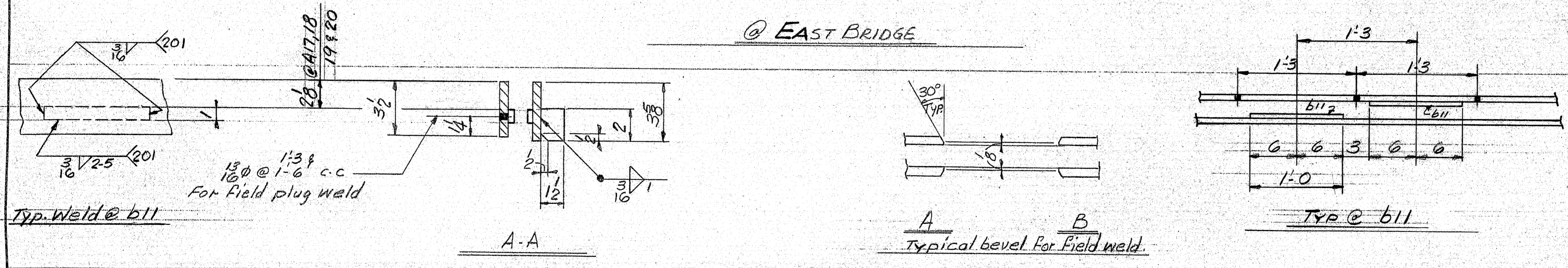


SHIP		BILL OF MATERIAL		JOB NO.		DRAWING NO.		REV.	
				8-74		58-1		△	
MARK	NO.	MARK	SHAPE	LENGTH	WT.	ITEM NO.	REMARKS		
A1	1		Bar 3 3/8 x 1/2	19 11		B-1			
A2	1		Bar 3 3/8 x 1/2	19 11		B-1			
A3	1		Bar 3 1/2 x 1/2	19 11		F-1			
A4	1		Bar 3 1/2 x 1/2	19 11		F-1			
A5	1		Bar 3 3/8 x 1/2	23 0 1/2		A-1			
A6	1		Bar 3 3/8 x 1/2	20 8 1/4		A-1			
A7	1		Bar 3 1/2 x 1/2	23 0 1/2		E-1			
A8	1		Bar 3 1/2 x 1/2	20 8 1/4		E-1			
A9	1		Bar 3 3/8 x 1/2	20 8 1/4		A-1			
A10	1		Bar 3 3/8 x 1/2	23 0 1/2		A-1			
A11	1		Bar 3 1/2 x 1/2	20 8 1/4		E-1			
A12	1		Bar 3 1/2 x 1/2	23 0 1/2		E-1			
A13	1		Bar 3 3/8 x 1/2	20 6		C-1			
A14	1		Bar 3 3/8 x 1/2	18 6 1/2		C-1			
A15	1		Bar 3 3/8 x 1/2	20 6		G-1			
A16	1		Bar 3 3/8 x 1/2	18 6 1/2		G-1			
A17	1		Bar 3 3/8 x 1/2	18 6 1/2		C-1			
A18	1		Bar 3 3/8 x 1/2	20 6		C-1			
A19	1		Bar 3 3/8 x 1/2	18 6 1/2		G-1			
A20	1		Bar 3 3/8 x 1/2	20 6		G-1			
A21	1		Bar 5 x 2	23 8 3/4		J-1			
A22	1		Bar 5 x 2	21 3 3/4		J-1			
A23	1		Bar 4 3/4 x 2	23 8 3/4		H-1			
A24	1		Bar 4 3/4 x 2	21 3 3/4		H-1			
A25	1		Bar 5 x 2	21 3 3/4		J-1			
A26	1		Bar 5 x 2	23 8 3/4		J-1			
A27	1		Bar 4 3/4 x 2	21 3 3/4		H-1			
A28	1		Bar 4 3/4 x 2	23 8 3/4		H-1			
A29	3		Bar 5 x 2	19 0 3/4		K-1			
A30	3		Bar 5 x 2	21 2 3/4		K-1			
A31	3		Bar 4 3/4 x 2	19 0 3/4		I-1			
A32	3		Bar 4 3/4 x 2	21 2 3/4		I-1			
b1	132		Bar 1 1/2 x 3/8	0 2		D-1			
b2	2		Bar 3 3/8 x 1/2	2 3 1/2		A-1			
b3	2		Bar 3 3/8 x 1/2	2 3 1/2		E-1			
b4	2		Bar 3 3/8 x 1/2	2 2 1/2		C-1			
b5	2		Bar 3 3/8 x 1/2	2 2 1/2		G-1			
b6	2		Bar 5 x 2	2 4 1/2		J-1			
b7	2		Bar 4 3/4 x 2	2 4 1/2		H-1			
b8	3		Bar 4 3/4 x 2	2 1 1/2		I-1			
b9	3		Bar 5 x 2	2 1 1/2		K-1			
b10	114		Bar 2 3/4 x 1/8	0 2 3/4		L-1			
b11	240		Bar 1 1/2 x 3/8	1 0		M-1			
b12	32		Bar 1 1/2 x 3/8	1 0		M-1			
Above E.O.M. covers Oug. 58-2, 3 & 4 also.									
IT. NO. 504-7801		BR. NO.		PROJ. NO. 701-95-7 (P)					
504-7802				701-707-95-7 (P)					
FOR APPROVAL				FOR FILES & FIELD					
STEEL: ASTM. <input checked="" type="checkbox"/> A36 <input type="checkbox"/> A572 GR1 <input type="checkbox"/> A888 GR1 <input type="checkbox"/> Unless Noted									
WELDING ELECTRODE: <input type="checkbox"/> E70 <input checked="" type="checkbox"/> See Welding Proc. <input type="checkbox"/> None									
SHOP CONN: <input type="checkbox"/> Bolted <input checked="" type="checkbox"/> Welded <input type="checkbox"/> None									
FIELD CONN: <input type="checkbox"/> Bolted <input checked="" type="checkbox"/> Welded <input type="checkbox"/> None									
HOLES: <input checked="" type="checkbox"/> 13/16 <input type="checkbox"/> 15/16 <input type="checkbox"/> Unless Noted <input type="checkbox"/> None									
PAINT: <input checked="" type="checkbox"/> None <input type="checkbox"/> Shopcoat <input type="checkbox"/> Galv. After Fab. <input type="checkbox"/> As Noted									
SPECIAL PAINT: <input type="checkbox"/> None <input type="checkbox"/> As Noted									
SPECIAL CLEANING: <input checked="" type="checkbox"/> Blast Clean <input type="checkbox"/> None <input type="checkbox"/> SSPC-SP10									
ARMORED JOINTS @ WEST & CENTER BRIDGE									
APPROVED 1-17-79		PRINT DIST.							
2 12-1-78 APP.		Barcroft & Martin Inc.							
3 126-79 FAB.		South Portland, Maine 04106							
2 126-79 F&B.		JOB: REHABILITATION OF FOUR							
2 15-78 FA		BRIDGE DECKS, HAMDEN, ME							
CUSTOMER: REED & REED									
DESIGNER: ME, D.O.T. BRIDGE DIV.									
REV. △		ORDER NO.		JOB NO.		DRAWING NO.		REV.	
CHECKED				8-74		58-1		△	
DRAWN		R&M							



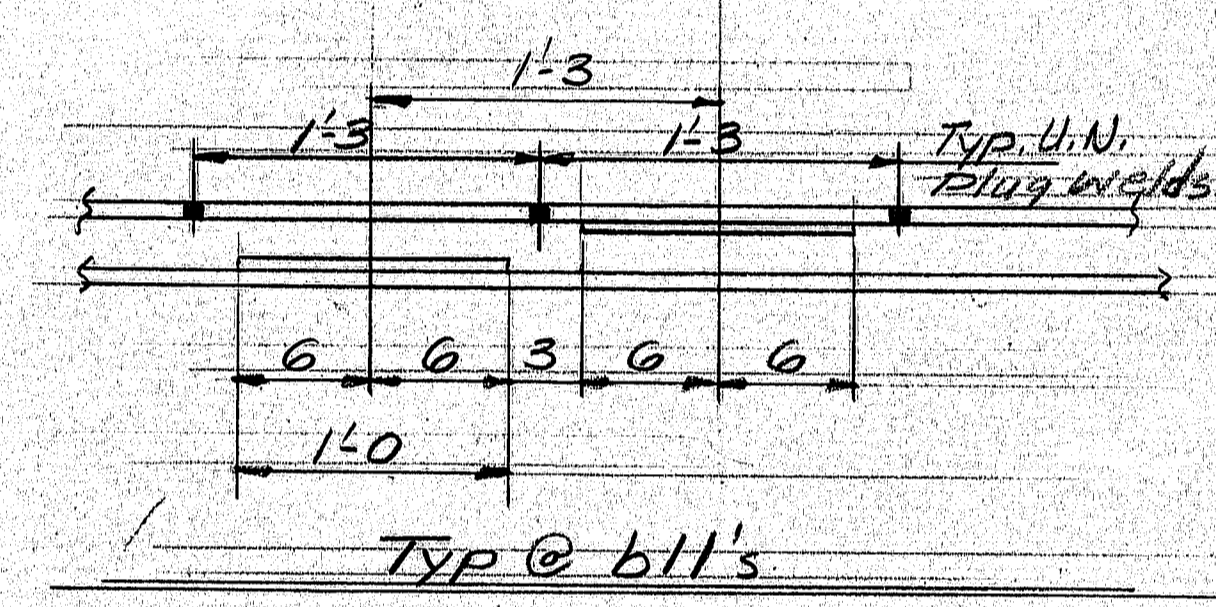
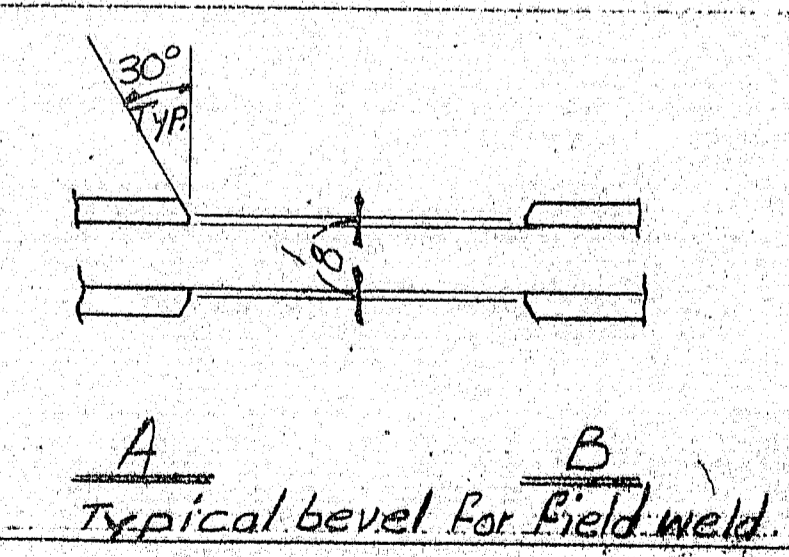
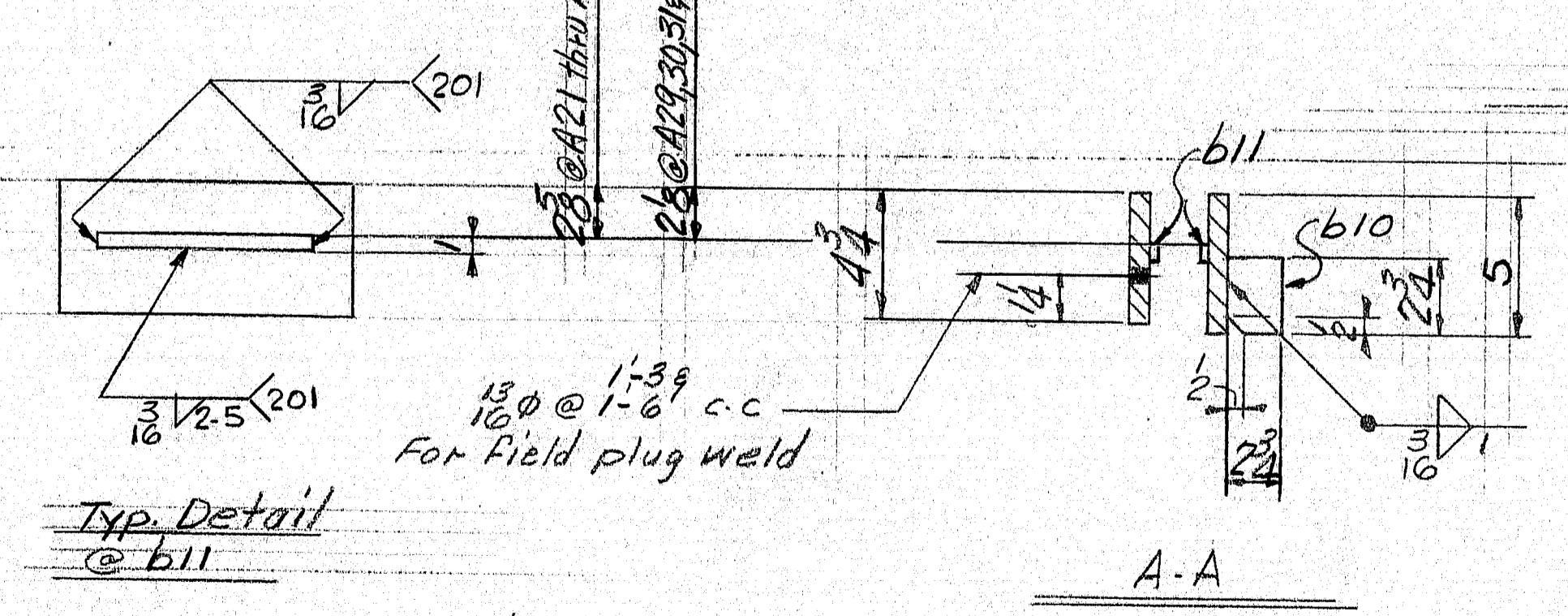
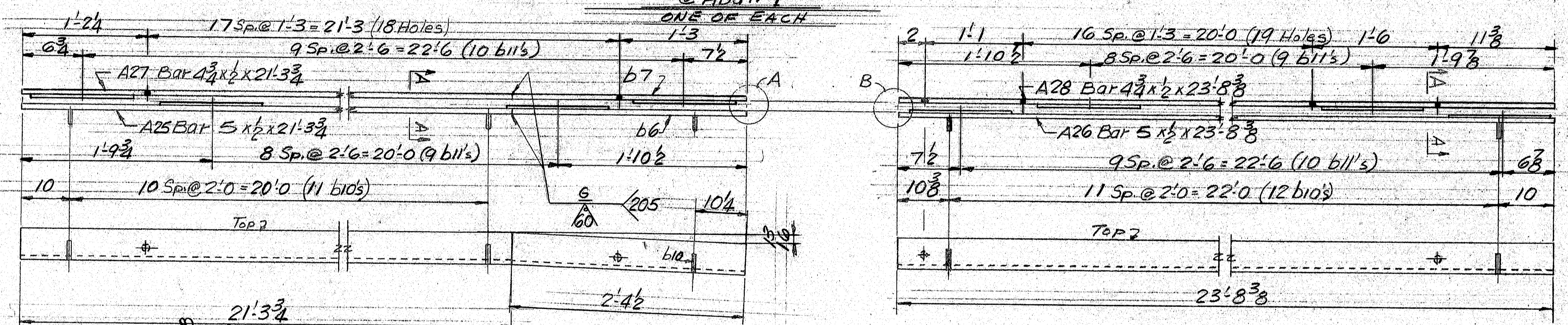
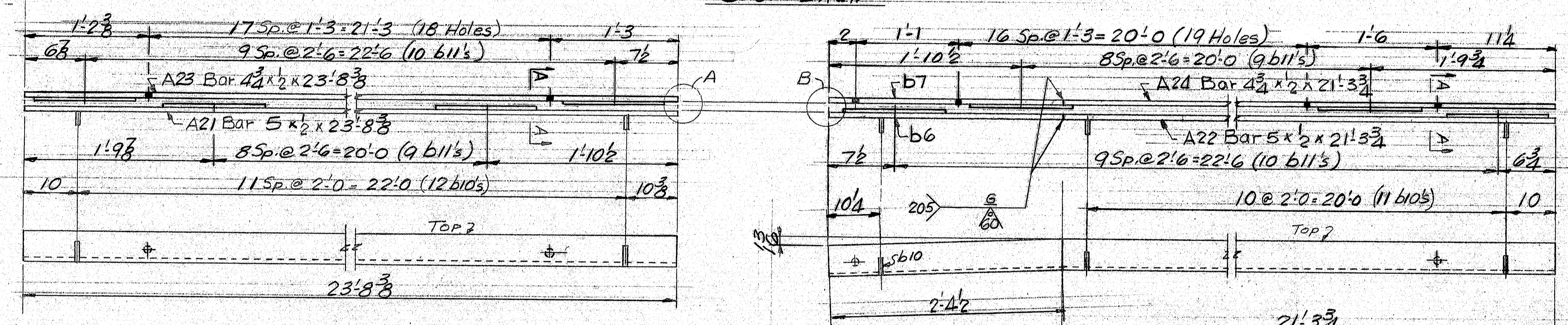
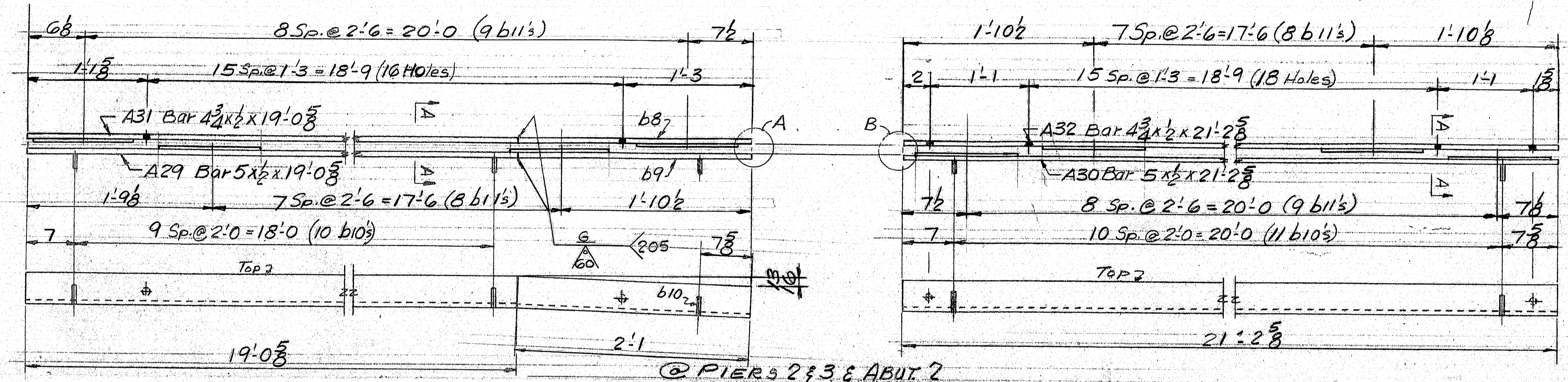
FOR REED & REED USE		
ARMORED JOINT SEALS		
DEPT.	LOCATION	SEAL
I-95 N.B. OVER SQUADABSCOOK STREAM		
38	Abut. 1, West, Center & East Bridges	D.S. BROWN H2500
28	Abut. 2, West & East Bridges	ACMASEAL J162
28	Abut. 2, Center Bridge	ACMASEAL J200
I-95 N.B. OVER EMERSON MILL ROAD & B.F.A. RAILROAD		
DEPT.	LOCATION	SEAL
28	Abut. 1 & Piers 1, 2 & 3	ACMASEAL J200
28	Abut. 2	ACMASEAL J162



B.O.M. & General notes on dwg. 58-1
 TQI-95-7 (79) TQI-TQIG 95-7 (80)
 FRAMING PLAN FOR ALL JOINTS
 ARMORED JOINTS EAST BRIDGE

APPROVED: 1-17-79	Bancroft & Martin Inc	
PRINT DIST.	South Portland, Maine 04106	
2 12-1-78 APP.	JOB: REHABILITATION OF FOUR	
3 1-26-79 FAB.	BRIDGE DECKS, HAMDEN, ME.	
2 1-26-79 FB.F.	CUSTOMER: REED & REED	
2 Sepas 1-5-78 FA.	DESIGNER: ME. D.O.T. BRIDGE DIV.	
REV. Δ	ORDER NO.	JOB NO.
CHECKED		8-74
DRAWN		58-2

160-75

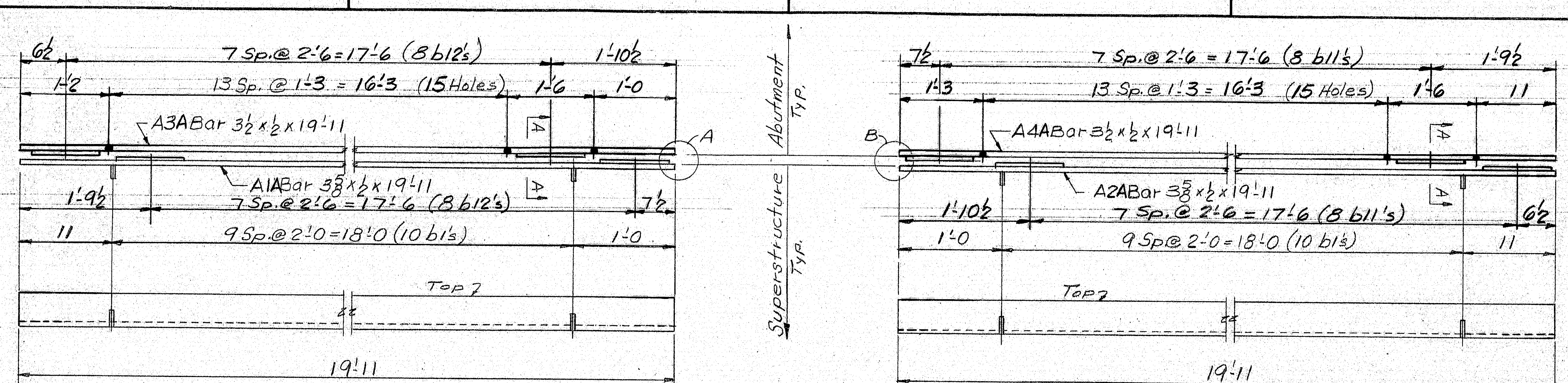


B.O.M. & General notes on dwg. 58-1
For locations see dwg. 58-2
101-95-7(79) TQI-TQIG 95-7 (80)
ARMORED JOINTS @ I95 N.B. OVER EMERSON RD. & BRACE

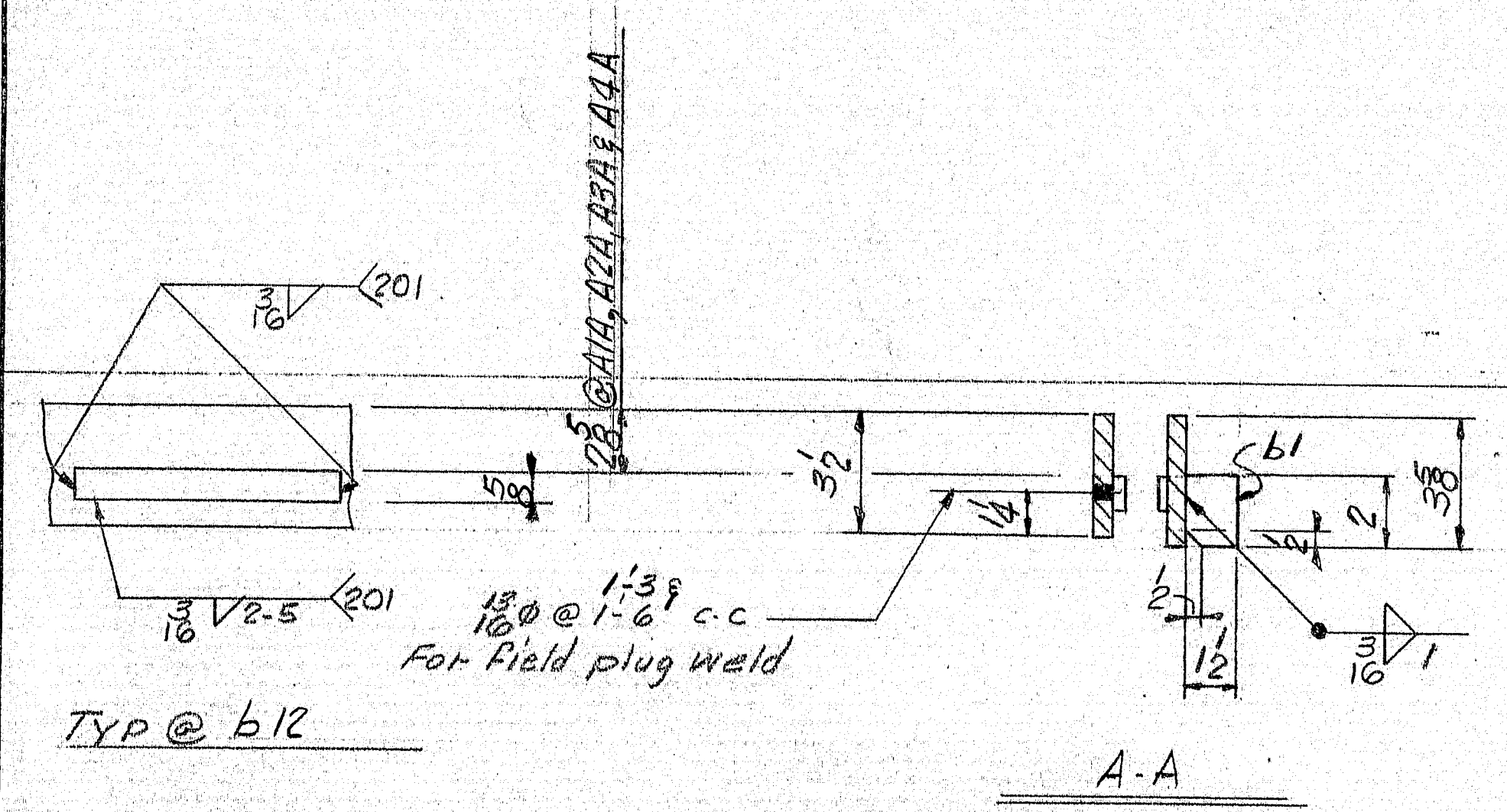
APPROVED: 1-17-79	Bancroft & Martin Inc.		
PRINT DIST.	South Portland, Maine 04106		
2 12-1-78 APP.	JOB REHABILITATION OF FOUR		
3 1-26-79 FAB.	BRIDGE DECKS, HANDEN, ME.		
2 1-26-79 F.B.F.	CUSTOMER: REED & REED		
2 1-26-79 F.A.	DESIGNER: W.E. D.O.T. BRIDGEDIV.		
REV. Δ	ORDER NO.	JOB NO.	DRAWING NO.
CHECKED		8-74	58-3
DRAWN			

ALL CONNECTIONS DETAILED ON THIS DRAWING REPRESENT BANCROFT & MARTIN INC. STANDARDS. IN APPROVING THIS DRAWING FOR FABRICATION, THE ARCHITECT AND PROFESSIONAL ENGINEER ASSUMES THE RESPONSIBILITY FOR THE STRUCTURAL INTEGRITY OF ALL CONNECTIONS SHOWN.

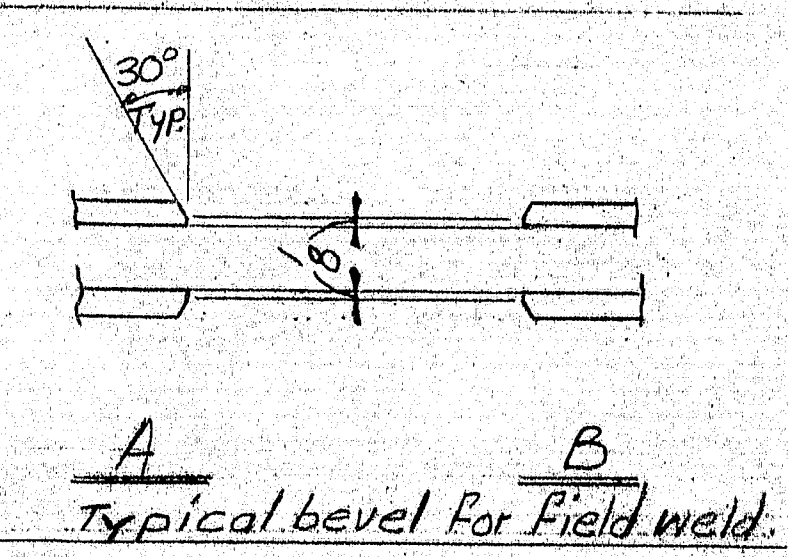
160-76



ONE @ CENTER BRIDGE ABUT. 2

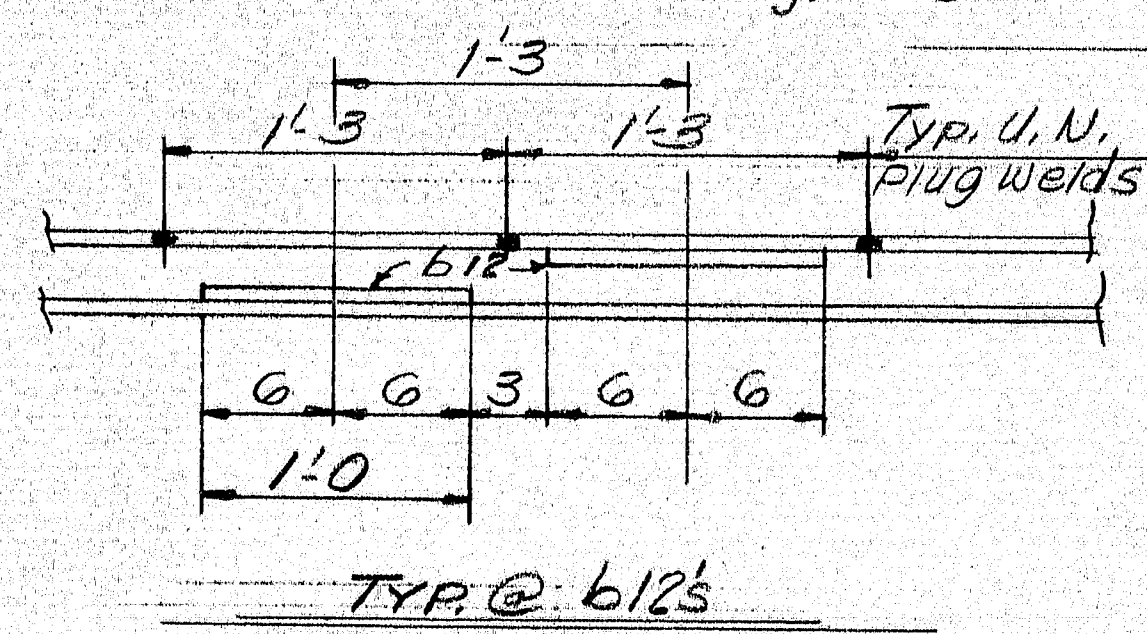


Typ @ b12



Typical bevel for field weld.

NOTE: For locations see dwg. 58-2



TYP @ b12's

B.O.M. & General notes on dwg. 58-1
 TQI-95-7 (79)
 TQI-TQIG 95-7 (80)

ARMORED JOINTS @ CENTER BRIDGE			
APPROVED: 1-17-79	PRINT DIST.		
2	12-1-78	APP.	Pancroft & Martin Inc. South Portland, Maine 04106 JOB: REHABILITATION OF FOUR BRIDGE DECKS, HAMDEN, ME CUSTOMER: REED & REED DESIGNER: M.E. D.O.T. BRIDGE DIV.
3	1-26-79	FAB.	
2	1-26-79	F.B.F.	
2	1-5-78	F.A.	
REV. Δ		ORDER NO.	JOB NO.
CHECKED			
DRAWN	BSM	8-74	58-4

160-77