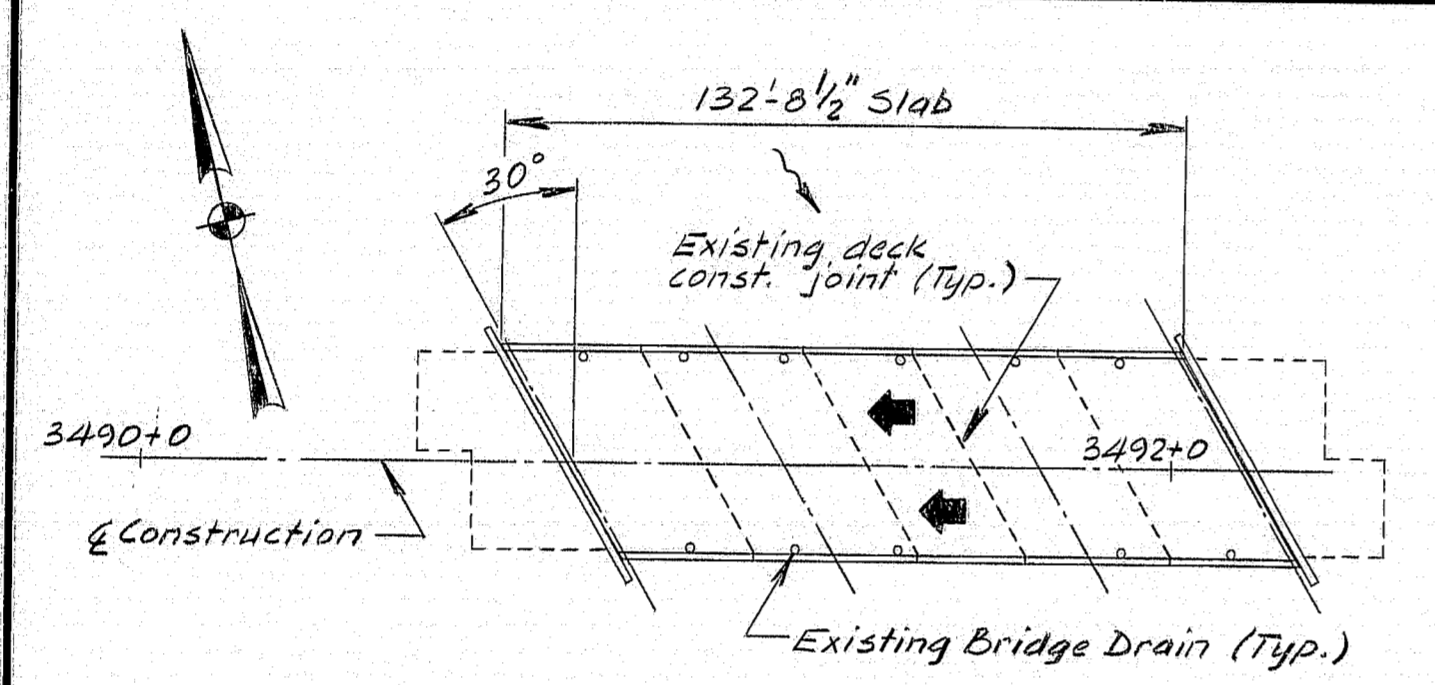
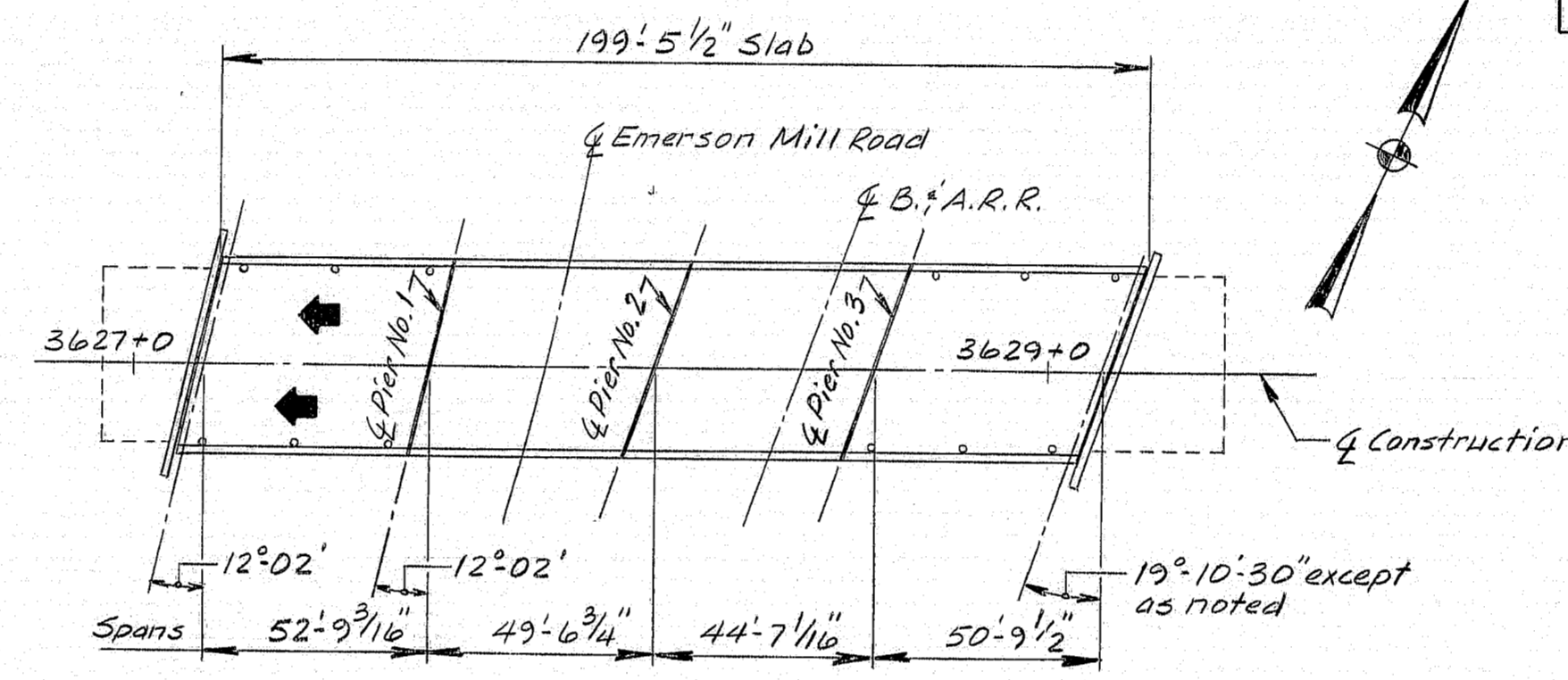


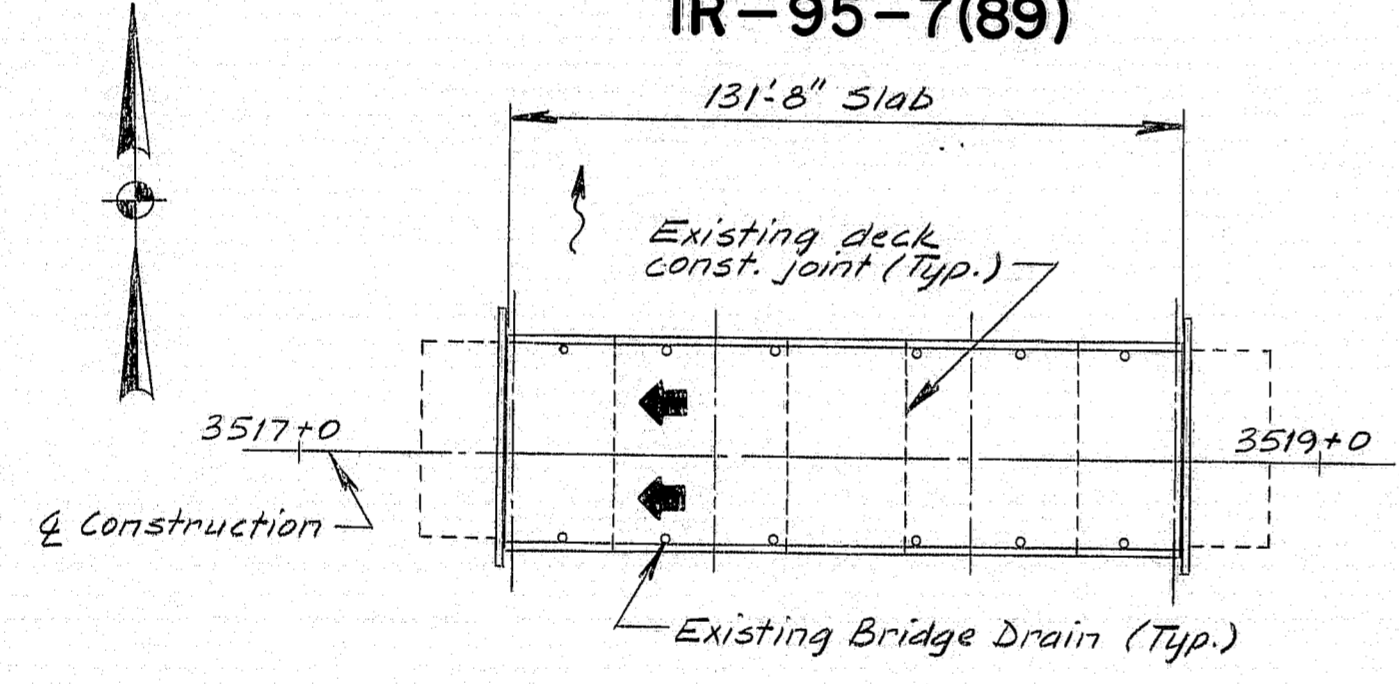
IR-95-7(89)	Soudabscooks	F.R.A.	STATE	PROJECT NUMBER	SHEET	TOTAL
IR-IRG-95-7(93)	E.M.R. & B.A.R.R.		MAINE	95-7(89)	13	26



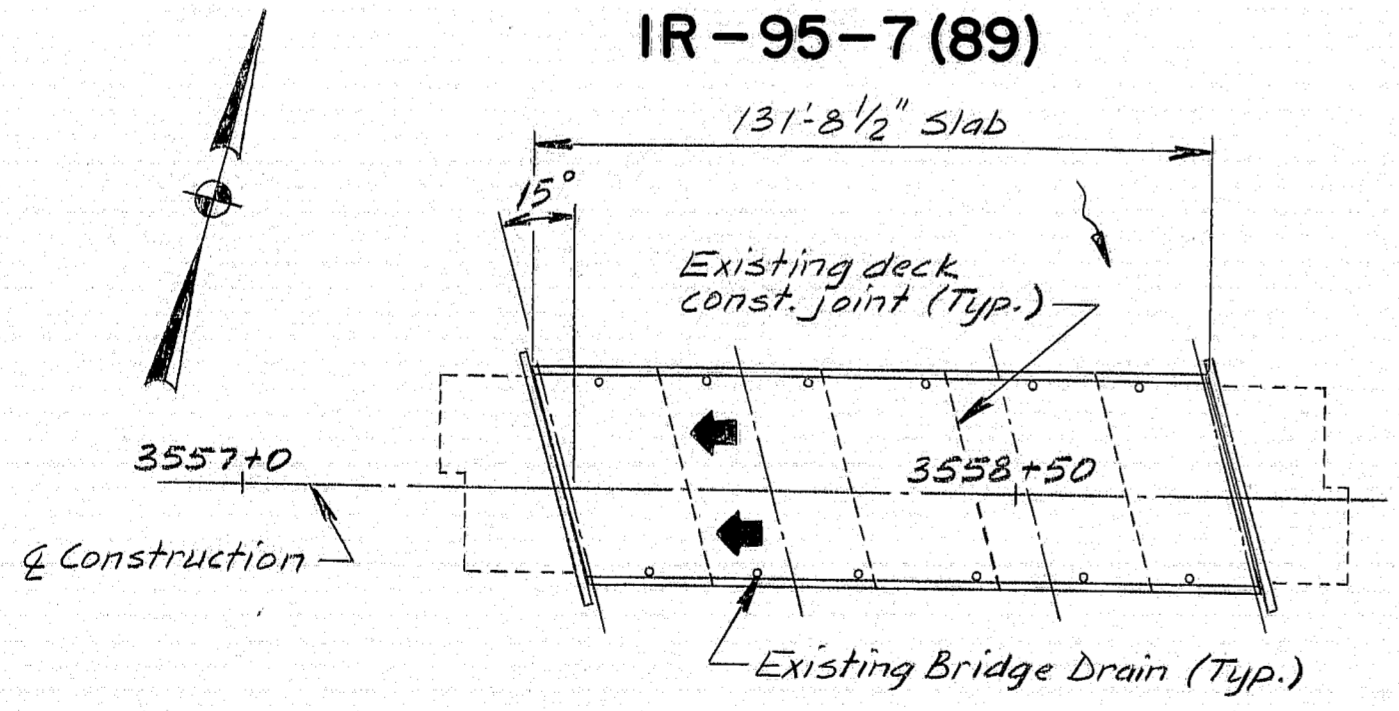
1-95 S.B. OVER SOUDABSCOOK STREAM WEST  
Paving Area = 590 S.Y.



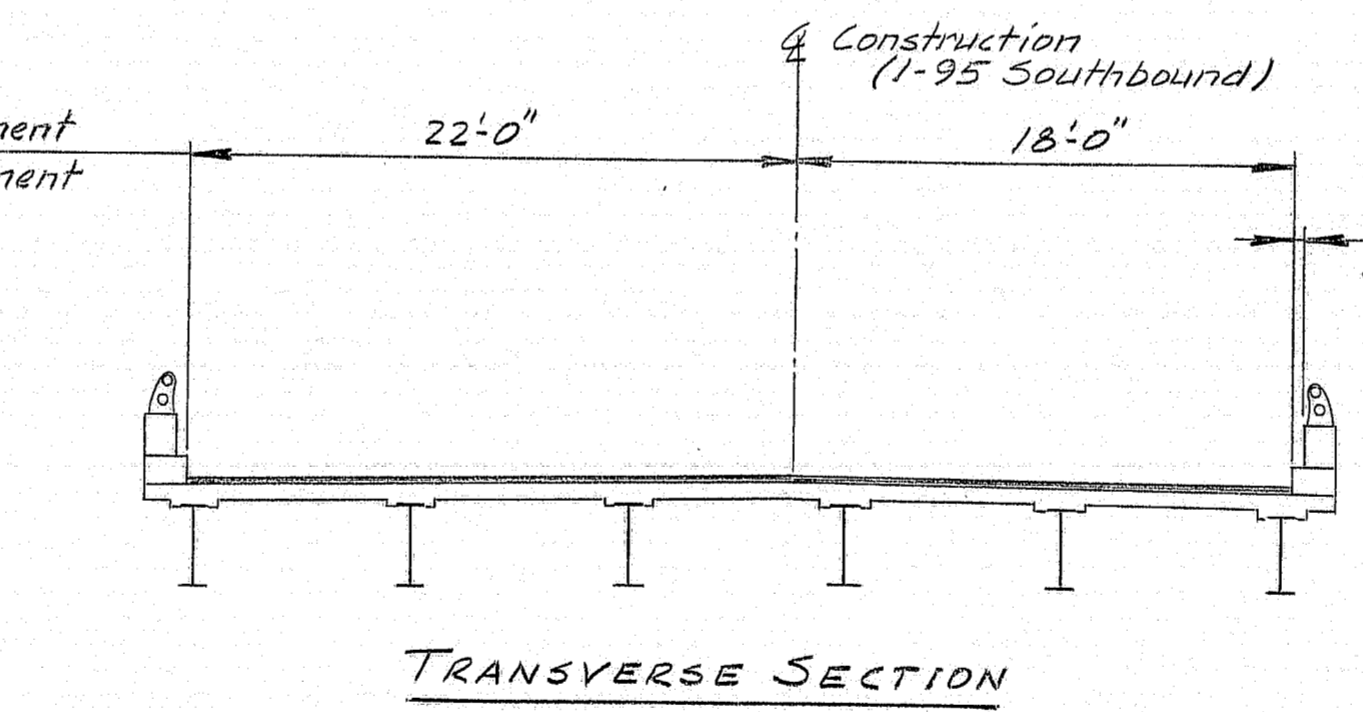
1-95 S.B. OVER EMERSON MILL ROAD & B.A.R.R.  
Paving Area = 890 S.Y.



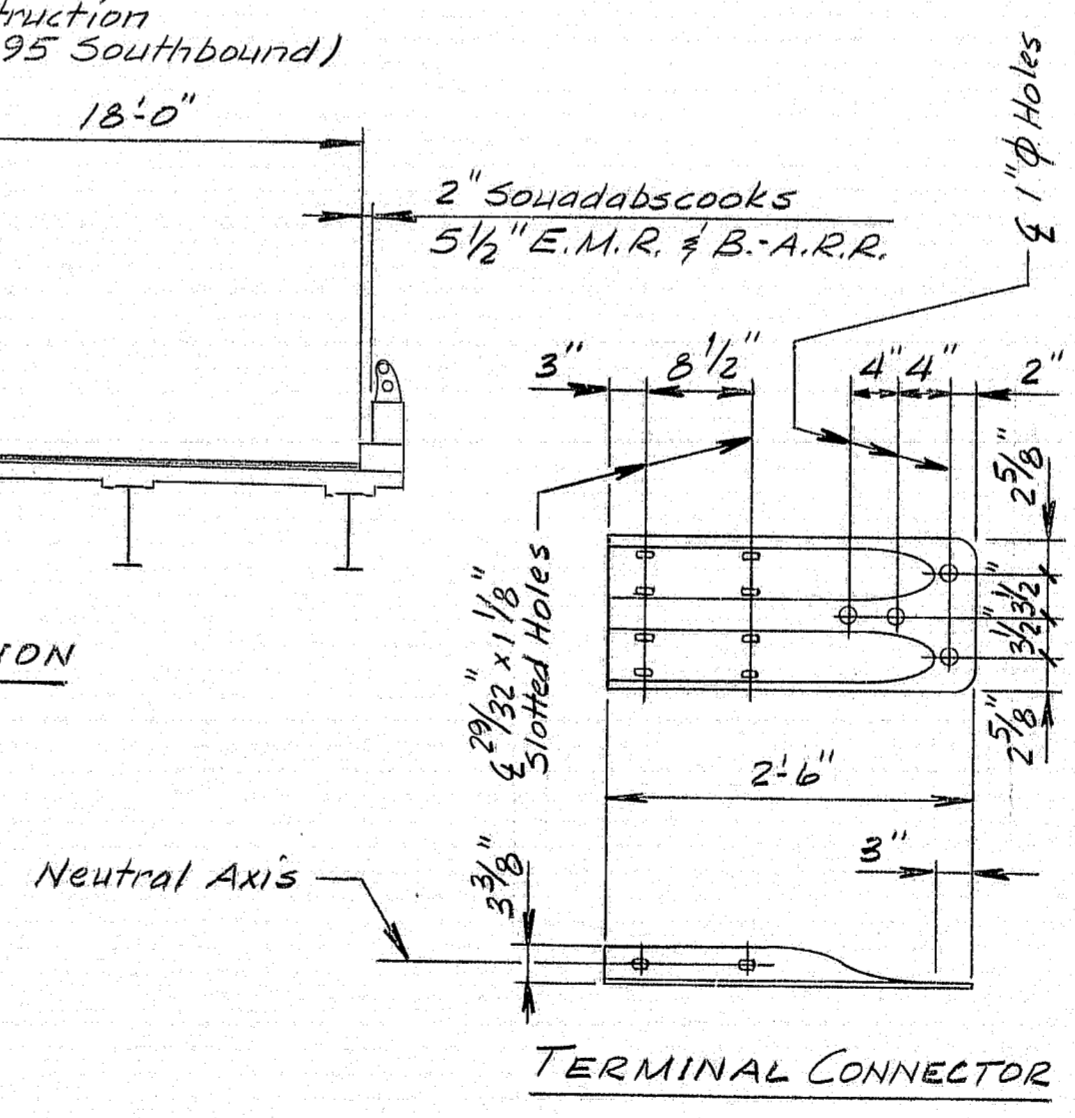
1-95 S.B. OVER SOUDABSCOOK STREAM CENTER  
Paving Area = 585 S.Y.



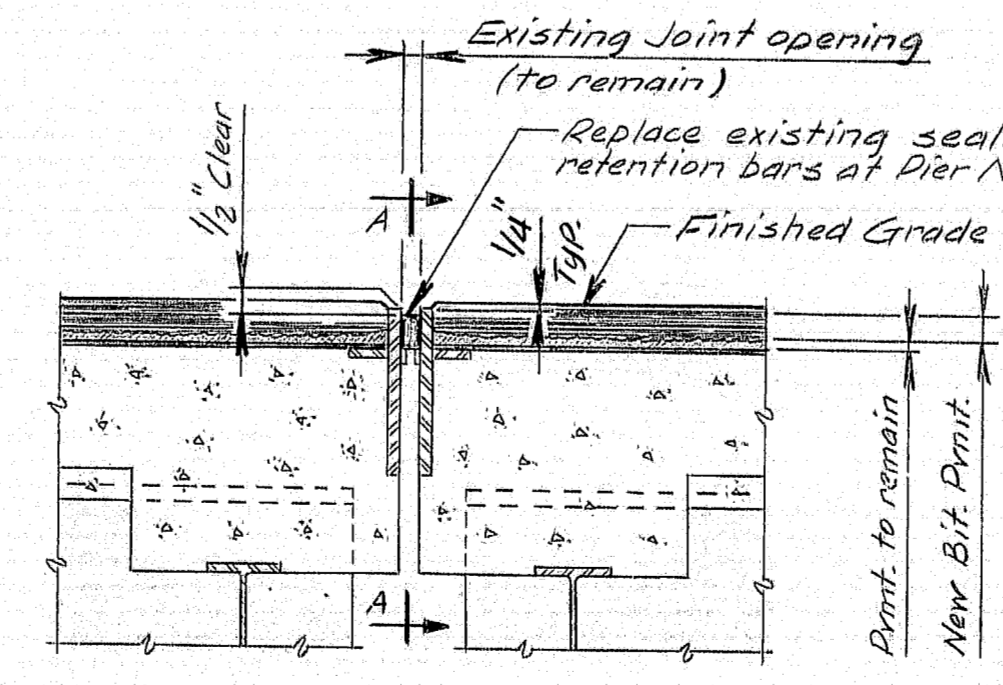
1-95 S.B. OVER SOUDABSCOOK STREAM EAST  
Paving Area = 585 S.Y.



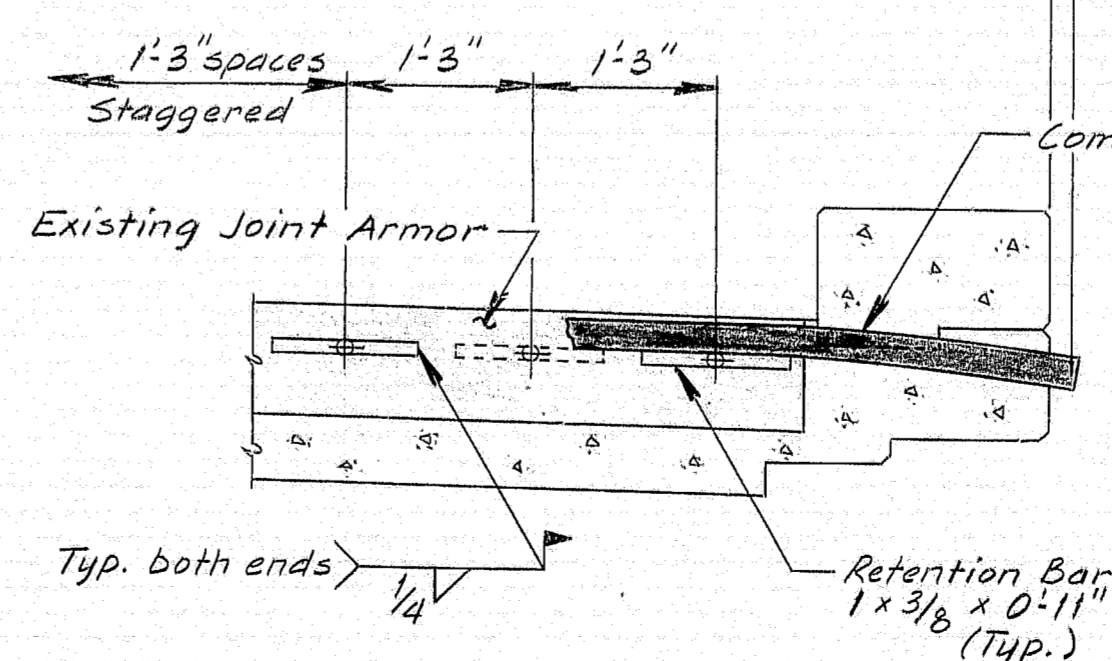
TRANSVERSE SECTION



TERMINAL CONNECTOR



EXPANSION DEVICE DETAIL  
(Emerson Mill Rd. & B.A.R.R. Bridge only)



VIEW A-A

**SPECIFICATIONS**  
DESIGN: AASHTO Standard Specifications for Highway Bridges 1983 and interim specifications 1984.

CONTRACT: State of Maine, Department of Transportation, Standard Specifications, Highways and Bridges, Revision of January 1984.

**DESIGN LOADING**  
LIVE LOAD (Existing) ----- HS20

**TRAFFIC DATA** (Southbound only)  
AADT 1986 ----- 5240  
AADT 2006 ----- 7440  
DAV ----- 1064  
Percent Trucks ----- 15  
Directional Distribution ----- 100  
18 Kip Equivalent D.2.5 ----- 695

**NOTES**  
1. Attach Terminal Connectors to leading ends of each bridge as directed - Payment by EWD#3

- Attach Terminal Connectors to the trailing (westerly) ends of each bridge by drilling 4 - 1" holes thru the existing end posts and installing 4 - 1/2" x 1-2" H.S. Bolts. The exact location will be determined in the field by the Engineer. Any damage caused during this work shall be repaired. Upon the threads on the anchor bolts after the guard rail is installed. Payment will be considered incidental to the guard rail items.
- Depress the bituminous pavement around the bridge drains as directed by the Engineer.
- The existing structural steel at Emerson Mill Road and B.A.R.R. Bridge shall be cleaned and painted at and within three feet of all abutment and pier bearing areas as directed by the Engineer.
- Clean and apply tack coat to ground bituminous surfaces.
- On expansion joints to be resealed, the existing retention bars shall be removed and the welds on the joint armor smoothed to allow proper installation of the new compression seal.
- Maintain min. 14-foot traffic lane at all times.

PROJECT DESIGN ENGINEER	DATE
DESIGN - RETAILED	2-25-95
CHECKED	2-25-95
PLANS	
FIELD CHANGES	

COMPRESSION SEAL OPTIONS		
	Emerson Mill Rd. Pier No. 1	Emerson Mill Rd. Pier No. 3
Watson-Bowman	WA-250-200	WA-200
D.S. Brown	H-2000	H-1750

**97-395**  
"Revised as Built" 1986  
Emm. P. (Kub) 6-17-87  
West Center East Em. Mill  
Bridge No.'s 1433, 1432, 1431, 1430

STATE OF MAINE  
DEPARTMENT OF TRANSPORTATION  
INTERSTATE 95 SOUTHBOUND  
OVER  
SOUDABSCOOK STREAM  
AND  
EMERSON MILL RD. AND B.A.R.R.  
IN THE TOWN OF  
HAMDDEN  
GENERAL PLAN  
SHEET 1 OF 1 AUGUSTA, MAINE