

BORING NOTES

- All samples and vane tests are made ahead of casing
- Ground water table
- Number of blows required to drive extra heavy casing one foot with 400 ft. lbs. of energy per blow
- Location of sample or sample attempt
- Number and type of dry sample
- S&B Sampler #1290's
- 2" O.D. 16 ga. seamless tubing
- 3/4" O.D. 16 ga. seamless tubing
- Wash sample and number
- Unsuccessful sample attempt and type of sampler
- Number of blows required to drive spoon or tubing one foot with 350 ft. lbs. of energy per blow
- Sampling spoon or seamless tubing driven by static weight of drill rods and hammer
- Piston sampler
- Field vane test
- Bottom of boring (may not be bottom of soil strata)
- Refusal of drill rods or casing (may not be ledge, locations cored by diamond bit and per cent recovery of rock)

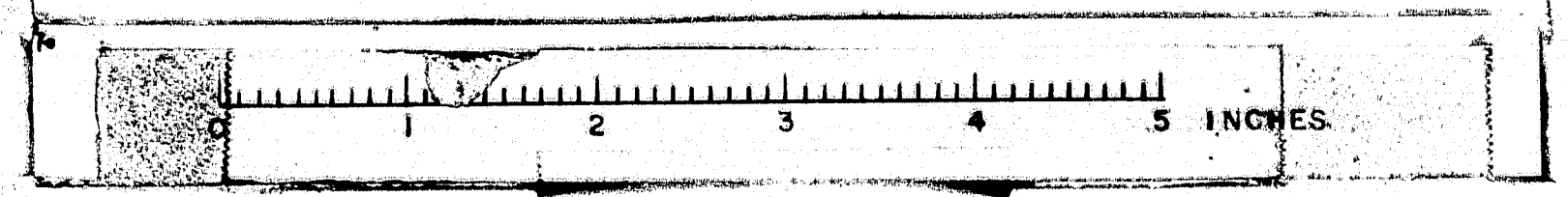
NOTE: TILL BELIEVED TO BE MIXTURE OF SAND & GRAVEL FOR STONES

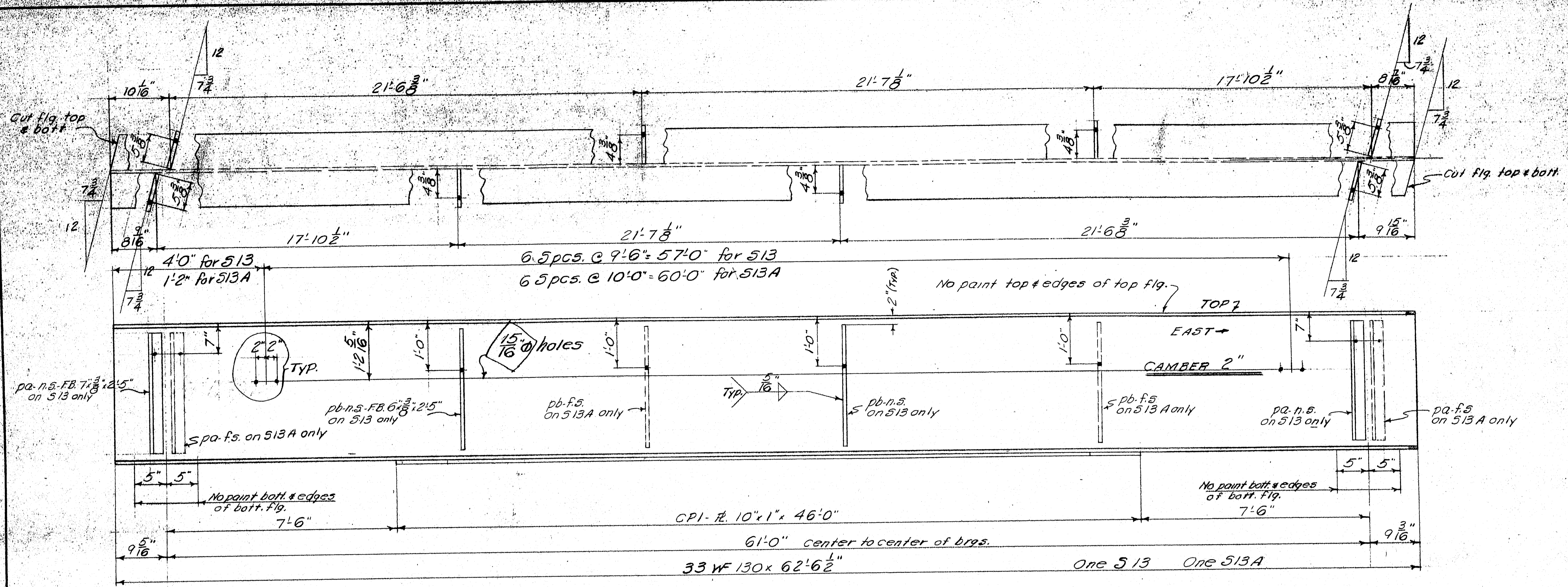
DESIGN TRACK & DETAIL Soils Division BRIDGE NO. SURVEY -

STATE HIGHWAY COMMISSION BRIDGE DIVISION

INTERSTATE 95
OVER
EMERSON MILL ROAD & BANGOR & AROOSTOOK RAILROAD
IN THE TOWN OF
HAMPDEN
PENOBSCOT COUNTY
BORING DETAILS

SHEET 4 OF 25 AUGUSTA, MAINE SEPT., 1961





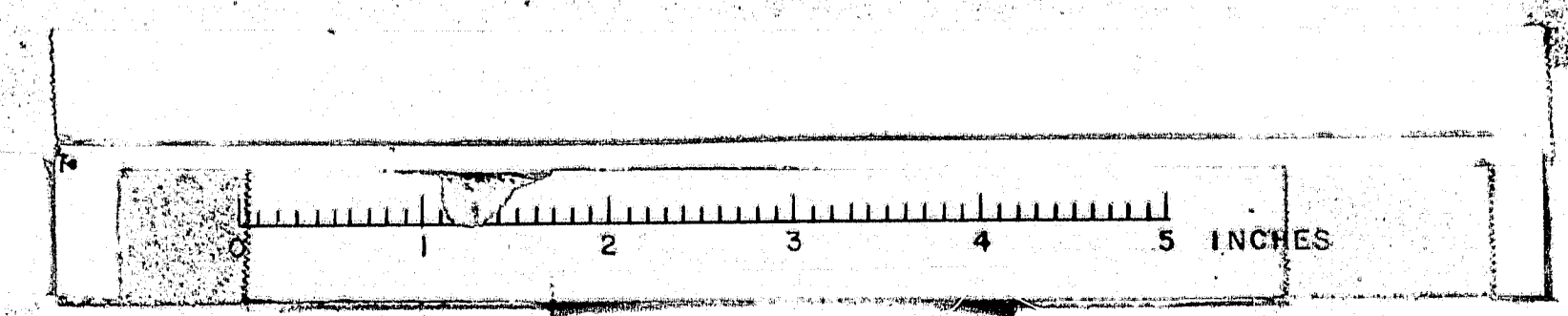
NOTES:
 Shop Conns.: Welded
 Field Conns.: Welded
 Holes: 15/16" ϕ
 Paint: Red Lead per M.S.H.C. Specs. unless noted
 See Dwg. B62-43A S13 for Stud Shear Connector layout, cover plate detail, & Bill of Mat'l.
 Omit paint on web plates 4" up from hole to 1'2" down from hole.

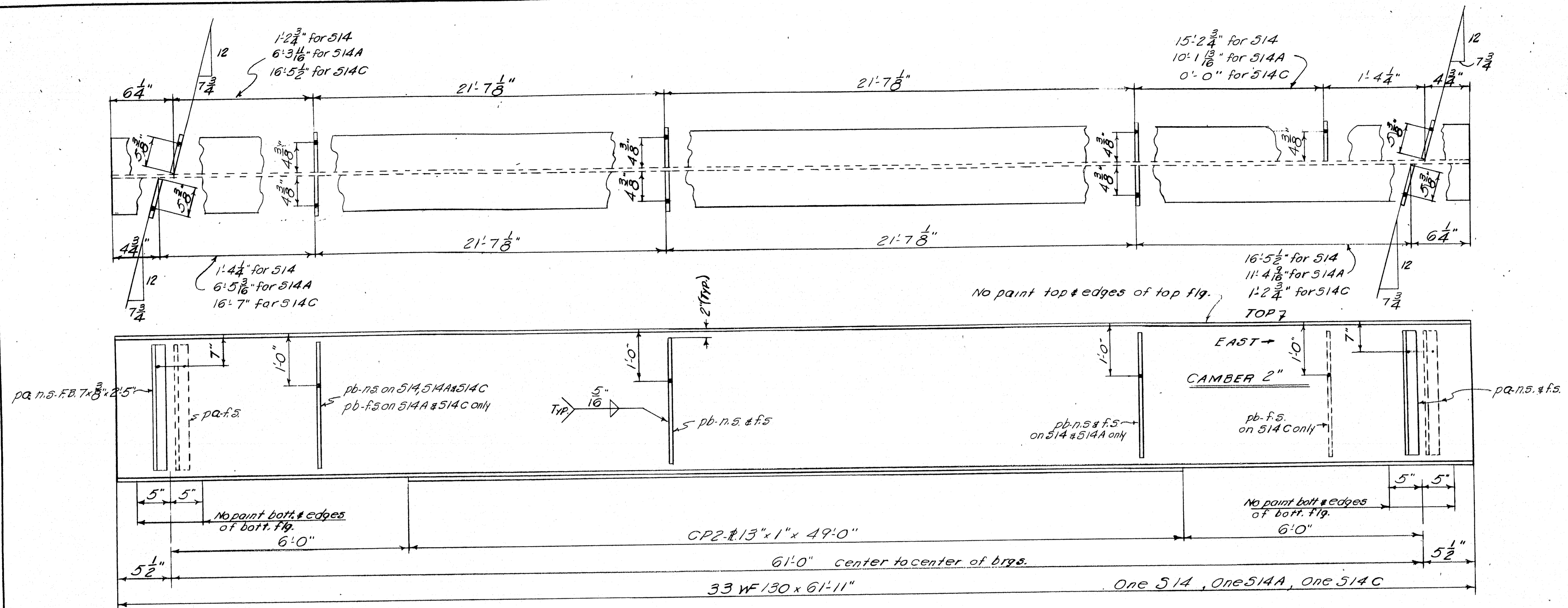
APP. 5-162

STRINGER DETAIL	
Bancroft & Martin Rolling Mills Company South Portland, Maine	
INTERSTATE 95 (NORTHBOUND) OVER EMERSON MILL RD. & B. & A. R. R. HAMPDEN, MAINE	
CUSTOMER: CONSTRUCTORS, INC. DESIGNER: M. S. H. C.	
ORDER NO. _____	DWG. NO. B62-43A S1

DRAWN	B.B. 62 R.L.F.
REVISION	
REVISION	
REVISION	

86-59



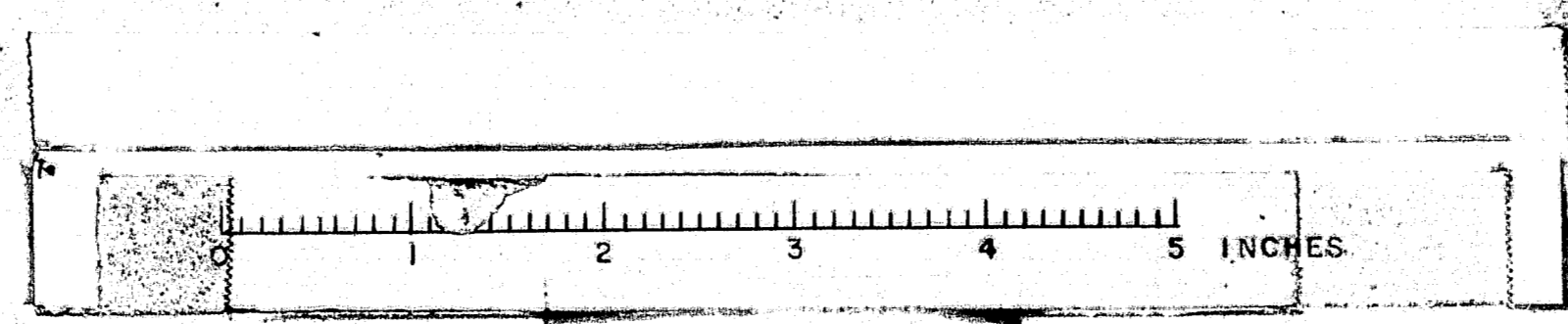


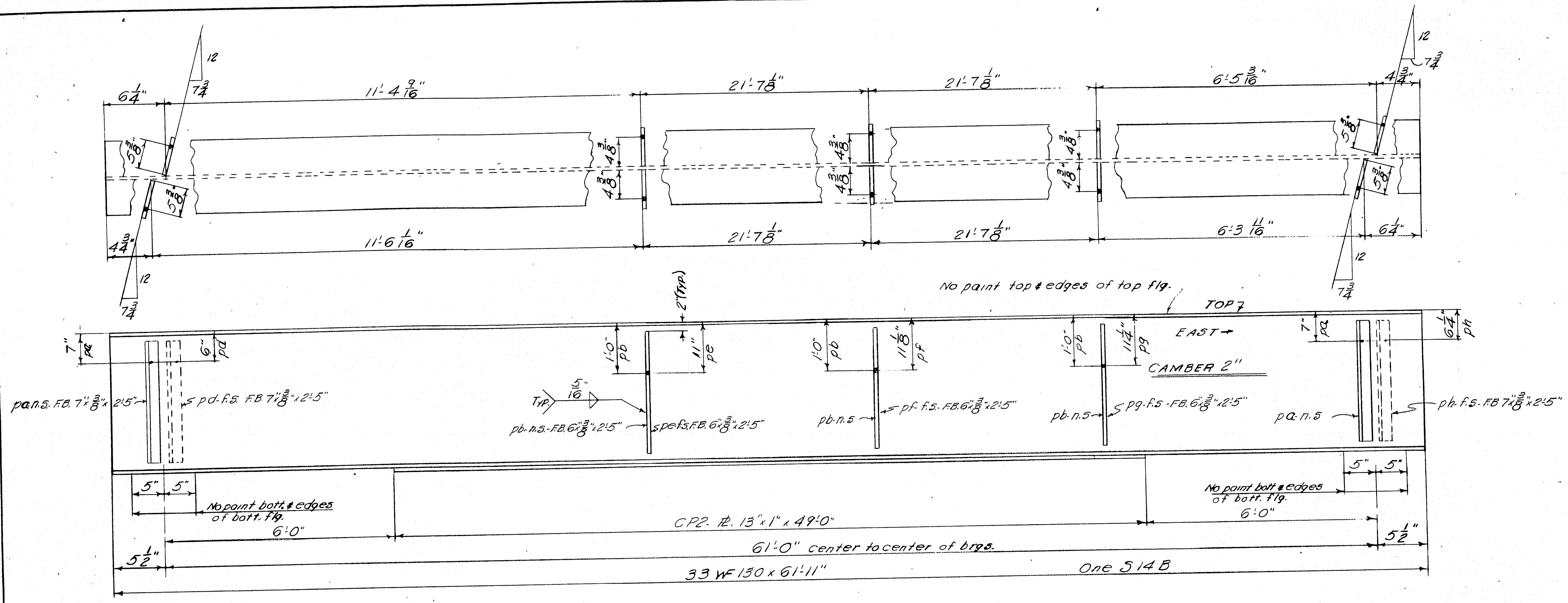
NOTES:
 Shop Conns.: Welded
 Field Conns.: Welded
 Holes: 1/8" φ
 Paint: Red Lead per M.S.H.C. Specs, unless noted
 See Dwg B62-43A51B for Stud Shear Connector layout, cover plate detail, & Bill of Mat'l.
 Omit paint on web plates - 4" up from hole to 1/2" down from hole.

APR 5-1-62

STRINGER DETAIL	
Bancroft & Martin, Helling, Hill & Company South Portland, Maine	
INTERSTATE 95 (NORTHBOUND) OVER EMERSON MILL RD. & B. & A. R. R. HAMPTON, MAINE	
CUSTOMER: CONSTRUCTORS, INC. DESIGNER: M. S. H. C.	
DRAWN: 3-13-62 P.L.F.	ORDER NO. _____
REVISION: _____	DWG. NO. B62-43A52
REVISION: _____	
REVISION: _____	

86-60



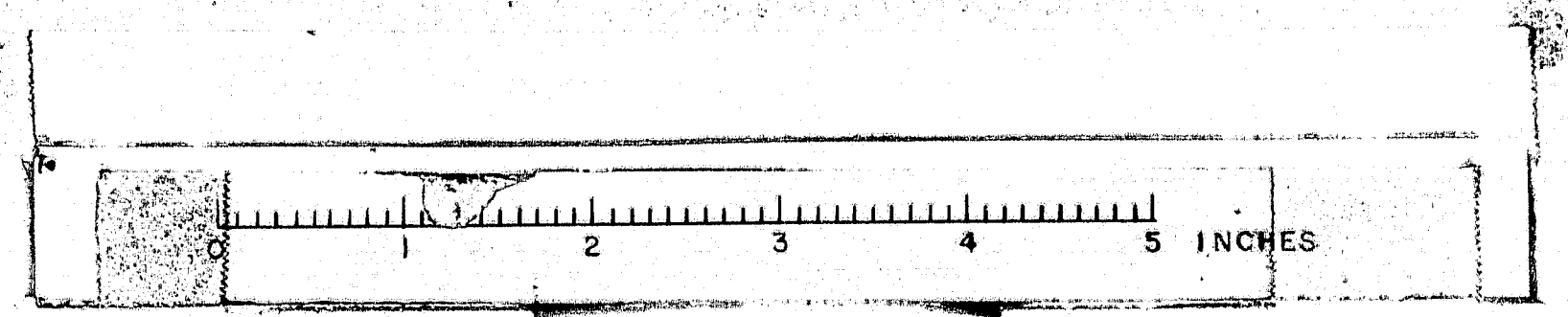


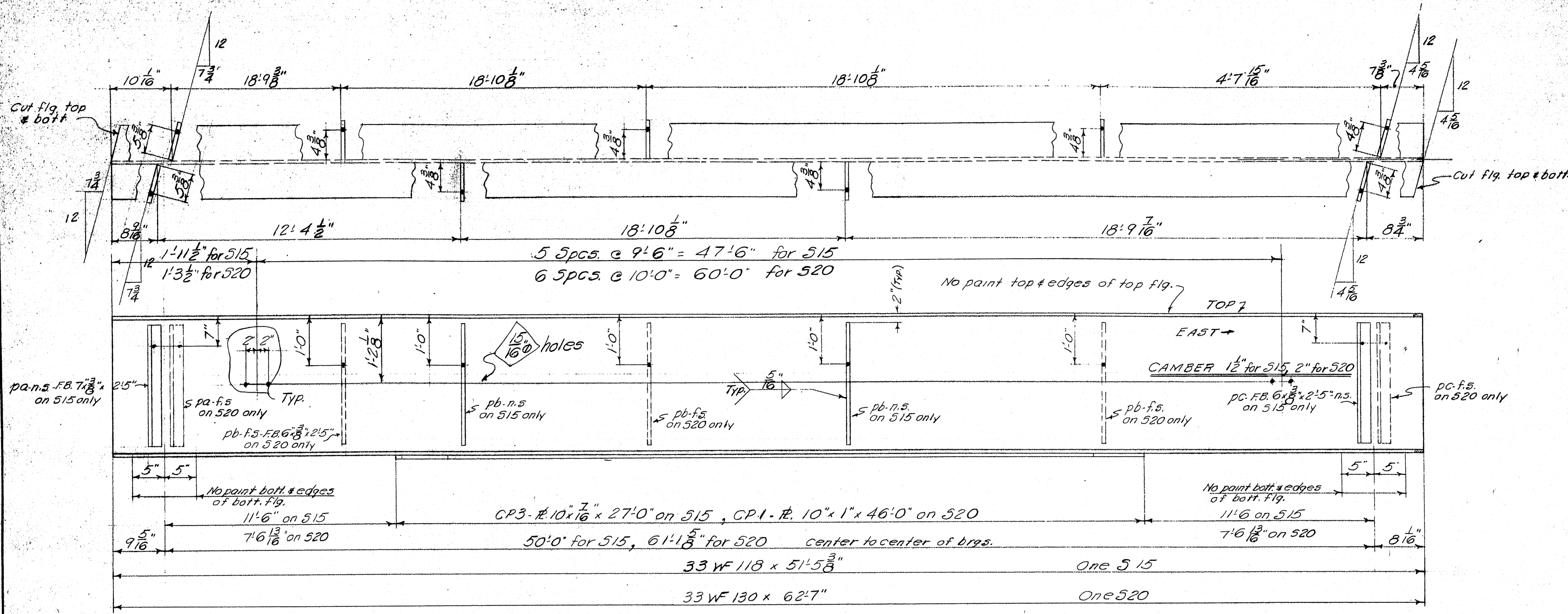
NOTES:
 Shop Conn.: Welded
 Field Conn.: Welded
 Holes: 1³/₁₆" φ
 Paint: Red Lead per M.S.H.C. Specs. unless noted
 See Dwg B62-43A53 for Stud Shear Connector layout, cover plate detail, & Bill of Mat'l.
 Omit paint on web plates - 4" up from hole to 1'-2" down from hole.

STRINGER DETAIL.	
Bancroft & Martin, Rolling Mills Company South Portland, Maine	
INTERSTATE 95 (NORTHBOUND) OVER EMERSON MILL RD. & B. & A. R. R. HAMPDEN, MAINE	
CUSTOMER <u>CONSTRUCTORS, INC.</u> DESIGNER <u>M. S. H. C.</u>	
DRAWN 3-13-62 PLF	ORDER NO. _____
REVISION 5-3-62 PLF	DWG. NO. <u>B62-43A53</u>
REVISION	
REVISION	

APP. 5-1-62

06-61

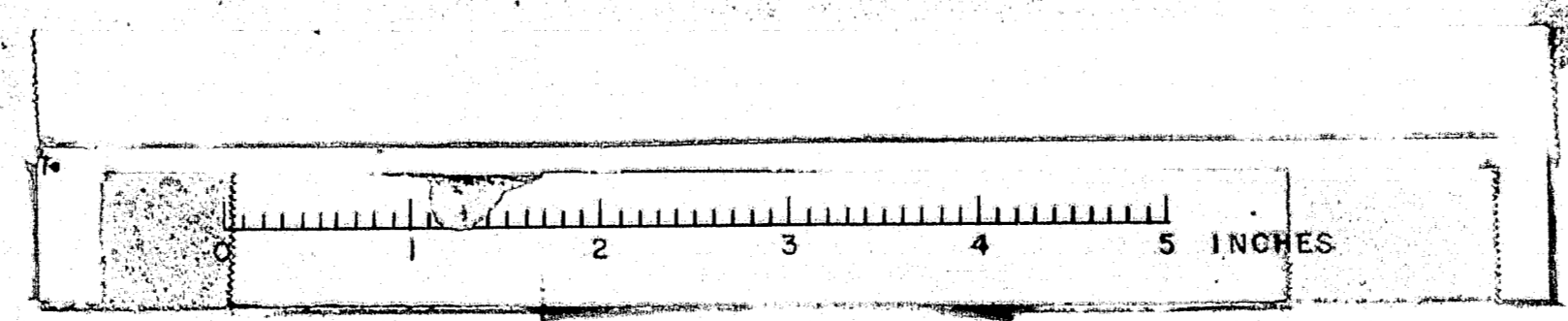




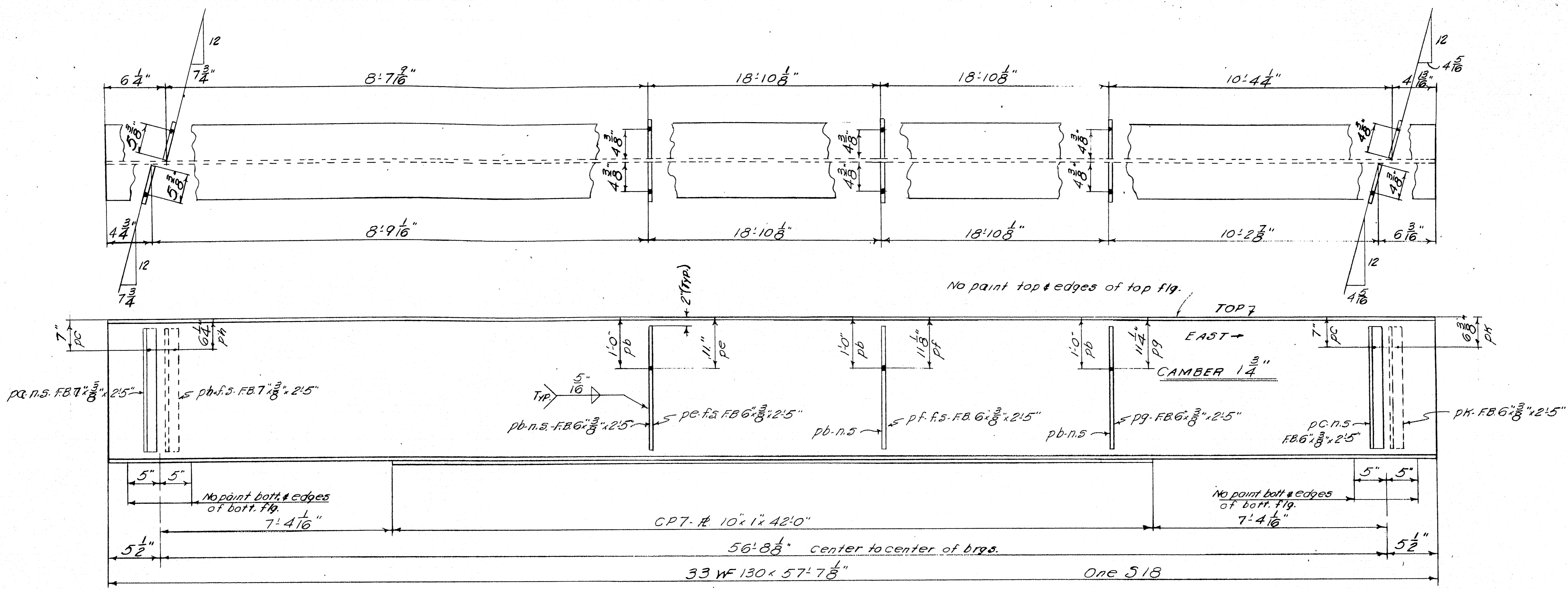
NOTES:
 Shop Conns.: Welded
 Field Conns.: Welded
 Holes: 13/16" Ø
 Paint: Red Lead per M.S.H.C. Specs, unless noted.
 See Dwg B62-43A-513 for Stud Shear Connector layout, cover plate detail, & Bill of Mat'l.
 Omit paint on web plates- 4" up from hole to 1'-2" down from hole.

STRINGER DETAIL	
Bancroft & Martin Rolling Mills Company South Portland, Maine	
INTERSTATE 95 (NORTHBOUND) OVER EMERSON MILL RD. & B. & A. R. R. HAMPDEN, MAINE	
CUSTOMER: CONSTRUCTORS, INC. DESIGNER: M. S. H. C.	
ORDER NO. _____	DWG. NO. B62-43A-54

DRAWN	3-13-62	PLF
REVISION	5-3-62	PLF
REVISION		
REVISION		



86-62

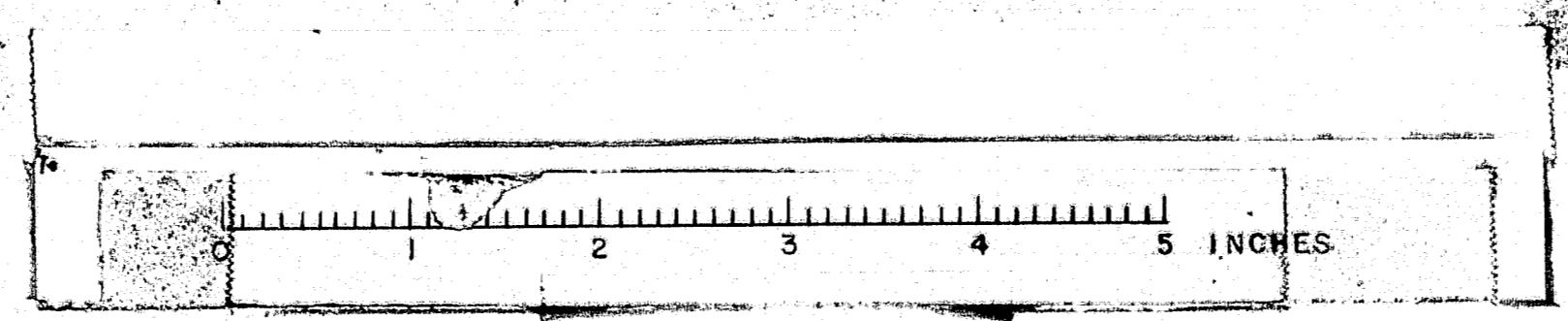


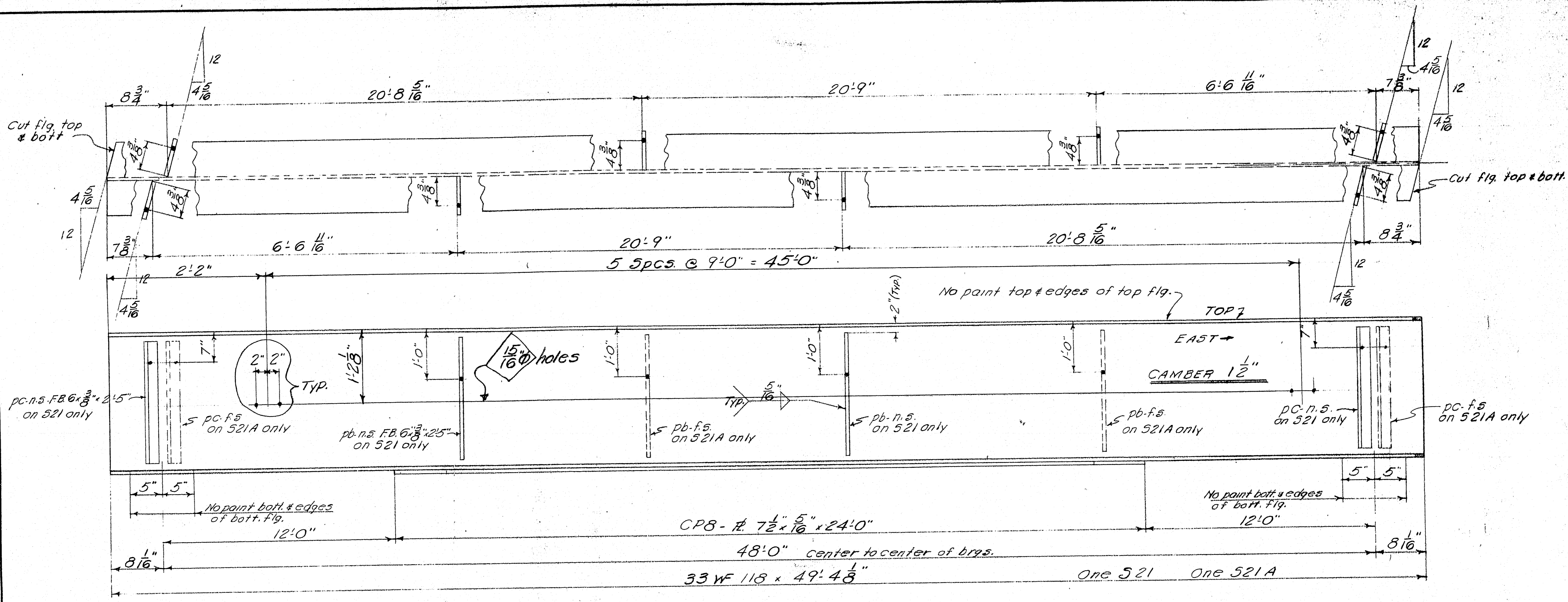
NOTES:
 Shop Conns.: Welded
 Field Conns.: Welded
 Holes: $\frac{15}{16}" \phi$
 Paint: Red Lead per M.S.H.C. Specs. unless noted
 See DWG B62-43A5B for Stud Shear Connector layout, cover plate detail, & Bill of Mat'l.
 Omit paint on web plates - 4" up from hole to 1-2" down from hole.

STRINGER DETAIL	
Bancroft & Martin Rolling Mill Company South Portland, Maine	
INTERSTATE 95 (NORTHBOUND) OVER EMERSON MILL RD. & B. & A. R. R. HAMPDEN, MAINE	
CUSTOMER: CONSTRUCTORS, INC. DESIGNER: M. S. H. C.	
DRAWN: 3-13-62 RLF	ORDER NO. _____
REVISION: 5-3-62 RLF	DWG NO. B62-43A56
REVISION: _____	

APP 5-162

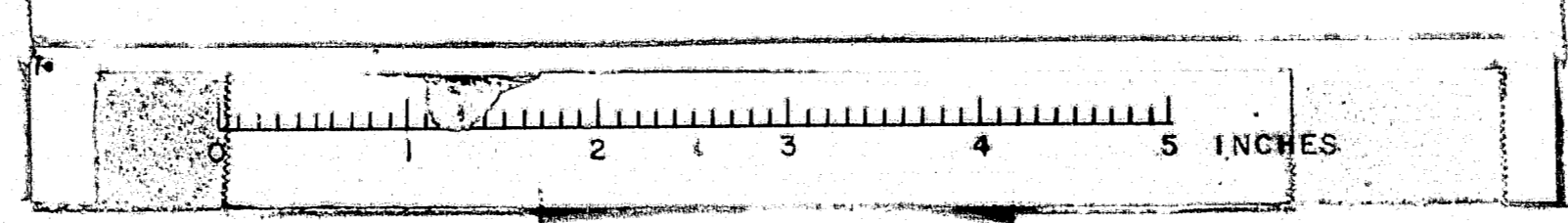
86-64

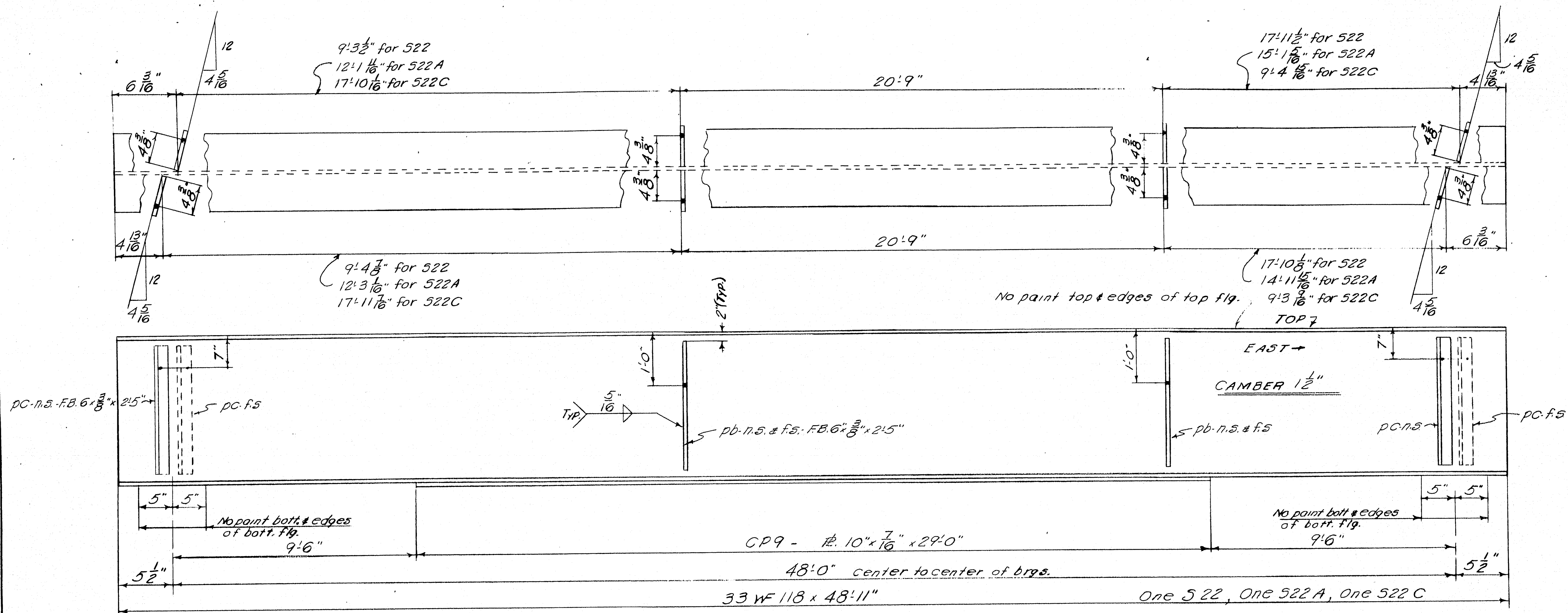




NOTES:
 Shop Conns.: Welded
 Field Conns.: Welded
 Holes: $\frac{13}{16}$ " ϕ
 Paint: Red Lead per M.S.H.C. Specs. unless noted
 See Dwg. B62-43A513 for Stud Shear Connector layout, cover plate detail, & Bill of Mat'l.
 Omit paint on web plates: 4" up from hole to 1/2" down from hole.

STRINGER DETAIL	
Bancroft & Martin Rolling Mills Company South Portland 1, Maine	
INTERSTATE 95 (NORTHBOUND) OVER EMERSON MILL RD. & B. & A. R. R. HAMPTON, MAINE	
CUSTOMER CONSTRUCTORS, INC. DESIGNER M. S. H. C.	
DRAWN 3-13-62 R.L.F.	ORDER NO. _____
REVISION _____	DWG. NO. B62-43A57
REVISION _____	
REVISION _____	





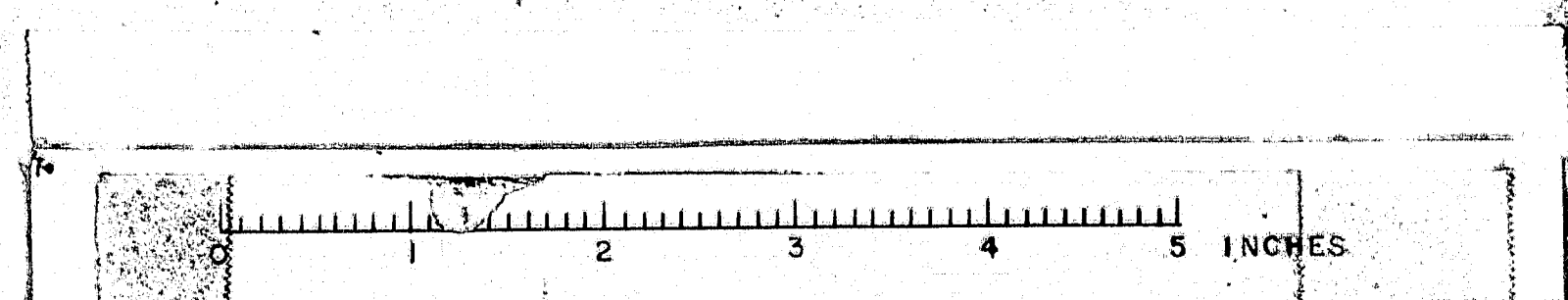
NOTES:
 Shop Conns.: Welded
 Field Conns.: Welded
 Holes: 1/8" φ
 Paint: Red Lead per M.S.H.C. Specs, unless noted
 See Dwg B62-43A-53 for Stud Shear Connector layout, cover plate detail, & Bill of Mat'l.
 Omit paint on web plates 4' up from hole to 1'-2" down from hole.

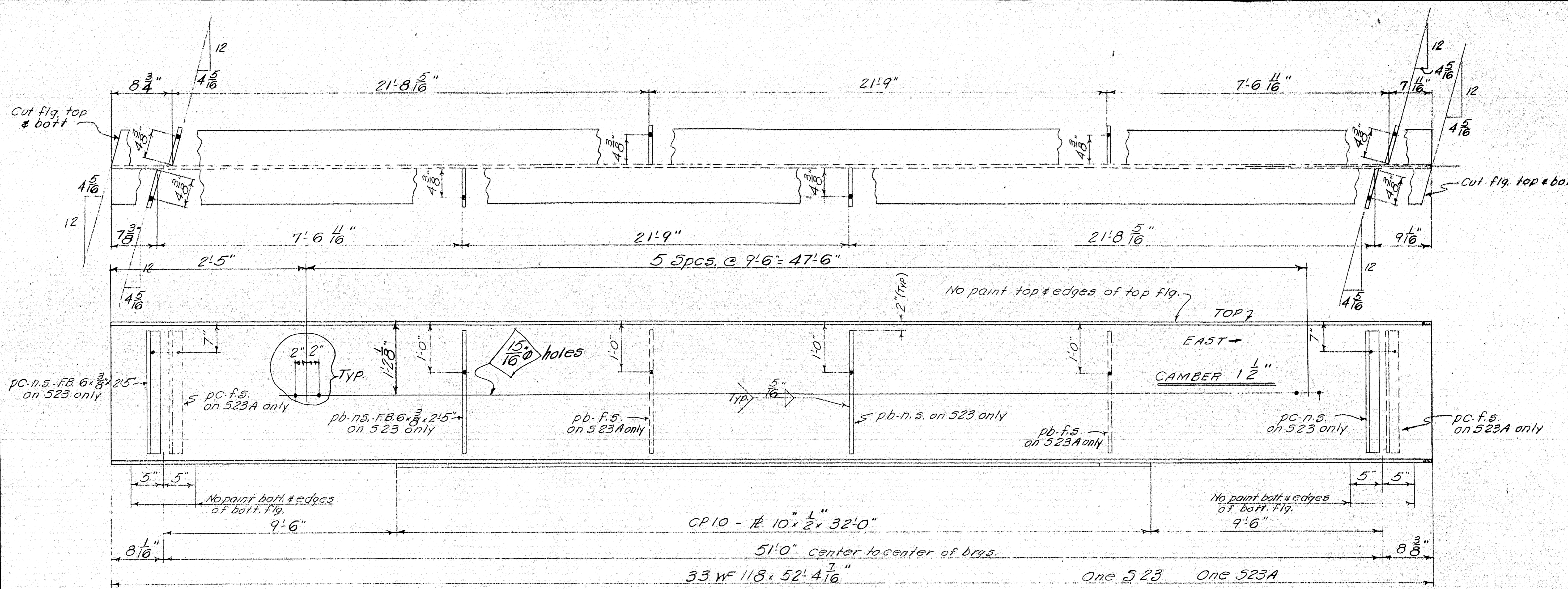
STRINGER DETAIL	
Bancroft & Masten-Petting Mill Company South Portland, Maine	
INTERSTATE 95 (NORTHBOUND) OVER EMERSON MILL RD. & B. & A. R. R. HAMPDEN, MAINE	
CUSTOMER <u>CONSTRUCTORS, INC.</u> DESIGNER <u>M. S. H. C.</u>	
ORDER NO _____	DWG NO <u>B62-43A-58</u>

DRAWN	3-13-62	PLF
REVISION		
REVISION		
REVISION		

APP 51-62

86-65





NOTES:
 Shop Conns.: Welded
 Field Conns.: Welded
 Holes: $\frac{13}{16}$ " ϕ
 Paint: Red Lead per M.S.H.C. Specs, unless noted
 See Dwg. B62-43A513 for Stud Shear Connector layout, Cover plate detail, & Bill of Mat'l.
 Omit paint on web plates 4" up from hole to 1-2" down from hole.

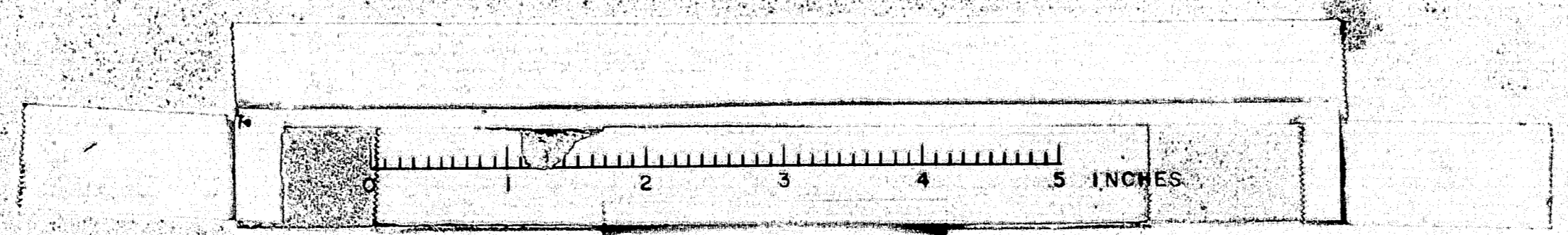
APP. 5-1-62

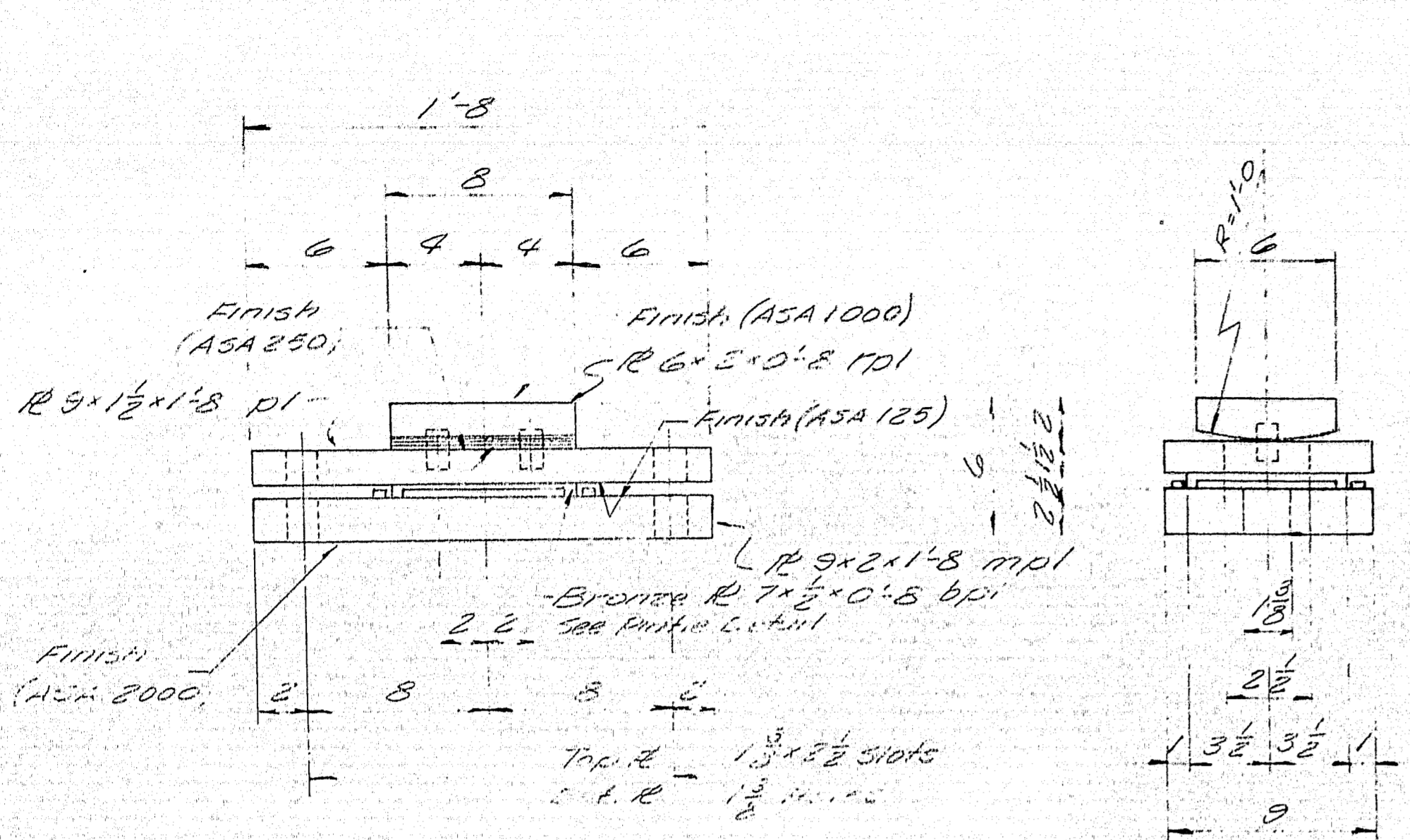
STRINGER DETAIL	
Bancroft & Martin Rolling Mills Company South Portland, Maine	
INTERSTATE 95 (NORTHBOUND) OVER EMERSON MILL RD. & E. & A. R. R. HAMPDEN, MAINE	
CUSTOMER: CONSTRUCTORS, INC. DESIGNER: M. S. H. C.	
ORDER NO. _____	DWG. NO. B62-43A510

DRAWN	J.B.G. R.L.F.
REVISION	
REVISION	
REVISION	

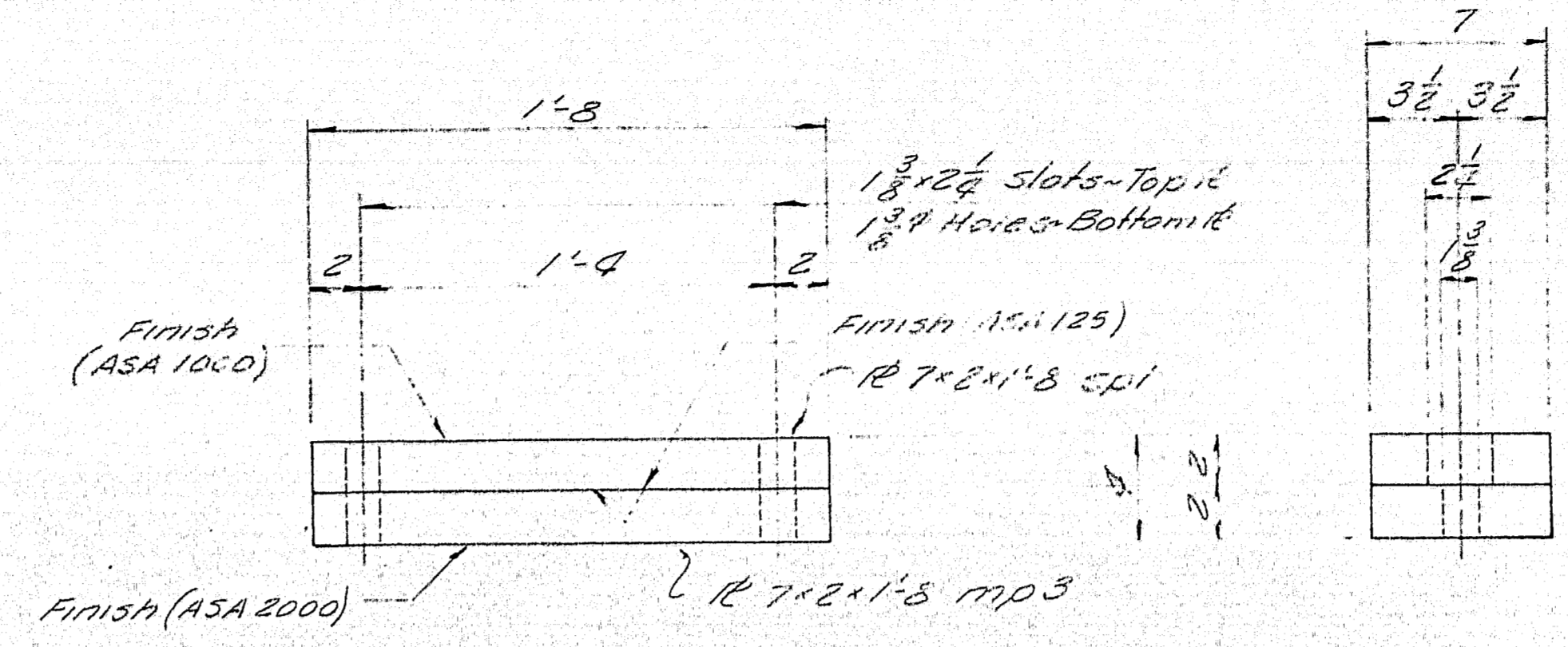
ORDER NO. _____ DWG. NO. B62-43A510

86-67

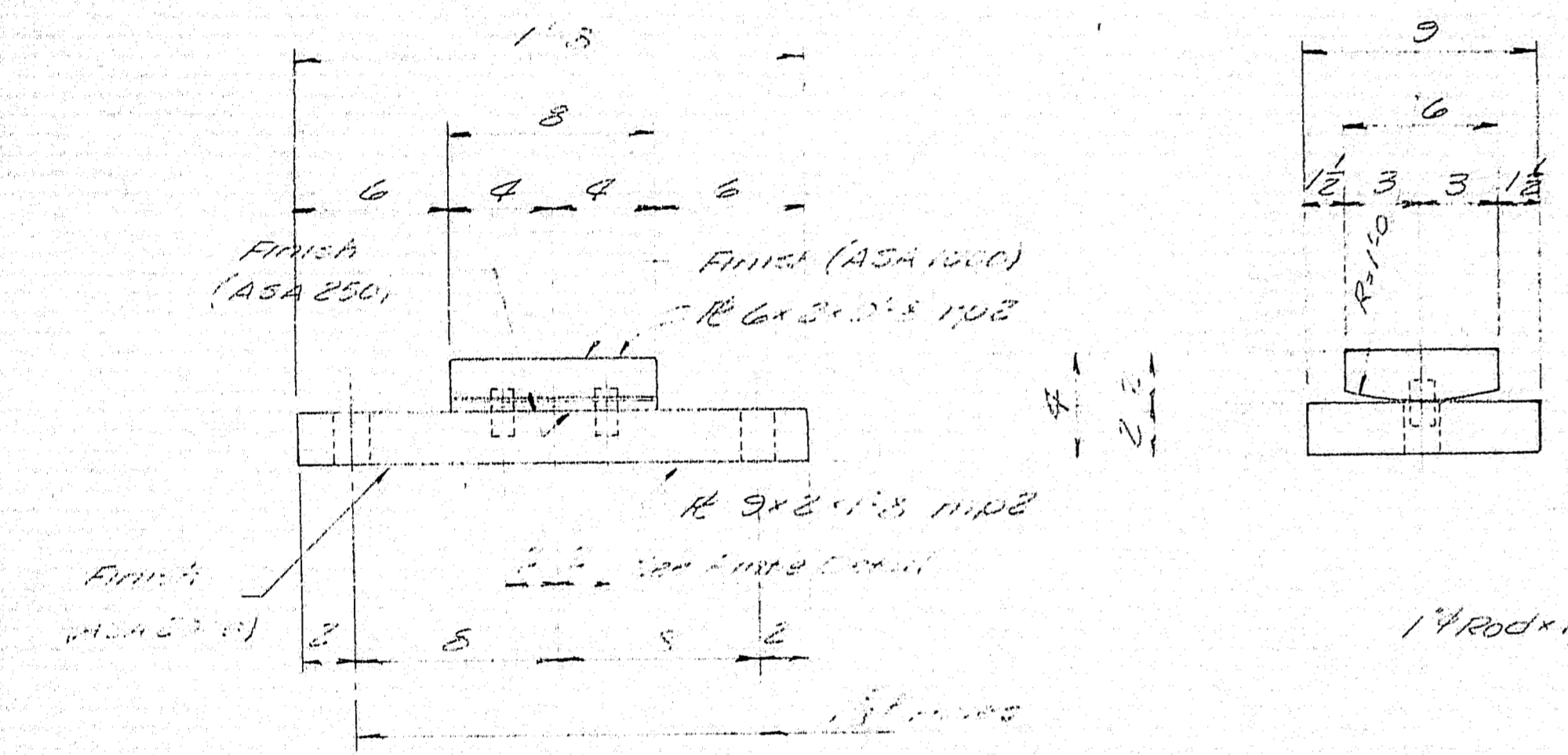




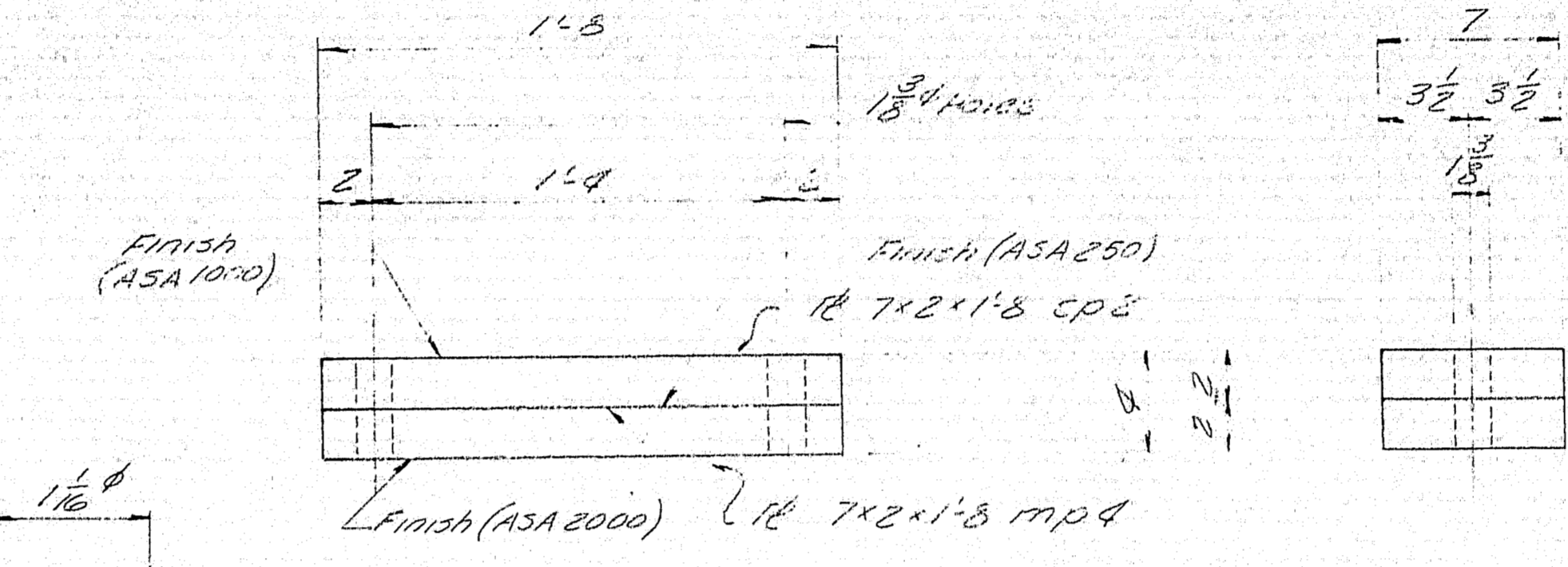
EXPANSION BEARING
EB1 18 Req'd



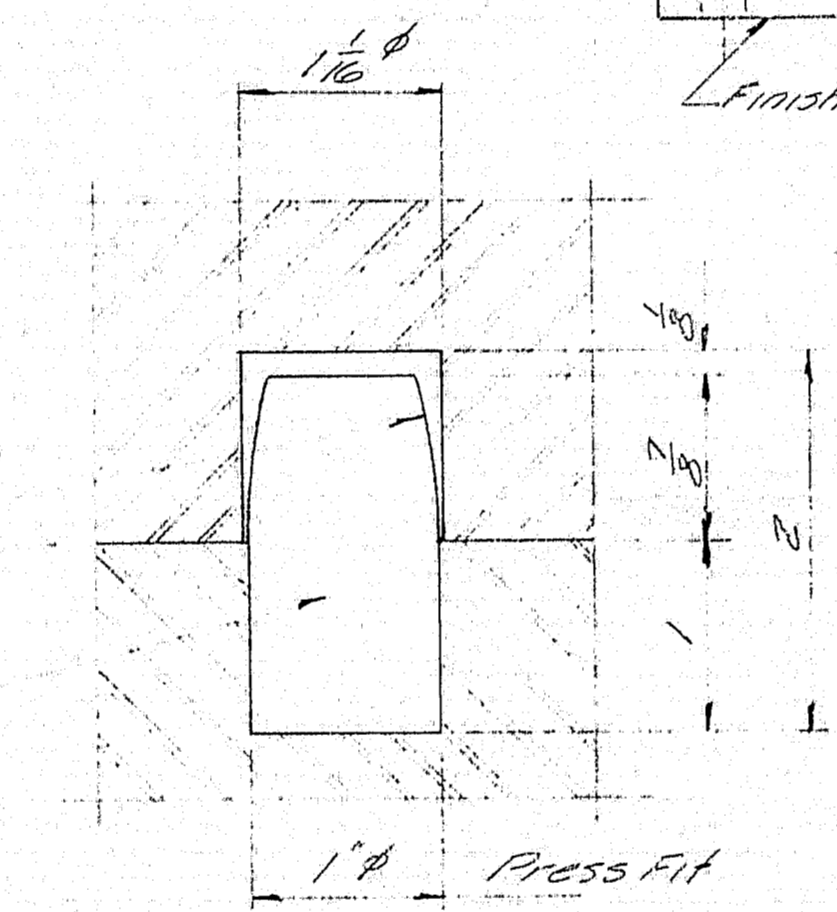
EXPANSION BEARING
EB2 6 Req'd



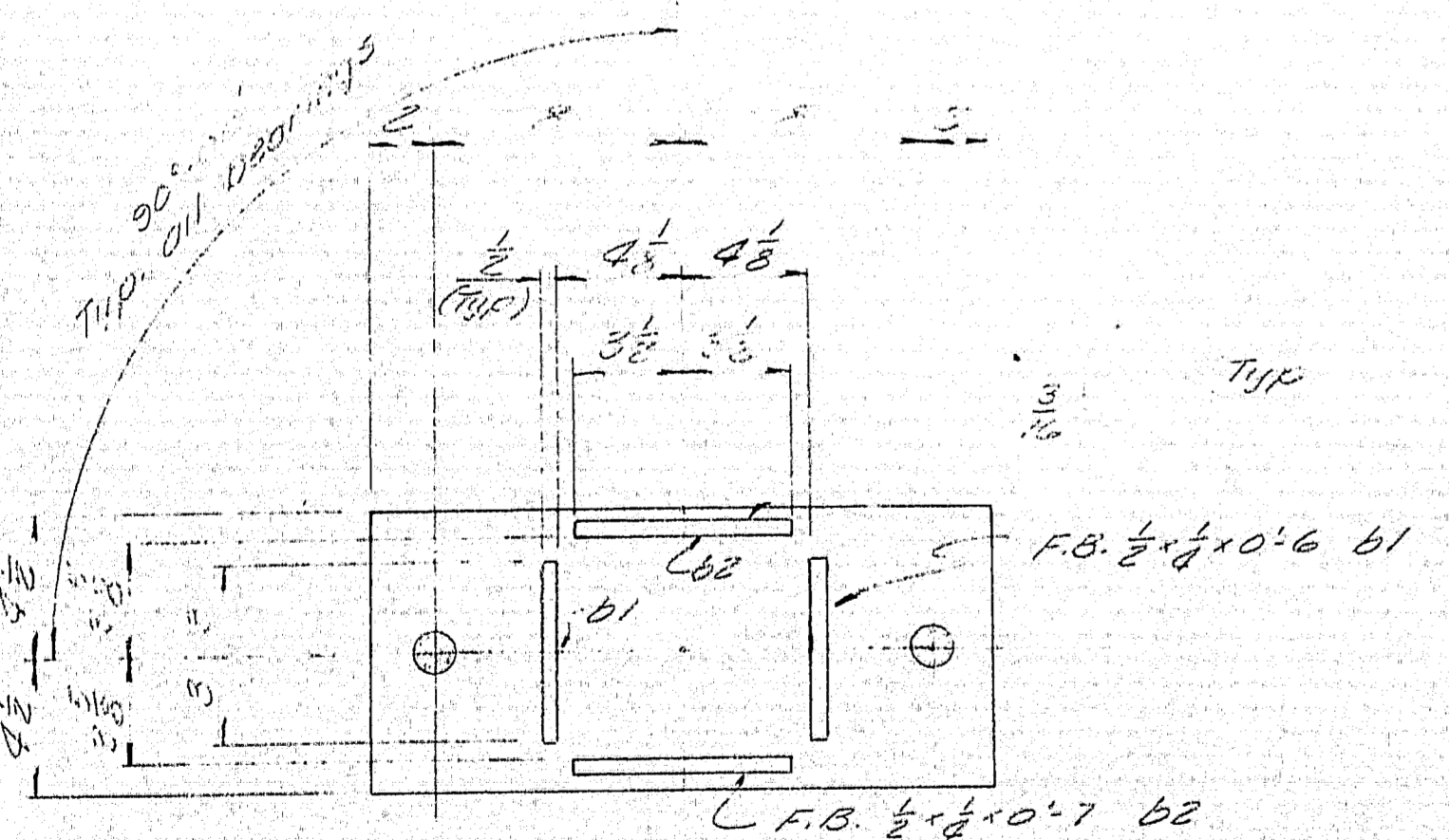
FIXED BEARINGS
FB1 18 Req'd



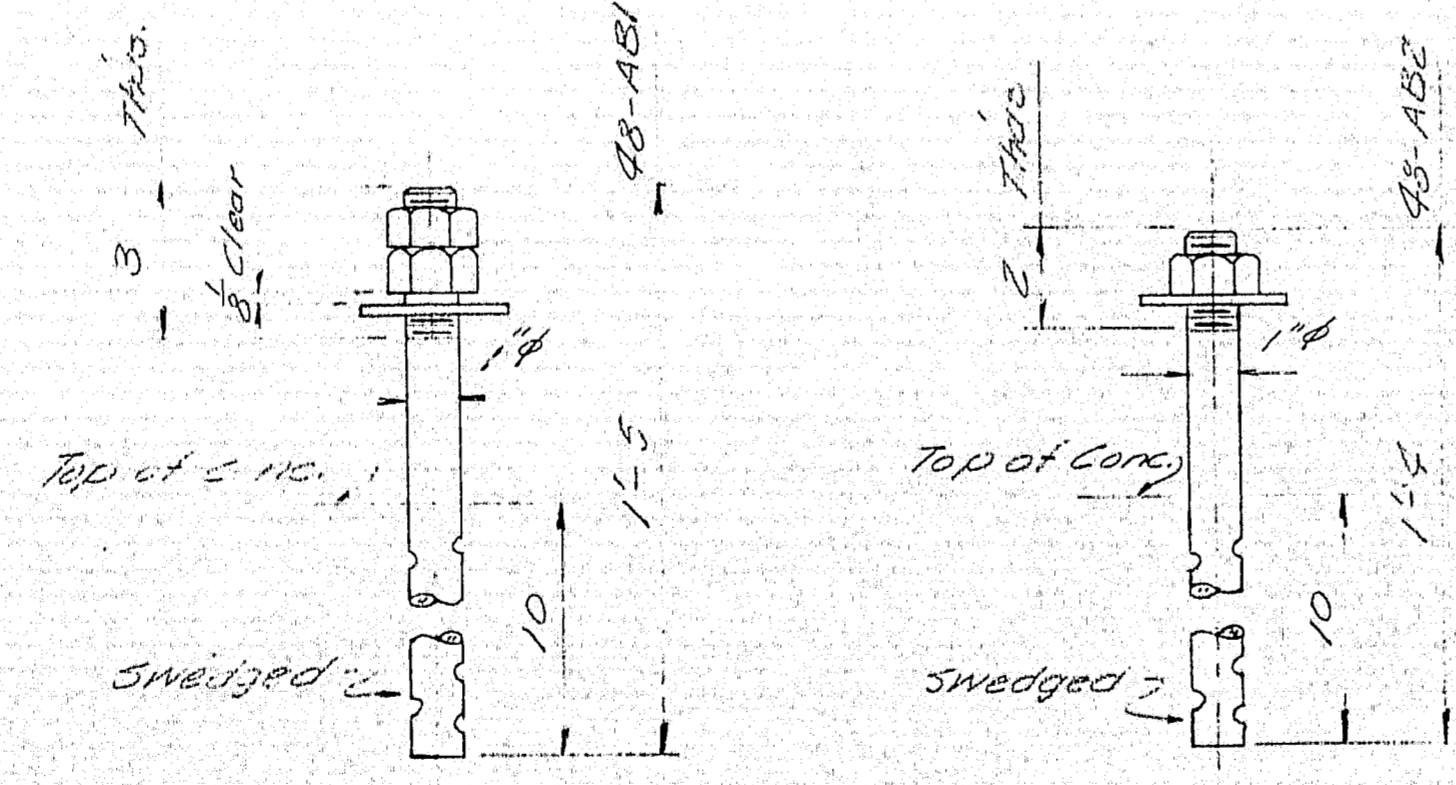
FIXED BEARING
FB2 6 Req'd



PINTLE DETAIL



DETAIL MPI



ANCHOR BOLTS

Part	Qty	Part	Qty	Part	Qty	Part	Qty
EB1	518	FB1	515	EB2	521	FB2	523
EB1	516	FB1	516	EB2	522	FB2	524
EB1	517	FB1	517	EB2	523	FB2	525
EB1	518	FB1	518	EB2	524	FB2	526
EB1	519	FB1	519	EB2	525	FB2	527
EB1	520	FB1	520	EB2	526	FB2	528
EB1	521	FB1	521	EB2	527	FB2	529
EB1	522	FB1	522	EB2	528	FB2	530
EB1	523	FB1	523	EB2	529	FB2	531
EB1	524	FB1	524	EB2	530	FB2	532

BEARING PLAN

PAINT NOTE:
Coat all finish surfaces ASA 250 & ASA 125 with white lead & fallow.
Do not paint lubrite bronze or areas in contact with lubrite bronze.
Paint all other surfaces with red lead and oil per M.S.H.C. Specs.

SHIP		BILL OF MATERIAL				DWG. NO.
MARK	NO.	MARK	SHAPE	LENGTH	WT.	REMARKS
SHIP 18		EB1				
18	1P1	R 6 x 2		0.8		
18	1P2	R 9 x 2		1.8		
18	1P3	R 9 x 2		1.8		
36	b1	F.B. 1/2 x 1/2		0.6		
36	b2	do		0.7		
36	d1	1" Rod		0.125		
SHIP 18		FB1				
18	1P2	R 6 x 2		0.8		
18	1P3	R 9 x 2		1.8		
36	d1	1" Rod		0.125		
SHIP 6		EB2				
6	5P1	R 7 x 2		1.8		
6	5P3	R 7 x 2		1.8		
SHIP 6		FB2				
6	5D2	R 7 x 2		1.8		
6	5P4	do		1.8		
AB1	48	1" Rod		1.5		
AB2	48	do		1.4		
144	shop	1" Nut				Hex nut 1" hole in center
96	shop	F.B. 3/2 x 1/2		0.32		
		Item 702-103				
		Item 703-9				
		18 bpl R 7 x 1/2		0.8		BRONZE Self-lubricating Ref 4722

SCALE WEIGH

SHOP CONNECTIONS: Welded
FIELD CONNECTIONS: Welded, Bolted
HOLES: As Noted
PAINT: As Noted

BEARING DETAIL
Bancroft & Martin Rolling Mills Company
South Portland, Maine
INTERSTATE 95 NORTHBOUND OVER EMERSON MILL RD. & B & A R.R. HAMPDEN, MAINE.
CUSTOMER: CONSTRUCTORS, INC.
DESIGNER: M.S.H.C.
ORDER NO. _____ DWG. NO. 86-93A-515

APP. 5-162

