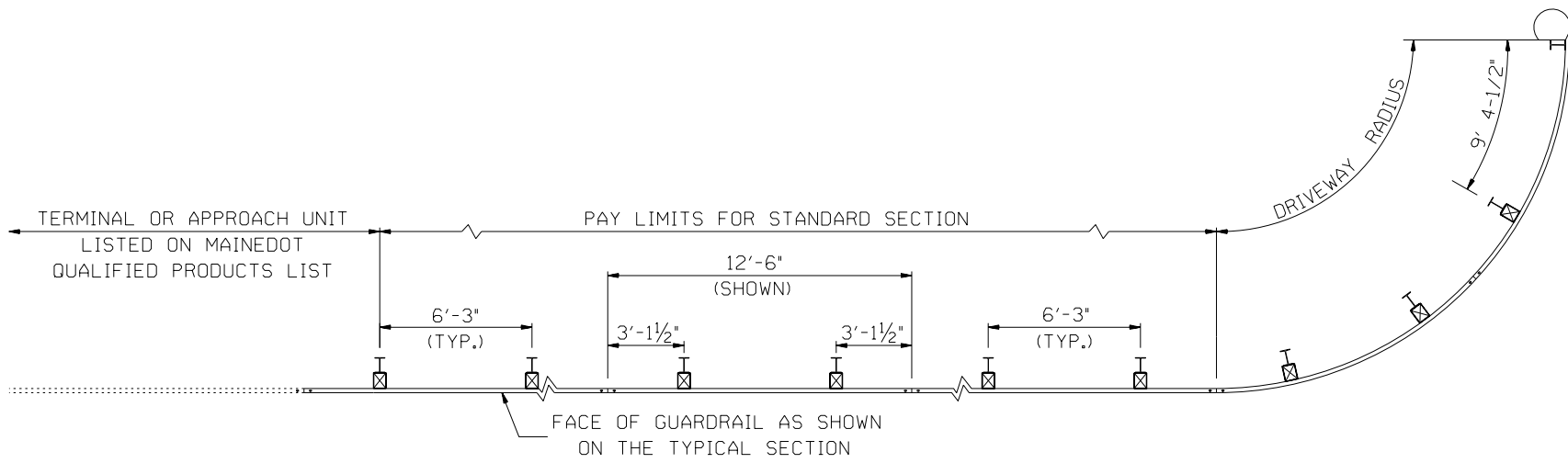


February 10, 2016

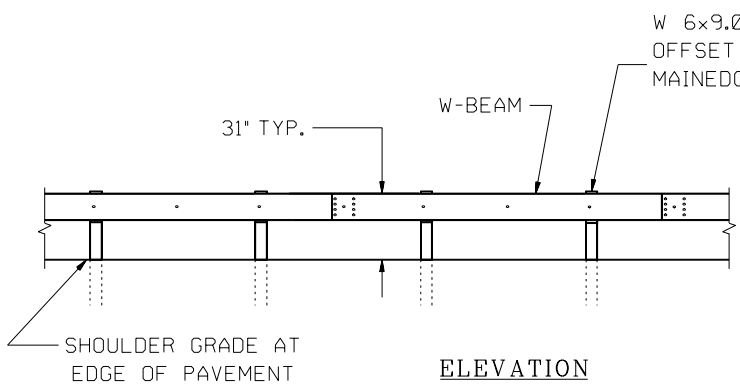
**SPECIAL PROVISION**  
**SECTION 606**  
**GUARDRAIL**

606.09 Basis of Payment: This section shall be amended with the addition of the following:

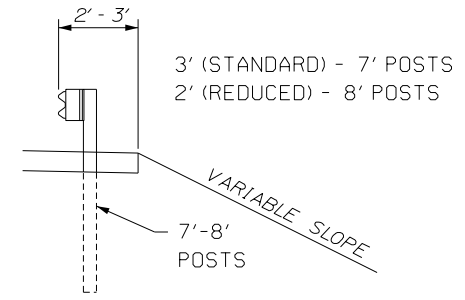
<u>Pay Item</u>	<u>Pay Unit</u>
606.1301      31" W-Beam Guardrail - Mid-Way Splice (Steel Post, 8" Offset Blocks, Single Faced)	Linear Foot
606.1302      31" W-Beam Guardrail - Mid-Way Splice (Steel Post, 8" Offset Blocks, Double Faced)	Linear Foot
606.1303      31" W-Beam Guardrail - Mid-Way Splice (Steel Post, 8" Offset Blocks, 15' Radius and Less)	Linear Foot
606.1304      31" W-Beam Guardrail - Mid-Way Splice (Steel Post, 8" Offset Blocks, Over 15' Radius)	Linear Foot
606.1305      31" W-Beam Guardrail - Mid-Way Splice Flared Terminal (31" Height)	Each
606.1306      31" W-Beam Guardrail - Mid-Way Splice Tangent Terminal (31" Height)	Each
606.1307      Bridge Transition (Asymmetrical) – Type 1	Each
606.1308      Buried-in-Slope Guardrail End, Mid-Way Splice	Each



PLAN

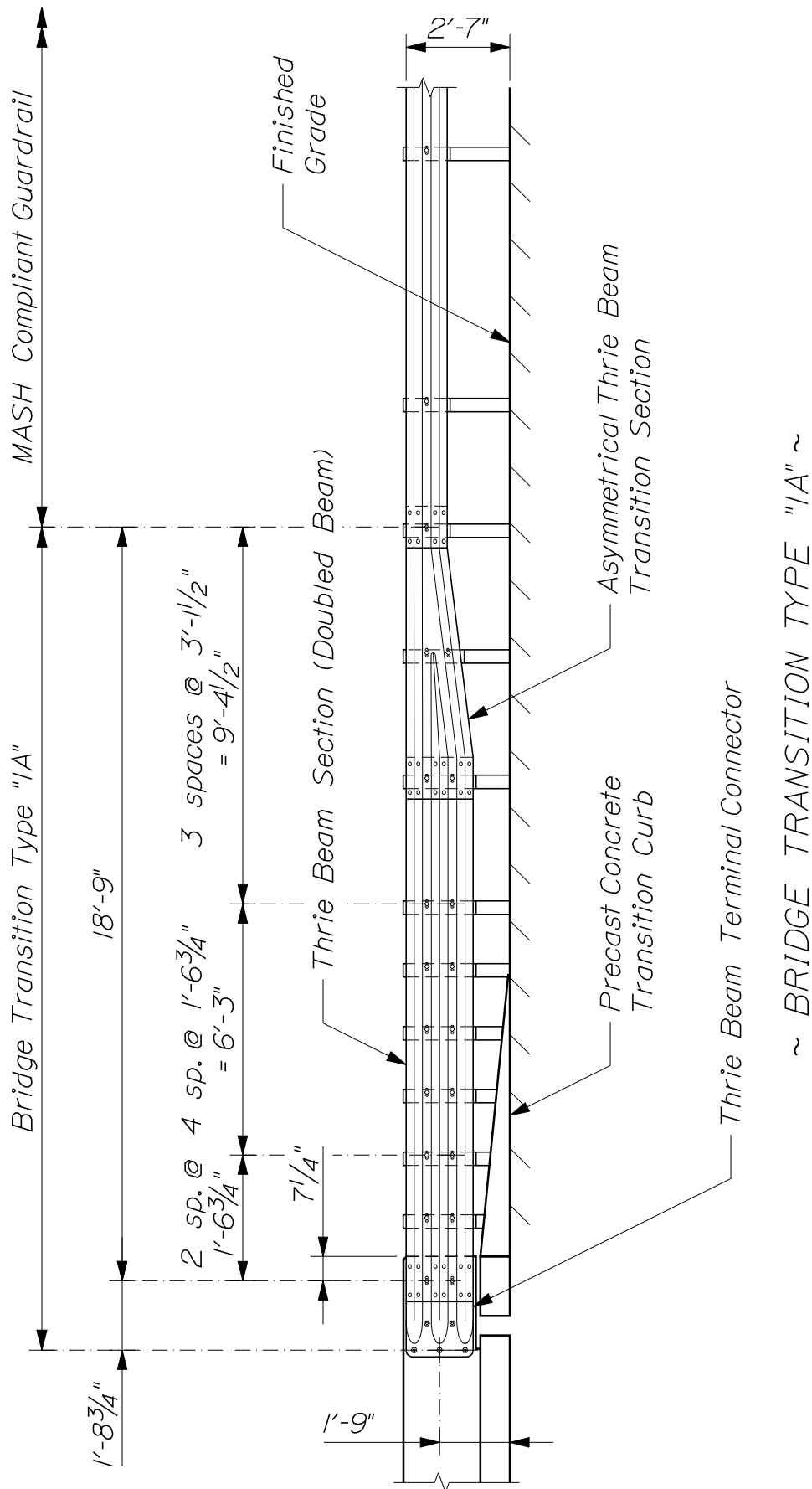


W 6x9.0 OR W 6x8.5 STEEL POST WITH 6" x 8" WOOD OFFSET BLOCK OR OTHER 8" BLOCK LISTED ON MAINEDOT QUALIFIED PRODUCTS LIST (TYP.)



CROSS SECTION

31" W-BEAM GUARDRAIL - MID-WAY SPLICE



~ BRIDGE TRANSITION TYPE "IA" ~

NOTE: Part designations are shown in "A Guide to Standardized Highway Barrier Hardware" as prepared and approved by the AASHTO - AGC - ARTBA Joint Committee, Task Force 13 Report.