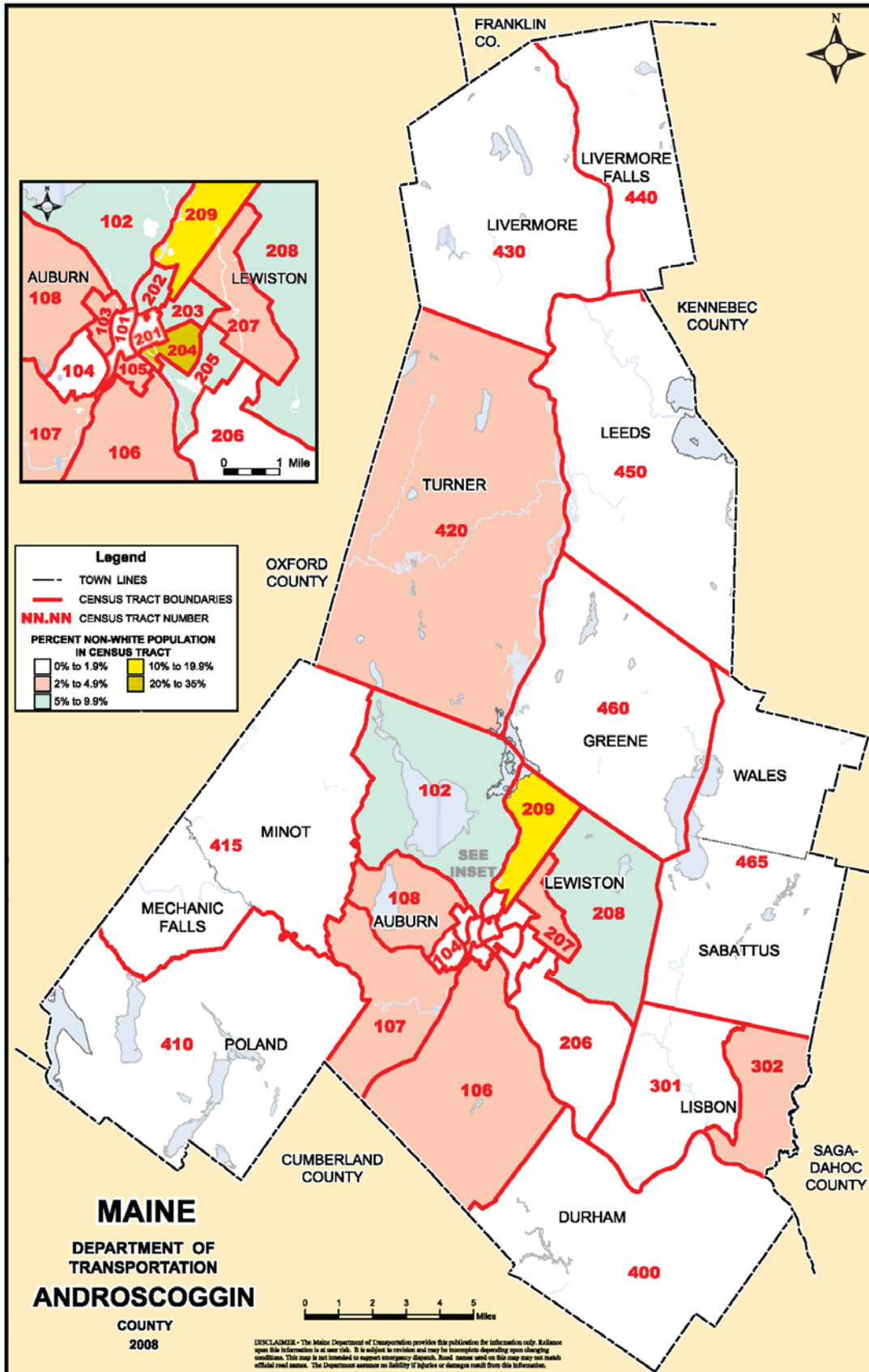


Androscoggin County
Race Demographics by Census Tract – 2010 Census File QT-P5

Census Tract	Total Population	White #	White %	Minority #	Minority %
101	1,714	1,609	93.9	105	6.1
102	4,603	4,238	92.1	365	7.9
103	2,468	2,349	95.2	119	4.8
104	2,119	2,079	98.1	40	1.9
105	2,030	1,971	97.1	59	2.9
106	3,047	2,937	96.4	110	3.6
107	3,088	3,022	97.9	66	2.1
108	3,986	3,861	96.9	125	3.1
201	1,577	1,062	67.3	515	32.7
202	1,283	1,174	91.5	109	8.5
203	6,683	6,037	90.3	646	9.7
204	3,770	2,566	68.1	1,204	31.9
205	3,713	3,514	94.6	199	5.4
206	2,708	2,674	98.7	34	1.3
207	4,891	4,764	97.4	127	2.6
208	7,556	6,972	92.3	584	7.7
209	4,411	3,797	86.1	614	13.9
301	4,624	4,545	98.3	79	1.7
302	4,385	4,288	97.8	97	2.2
400	3,848	3,803	98.8	45	1.2
410	5,376	5,304	98.7	72	1.3
415	5,638	5,569	98.8	69	1.2
420	5,734	5,613	97.9	121	2.1
430	2,095	2,079	99.2	16	0.8
440	3,187	3,125	98.1	62	1.9
450	2,326	2,297	98.8	29	1.2
460	4,350	4,305	99.0	45	1.0
465	6,492	6,416	98.8	76	1.2
Total, Androscoggin County	107,702	101,970	94.7	5,732	5.3



Legend

- TOWN LINES
- CENSUS TRACT BOUNDARIES
- NN.NN CENSUS TRACT NUMBER

PERCENT NON-WHITE POPULATION IN CENSUS TRACT

0% to 1.9%	10% to 19.9%
2% to 4.9%	20% to 35%
5% to 9.9%	

0 1 2 3 4 5 Miles

DISCLAIMER - The Maine Department of Transportation provides this publication for information only. Reliance upon this information is at user risk. It is subject to revision and may be inaccurate depending upon changing conditions. This map is not intended to support emergency dispatch. Road names used on this map may not match official road names. The Department assumes no liability of injuries or damages result from this information.