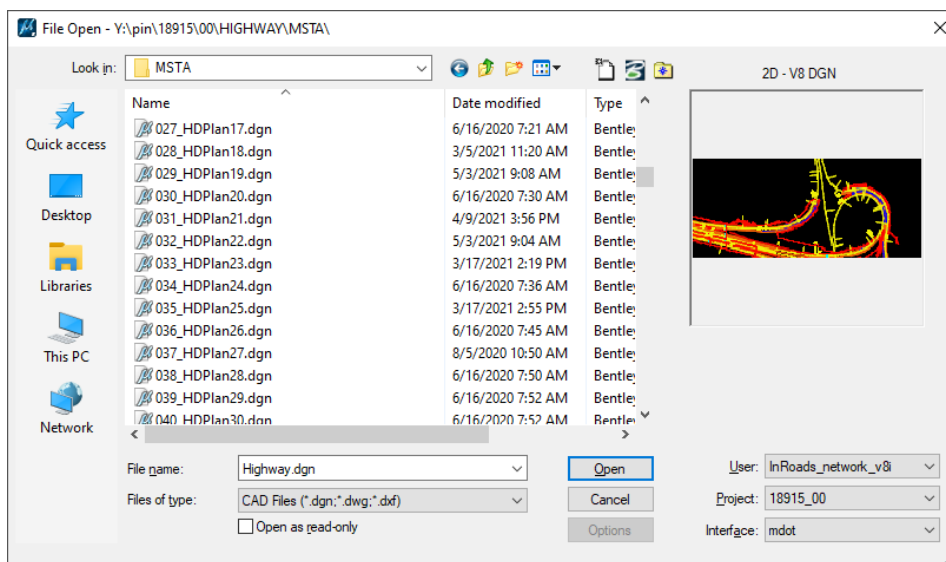


MaineDOT Project Configuration

Bureau of Project Development Projects

MaineDOT currently uses a project Work Identification Number (WIN) to manage its projects within the Bureau of Project Development (BPD) and those WINs have been incorporated into the current folder and file structure ([See MaineDOT Folder Structure and File Standards](#)) for CADD use.

When a user opens MicroStation and sees the first dialog box (shown below), they select a **User** profile (which is **InRoads_network_v8i** by default) that will give them either local or network access. The next field is the **Project** field which populates with all of the PCF files for each WIN. When a user selects the WIN for their project, the window navigates to that exact project and opens the MSTA folder for the discipline that is set in the user's preference file.

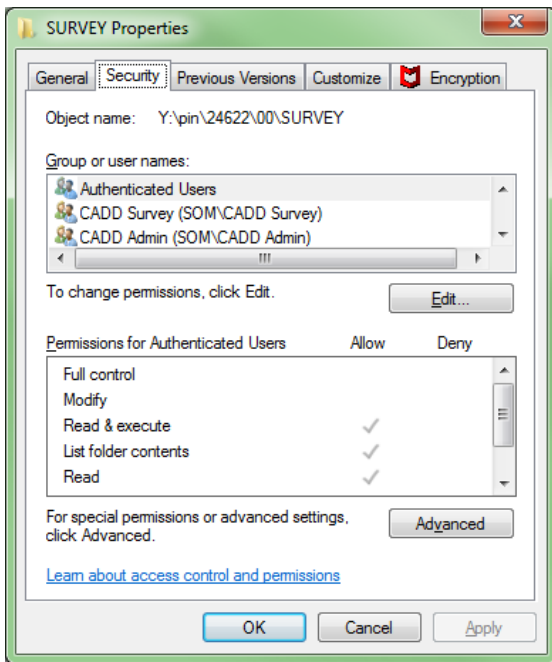


The current user groups and folders opened are as follows:

- HIGHWAY – Opens HIGHWAY\MSTA
- BRIDGE – Opens BRIDGE\MSTA
- BRMAINT – Opens MAINT\MSTA
- CONST – Opens CONST\MSTA
- ENVIRON – Opens ENVIRON\MSTA
- GEOTECH – Opens GEOTECH\MSTA
- HEARING – Opens HEARING\MSTA
- ROW – Opens ROW\MSTA
- SURVEY – Opens SURVEY\MSTA
- TRAFFIC – Opens TRAFFIC\MSTA
- UTILITIES – Opens UTILITIES\MSTA

MULTIMODE is another user group that should be added and HEARING will be removed as it is no longer used.

Windows Security user groups have also been set up for each of these discipline folders so that only certain users have write access to the folders and files within as shown below:



These user groups are as follows:

- MDOT-CADDBLIND-RO – Read only access
- CADD Admin – Write access to all folders and files
- CADD Bridge – Write access to all folders and files in BRIDGE
- CADD Const – Write access to all folders and files in CONST
- CADD Environ – Write access to all folders and files in ENVIRON
- CADD Geotech – Write access to all folders and files in GEOTECH
- CADD GIS – Write access to all folders and files in GIS
- CADD Highway – Write access to all folders and files in HIGHWAY
- CADD Maint – Write access to all folders and files in Maint
- CADD Multimode – Write access to all folders and files in multimode
- CADD Planning – Write access to all folders and files in PLANNING
- CADD ROW – Write access to all folders and files in ROW and PROPERTY
- CADD Survey – Write access to all folders and files in SURVEY
- CADD Traffic – Write access to all folders and files in TRAFFIC
- CADD Utilities – Write access to all folders and files in UTILITIES

Users can belong to multiple groups. The Office of Information Technology maintains these user groups on behalf of MaineDOT.

Crash Records Section Projects

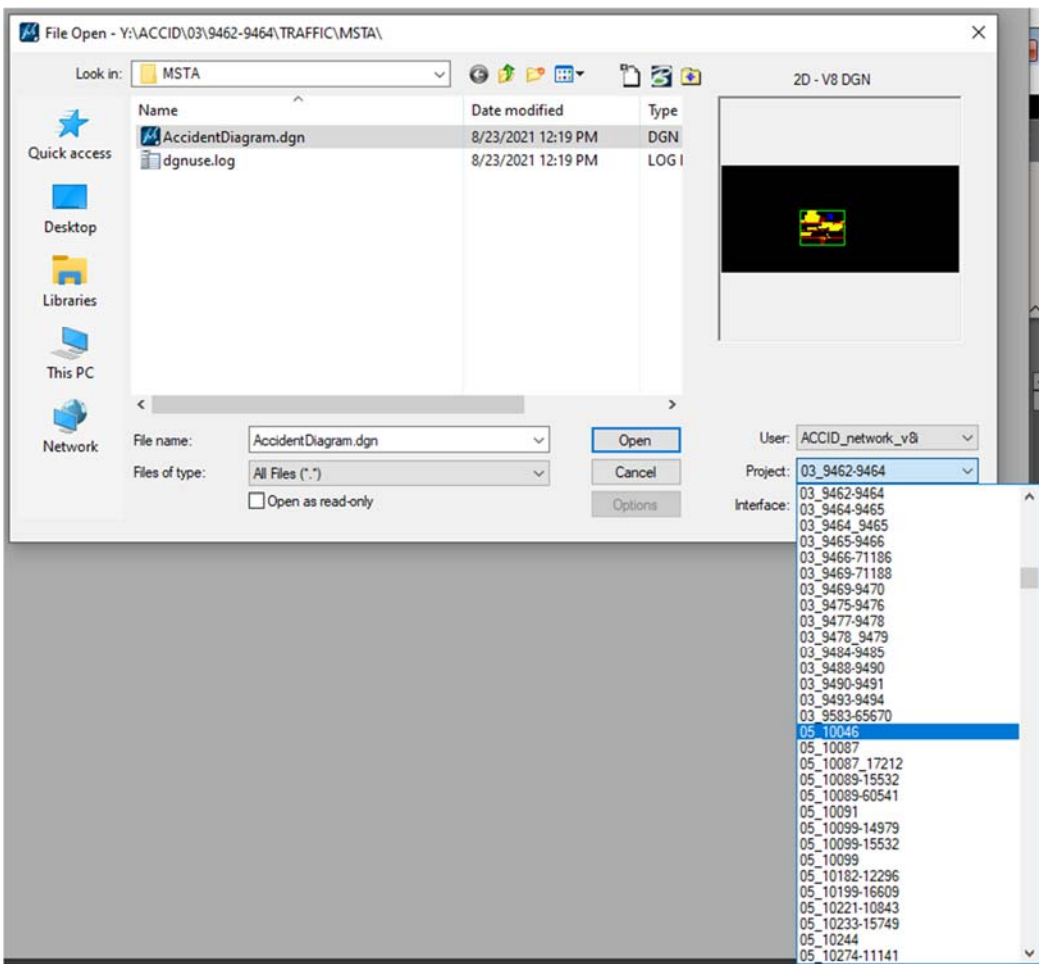
The Crash Records Section in the Office of Safety does not use the WIN structure of BPD but instead uses unique County codes to set up folders with folders of High Crash Location (HCL) nodes within. These codes are as follows:

- 01
- 03
- 05
- 07

09
11
13
15
17
19
21
23
25
27
29
31

Currently they use PCF files that contain the nodes of the particular HCLs that open the corresponding network share folder in MicroStation. However, these PCFs are not actually used for any information within unlike BPD projects.

In the first dialog box (shown below), the **User** is set to ACCID_network_v8i by default and the **Project** is set to the combination of the county code prefix and the nodes for the particular HCL of interest.



HCL locations within a county are added periodically and there is a batch file currently developed to copy a template folder structure containing a .DGN file containing the crash diagram for each new HCL needed.