

NOTES
 1. Proposed utility locations depicted for discussion purposes only and subject to change per utility team member direction and coordination with utilities.



BEALS ISLAND BRIDGE
 MOOSABEC REACH
 JONESPORT & BEALS WASHINGTON COUNTY
ROADWAY PLAN
 (SHEET 1 OF 6)

PROJ. MANAGER	---	BY	---	DATE	---
DESIGN-DETAILED	JAW	KDW	---	3/15	---
CHECKED-REVIEWED	RSB	SMH	---	3/15	---
DESIGN2-DETAILED2	---	---	---	---	---
DESIGN3-DETAILED3	---	---	---	---	---
REVISIONS 1	---	---	---	---	---
REVISIONS 2	---	---	---	---	---
REVISIONS 3	---	---	---	---	---
REVISIONS 4	---	---	---	---	---
FIELD CHANGES	---	---	---	---	---

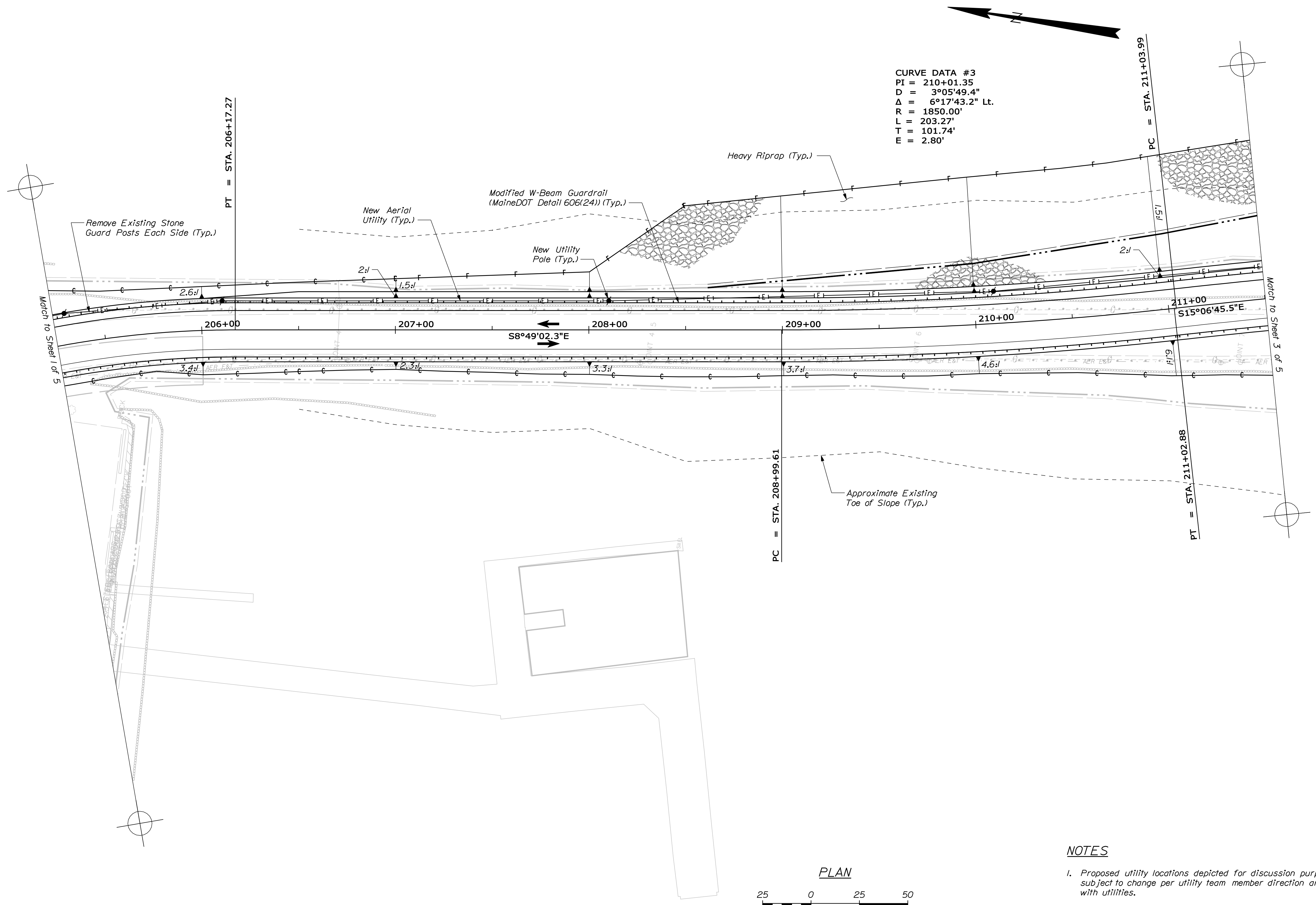
SIGNATURE	---
P.E. NUMBER	---
DATE	---

STATE OF MAINE
 DEPARTMENT OF TRANSPORTATION

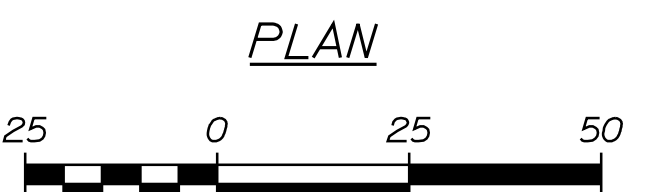
BRIDGE NO. 5500

WIN
 022626.00

BRIDGE PLANS



CURVE DATA #3
 PI = 210+01.35
 D = 3°05'49.4"
 Δ = 6°17'43.2" Lt.
 R = 1850.00'
 L = 203.27'
 T = 101.74'
 E = 2.80'



PLAN

NOTES

- Proposed utility locations depicted for discussion purposes only and subject to change per utility team member direction and coordination with utilities.

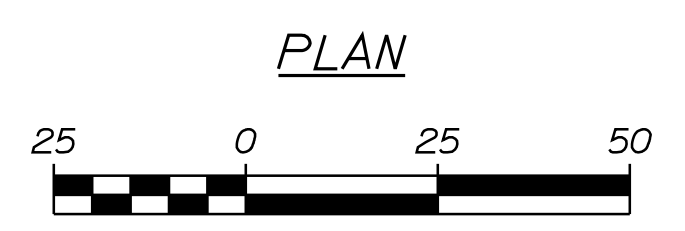
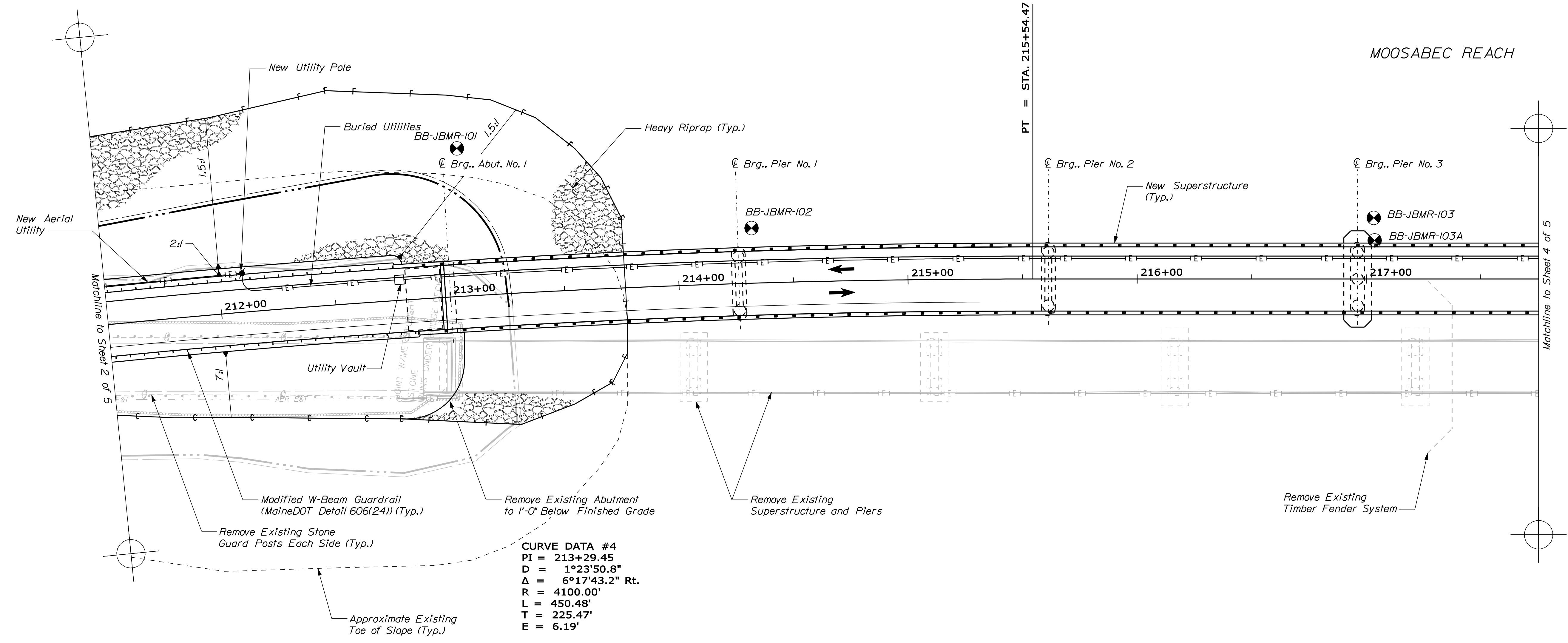
STATE OF MAINE DEPARTMENT OF TRANSPORTATION		BRIDGE NO. 5500 WIN 022626.00 BRIDGE PLANS	
BEALS ISLAND BRIDGE MOOSABEC REACH JONESPORT & BEALS WASHINGTON COUNTY		ROADWAY PLAN (SHEET 2 OF 6)	
PROJ. MANAGER	BY	DATE	SIGNATURE
DESIGN DETAILED JAW	KDW	3/15	
CHECKED-REVIEWED RSP	SMH	3/15	
DESIGN DETAILED			
REVISIONS 1			P.E. NUMBER
REVISIONS 2			DATE
REVISIONS 3			
REVISIONS 4			
FIELD CHANGES			
SHEET NUMBER		3	
		OF 17	

Date: 5/7/2015

Username: kventworth

Division: Structures

Filename: ... \st\planset\004_BDP\plan_03.dgn



NOTES

1. Proposed utility locations depicted for discussion purposes only and subject to change per utility team member direction and coordination with utilities.

STATE OF MAINE
 DEPARTMENT OF TRANSPORTATION

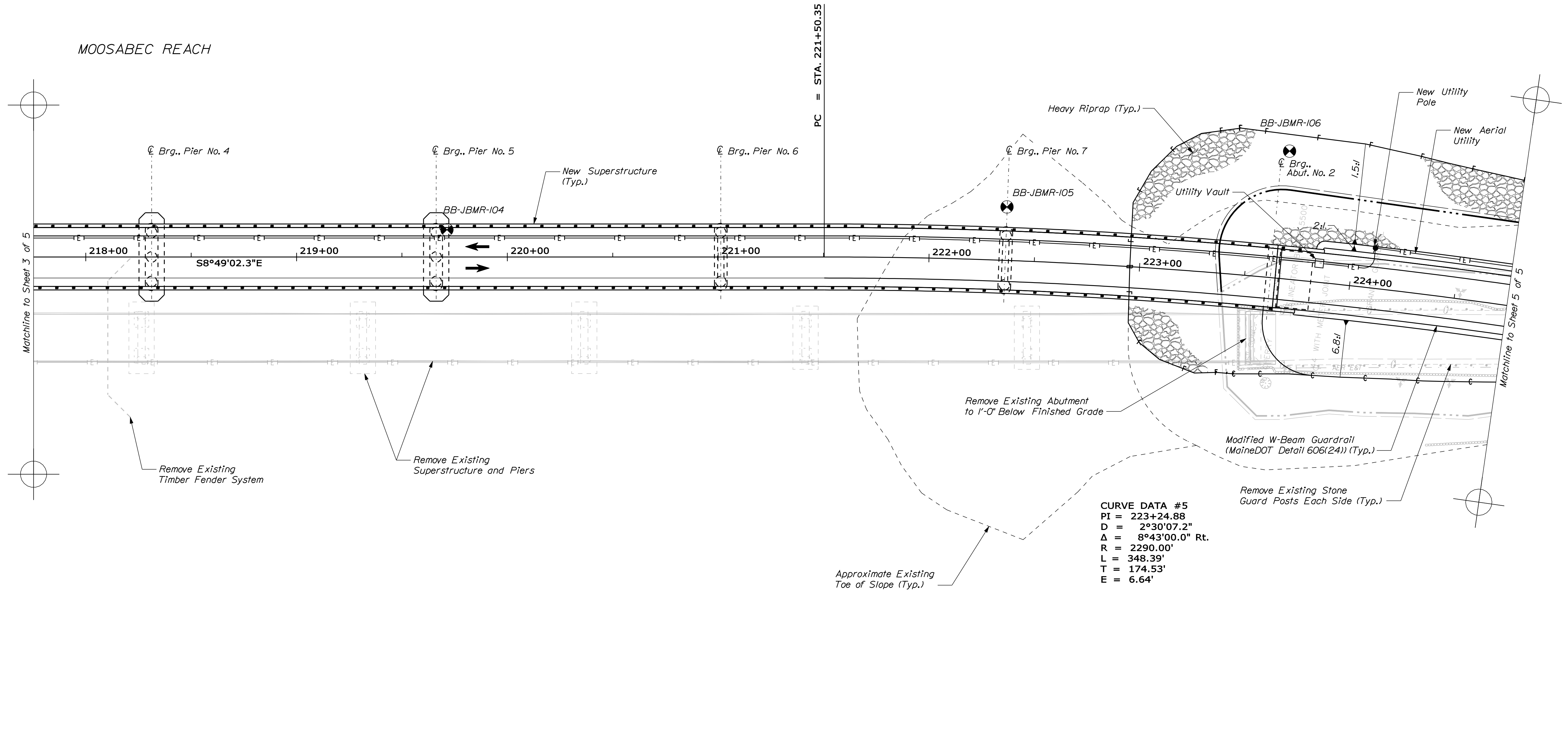
BRIDGE NO. 6500
 WIN 022626.00
 BRIDGE PLANS

PROJ. MANAGER	DATE	BY	DATE
DESIGN DETAILED	JAW	KCW	3/15
CHECKED/REVIEWED	RSB	SKH	3/15
DESIGN DETAILED
DESIGN DETAILED
REVISIONS 1
REVISIONS 2
REVISIONS 3
REVISIONS 4
FIELD CHANGES

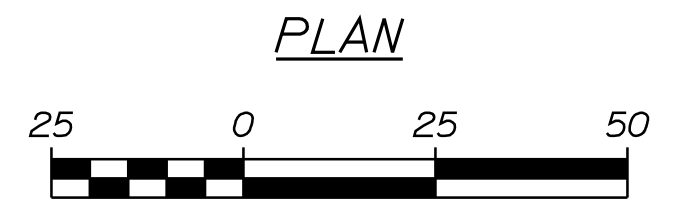
BEALS ISLAND BRIDGE
 MOOSABEC REACH
 JONESPORT & BEALS WASHINGTON COUNTY
 ROADWAY PLAN
 (SHEET 3 OF 6)

SHEET NUMBER
4
 OF 17

Filename: ... \st\planset\005_BDP\plan_04.dgn
 Division: Structures
 Username: kventworth
 Date: 5/7/2015

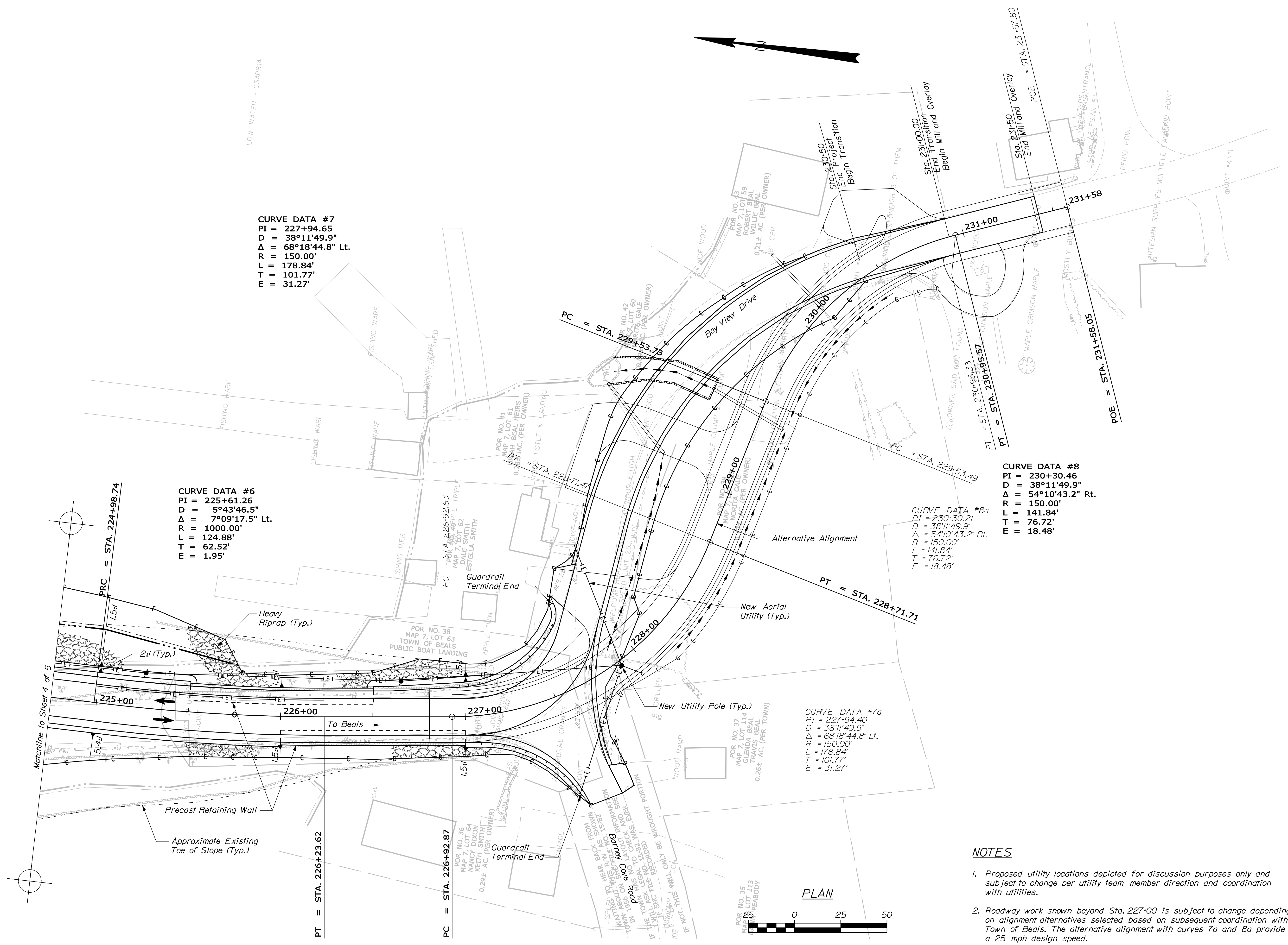


CURVE DATA #5
 PI = 223+24.88
 D = 2°30'07.2"
 Δ = 8°43'00.0" Rt.
 R = 2290.00'
 L = 348.39'
 T = 174.53'
 E = 6.64'



NOTES
 1. Proposed utility locations depicted for discussion purposes only and subject to change per utility team member direction and coordination with utilities.

STATE OF MAINE DEPARTMENT OF TRANSPORTATION		WIN 022626.00	BRIDGE NO. 5500 BRIDGE PLANS
BEALS ISLAND BRIDGE MOOSABEC REACH JONESPORT & BEALS WASHINGTON COUNTY		ROADWAY PLAN (SHEET 4 OF 6)	
PROJ. MANAGER	BY	DATE	SIGNATURE
DESIGN DETAILED JAW	KW	3/15	
CHECKED-REVIEWED RSP	SMH	3/15	
DESIGN DETAILED			
DESIGN DETAILED			
REVISIONS 1			P.E. NUMBER
REVISIONS 2			DATE
REVISIONS 3			
REVISIONS 4			
FIELD CHANGES			
SHEET NUMBER		5	
OF 17			



LOW WATER - 03APR14

CURVE DATA #7
 PI = 227+94.65
 D = 38°11'49.9"
 Δ = 68°18'44.8" Lt.
 R = 150.00'
 L = 178.84'
 T = 101.77'
 E = 31.27'

CURVE DATA #6
 PI = 225+61.26
 D = 5°43'46.5"
 Δ = 7°09'17.5" Lt.
 R = 1000.00'
 L = 124.88'
 T = 62.52'
 E = 1.95'

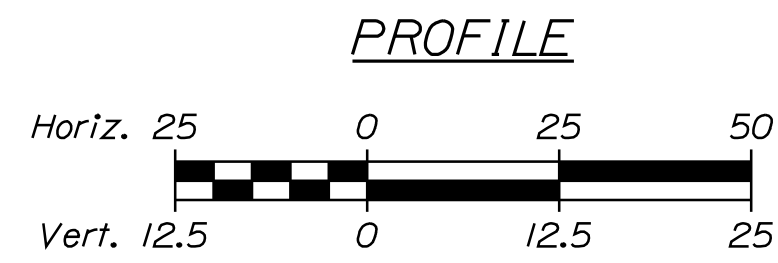
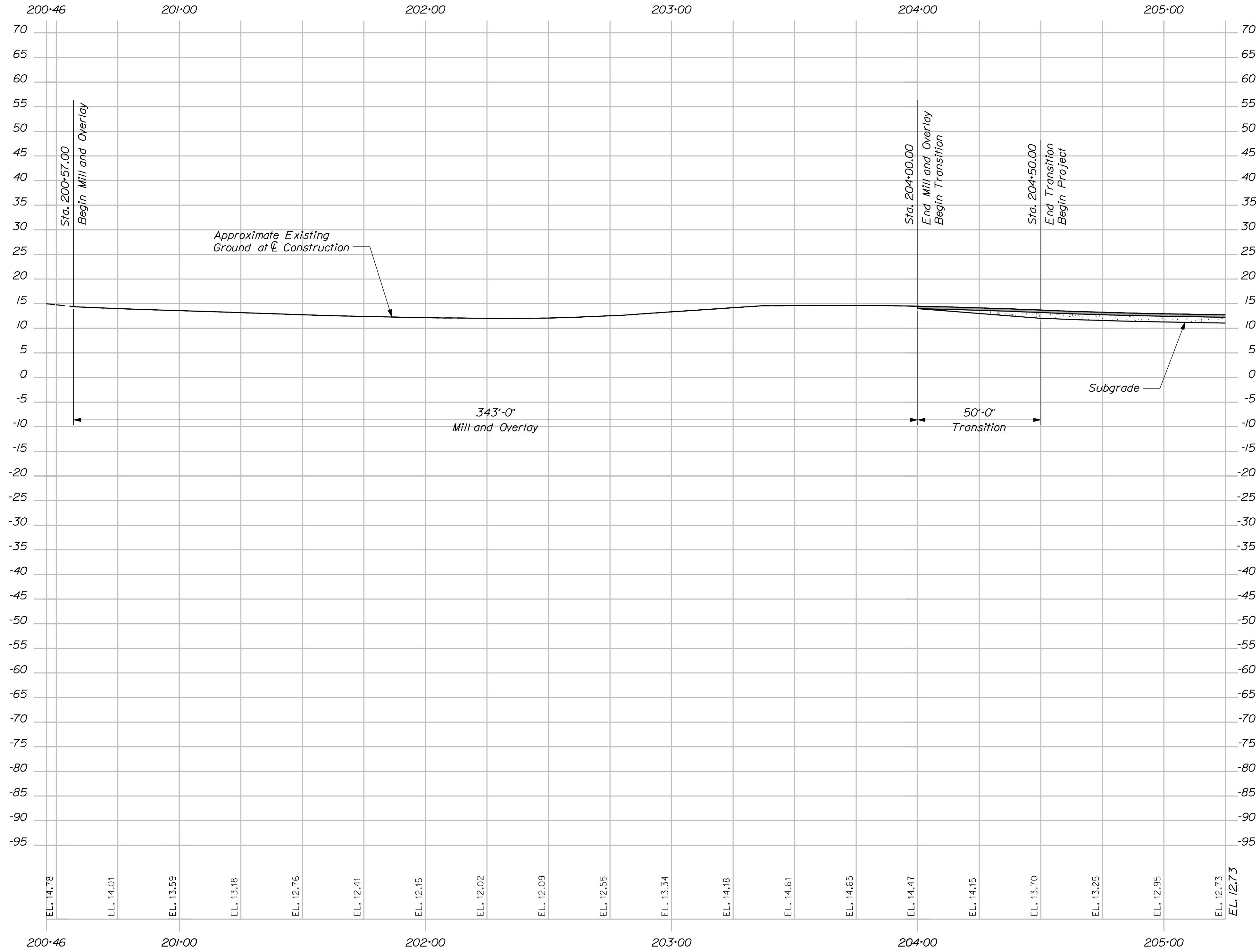
CURVE DATA #8a
 PI = 230+30.21
 D = 38°11'49.9"
 Δ = 54°10'43.2" Rt.
 R = 150.00'
 L = 141.84'
 T = 76.72'
 E = 18.48'

CURVE DATA #7a
 PI = 227+94.40
 D = 38°11'49.9"
 Δ = 68°18'44.8" Lt.
 R = 150.00'
 L = 178.84'
 T = 101.77'
 E = 31.27'

NOTES

- Proposed utility locations depicted for discussion purposes only and subject to change per utility team member direction and coordination with utilities.
- Roadway work shown beyond Sta. 227+00 is subject to change depending on alignment alternatives selected based on subsequent coordination with the Town of Beals. The alternative alignment with curves 7a and 8a provide a 25 mph design speed.

STATE OF MAINE		DEPARTMENT OF TRANSPORTATION	
BEALS ISLAND BRIDGE		JONESPORT & BEALS WASHINGTON COUNTY	
MOOSABEC REACH		ROADWAY PLAN	
		(SHEET 6 OF 6)	
PROJ. MANAGER	DATE	BY	DATE
DESIGN-DETAILED	JAW	KDW	3/15
CHECKED-REVIEWED	RSB	SMH	3/15
DESIGNS-DETAILED	---	---	---
DESIGNS-DETAILED	---	---	---
REVISIONS 1	---	---	---
REVISIONS 2	---	---	---
REVISIONS 3	---	---	---
REVISIONS 4	---	---	---
FIELD CHANGES	---	---	---
SHEET NUMBER		BRIDGE NO. 6500	
6		WIN	
OF 17		022626.00	
		BRIDGE PLANS	



STATE OF MAINE
DEPARTMENT OF TRANSPORTATION

SIGNATURE

DATE

PROJ. MANAGER	BY	DATE
DESIGN DETAILED	KDW	3/15
CHECKED-REVIEWED	SMH	3/15
DESIGNS DETAILED	---	---
REVISIONS 1	---	---
REVISIONS 2	---	---
REVISIONS 3	---	---
REVISIONS 4	---	---
FIELD CHANGES	---	---

BEALS ISLAND BRIDGE
MOOSABEC REACH
JONESPORT & BEALS WASHINGTON COUNTY

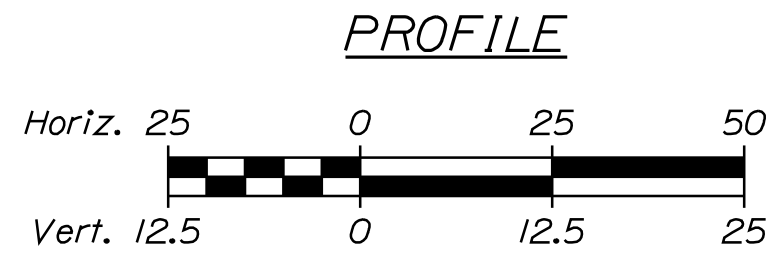
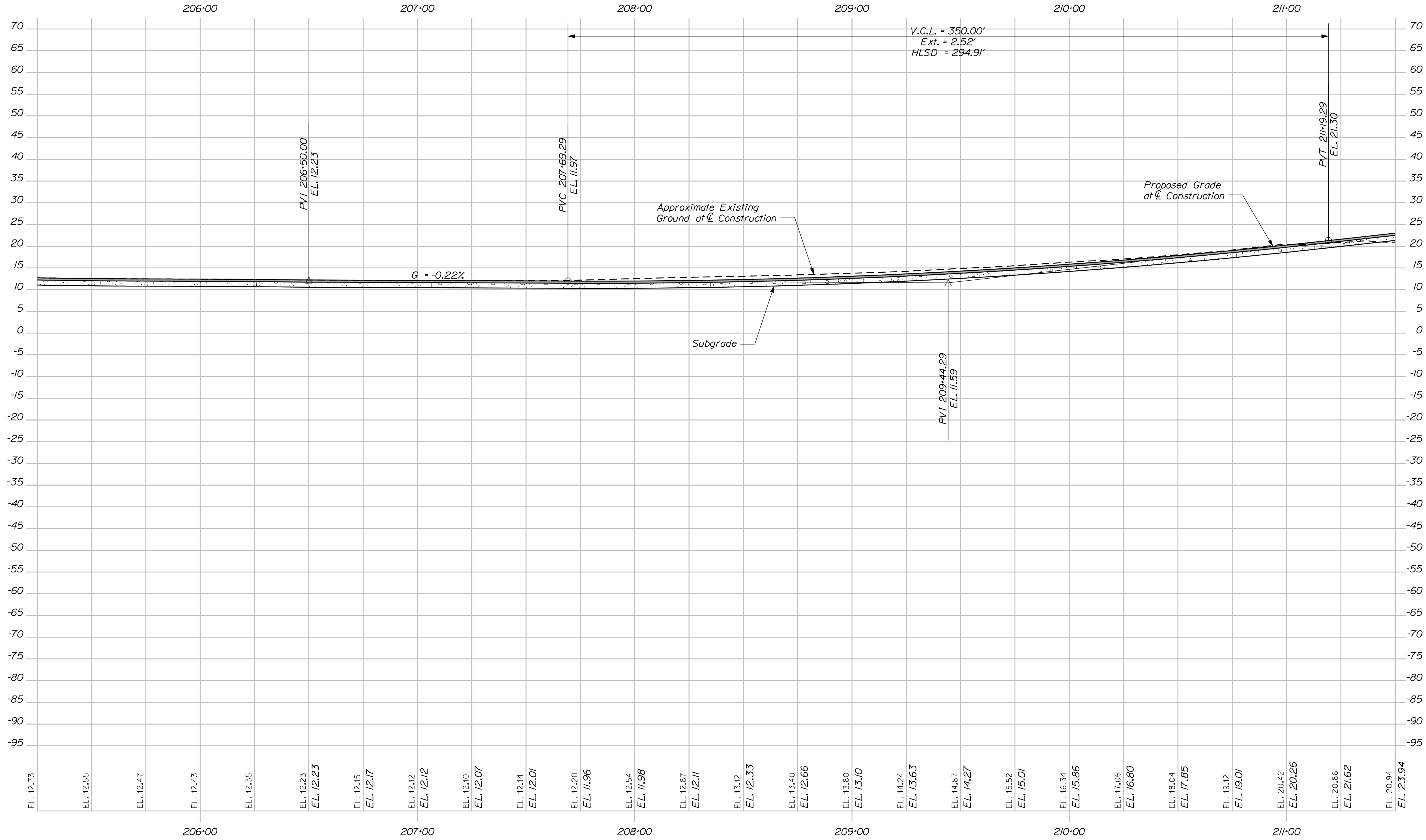
SHEET NUMBER

17

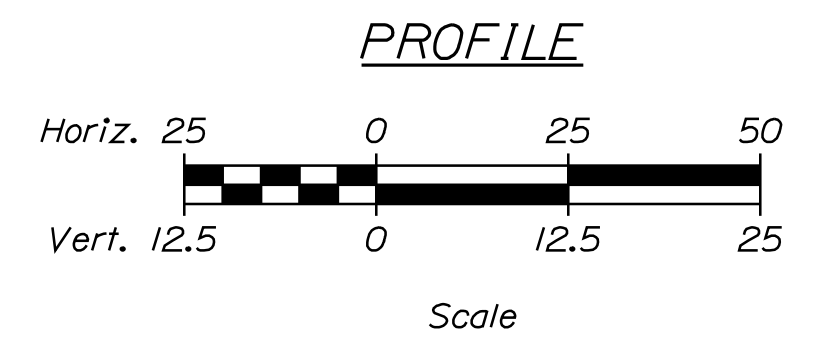
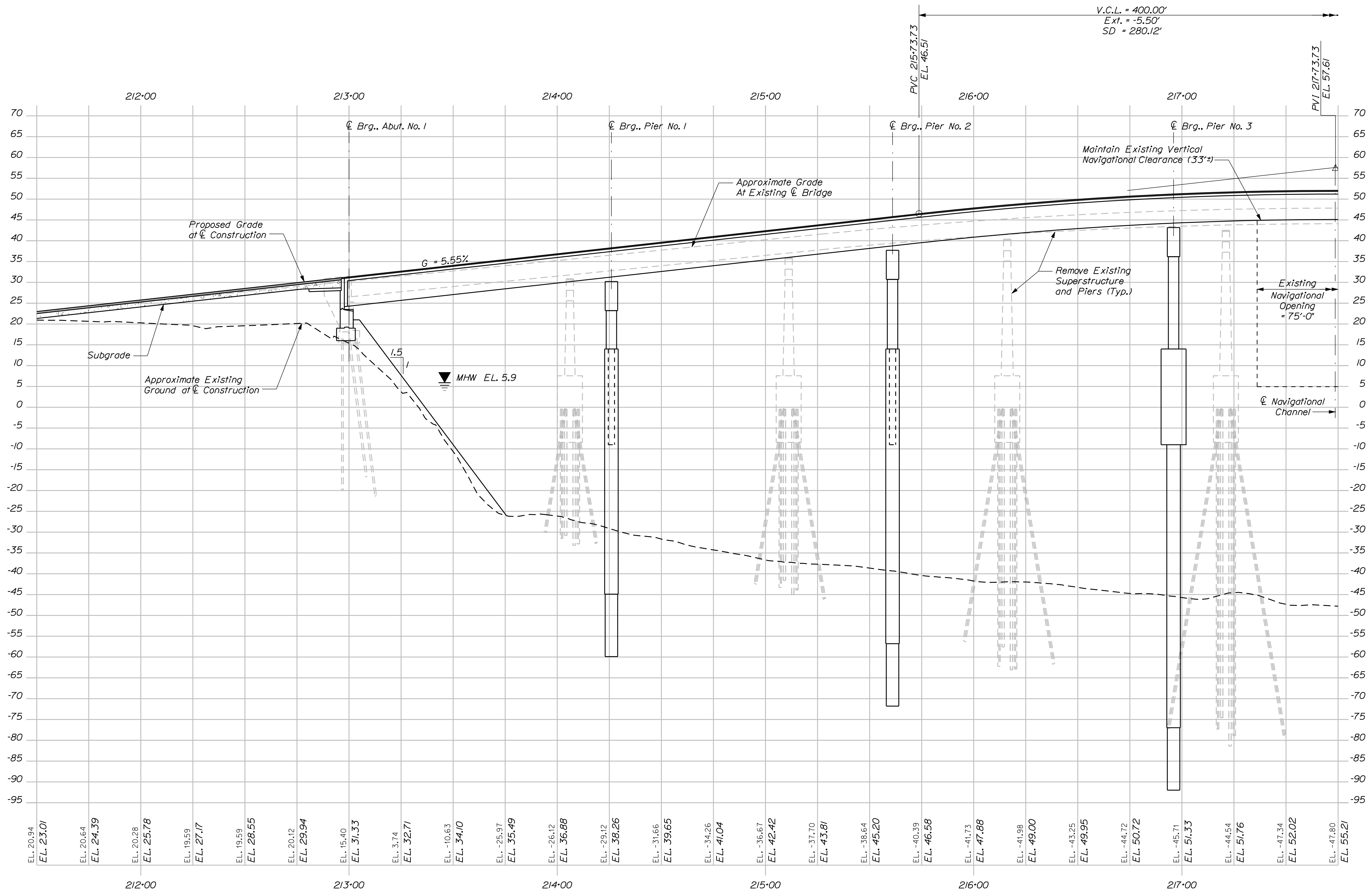
PROFILE (SHEET 1 OF 5)

OF 17

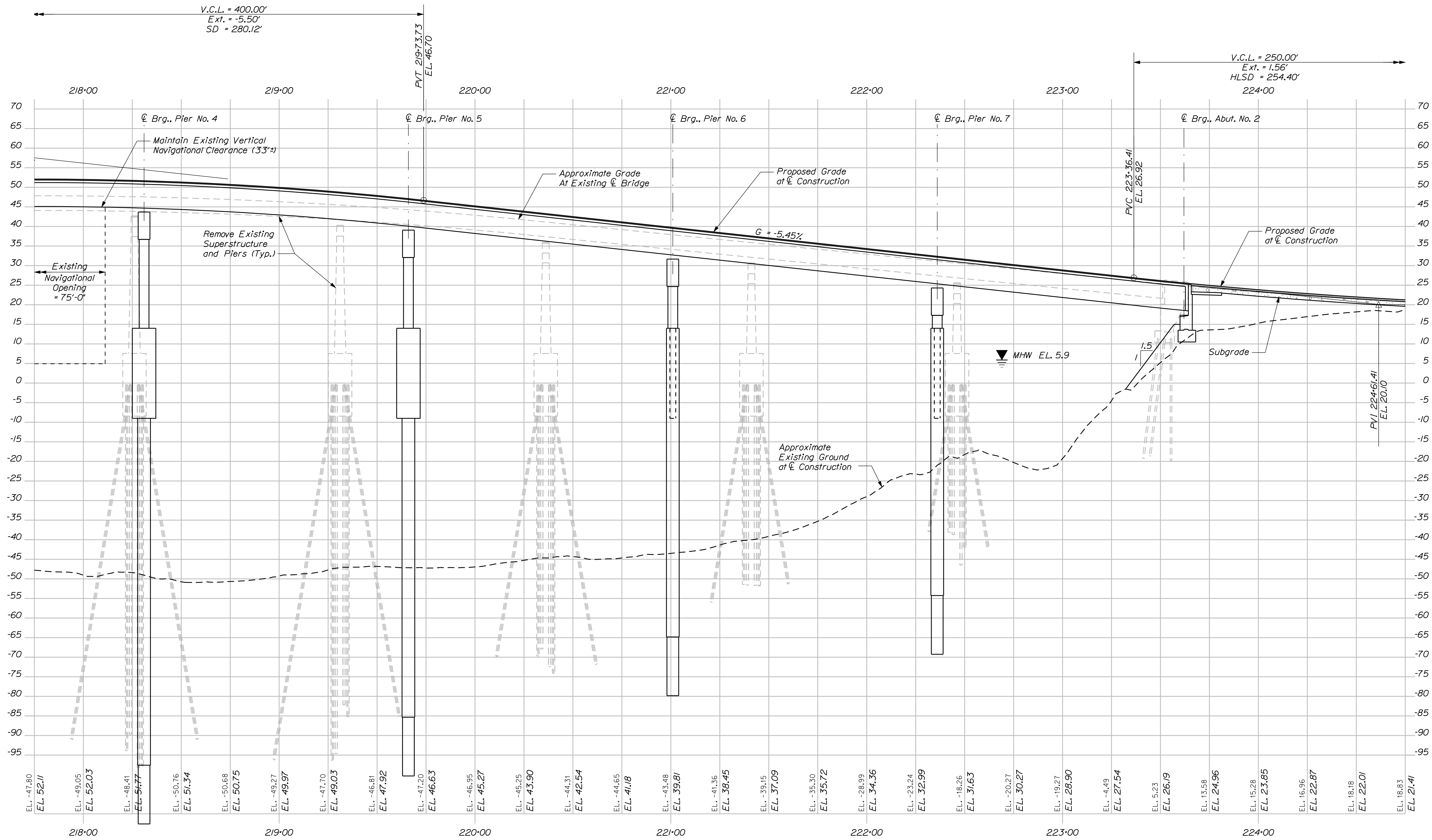
BRIDGE NO. 5500
WIN
022626.00
BRIDGE PLANS



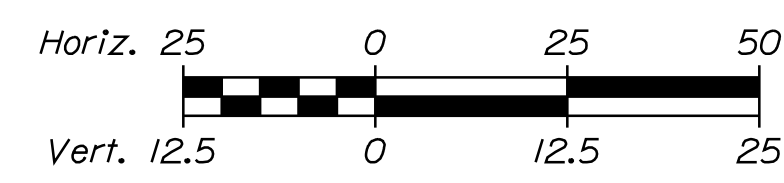
STATE OF MAINE		DEPARTMENT OF TRANSPORTATION	
BEALS ISLAND BRIDGE		JONESPORT & BEALS WASHINGTON COUNTY	
MOOSABEC REACH		PROFILE (SHEET 2 OF 5)	
BRIDGE NO. 5500	WIN 022626.00	BRIDGE PLANS	
DESIGN JAW	DATE 3/15	SIGNATURE	
CHECKED RSP	BY KDW	P.E. NUMBER	
DESIGN DETAILED	DATE 3/15	DATE	
REVISIONS 1			
REVISIONS 2			
REVISIONS 3			
REVISIONS 4			
FIELD CHANGES			



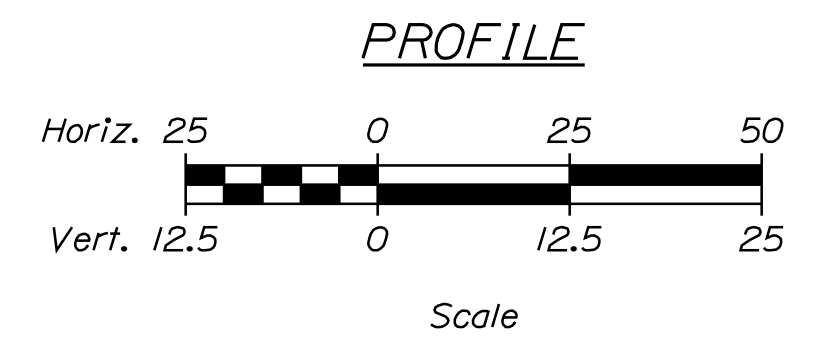
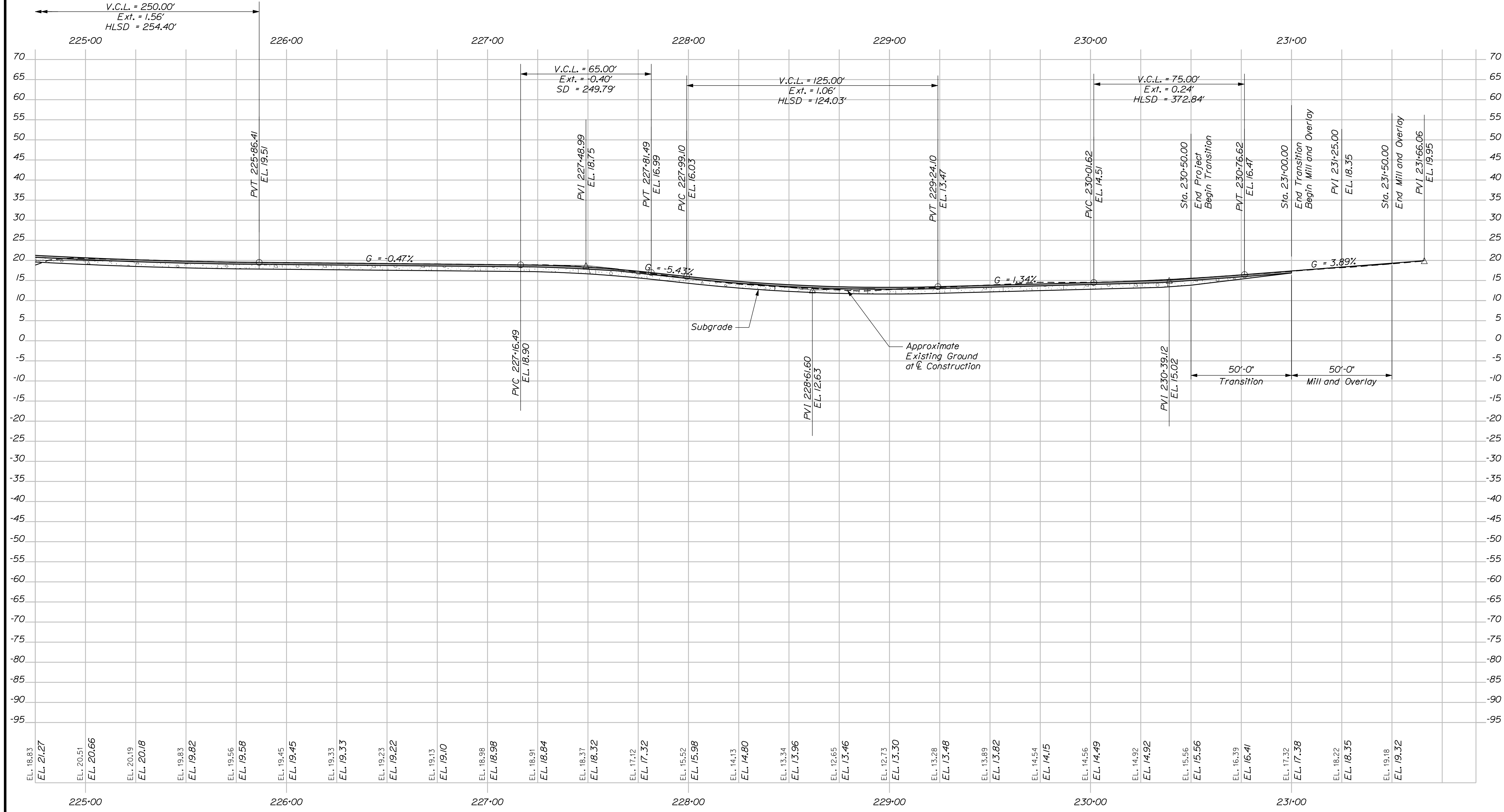
STATE OF MAINE		DEPARTMENT OF TRANSPORTATION	
BEALS ISLAND BRIDGE		MOOSABEC REACH	
JONESPORT & BEALS WASHINGTON COUNTY		PROFILE (SHEET 3 OF 5)	
SHEET NUMBER		9	
BRIDGE NO. 5500		WIN 022626.00	
BRIDGE PLANS		DATE	
DESIGN/REVIEWED	JAW	DATE	3/15
CHECKED/REVIEWED	RSP	BY	KDW
DESIGN/REVIEWED	SMH	DATE	3/15
REVISIONS 1	---	BY	---
REVISIONS 2	---	DATE	---
REVISIONS 3	---	BY	---
REVISIONS 4	---	DATE	---
FIELD CHANGES			
SIGNATURE		P.E. NUMBER	
DATE		DATE	



PROFILE



STATE OF MAINE		DEPARTMENT OF TRANSPORTATION	
BEALS ISLAND BRIDGE		JONESPORT & BEALS WASHINGTON COUNTY	
MOOSABEC REACH		PROFILE (SHEET 4 OF 5)	
SHEET NUMBER		10	
OF 17		BRIDGE NO. 5500	
WIN		022626.00	
BRIDGE PLANS		DATE	
SIGNATURE	P.E. NUMBER	DATE	FIELD CHANGES
BY	DATE	DATE	DATE
PROJ. MANAGER	DATE	DATE	DATE
DESIGN DETAILED	DATE	DATE	DATE
CHECKED/REVIEWED	DATE	DATE	DATE
DESIGN DETAILED	DATE	DATE	DATE
REVISIONS 1	DATE	DATE	DATE
REVISIONS 2	DATE	DATE	DATE
REVISIONS 3	DATE	DATE	DATE
REVISIONS 4	DATE	DATE	DATE



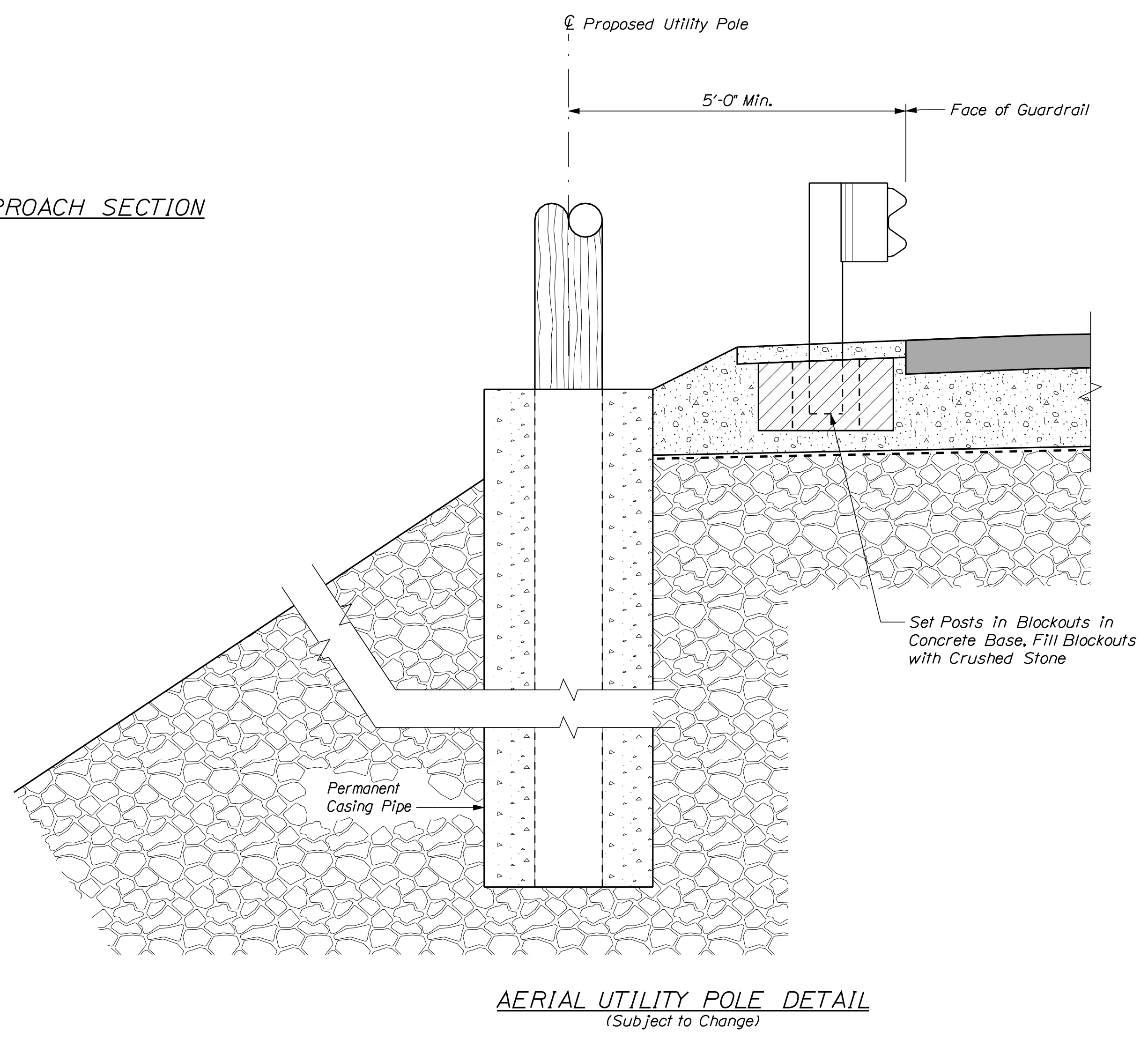
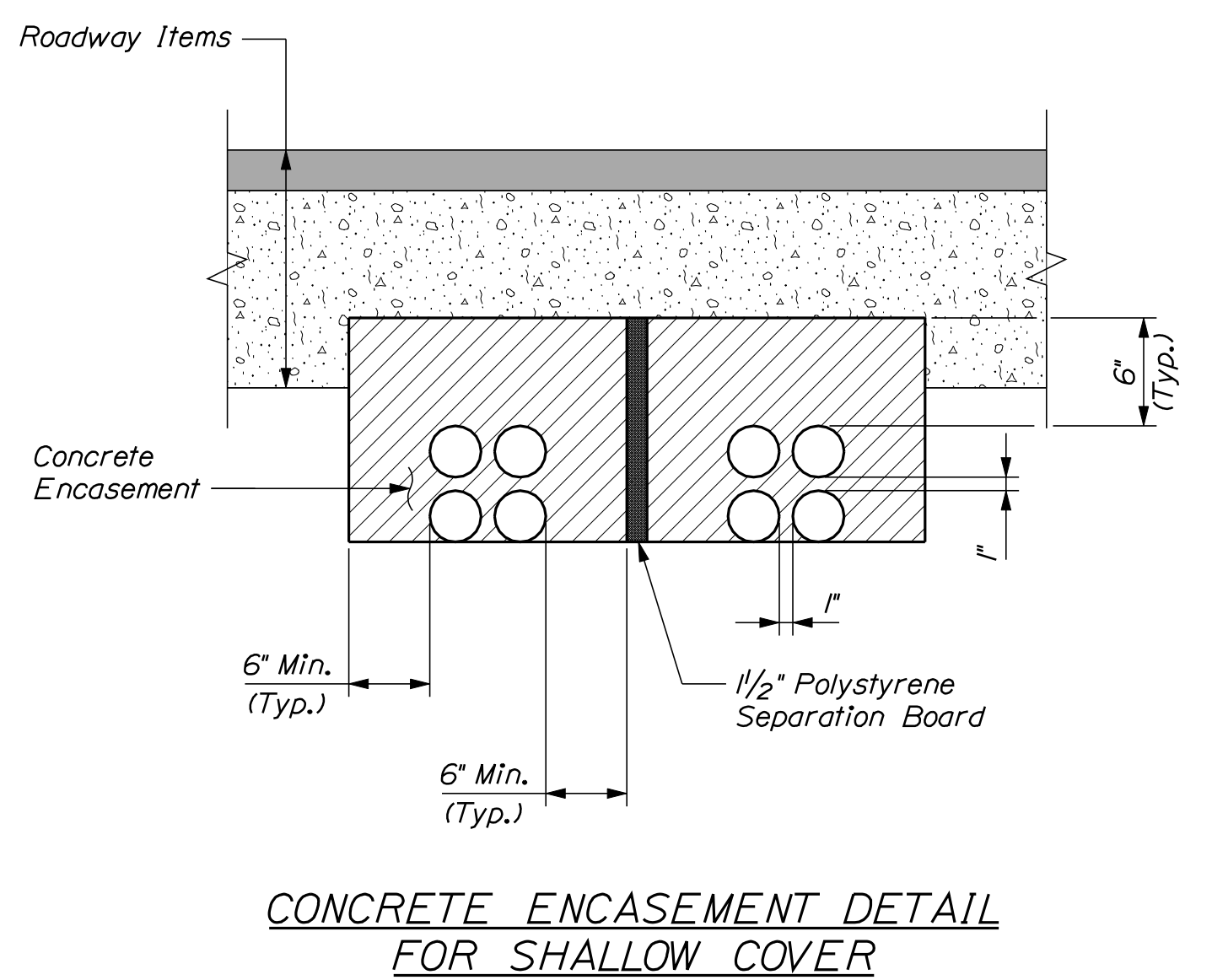
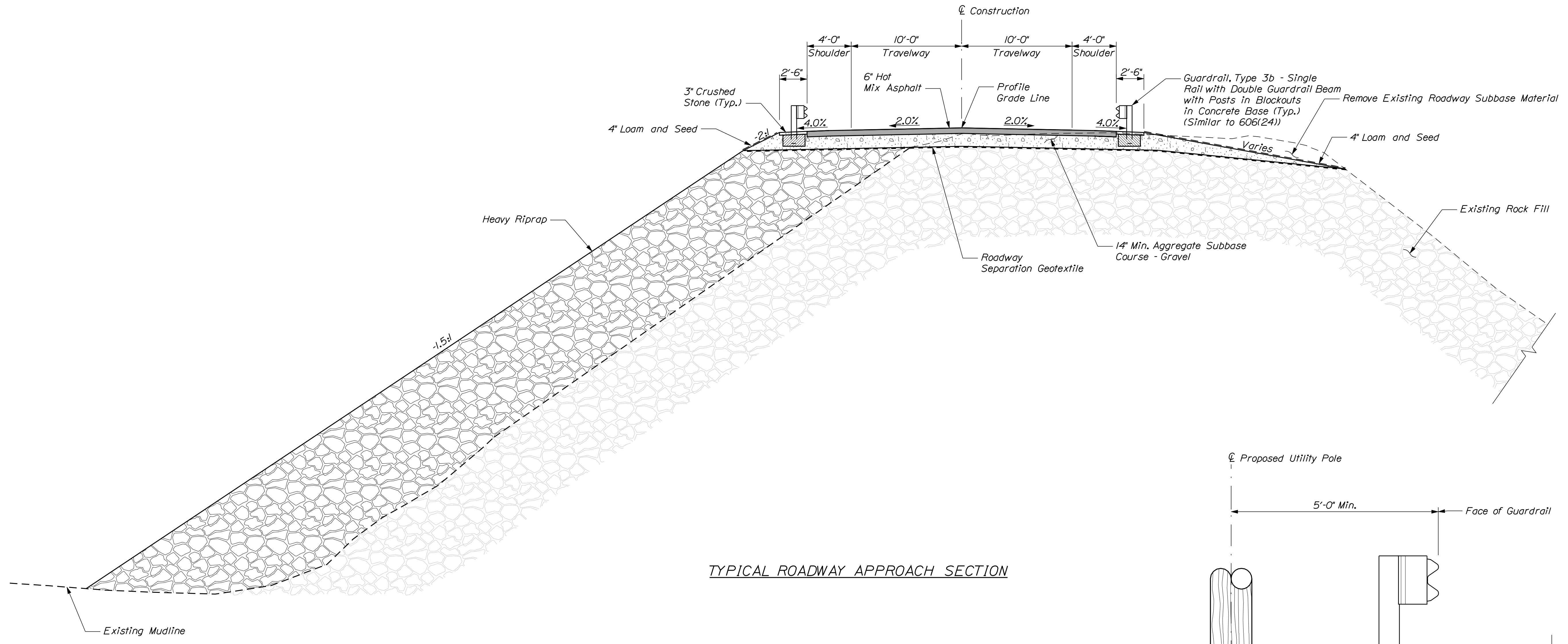
STATE OF MAINE		DEPARTMENT OF TRANSPORTATION	
BEALS ISLAND BRIDGE		MOOSABEC REACH	
JONESPORT & BEALS WASHINGTON COUNTY		PROFILE (SHEET 5 OF 5)	
SHEET NUMBER		11	
OF 17		BRIDGE NO. 6500	
WIN		022626.00	
BRIDGE PLANS		DATE	
DESIGN-DETAILED	JAW	DATE	SIGNATURE
CHECKED-REVIEWED	RSB	3/15	3/15
DESIGN-DETAILED	SMH	---	---
DESIGN-DETAILED	---	---	---
REVISIONS 1	---	---	---
REVISIONS 2	---	---	---
REVISIONS 3	---	---	---
REVISIONS 4	---	---	---
FIELD CHANGES	---	---	---

Date: 5/7/2015

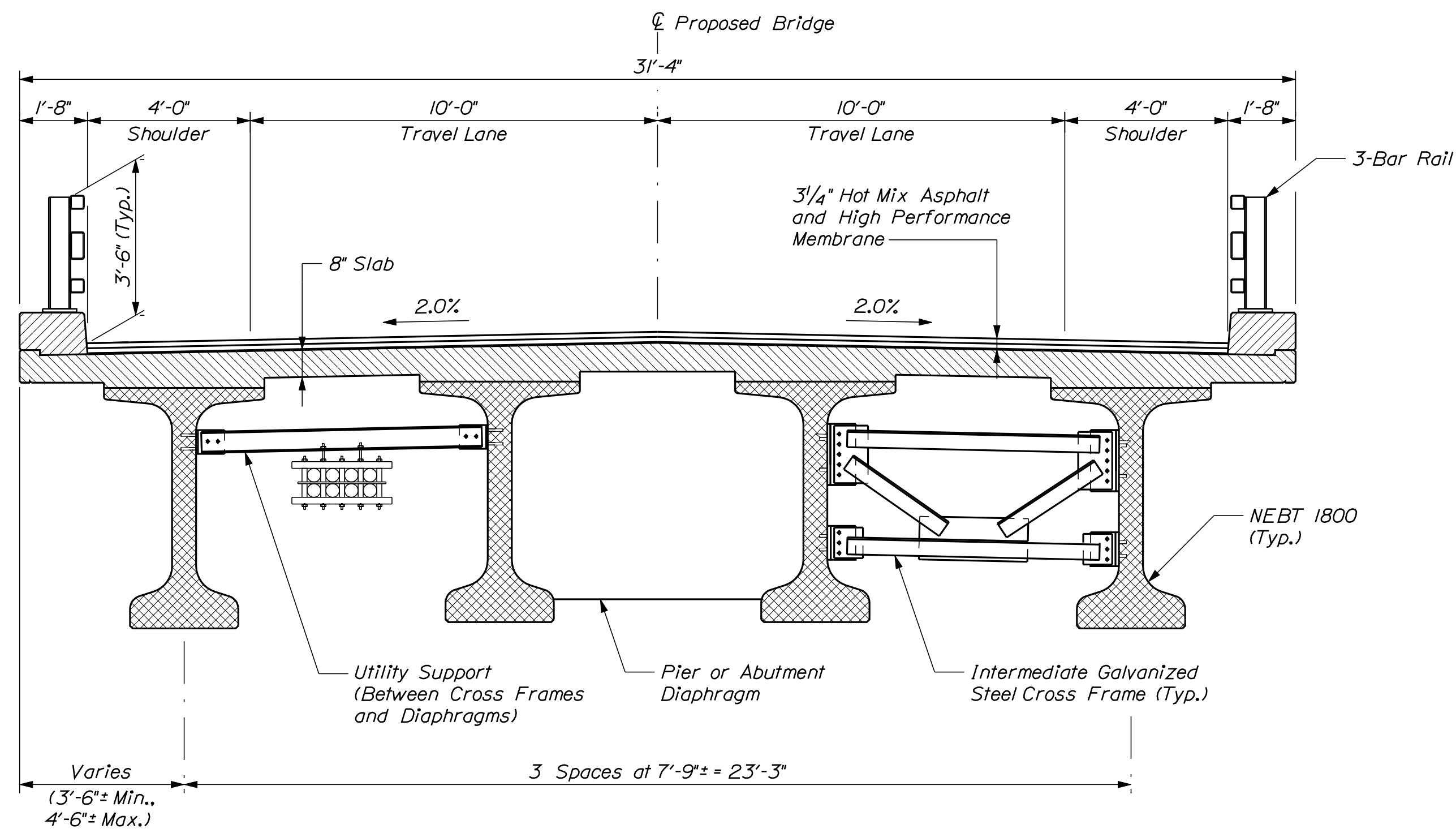
Username: kwentworth

Division: Structures

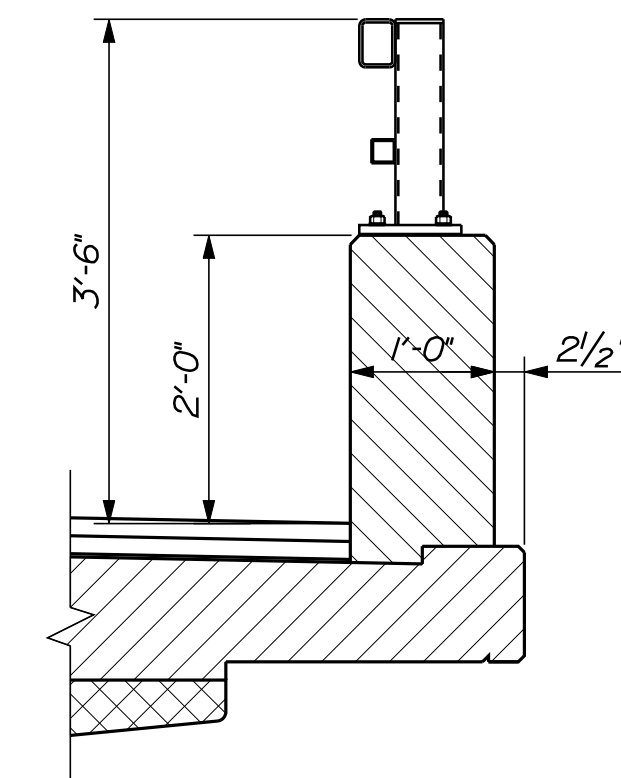
Filename: ... \012_Typical_Sections.dgn



STATE OF MAINE		DEPARTMENT OF TRANSPORTATION	
BEALS ISLAND BRIDGE		JONESPORT & BEALS WASHINGTON COUNTY	
MOOSABEC REACH		TYPICAL SECTIONS AND DETAILS	
PROJ. MANAGER	BY	DATE	BRIDGE NO. 5500
DESIGN DETAILED JAW	KDW	3/15	WIN
CHECKED/REVIEWED RSP	SMH	3/15	022626.00
DESIGN DETAILED			BRIDGE PLANS
REVISIONS 1			
REVISIONS 2			
REVISIONS 3			
REVISIONS 4			
FIELD CHANGES			
SHEET NUMBER		DATE	
12		P.E. NUMBER	
OF 17		SIGNATURE	



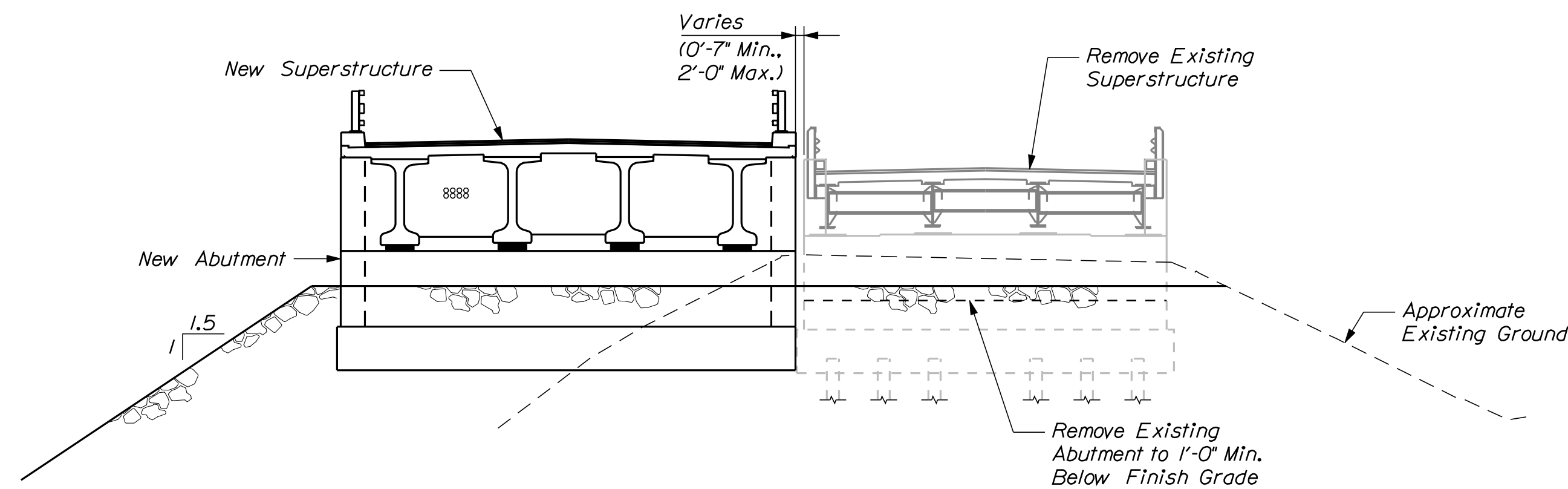
SUPERSTRUCTURE SECTION
Scale: 3/8" = 1'-0"



**MICHIGAN DOT TL-3
PARAPET TUBE RAIL
ALTERNATIVE**

NOTE

1. Alternative bridge railing shown for consideration of additional roadway width and clearances for bridge drain as required.



ABUTMENT SECTION

STATE OF MAINE		DEPARTMENT OF TRANSPORTATION	
BRIDGE NO. 5500		WIN 022626.00	
BRIDGE PLANS			
PROJ. MANAGER	DATE	BY	DATE
DESIGN DETAILED	3/15	KDW	3/15
CHECKED-REVIEWED		SMH	
DESIGN DETAILED			
DESIGN DETAILED			
REVISIONS 1			
REVISIONS 2			
REVISIONS 3			
REVISIONS 4			
FIELD CHANGES			
BEALS ISLAND BRIDGE		SIGNATURE	
MOOSABEC REACH		P.E. NUMBER	
JONESPORT & BEALS WASHINGTON COUNTY		DATE	
BRIDGE SECTIONS			
SHEET NUMBER			
15			
OF 17			