

PERFORMANCE ALERT

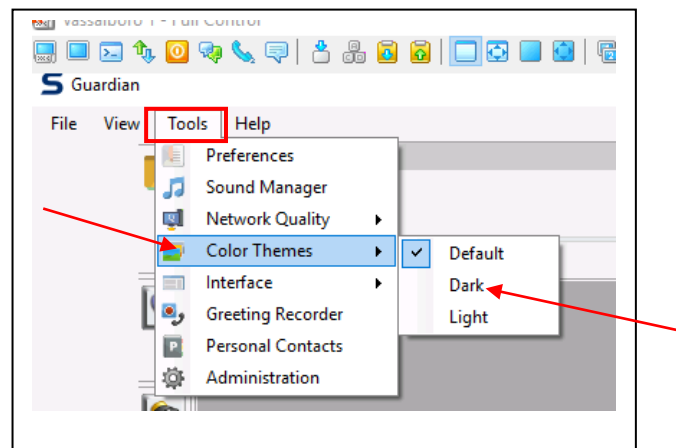


***** Solacom Guardian Display Color Themes *****

The Solacom Guardian has two background themes that allow for the adjustment of the screen from light to dark. The standard theme is a white background with colored icons. The new theme is a black background with colored icons. The calltakers can toggle between the two themes as needed.

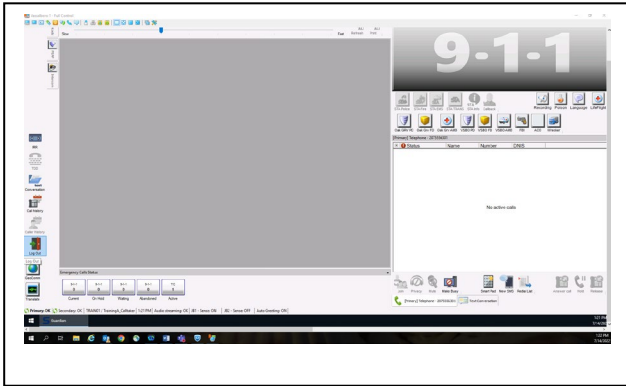
Changing the Theme background to Dark Mode:

1. Click Tools from the menu in the upper left of the Guardian screen.

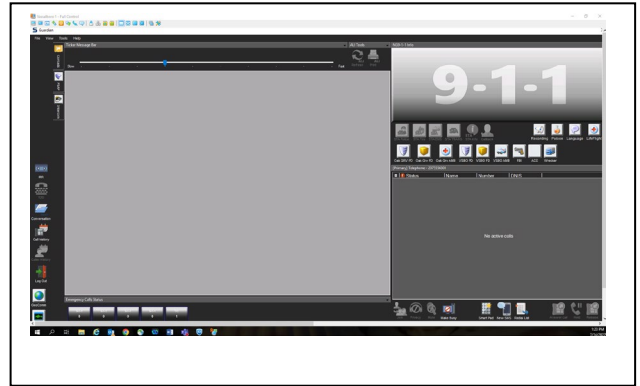


2. Click on Color Themes.
3. Select "Dark" to change to dark background.

Themes:



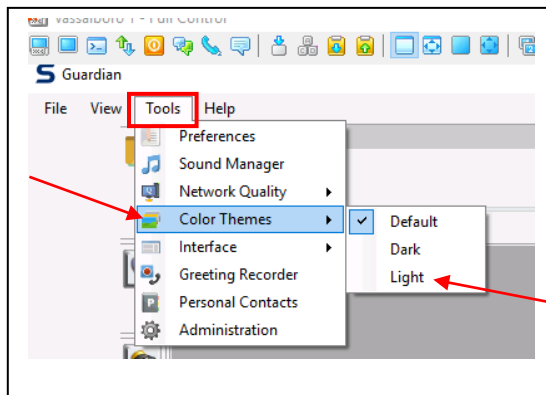
White Background Theme



Black Background Theme

Changing the Theme Background Back to Light Mode:

1. Click Tools from the menu in the upper left of the Guardian screen.



2. Click on Color Themes.

3. Select "Light" to change to white background.

NOTE: Theme Background will always default to Light Background Mode if you log out of the Solacom Guardian. You will need to select Dark Background Mode at login if that is your preference.

Please contact the Emergency 9-1-1 Center **1 (866) 984-3911 with any system issues.**