

# 2017 Annual Census of Maine's Fatal Occupational Injuries\*

A Report Provided to the US Department of Labor:  
Statistical Factors Regarding Maine's 2017 Work Related Fatalities



(\*Preliminary) June 2023

# Eighteen Maine Workers Died from Occupational/Work-Related Injuries in 2017.

The Bureau of Labor Standards of the Maine Department of Labor annually participates in the Census of Fatal Occupational Injuries (CFOI) conducted by the Bureau of Labor Statistics of the U.S. Department of Labor (US DOL). This informational report provides statistical data and charts derived from the 2017 census. It also presents key data points pertaining to Maine's fatalities.

Maine's participation in the CFOI is funded by the U.S. Bureau of Labor Statistics and the Safety Education and Training Fund (SETF) in Maine.

States collect data through conducting research, verifying occupational fatalities with supporting documentation and submitting case data to the Bureau of Labor Statistics for review and compilation.

The CFOI program limits counting occupational fatalities to those which result from injuries; the latency period of many occupational illnesses and the resulting difficulty of linking illnesses to work make it difficult to compile a complete account of all fatal illnesses in a given year.

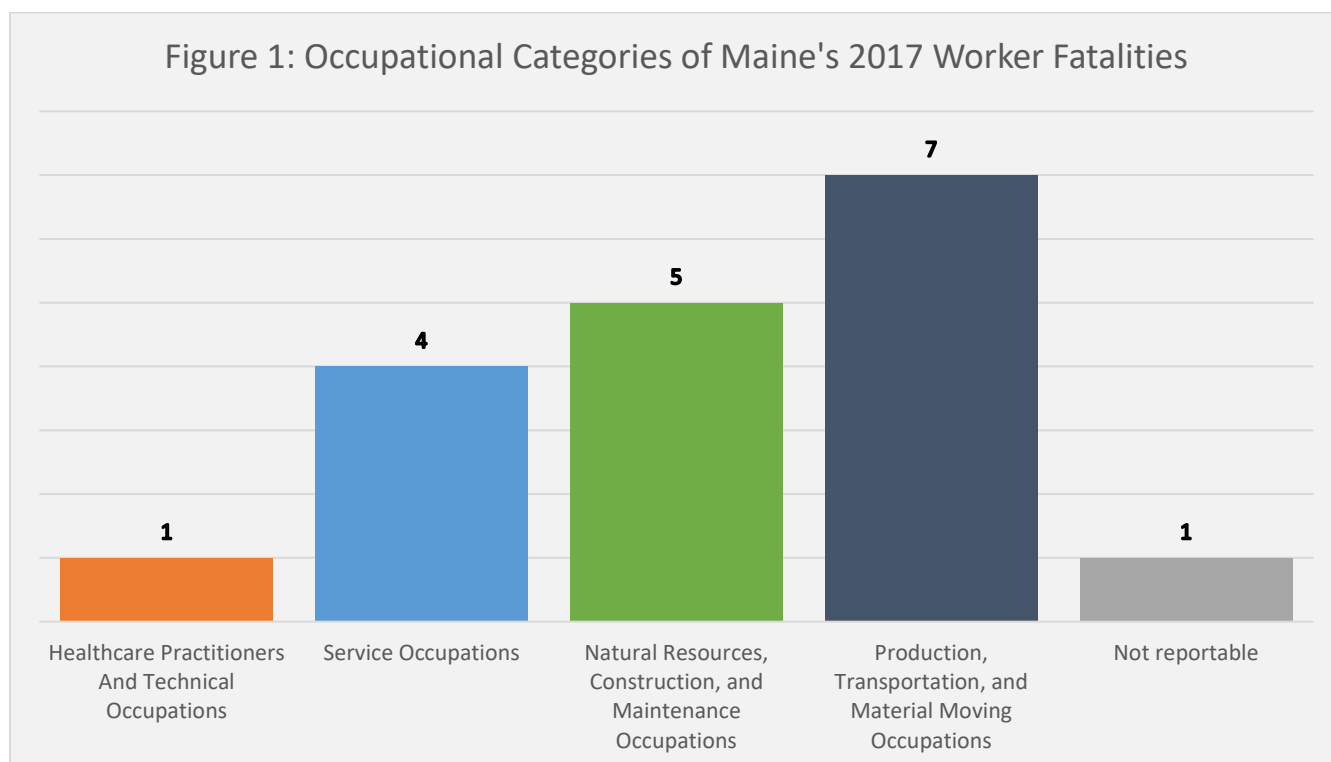
## 2008 – 2017 Occupational Fatalities

*Table 1 lists Maine's annual totals of occupational fatalities for the years 2008 to 2017. There were 194 occupational fatalities in that period, averaging approximately 19 fatalities per year. The largest annual total of fatalities during this period, 26, occurred in 2011.*

| Table 1: Maine's Occupational Fatalities from 2008 – 2017 |      |      |      |      |      |      |      |      |      |      |
|---|------|------|------|------|------|------|------|------|------|------|
| Year  | 2017 | 2016 | 2015 | 2014 | 2013 | 2012 | 2011 | 2010 | 2009 | 2008 |
| Total Fatalities  | 18   | 18   | 15   | 19   | 19   | 19   | 26   | 20   | 16   | 24   |

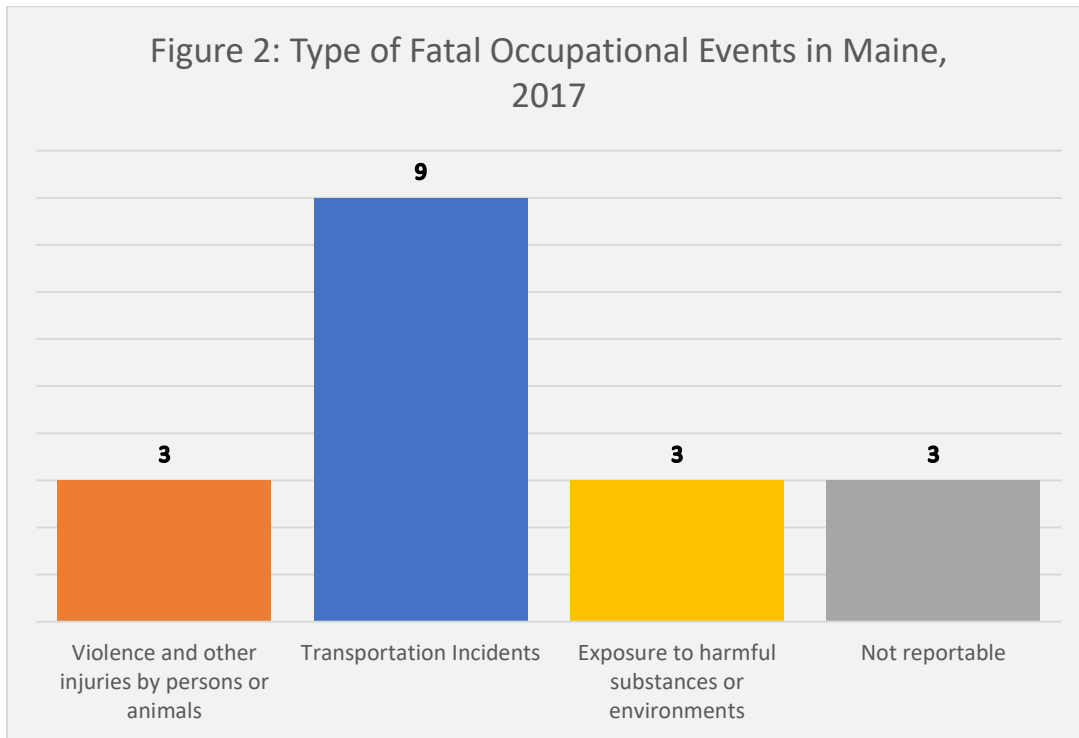
## Fatalities within Occupational Categories

Figure 1 illustrates reportable data for Maine's 2017 occupational fatalities in five occupational categories. In **Healthcare Practitioners and Technical Occupations** there was one fatality, or 6 percent of 2013's occupational fatalities. **Service Occupations** account for four fatalities (22%) and **Natural Resources, Construction, and Maintenance Occupations** had five (28%). The largest group was **Production, Transportation, and Material Moving Occupations** with seven fatalities (39%), six of which were more specifically in **Transportation and Material Moving**. The occupation of the one remaining fatality was not reportable.



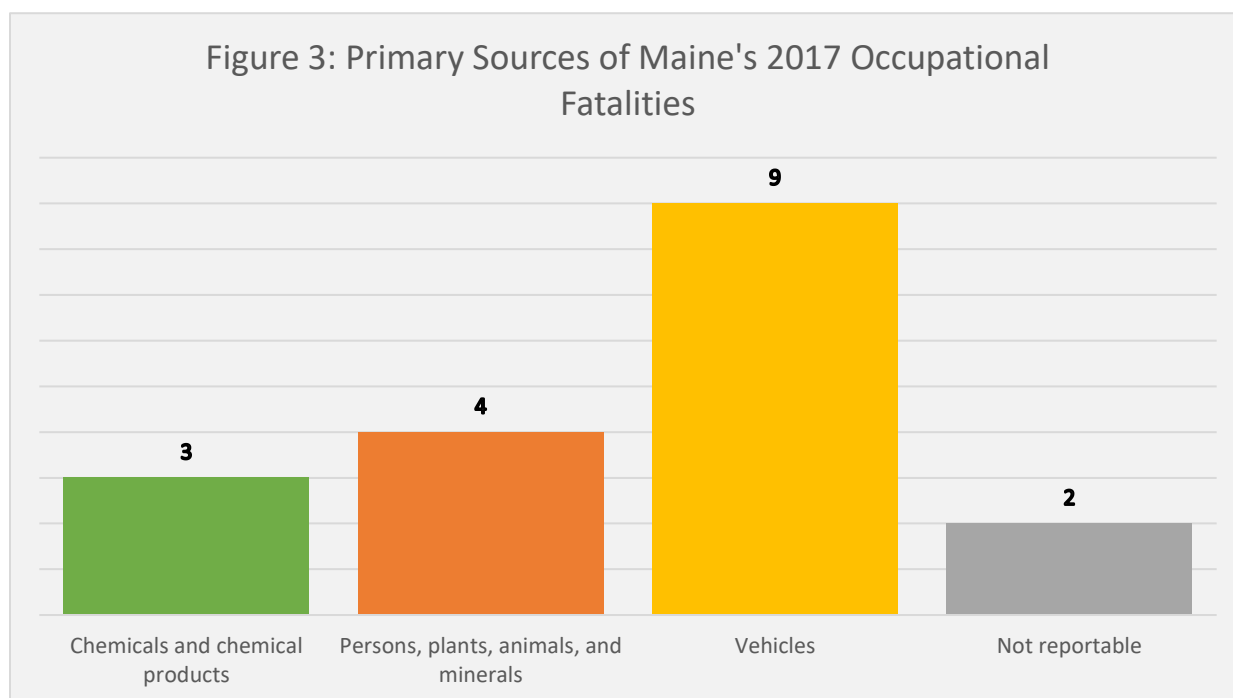
## Types of Fatal Events

Figure 2 shows the types of fatal events that happened in Maine in 2017. **Violence and other injuries by persons or animals** and **Exposure to harmful substances or environments** both accounted for three fatalities, or 17%. **Transportation incidents** made up nine fatalities, or 50% of the total. The remaining three were not reportable.



## Primary Sources Causing Fatalities

Figure 3 provides reportable data for three primary sources that contributed to Maine's 2017 occupational fatalities. **Vehicles** were involved in nine fatalities, 50% of the total. **Persons, Plants, Animals and Minerals** were involved in four fatalities (22%) and **Chemicals and Chemical Products** were involved in three (17%). Two more sources were not reportable.



## Secondary Sources

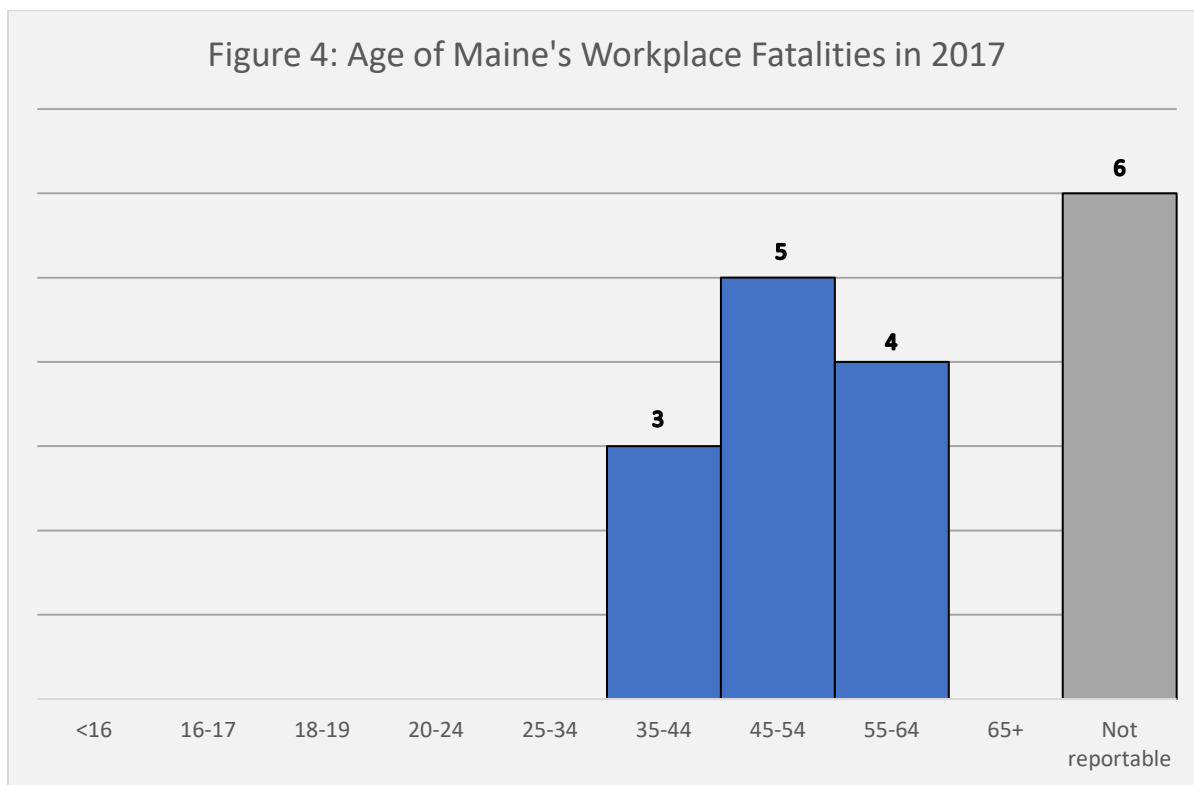
Not every case is assigned a secondary source. In 2017's fatalities, one had **Parts and Materials** as a secondary source, four had **Tools, Instruments, and Equipment**, and six had **Vehicles**.



## Age Categories

Figure 4 provides reportable data regarding age categories for Maine's 2017 occupational fatalities. All of those reportable were in the range of 35-64. Three of these were 35-44 (17%), five were 45-54 (28%), and another four were 55-64 (22%). One third of cases did not have a reportable age.

On the national scale, there were 5,147 fatalities. 18% were in the 35-44 age range, 21% in 45-54, and 22% in 55-64. Maine's percentage was higher for the 45-54 group, but similar for the others.



## Other Key Points:

- ✓ Of the nine incidents in which a vehicle was the primary source, a truck was the primary source for six of them.
- ✓ All of 2017's fatalities were white men.
- ✓ Five fatalities (28%) were self-employed. This is higher than the national rate, which was approximately 21%.
- ✓ Two fatalities occurred in places for recreation and sport.

## Sources:

Data for this report was extracted from the Census of Fatal Occupational Injuries (CFOI), Maine Department of Labor, 2017, or from the US Bureau of Labor Statistics' One-Screen Data Search tool at <https://data.bls.gov/PDQWeb/fw>.

CFOI is a federal program that, in most cases, is administered by the states.

For more information on fatal occupational injuries, contact  
Blake Dauphinais, Statistician III  
207-623-7904  
TTY users call Maine Relay 711.

Research and Statistics Unit, Division of Technical Services  
Bureau of Labor Standards  
Maine State Department of Labor

Maine Department of Labor provides equal opportunity in employment and programs.  
Auxiliary aids and services are available to individuals with disabilities upon request.