

2014 Annual Census of Maine's Fatal Occupational Injuries*

A Report Provided to the US Department of Labor:
Statistical Factors Regarding Maine's 2014 Work Related Fatalities



(*Preliminary) June 2023

Nineteen Maine Workers Died from Occupational/Work-Related Injuries in 2014.

The Bureau of Labor Standards of the Maine Department of Labor annually participates in the Census of Fatal Occupational Injuries (CFOI) conducted by the Bureau of Labor Statistics of the U.S. Department of Labor (US DOL). This informational report provides statistical data and charts derived from the 2014 census. It also presents key data points pertaining to Maine's fatalities.

Maine's participation in the CFOI is funded by the U.S. Bureau of Labor Statistics and the Safety Education and Training Fund (SETF) in Maine.

States collect data through conducting research, verifying occupational fatalities with supporting documentation and submitting case data to the Bureau of Labor Statistics for review and compilation.

The CFOI program limits counting occupational fatalities to those which result from injuries; the latency period of many occupational illnesses and the resulting difficulty of linking illnesses to work make it difficult to compile a complete account of all fatal illnesses in a given year.

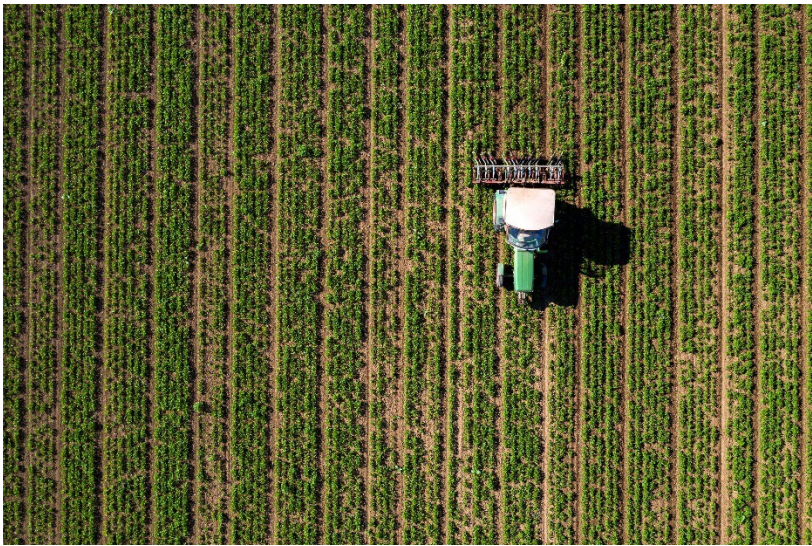
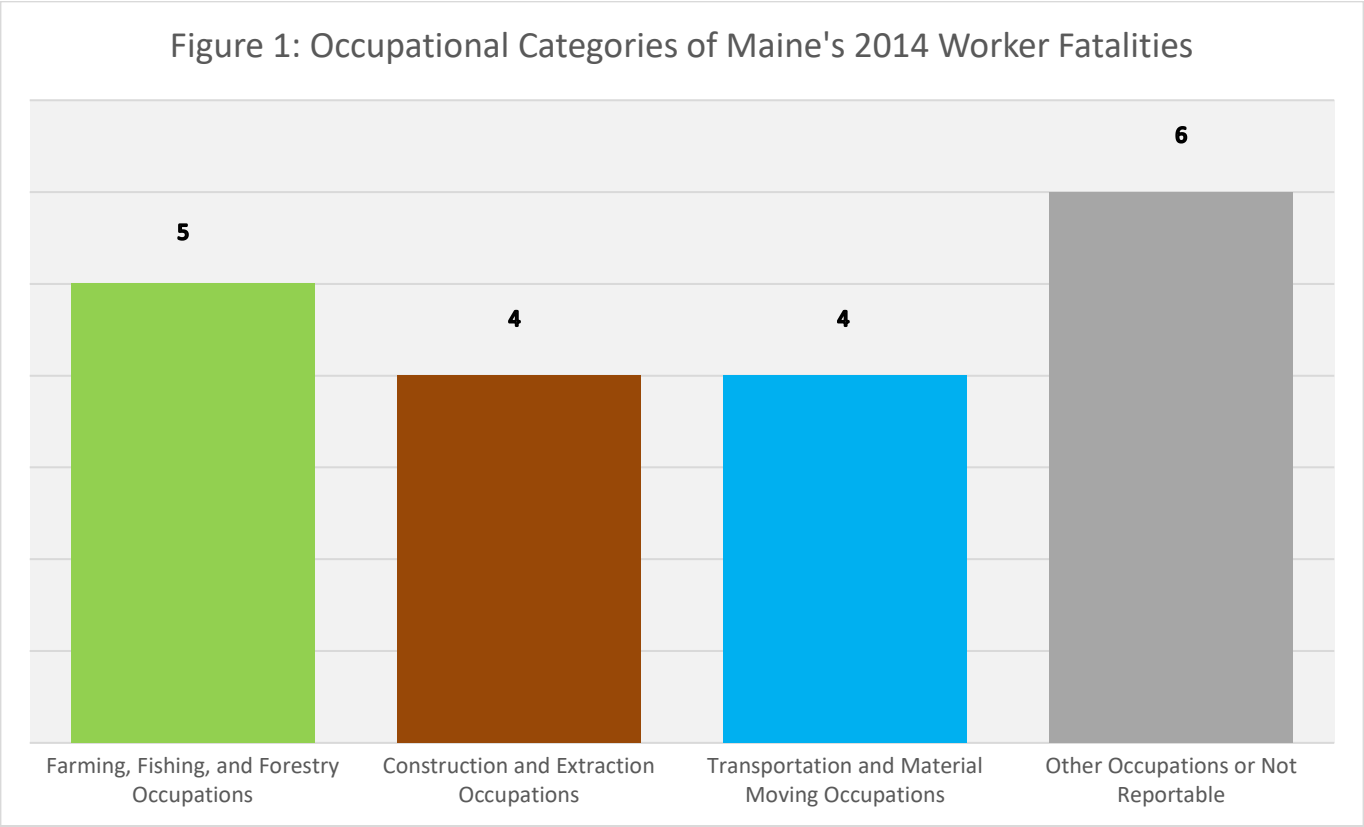
2005 – 2014 Occupational Fatalities

Table 1 lists Maine's annual totals of occupational fatalities for the years 2005 to 2014. There were 199 occupational fatalities in that period, averaging just short of 20 fatalities per year. The largest annual total of fatalities during this period, 26, occurred in 2011.

Table 1: Maine's Occupational Fatalities from 2005 – 2014										
Year	2014	2013	2012	2011	2010	2009	2008	2007	2006	2005
Total Fatalities	19	19	19	26	20	16	24	21	20	15

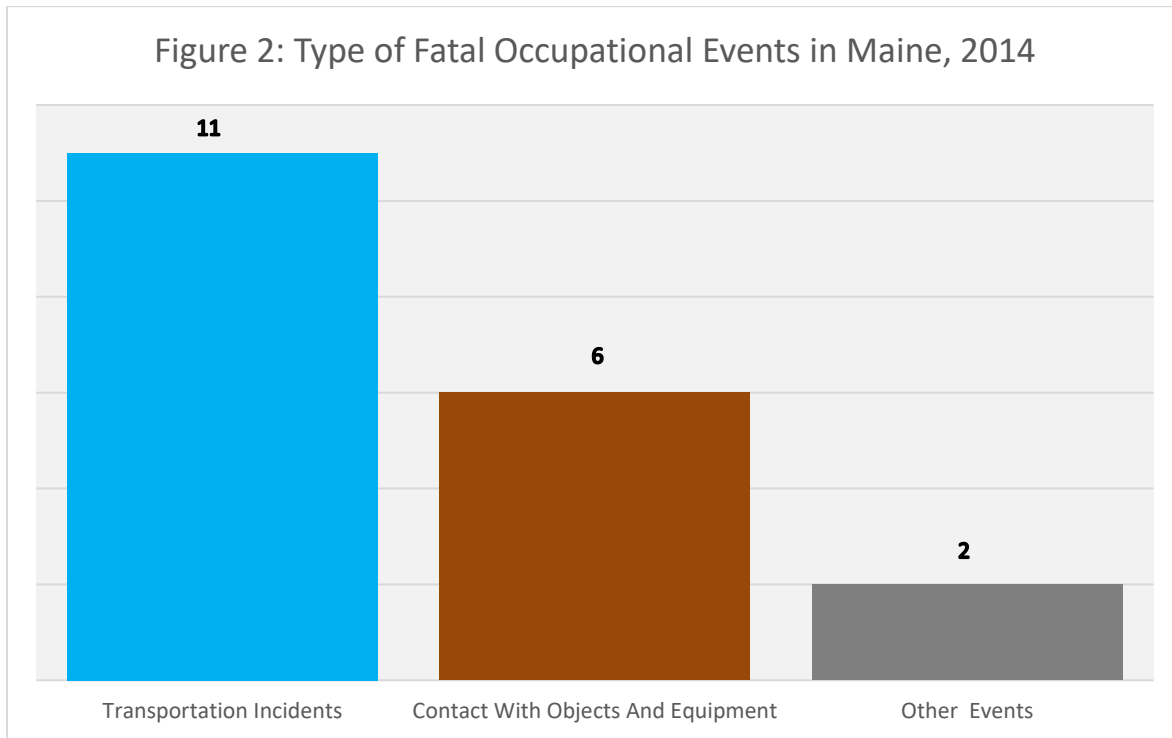
Fatalities within Occupational Categories

Figure 1 illustrates reportable data for Maine’s 2014 occupational fatalities in three occupational categories. In **Farming, Fishing, and Forestry Occupations**, there were five fatalities, or 26% of 2014’s total. **Construction and Extraction** and **Transportation and Material Moving** occupations each incurred four fatalities, each accounting for 21%. Six additional fatalities occurred within a diverse range of occupational categories or were not reportable.



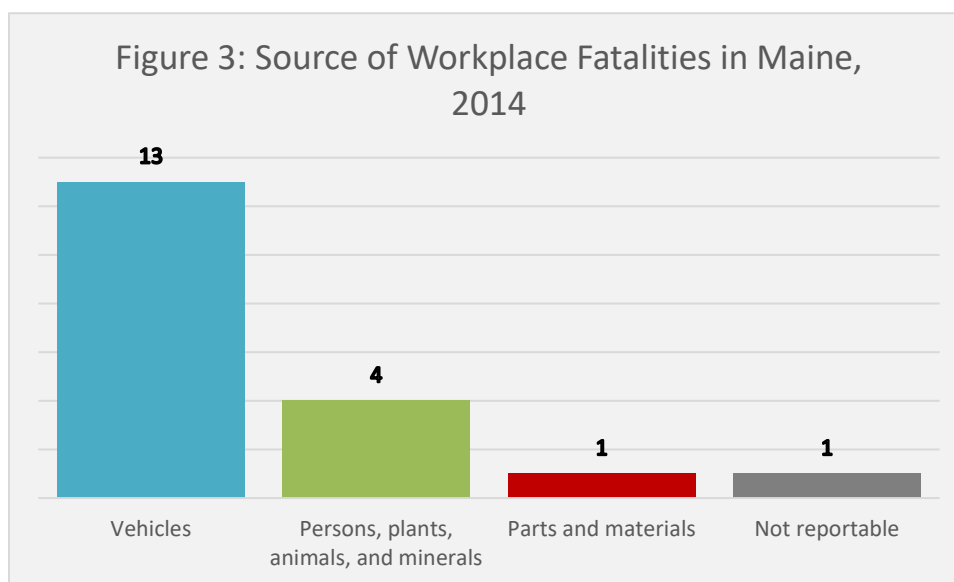
Types of Fatal Events

Figure 2 provides reportable data from Maine's 2014 types of fatal events. **Transportation Incidents** accounted for eleven fatalities, 58% of all 2014 occupational fatalities. **Contact with Objects and Equipment** accounted for six fatalities (32%), and the remaining two fatalities were in other categories which were **Not Reportable**.



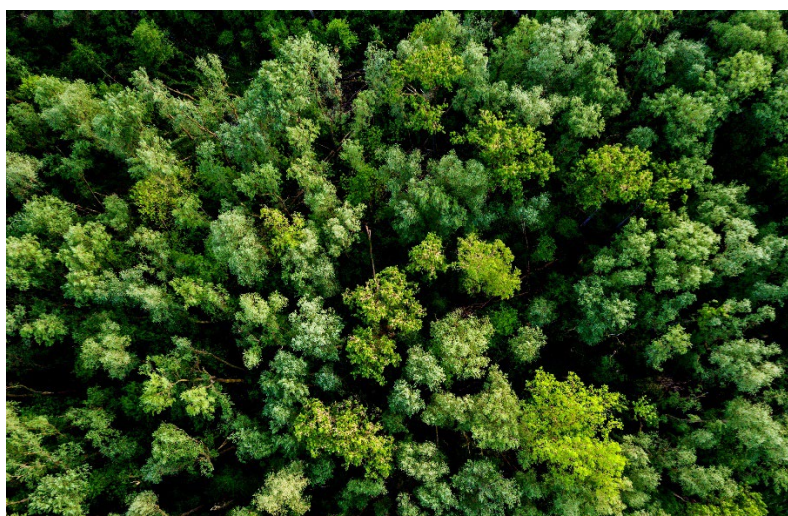
Primary Sources Causing Fatalities

Figure 3 provides reportable data for three primary sources that contributed to Maine's 2014 occupational fatalities. The majority of fatalities were caused by **vehicles**, 13 of 19 or 68%. **Persons, Plants, Animals and Minerals** were involved in four fatalities (21%), and **Parts and Materials** were involved in one (5%). Only one primary source was not reportable.



Secondary Sources

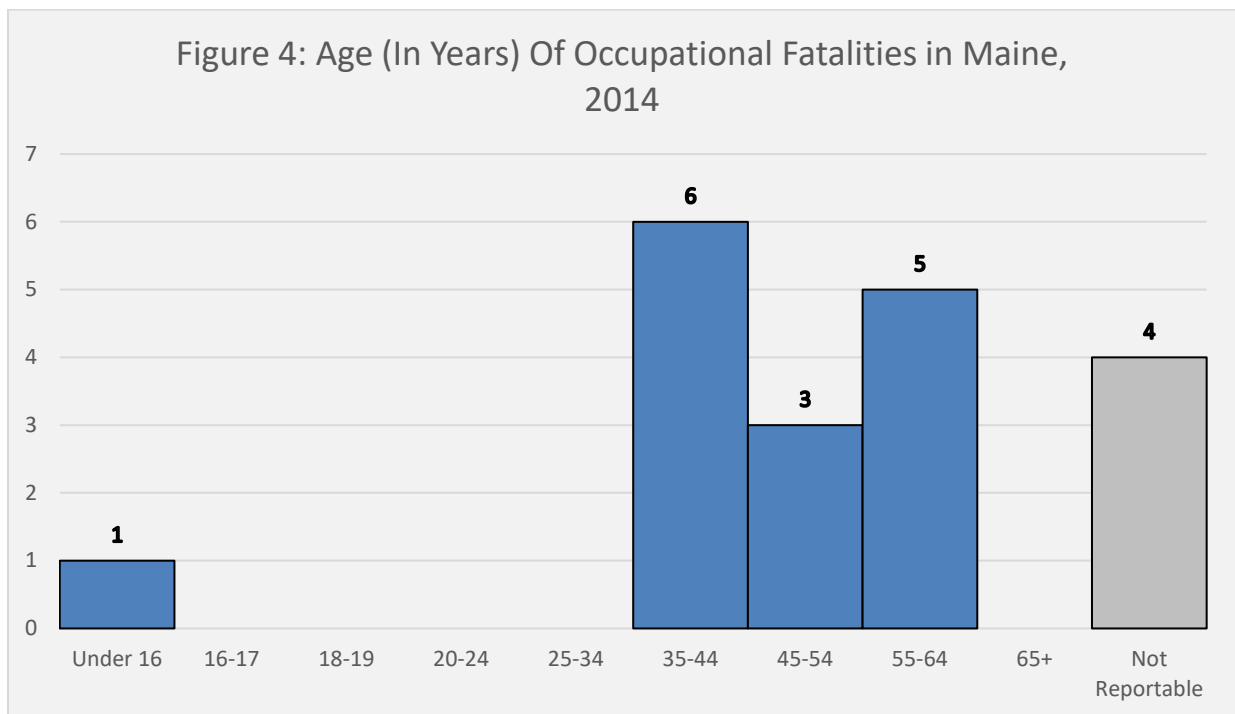
The only group to appear as a secondary source that was reportable was **Persons, plants, animals, and minerals**. This occurred in four cases, three of which were **Trees, logs, and limbs**. Many events do not get assigned a secondary source.



Age Categories

Figure 4 provides reportable data regarding age categories for Maine's 2014 occupational fatalities. There was one fatality under sixteen years old, and all others for which the age was reportable were between 35 and 64. The 35-44 age group had a plurality of six fatalities (32%), and then 45-54 had three (16%), and 55-64 had five (26%). For the remaining four fatalities, the decedent's age was not reportable.

The national data looked fairly different for this year. The most common age bracket was 45-54, which accounted for 24% of fatalities. 55-64 followed, with 21%. The one fatality that Maine saw under age 16 is significant, as only eight were recorded in this group nationally.



Other Key Points:

- ✓ Six of the fatalities in 2014 involved workers who were self-employed.
- ✓ Eighteen of the nineteen fatalities were men (the one remaining was not reportable).
- ✓ Seventeen fatalities were white, and the remaining two were of other races. Both of these two died in transportation incidents.
- ✓ 26% of Maine's fatalities in 2014 were workers in **Farming, fishing, and forestry occupations**. Nationally this rate was only 5%.
- ✓ One fatality occurred on a farm.

Sources:

Data for this report was extracted from the Census of Fatal Occupational Injuries (CFOI), Maine Department of Labor, 2014, or from the US Bureau of Labor Statistics' One-Screen Data Search tool at <https://data.bls.gov/PDQWeb/fw>. CFOI is a federal program that, in most cases, is administered by the states.

For more information on fatal occupational injuries, contact
Blake Dauphinais, Statistician III
207-623-7904
TTY users call Maine Relay 711.

Research and Statistics Unit, Division of Technical Services
Bureau of Labor Standards
Maine State Department of Labor

Maine Department of Labor provides equal opportunity in employment and programs.
Auxiliary aids and services are available to individuals with disabilities upon request.