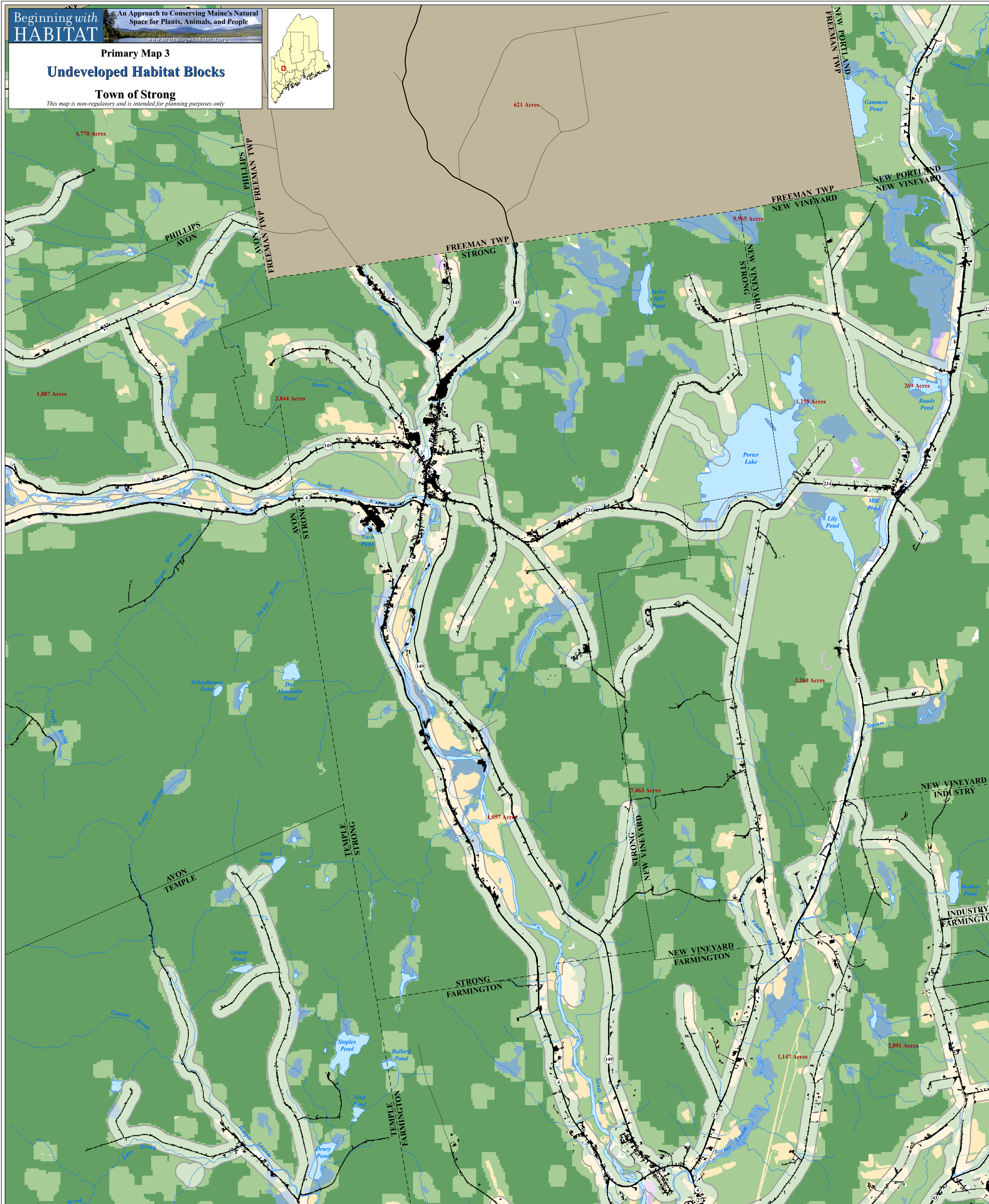
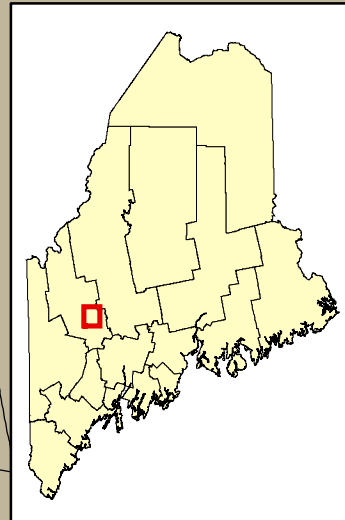


Primary Map 3
Undeveloped Habitat Blocks

Town of Strong

This map is non-regulatory and is intended for planning purposes only.



LEGEND

The purpose of this map is to highlight those areas that are likely to provide the best opportunities locally to conserve large relatively undisturbed blocks of habitat. By slowing the further fragmentation of these areas, towns, and land trusts, can effectively keep locally common species common and maintain traditional outdoor recreation opportunities for future generations. By depicting a 500 foot buffer around improved roads and areas identified as developed (representing the general extent of direct and indirect habitat disturbance) this map highlights large areas of relatively intact habitat. Blocks ≥ 100 acres are labeled with their size in acres. Local knowledge of the condition and use of roads should be used to more accurately evaluate habitat block size and extent of disturbance.

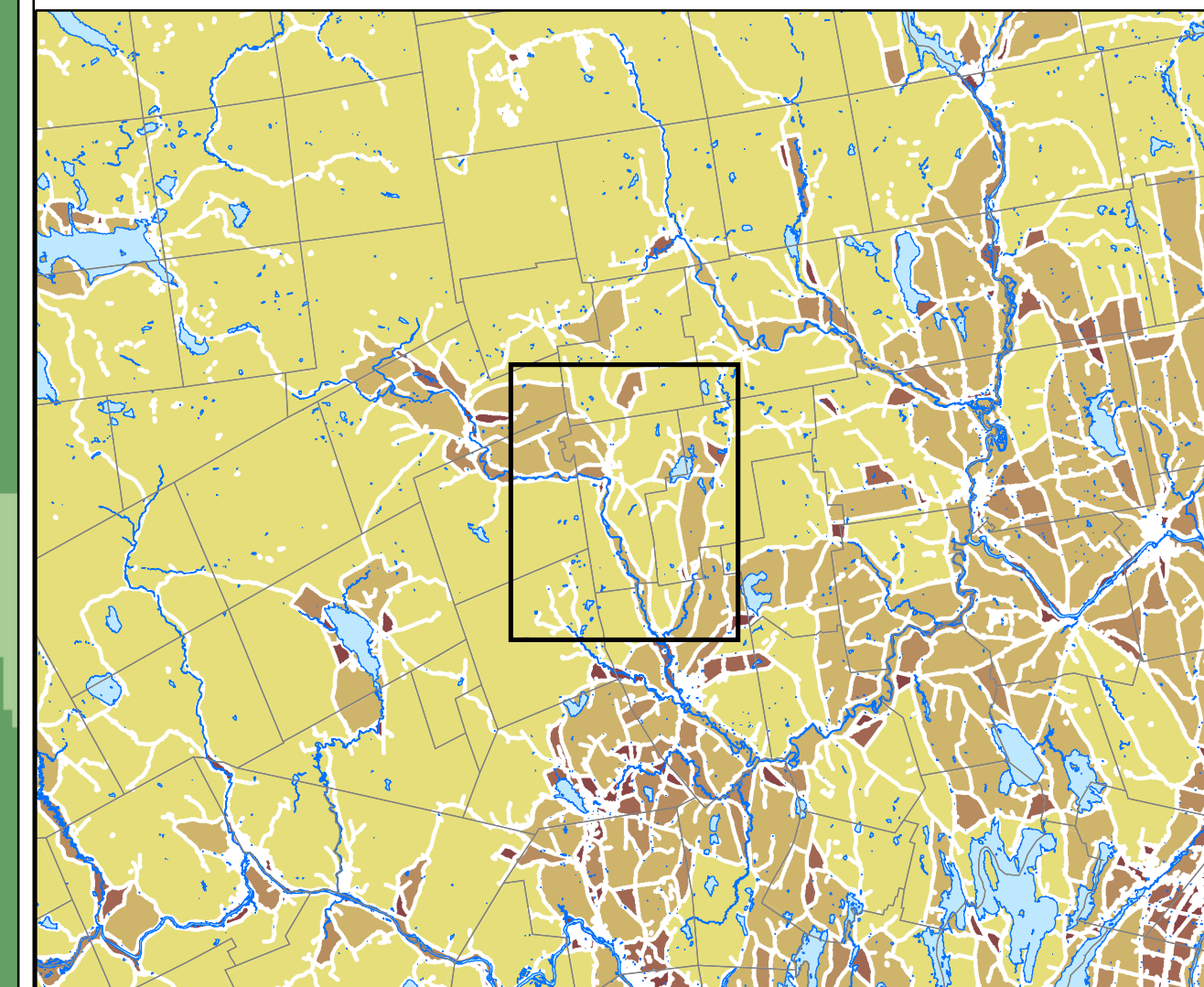
Within the Undeveloped Habitat Blocks, the general landuse/landcover is shown (refer to legend). Areas shown as being forested are likely to contain multiple stand types, stand ages, and conditions.

- Organized Township Boundary
- Unorganized Township (Beginning with Habitat does not provide data for unorganized townships)
- Developed- Area of impervious surfaces including building and roads
- Streams and Brooks
- Ocean, Lakes, Ponds, and Rivers

- HABITAT BLOCKS**
- Undeveloped Habitat Block
These habitat blocks will contain several different habitat types (see habitat types listed below). Acreage within each block is listed on the map with red text.
 - Development Buffer (white transparency)
500 foot buffer of roads

- LANDCOVER CATEGORIES WITHIN UNDEVELOPED HABITAT BLOCKS**
- Agricultural/Grass/Shrub Lands
Landcover types where human intervention maintains an open landscape dominated by grasses, row crops, or lowbush blueberry.
 - Wetlands
Wetlands as identified in the 1980's by the National Wetland Inventory of the U.S. Fish & Wildlife Service. Wetlands delineated by aerial photo interpretation and may be under represented.
 - Forest Area < 300 feet from other (non-forested) habitat OR < 500 acres
This category is likely to contain a greater edge to interior habitat ratio.
 - Forest Area > 300 feet from other (non-forested) habitat AND ≥ 500 acres
This category is likely to support the most interior habitat.
 - Development (white solid)
Small areas that are not covered by the above 'Developed' layer.
 - Other
Exposed rock/talus, alpine tundra; may include industrial gravel pits.

REGIONAL Undeveloped Block Sizes



- Development Area Buffer
 - 0 - 250 acres
 - 250-500 acres
 - 500-1,000 acres
 - 1,000-5,000 acres
 - > 5,000 acres
- Inset Scale - 1:500,000
-

Data Sources

DATA SOURCE INFORMATION
(note: italicized file names can be downloaded from Maine Office of GIS)

TOWNSHIP BOUNDARIES
Maine Office of GIS (2006); *metwp24*

ROADS
Maine Office of GIS, Maine Department of Transportation (2005); *medotpub*

HYDROLOGY
Maine Office of GIS, U.S. Geological Survey (2004); *hyd24*

DEVELOPED
Maine Office of GIS, Maine Department of Environmental Protection (contact agency for this multiple agency collaboration) (2005); *imperv*

UNDEVELOPED HABITAT BLOCKS, DEVELOPMENT BUFFER
Maine Dept. of Inland Fisheries & Wildlife, Maine Natural Areas Program

LANDCOVER
Maine Office of GIS, Maine Department of Environmental Protection (contact agency for this multiple agency collaboration) (2006); *melcd*

DATA SOURCE CONTACT INFORMATION
Maine Office of GIS- <http://apollo.ogis.state.me.us/catalog>
Maine Natural Areas Program- <http://www.mainenaturalareas.org>
Maine Dept. of Inland Fisheries & Wildlife- <http://mefishwildlife.com>
Maine Department of Transportation- <http://www.maine.gov/mdot/>
Maine Department of Environmental Protection- <http://www.maine.gov/dep/>

DIGITAL DATA REQUEST
To request digital data for a town or organization, visit our website.
http://www.beginningwithhabitat.org/the_maps/gis_data_request.html