

CANTON LAKE
(Anasagunticook Lake)
Canton & Hartford Twps., Oxford Co.
U.S.G.S. Canton, Me. (7.5')

Fishes

Brown trout
Rainbow smelt
Smallmouth bass
White perch
Yellow perch
Chain pickerel

Minnows
Golden shiner
White Sucker
Hornpout (bullhead)
Pumpkinseed sunfish

Physical Characteristics

Area - 588 acres

Maximum depth - 46 feet

Temperatures:

Surface - 79°F

45 feet - 54°F

Principal fisheries: Brown trout, smallmouth bass, chain pickerel

Given its location, Canton Lake is a reasonably large body of water with a mean depth of 23 feet, and virtually no offshore structure. This water thermally stratifies during the summer, and a limited band of cool, oxygenated water develops that is suitable for salmonids. However, salmonids within this zone face strong competition for food and space by the abundant white perch and white sucker populations. A fair smallmouth bass fishery is present, but the lack of off-shore structure limits their numbers.

In the 1950's this water was managed for salmon, and occasionally a few nice ones were taken. However, severe competition from white perch and suckers limited their management. Splake, a cross between a female lake trout and a male brook trout, have also been stocked historically, but this stocking was discontinued in 2006 due to poor performance related to summer water quality limitations. Presently brown trout are being stocked to provide a "put-and-grow" fishery. Two tributaries, Thompson and Sparrow Brooks, provide some natural reproduction of both brown trout and brook trout, but an annual stocking of brown trout is required to meet angler demands.

Over the years, operation and safety issues of the privately owned dam created lake draw-downs that adversely impacted lake fisheries. The Town of Canton took over ownership of the dam property and successfully rebuilt the dam in 2012. Fishery management concerns should be alleviated under a more stable lake water level management plan.

As part of the dam reconstruction, the MDIFW partnered with the Town to construct a safer public boat launching site with ample parking. The new public launch is located on the outlet just upstream of the dam. Outlet depths typically exceed 3 feet in the center channel at normal lake water levels; however, anglers need to be vigilant for a few scattered boulders and other potential obstructions when navigating the channel.

Surveyed - June-October, 1937

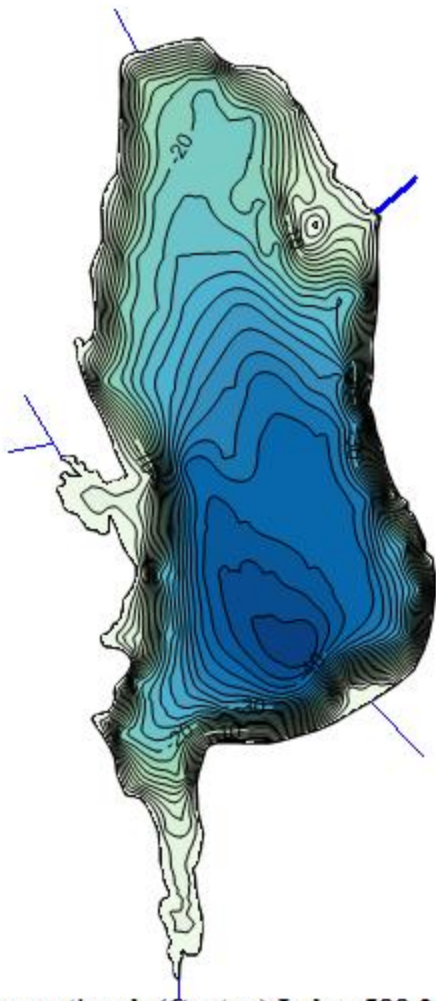
(Revised - 1953, 1960, 1970, 1996, 2014)

Maine Department of Inland Fisheries and Wildlife

Funded in part by the Federal Aid in Restoration Act under

Federal Project F-28-P

L3604A



**Anasagunticook (Canton) Lake, 588.2 acres
Canton, Oxford County, Maine**

