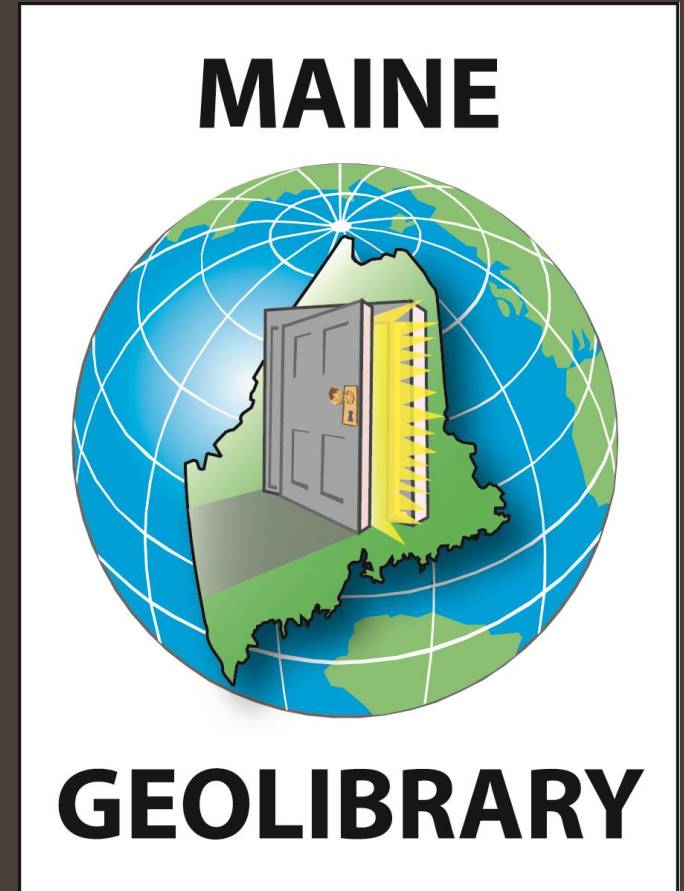


Happy Spring!

Executive Director's Report

Wednesday, March 20, 2024





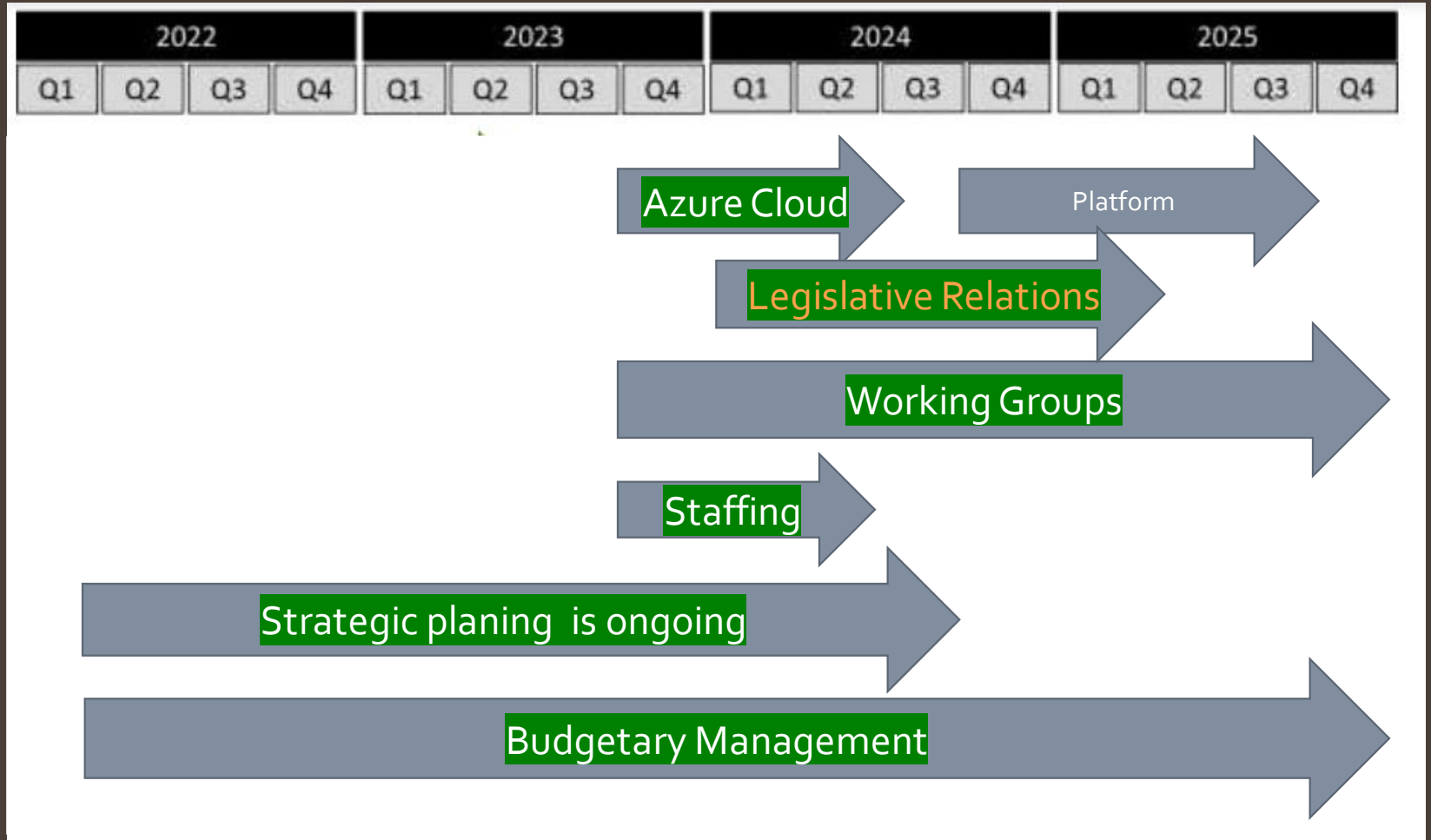
Monthly Status Update 03/24



Instead of going through items and then having discussion, please interrupt for questions and comments. You can use the "raise hand" feature on Teams or just shout right out!

1. Joint Funding Agreement (JFA) with the USGS for the Western Mountains LiDAR is signed.
2. New Positions are posted and hiring process has begun.
4. Azure Cloud Project is live!
5. RFP is in Purchasing and not yet posted.
6. Board Channel in Teams is live!
Please accept invitations and allow download.
7. Data Inventory process has begun.

Strategic Planning

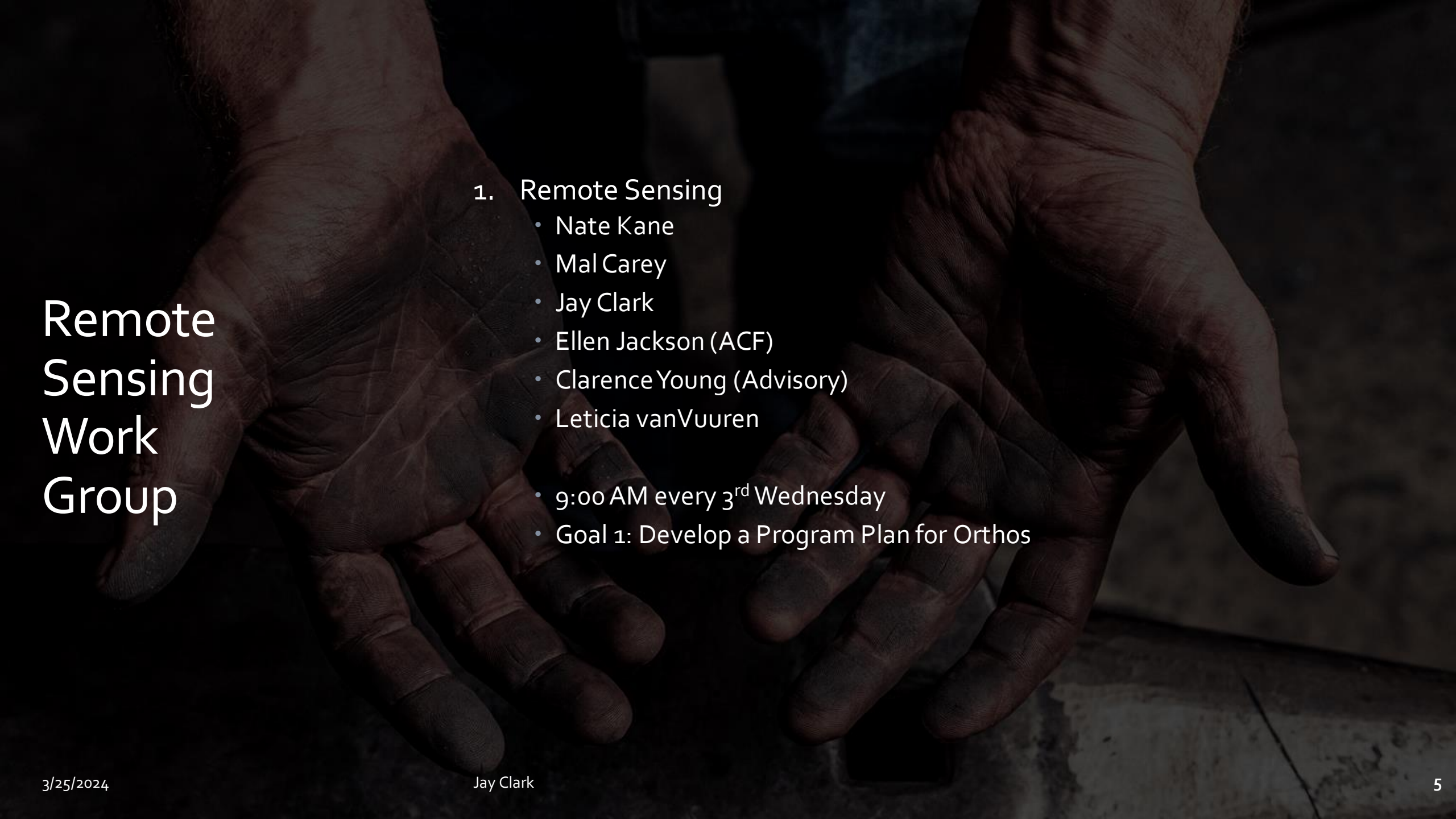


Calendar

Meetings + Planning

Month	Da	Time	Description
January	17	10AM - 4PM	Annual Formative Meeting
February	21	10AM-12PM	RegularMeeting
March	20	10AM-11AM	RegularMeeting
April	17	10AM-11AM	RegularMeeting
May	15	10AM-11AM	RegularMeeting
June	19	10AM -4PM	Day Long Planning Meeting
July	17	10AM-11AM	Only if Required
August	21	10AM-11AM	Only if Required
September	18	10AM-11AM	RegularMeeting
October	16	10AM-11AM	RegularMeeting
November	20	10AM-4PM	Year End Review Meeting
December	18	10AM-11AM	RegularMeeting

Planning for 2026 - 2027 Biennial Cycle	In Progress	BrianG	ClarenceY & JayC	1/1/2024	6/30/2024
February Board Meeting	Complete	LeticiaV	JayC	2/1/2024	2/21/2024
Data Store Inventory	In Progress	ClarneceY	JayC	3/1/2024	4/1/2024
March Board Meeting	In Progress	LeticiaV	JayC	March Meeting	
Feedback from Custodians	Not Started	ClarneceY	EmilyP	3/1/2024	4/1/2024
Prepare Content Report	In Progress	JayC	JayC	4/1/2024	4/15/2024

A close-up photograph of two hands, one larger and one smaller, holding a smartphone. The hands are positioned as if presenting the device. The background is dark and out of focus.

Remote Sensing Work Group

1. Remote Sensing

- Nate Kane
- Mal Carey
- Jay Clark
- Ellen Jackson (ACF)
- Clarence Young (Advisory)
- Leticia vanVuuren

- 9:00 AM every 3rd Wednesday
- Goal 1: Develop a Program Plan for Orthos

Derivative Products (Parcels) Work Group

Parcels

- Greg Copeland
- Aaron Weston
- Mal Carey
- Jay Clark
- Jon Giles (Advisory)
- Emily Pettit (Advisory)
- Leticia vanVuuren

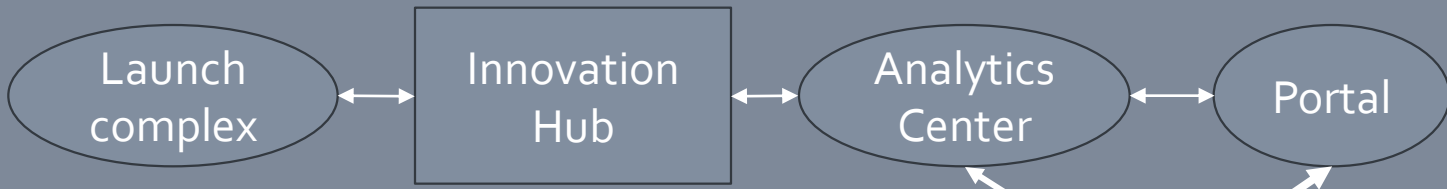
11:00 AM Every 3rd Wednesday

Goal 1: Program Plan for Parcel Development

Program Plan



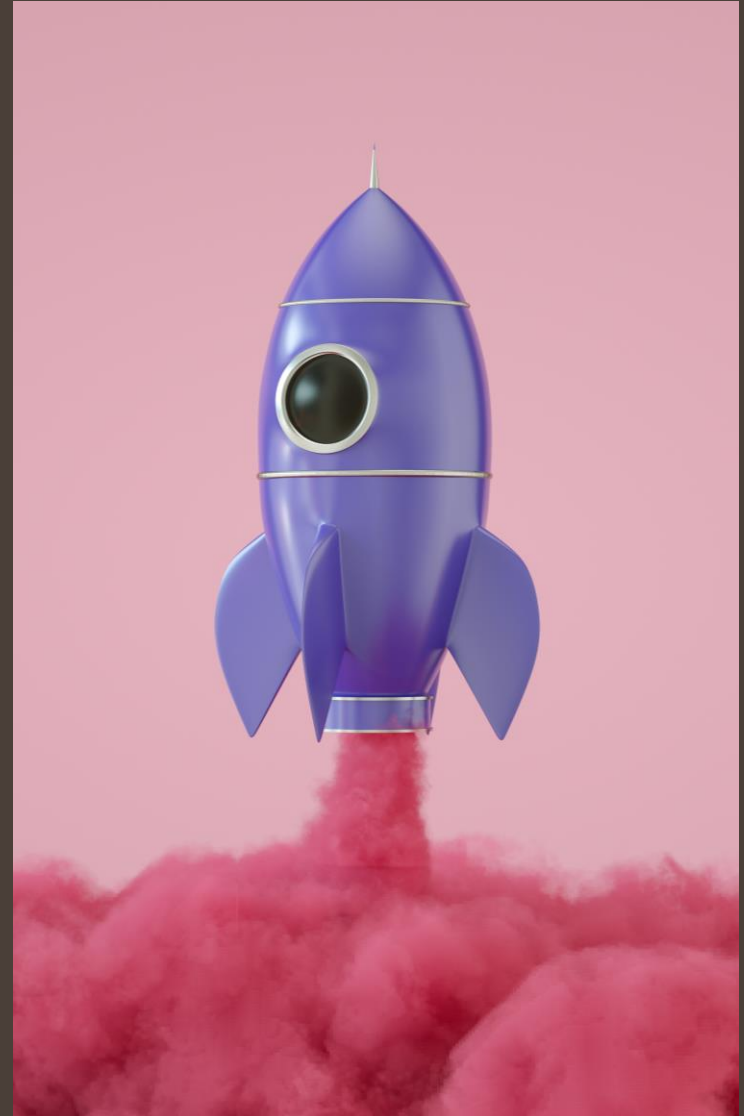
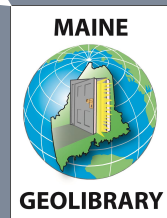
Space Data and Advanced Analytics Center Collaboration



Significant Opportunity for Data Advancement

- Relationship will focus on Analytics and Portal
- Maximize collaboration, minimize duplication
- Promote advanced analytics efforts
- Provide distribution arm for data using portal

Next meeting in April to look at MOU draft.



Space Data and Advanced Analytics Center Collaboration Scenarios

Data Analytics Center leverages and includes GeoLibrary portal as part of its connected system to access and use GeoLibrary curated data for analyses and products.

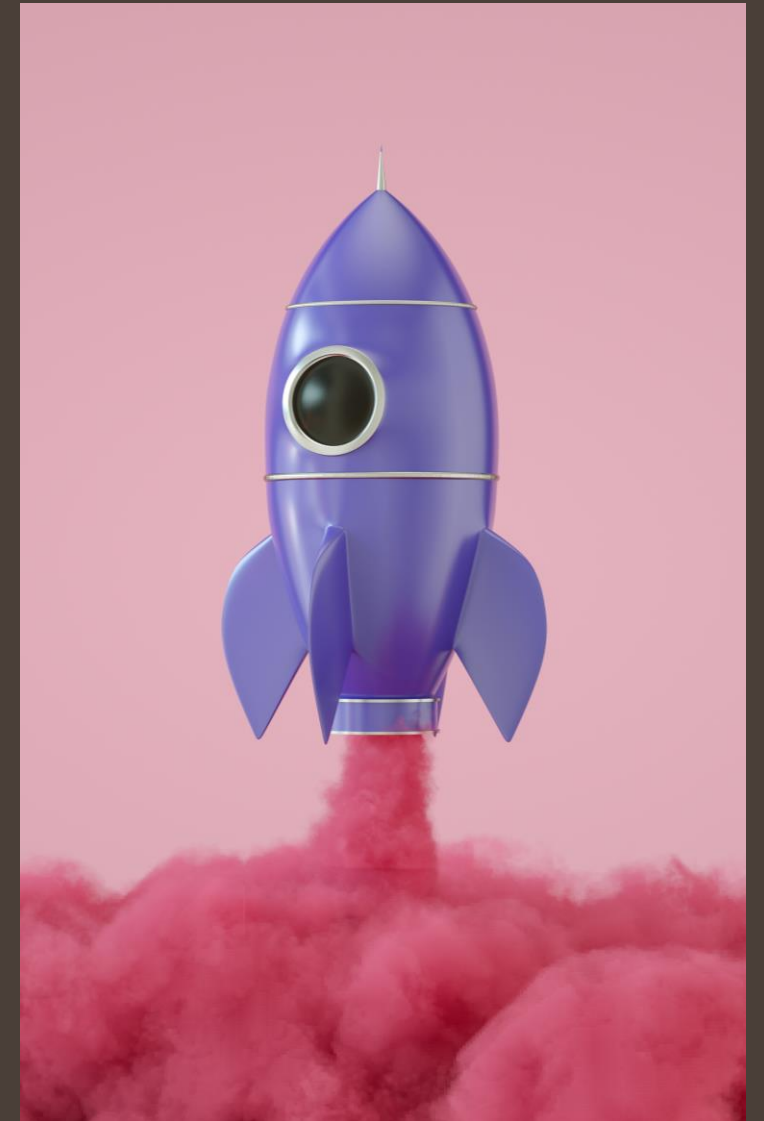
Data Analytics Center provides computing services that run on catalog data and other sources and could support efforts for derivative products.

Data Analytics Center provides data storage and access to external servers that could be referenced through GeoLibrary.

GeoLibrary data catalog and APIs used with Data Analytic Center analysis services and tools.

GeoLibrary can solicit contribution of more data from agencies and external custodians, such as field data and support derivatives with analytic services including machine learning.

GeoLibrary broadens reach to current and new data users.



Thanks, and
Happy Spring!

Next Meeting is April 17
at 10:00 AM

