



# COMMUNITY

RESILIENCE PARTNERSHIP



**GOVERNOR'S OFFICE OF**  
**Policy Innovation and the Future**

**RFA#202305099 Service Provider Grant**  
Informational Webinar - June 1, 2023

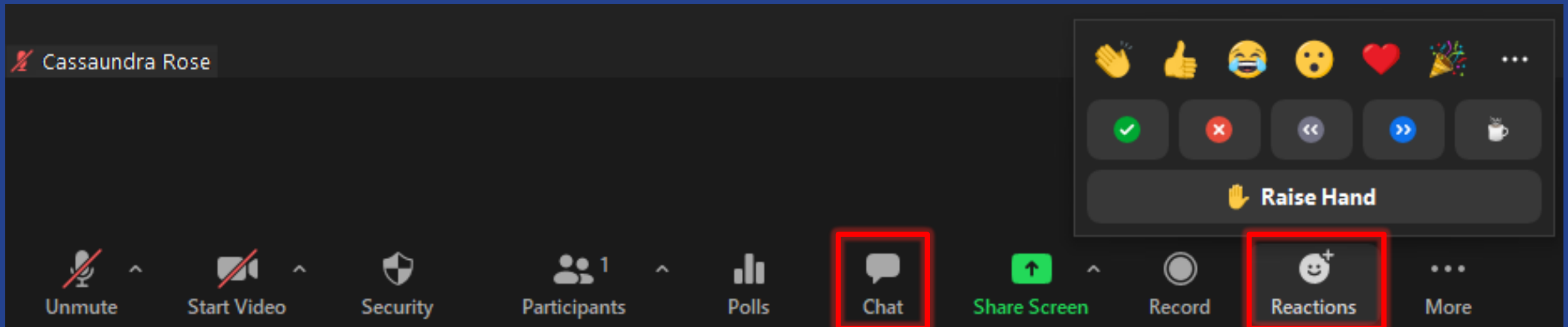
**Brian Ambrette**  
Senior Climate Resilience Coordinator

**Ashley Krulik**  
Community Resilience Partnership Program Manager



# Zoom Tech Reminders and How to Pose Questions

- Please remain on mute unless invited to speak
- Questions can be submitted via the chat
- Use the Reactions -> “Raise Hand” button to ask a question live



# CLIMATE COUNCIL GOALS



**12.01.24**

Updated Climate Action  
Plan Due



Achieve State Carbon  
Neutrality by

**2045**

REDUCE MAINE'S GREENHOUSE GAS EMISSIONS BY  
TARGETS OUTLINED IN STATE LAW

**45%**

BELOW 1990 LEVELS  
BY 2030

**80%**

BELOW 1990 LEVELS  
BY 2050



ENSURE MAINE PEOPLE, INDUSTRIES, AND COMMUNITIES ARE RESILIENT  
TO THE IMPACTS OF CLIMATE CHANGE.





A FOUR-YEAR PLAN FOR CLIMATE ACTION



MAINE

WON'T WAIT

DECEMBER 2020

MAINE CLIMATE COUNCIL



# Maine's Climate Action Strategies



**A.** Embrace the Future of Transportation in Maine



**D.** Grow Maine's Clean Energy Economy and Good Jobs



**G.** Invest in Climate-Ready Infrastructure



**B.** Modernize Maine's Buildings



**E.** Protect Maine's Environment and Working Lands and Waters, Increase Carbon Sequestration



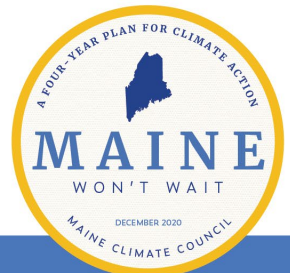
**H.** Engage People and Communities in Climate Impacts and Program Opportunities



**C.** Reduce Carbon Emissions the Energy and Industrial Sectors through Clean Energy Innovation



**F.** Build Healthy and Resilient Communities



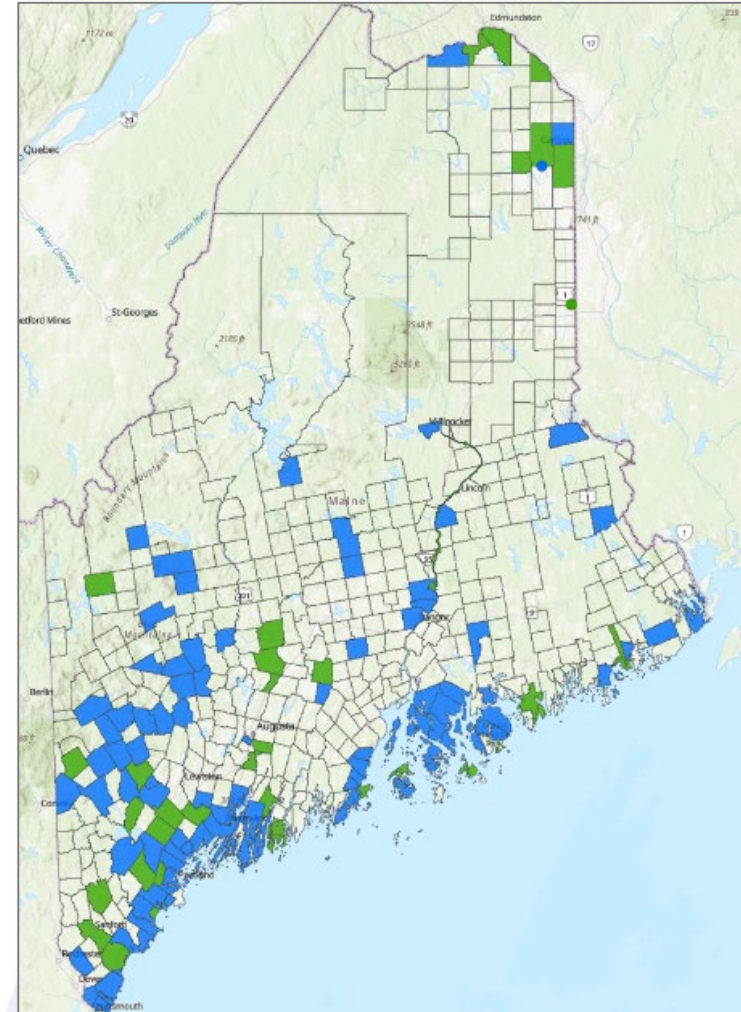
# Community Resilience Partnership

[www.maine.gov/future/climate/community-resilience-partnership](http://www.maine.gov/future/climate/community-resilience-partnership)

## Purpose

Through **grants and technical assistance**, the Community Resilience Partnership assists communities to:

- **reduce carbon emissions,**
- **transition to clean energy, and**
- **become more resilient** to climate change effects such as to extreme weather, flooding, rising sea levels, public health impacts, and more.



# Community Resilience Partnership

**\$3 million** in the biennial budget for local, tribal, and regional grants and assistance to reduce carbon emissions, transition to clean energy, and prepare for climate change impacts. (Governor Mills is proposing additional funding)

## Two funding opportunities

- **Grants to communities** for planning and implementation
- **Grants to service provider organizations** to help communities get started

# Informational Webinars

GOPIF is hosting two webinars about the Partnership. Each webinar covers one of the two grants. All webinars will be recorded and posted to the Partnership website for replay.

June 1, 1pm - **Service Provider Grant** Informational Webinar

June 1, 3pm - **Community Action Grant** Informational Webinar

Recordings accessible at: [www.maine.gov/future/climate/community-resilience-partnership](http://www.maine.gov/future/climate/community-resilience-partnership)





# Agenda

Service Provider Grants are intended to enable organizations **to aid communities in enrolling in the Community Resilience Partnership** and apply for grant funds to undertake priority projects.

- 1) Enrolling in the Partnership
- 2) Community Action Grant overview
- 3) Service Provider Grant details
- 4) Information about the Service Provider Grants for this round

# Enrolling in the Partnership

1. **Pass a municipal resolution or obtain a letter from a tribal chief or UT supervisor committing to participate**
  - Model language provided
2. **Complete two self-assessments**
  - List of Community Actions – completed actions
  - Community Resilience Self-evaluation
3. **Hold a community workshop** and set priority action items
4. **Submit enrollment materials** through the online form

Rolling enrollment – no deadlines.

Community Resilience Partnership

Program Contact: Brian Ambrette  
brian.ambrette@maine.gov

Community Resilience Partnership | Office of Policy Innovation & Future (maine.gov)

---

**Community Resilience Self-Evaluation**

**Instructions:** This tool is intended to help organize your community's approach to increasing resilience to natural hazards and climate change impacts. Answer the questions to the best of your knowledge and seek information from your colleagues in municipal and county government and organizations in your community. Provide any relevant information in the explanation field. If it is difficult to give a clear yes or no response to a question, use the explanation field to explain why. **There are no wrong answers and the responses here will not affect your community's eligibility to receive grants.** Where the response to a question is no, that may in

Community Resilience Partnership		
List of Community Actions		
Revised April 2023		
See Instructions on Introduction tab below.		
Date:	Strategy Areas & Actions (mark Column A as complete, in progress, future priority, etc.)	Additional Resources (\$=funding source)
Was this evaluation discussed at a community workshop?	<b>Strategy Area A: Embrace the Future of Transportation</b>	
Accelerate the Transition to Electric Vehicles (EVs)		
Once the questions on the next tab are answered, please provide the following information:	<b>Note:</b> A maximum of \$7,500 of a Community Action Grant may be applied to the purchase of an electric vehicle for municipal or tribal fleets (Action A1). Eligible vehicles for Action A1 include light-duty, medium-duty, and heavy-duty on-road electric vehicles as well as electric riding mowers and electric outboard engines that are part of a municipal fleet, all subject to the maximum award amount. <b>Where applicable, Efficiency Maine's electric vehicle rebate (Action A1) or EV charging rebate (Action A2) must be included in the applicant's project budget.</b>	
What are two things you are doing well?	A1	Purchase or lease electric vehicles for municipal or tribal government-owned vehicle fleets. <a href="#">Efficiency Maine: Municipal EV rebates (\$)</a>
What are two areas that need improvement in the short-term?	A2	Install EV chargers in public parking areas. <a href="#">Efficiency Maine: EV supply equipment initiative (\$)</a>
What is important for you to address in the long-term?	A3	Adopt ordinances to encourage EV charging infrastructure, including at multifamily dwellings, businesses, and public parking areas. <a href="#">Municipal Electric Vehicle Readiness Toolkit (Southern Maine Planning and Development Commission)</a>
	A4	Adopt an anti-idling ordinance. <a href="#">Example: Bar Harbor Municipal Code</a>
Improve Mobility and Reduce Vehicle Miles Traveled (VMT)		
What specific 3 to 5 action priorities for your community?	A5	Implement strategies that increase public transit ridership and alternative transportation modes, including bike and walking infrastructure.
	A6	Implement strategies that encourage municipal/tribal employees to commute via carpools, public transit, bike/walk, or other alternatives to single-occupancy vehicles.
	A7	Adopt a telework policy for municipal/tribal government staff positions that can work remotely some days per week.
	A8	Adopt land use and development policies in plans and codes that reduce the need for driving (e.g. locating schools, workplaces, and shopping near where people live; encouraging density of development near housing and transportation).

Revised December 1, 2021



# Community Action Grants

*Grants to communities for priority projects that reduce energy use and costs and/or make their community more resilient to climate change effects, such as flooding, extreme weather, drought, and public health impacts.*

## Intended outcomes:

Emissions reductions and improved community resilience.

Leveraging federal and other funds for larger projects.

# Community Action Grants

## Eligibility

- **Municipalities and federally recognized tribes in Maine**
  - Townships, plantations, unorganized territories are eligible
  - Collaborative multi-community applications are encouraged
- Currently enrolled or submitting an enrollment form with Community Action Grant application
- Regional planning organizations (RPOs, COGs, EDOs, and EMAs) may apply on behalf of enrolled communities with letters of commitment



# Service Provider Grants

*Grants to regional service providers who recruit groups of two to five communities to join the Partnership, conduct robust community engagement that sets priorities for implementing actions on the List of Community Actions, and apply for Community Action Grants and other funding opportunities to implement community energy and climate priorities.*

## Intended outcomes:

New enrollments by 2-5 communities. Lists of each community's priority projects and cooperative priorities. Assistance to communities in applying for Community Action Grants.

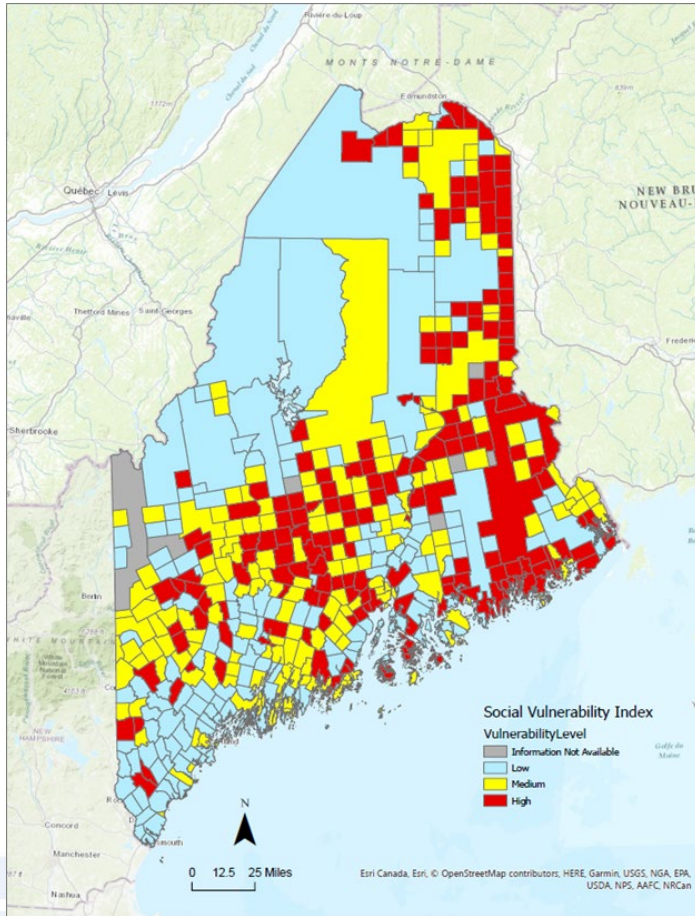
# Service Provider Grants

## Eligibility

- Regional planning organizations, councils of governments, regional economic development organizations, county governments (including EMAs and soil conservation districts)
- Nonprofits
- Academic institutions and cooperative extension programs
- For-profit enterprises
- In special cases, a municipality that demonstrates robust in-house capacity that will be provided to smaller communities in the region



# Service Provider Grants



**Awards:** Applicants may request up to \$10,000 per community in the group. 15% cost share (in-kind allowed)

- An additional \$2,500 may be requested for each community with population below 4,000 or in the highest social vulnerability category
- Grant period is 12 months. However, service providers are encouraged to prepare communities for the earliest practicable enrollment and the next Community Action Grant deadline

# Service Provider Grants

## Tasks

- As part of the grant application, **recruit a group of 2-5 communities** and provide letters of support from each (strongly encouraged to seek letters from municipal officials and/or town councils or selectboards)
  - **Scoring - additional points available:** Up to 10 points available for recruiting medium/high SVI communities and/or small/medium population communities
- Once grant is awarded, assist the communities in the group with **completing the three enrollment activities** and submitting for enrollment
- Assist communities in the group with **applying for Community Action Grants** or other funding options for priority actions
- Provide to GOPIF **quarterly updates, project deliverables, and brief case study** on lessons learned



# Information for this grant round

**\$400,000 available for awards in this round**

- Anticipating 6-12 awards

## **Considerations for applicants**

- Strong applications will demonstrate the strength of service provider (and partners, if desired) in both climate resilience and clean energy/emissions reductions
- Clearly communicate to community leaders and staff about the enrollment requirements and their roles in the enrollment process.

# Applying to the Service Provider Grant Request for Applications (RFA)

- **Application deadline: June 23, 2023**
- Questions due June 2, 2023 (optional, see instructions in the RFA)
  - Responses will be posted to Procurement Services website about a week later.
- RFA available at: <https://www.maine.gov/dafs/bbm/procurementservices/vendors/grants> (also via a link on the Partnership homepage)
  - RFA contains the required application form.
  - Application form and letters of support must be submitted as a package via the instructions in the RFA. None of the materials should be sent directly to GOPIF, they will not be read.
  - Be sure that letters of support from each community are signed, dated, and on community letterhead.
- Award notifications anticipated approximately late July



# Future Grant Rounds and Application Submittals

- Pending availability of funding, the Department anticipates future grant rounds to occur at approximately 8-10 month intervals. A potential schedule of future rounds would be:
  - Round 4: Winter-Spring 2024
  - Round 5: Fall-Winter 2024
- Applicants may apply only once per grant round but may apply to subsequent grant rounds as desired.

# Regional Coordinators

**Region 1** York, Cumberland, Sagadahoc, Lincoln, Knox and southern Oxford counties

**Region 1 Coordination Collaborative (R1CC)**  
Gabe McPhail - [gabe@rcmaine.org](mailto:gabe@rcmaine.org)

**Region 2** Waldo, Hancock, and Washington counties

**Sunrise County Economic Council**  
Tanya Rucosky - [trucosky@sunrisecounty.org](mailto:trucosky@sunrisecounty.org)

**Region 3** Androscoggin, Oxford, Kennebec, Franklin, and Somerset counties

**Androscoggin Valley Council of Governments**  
Zach Gosselin- [zgosselin@avcog.org](mailto:zgosselin@avcog.org)

**Region 4** Piscataquis, Aroostook, and Penobscot counties

**Eastern Maine Development Corporation**  
Laurie Osher - [loser@emdc.org](mailto:loser@emdc.org)



# Website and Contact

[www.maine.gov/future/climate/community-resilience-partnership](http://www.maine.gov/future/climate/community-resilience-partnership)

- Joining the Partnership
- Links to the grant applications
- Frequently Asked Questions

**Ashley Krulik**

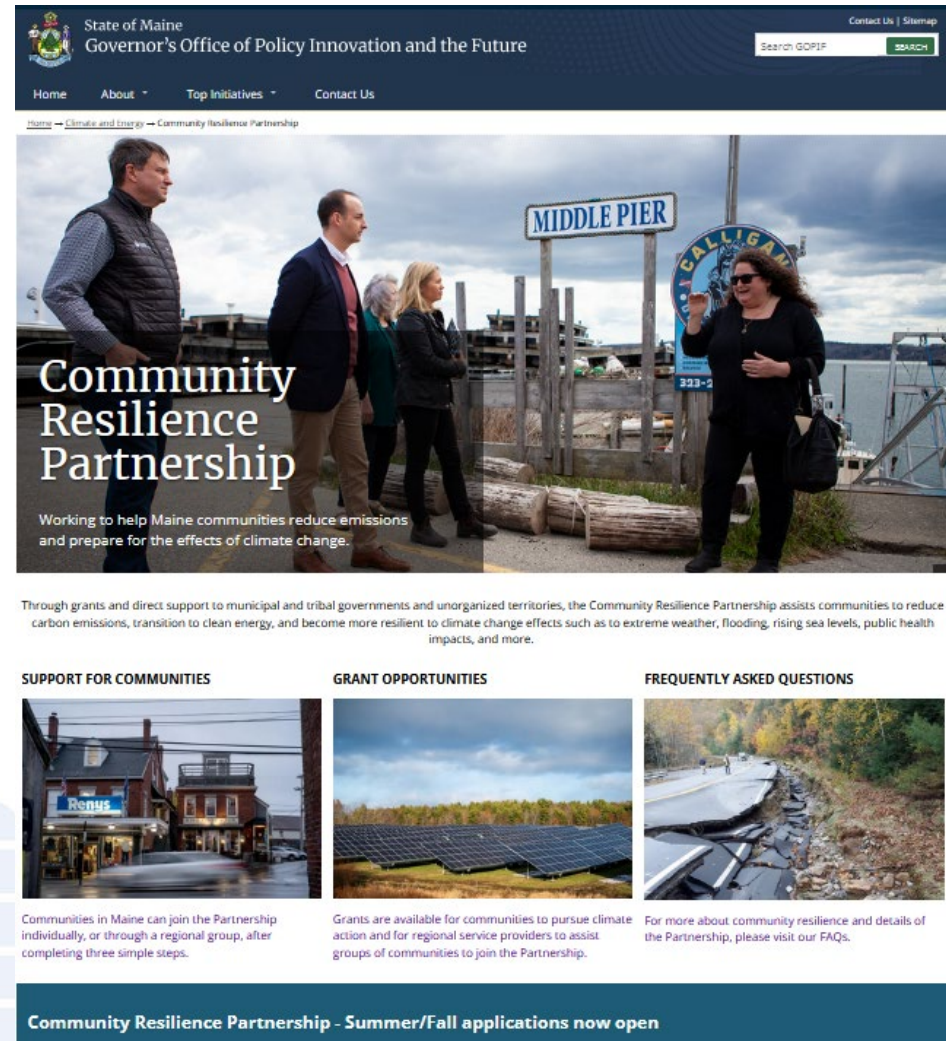
Community Resilience Partnership Program Manager

[ashley.krulik@maine.gov](mailto:ashley.krulik@maine.gov)

**Brian Ambrette**

Senior Climate Resilience Coordinator

[brian.ambrette@maine.gov](mailto:brian.ambrette@maine.gov)



The screenshot shows the website for the Community Resilience Partnership. The header includes the State of Maine logo and the text "State of Maine Governor's Office of Policy Innovation and the Future". A search bar is located in the top right corner. The main navigation menu includes "Home", "About", "Top Initiatives", and "Contact Us". The breadcrumb trail reads "Home > Climate and Energy > Community Resilience Partnership". The main image shows a group of people standing on a pier, with a sign that says "MIDDLE PIER". The text "Community Resilience Partnership" is overlaid on the image, followed by the tagline "Working to help Maine communities reduce emissions and prepare for the effects of climate change." Below the main image, there is a paragraph of text: "Through grants and direct support to municipal and tribal governments and unorganized territories, the Community Resilience Partnership assists communities to reduce carbon emissions, transition to clean energy, and become more resilient to climate change effects such as to extreme weather, flooding, rising sea levels, public health impacts, and more." The website is divided into three columns: "SUPPORT FOR COMMUNITIES" with an image of a town street, "GRANT OPPORTUNITIES" with an image of solar panels, and "FREQUENTLY ASKED QUESTIONS" with an image of a damaged road. Each column has a brief description of the service or opportunity. At the bottom, a dark blue banner reads "Community Resilience Partnership - Summer/Fall applications now open".

State of Maine  
Governor's Office of Policy Innovation and the Future

Home About Top Initiatives Contact Us

Home > Climate and Energy > Community Resilience Partnership

## Community Resilience Partnership

Working to help Maine communities reduce emissions and prepare for the effects of climate change.

Through grants and direct support to municipal and tribal governments and unorganized territories, the Community Resilience Partnership assists communities to reduce carbon emissions, transition to clean energy, and become more resilient to climate change effects such as to extreme weather, flooding, rising sea levels, public health impacts, and more.

### SUPPORT FOR COMMUNITIES

Communities in Maine can join the Partnership individually, or through a regional group, after completing three simple steps.

### GRANT OPPORTUNITIES

Grants are available for communities to pursue climate action and for regional service providers to assist groups of communities to join the Partnership.

### FREQUENTLY ASKED QUESTIONS

For more about community resilience and details of the Partnership, please visit our FAQs.

Community Resilience Partnership - Summer/Fall applications now open



# Questions

Please put questions into the chat

# Thank You

[www.maine.gov/future/climate/community-resilience-partnership](http://www.maine.gov/future/climate/community-resilience-partnership)

