

Reducing Greenhouse Gas Emissions from Solid Waste Management

Maine Climate Council
Materials Management Task Force

3/22/2024



ESTABLISHED 1975

RECYCLING • SOLUTIONS • ORGANICS • COLLECTION • ENERGY • LANDFILLS

Who We Are

Casella was founded in 1975 as a single truck collection service operation in Rutland, Vermont. In 1977, we opened the first recycling facility in the state. From our Vermont roots, we've grown through a commitment to advancing material sustainability in collaboration with our customers and the communities we serve.

We see "waste" as an opportunity for innovative conversion into a resource with economic and environmental value.

Our focus is on building and growing our people, protecting public health and the environment, and creating and sharing sustainable value by conserving and renewing resources for future generations.



+4,000

EMPLOYEES



4.8x

NET CLIMATE BENEFIT FACTOR



1,200+

COLLECTION VEHICLES



1MM+

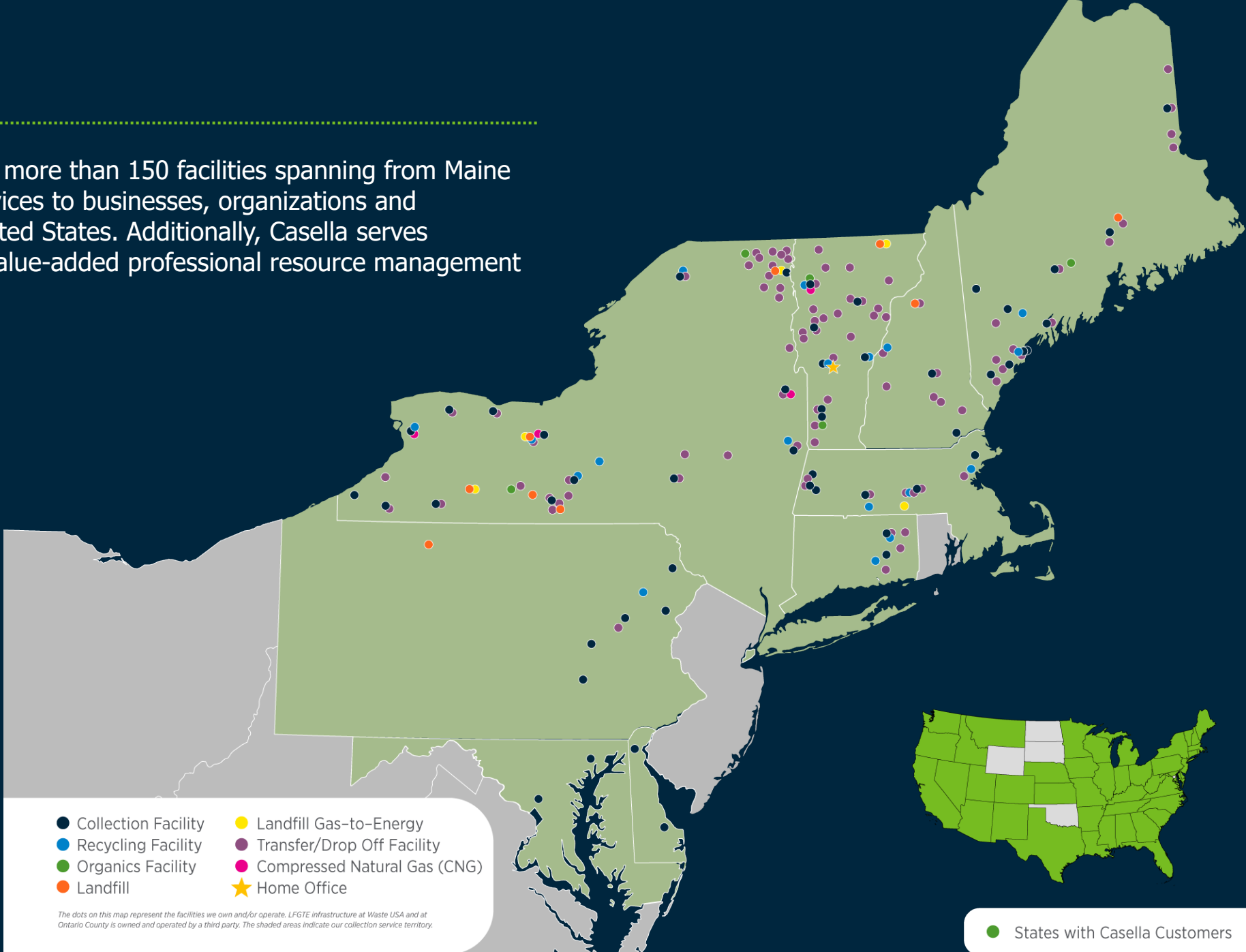
TONS RECYCLED PER YEAR



John and Doug Casella

Our Locations

Casella's core operations, comprised of more than 150 facilities spanning from Maine to Maryland, deliver a full range of services to businesses, organizations and households throughout the Eastern United States. Additionally, Casella serves customers in 44 states with a host of value-added professional resource management services.



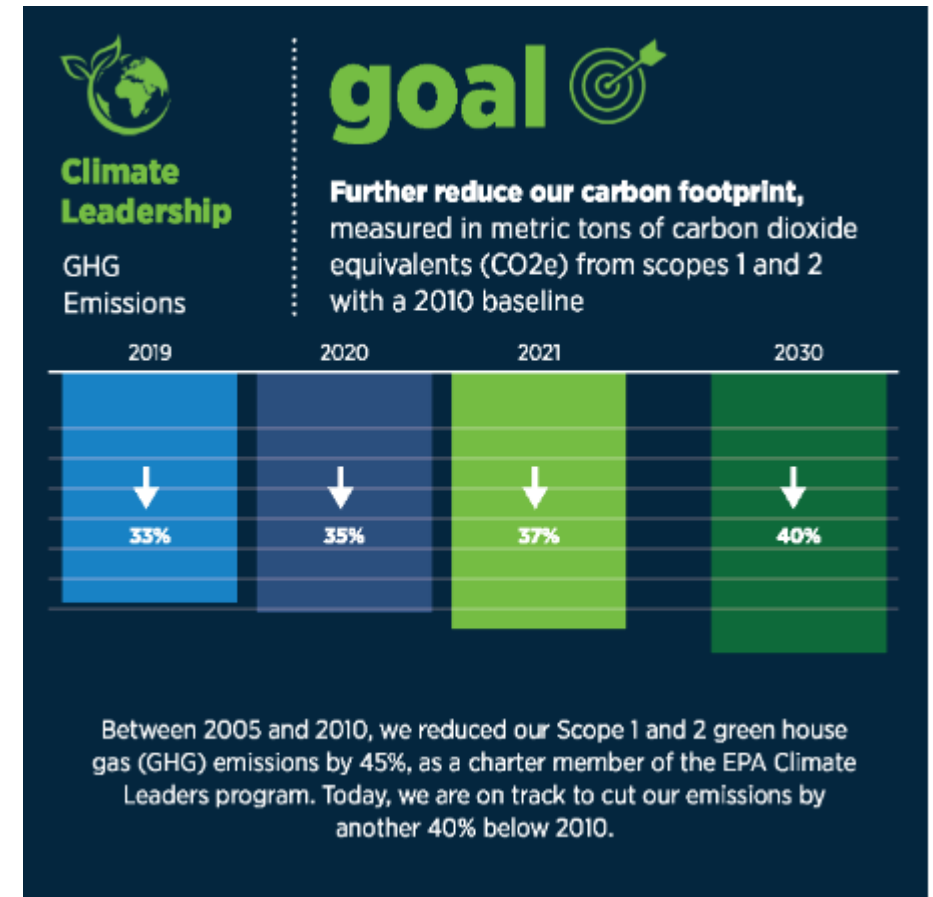
Reducing GHG Emissions at Casella

Background

- Casella's carbon accounting dates to 2005. We voluntarily served as a charter member of the EPA Climate Leaders Program.
- We cut our emissions by 45% between 2005 and 2010. Received an EPA Climate Leadership Award in 2012.
- New goal: 40% below 2010 by 2030.

Measures to advance toward our goal

- Landfills: 81% of our footprint – reduce via engineering design (GCCS, cover, capping) and daily operations (tuning, maintenance)
- Fleet: 17% of our footprint – reduce via route optimization, fleet modernization, onboard computers, alternative fuels
- Facilities: 2% of our footprint – reduce via energy efficiency, lighting retrofits, some renewable energy

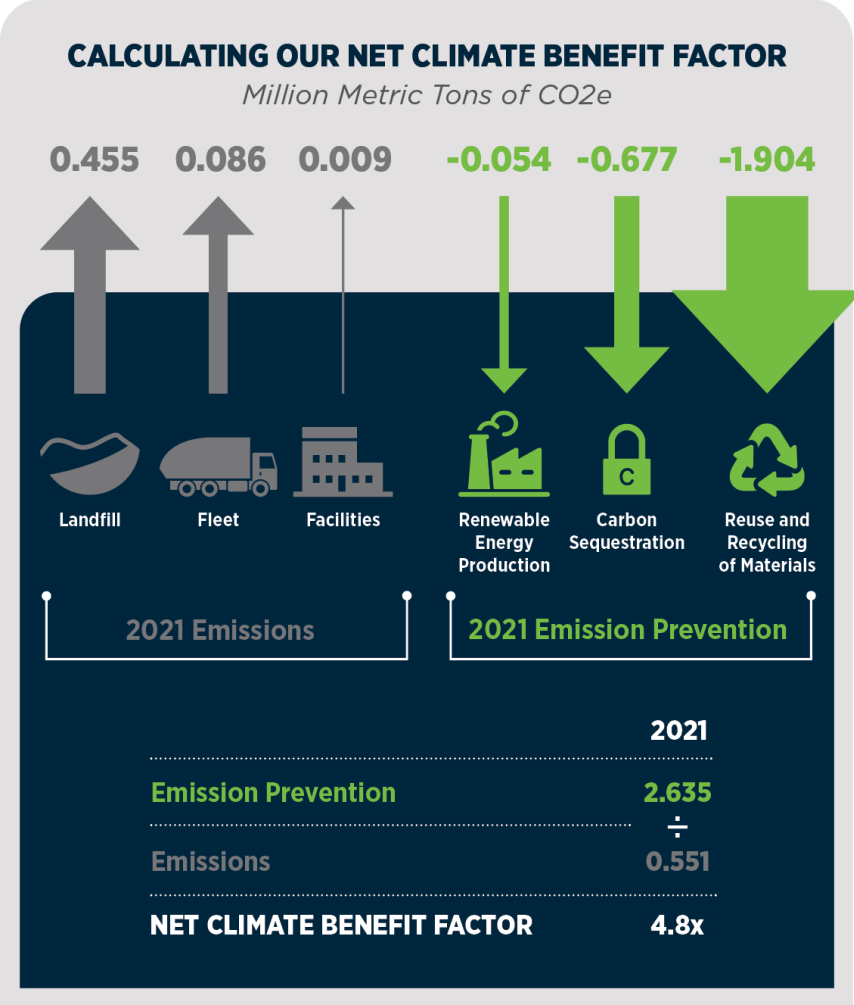


Casella Net Climate Benefit

- We are committed to reducing our direct emissions, but we know this doesn't capture the full beneficial impact our work has on the climate.
- For every metric ton of greenhouse gas we emit through our operations, we estimate that we prevent 4.8 metric tons of greenhouse gas emissions throughout the economy.
- Avoided emissions are not captured in standard GHG accounting.
- Waste reduction, reuse, and recycling drives emission reductions throughout global supply chains.

For more information:

<https://sustainability.casella.com/media/btkpt2ds/casella-report-sustainability2022.pdf>



ESTABLISHED 1973



For us, climate leadership is not about doing less; it is about doing more. It is about capturing more gas; producing more renewable energy; reducing, reusing, and recycling more; and sequestering more.

Thank You!



ESTABLISHED 1975

RECYCLING • SOLUTIONS • ORGANICS • COLLECTION • ENERGY • LANDFILLS

To learn more, please visit casella.com