

Community Engagement & Equity

Ashley Krulik

*Community Resilience Partnership Program
Manager*

Brian Ambrette

Senior Climate Resilience Coordinator



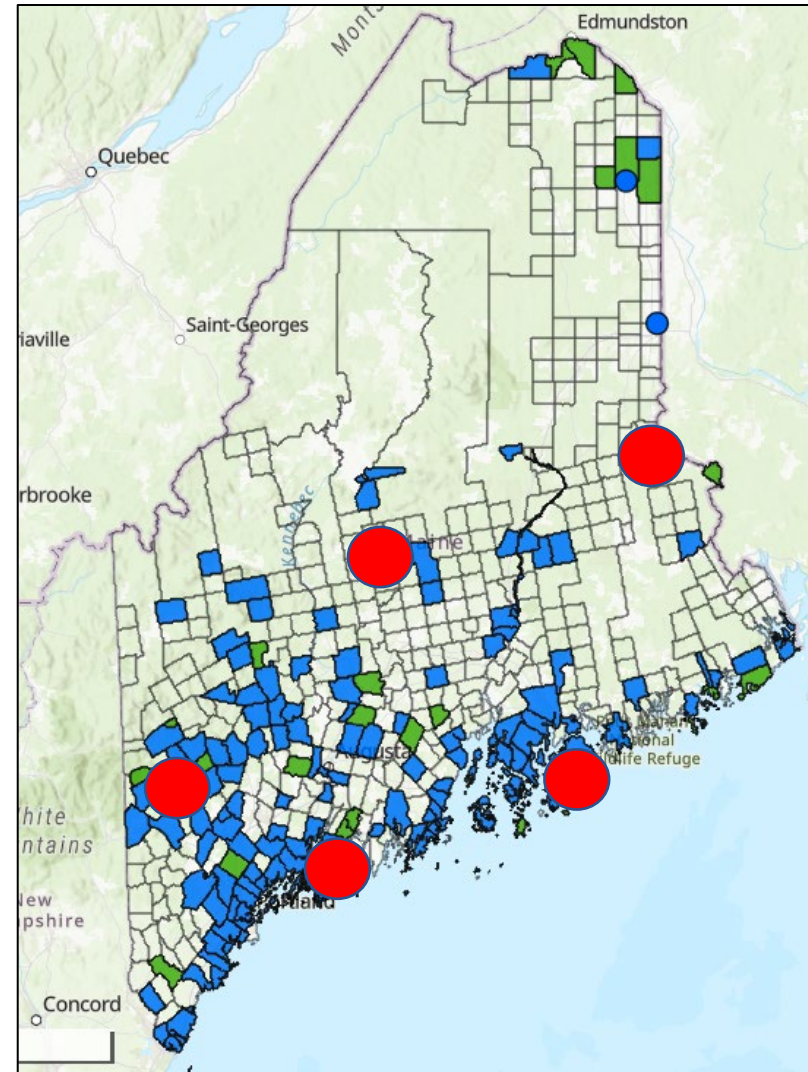
GOVERNOR'S OFFICE OF
Policy Innovation
and the Future

February 2, 2024

Community Resilience Partnership

Today's Agenda

- Equity and engagement framework
- Guidance and engagement tactics
- Examples from CRP communities
- Key takeaways
- Questions



● Community examples

Climate change impacts will create the greatest hardships for already marginalized communities.



*Deer Isle Causeway, January 2024
Photo credit: Town of Stonington*

Definitions

Community engagement seeks to better involve community members to achieve long-term and lasting outcomes, relationships, or decision-making.

Equitable climate action requires the thoughtful distribution of benefits and mitigation of burdens, so that policies intended to fight climate change do not instead cause further harm.*

*Final Recommendations of the Maine Climate Council Equity Subcommittee Report, March 2023



"I pledge that my Administration will work to prevent and mitigate climate change at every turn, helping communities become resilient to those changes already underway and embracing clean energy opportunities to create jobs and wean our state off fossil fuels. We will lead in this effort to ensure that our children and grandchildren will enjoy, as we do, Maine's unsurpassed bounty and beauty."

—Governor Janet T. Mills

Maine Climate Council created by LD 1679

Governor's Bill sponsored by Senator David
Woodsome overwhelming bipartisan support,
signed June 2019



Equity Report to Maine Climate Council

- Priority Populations, Metrics and Tracking
- Sector-Specific Goals, Actions, Metrics
- Procedural Equity
- Gaps, Benchmarks and Baseline Data Needs

Aligned with Maine Won't Wait:

- A. Transportation
- B. Buildings, Homes & Businesses
- E. Energy Sector
- D. Clean Energy Workforce & Natural Resource Industries
- E. Natural and Working Lands
- F. Healthy and Resilient Communities
- G. Climate-Ready Infrastructure
- H. Engaging Maine People



Priority Populations

Priority Populations are...

Individuals & Households

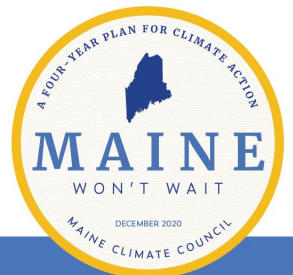
Communities & Geographic Areas

Businesses & Industries

...to consider and involve in climate action

Considerations:

- Some prioritized for all actions (e.g., low income); some sector-specific
- Multiple barriers or vulnerabilities



Priority Populations: Strategy F: Healthy and Resilient Communities

Individuals & Workers

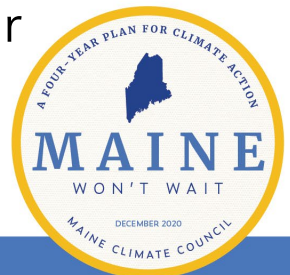
- Low-income people
- Health vulnerable individuals
- People with limited mobility
- People with limited English proficiency
- Outdoor workers

Communities & Geographic Areas

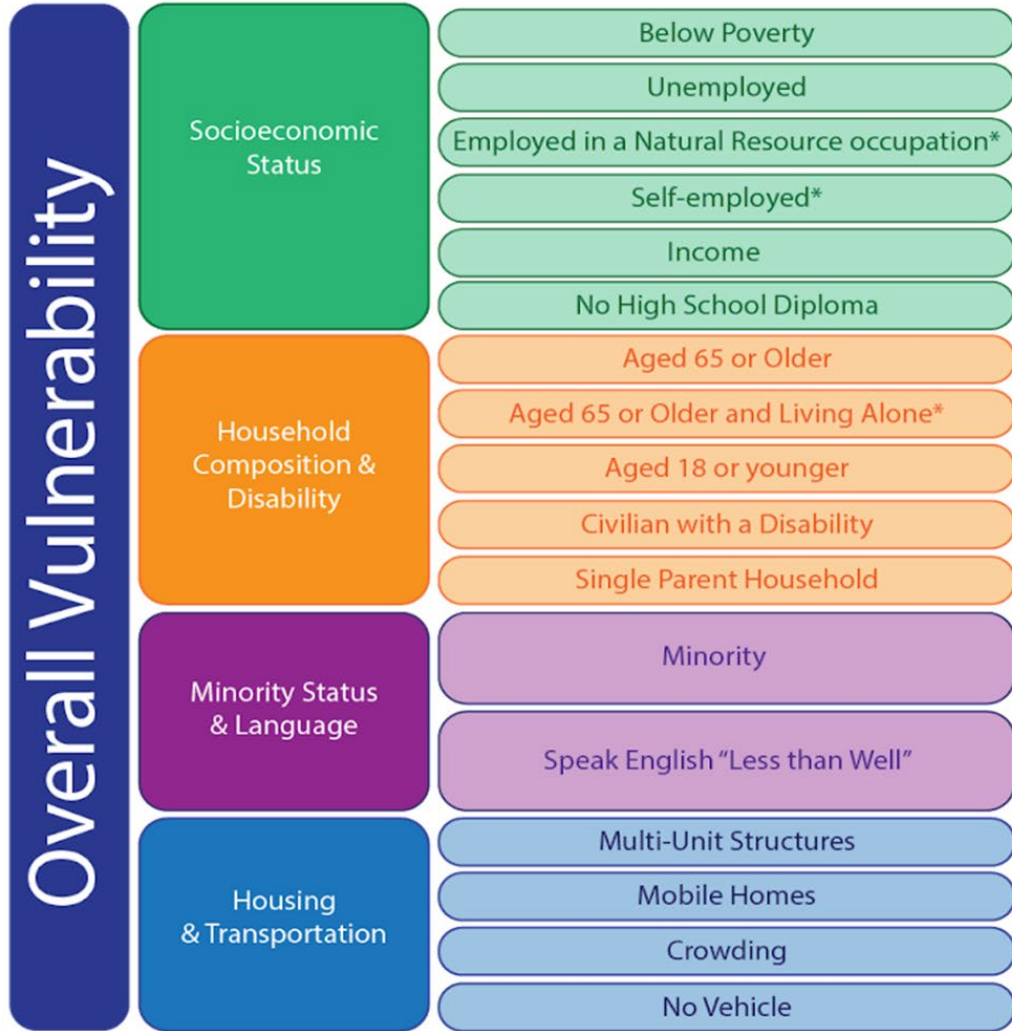
- Frontline, rural, low-income and disadvantaged communities

Considerations:

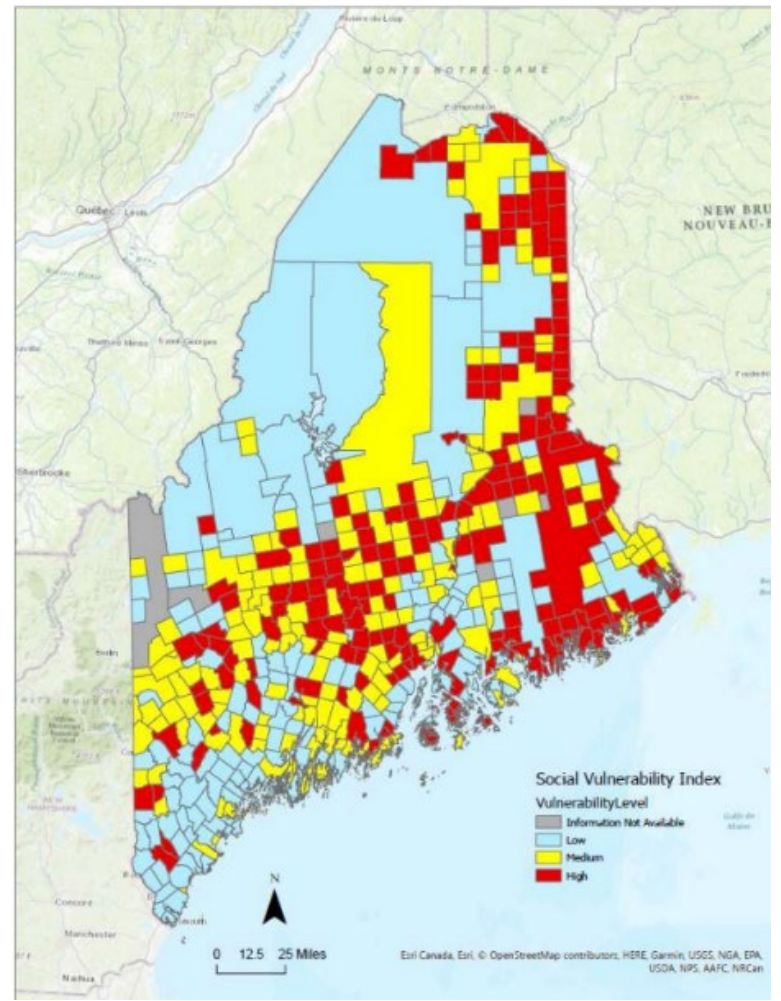
- Limited resources to respond
- Limited access to information about risks and hazards
- Limited access to employer protections
- Limited planning capacity
- Not all individuals in these groups face equal risks or vulnerabilities



Maine Social Vulnerability Index



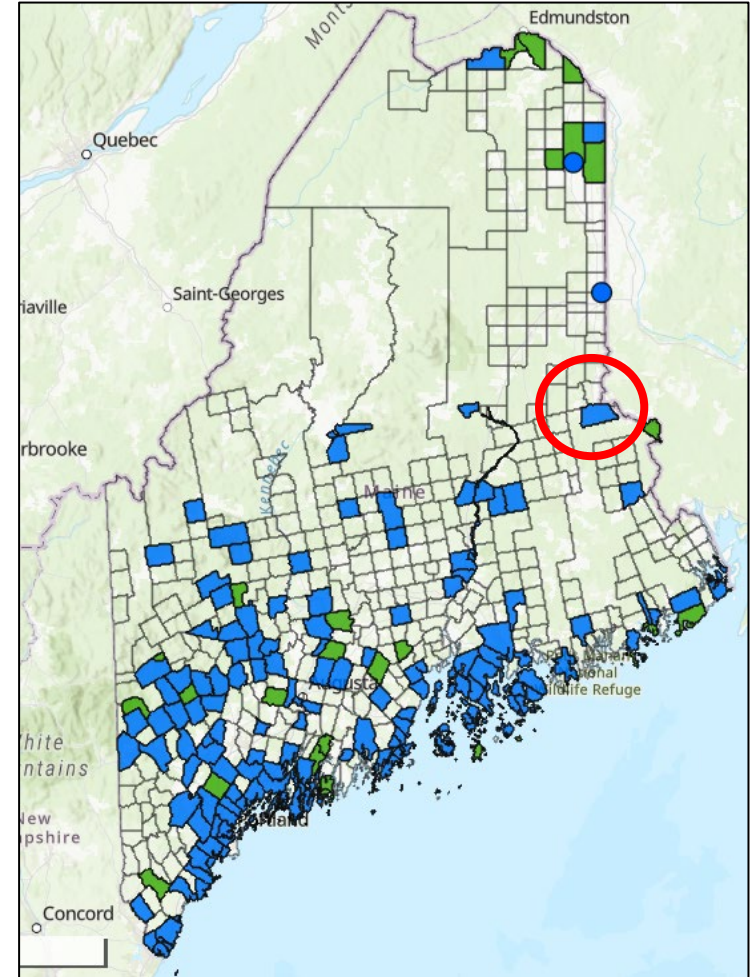
Source: Johnson, Bell, and Hertz 2016 (adapted from CDC/ATSDR SVI)



Danforth, ME

Project: Resiliency Planning for Danforth's Future

- Integrate climate resilience planning into updated Comprehensive Plan and Emergency Operations and Hazard Mitigation Plans
 - Follow *Municipal Climate Adaptation Guidance Series: Comprehensive Planning* by Stephanie Carver (2017) checklist
 - Distribute online community survey
 - Hold public visioning session
 - To include as many members of the community as possible, the Town will use mailing, newspaper, radio, digital media channels, and partners such as the local food pantry and senior center for outreach
 - Identified priority populations as those living in a state of financial precarity such as employment, housing, transportation, public services, and agriculture and forestry.



Priority Populations in Your Community

- Consider the people in your city or town who experience disparities in:
 - Reliable transportation
 - Reliable access to communication technology - telephone, broadband
 - Potable drinking water
 - Reliable home heating/cooling
 - Inequitable access to housing
 - Ability to respond to extreme weather
 - Access to health care
- Due to these ongoing inequities, these residents often have a weakened capacity to respond to climate stressors and recover from climate shocks.



Alna Climate Panel Workshop

Photo credit: Ed Pentaleri

Equity Considerations

- **Distributive equity** is how benefits and burdens are distributed - ensuring that programs related to Maine's climate action plan reach and serve all Maine people
- **Procedural equity** includes input and participation in decision-making processes - intended to enable meaningful participation in climate-related policy development, planning, and implementation, and to help ensure that priority populations and communities are aware of, and can access, state programs and funding opportunities for climate action.
- **Contextual or historical equity** recognizes historical or systemic injustices that lead to inequity - understanding different vulnerabilities and barriers across Maine communities and implementing processes for priority populations that work for them.
- **Corrective equity** recognizes the "uneven playing field" and seeks greater than proportional participation or investment

A framework to distribute benefits more equitably

- **Who** are vulnerable and disadvantaged community members?
- **What** are the challenges these community members face to increase climate resilience?
- **How** can the community overcome challenges and elevate, educate and empower all community members?



Spinney Mill Road, Arrowsic

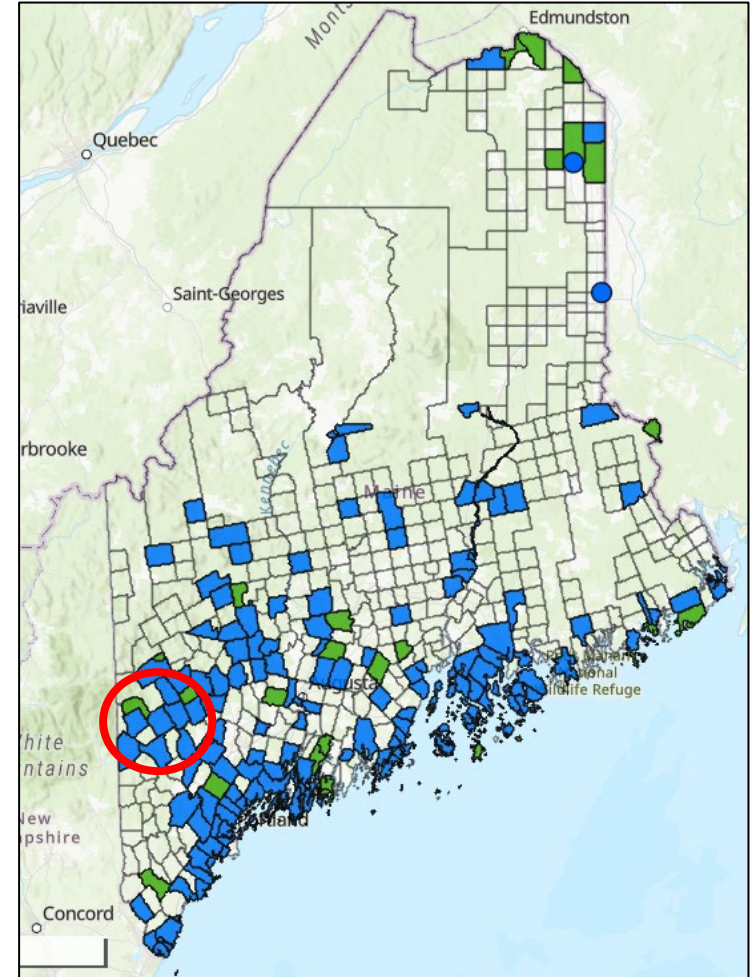
January 2024

Photo credit: via MaineDOT

Waterford, ME

Projects: Center of Refuge, Community Garden, Solar Installation

- Created warming/cooling shelter by installing heat pumps in Town Hall and Fire House
 - Asked residents for input on HVAC system
 - Center of Refuge will be available to all residents during extreme weather events
- Identified local partners to develop a community garden education program
- Installed 8.6 kW single tracker solar array in highly visible location
 - Benefitting all Waterford residents through reduction of the cost of the town hall's electrical bill
 - Installed iPad /tablet in Town Hall to dynamically show solar production per day and demonstrate benefit



Procedural Equity

Maine Climate Council Equity Subcommittee Procedural Equity Goal #1:

Increase participation by priority populations and communities in climate-related planning, program design, decision-making processes, and funding opportunities.

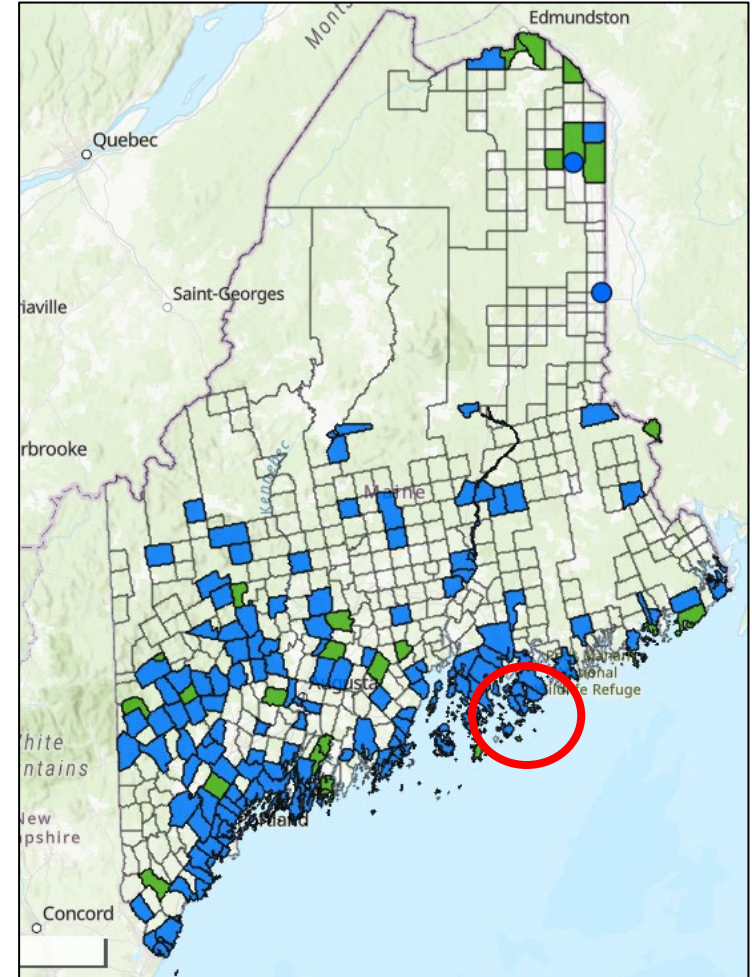
For individuals and households, barriers might include:

- lack of awareness about opportunities
- use of diverse communication and information networks
- lack of time or financial resources to access opportunities
- language access challenges
- lack of technical education or training
- lack of access to transportation to in-person meetings.

Cranberry Isles, ME

Project: Powering Progress: Granting Municipal Building Energy Resilience and Citizen Engagement to Cranberry Isles

- Solar array and battery backup storage
 - Saves taxpayer money
 - Community building will have power during storm events
 - Hosting a Town Open House for wider community after array/battery are installed to learn more about energy transitions and how this transition supports greater community well-being
- Committee Development and Community Engagement
 - Develop Community Resilience Committee
 - Offer comprehensive sea-level rise training
 - *Planning Forward* workshop to better understand changing climate
 - *Resource Workshop* to connect neighbors with relevant tools, resources, processes, and professionals
 - *Resilience Planning* to determine and prioritize next steps to best reflect and respond to climate planning needs



Procedural Equity + Engagement in Practice

- Consider practices, partners, and channels to reach and engage priority populations.
- Communication plans could identify opportunities to incorporate diverse and culturally appropriate understandings of climate action and impacts.
- Consider climate education and engagement partners and service providers to reach priority populations.



*Cranberry Isles Community Workshop
Photo credit: Island Institute*

Strategies for Increased Engagement

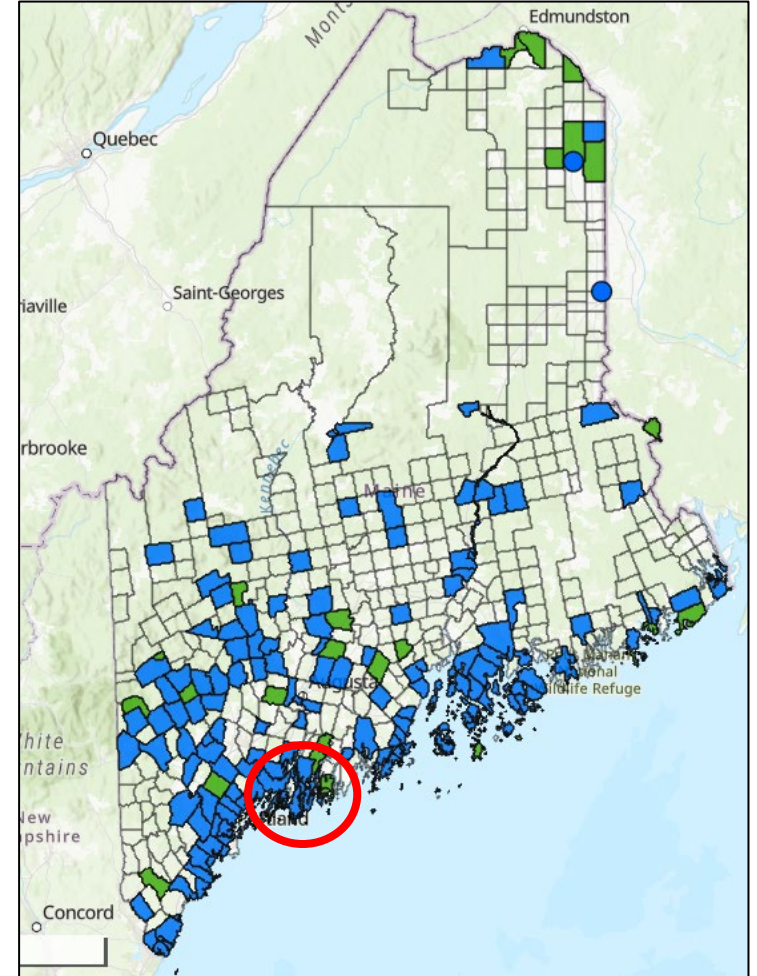
What might outreach look like in your community?

- A virtual option for participation for individuals lacking access to transportation or childcare.
- An event-specific carpool site to help defray mobility challenges for in-person attendees.
- Access to information from, and recordings of, the event.
- Plain-language stories, articles, climate data, and videos about climate action for the public.
- Culturally relevant expressions, metaphors, experiences, and storytelling approaches can all be employed to engage communities in conversations about science-based climate action.
- Translated outreach materials
- Offer a variety of meeting times, agendas, and avenues to participation to align with work and childcare schedules.
- Work with communities and community-based organizations to align outreach with existing trusted social and community networks and channels.

Westport Island, ME

Project: Sea Level Rise Risks and Adaptation for Westport Island Roads, Bridges, Tidal Inlets and Homes

- Establish sea level rise project ranges and identify most vulnerable roads, bridges, homes, and buildings
 - Conduct door-to-door outreach to residents of most susceptible locations to provide information and options
 - Public hearings on the study will be conducted at key milestones
 - Digital survey for public input
 - The outcome is to ensure the safety of all residents in the event of storm surge and/or rising sea levels that could impact access to the mainland.



Application Considerations

- Community engagement and consideration of equity are important components of CRP grant scope of work scores
- To align your proposal with the MCC equity and engagement objective, keep these key takeaways in mind:
 - Consider your priority populations
 - Develop a framework to distribute grant benefits equitably
 - Create a communications strategy that meets priority populations where they are at

State of Maine
 Governor's Office of Policy Innovation and the Future
APPLICATION COVER PAGE
 CAG2024-4
Community Resilience Partnership Community Action Grant

Applicant's Organization Name:	
Chief Executive - Name/Title:	
Tel:	E-mail:
Headquarters Street Address:	
Headquarters City/State/Zip:	
<i>(Provide information requested below if different from above)</i>	
Lead Point of Contact for Application - Name/Title:	
Tel:	E-mail:
Headquarters Street Address:	
Headquarters City/State/Zip:	

- This Application and the pricing structure contained herein will remain firm for a period of one hundred eighty (180) days from the date and time of the bid opening.
- No personnel currently employed by the Department or any other State agency participated, either directly or indirectly, in any activities relating to the preparation of the Applicant's Application.
- No attempt has been made, or will be made, by the Applicant to induce any other person or firm to submit or not to submit an Application.
- The above-named organization is the legal entity entering into the resulting contract with the Department should they be awarded the contract.
- The undersigned is authorized to enter contractual obligations on behalf of the above-named organization.

To the best of my knowledge, all information provided in the enclosed application, both programmatic and financial, is complete and accurate at the time of submission.

Name (Print):	Title:
Authorized Signature:	Date:

CAG2024-4 – APPLICATION 1



But I'm only insulating a Town Office!

- This is an opportunity to connect with your constituents
 - Show your taxpayers the cost savings and talk about the benefits to comfort, reliability, air quality, etc.
- Energy efficiency improvements will help residents save money, feel more comfortable in their homes, and be more resilient to extreme weather
- Energy efficiency improvements in town buildings will help the town save money, invest in additional energy efficiency and resilience projects, or provide new/additional services to priority populations.
- Sharing your story and experience will help residents prepare their own homes for the impacts of climate change



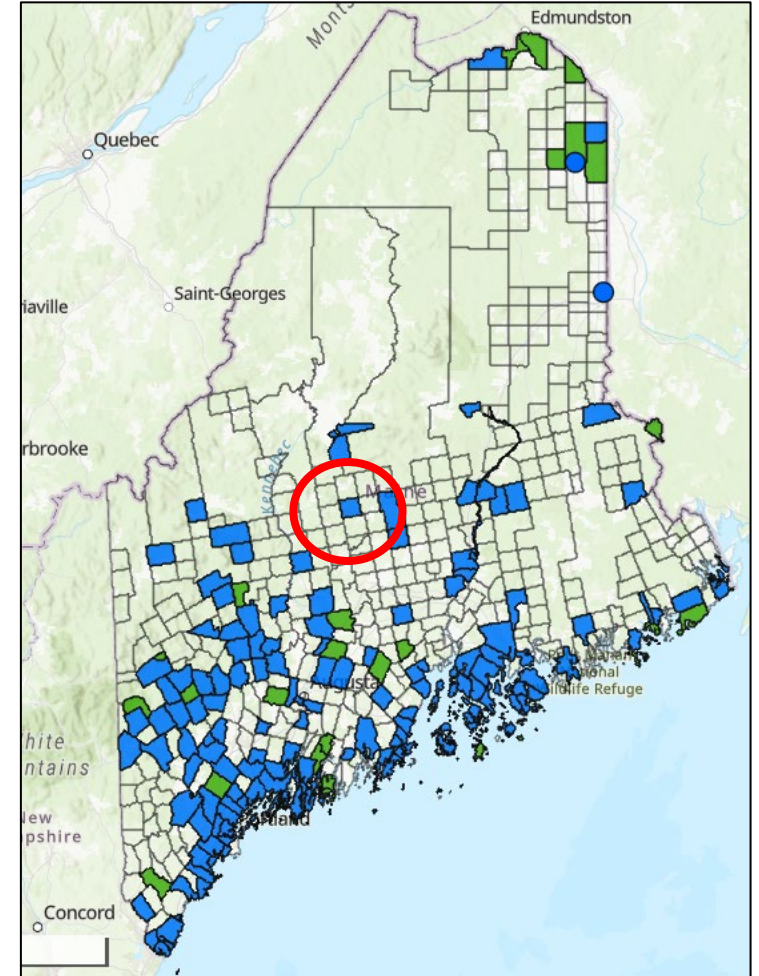
Lamoine Town Office

Photo credit: Larissa Thomas

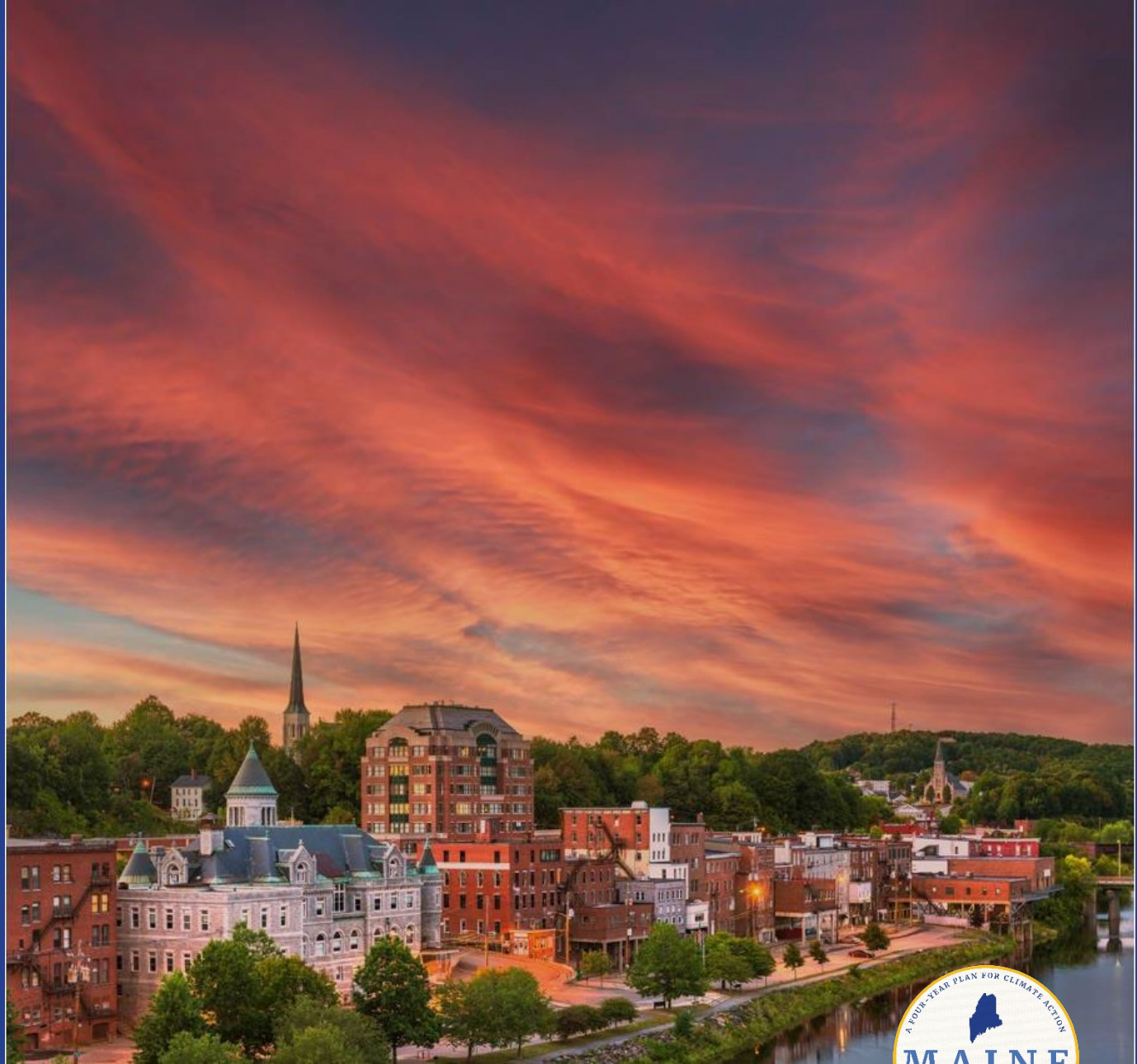
Abbot, ME

Project: Abbot Town Office Heat Pump and LED Indoor and Outdoor Lighting

- More efficient heating/cooling in the Town Office benefits all groups that utilize the building for a meeting space and extreme weather shelter.
- Met residents where they are: by knocking on the door of your neighbor, sign posts, signs at the general store and bakery, the transfer station and the sign board outside the Town Office



Questions?



Thank You

www.maine.gov/future/climate/community-resilience-partnership

