

Updates - Commissioner Lambrew

- Covid
 - Omicron variant still present; uptick in hospitalizations (includes coincidental hospitalizations); school outbreaks persist
 - 55%+ ages 5-17 fully vaccinated making Maine 7th highest state in vaccination category
 - Watching authorization of vaccine for 2 months-5 years old children
- Recognitions in April include Child Education Week (event with Governor, Dr. Todd Landry and Speaker Fecteau at State House) and Childhood Abuse Prevention month
 - Maine is participating in Best Place for Working Parents initiative (<https://bestplace4workingparents.com/>)
- Maine Jobs & Recovery Plan (<https://www.maine.gov/jobsplan/>)

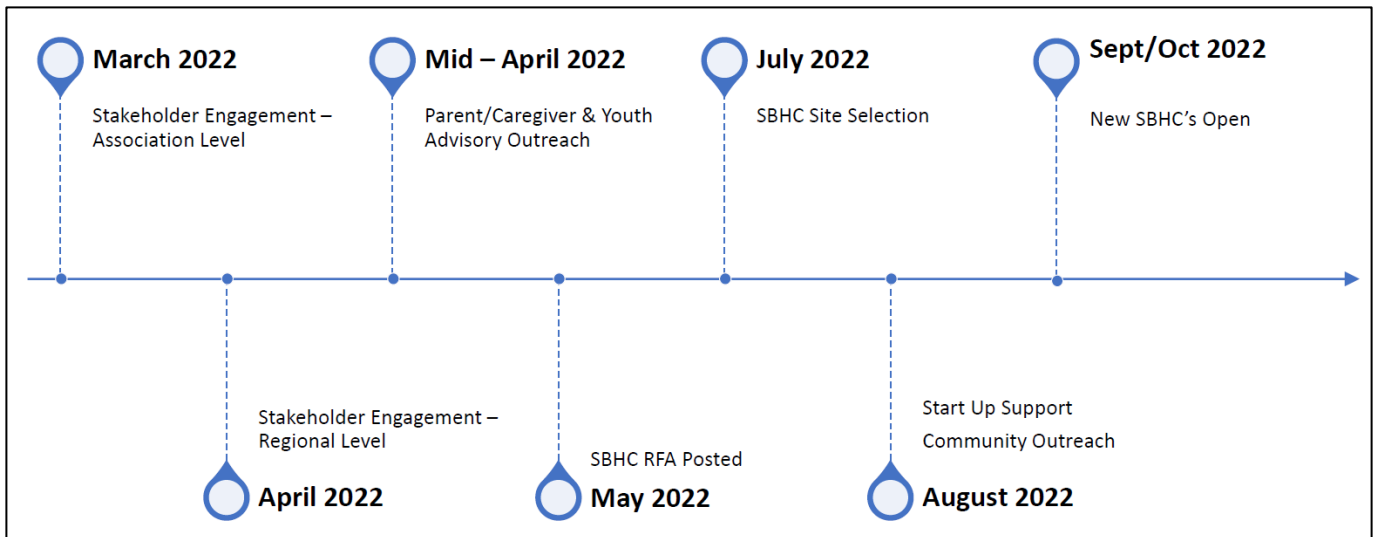
School Based Health Center (SBHC) Expansion - Sarah Squirrell, Sheila Nelson and Mary Herman
(see attachment)

- Exceptional collaboration between DHHS and DOE
- \$2.4 million Department of Education ESSER American Rescue Plan (ARP) funding to support initiative
 - 2-year grants; 12-15 new sites
- School Based Health Centers are a shared commitment/partnership between a school, community, and health care organization(s)
 - A key prevention strategy - reduce risk and barriers to care-improve health equity
 - Provide high-quality health and mental health care
 - Youth prefer to access health services familiar settings
 - Youth are enrolled by caregiver
 - Integrated model - treat whole student
 - Work with families
 - School provides the physical space
 - Reduce academic/learning loss
 - Health care provider receives the funding from CDC-provide health care staff, access to electronic health records, etc.
 - Extends care continuum, not replace existing services; works with existing school services and care providers but does not replace
- Maine School Based Health Centers and Community Schools
 - Support whole child/student
 - Majority are health care service providers and High Schools (working with health care providers); a few Middle Schools
 - Lots of areas in Maine are not being served
- Services provided by School Based Health Centers include:
 - Primary care prevention exams/services
 - Immunizations
 - Acute and chronic care

- Vision Services
- Behavioral and mental health - screening, assessment, and early intervention; group/individual counseling; referrals to specialized medical or behavioral health providers
- Oral health services (optional)
- Reproductive health services offered (optional)
- Provide Mental Health Care Services
 - Need/demand for services for Maine children/youth are at an all-time high
 - COVID 19 pandemic exacerbated existing disparities in access to mental health care
 - In the 2020 2021 school year, 77% of reported school-based health center visits were for mental health services
- Impacts/benefits to students include:
 - Improved student health and overall well being
 - Improved school performance and grade promotion
 - Decreased absenteeism and improved graduation rates
 - Reduced health disparities
 - Demonstrated cost best benefits for our health care system including lower Medicaid costs
 - Increased school connectedness
- Expansion Priorities
 - Develop new SBHC sites across the state - focus on rural/medically underserved regions
 - Strengthen outreach to students, families and the community
 - Cultivate community partnerships between Healthcare Providers, FQHC's and SAU's
 - Increase access to healthcare for students of color
 - Increase access to preventative oral/dental care

Component 1: Base Funding	Component 2: Enhanced Base Funding	Component 3: BOOST Funding
Base budget provided to all sites using current funding formula based on school population and students eligible for free and reduced lunch	Enhanced funding that both new and existing SBHC's can apply for to support planning and outreach, start up costs and coordination	Awarded based on site characteristic <ul style="list-style-type: none"> • Rural Site Factor • Equity Factor • Dental Factor
Total Base Funding Range Per Site: \$60,000 - \$78,5000		Total Boost Funding Range Per Site - \$10,000 - \$16,000
Total Approximate Annual Grant Funding: \$60,000 - \$94,500		

- State funding supports costs for uninsured/underinsured students, additional time during visits and preventive health appointments, confidential care that may not be billed to insurance. clinic coordination, data reporting twice a year), and quality improvement activities, outreach, startup cost and coordination, and dental startup/equipment costs
- Timeline - includes stakeholder meetings, outreach, site selection and regional engagement sessions in April



- Next Steps
 - Regional engagement sessions scheduled for April 2022
 - Family and youth outreach -intentional engagement of youth and parent advisory groups
 - Targeted outreach to areas of greatest need and underserved areas
 - Request for Applications (mid-May)

Question from Commissioner Lambrew

- How does plan address long-tern sustainability of plan?
 - Majority of funding come from billing revenue
 - Consulting with other states, billing tends to improve over time
 - Lots of energy/support on Federal level
 - Once health center is up and running, they become integral to school community

Question from Dr. Amy Belisle

- What are the efforts to get into elementary schools?
 - Working on model/pilot (care/family engagement is different) – looking at rural areas because they have a higher level of enrollment in health care centers and consolidated school sites
 - Looking at funding streams
 - Communities want CBHS for younger students

Workforce Development Programs for Youth - Commissioner Fortman and Ana Hicks

(see attachment)

- Apprenticeships
 - Focus on High School students
 - Registered apprenticeships – earn and learn model—combines classroom and on-the-job training; if program is completed one earns an industry recognized portable certificate
 - \$12 million (ARPA & federal grants) to expand & create new apprenticeship & pre-apprenticeship
 - \$3 million of this exclusively for youth apprenticeships
 - Somerset Career and Technical Center is the first Career and Technical Education (CTE) in state to have a registered apprenticeship program (<http://skowhegan.mainecte.org/>)
 - Targeted sectors include: hospitality, clean energy, healthcare, building trades, manufacturing, education, retail, agriculture & forestry

- Priority communities include: young adults (16-24), rural, BIPOC, women, disability, justice-involved, individuals w/o college degree, & older adults (55+)
- Allocation of funding through RFA process; application now closed
- Rehabilitation Services
 - Provided through the Division of Vocational Rehabilitation (DVR) and Division for the Blind and Visually Impaired (DBVI)
 - Emphasis on work-based learning in year-round programming
 - Every school has an assigned vocational rehabilitation coordinator
 - Every student can connect to the workforce
 - Over 6,000 youth with disabilities received VR services last year
- Youth Summer Career Development Opportunities – all programs combine learning skills with hands-on-learning
 - Step-up pre-college program for students with Autism - provides classroom and work experience
 - Bus tours of community college last two weeks in June
 - Robotics Academy – July 11
 - No Barriers - experiential program at Bryant Pond for students visually impaired
- Workforce Innovation and Opportunity Act (WIOA) - <https://www.maine.gov/doe/learning/adulted/wioa>
 - Federal funding (restricted) with a goal of connecting programming in education, economic development, and labor through local workforce boards and deliver to local providers
 - Service youth who are high school dropout, high school graduate/equivalent who is low income and basic skills deficient, justice involved, homeless/runaway, in/aged out of foster care, pregnant or parenting, have a disability, etc.
 - Services provided include leadership development, financial literacy, paid work experience, etc.
 - Challenge – connecting eligible youth to available services
 - 3 Service Providers Statewide

Eastern Maine Development Corporation (EMDC) - serving Androscoggin, Franklin, Hancock, Kennebec, Oxford, Piscataquis, Penobscot, Somerset, and Washington counties

Erin Benson, Director of Workforce Services
207-991-0580 ebenson@emdc.org

Aroostook County Action Program (ACAP)- serving Aroostook county

Kathy Williams, Program Supervisor
207-554-4137 kwilliams@acap-me.org

Goodwill Workforce Solutions (WFS) – serving Cumberland, Knox, Lincoln, Sagadahoc, Waldo, and York counties

David Wurm, Director of Workforce Services
207-615-7845 David.Wurm@goodwillme.org

- Maine Jobs Recovery Plan (MJRP) Career Exploration Update
 - Strong partnership between DOE, DECD and DOL
 - Connecting High School students to meaningful work experience (paid or credit)/career opportunities (e.g. job shadowing, building interviewing skills, etc.)
 - Legislation required distribution of funds to JMG
 - JMG will provide support to High School ELO Coordinators (existing and new)
 - JMG expanding work in 90 High Schools
 - Programming coordinated with Vocational Rehabilitation programming in schools and WIOA services

- DOE releasing a Request for Applications to high schools to build or expand extended learning opportunities and career exploration programming
- Developing a Career Exploration Badge for HS students recognized by businesses and higher education institutions
- Children’s Cabinet Career Exploration Pilot Grants
 - Request for applications-grants for programming for youth in foster care, are homeless, juvenile justice system involved, low income, of color and/or with disabilities
 - Target youth ages 16-24
 - Support community organizations to work with historically disadvantaged or under-represented youth and connect them to career exploration and meaningful work experience programming
 - Provide mentoring, job readiness programming and support to employers

Question from Director Pingree

- How do we spread the word about these RFA?
 - Children’s Cabinet staff can help to spread the word through their networks. Will be shared through DOE newsroom. Will share with youth serving organizations, CAP association and others.

Question from Commissioner Lambrew

- What’s the timing?
 - JMG and DOL will engage students during summer; some staff training
 - Most engagement will be in September

Next meeting

Tuesday, May 17th 10:30-11:30am

School Based Health Center Expansion

Children's Cabinet Presentation

Sarah Squirrell, MS

Senior Advisor, School Based Health
Office of the Commissioner
Department of Health and Human
Services

Sarah.Squirrell@maine.gov

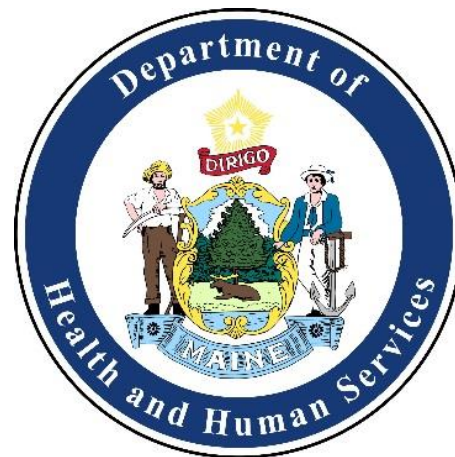
Mary Herman, Ed.M.

Special Projects
Office of the Commissioner
Department of Education
Mary.Herman@maine.gov

Sheila Nelson, MPH, MSW

Program Manager
Maine CDC
Department of Health and
Human Services

Sheila.nelson@maine.gov



New SBHC Funding

- **\$2.4M Department of Education ESSER American Rescue Plan (ARP) Funds**
 - Funds are generally flexible and can be utilized from March 2021 through September 30th, 2024
- **Potential Funding Distribution**
 - 2-year grants
 - Approximately 12 – 15 new sites



School Based Health – A Key Prevention Strategy

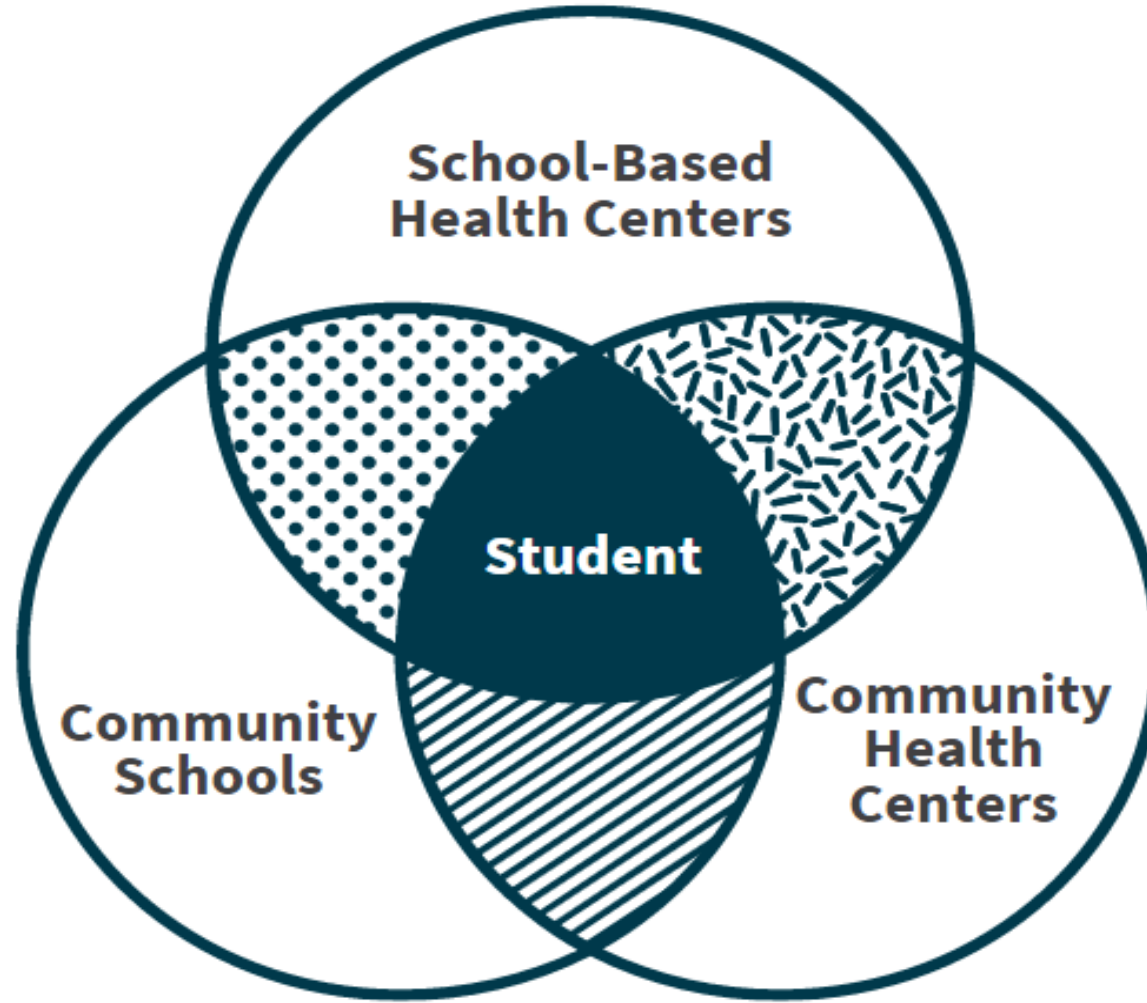


School-Based Health Center Defined

- Shared commitment and collaboration between a school, community and health care organization(s).
- Support students' health, well-being, and academic success by providing integrated medical, behavioral health and prevention services aimed at improving health equity
- Services are student focused and offered to all eligible students regardless of insurance status or ability to pay.
- **Works with existing school services and care providers but does not replace**

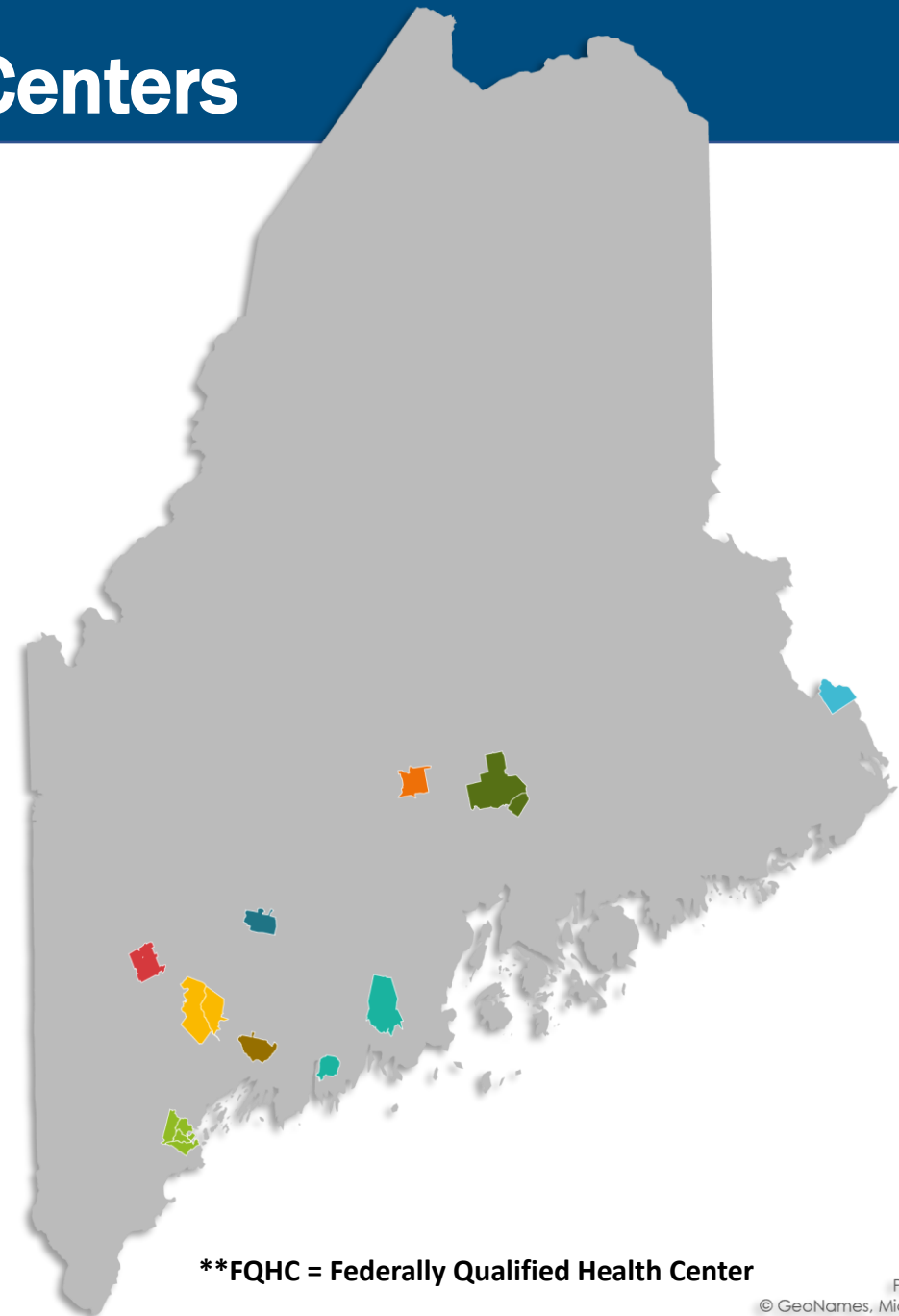


School Based Health Centers and Community Schools



Current Maine School Based Health Centers

	City of Calais (School District Sponsor) <i>Partnering with St. Croix Regional Family Health Center</i>	Calais Middle and High School
	Community Clinical Services* (FQHC** Sponsor) <i>*not operating with state funding</i>	Auburn Middle School Edward Little High School Lewiston High School Lewiston Middle School
	Greater Portland Health (FQHC Sponsor)	Casco Bay High School Deering High School King Middle School Portland High School South Portland High School <i>(new site, 2021-22)</i> Westbrook High School <i>(new site, 2021-22)</i>
	Hometown Health (FQHC sponsor) <i>(new grantee, 2021-22)</i>	Nokomis High School, Newport
	Lincoln Health (Health System Sponsor) <i>(new grantee, 2021-22)</i>	Boothbay High School Medomak Valley High School, Waldoboro
	Western Maine Health Care (Health System Sponsor)	Oxford Hills High School Oxford Hills Middle School
	Maranacook RSU 38 (School District sponsor)	Maranacook Community Schools
	Topsham RSU 75 (School District Sponsor)	Mt. Ararat High School, Topsham
	Penobscot Community Health Care (FQHC Sponsor)	Bangor High School <i>(new site, 2021-22)</i> Brewer Community School Brewer High School



****FQHC = Federally Qualified Health Center**

SBHC Health Care Services Provided

- **Primary Care**
 - ✓ Prevention Services
 - ✓ Acute and chronic Care
 - ✓ Immunizations
 - ✓ Preventative Health Exam
- **Vision Services**
- **Behavioral and mental health**
 - ✓ Screening, assessment, and early intervention
 - ✓ Group and individual counseling
 - ✓ Referrals to specialized medical or behavioral health providers
- **Oral Health Services (optional)**
- **Reproductive Health Services (optional)**



Need for Mental Health Care

- The mental health needs of Maine children and youth and demand for services are at an all-time high
- COVID-19 pandemic has exacerbated existing disparities in access to mental health care
- In the 2020-2021 school year, 77% of reported school-based health center visits were for mental health services
- Maine data indicates increased Emergency Department (ED) utilization for youth and significant ED utilization for suicidal ideation for adolescent females



Healthy Impacts – Health Supports Successful Students



- Improved student health and overall well-being
- Improved school performance and grade promotion
- Decreased absenteeism and improved graduation rates
- Reduced health disparities
- Increased school connectedness
- Reduced emergency room usage
- Promotes integration and collaboration with area healthcare providers
- Demonstrated cost best benefits for our health care system including lower Medicaid costs

SBHC Expansion Priorities

- ✓ To develop NEW SBHC sites across the state with a focus on rural and medically underserved regions
- ✓ To cultivate community partnerships between Healthcare Providers, FQHC's and SAU's
- ✓ To Increase access to healthcare for students of color
- ✓ To Increase access to preventative oral/dental care
- ✓ To strengthen outreach to students, families and the community

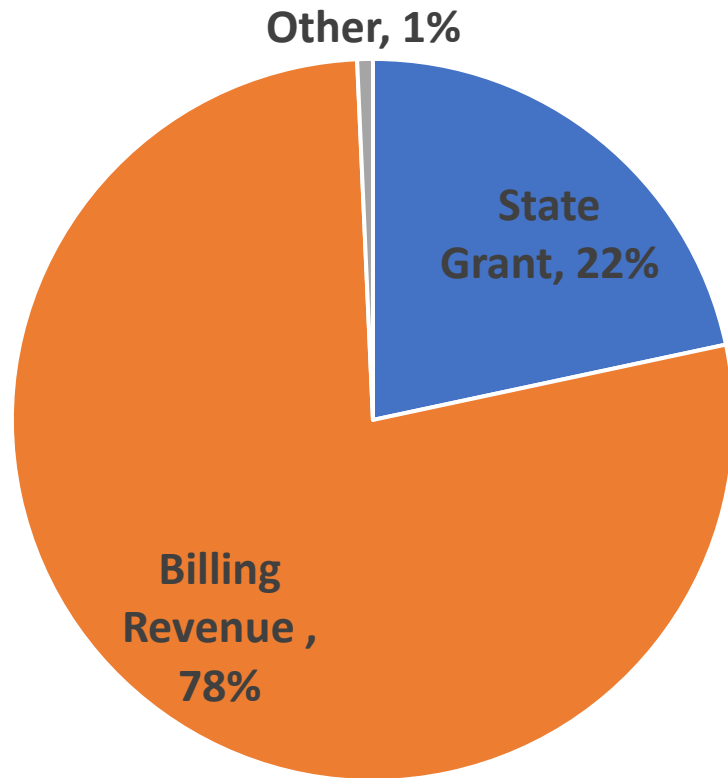


SBHC New Funding Model

Component 1: Base Funding	Component 2: Enhanced Base Funding	Component 3: BOOST Funding
Base budget provided to all sites using current funding formula based on school population and students eligible for free and reduced lunch	Enhanced funding that both new and existing SBHC's can apply for to support planning and outreach, start up costs and coordination	Awarded based on site characteristic <ul style="list-style-type: none">• Rural Site Factor• Equity Factor• Dental Factor
Total Base Funding Range Per Site: \$60,000 - \$78,5000		Total Boost Funding Range Per Site - \$10,000 - \$16,000
Total Approximate Annual Grant Funding: \$60,000 - \$94,500		

School Based Health Center Model

Funding Model – Total Program Budget* \$370K

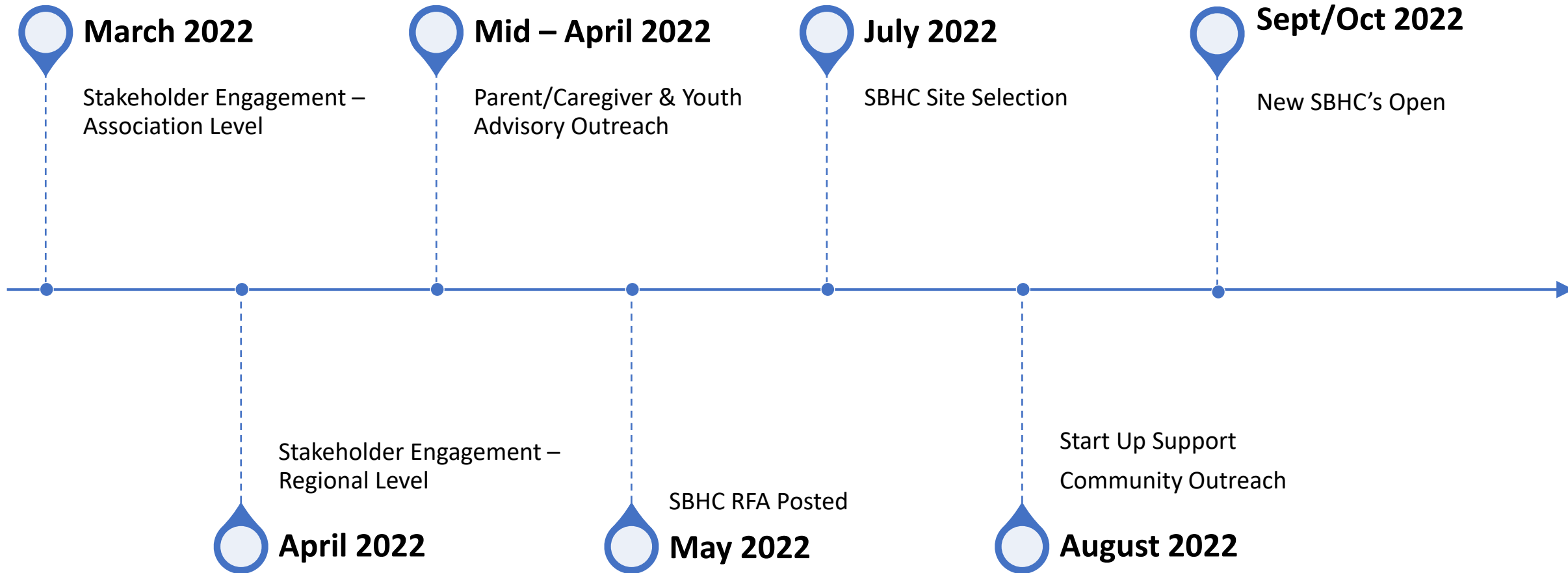


What does State Funding Support?

- Costs for uninsured and underinsured students
- Additional time during visits and preventive health appointments
- Confidential care that may not be billed to insurance
- Clinic coordination, data reporting, and quality improvement activities
- Outreach, start-up cost and coordination
- Dental start-up/equipment costs

**Based on the current State Funding formula for an SBHC providing services in a school with 689 students and 2400 annual encounters*

SBHC Implementation Timeline



Stakeholder Engagement

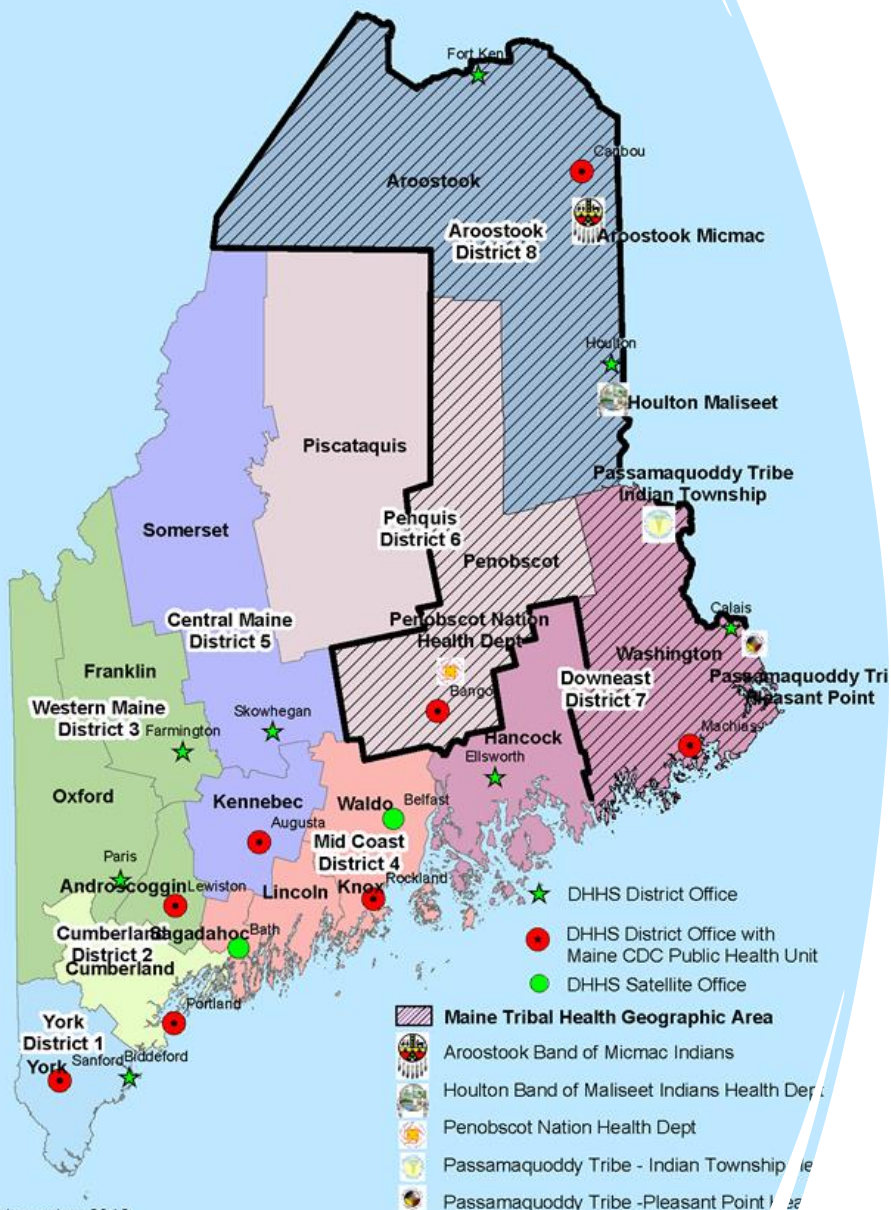
COMPLETED

- ✓ Maine School Management
- ✓ Maine School Board Association
- ✓ Maine Superintendents Assoc.
- ✓ Maine Principals Association
- ✓ Biddeford School District
- ✓ Brewer High School
- ✓ Maine Alliance of MH and Substance Use
- ✓ Maine Hospital Assoc.
- ✓ Northern Light
- ✓ Helping Hands with Heart
- ✓ DOE School Counselors
- ✓ Maine Chapter of AAP
- ✓ Maine Primary Care Association

UPCOMING

- Maine General (4/4)
- Maine Partnership for Oral Health (4/5)
- DOE School Nurses (4/6)
- Maine Association of School Nurses (4/6)
- Special Education Directors (4/7)
- Maine Health (4/11)
- Baileyville Schools (4/14)

Regional Engagement Sessions




- District 1, York County – April 28th
- District 2, Cumberland – April 27th
- District 3, Western Maine – TBS
- District 4, Mid Coast – April 14th
- District 5, Central Maine – TBS
- District 6, Penobscot County – April 26th
- District 6, Piscataquis – TBS
- District 7, Washington County – April 13th
- District 7, Hancock County – April 14th
- District 8, Aroostook – May 4th
- Wabanaki Public Health - TBS

Next Steps

- **Regional Engagement Sessions** – Scheduled April 2022
- **Family and Youth Outreach** – Intentional engagement of youth and parent advisory groups
- **Targeted Outreach** – Tailored outreach to areas of greatest need
- **Request for Applications** – Target Mid-May

A young boy with short dark hair is seen from behind, wearing a red backpack with black straps. He is looking towards a chalkboard filled with math problems, including addition and multiplication. The background is dark, and the chalkboard is the primary source of light. The text 'Final Thoughts?' is overlaid on the left side of the image.

Final Thoughts?

- What opportunities do you see, what might school based health services look like in 10 years?
 - What ideas do you have that would strengthen this work?
- 
- A solid orange horizontal bar is located at the bottom of the page, spanning most of the width.

WORKFORCE DEVELOPMENT FOR YOUTH: DOL PROGRAMMING AND MAINE JOBS AND RECOVERY PLAN CAREER EXPLORATION

Commissioner Laura Fortman

Maine Department of Labor

April 5, 2022

Children's Cabinet Meeting

MJRP FUNDS WILL INCREASE MAINE APPRENTICESHIP PROGRAM REACH, EXPANDING OPPORTUNITY TO KEY SECTORS & COMMUNITIES

Current success story

- On December 30, 2021, Somerset Career and Technical Center (SCTC) became **the first CTE in the state to sponsor apprenticeship**, partnering with Sheridan Construction
- Allows students enrolled in the Residential Construction program at SCTC to complete an apprenticeship during their second year of the program.
- Two CTE students enrolled in program thus far
- “All of this adds up to Sheridan Construction and SCTC being able to **introduce the youth of the Somerset County Region to the culture and lifestyle of a trades career close to home** which will provide an opportunity for students to seek local, well-paying employment after high school.”—Recruitment Manager, Sheridan Construction

How MJRP funds will scale success

- Approach: \$12 M from ARPA & federal grants to award in grants to businesses, associations, unions, CBOs, education providers to expand & create new apprenticeship & pre-apprenticeship--**\$3M of this exclusively for youth apprenticeship**
- Key sectors: Hospitality, clean energy, healthcare, building trades, manufacturing, education, retail, agriculture & forestry
- Priority communities: Young adults (16-24), rural, BIPOC, women, disability, justice-involved, individuals w/o college degree, & older adults (55+)
- Progress: Application is closed; currently reviewing grant proposals with announcement later this month

BUREAU OF REHABILITATION SERVICES YOUTH EMPLOYMENT SERVICES

These services are provided through the Division of Vocational Rehabilitation (DVR) and Division for the Blind and Visually Impaired (DBVI)

- Every school in Maine has an assigned Vocational Rehabilitation Counselor
- Over 6,000 youth with disabilities received VR services last year
- Emphasis is placed upon work-based learning in year-round programming

BRS YOUTH EMPLOYMENT SERVICES

SUMMER 2022 CAREER DEVELOPMENT OPPORTUNITIES

- DVR is working with over 70 schools to offer paid work experiences to approximately 200 youth with disabilities
- Step Up - Pre-college University of Maine residential experience for students with an Autism Spectrum label
- Bus Tours of Maine's community colleges and universities for high school students with disabilities
- LIFE Camp – DBVI residential program that includes job exploration and workplace readiness activities
- Robotics Academy – Blind and visually impaired students build a Bot in a week!
- No Barriers – Experiential program at Bryant Pond for visually impaired youth focused on self-advocacy, empowerment and relationship building

ELIGIBILITY FOR WIOA TITLE IB YOUTH PROGRAMS

In-School

- Aged 14-21 attending High-School or College
- Low Income, and one or more of the following barriers:
 - Basic skills deficient
 - English language learner
 - Justice involved
 - Homeless or runaway
 - In or aged out of foster care
 - Pregnant or parenting
 - Youth with a disability
 - Youth who requires additional assistance per local board policy (i.e.: youth with incarcerated parent, youth with family with SUD)

Out-of-School

- Aged 16-24, not attending high-school or college and has one or more of the following barriers:
 - High school drop out
 - High school graduate or equivalent who is low income and basic skills deficient
 - Justice involved
 - Homeless or runaway
 - In or aged out of foster care
 - Pregnant or parenting
 - Youth with a disability
 - Low income and requires additional assistance per local board policy (i.e.: youth with incarcerated parent, youth with family with SUD)

TITLE IB YOUTH SERVICES

- Comprehensive assessment
- Career exploration and guidance
- Connection to non-career counseling and supports
- Preparation for transition to postsecondary education
- Support Services (clothing, transportation, childcare, driver's education, and more).
- Tutoring, study skills, drop-out prevention
- Paid work experience
- Occupational skill training for high-demand occupations
- Leadership development
- Financial literacy
- Entrepreneurial skills

RECRUITING YOUTH NOW – CALLING FOR REFERRALS

- Service providers are currently recruiting both in-school and out-of-school youth for current and summer programming.
 - Most youth attend a Youth Academy – a youth cohort that covers work readiness, career exploration, financial literacy, and other services from the previous slide.
 - Includes a paid work experience (WEX) which varies in length from four to eight weeks or longer.
- 3 Service Providers Statewide
 - Eastern Maine Development Corporation (EMDC) - serving Androscoggin, Franklin, Hancock, Kennebec, Oxford, Piscataquis, Penobscot, Somerset, and Washington counties
 - Aroostook County Action Program (ACAP)- serving Aroostook county.
 - Goodwill Workforce Solutions (WFS) – serving Cumberland, Knox, Lincoln, Sagadahoc, Waldo, and York counties

CONTACT INFO FOR REFERRING YOUTH AGES 14-24 TO WIOA

ACAP

Kathy Williams, Program Supervisor

207-554-4137 kwilliams@acap-me.org

EMDC

Erin Benson, Director of Workforce Services

207-991-0580 ebenson@emdc.org

WFS

David Wurm, Director of Workforce Services

207-615-7845 David.Wurm@goodwillnne.org

CAREER EXPLORATION: MEANINGFUL PAID WORK EXPERIENCE FOR YOUTH

Building the Infrastructure for Career Exploration for Maine's High School Students

- Partnership between DOE & JMG with support from DECD and in collaboration with DOL
 - Extended Learning Opportunity/Career Exploration Programming will target Juniors and Seniors in many Maine high schools. Programming will support students to better understand career opportunities, make connections to employers and build foundational and 21st Century skills through meaningful paid and/or credit bearing work experience.
 - In next several days, DOE will release a **request for application** to high schools to build or expand extended learning opportunities and career exploration programming.
 - JMG will provide **coaching, learning management system** and other supports to existing and new High School ELO coordinators. Provide tools and curriculum to strengthen connections for students. Develop a **“Career Exploration” badge** to be recognized by Maine higher education institutions and businesses.
 - JMG will expand work in 90 high schools where they currently have specialists.
 - JMG in partnership with DOE, DOL & DECD will strengthen relationships with employers to develop programming and opportunities for students.
 - Programming will be coordinated with Vocational Rehabilitation programming in schools and WIOA services.

CHILDREN'S CABINET CAREER EXPLORATION PILOT GRANTS

- Soon-to-be-released request for application to support community organizations to work with historically disadvantaged or under-represented youth and connect them to career exploration and meaningful work experience programming. Provide mentoring, job readiness programming and support to employers.
- Grants require programming to be offered to:
 - Youth in foster care;
 - Youth who are homeless;
 - Youth in the juvenile justice system;
 - Youth with low income;
 - Youth of color; and/or
 - Youth with disabilities.



QUESTIONS?