



Renewable Energy Leasing Planning and Analysis

Office of Renewable Energy Programs

February 7, 2022



Overview

- **What is BOEM and what do we do?**
- **Leasing Process Overview**
- **Fisheries Engagement**
- **Environmental Studies**



Outer Continental Shelf (OCS) Energy

OCS Lands Act: "... vital national resource ... expeditious and orderly development ... environmental safeguards"

Energy Policy Act of 2005: "... energy from sources other than oil and gas ..."

BOEM is the **lead federal agency** for leasing and oversight/regulation of offshore wind, but other federal agencies are involved in the process (NOAA, USFWS, NPS, DOD, USCG, BSEE).

Alaska OCS



Pacific OCS



Gulf of Mexico OCS



Atlantic OCS



Renewable Energy Program by the Numbers



Competitive Lease Sales Completed:

8

Active Commercial Offshore Leases Issued:

18

Active Research Offshore Leases Issued:

2

Site Assessment Plans (SAPs) Approved:

14

General Activities Plans Approved:

1

Construction and Operations Plans (COPs):

- Approved in 2021

2

- Under Review

12

- Anticipated within Next 12 Months

5

Guidance:

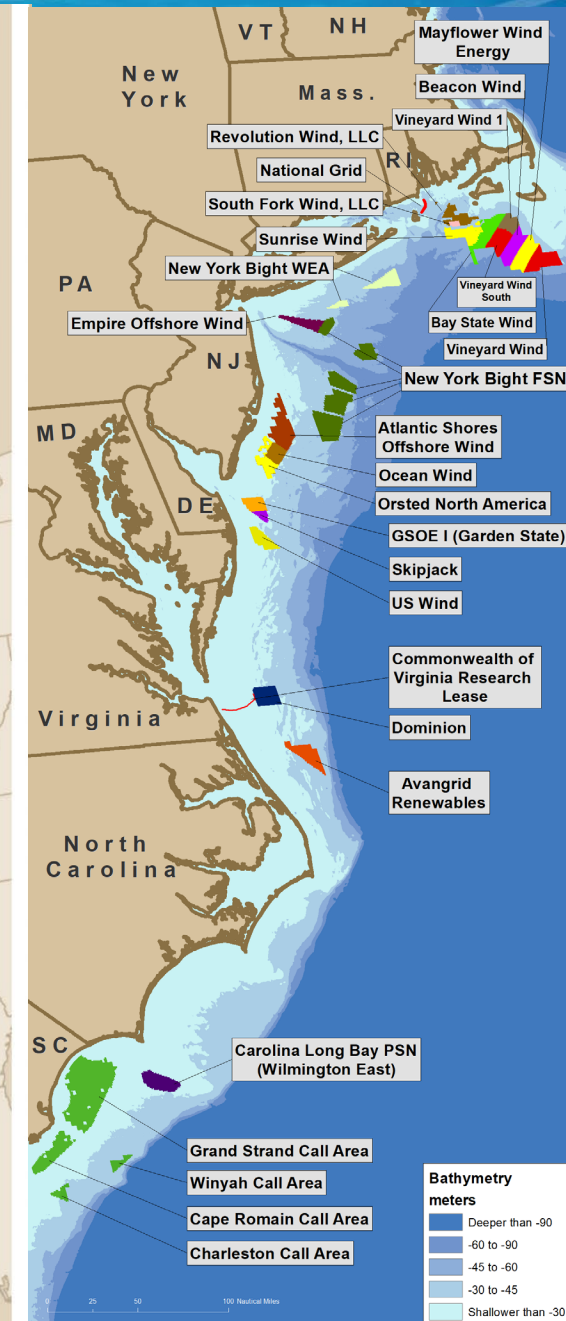
11

Leasing Under Consideration:

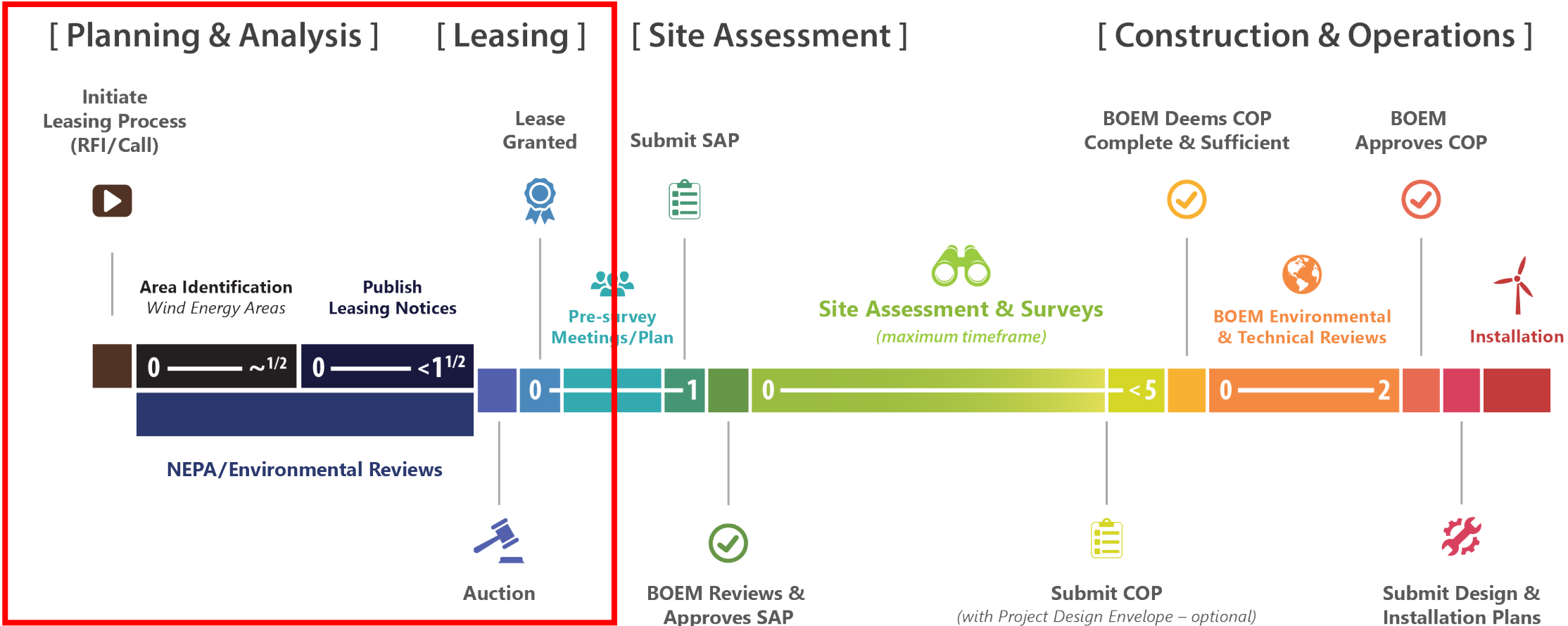
7

Steel in the Federal Waters:

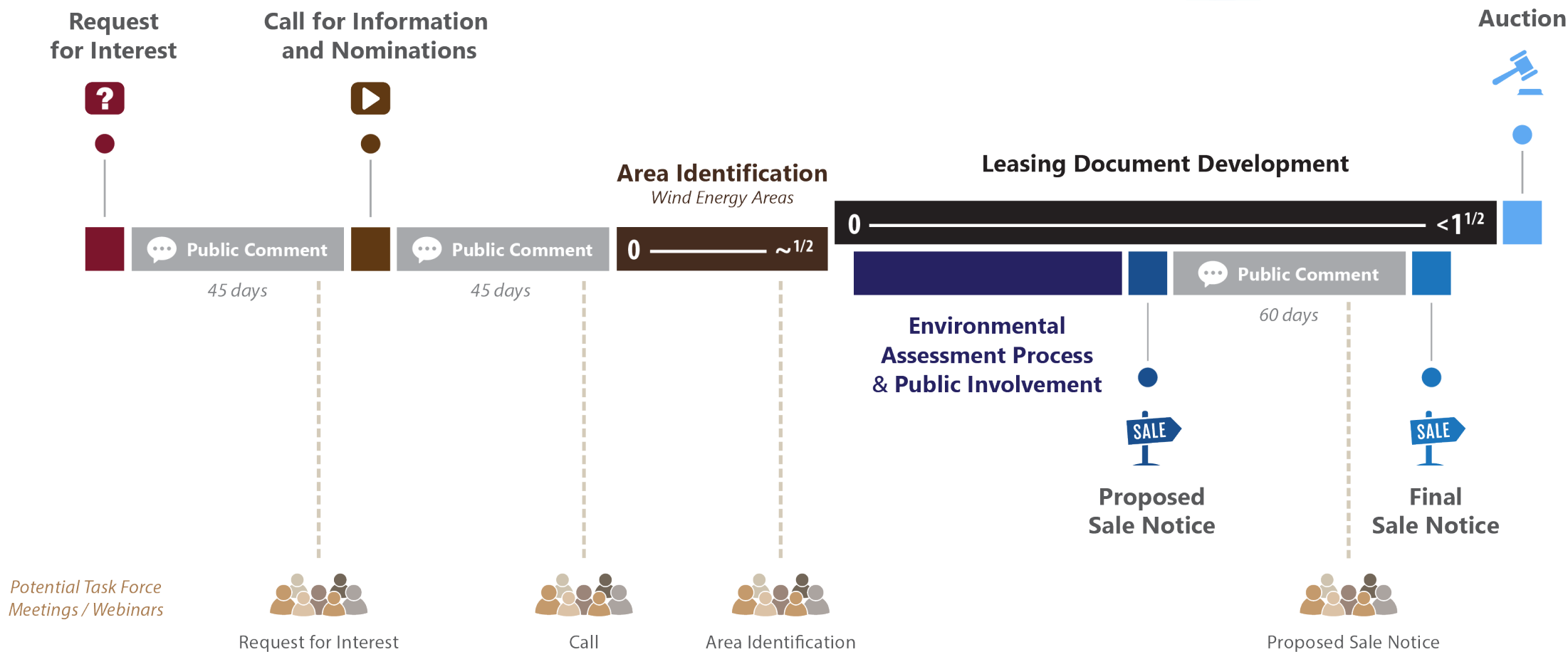
2020



Renewable Energy Process: From RFI/Call to Operation

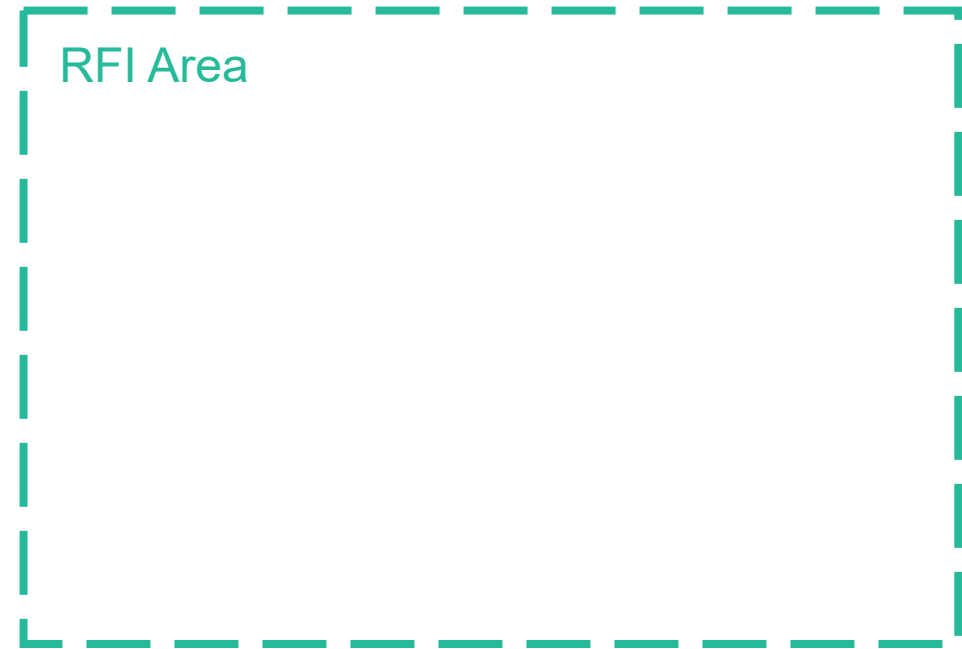


Request for Interest to Lease Sale



Request for Interest (RFI) Area

- Collect information to determine the level of interest in offshore wind leasing
- Shed more light on suitability of area for wind development



— — — Optional ——— Required

Call for Information and Nominations - Area

Request comments on:

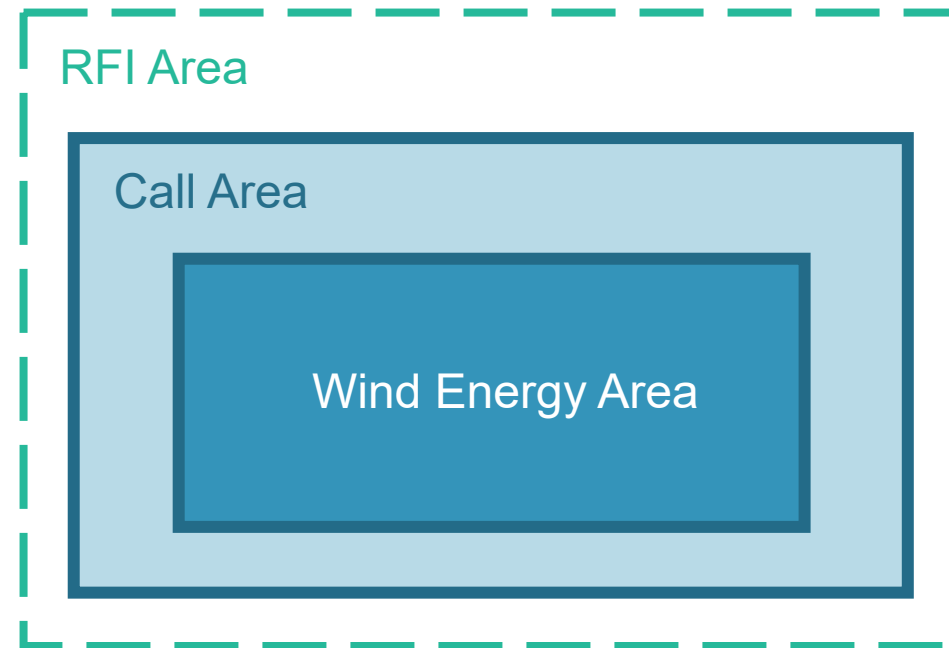
- Areas for special consideration and analysis
- Conditions in the Call Area
- Areas to be considered for leasing



— — — Optional ————— Required

Wind Energy Area

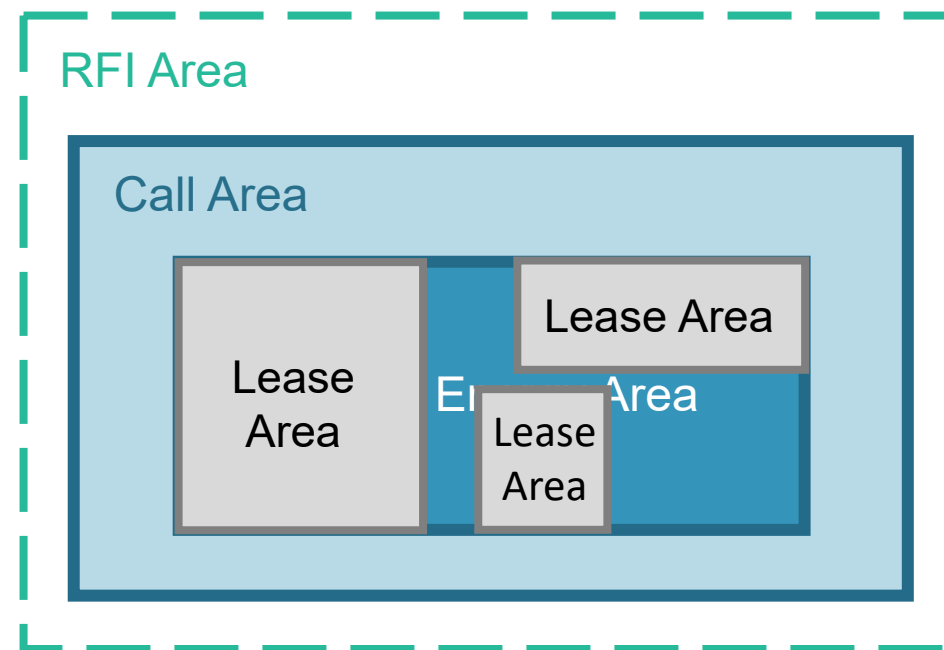
- A portion of the Outer Continental Shelf (OCS) identified by BOEM for NEPA analysis (Environmental Assessment)
- The basis for a Lease Area



— — — Optional — — — Required

Lease Areas

- Wind Energy Areas have the potential for further division into Lease Areas

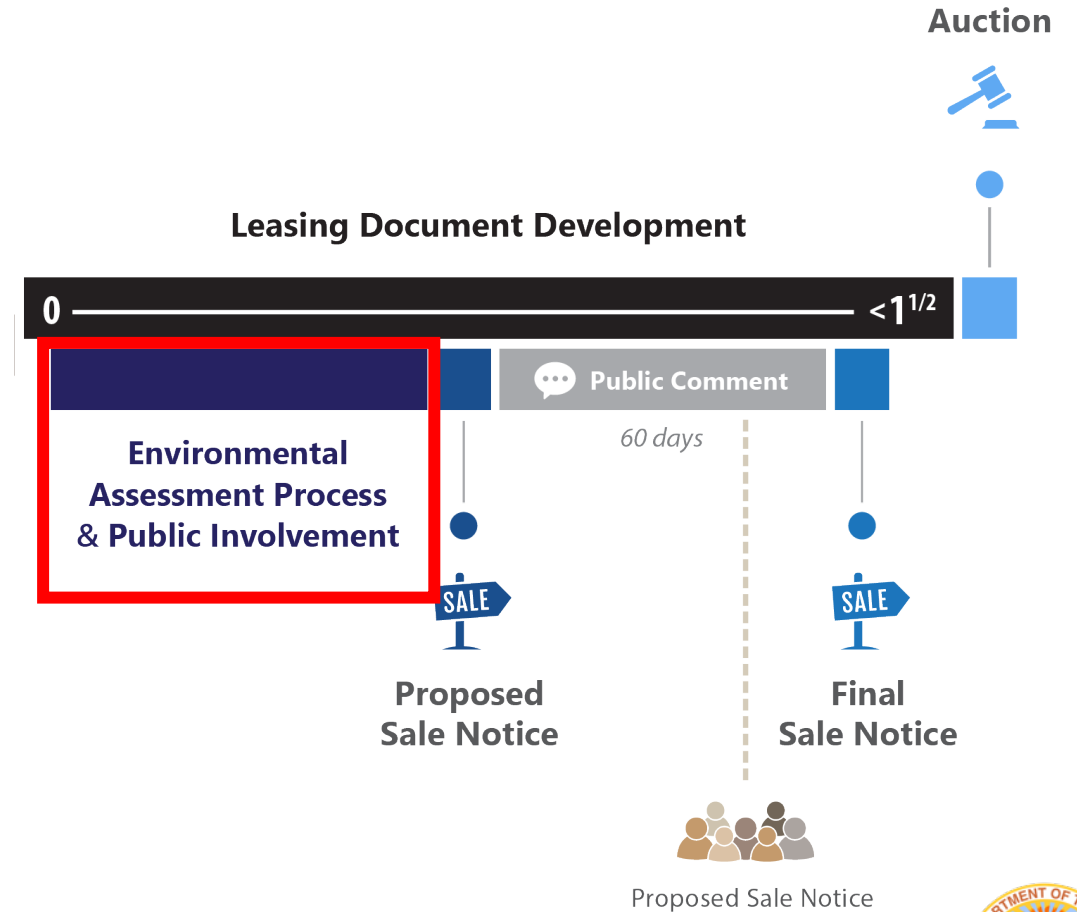


— — — Optional ————— Required

Environmental Assessment

Assesses Environmental Effects Associated with Leasing

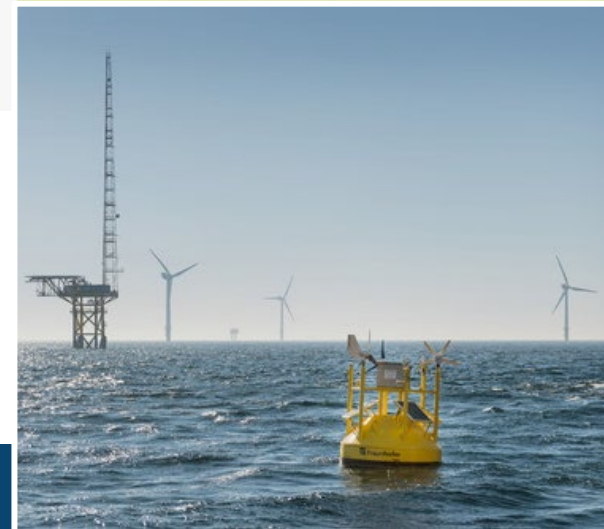
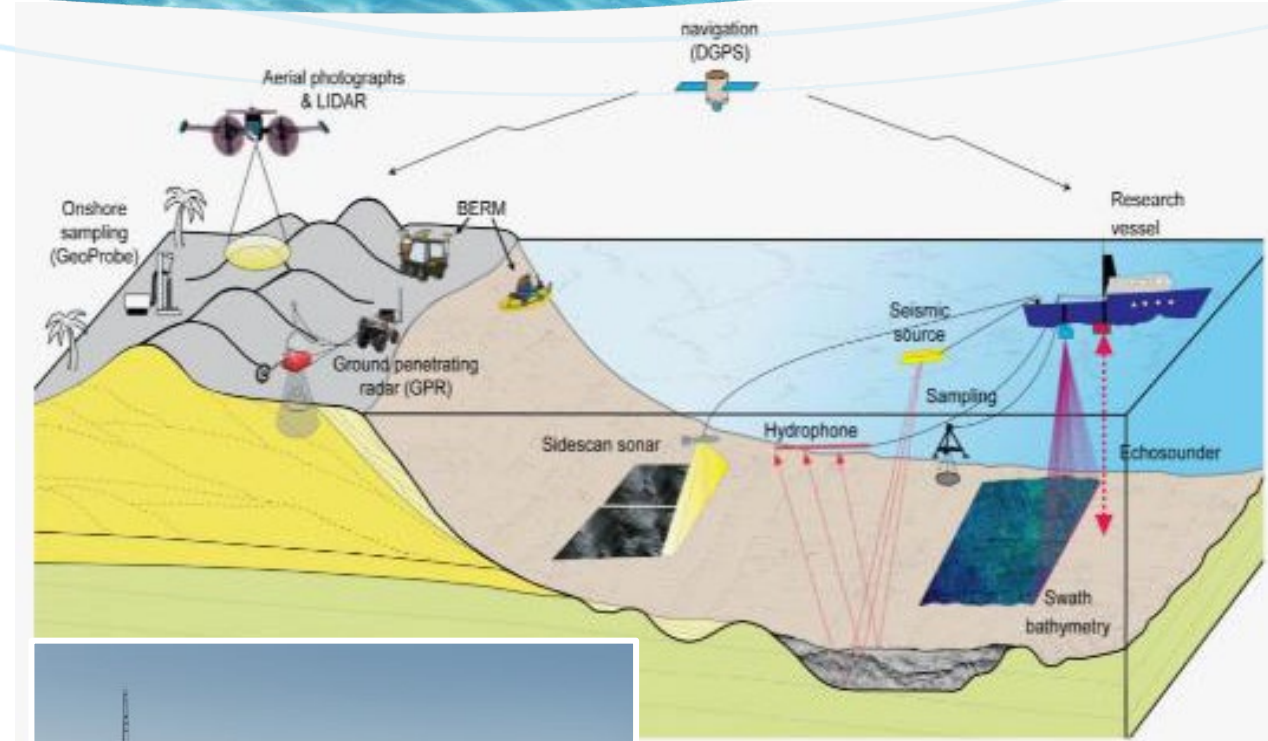
- Site Characterization Activities
 - biological, geological, geotechnical, and archaeological surveys
- Site Assessment Activities
 - meteorological and oceanographic buoy deployment



Environmental Assessment

Assesses Environmental Effects Associated with Leasing

- Site Characterization Activities
 - biological, geological, geotechnical, and archaeological surveys
- Site Assessment Activities
 - meteorological and oceanographic buoy deployment



Pre-Lease Sale Process: Proposed Sale Notice

What is in a PSN?

- Area for leasing
- Fiscal terms
- Auction details and format
- Proposed lease terms
- Last opportunity to submit company qualification materials
 - Legal
 - Technical
 - Financial



Pre-Lease Sale Process: Final Sale Notice

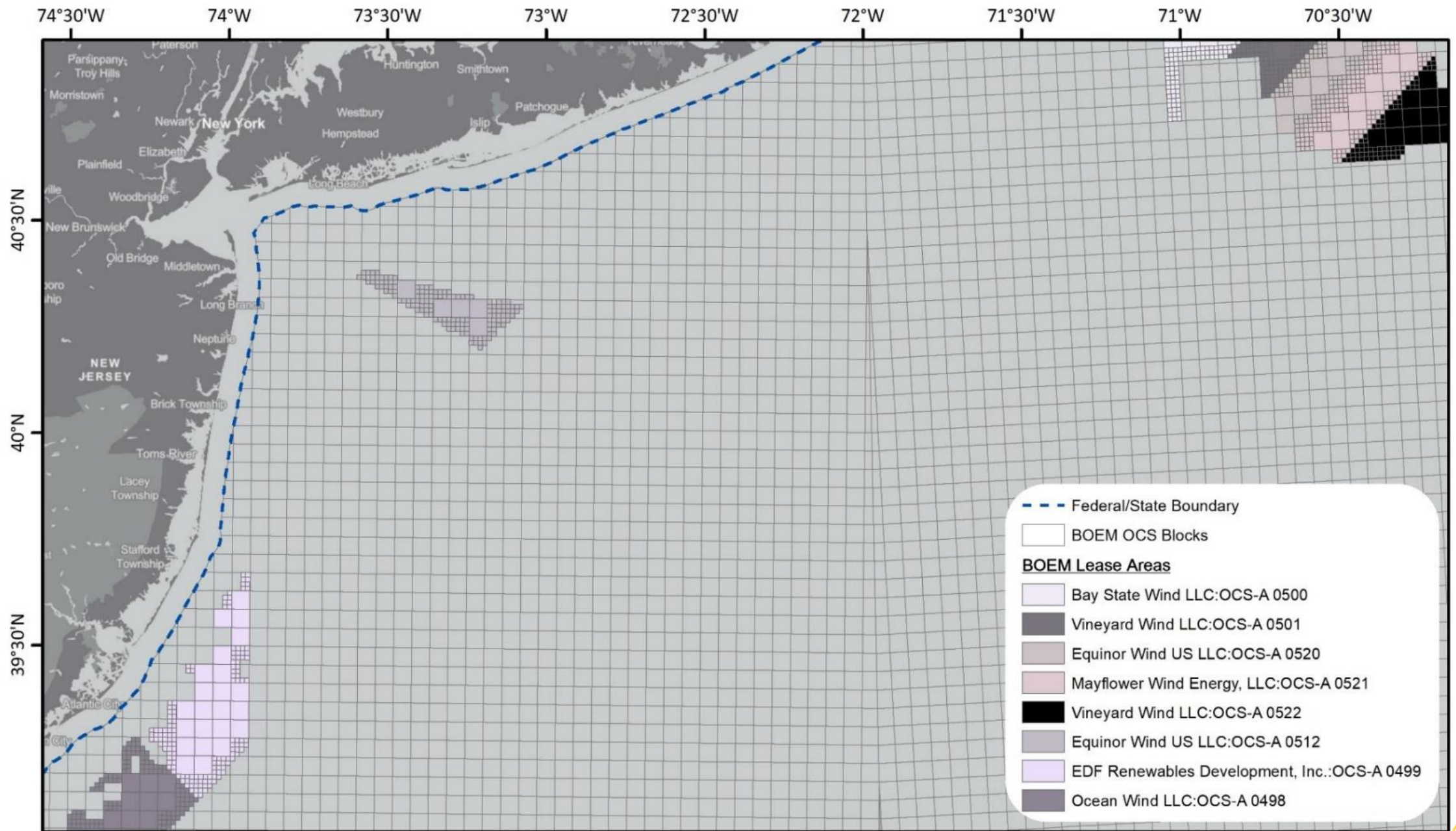
Final Sale Notice

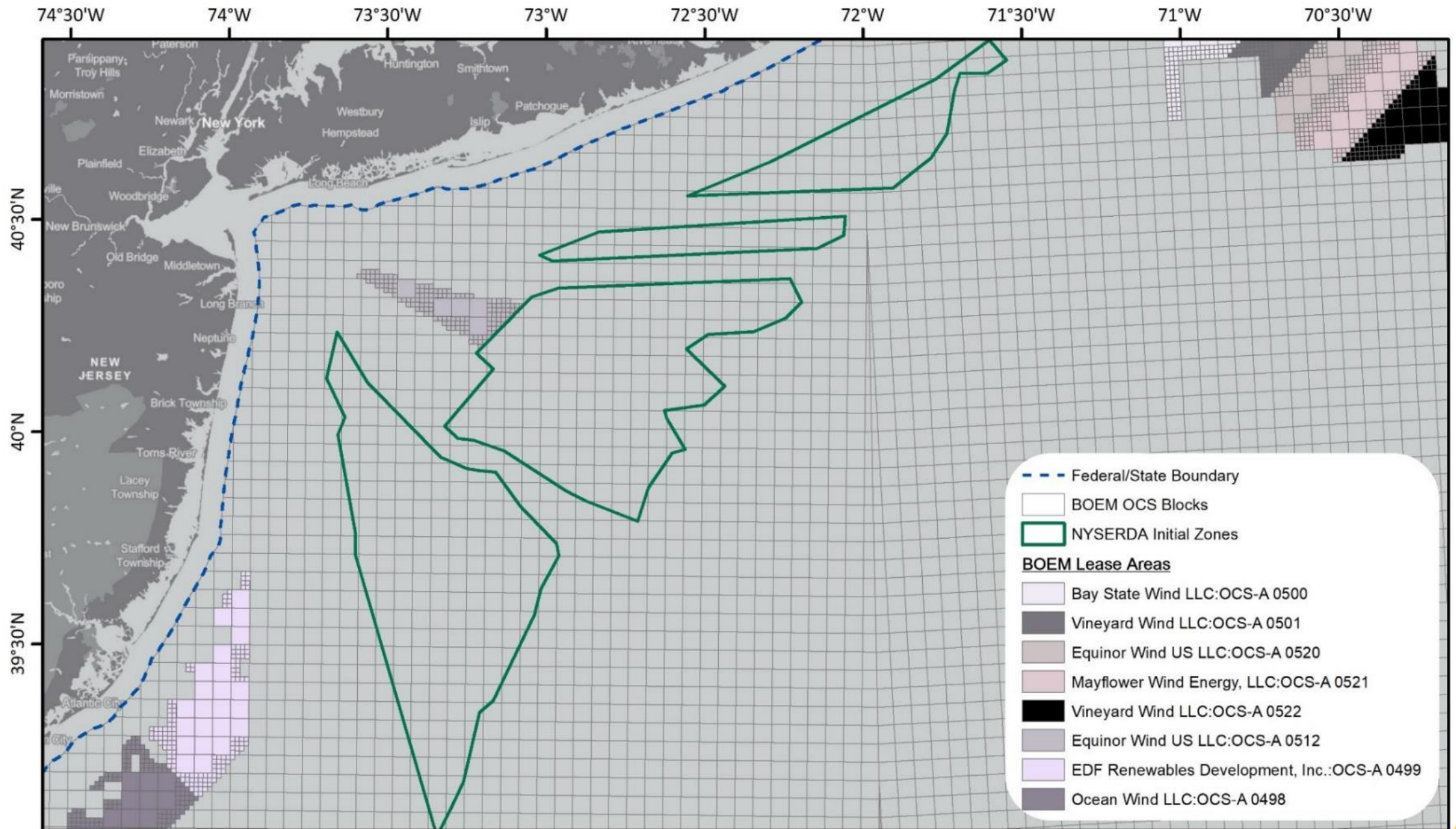
- Final Lease areas and terms
- Bid deposit required to participate in auction
- List of qualified bidders

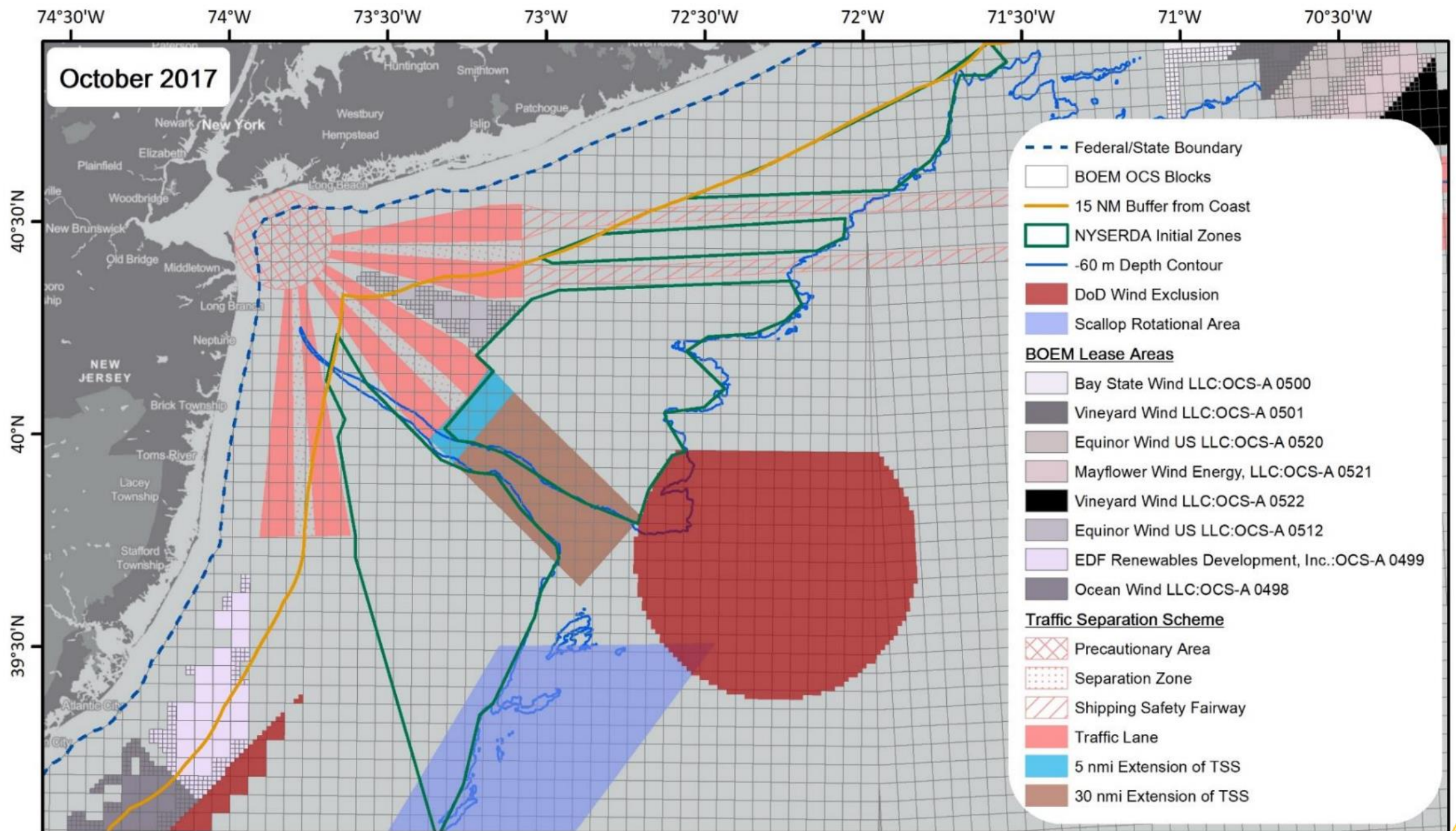
Mock Auction

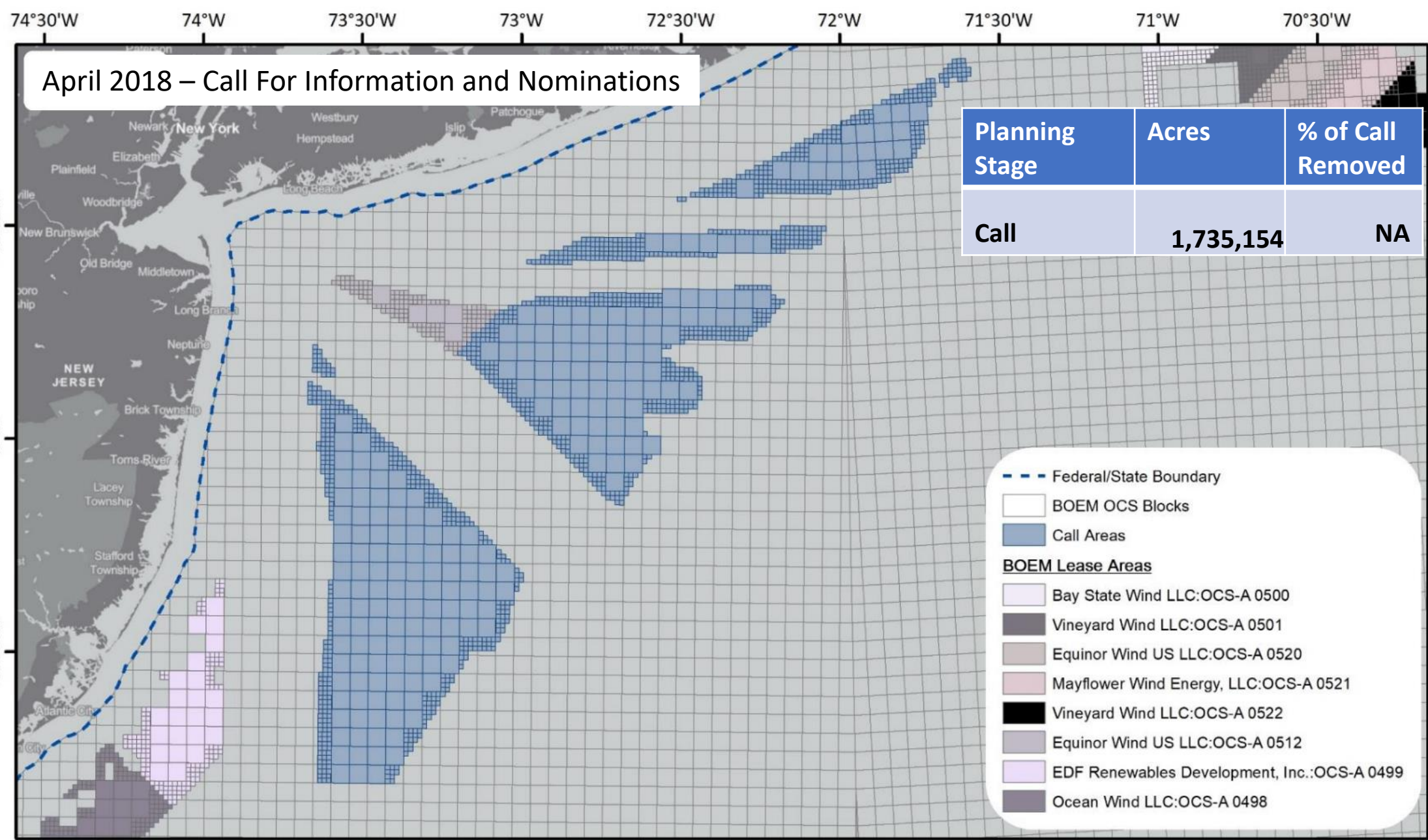
Auction

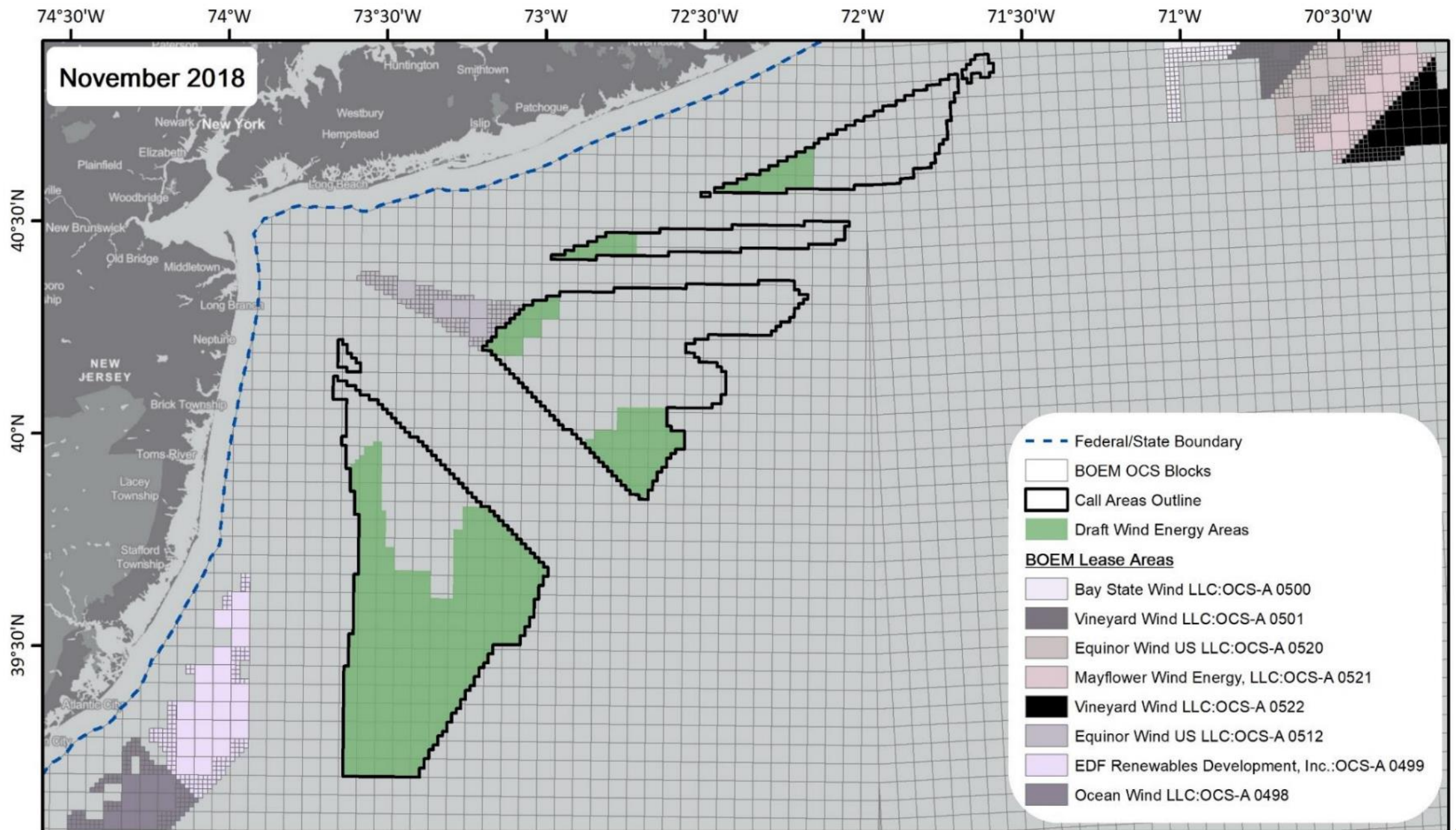


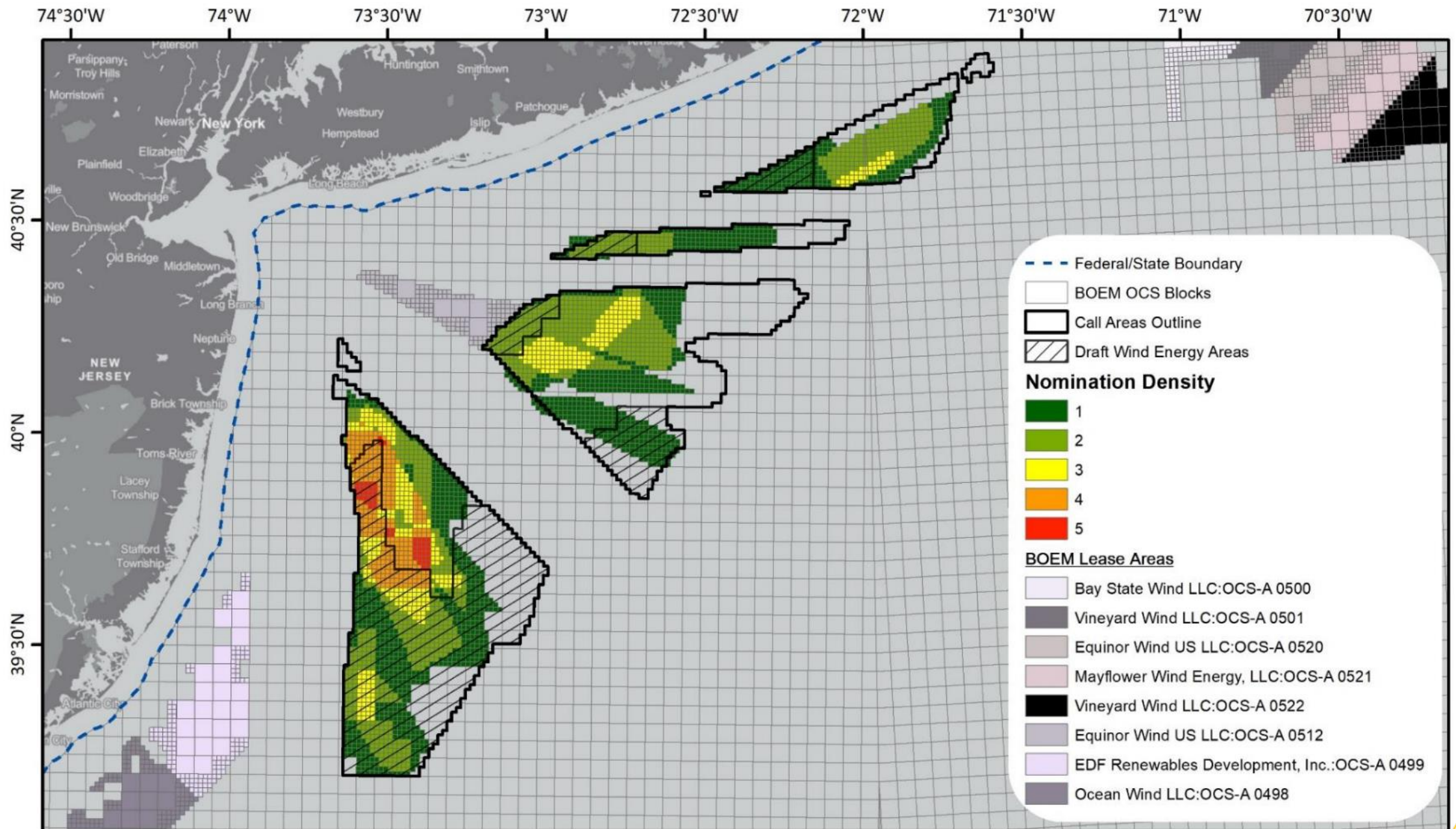


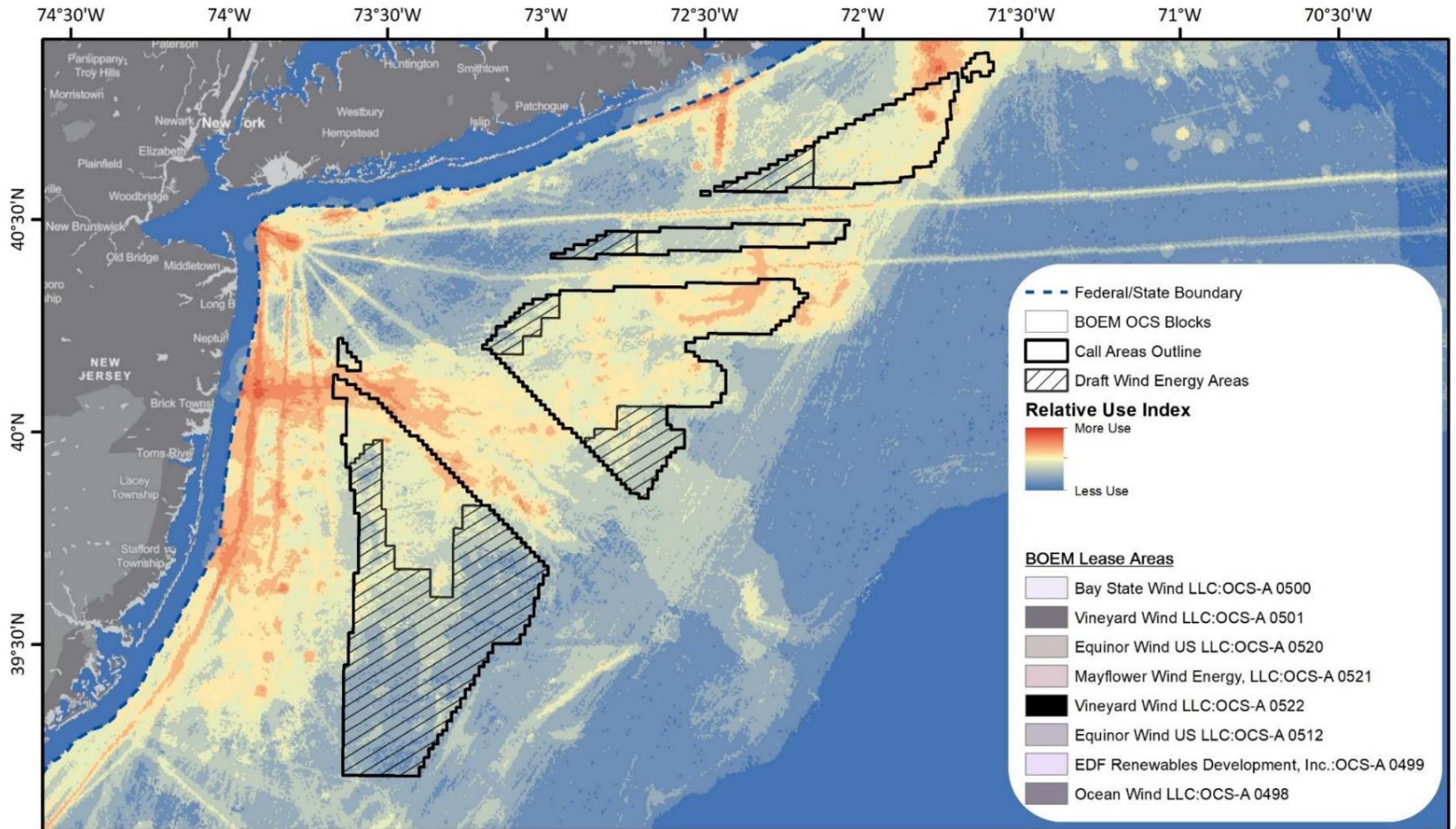


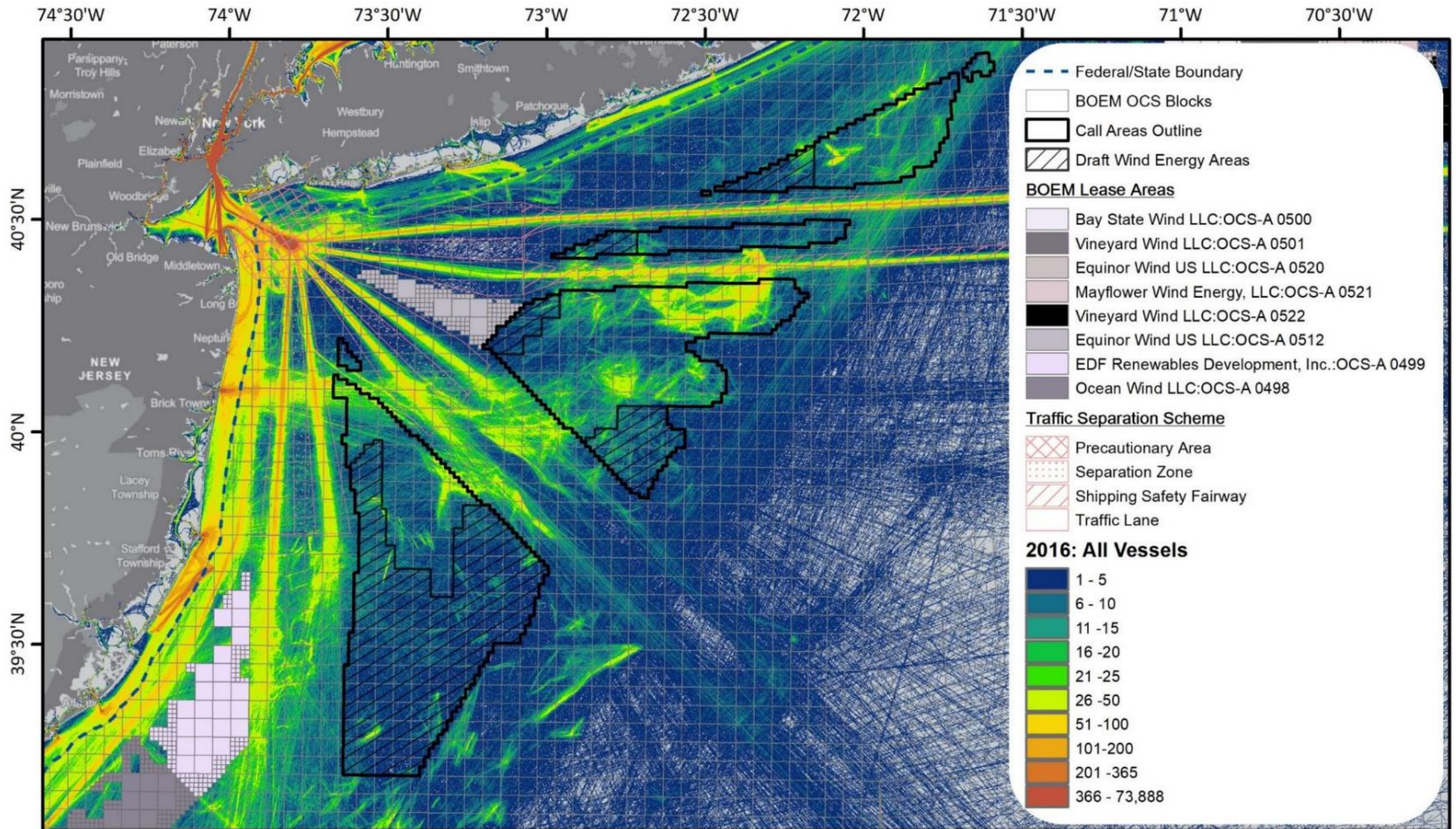


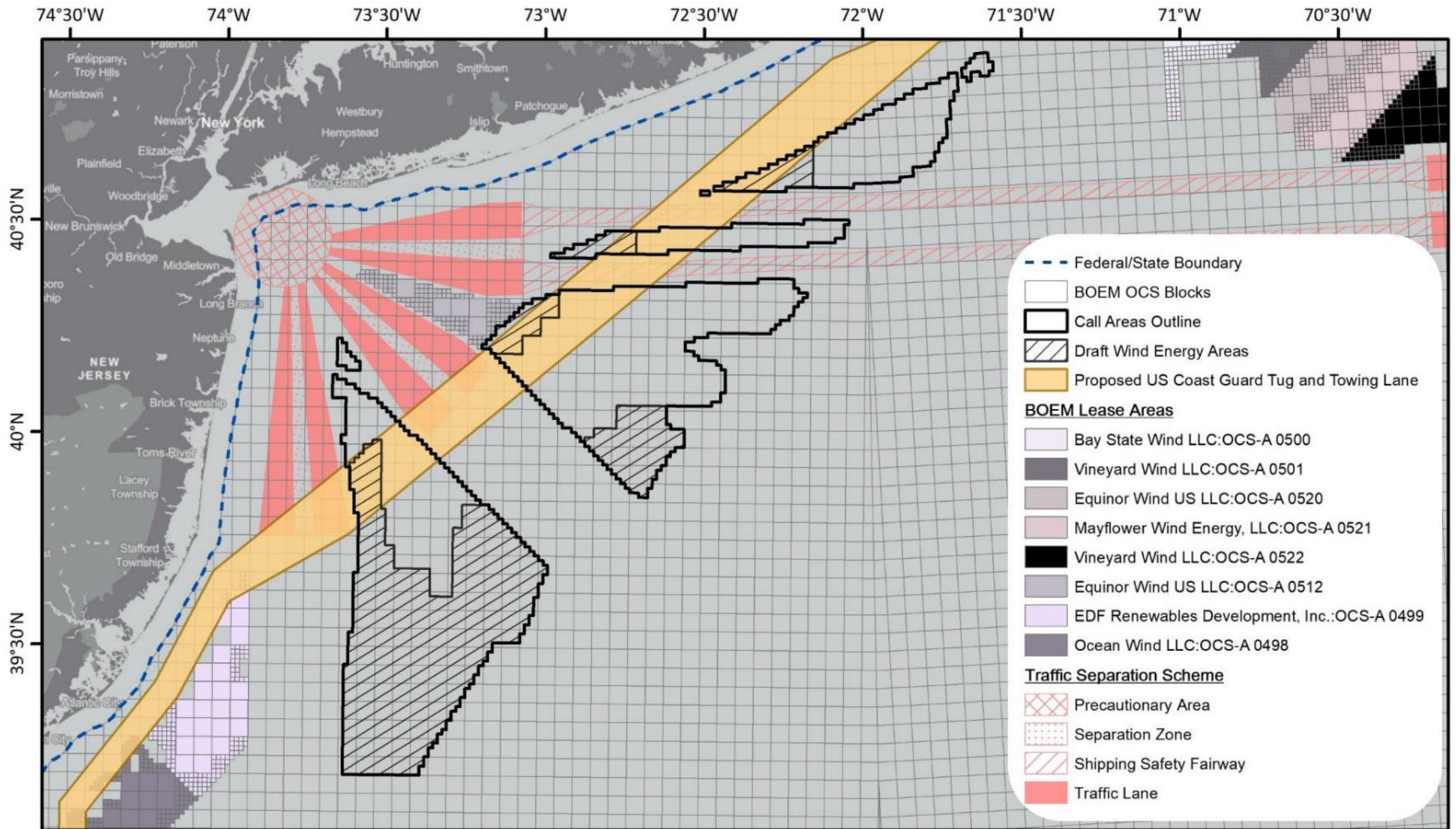


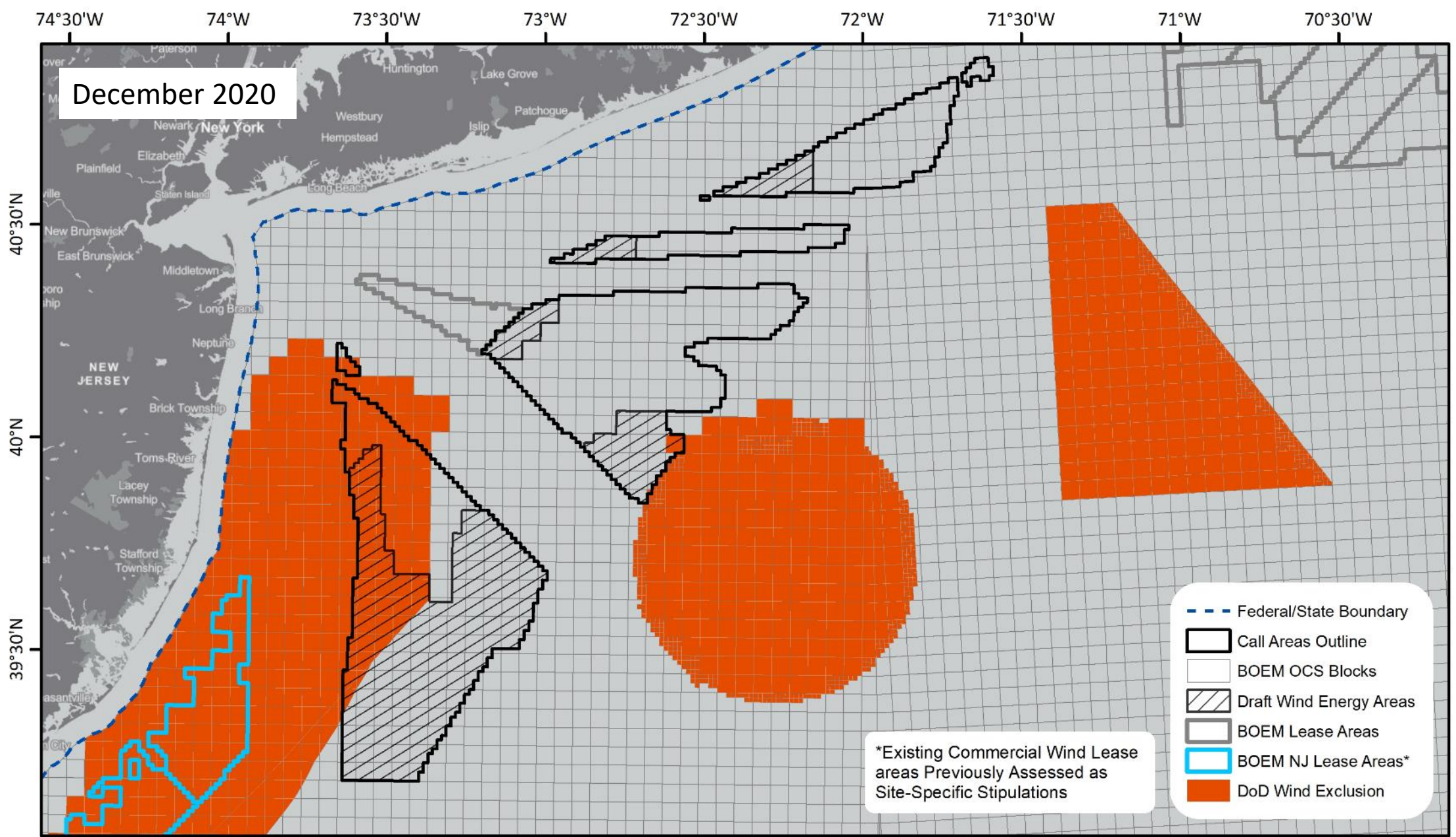


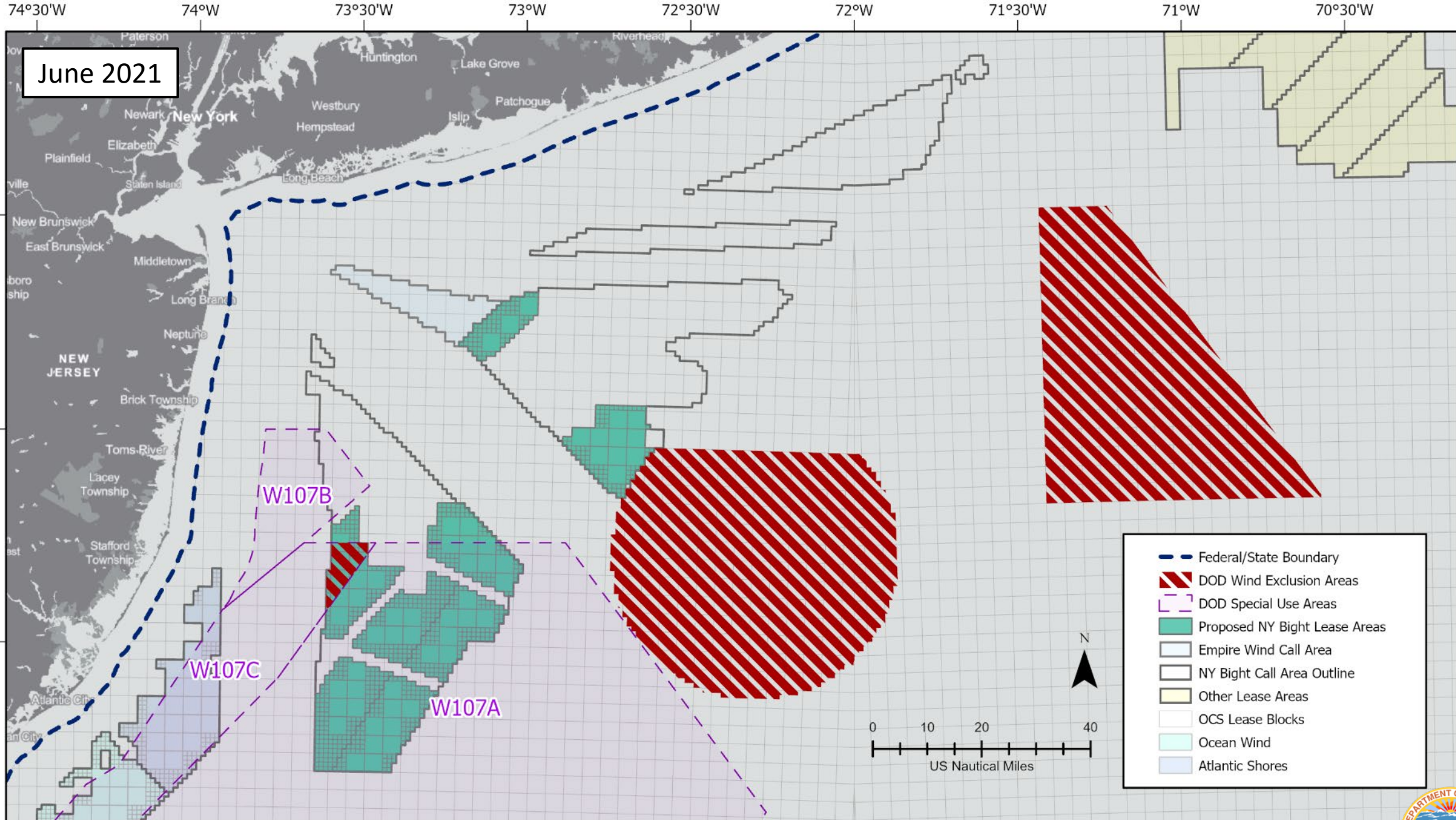


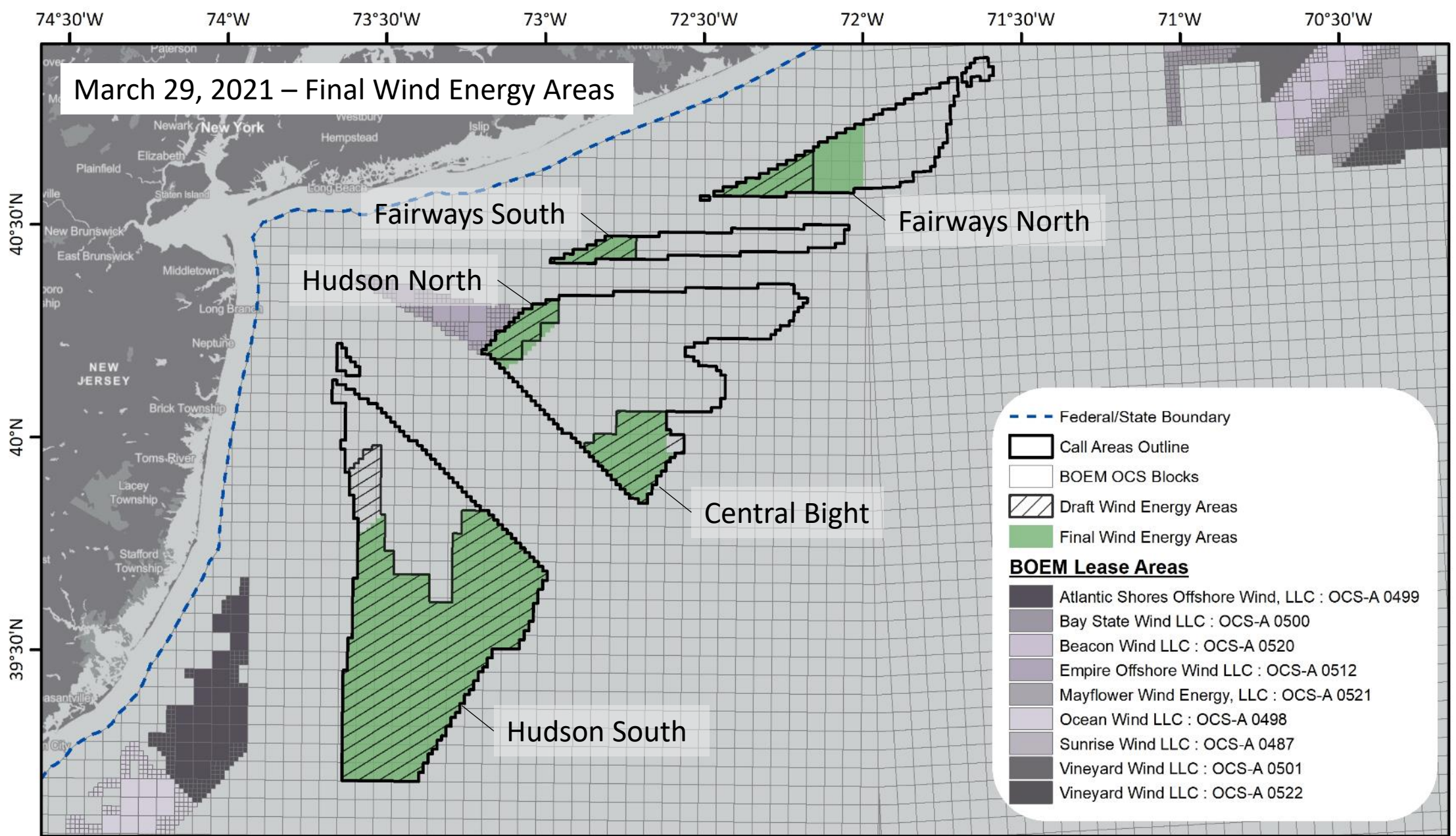


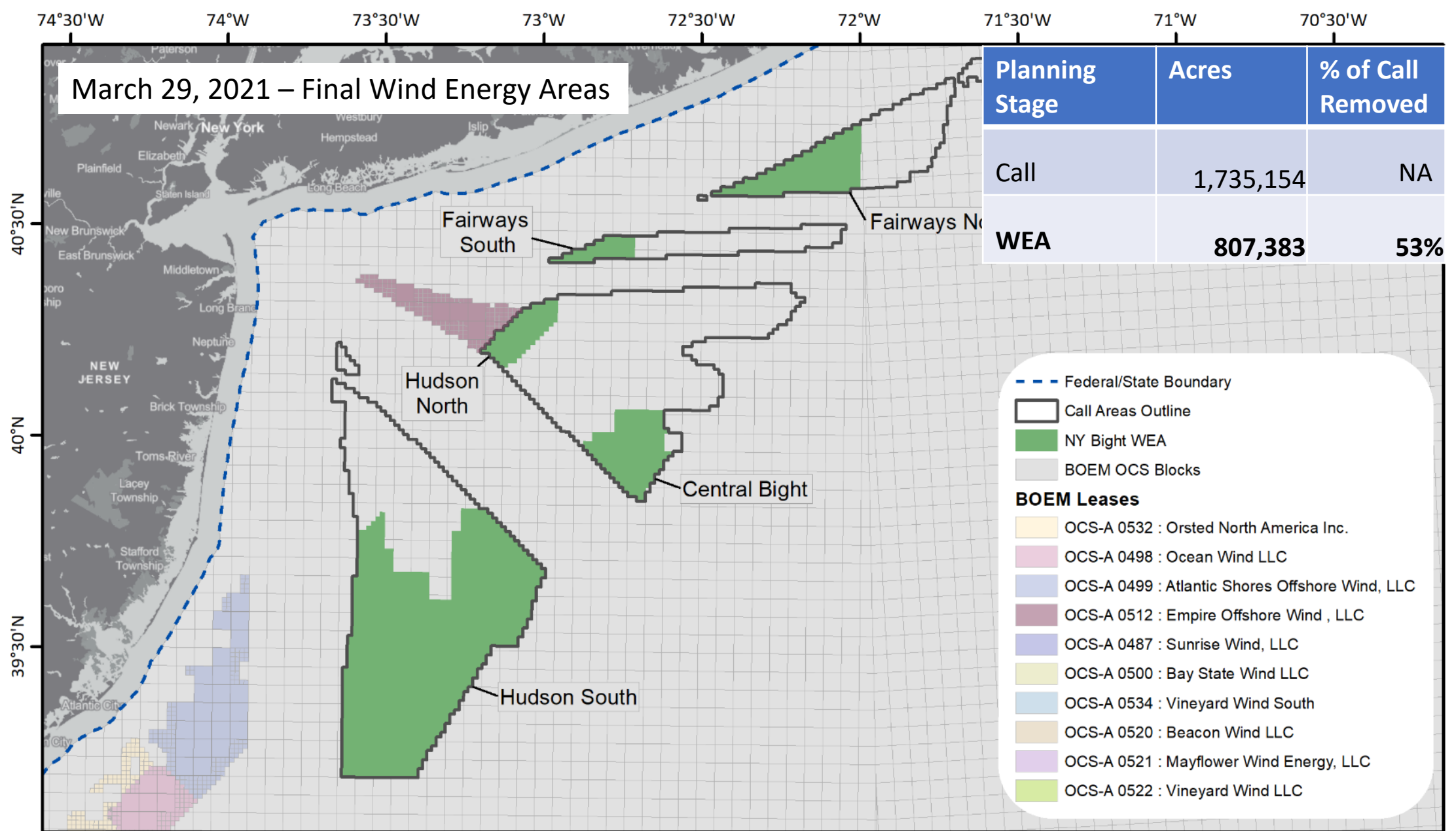








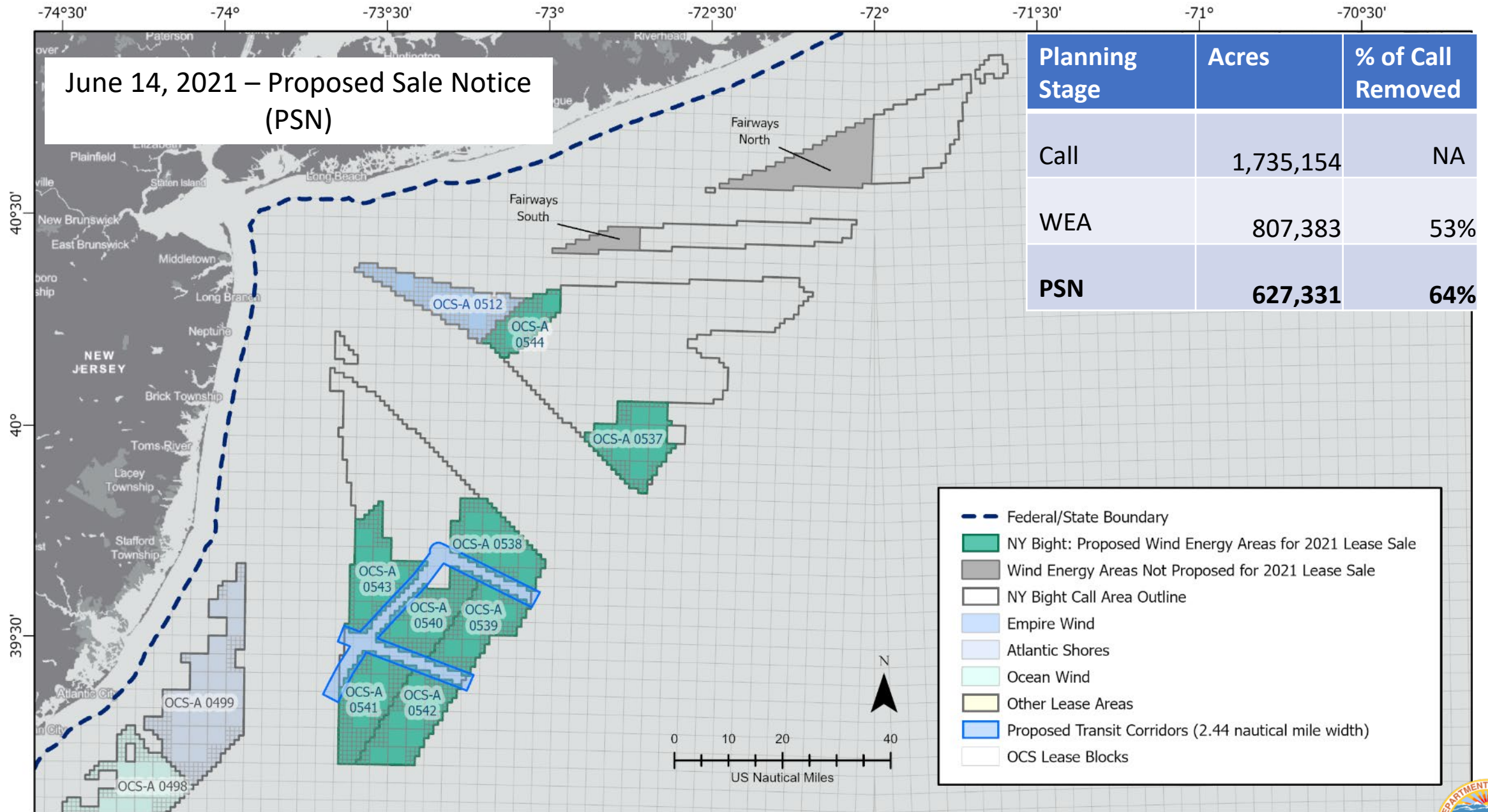


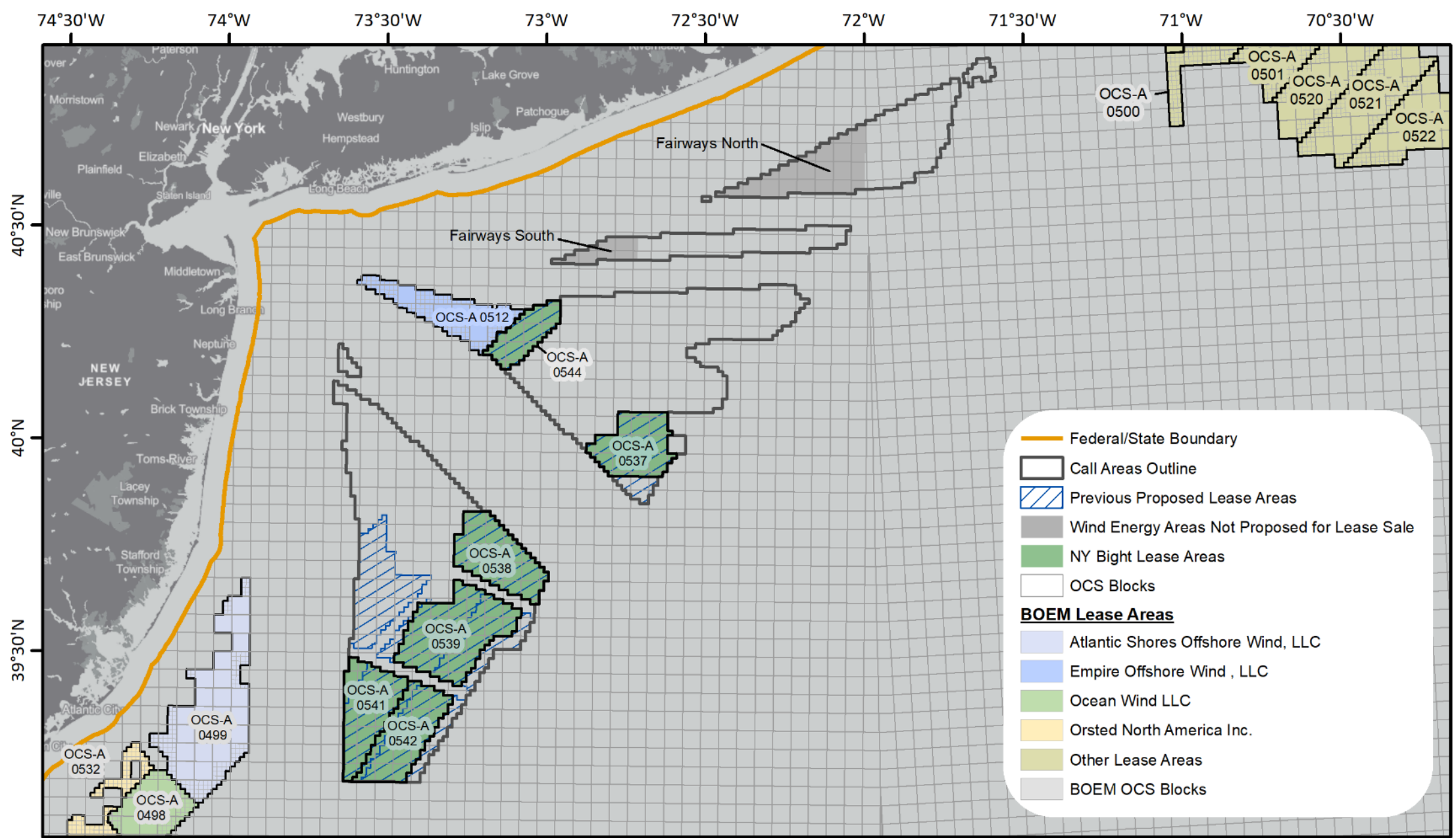


OREP-2021-1056

June 14, 2021 – Proposed Sale Notice (PSN)

Planning Stage	Acres	% of Call Removed
Call	1,735,154	NA
WEA	807,383	53%
PSN	627,331	64%

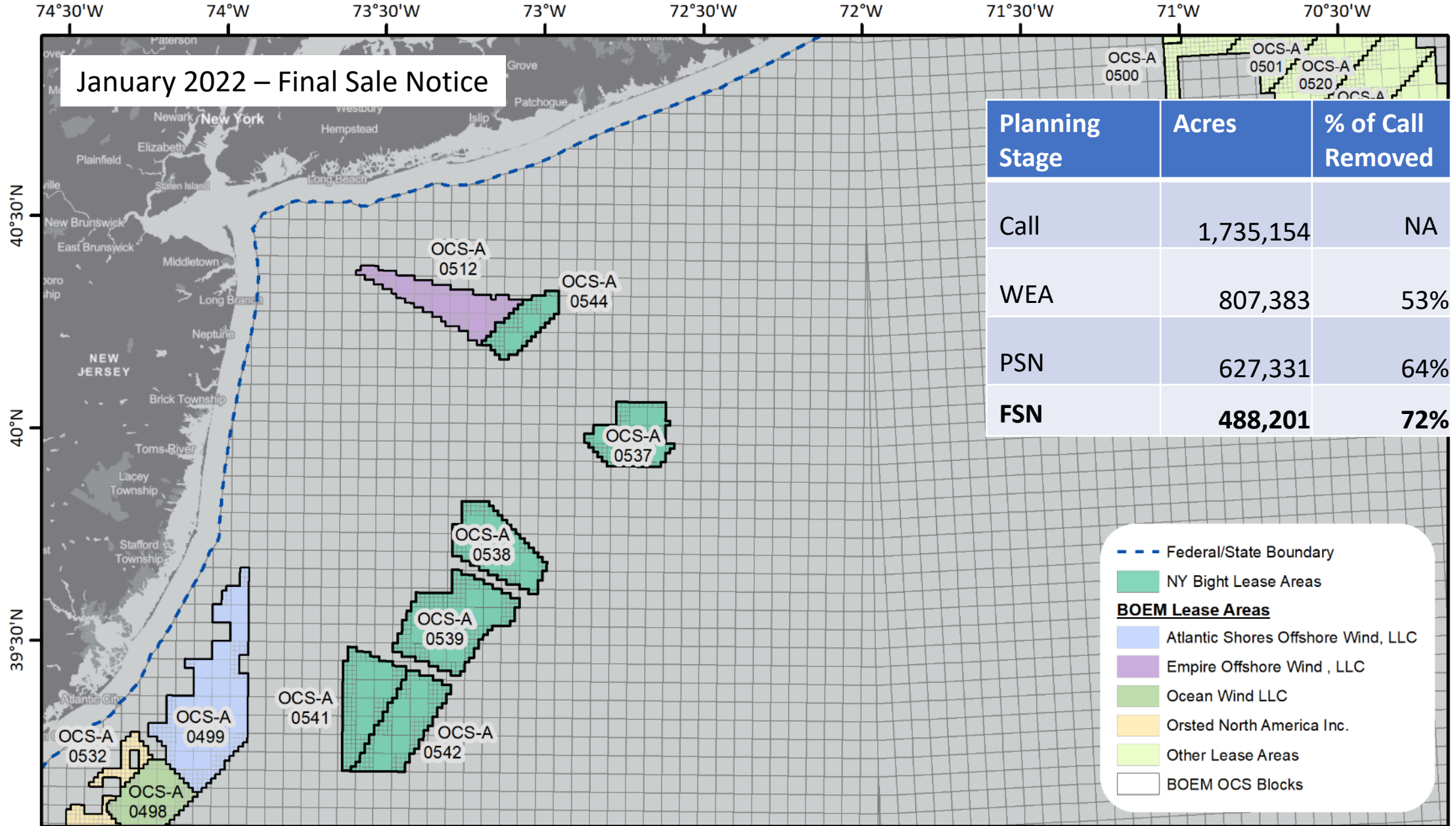




OREP-2021-1049

January 2022 – Final Sale Notice

Planning Stage	Acres	% of Call Removed
Call	1,735,154	NA
WEA	807,383	53%
PSN	627,331	64%
FSN	488,201	72%



OREP-2021-1049



New Lease Stipulations: Overview

- **Enhanced Engagement**

- Progress Report

- Communication Plans
 - Coordinated Engagement
 - Transmission Planning

- **Project Labor Agreements**

- **Domestic Supply Chain**





New Lease Stipulations: Project Labor Agreements

- The Lessee must make every reasonable effort to enter a **Project Labor Agreement(s)** (PLA) covering the construction stage of any project proposed for the leased area.



New Lease Stipulations: Supply Chain

1. Requirement to establish a **statement of goals** that describe plans for contributing to the creation of a robust and resilient U.S.-based offshore wind supply chain.
2. Operating fee credit to incentivize the procurement of offshore wind components in the U.S.



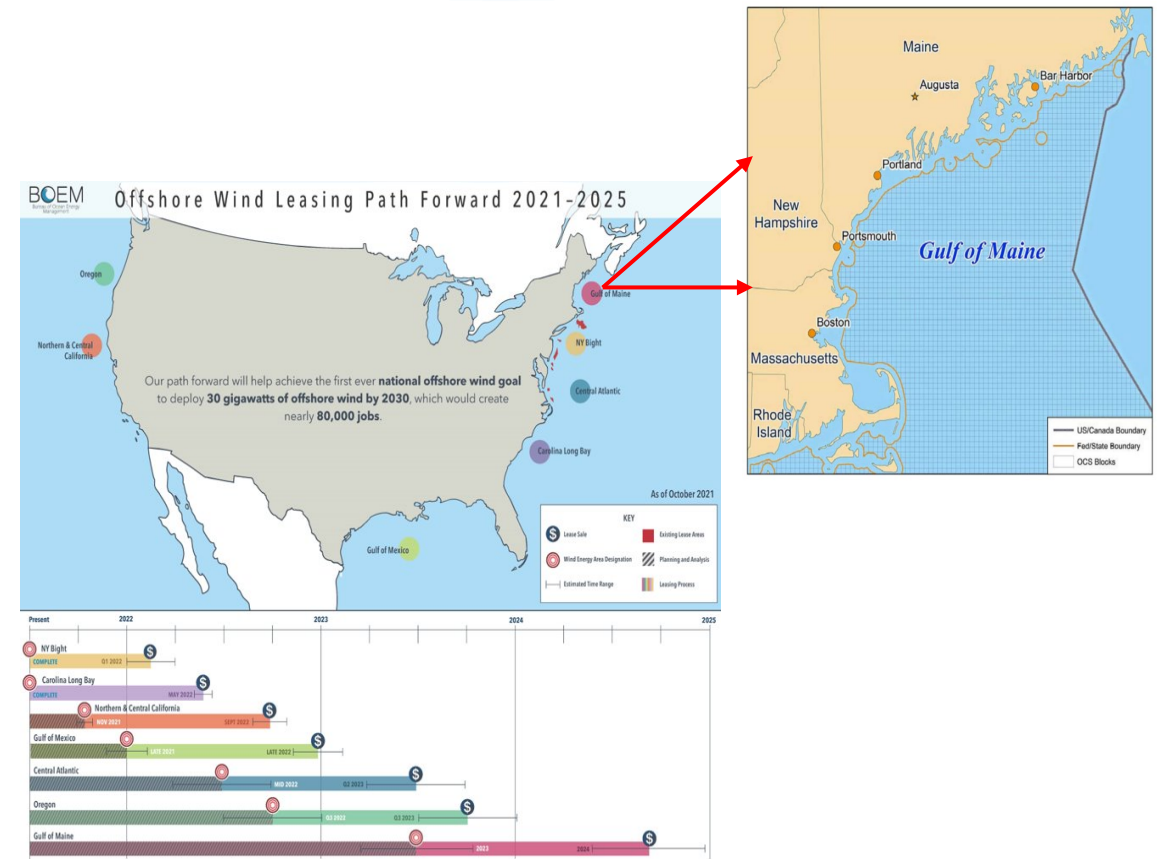
Gulf of Maine: Next Steps

Commercial Leasing

- BOEM Leasing Road Map (2021-2025) set target of holding a lease sale for the Gulf of Maine in 2024.
- Gulf of Maine Task Force last met in December 2019.
- Planning to reconvene the Task Force for a meeting in **Spring 2022**

State of Maine Research Array

- Maine submitted a research lease application (Oct. 2021) for a floating research array in Federal Waters
 - ~25 mi offshore
 - ≤ 12 Floating Turbines (up to 144 MW)
 - 15 Square Miles (~10,000 acres)
- BOEM currently reviewing and processing application



Fisheries Mitigation Guidance Development

Request for Information (Nov. 2021)

- Designed to inform BOEM's development of draft guidance
 - Avoid
 - Minimize
 - If needed, compensate
- BOEM is currently processing the feedback received.

Topic Areas Included in RFI:

- General approach
- Project siting, design, navigation, and access
- Safety measures
- Environmental monitoring plan
- Financial compensation

Fisheries Mitigation Guidance Development: Timeline

Fall/Winter 2021:

- Identify ideas and considerations from the fishing community, offshore wind energy developers, and others to inform the draft guidance. -**COMPLETE**

Early Winter 2022:

- Develop draft guidance considering comments received. -ONGOING
- Work in consultation with NOAA/NMFS, state fishery and coastal management agencies, and technical experts to develop the draft guidance. - ONGOING

Early Spring 2022:

- Publish draft guidance and discuss with constituents.

Summer 2022: Issue final guidance.

<https://www.boem.gov/renewable-energy/request-information-reducing-or-avoiding-impacts-offshore-wind-energy-fisheries>

Environmental Studies – Providing Information

- Extensive environmental studies program established in 1974
- Funds and manages scientific research to inform decision-making process
 - Contracts
 - Cooperative Agreements
 - Interagency Agreements
- Partnering with other Federal Agencies – NOAA, FWS, USGS, DOE, DOD
- Over \$80 million invested to date in Atlantic Renewable Energy Studies



Gulf of Maine Studies

- ✓ Zooplankton Ecology of the Gulf of Maine – ongoing
- ✓ Atlantic Marine Assessment Program for Protected Species – ongoing
- ✓ Ecological Baselines Studies of U.S. Outer Continental Shelf in Gulf of Maine – in procurement
- ✓ A Comprehensive Assessment of Existing Gulf of Maine Ecosystem Data and Identification of Data Gaps to Inform Future Research – planned
- ✓ Gulf of Maine Fishery Physical Habitat and Epibenthic Invertebrate Baseline Data Collection – proposed
- ✓ Gulf of Maine Socio-Economic Impact of OCS Wind Development on Fishing – proposed
- ✓ Baseline Tourism and Recreation along the Gulf of Maine - proposed

Memorandum of Understanding BOEM/NOAA

- Signed by Director Lefton and Undersecretary Spinrad on January 12, 2022
- Commitment from both agencies to work together towards the goal of deploying 30 GW of wind energy by 2030
- Sets forth an umbrella structure for working together and details 11 areas of collaboration emphasizing science and data sharing
- Located here: <https://www.boem.gov/sites/default/files/documents/about-boem/MOU-NOAA-BOEM.pdf>



Bureau of Ocean Energy
Management

BOEM.gov



luke.feinberg@boem.gov | (571) 474-7616 mary.boatman@boem.gov | (703) 787-1662