



Agency Analysis

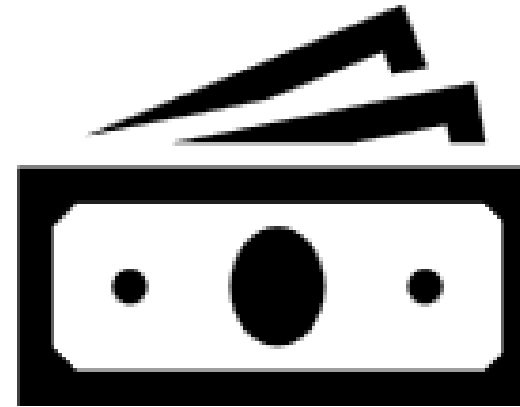
[View in Power BI](#) ↗

Last data refresh:
9/29/2025 7:23:31 PM UTC

Downloaded at:
9/29/2025 7:51:49 PM UTC

The Questions

- Average per capita rates statewide
- The number of services that have closed or opened in the last two years
- Where the current ambulance deserts are
- What regional opportunities exist and seem to be working.



MEDICARE REIMBURSEMENT	BLS EMERGENCY	ALS EMERGENCY
2019 Rural Rate	\$370.53	\$440.00
2024 Rural Rate	\$437.20	\$519.17
Avg Annual Inflation Adjustment	3.60%	3.60%
Medicaid Reimbursement	BLS Emergency	ALS Emergency
2019 Rate	\$230.57	\$273.81
2024 Rate	\$289.24	\$366.30
% of 2024 MediCARE Rate	66.16%	70.55%

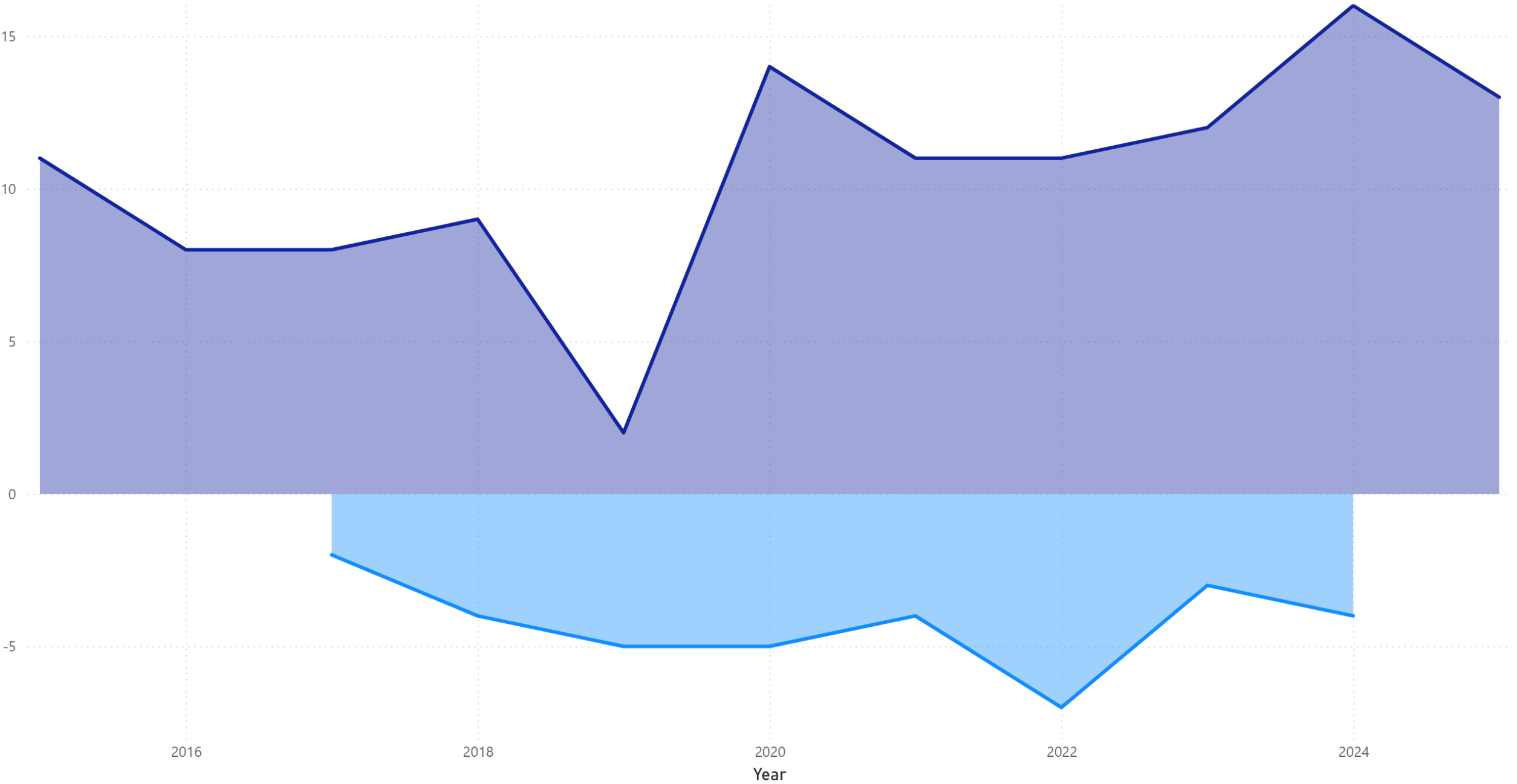
Source AAA 2024 Report, CMS data

Rising Wages			Fuel	Medical Supplies
26%↑ 17%↑			35%↑	12%↑
EMT Paramedic				
Avg. Hourly Wage	EMTs	Paramedics	In the New England (PADD 1A) of the United States, which includes Maine, the average cost of regular gasoline rose from \$2.57 per gallon in 2019 to \$3.47 per gallon in 2023, representing a 35% increase. SOURCE: US ENERGY INFORMATION ADMINISTRATION	EMS agencies report an increase in costs of 12%, on average, for supplies 2019–2022, with no end in sight. SOURCE: NATIONAL ASSOCIATION OF EMTs EMS ECONOMIC & OPERATIONAL MODELS EXECUTIVE SUMMARY Ambulance Chassis costs are also up 25–50% over the same time period.
2021 Rate	\$15.73	\$21.92		
2023 Rate	\$19.87	\$25.73		
EMS faces a chronic staffing shortage as reimbursement shortfalls have not allowed ambulance services to pay emergency medical technicians (EMTs) and paramedics competitive wages. We cannot stop the flow of first responders out of this profession without sustainable funding. SOURCE: DEPARTMENT OF LABOR				
# of EMS Professionals 5,573				
SOURCE: NATIONAL ASSOCIATION OF STATE EMS OFFICIALS				

What is driving costs?

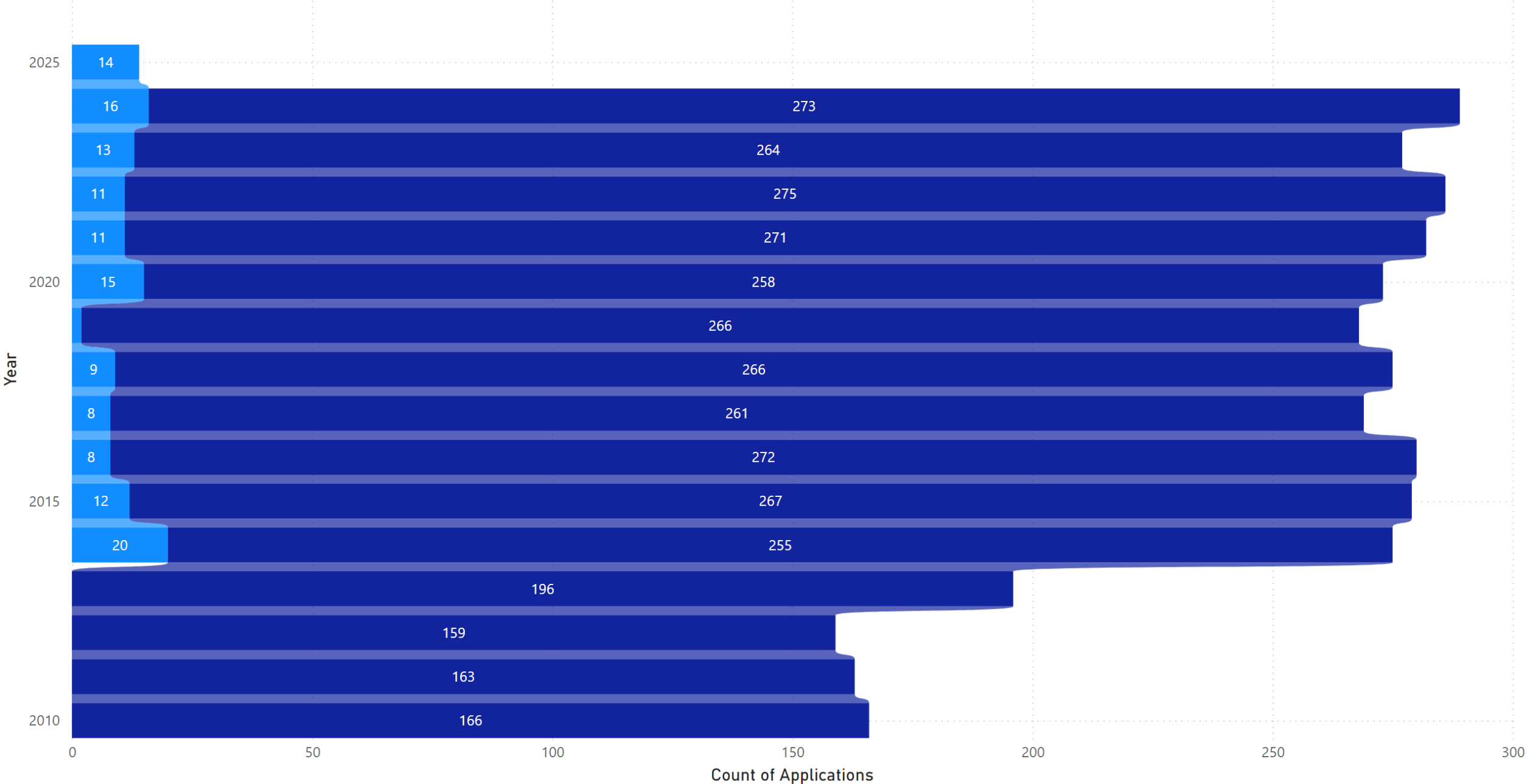
New Agencies Vs Lapsed Agencies

Application Type ● Lapse ● New



Count of New and Renewal Applications by Year

Application Type ● New ● Renewal



- Maine has 82,346 residents (6%) living in an Ambulance Desert
- Most of these residents (54,278) live in a rural county
- 15 of 16 Maine Counties have at least one Ambulance Desert

State Rankings	Counties with Ambulance Deserts
	Percent
Arkansas	100
Idaho	100
Montana	100
Nevada	100
New Mexico	100
North Dakota	100
Oregon	100
Utah	100
Vermont	100
Washington	100
Wyoming	100
Louisiana	98.4
Tennessee	97.9
Mississippi	97.6
Missouri	96.5
Oklahoma	96.1
South Carolina	95.7
Alabama	95.5
Texas	94.9
North Carolina	94.1
Maine	93.8

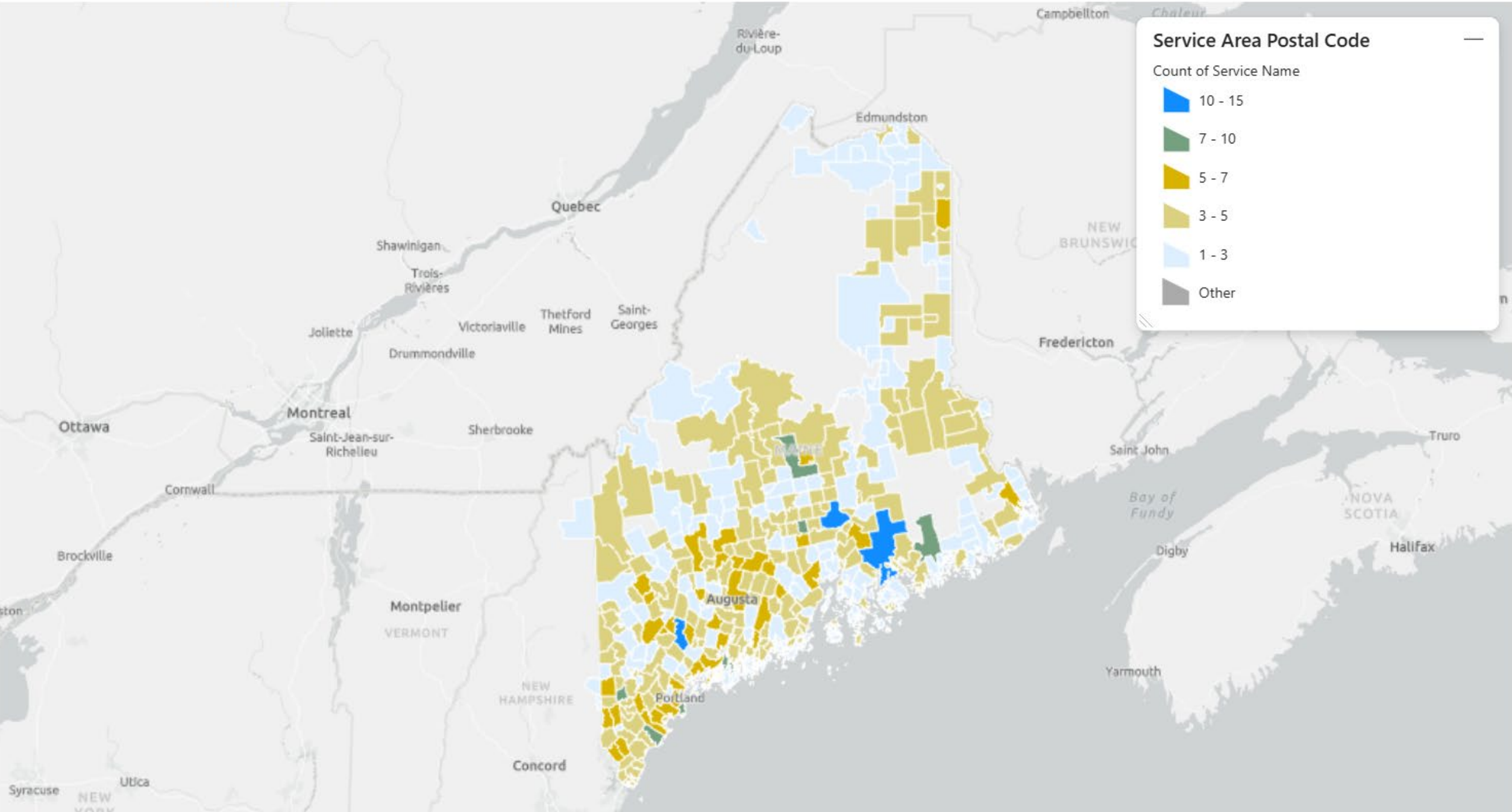
State	Counties	Counties with Ambulance Deserts	
	Number	Number	Percent
Connecticut	8	7	87.5
Maine	16	15	93.8
Massachusetts	14	13	92.9
New Hampshire	10	9	90.0
New York	62	51	82.3
Rhode Island	7	5	71.4
Vermont	14	14	100

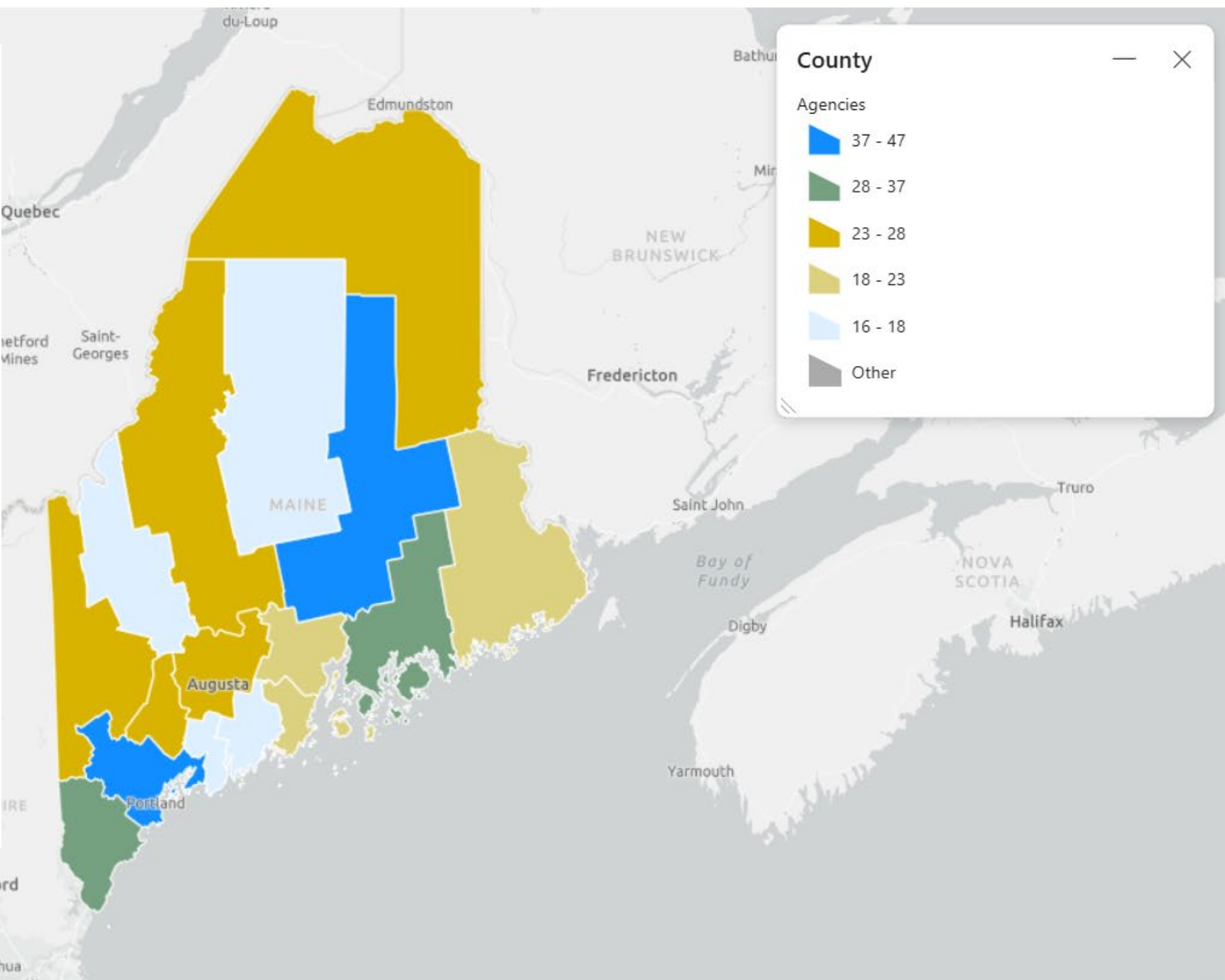
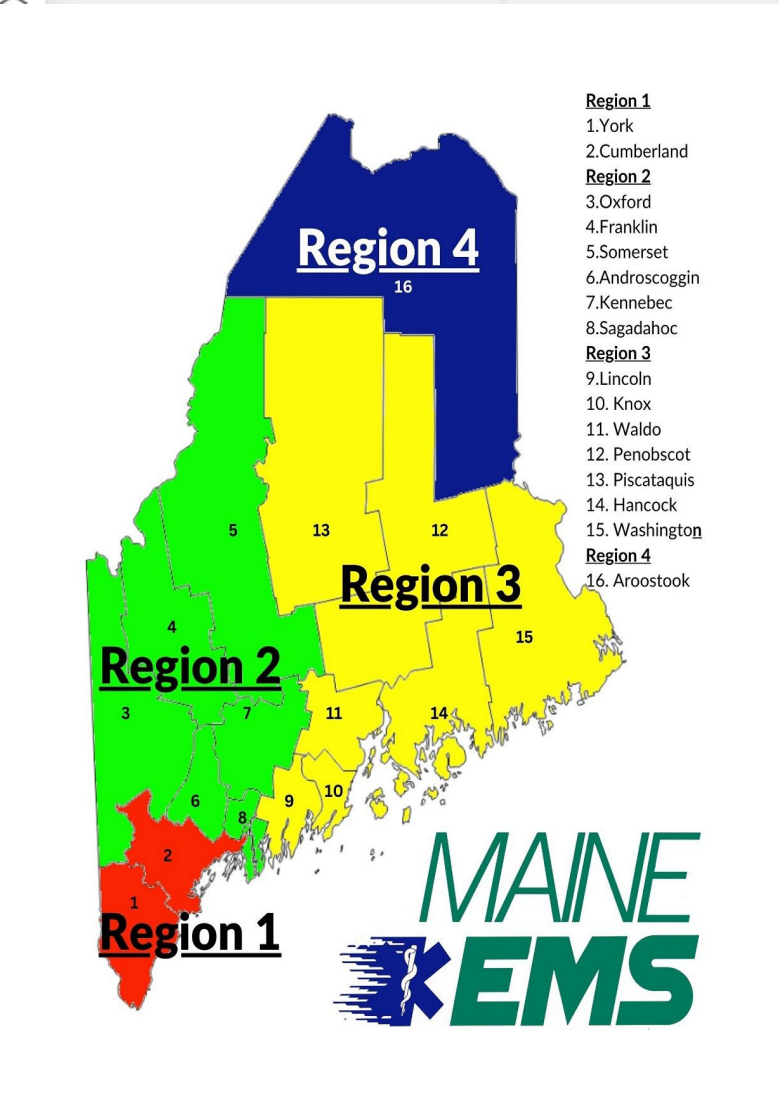
State	Ambulance Stations	2020 Total Population	Ambulance Stations
	Number	Number	N per 100,000
Connecticut	156	3,566,158	4.4
Maine	215	1,362,359	15.8
Massachusetts	535	6,965,025	7.7
New Hampshire	161	1,358,239	11.9
New York	980	20,122,971	4.9
Rhode Island	64	1,077,212	5.9
Vermont	70	638,092	11.0



State Rankings	Ambulance Stations
	N per 100,000
Nevada	1.8
Utah	2.6
North Carolina	3.0
Tennessee	3.1
Alabama	3.4
Missouri	3.5
Kentucky	4.0
Indiana	4.3
Connecticut	4.4
Mississippi	4.7
New York	4.9
Virginia	5.2
Louisiana	5.5
Arkansas	5.9
Rhode Island	5.9
Michigan	6.1
Oklahoma	6.4
Texas	6.4
Illinois	6.6
Maryland	7.0
Delaware	7.1
Oregon	7.2
Ohio	7.5
Massachusetts	7.7
Georgia	8.2
Florida	8.5
Minnesota	8.7
South Carolina	9.1
Vermont	11.0
New Mexico	11.6
New Hampshire	11.9
Idaho	12.1
Wyoming	12.9
Montana	13.1
Wisconsin	13.5
South Dakota	14.1
Iowa	15.2
Washington	15.7
Maine	15.8
Nebraska	18.3
North Dakota	18.6

Count of Services Serving Postal Code

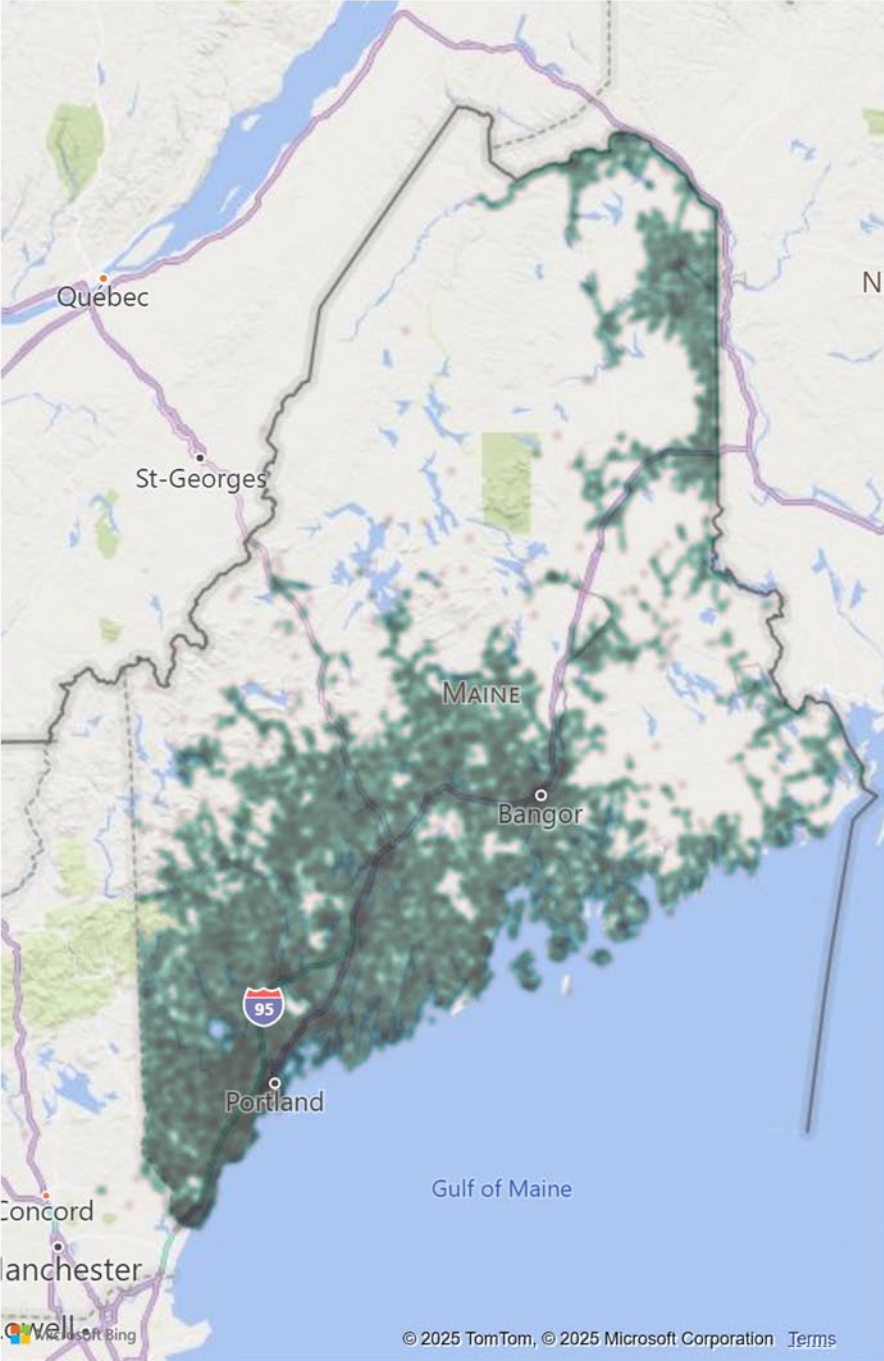




Regional Models

- **ICSD Grants**
- Corinth, Glenburn, Kenduskeag
- Levant, Carmel, Newburg, Etna
- Newry, Peru, Carthage, Canton, Dixfield, Mexico
- Andover, Byron, Hanover, Roxbury, Rumford
- Stockton Springs
- \$179k
- Millinocket, E. Millinocket Unorg. Penobscot County \$42k
- Lisbon, Bowdoin, Bowdoinham \$40k
- Freeport \$39k
- **Total \$300k**

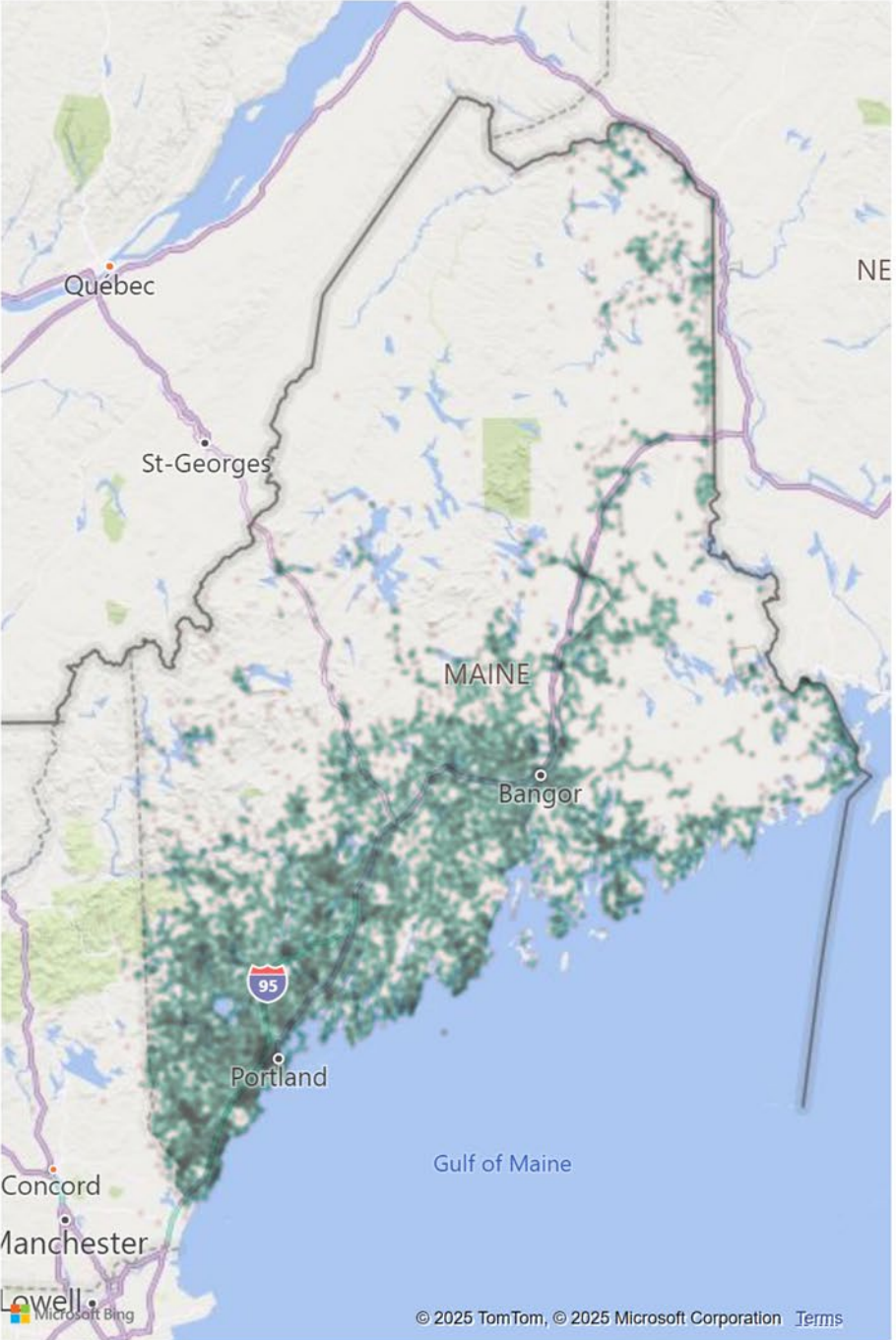
Activations In Service Area



January 1, 2019 - Sept 29, 2025

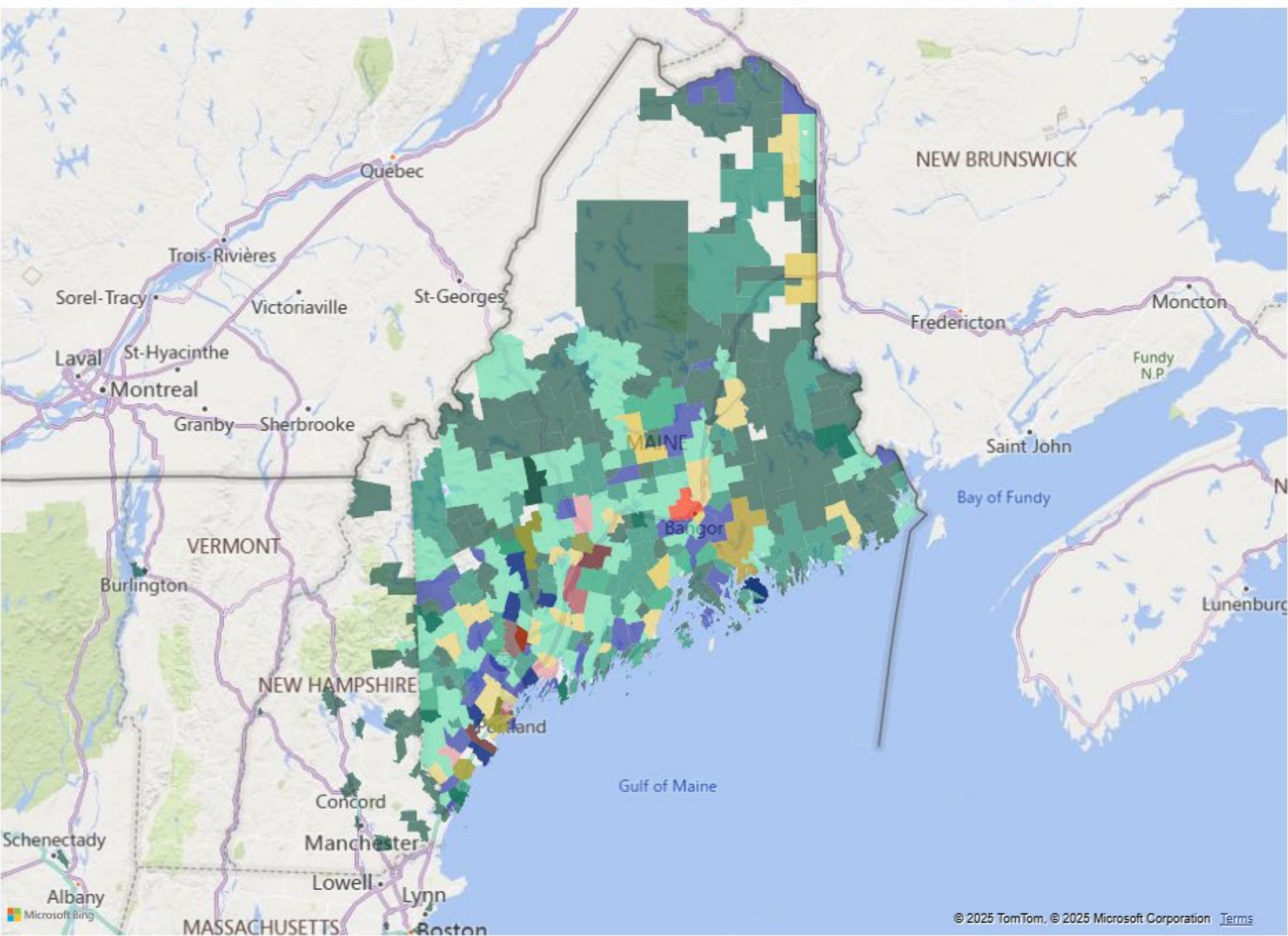
Year	In Service Area	Out Of Service Area	Total
2019	233455	42336	275791
2020	215110	40874	255984
2021	255926	59341	315267
2022	243479	49362	292841
2023	242383	51445	293828
2024	250445	52125	302570
2025	197357	33030	230387
Total	1638155	328513	1966668

Activations Out of Service Area



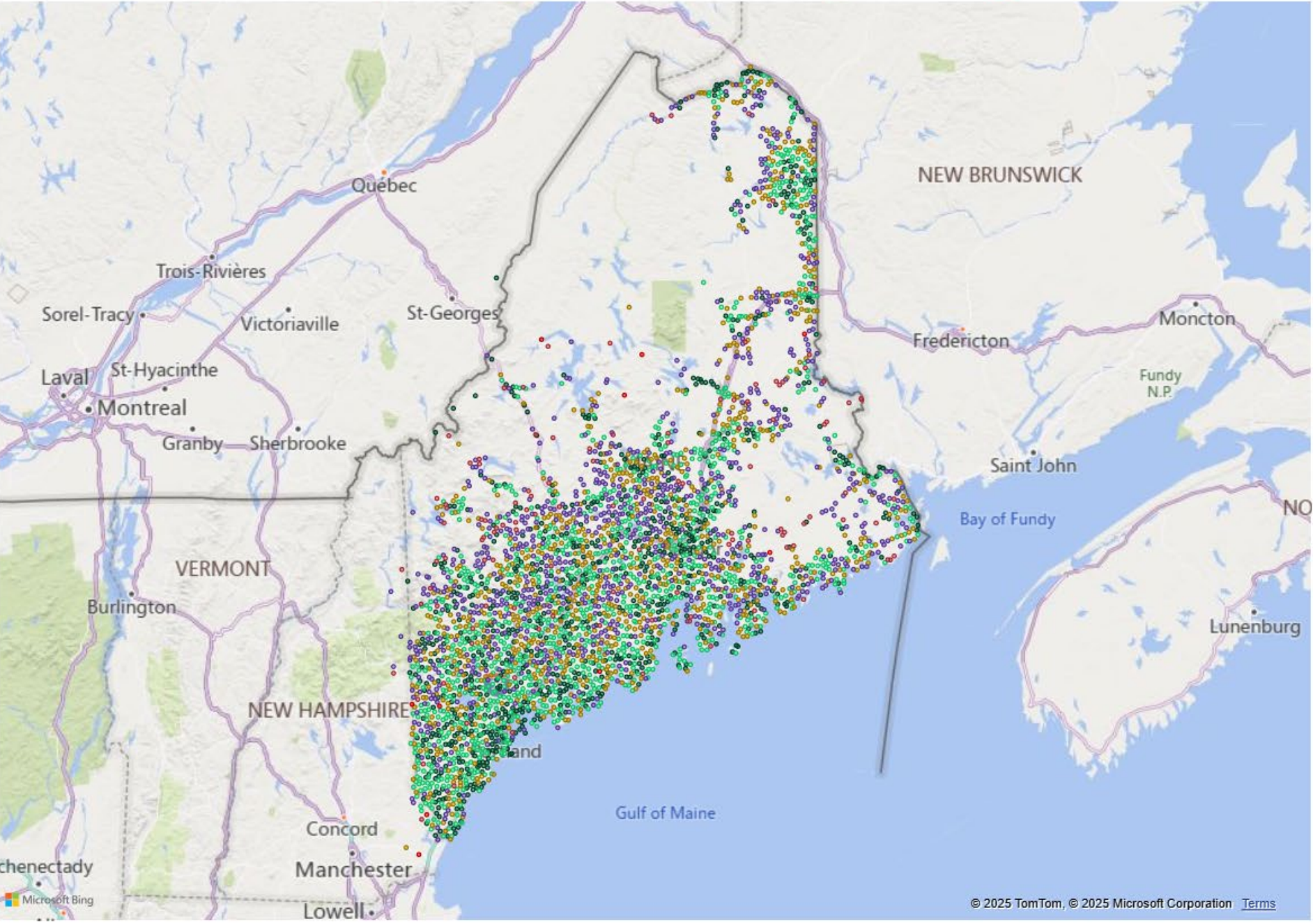
Activations 1-100 101-200 201-500 501-1000 1001-2000 2001-3000 3001-4000 4001-5000 5001-10000 10001-200...

Year 2025



Travel Time (Enroute To Onscene) For Scene Latitude and Scene Longitude

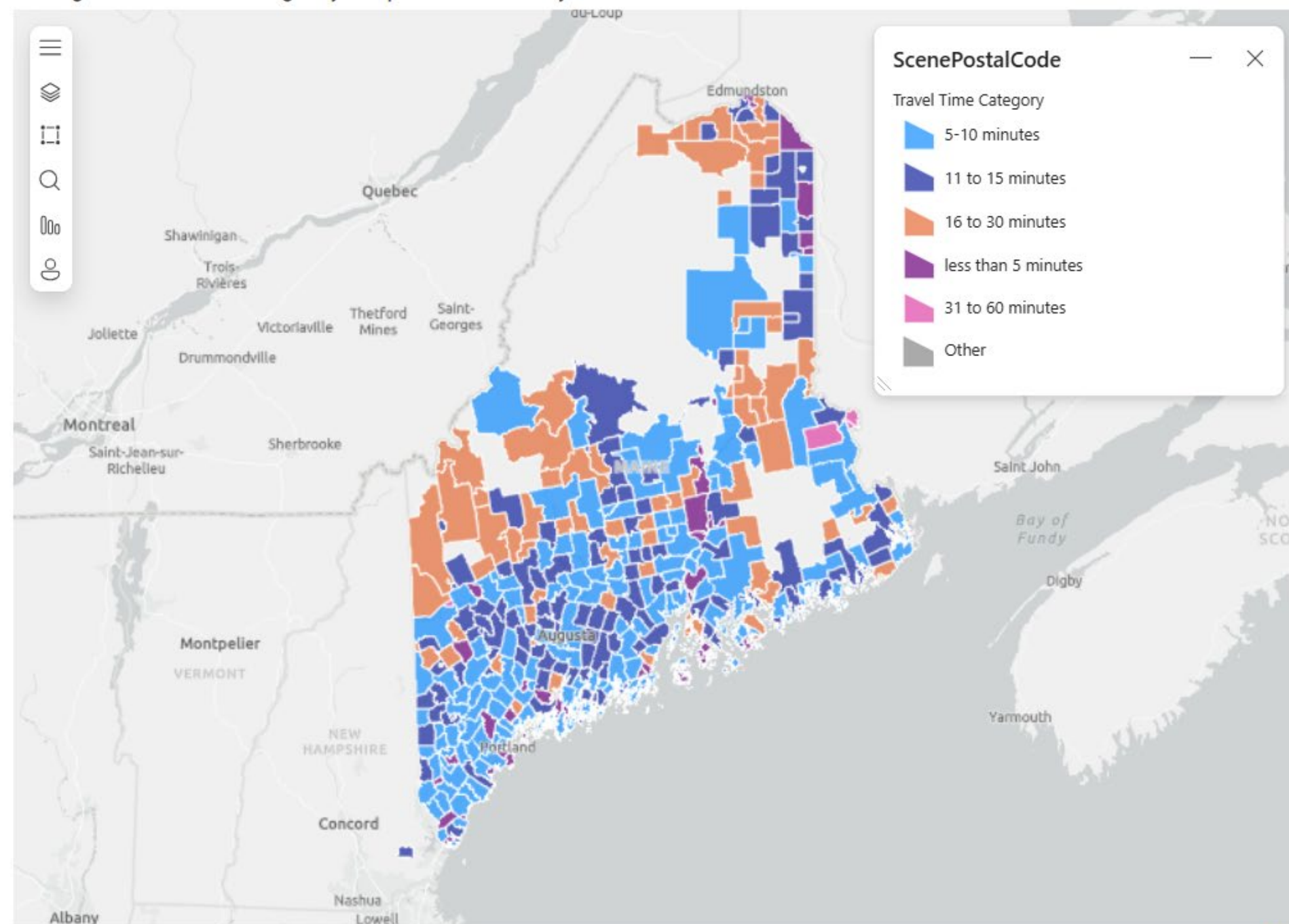
Travel Time Category ● less than 5 minutes ● 5-10 minutes ● 11 to 15 minutes ● 16 to 30 minutes ● 31 to 60 minutes ● More than 1 hour



Type of Service Requested

- ☐ Administrative Operations
- ☐ Crew Transport Only
- ☐ Emergency Response (Intercept)
- ☐ Emergency Response (Mutual Aid)
- ☒ Emergency Response (Primary Res...)
- ☐ Hospital to Non-Hospital Facility Tr...
- ☐ Hospital-to-Hospital Transfer
- ☐ Mobile Integrated Health Care Enc...
- ☐ Non-Hospital Facility to Hospital Tr...
- ☐ Non-Hospital Facility to Non-Hospi...
- ☐ Non-Patient Care Rescue/Extrication
- ☐ Not Reported
- ☐ Other Routine Medical Transport
- ☐ Public Assistance
- ☐ Standby
- ☐ Support Services
- ☐ Transport of Organs or Body Parts

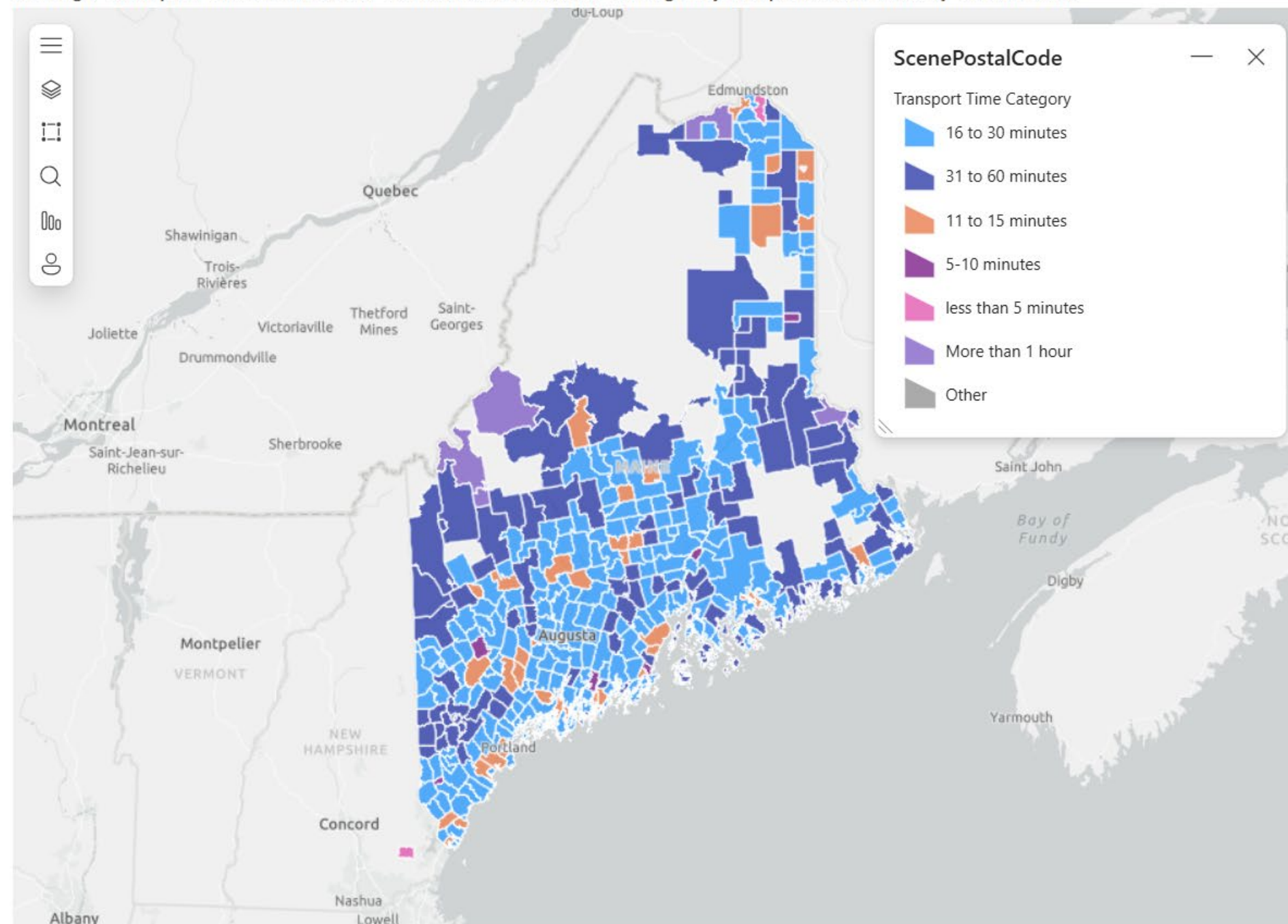
Average Travel Time Emergency Response All Calls by Postal Code



Type of Service Requested

- ☐ Administrative Operations
- ☐ Crew Transport Only
- ☐ Emergency Response (Intercept)
- ☐ Emergency Response (Mutual Aid)
- ☒ Emergency Response (Primary Res...)
- ☐ Hospital to Non-Hospital Facility Tr...
- ☐ Hospital-to-Hospital Transfer
- ☐ Mobile Integrated Health Care Enc...
- ☐ Non-Hospital Facility to Hospital Tr...
- ☐ Non-Hospital Facility to Non-Hospi...
- ☐ Non-Patient Care Rescue/Extrication
- ☐ Not Reported
- ☐ Other Routine Medical Transport
- ☐ Public Assistance
- ☐ Standby
- ☐ Support Services
- ☐ Transport of Organs or Body Parts

Average Transport Time (Left Scene To Arrive Destination) Emergency Response All Calls by Postal Code



Type of Service Requested

- ☐ Administrative Operations
- ☐ Crew Transport Only
- ☐ Emergency Response (Intercept)
- ☐ Emergency Response (Mutual Aid)
- ☒ Emergency Response (Primary Res...)
- ☐ Hospital to Non-Hospital Facility Tr...
- ☐ Hospital-to-Hospital Transfer
- ☐ Mobile Integrated Health Care Enc...
- ☐ Non-Hospital Facility to Hospital Tr...
- ☐ Non-Hospital Facility to Non-Hospi...
- ☐ Non-Patient Care Rescue/Extrication
- ☐ Not Reported
- ☐ Other Routine Medical Transport
- ☐ Public Assistance
- ☐ Standby
- ☐ Support Services
- ☐ Transport of Organs or Body Parts