

**Level 1***Part 2: Hands-On***A. Hands On**

1. Interview reflection (*interview with service members*)
2. Hands-On at the Station (*activities with service*)
3. Obtain CPR certification

**B. Wrap-Up**

1. Upload CPR certification to GenUS Learning Exchange
2. Submit EMS Journal
3. Final Reflection Level 1
4. Final Presentation

**C. Conclusion**

1. Write thank-you to service/mentor
2. Course evaluation
3. Final congratulations video

**Earn Level 1 EMS ConnectME Badge**

This is an online microcredential awarded by Maine EMS/JMG.

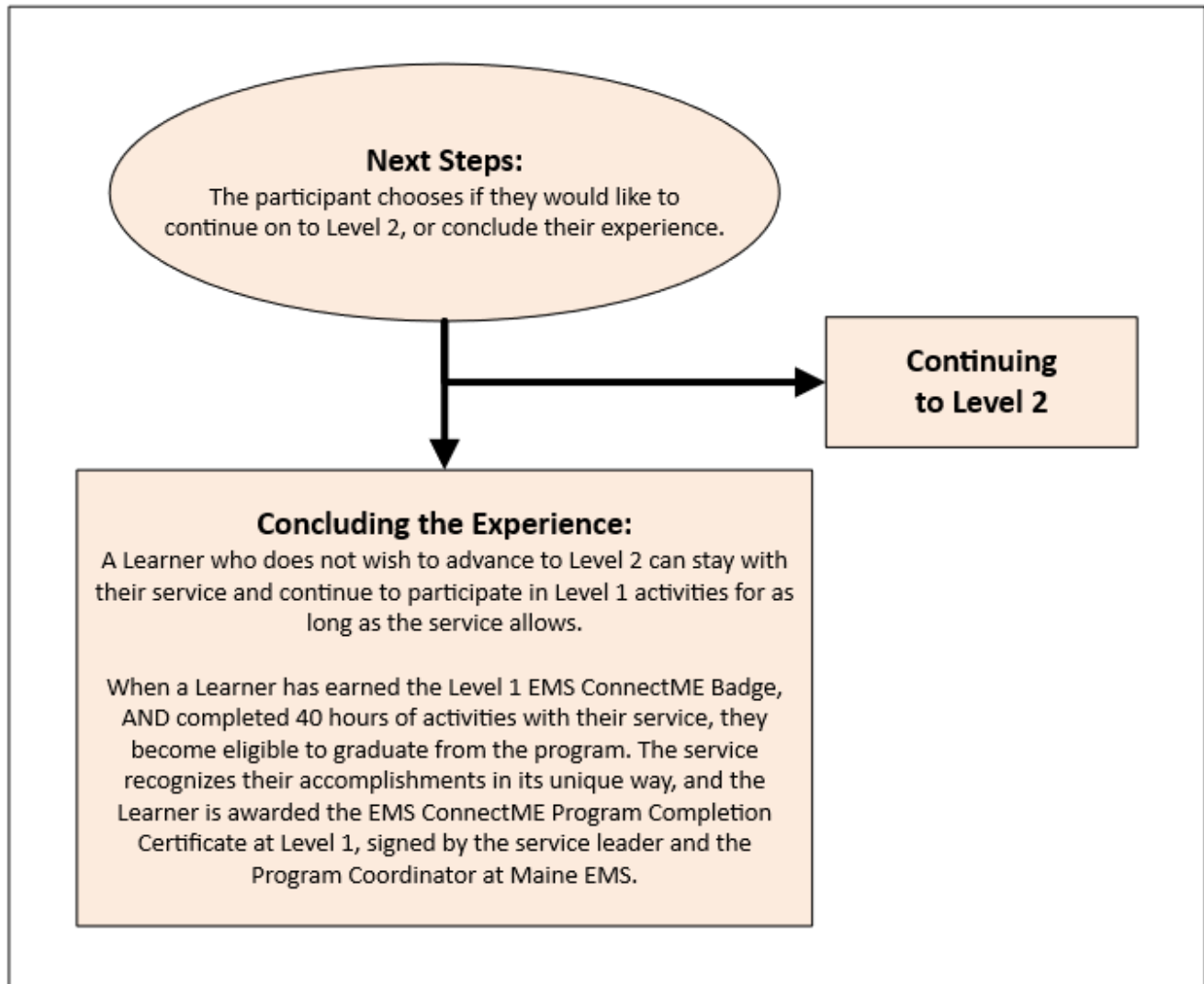
**List of Level 1 Bingo Activities**

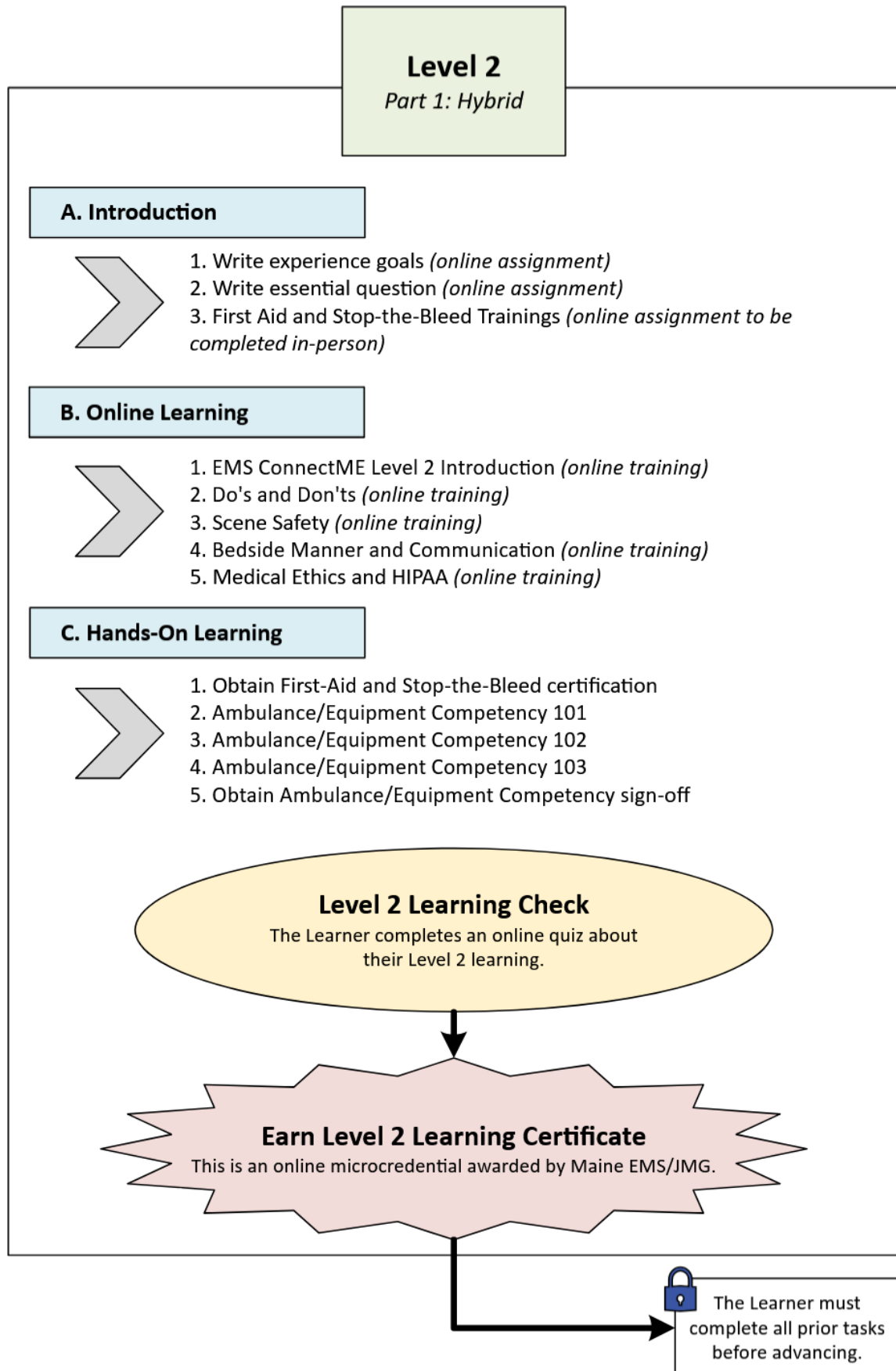
*Activities appear on 1 tile unless otherwise stated.*

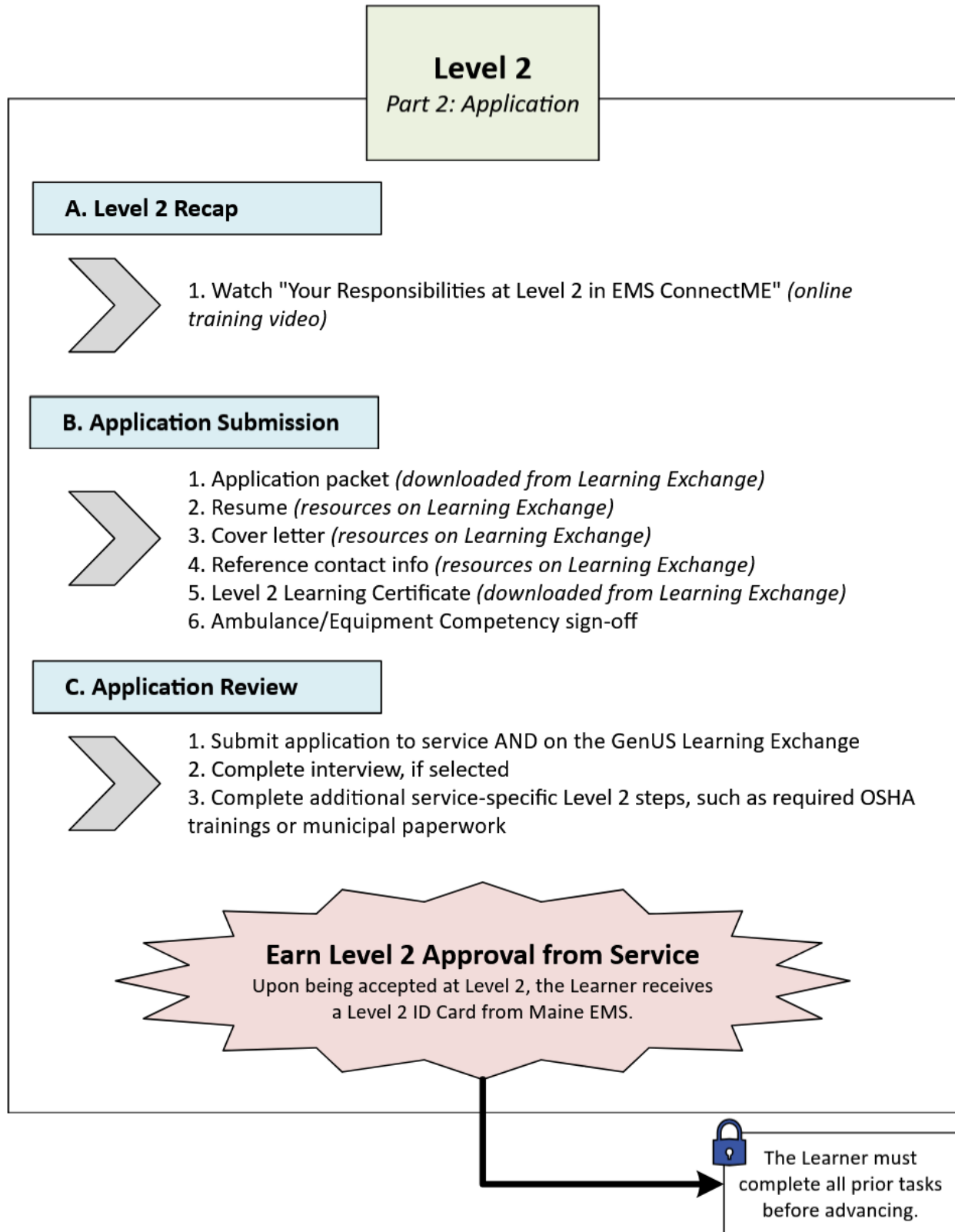
- Participate in a community event with your agency (up to 3 tiles)
- Visit a mutual aid partner (up to 2 tiles)
- Interview a member of the EMS system (up to 2 tiles)
- Bring another person to a program activity
- Share about EMS in school
- Practice an EMS skill with your Mentor
- Practice a radio call
- Practice an EMS job interview
- Attend a Maine EMS Board or Committee meeting
- Debrief a stressful situation with a trusted adult
- Wear EMS ConnectME t-shirt during EMS week
- Visit a community health partner
- Talk to your agency medical director
- Attend your agency's regular training
- Attend a town council or public meeting in which EMS is discussed
- Discuss mental health with a member of your service
- Visit a local dispatch center
- Read about current events in EMS and share new learning
- Take an EMS-related course outside of school
- Read an EMS research article and present new learning
- Obtain another EMS-related certification



The Learner must complete all prior tasks before advancing.







## Level 2

*Part 3: In the Field*

### A. Level 2 Assignments



1. Call Reflections Bingo (*online reflections completed after multiple calls*)
2. EMS Call Log (*online worksheet to be completed 5 times, after 5 different calls*)
3. After-Action Review with Mentor (*online reflection to be completed after a discussion with a Mentor*)

### B. EMS Calls



1. Go on EMS calls with Mentor
2. Upload Level 2 Bingo reflections to Learning Exchange
3. Upload 5 Call Log Worksheets to Learning Exchange
4. Upload After-Action Review reflection to Learning Exchange
5. Complete Final Reflection Level 2

### C. Conclusion



1. Write thank-you to service/mentor
2. Course evaluation
3. Final congratulations video

### List of Level 2 Bingo Reflection Topics

*Activities appear on 1 tile unless otherwise stated.*

- Scene Safety (up to 4 tiles)
- Window Size-Up (up to 3 tiles)
- Equipment (up to 3 tiles)
- EMS Crew Care (up to 2 tiles)
- Other Responders
- Other Healthcare Professionals
- Bystanders
- Radio Communications

## Earn EMS ConnectME Level 2 Badge

This is an online microcredential awarded by Maine EMS/JMG.



The Learner must complete all prior tasks before advancing.

