

EMS Through the Lens of Education

Presented by: Don Sheets
Maine Community College System

Why am I here

- Advocacy
- Clarity
- A Different Perspective



- 5 of 7 colleges are licensed as Training Centers
- 6 of 7 are actively engage in EMS education
- 9 Full time faculty positions
- \$4,156
- \$8,000+



Maine's Community Colleges

What have we done to help

- Innovation Grant
- Maine Jobs and Recovery Plan
- Portfolio Project
- Increasing pass rate



This Photo by Unknown Author is licensed under [CC BY-NC-ND](#)

A large crowd of diverse people, including men, women, and children of various ethnicities and ages, are arranged to form the shape of a world map. The people are standing on a light gray surface, and their shadows are cast on the ground. The map is centered on the Atlantic Ocean, with the Americas on the left and Europe and Africa on the right.

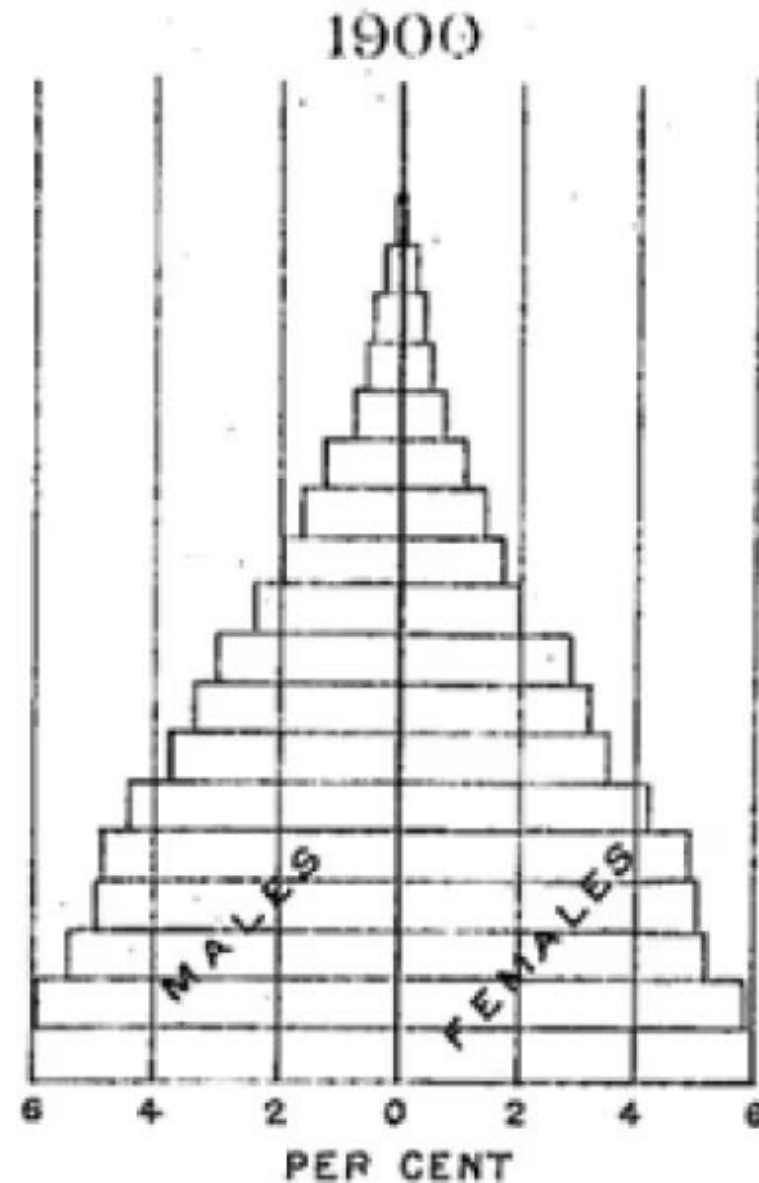
Population Statistic

Age Demographics

And Birth Rates

Figure 1.

This drawing from a 1900 Census report illustrates why this is called a population *pyramid*. The triangular shape with a wide base and narrow peak indicates a growing population.



Source:
<<https://www2.census.gov/library/publications/decennial/1900/volume-2/volume-2-p4.pdf>>.

Population 1960

WW II compression and the baby boom

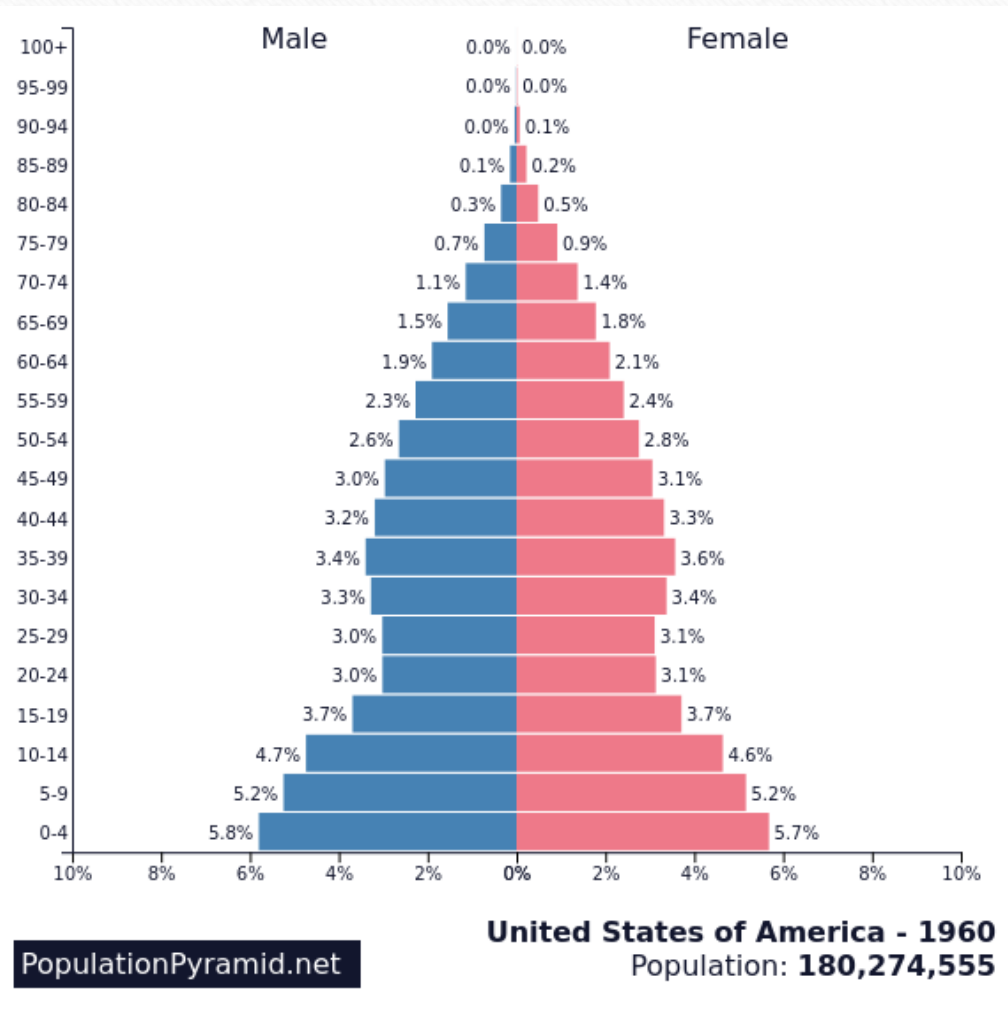
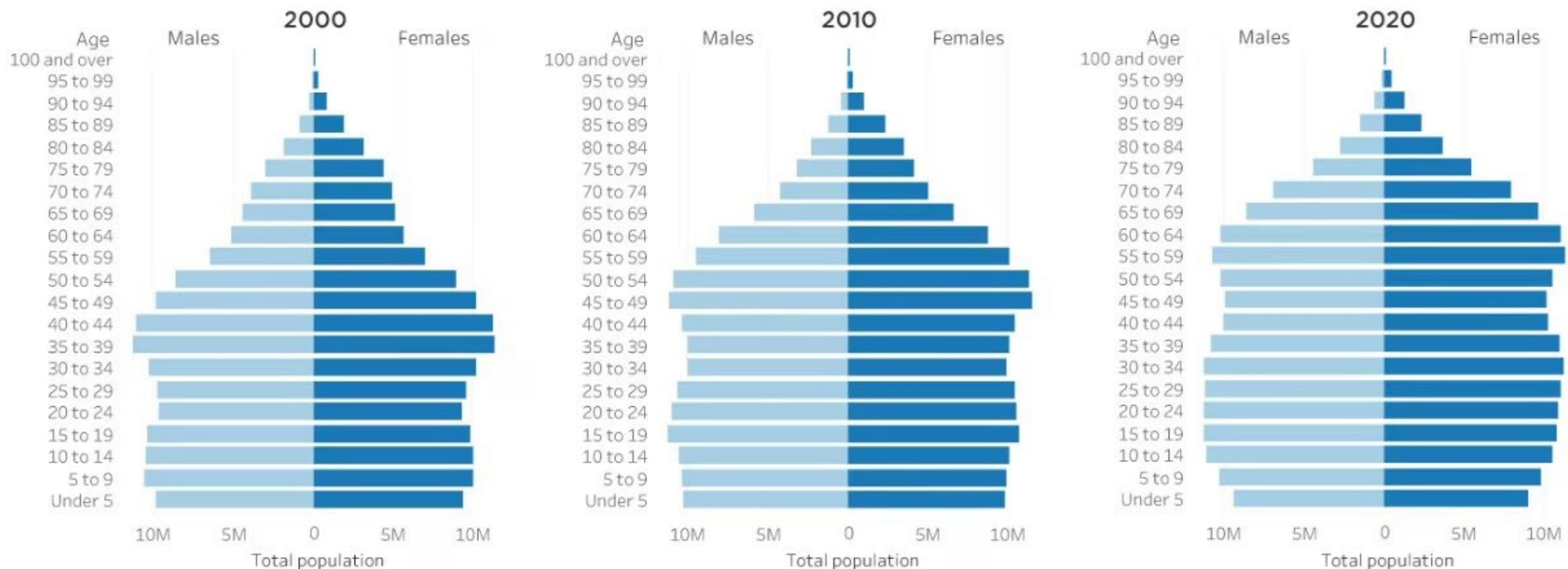


Figure 2.

Population Pyramids for the United States: 2000, 2010 and 2020

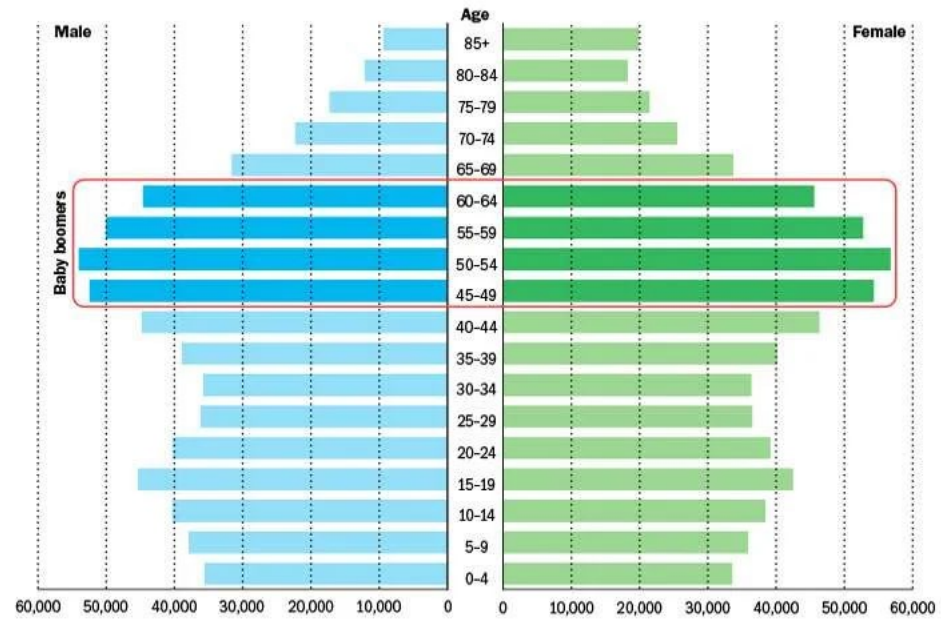
(In millions)



Source: U.S. Census Bureau, Census 2000 Summary File 1 (SF1), 2010 Census Summary File 1 (SF1) and 2020 Census Demographic and Housing Characteristics File (DHC).

MAINE POPULATION PYRAMID, 2010

2010 data shows the Maine's boomers moving into their retirement years

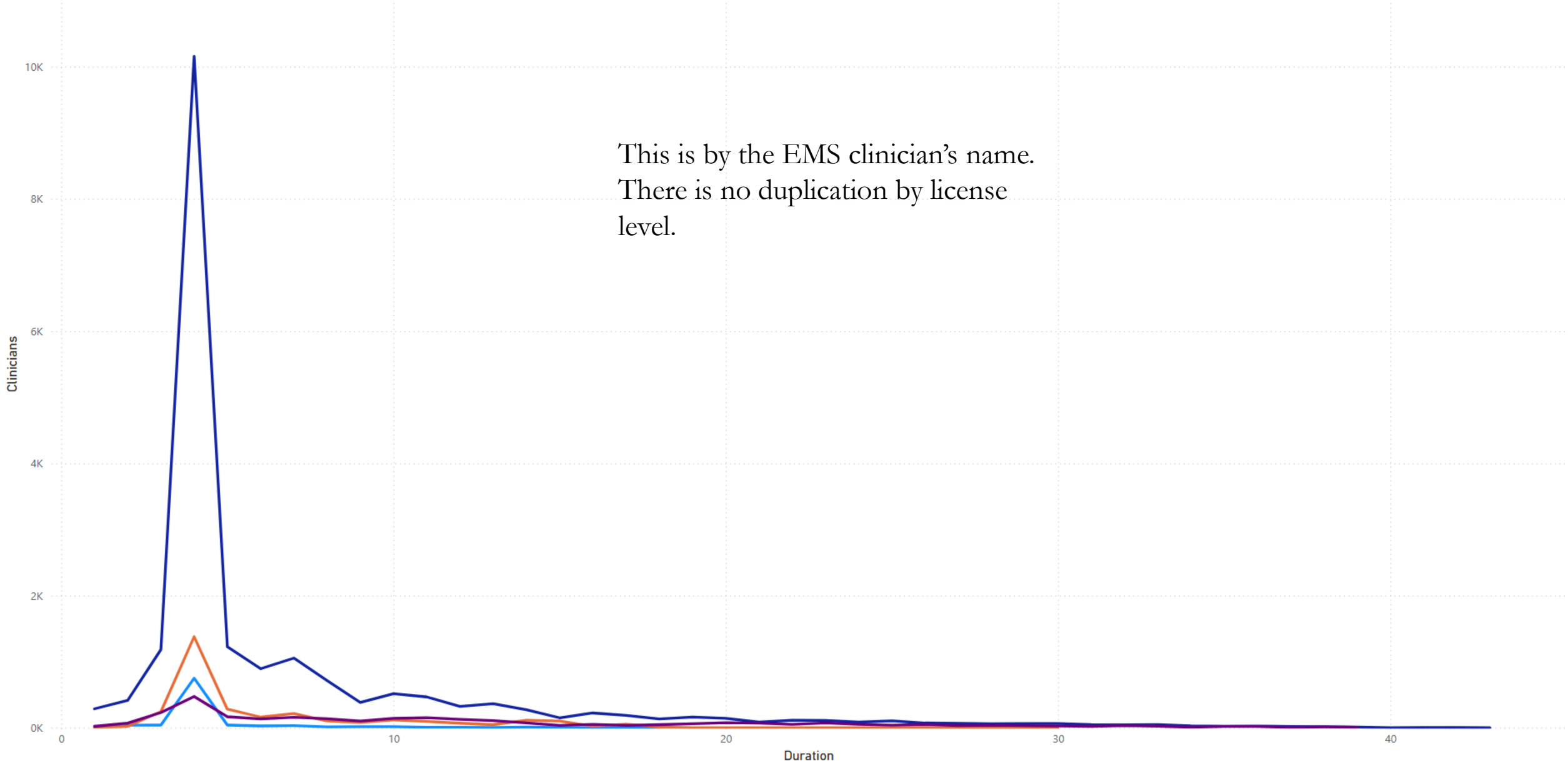


SOURCE: Maine Population Outlook to 2030, Governor's Office of Policy and Management

Maine EMS

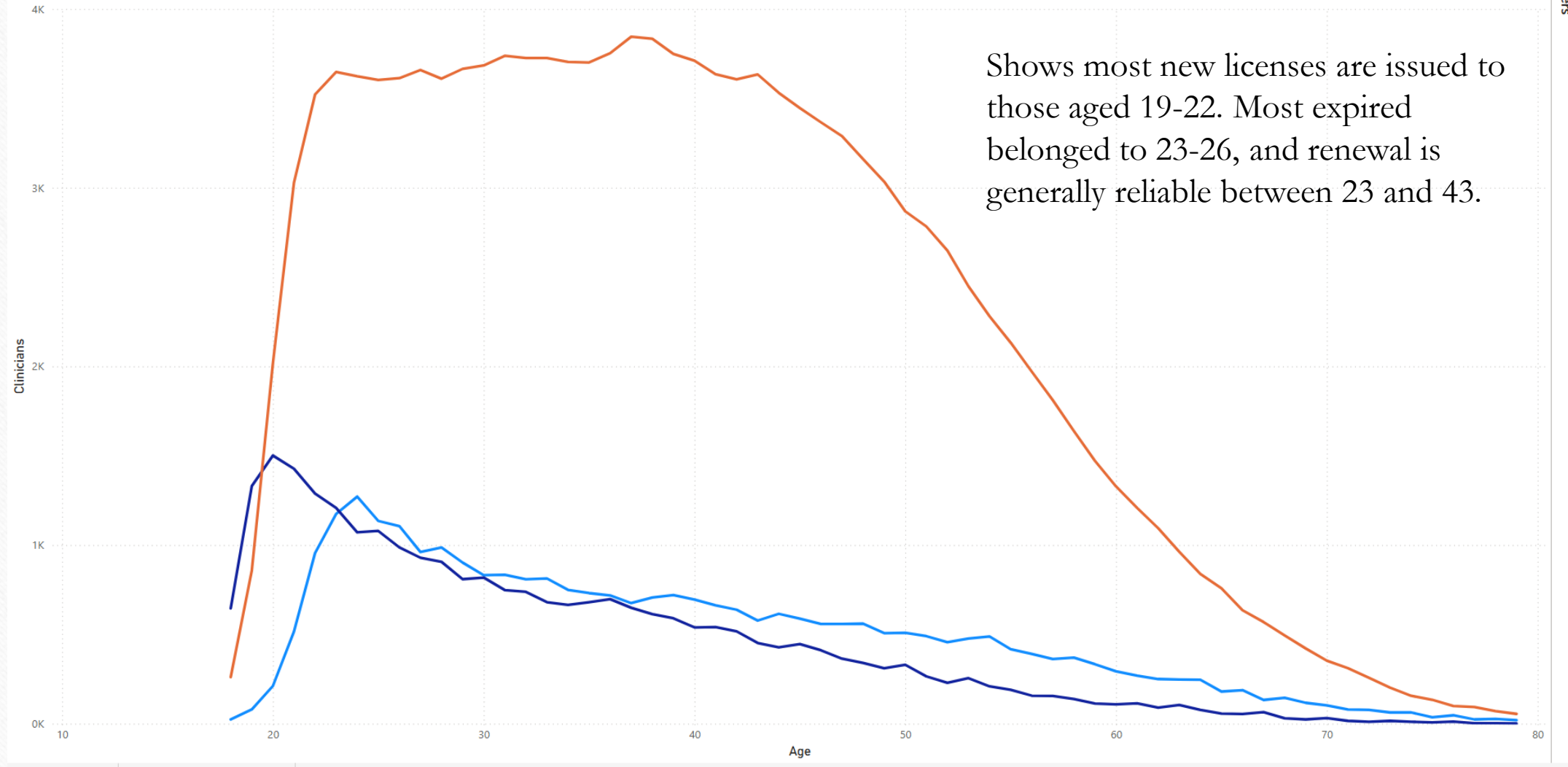
By the Numbers

Certification ● Emergency Medical Responder ● Emergency Medical Technician ● Emergency Medical Technician - Advanced ● Paramedic



This is by the EMS clinician's name.
There is no duplication by license level.

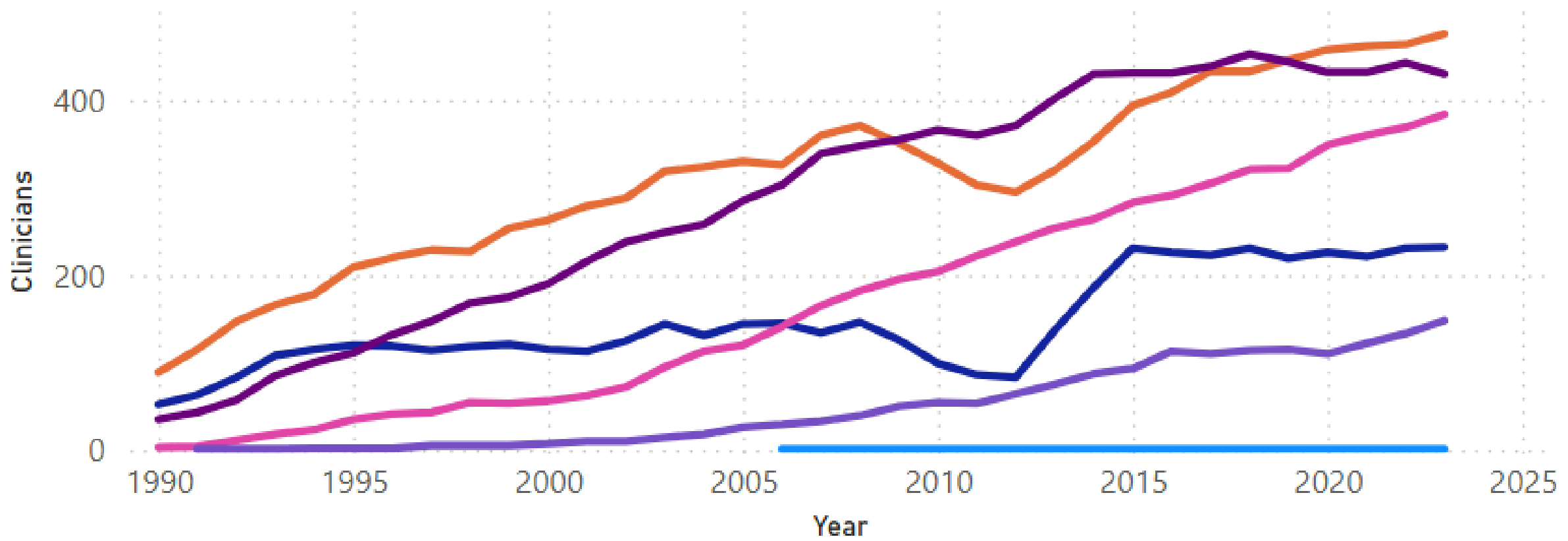
Actions ● Expired ● New ● Renewal



Shows most new licenses are issued to those aged 19-22. Most expired belonged to 23-26, and renewal is generally reliable between 23 and 43.

Clinicians by Year and Age Range

Age Range ● 14 to 19 ● 20 to 29 ● 30 to 39 ● 40 to 49 ● 50 to 59 ● 60 to 69

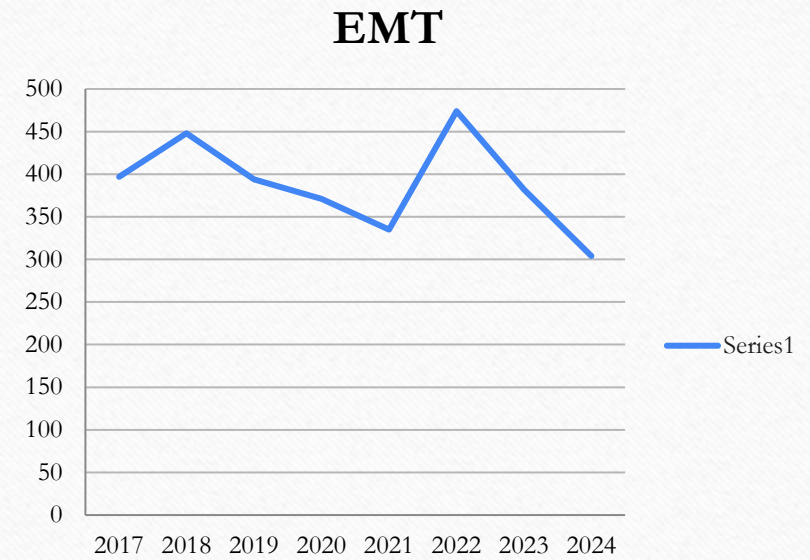


Certification Level Name	Count
Advanced EMT	1,096
Ambulance Operator	531
Emergency Medical Dispatcher	594
Emergency Medical Responder	68
Emergency Medical Technician	3,193
Instructor Coordinator - AEMT	40
Instructor Coordinator - EMT	55
Instructor Coordinator - Paramedic	221
Paramedic	1,705



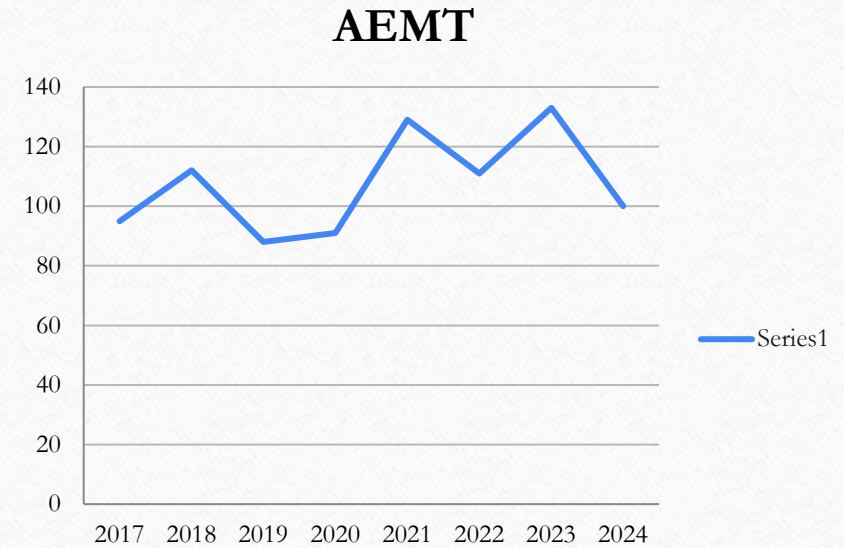
EMT - Statewide

Year	Total:	6th Time Pass	Fail	Pass Percentage
2017	397	292	105	74%
2018	448	357	91	80%
2019	394	303	91	77%
2020	371	289	82	78%
2021	335	274	61	82%
2022	474	378	96	80%
2023	382	302	80	79%
2024	304	235	69	77%



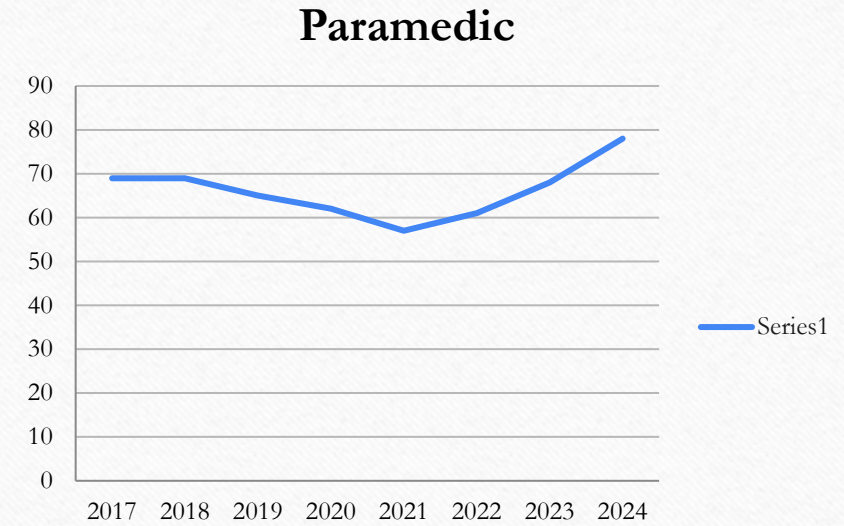
AEMT - Statewide

Year	Total:	6th Time Pass	Fail	Pass Percentage
2017	95	82	13	86%
2018	112	103	9	92%
2019	88	80	8	91%
2020	91	82	9	90%
2021	129	117	12	91%
2022	111	100	11	90%
2023	133	116	17	87%
2024	100	83	17	83%



Paramedic - Statewide

Year	Total:	6th Time Pass	Fail	Pass Percentage
2017	69	69	0	100%
2018	69	69	0	100%
2019	65	61	4	94%
2020	62	60	2	97%
2021	57	55	2	96%
2022	61	60	1	98%
2023	68	64	4	94%
2024	78	73	5	94%



FAQ's

- Why do Paramedics need degrees?
- I already have a degree why do I need another one?
- Can we do EMT and AEMT faster?
- Why don't we just create more training centers to fix the shortage?

Challenges

- Agencies are adding shifts
- Departments have moved to full time
- Staffing is being pulled from volunteer agencies
- Increase in non ambulance roles

Threats



CLINICAL
OPPORTUNITIES



FUNDING



STAFFING

Considerations



EDUCATION NEEDS TO BE
VIEWED AS PART OF THE
SYSTEM.



EDUCATION CANNOT SOLVE
THE PROBLEM, BUT WE CAN
BE PART OF THE SOLUTION.



WE MUST FIND EFFICIENCY
IN HOW WE UTILIZE THE
PEOPLE WE HAVE.

Recommendations

- Tiered response systems
- Larger Agencies may increase clinical opportunities
- Protocols to support changes
- Build meaningful partnerships between agencies and training centers

Thank you

- Maine EMS staff
- MCCS Program Directors
- All of you for your time