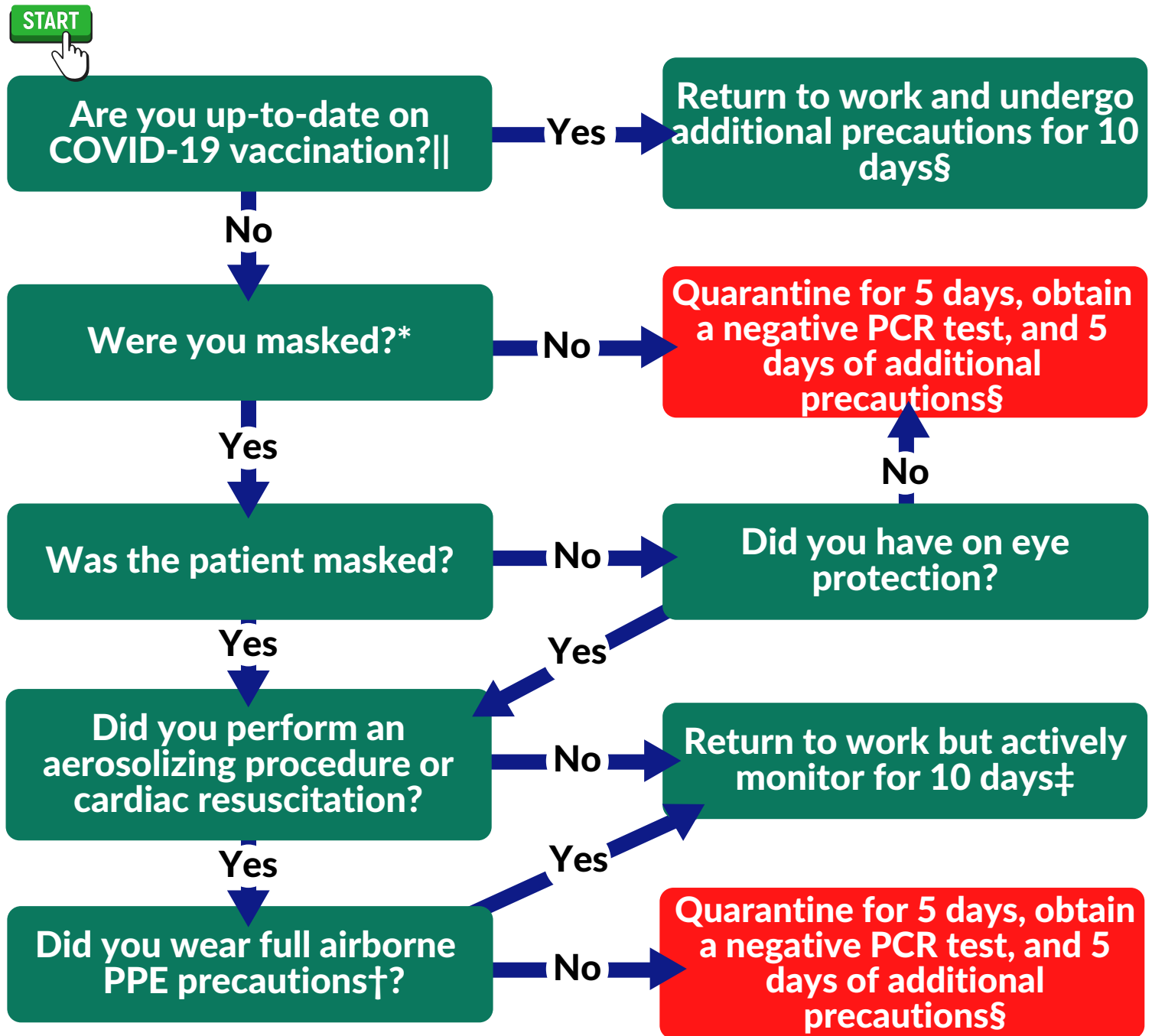


Quarantine Guidance for EMS Clinicians Exposed to Confirmed Cases of COVID-19 (Updated February 4, 2022)

*** This guidance is intended for use in collaboration with a service's Infection Control Officer (ICO)***



* N95 respirators (equivalent or higher) are recommended when caring for COVID-19 patients. Cloth face coverings are not considered PPE for patient interactions

† Full airborne PPE: N95 respirator (equivalent or higher), gloves, gown, and eye protection

‡ Actively monitoring means daily symptom and temperature checks (on and off duty)

§ Additional precautions include taking meals separately, sleeping in separate enclosed spaces (no bunk rooms), wearing N-95 masks at all times, practicing good respiratory and hand hygiene, and actively monitoring for signs and symptoms. Maine EMS recommends that EMS agencies require N-95 for all staff members when there is an individual who is observing additional precautions rather than just surgical masks/face coverings around the base/station.

||Up-to-Date is based on US CDC's definition and means a person who has received all recommended COVID-19 vaccines, including any booster dose(s) when eligible

Note: For calculating days consider the day of exposure as day zero (0)

Note: This is interim guidance and is subject to change, current as of February 4, 2022

For More Information
Including an Up to Date List
of Signs/Symptoms:

