



# Maine EMS for Children

## Statewide MEFIRS Pediatric Data

### Quarter 1 2019 (Jan. 1 – Mar. 30)



The Maine EMS for Children Program is pleased to share this data collected from the Maine EMS & Fire Incident Reporting System (MEFIRS). The data included is as reported by the EMS providers across Maine via state required patient care reports. Data is included for patients age 18 and under only. Data does not include Lifeflight of Maine. No patient identifiable information is included. An excel spreadsheet of the raw data is available on the Maine EMS website, under EMS-C Resources. Visit [www.maine.gov/ems](http://www.maine.gov/ems) for further information.

Thank you to the EMS providers of Maine for your efforts and diligence in documenting your patient care to help us allow for better system wide improvements. Please feel free to reach out with comments and questions.

Never stop learning.

Marc Minkler  
Program Manager, Maine EMS-C

*This project is supported by the Health Resources and Services Administration (HRSA), Maternal and Child Health Bureau (MCHB), Emergency Medical Services for Children (EMSC) State Partnership grant program, Grant # H33MC31622. This information or content and conclusions are those of the author and should not be construed as the official position or policy of, nor should any endorsements be inferred by HRSA, HHS or the U.S. Government.*

# Pediatric EMS Responses Q1, 2019

3,580 EMS RESPONSES

January - 1237

February - 1095

March - 1248



## Responses by County

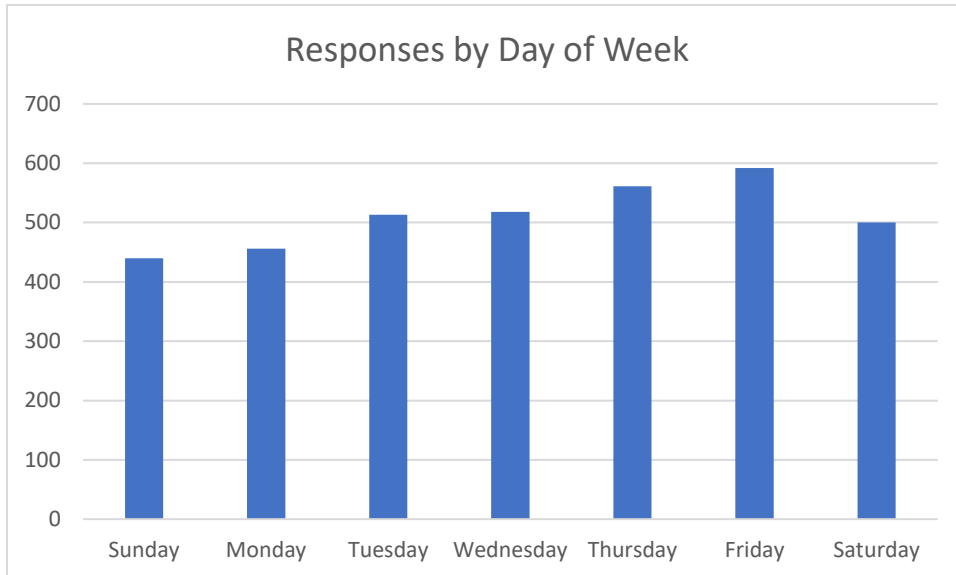
| County             | Responses   |
|--------------------|-------------|
| Androscoggin       | 354         |
| Aroostook          | 155         |
| Cumberland         | 682         |
| Franklin           | 117         |
| Hancock            | 97          |
| Kennebec           | 377         |
| Knox               | 75          |
| Lincoln            | 84          |
| Oxford             | 190         |
| Penobscot          | 464         |
| Piscataquis        | 44          |
| Sagadahoc          | 61          |
| Somerset           | 219         |
| Waldo              | 100         |
| Washington         | 80          |
| York               | 441         |
| NH Carroll         | 3           |
| NH Hillsborough    | 1           |
| NH Merrimack       | 1           |
| NH Rockingham      | 1           |
| NH Strafford       | 4           |
| (blank)            | 30          |
| <b>Grand Total</b> | <b>3580</b> |

| Level of Assessment & Care | Responses   | %           |
|----------------------------|-------------|-------------|
| ALS                        | 1360        | 38%         |
| BLS                        | 1940        | 54%         |
| Community Paramedicine     | 9           | 0%          |
| None Provided              | 52          | 1%          |
| PIFT                       | 77          | 2%          |
| Specialty Care Transport   | 108         | 3%          |
| (blank)                    | 34          | 1%          |
| <b>Grand Total</b>         | <b>3580</b> | <b>100%</b> |

*54% of responses were managed at the BLS level, while 74% of responses had a paramedic available.*

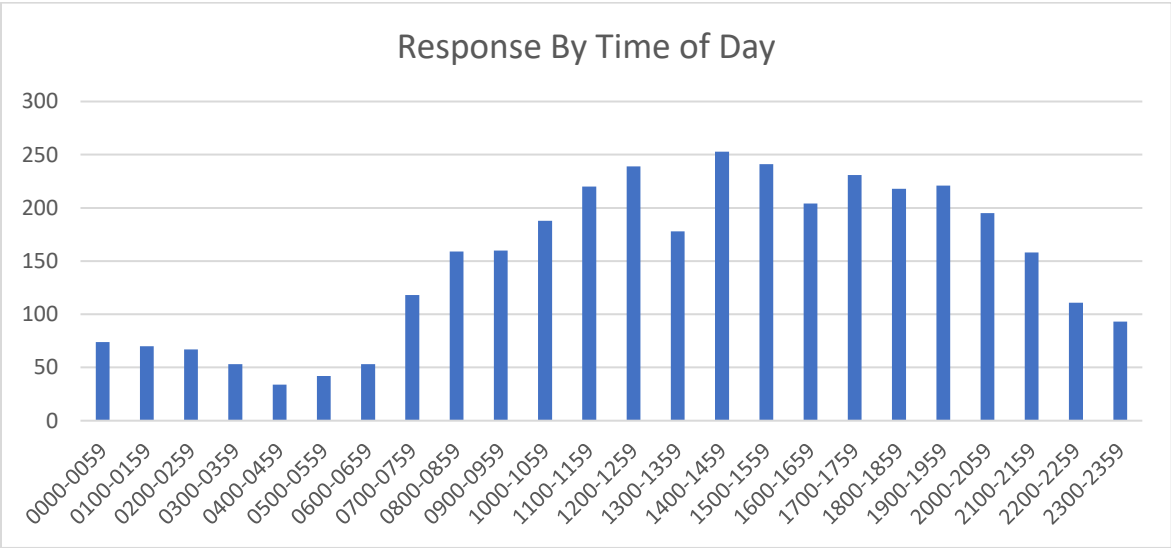
# Responses By Day of Week

| Day                | Responses   |
|--------------------|-------------|
| Sunday             | 440         |
| Monday             | 456         |
| Tuesday            | 513         |
| Wednesday          | 518         |
| Thursday           | 561         |
| Friday             | 592         |
| Saturday           | 500         |
| <b>Grand Total</b> | <b>3580</b> |



*Statistically, the most likely time of a pediatric call is between 2 and 3pm on a Friday .*

# Responses By Time of Day, Q1 2019



| Incident Time | Responses |
|---------------|-----------|
| 0000-0059     | 74        |
| 0100-0159     | 70        |
| 0200-0259     | 67        |
| 0300-0359     | 53        |
| 0400-0459     | 34        |
| 0500-0559     | 42        |
| 0600-0659     | 53        |
| 0700-0759     | 118       |
| 0800-0859     | 159       |
| 0900-0959     | 160       |
| 1000-1059     | 188       |
| 1100-1159     | 220       |
| 1200-1259     | 239       |
| 1300-1359     | 178       |
| 1400-1459     | 253       |
| 1500-1559     | 241       |
| 1600-1659     | 204       |
| 1700-1759     | 231       |
| 1800-1859     | 218       |
| 1900-1959     | 221       |
| 2000-2059     | 195       |
| 2100-2159     | 158       |
| 2200-2259     | 111       |
| 2300-2359     | 93        |
| Grand Total   | 3580      |



# Disposition of Pediatric Responses, Q1 2019

| Disposition  | Responses   |
|--|-------------|
| Assist – Other Unit or Agency                      | 28          |
| Assist - Public                                    | 11          |
| Canceled (Prior to Arrival At Scene)               | 2           |
| Community Paramedicine Visit                       | 9           |
| Dead at Scene - No Resuscitation Attempted         | 9           |
| Dead at Scene - Resuscitation Attempted            | 12          |
| Paramedic Intercept                                | 17          |
| No Patient Found/Contact                           | 2           |
| Patient Evaluated, No Treatment/Transport Required | 259         |
| Patient Refused Evaluation/Care/Transport          | 89          |
| Patient Treated - Refused Transport                | 410         |
| Standby - No Patient Contact                       | 2           |
| Treated - Transported by this EMS Unit             | 2571        |
| Treated, Transferred Care to Another EMS Unit      | 159         |
| <b>Grand Total</b>                                 | <b>3580</b> |

24% of responses for a pediatric patient resulted in a non-transport.



## Patient Gender

| Gender                        | Responses   | %             |
|-------------------------------|-------------|---------------|
| Female                        | 1717        | 48.0%         |
| Female to Male                | 11          | 0.3%          |
| Male                          | 1826        | 51.0%         |
| Male to Female                | 2           | 0.1%          |
| Unknown (Unable to Determine) | 23          | 0.6%          |
| (blank)                       | 1           | 0.0%          |
| <b>Grand Total</b>            | <b>3580</b> | <b>100.0%</b> |

# Age Breakdown of Patients, Q1 2019

## All Ages (0-18)

| Age          | Responses   |
|--------------|-------------|
| 0-1          | 381         |
| 1-2          | 266         |
| 2-3          | 180         |
| 3-4          | 115         |
| 4-5          | 112         |
| 5-6          | 96          |
| 6-7          | 102         |
| 7-8          | 103         |
| 8-9          | 78          |
| 9-10         | 68          |
| 10-11        | 83          |
| 11-12        | 152         |
| 12-13        | 144         |
| 13-14        | 193         |
| 14-15        | 194         |
| 15-16        | 284         |
| 16-17        | 257         |
| 17-18        | 343         |
| 18-19        | 429         |
| <b>Total</b> | <b>3580</b> |

## Under 1 Year

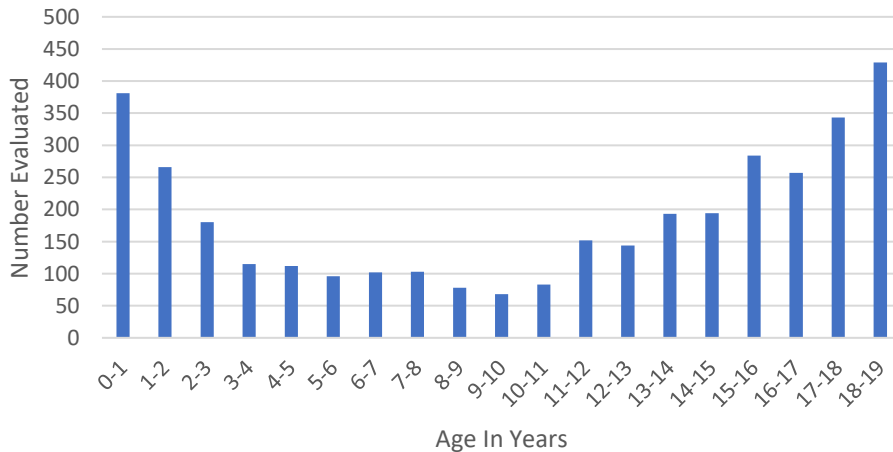
| Age in Months | Responses  |
|---------------|------------|
| 1             | 25         |
| 2             | 35         |
| 3             | 31         |
| 4             | 21         |
| 5             | 26         |
| 6             | 23         |
| 7             | 33         |
| 8             | 20         |
| 9             | 17         |
| 10            | 26         |
| 11            | 18         |
| <b>Total</b>  | <b>275</b> |

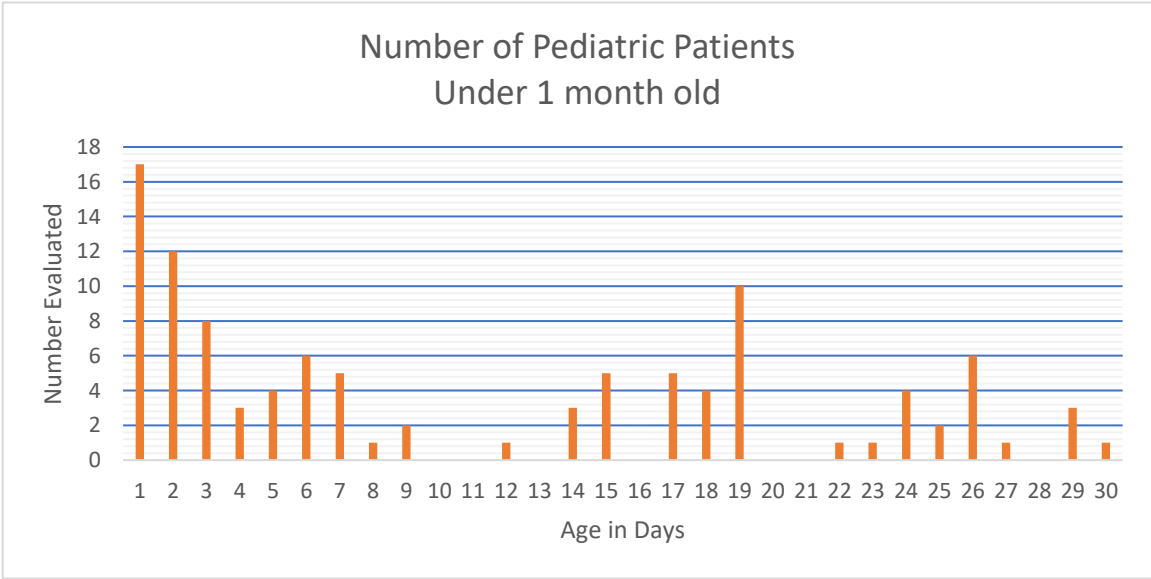
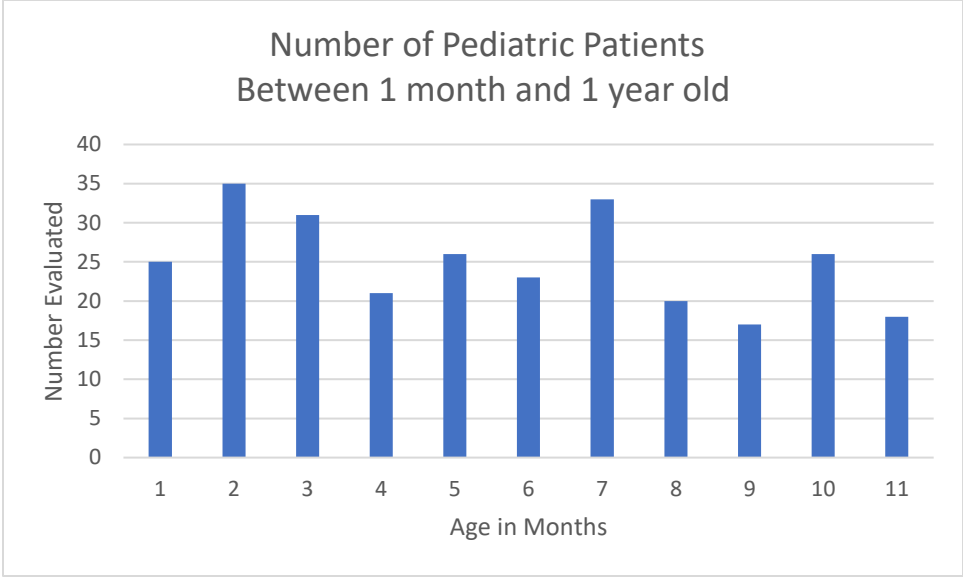
## Under 1 Month

| Age in Days  | Responses  |
|--------------|------------|
| 1            | 17         |
| 2            | 12         |
| 3            | 8          |
| 4            | 3          |
| 5            | 4          |
| 6            | 6          |
| 7            | 5          |
| 8            | 1          |
| 9            | 2          |
| 10           | 0          |
| 11           | 0          |
| 12           | 1          |
| 13           | 0          |
| 14           | 3          |
| 15           | 5          |
| 16           | 0          |
| 17           | 5          |
| 18           | 4          |
| 19           | 10         |
| 20           | 0          |
| 21           | 0          |
| 22           | 1          |
| 23           | 1          |
| 24           | 4          |
| 25           | 2          |
| 26           | 6          |
| 27           | 1          |
| 28           | 0          |
| 29           | 3          |
| 30           | 1          |
| <b>TOTAL</b> | <b>105</b> |



Frequency of Pediatric Patients By Age





# Primary Impression, Q1 2019

## Top 10 Primary Impressions

| Primary Impression                 | Occurrences |
|------------------------------------|-------------|
| No findings or Complaints          | 420         |
| Behavioral - Psychiatric Episode   | 366         |
| Neurological - Seizure             | 278         |
| Injury - Head/Face/Neck            | 197         |
| Behavioral - Anxiety               | 147         |
| Behavioral - Suicide attempt       | 106         |
| Medical - Cold / Flu Like Symptoms | 104         |
| Medical - Fever                    | 100         |
| Medical - Malaise / Weakness       | 100         |
| Respiratory - Distress             | 94          |



## All Primary Impressions

| Primary Impression                      | Occurrences |
|---|-------------|
| Abdomen - Acute                         | 24          |
| Abdomen - Appendicitis                  | 31          |
| Airway - Choking                        | 25          |
| Airway - Pneumothorax - Spontaneous     | 2           |
| Behavioral - Anxiety                    | 147         |
| Behavioral - Excited Delirium           | 5           |
| Behavioral - Psychiatric Episode        | 366         |
| Behavioral - Suicide attempt            | 106         |
| Cardiac - Arrest                        | 20          |
| Cardiac - Arrhythmia                    | 13          |
| Cardiac - Chest pain                    | 11          |
| Cardiac - CHF                           | 5           |
| Cardiac - Tamponade                     | 1           |
| Environmental - Frostbite - Superficial | 3           |
| Environmental - Heat exhaustion         | 1           |
| Environmental - Hypothermia             | 6           |
| Foreign body - Eye                      | 2           |
| Foreign body - Gastrointestinal Tract   | 4           |
| Foreign body - Genitourinary tract      | 1           |
| Foreign body - Respiratory tract        | 6           |
| GI - Blood in Stool                     | 2           |
| GI - Constipation                       | 7           |



| Primary Impression                          | Occurrences |
|---|-------------|
| GI - Diarrhea                               | 7           |
| GI - GERD                                   | 1           |
| GI - Nausea                                 | 12          |
| GI - Nausea and/or Vomiting                 | 72          |
| Hemorrhage - Epidural                       | 4           |
| Hemorrhage - Subdural, Traumatic            | 1           |
| Hemorrhage - Vaginal/Uterine                | 2           |
| Injury - Abdomen                            | 12          |
| Injury - Back                               | 21          |
| Injury - Chest                              | 10          |
| Injury - Genitals/Hip                       | 17          |
| Injury - Head/Face/Neck                     | 197         |
| Injury - Inhalation                         | 4           |
| Injury - Lower Extremity                    | 83          |
| Injury - Unspecified                        | 14          |
| Injury - Upper Extremity                    | 61          |
| Medical - Allergic Reaction                 | 46          |
| Medical - Altered Mental Status             | 42          |
| Medical - Anemia                            | 4           |
| Medical - Cancer                            | 1           |
| Medical - Cold / Flu Like Symptoms          | 104         |
| Medical - Dehydration                       | 17          |
| Medical - Diabetic Ketoacidosis             | 24          |
| Medical - Epiglottitis                      | 4           |
| Medical - Fever                             | 100         |
| Medical - Headache / Migraine               | 25          |
| Medical - Hyperglycemia                     | 6           |
| Medical - Hypertension                      | 1           |
| Medical - Hypoglycemia                      | 13          |
| Medical - Infection - Skin                  | 20          |
| Medical - Infectious Disease - Non-specific | 9           |
| Medical - Malaise / Weakness                | 100         |
| Medical - Medical Device Failure            | 4           |
| Medical - Sepsis                            | 6           |
| Medical - Sickle Cell Crisis                | 3           |
| Medical - Syncope                           | 77          |
| Medical - Urinary tract infection           | 5           |
| Neurological - Seizure                      | 278         |
| Neurological - Stroke/CVA/TIA               | 5           |
| Newborn - Premature                         | 12          |
| Newborn - Respiratory distress              | 11          |
| No findings or Complaints                   | 420         |

| <b>Primary Impression</b>                   | <b>Occurrences</b> |
|---|--------------------|
| OB/GYN - Labor and Delivery                 | 3                  |
| OB/GYN - Miscarriage                        | 1                  |
| OB/GYN - Pre-eclampsia                      | 1                  |
| Pain - Abdominal                            | 63                 |
| Pain - Acute                                | 35                 |
| Pain - Arm                                  | 47                 |
| Pain - Back                                 | 47                 |
| Pain - Chest-Non Cardiac                    | 17                 |
| Pain - Eye                                  | 3                  |
| Pain - Hip                                  | 19                 |
| Pain - Leg                                  | 65                 |
| Pain - Tooth/Mouth/Throat                   | 6                  |
| Respiratory - Acute Bronchitis              | 19                 |
| Respiratory - Acute Bronchospasm            | 15                 |
| Respiratory - Arrest                        | 4                  |
| Respiratory - Asthma, Acute exacerbation    | 52                 |
| Respiratory - Croup                         | 39                 |
| Respiratory - Distress                      | 94                 |
| Respiratory - Pneumonia                     | 34                 |
| Respiratory - R.S.V.                        | 49                 |
| Shock - Anaphylactic                        | 11                 |
| Shock - Cardiogenic                         | 1                  |
| Shock - Hypotension                         | 2                  |
| Shock - Hypovolemia                         | 1                  |
| Toxin - Alcohol use                         | 37                 |
| Toxin - Cannabis use                        | 3                  |
| Toxin - Opioid use                          | 4                  |
| Toxin - Overdose/Drug Ingestion (non-opiod) | 74                 |
| Trauma - Burn                               | 18                 |
| Trauma - Concussion                         | 43                 |
| Trauma - Epistaxis                          | 14                 |
| Trauma - Multiple injuries                  | 59                 |
| Vision - Disturbance                        | 2                  |
| (blank)                                     | 55                 |
| <b>Grand Total</b>                          | <b>3580</b>        |

# Destination of Pediatric Transports, Q1 2019

## Top 10 Destinations

| Destination   | Transports |
|---|------------|
| MAINE MEDICAL CENTER                                    | 620        |
| EASTERN MAINE MEDICAL CENTER                            | 276        |
| CENTRAL MAINE MEDICAL CENTER                            | 133        |
| ACADIA HOSPITAL   | 132        |
| MAINE GENERAL MEDICAL CENTER - ALFOND CENTER FOR HEALTH | 129        |
| SAINT MARYS REGIONAL MEDICAL CENTER                     | 120        |
| SPRING HARBOR HOSPITAL                                  | 101        |
| SMHC - BIDDEFORD MEDICAL CENTER                         | 83         |
| MID COAST HOSPITAL                                      | 80         |
| REDINGTON FAIRVIEW GENERAL HOSPITAL                     | 75         |

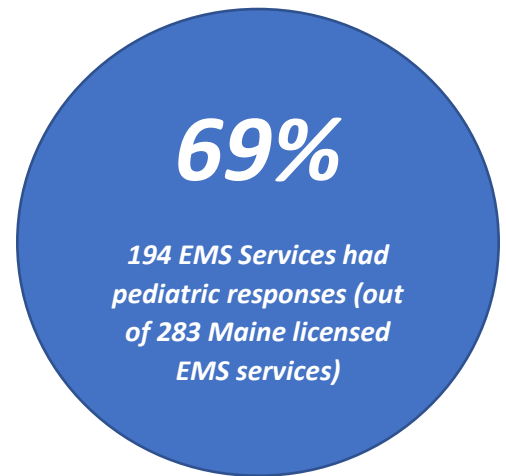
## All Transport Destinations

| Destination   | Transports |
|---|------------|
| (AP) BANGOR INTERNATIONAL AIRPORT                       | 5          |
| (AP) CARIBOU MUNICIPAL AIRPORT                          | 1          |
| (AP) KNOX COUNTY REGIONAL AIRPORT                       | 1          |
| (AP) NORTHERN MAINE REGIONAL AIRPORT                    | 3          |
| (MA) CHILDRENS HOSPITAL BOSTON                          | 7          |
| (MA) MASS GENERAL HOSPITAL                              | 3          |
| (MA) TUFTS MEDICAL CENTER                               | 1          |
| (NH) FRISBIE MEMORIAL HOSPITAL                          | 4          |
| (NH) HAMPSTEAD HOSPITAL                                 | 5          |
| (NH) MEMORIAL HOSPITAL                                  | 5          |
| (NH) OTHER HEALTHCARE FACILITY, INSTITUTION OR LOCATION | 2          |
| (NH) PORTSMOUTH REGIONAL HOSPITAL                       | 2          |
| (NH) WENTWORTH DOUGLASS HOSPITAL                        | 12         |
| A.R. GOULD HOSPITAL                                     | 22         |
| ACADIA HOSPITAL   | 132        |
| AMHC - CALAIS   | 6          |
| AMHC - FT FAIRFIELD                                     | 5          |
| BLUE HILL HOSPITAL                                      | 6          |
| BLUE HILL MEMORIAL HOSPITAL                             | 3          |
| BRIDGTON HOSPITAL                                       | 27         |
| CALAIS REGIONAL HOSPITAL                                | 26         |
| CARY MEDICAL CENTER                                     | 29         |

| <b>Destination</b>                                      | <b>Transports</b> |
|---|-------------------|
| CENTRAL MAINE MEDICAL CENTER                            | 133               |
| CHARLES A DEAN HOSPITAL                                 | 4                 |
| DOWN EAST COMMUNITY HOSPITAL                            | 19                |
| EASTERN MAINE MEDICAL CENTER                            | 276               |
| FRANKLIN MEMORIAL HOSPITAL                              | 53                |
| HOULTON REGIONAL HOSPITAL                               | 28                |
| INLAND HOSPITAL   | 29                |
| LINCOLN COUNTY HEALTH - MILES CAMPUS                    | 20                |
| MAINE COAST HOSPITAL                                    | 16                |
| MAINE COAST MEMORIAL HOSPITAL                           | 1                 |
| MAINE GENERAL MEDICAL CENTER - ALFOND CENTER FOR HEALTH | 129               |
| MAINE GENERAL MEDICAL CENTER - THAYER CENTER FOR HEALTH | 68                |
| MAINE MEDICAL CENTER                                    | 620               |
| MAYO REGIONAL HOSPITAL                                  | 29                |
| MERCY HOSPITAL  | 18                |
| MID COAST HOSPITAL                                      | 80                |
| MILLINOCKET REGIONAL HOSPITAL                           | 9                 |
| MOUNT DESERT ISLAND HOSPITAL                            | 3                 |
| NORTHERN MAINE MEDICAL CENTER                           | 43                |
| OTHER HEALTHCARE FACILITY, INSTITUTION OR LOCATION      | 49                |
| PEN BAY MEDICAL CENTER                                  | 44                |
| PENOBSCOT VALLEY HOSPITAL                               | 7                 |
| REDINGTON FAIRVIEW GENERAL HOSPITAL                     | 75                |
| RUMFORD HOSPITAL  | 29                |
| SAINT MARYS REGIONAL MEDICAL CENTER                     | 120               |
| SEBASTICOOK VALLEY HOSPITAL                             | 19                |
| SMHC - BIDDEFORD MEDICAL CENTER                         | 83                |
| SMHC - SANFORD MEDICAL CENTER                           | 24                |
| SPRING HARBOR HOSPITAL                                  | 101               |
| ST JOSEPH HOSPITAL                                      | 26                |
| STEPHENS MEMORIAL HOSPITAL                              | 68                |
| WALDO COUNTY GENERAL HOSPITAL                           | 35                |
| YORK HOSPITAL   | 9                 |
| (blank)   | 156               |
| <b>Grand Total</b>                                      | <b>2730</b>       |

## Responses by Maine EMS Services, Q1 2019

| Busiest, Quarter 1 2019 |                                  |           |
|-------------------------|----------------------------------|-----------|
|                         | Service                          | Responses |
| 1                       | Northeast Mobile Health Services | 256       |
| 2                       | United Ambulance Service         | 247       |
| 3                       | Delta Ambulance                  | 239       |
| 4                       | Northern Light Medical Transport | 193       |
| 5                       | NorthStar                        | 129       |
| 6                       | MEDCU                            | 121       |
| 7                       | PACE Paramedic Service           | 92        |
| 8                       | Bangor Fire Department           | 81        |
| 9                       | Mayo Regional Hospital EMS       | 69        |
| 10                      | Redington Fairview EMS           | 68        |



### All Responses By Service and Month

| Service                                | January | February | March | TOTAL |
|--|---------|----------|-------|-------|
| Acton Fire - Rescue                    | 0       | 1        | 1     | 2     |
| Albion Fire - Rescue                   | 0       | 1        | 1     | 2     |
| Alfred Rescue Squad                    | 1       | 2        | 1     | 4     |
| Ambulance Service Inc                  | 8       | 4        | 7     | 19    |
| Andover Fire Dept                      | 1       | 0        | 0     | 1     |
| Anson Madison Starks Ambulance Service | 14      | 7        | 16    | 37    |
| Arundel Fire - Rescue                  | 5       | 3        | 0     | 8     |
| Ashland Ambulance Service              | 0       | 1        | 0     | 1     |
| Auburn Fire Department                 | 15      | 19       | 23    | 57    |
| Augusta Fire Department                | 15      | 14       | 21    | 50    |
| Bangor Fire Department                 | 27      | 26       | 28    | 81    |
| Bar Harbor Fire Dept                   | 4       | 0        | 2     | 6     |
| Bates EMS                              | 1       | 2        | 4     | 7     |
| Bath Fire Department                   | 6       | 9        | 5     | 20    |
| Belfast Ambulance & Rescue Service     | 13      | 13       | 12    | 38    |
| Belgrade Fire Department               | 0       | 1        | 1     | 2     |
| Berwick Fire Department                | 4       | 1        | 1     | 6     |
| Bethel Ambulance Service               | 5       | 5        | 2     | 12    |
| Biddeford Ambulance Service            | 22      | 19       | 26    | 67    |
| Boothbay Region Ambulance              | 5       | 1        | 3     | 9     |
| Bowdoin First Responders               | 1       | 0        | 0     | 1     |
| Bowdoinham Fire & Rescue               | 0       | 0        | 2     | 2     |

| <b>Service</b>                         | <b>January</b> | <b>February</b> | <b>March</b> | <b>TOTAL</b> |
|--|----------------|-----------------|--------------|--------------|
| Bremen Rescue First Responders         | 1              | 0               | 0            | 1            |
| Bristol Fire and Rescue                | 1              | 0               | 1            | 2            |
| Brooks Ambulance Inc.                  | 3              | 2               | 2            | 7            |
| Brunswick Fire Department EMS          | 9              | 13              | 9            | 31           |
| Buckfield Rescue Dept.                 | 2              | 3               | 5            | 10           |
| Bucksport Fire Department              | 4              | 5               | 5            | 14           |
| Buxton Fire & Rescue                   | 8              | 3               | 6            | 17           |
| Calais Fire-EMS                        | 3              | 5               | 7            | 15           |
| Canaan Municipal Fire & Rescue         | 1              | 0               | 0            | 1            |
| Cape Elizabeth Fire Rescue             | 4              | 2               | 6            | 12           |
| Caribou Fire - Ambulance               | 13             | 12              | 10           | 35           |
| Carmel Fire & Rescue                   | 2              | 0               | 1            | 3            |
| Casco Fire & Rescue                    | 1              | 1               | 2            | 4            |
| Castine Fire and Rescue                | 2              | 0               | 0            | 2            |
| Central Lincoln County Ambulance       | 16             | 6               | 8            | 30           |
| Charles A Dean Ambulance Service       | 1              | 4               | 1            | 6            |
| Chebeague Island Rescue                | 1              | 0               | 0            | 1            |
| Cherryfield Ambulance Service          | 1              | 0               | 1            | 2            |
| China Rescue Squad                     | 3              | 4               | 2            | 9            |
| Clinton Fire Dept Ambulance Service    | 1              | 1               | 2            | 4            |
| Crown Ambulance                        | 12             | 16              | 9            | 37           |
| Cumberland Fire Department             | 4              | 5               | 2            | 11           |
| Cushing Rescue Squad                   | 1              | 0               | 0            | 1            |
| Dedham Fire Department                 | 0              | 1               | 0            | 1            |
| Delta Ambulance                        | 73             | 80              | 86           | 239          |
| Denny River Volunteer Fire & Ambulance | 2              | 1               | 0            | 3            |
| Dixmont Fire Rescue                    | 0              | 0               | 1            | 1            |
| Durham Fire & Rescue                   | 3              | 0               | 3            | 6            |
| East Millinocket/Lincoln Ambulance     | 5              | 5               | 16           | 26           |
| Eastern Maine Community College        | 0              | 0               | 2            | 2            |
| Eddington Fire Dept                    | 1              | 1               | 0            | 2            |
| Edgecomb Fire Department               | 1              | 1               | 0            | 2            |
| Etna Volunteer Fire and Rescue         | 1              | 0               | 0            | 1            |
| Fairfield Fire Rescue                  | 10             | 11              | 11           | 32           |
| Falmouth Fire - EMS                    | 4              | 3               | 7            | 14           |
| Freeport Fire Department               | 5              | 9               | 8            | 22           |
| Fryeburg Rescue                        | 4              | 5               | 10           | 19           |
| G & H Ambulance Service                | 11             | 9               | 8            | 28           |
| Gardiner Fire & Ambulance Department   | 6              | 12              | 10           | 28           |
| Gorham Fire Department                 | 17             | 9               | 9            | 35           |
| Gouldsboro Fire Department             | 0              | 1               | 0            | 1            |
| Gray Fire - Rescue                     | 5              | 3               | 1            | 9            |

| <b>Service</b>                                 | <b>January</b> | <b>February</b> | <b>March</b> | <b>TOTAL</b> |
|--|----------------|-----------------|--------------|--------------|
| Greenbush Fire Dept                            | 2              | 0               | 3            | 5            |
| Hampden Fire Department                        | 1              | 4               | 4            | 9            |
| Hancock Vol Fire Department                    | 1              | 1               | 0            | 2            |
| Harmony Regional Ambulance Service             | 0              | 1               | 2            | 3            |
| Harpswell Neck Fire & Rescue                   | 1              | 1               | 0            | 2            |
| Harrison Fire - Rescue First Responder Service | 0              | 1               | 0            | 1            |
| Hermon Fire Department                         | 2              | 0               | 2            | 4            |
| Hermon Volunteer Rescue                        | 5              | 8               | 4            | 17           |
| Holden Fire Rescue                             | 0              | 0               | 1            | 1            |
| Hollis Fire - Rescue                           | 3              | 4               | 3            | 10           |
| Houlton Ambulance Service                      | 8              | 4               | 13           | 25           |
| Howland Fire & EMS                             | 8              | 2               | 7            | 17           |
| Hudson Fire Department                         | 0              | 1               | 0            | 1            |
| Industry Fire Department                       | 3              | 0               | 0            | 3            |
| Island Falls Ambulance Service                 | 1              | 0               | 0            | 1            |
| Islesboro Ambulance Service                    | 0              | 2               | 0            | 2            |
| Jackman-Moose River Fire & Rescue Department   | 3              | 0               | 1            | 4            |
| Jefferson Fire and Rescue                      | 0              | 0               | 1            | 1            |
| Kennebunk Fire Rescue                          | 7              | 7               | 6            | 20           |
| Lebanon Fire-EMS                               | 0              | 5               | 6            | 11           |
| Levant Fire Department                         | 2              | 2               | 0            | 4            |
| Liberty Volunteer Ambulance Service            | 2              | 2               | 0            | 4            |
| Limerick Rescue                                | 4              | 4               | 1            | 9            |
| Limington Fire and EMS                         | 0              | 5               | 2            | 7            |
| Lisbon Emergency Inc.                          | 19             | 7               | 4            | 30           |
| Litchfield Fire & Rescue                       | 0              | 1               | 0            | 1            |
| Machias Ambulance Service                      | 3              | 1               | 2            | 6            |
| Madawaska Ambulance Service                    | 6              | 1               | 1            | 8            |
| Maine Medical Center                           | 20             | 25              | 20           | 65           |
| Mayo Regional Hospital EMS                     | 22             | 26              | 21           | 69           |
| Med-Care Ambulance Service                     | 24             | 11              | 8            | 43           |
| MEDCU  | 40             | 34              | 47           | 121          |
| Memorial Ambulance Corps                       | 1              | 0               | 1            | 2            |
| Mid Coast Hospital Interceptor                 | 1              | 1               | 0            | 2            |
| Milford Fire Department                        | 1              | 0               | 0            | 1            |
| Millinocket Fire Department Ambulance Service  | 3              | 0               | 2            | 5            |
| Minot Fire Department                          | 1              | 0               | 0            | 1            |
| Moosabec Ambulance                             | 3              | 1               | 1            | 5            |
| Mount Vernon Rescue                            | 0              | 0               | 2            | 2            |
| Naples Fire Department                         | 0              | 0               | 4            | 4            |
| New Gloucester Fire & Rescue                   | 3              | 2               | 1            | 6            |
| New Sharon Fire Rescue                         | 1              | 0               | 0            | 1            |

| <b>Service</b>                           | <b>January</b> | <b>February</b> | <b>March</b> | <b>TOTAL</b> |
|--|----------------|-----------------|--------------|--------------|
| Newburgh Rescue                          | 1              | 0               | 0            | 1            |
| Newport Fire Department                  | 0              | 1               | 3            | 4            |
| Nobleboro First Responders               | 1              | 0               | 0            | 1            |
| North Berwick Rescue Squad Inc           | 2              | 2               | 2            | 6            |
| North Yarmouth Fire Rescue               | 2              | 0               | 0            | 2            |
| Northeast Harbor Ambulance Service, Inc. | 0              | 0               | 1            | 1            |
| Northeast Mobile Health Services         | 96             | 77              | 83           | 256          |
| Northern Light Medical Transport         | 74             | 63              | 56           | 193          |
| Northport First Responders               | 0              | 0               | 1            | 1            |
| NorthStar                                | 46             | 35              | 48           | 129          |
| Oakland Fire - Rescue                    | 1              | 3               | 2            | 6            |
| Old Orchard Beach EMS                    | 7              | 2               | 8            | 17           |
| Old Town Fire Dept                       | 14             | 7               | 12           | 33           |
| Orono Fire - Rescue                      | 4              | 7               | 7            | 18           |
| Orrington Fire Dept.                     | 0              | 0               | 3            | 3            |
| Oxford Fire Rescue                       | 2              | 0               | 1            | 3            |
| PACE Paramedic Service                   | 28             | 30              | 34           | 92           |
| Passamaquoddy Fire & Rescue              | 3              | 2               | 4            | 9            |
| Patten Ambulance Service                 | 3              | 2               | 6            | 11           |
| Peninsula Ambulance Corps                | 11             | 1               | 2            | 14           |
| Petit Manan Ambulance                    | 1              | 0               | 1            | 2            |
| Pleasant River Ambulance Service         | 0              | 3               | 3            | 6            |
| Plymouth Fire Department                 | 0              | 0               | 1            | 1            |
| Poland Fire Rescue                       | 3              | 4               | 5            | 12           |
| Presque Isle Fire Department             | 8              | 6               | 4            | 18           |
| Raymond Rescue                           | 3              | 4               | 2            | 9            |
| Redington Fairview EMS                   | 23             | 18              | 27           | 68           |
| Richmond Fire Department                 | 0              | 0               | 2            | 2            |
| Rockland Fire & EMS                      | 8              | 5               | 4            | 17           |
| Rockwood Fire - EMS                      | 1              | 0               | 0            | 1            |
| Rome Fire & Rescue                       | 0              | 1               | 0            | 1            |
| Sabattus Fire Rescue                     | 1              | 1               | 0            | 2            |
| Saco Fire Department                     | 13             | 9               | 13           | 35           |
| Sacopee Rescue Inc                       | 6              | 5               | 9            | 20           |
| Sanford Fire Dept Ambulance Service      | 12             | 7               | 8            | 27           |
| Scarborough Fire Department              | 12             | 10              | 7            | 29           |
| Searsport Ambulance Service              | 4              | 1               | 4            | 9            |
| Sebago EMS                               | 1              | 3               | 1            | 5            |
| Sebasticook Valley Hospital Ambulance    | 7              | 5               | 8            | 20           |
| Shapleigh Rescue Squad                   | 0              | 0               | 2            | 2            |
| Sidney Rescue                            | 0              | 0               | 1            | 1            |
| Sipayik Ambulance Corps                  | 4              | 2               | 5            | 11           |



| <b>Service</b>                                   | <b>January</b> | <b>February</b> | <b>March</b> | <b>TOTAL</b> |
|--|----------------|-----------------|--------------|--------------|
| Skowhegan Fire Department                        | 0              | 1               | 0            | 1            |
| South Portland Fire Rescue                       | 13             | 13              | 16           | 42           |
| South Thomaston Ambulance Service                | 1              | 1               | 0            | 2            |
| Southwest Harbor / Tremont Ambulance Service Inc | 1              | 1               | 1            | 3            |
| St George Ambulance                              | 2              | 1               | 0            | 3            |
| Standish Fire - EMS                              | 14             | 2               | 10           | 26           |
| Stetson Fire Rescue                              | 0              | 1               | 0            | 1            |
| Stewart's Ambulance                              | 0              | 0               | 11           | 11           |
| Stockton Springs Ambulance Service               | 2              | 2               | 0            | 4            |
| Stoneham Rescue Service                          | 0              | 1               | 0            | 1            |
| Thomaston Ambulance                              | 2              | 2               | 1            | 5            |
| Three Rivers Ambulance Service                   | 3              | 5               | 4            | 12           |
| Topsham Fire - EMS                               | 7              | 6               | 3            | 16           |
| Town of Lisbon Fire Service                      | 1              | 0               | 1            | 2            |
| Town of Lyman DBA / Goodwins Mills Fire-Rescue   | 7              | 3               | 1            | 11           |
| Turner Rescue                                    | 6              | 4               | 7            | 17           |
| Union Ambulance Service                          | 1              | 0               | 2            | 3            |
| United Ambulance Service                         | 75             | 87              | 85           | 247          |
| Unity Volunteer Ambulance Corps                  | 5              | 3               | 5            | 13           |
| University of New England                        | 0              | 2               | 0            | 2            |
| University Volunteer Ambulance Corps             | 4              | 14              | 9            | 27           |
| Upper Kennebec Valley Ambulance                  | 2              | 0               | 2            | 4            |
| Van Buren Ambulance Service                      | 1              | 2               | 4            | 7            |
| Vassalboro First Responders                      | 3              | 4               | 2            | 9            |
| Veazie Fire Department                           | 0              | 1               | 0            | 1            |
| Vinalhaven Ambulance                             | 1              | 1               | 1            | 3            |
| Waldoboro Emergency Medical Services             | 4              | 7               | 8            | 19           |
| Wales Rescue                                     | 0              | 1               | 2            | 3            |
| Warren Rescue                                    | 2              | 1               | 3            | 6            |
| Waterboro Fire Dept Rescue                       | 4              | 5               | 6            | 15           |
| Waterville Fire Department                       | 8              | 10              | 10           | 28           |
| WCEMSA dba Downeast EMS                          | 10             | 7               | 6            | 23           |
| Wells Emergency Medical Services                 | 2              | 4               | 12           | 18           |
| Wells Fire Department Rescue                     | 0              | 0               | 1            | 1            |
| Westbrook Fire Rescue                            | 10             | 15              | 19           | 44           |
| Westport Volunteer Fire Dept First Responders    | 0              | 1               | 0            | 1            |
| Whitefield Fire Department Rescue                | 1              | 0               | 3            | 4            |
| Windham Fire Rescue                              | 6              | 7               | 14           | 27           |
| Windsor Fire & Rescue                            | 1              | 0               | 0            | 1            |
| Winslow Fire Department Rescue                   | 1              | 3               | 4            | 8            |
| Winterport Volunteer Ambulance Service           | 4              | 5               | 5            | 14           |
| Winthrop Ambulance Service                       | 9              | 10              | 7            | 26           |

| <b>Service</b>                       | <b>Janaury</b> | <b>February</b> | <b>March</b> | <b>TOTAL</b> |
|--------------------------------------|----------------|-----------------|--------------|--------------|
| Wiscasset Ambulance Service          | 11             | 3               | 2            | <b>16</b>    |
| Woolwich Fire Department             | 1              | 1               | 2            | <b>4</b>     |
| Yarmouth Fire Rescue                 | 6              | 8               | 10           | <b>24</b>    |
| York Ambulance Association Inc       | 13             | 8               | 12           | <b>33</b>    |
| York Beach Volunteer Fire Department | 1              | 0               | 0            | <b>1</b>     |
| <b>Grand Total</b>                   | <b>1237</b>    | <b>1095</b>     | <b>1248</b>  | <b>3580</b>  |

-End of Report-

*This project is supported by the Health Resources and Services Administration (HRSA), Maternal and Child Health Bureau (MCHB), Emergency Medical Services for Children (EMSC) State Partnership grant program, Grant # H33MC31622. This information or content and conclusions are those of the author and should not be construed as the official position or policy of, nor should any endorsements be inferred by HRSA, HHS or the U.S. Government.*