



# Maine EMS for Children

## Statewide MEFIRS Pediatric Data

### Quarter 2 2019 (Apr. 1 – Jun. 30)

(Updated 8/8/19)



The Maine EMS for Children Program is pleased to share this data collected from the Maine EMS & Fire Incident Reporting System (MEFIRS) and via EMSCharts for Lifeflight of Maine.. The data included is as reported by the EMS providers across Maine via state required patient care reports. Data is included for patients age 18 and under only. Visit [www.maine.gov/ems](http://www.maine.gov/ems) for further information.

Thank you to the EMS providers of Maine for your efforts and diligence in documenting your patient care to help us allow for better system wide improvements. Please feel free to reach out with comments and questions.

Never stop learning.

Marc Minkler  
Program Manager, Maine EMS-C

*This project is supported by the Health Resources and Services Administration (HRSA), Maternal and Child Health Bureau (MCHB), Emergency Medical Services for Children (EMSC) State Partnership grant program, Grant # H33MC31622. This information or content and conclusions are those of the author and should not be construed as the official position or policy of, nor should any endorsements be inferred by HRSA, HHS or the U.S. Government.*

# Pediatric EMS Responses Q2, 2019

3,220 EMS RESPONSES  
 April - 1042  
 May - 1080  
 June - 1098



## Responses by County

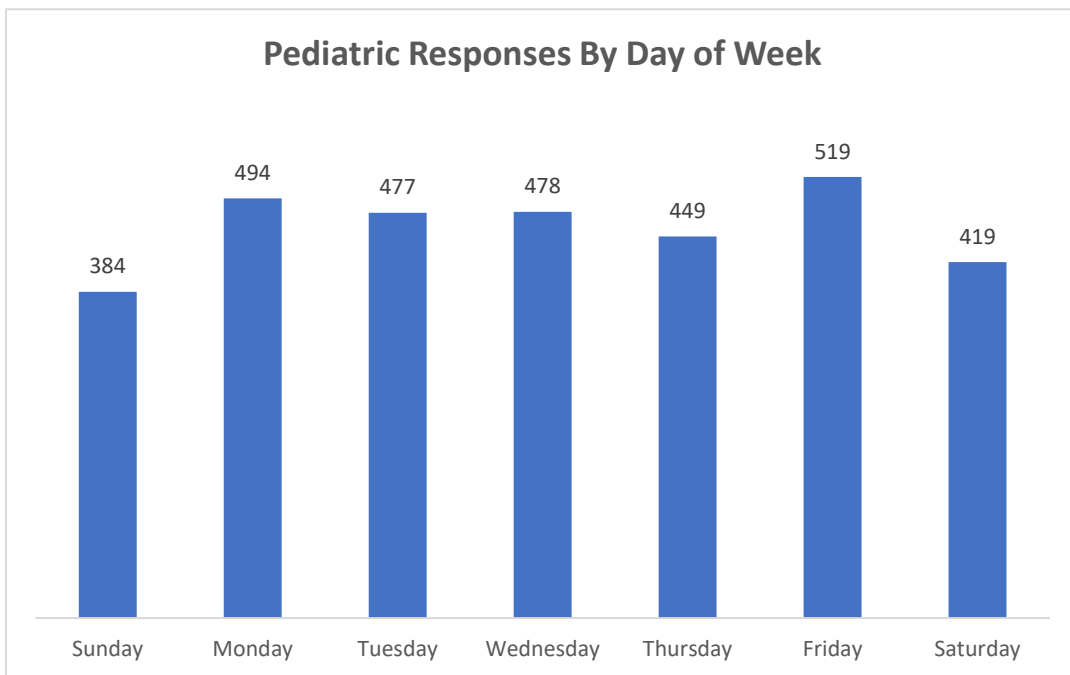
County	Responses
Androscoggin	350
Aroostook	158
Cumberland	677
Franklin	67
Hancock	109
Kennebec	331
Knox	95
Lincoln	56
Oxford	146
Penobscot	375
Piscataquis	45
Sagadahoc	45
Somerset	140
Waldo	55
Washington	75
York	457
Out of State	8
(blank)	31
<b>Grand Total</b>	<b>3220</b>

Level of Assessment & Care	Responses	%
ALS	1101	34%
BLS	1841	57%
Community Paramedicine	6	0%
None Provided	44	1%
PIFT	37	1%
Specialty Care Transport	112	3%
(blank)	33	2%
<b>Grand Total</b>	<b>3220</b>	<b>100%</b>

*57% of responses were managed at the BLS level, while 73% of responses had a paramedic available.*

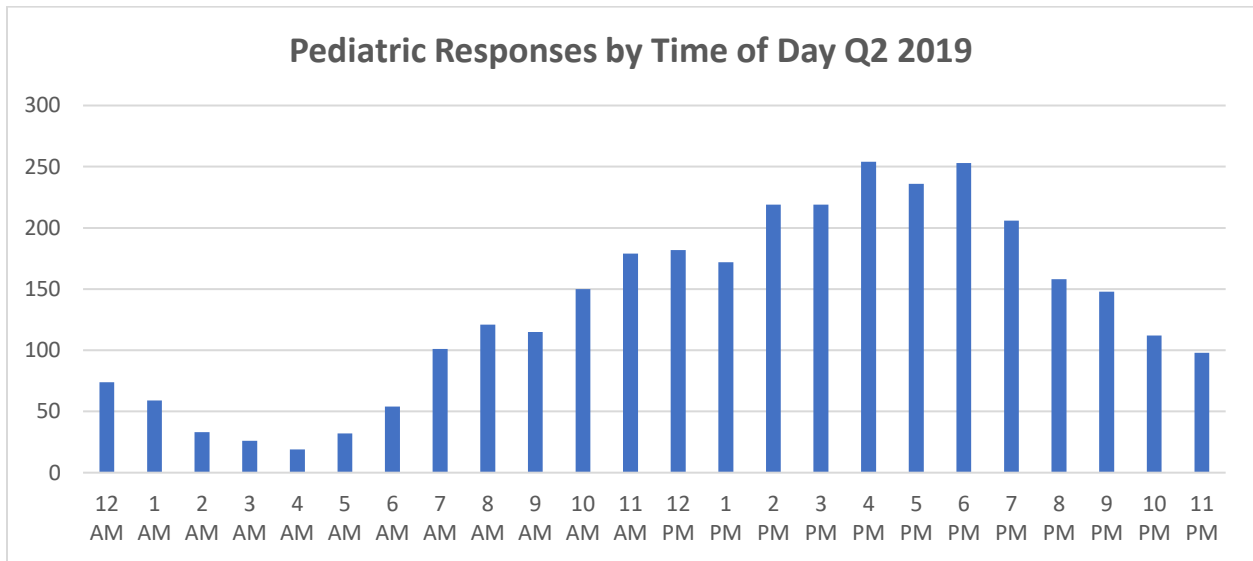
# Responses By Day of Week

Day	Responses
Sunday	384
Monday	494
Tuesday	477
Wednesday	478
Thursday	449
Friday	519
Saturday	419
<b>Grand Total</b>	<b>3220</b>



*Statistically, the most likely time of a pediatric call is between 4 and 5pm on a Friday .*

# Responses By Time of Day, Q2 2019



Incident Time	Responses
0000-0059	74
0100-0159	59
0200-0259	33
0300-0359	26
0400-0459	19
0500-0559	32
0600-0659	54
0700-0759	101
0800-0859	121
0900-0959	115
1000-1059	150
1100-1159	179
1200-1259	182
1300-1359	172
1400-1459	219
1500-1559	219
1600-1659	254
1700-1759	236
1800-1859	253
1900-1959	206
2000-2059	158
2100-2159	148
2200-2259	112
2300-2359	98
<b>Grand Total</b>	<b>3220</b>

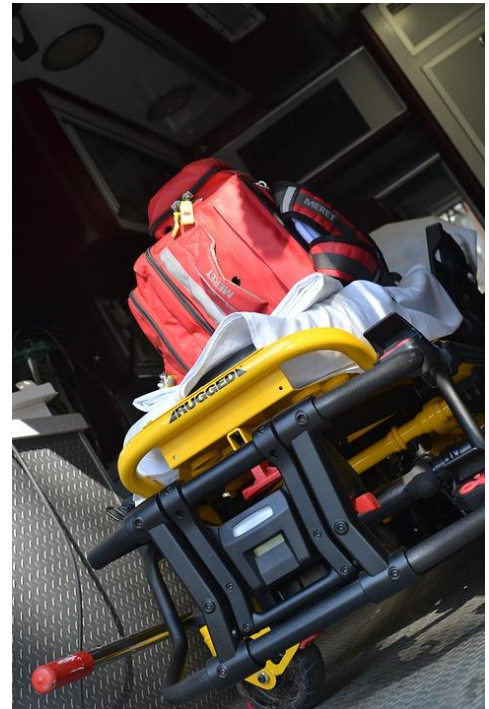


# Disposition of Pediatric Responses, Q2 2019

Disposition	Responses
Assist – Other Unit or Agency	21
Assist – Public	5
Canceled (Prior to Arrival At Scene)	9
Community Paramedicine Visit	7
Dead at Scene - No Resuscitation Attempted	3
Dead at Scene - Resuscitation Attempted	0
Paramedic Intercept	20
No Patient Found/Contact	3
Patient Evaluated, No Treatment/Transport Required	217
Patient Refused Evaluation/Care/Transport	89
Patient Treated - Refused Transport	417
Standby - No Patient Contact	2
Treated - Transported by this EMS Unit	2457
Treated, Transferred Care to Another EMS Unit	145
<b>Grand Total</b>	<b>3395*</b>

\*There were 175 patients who had more than one service respond.

21.3% of responses for a pediatric patient resulted in a non-transport.



## Patient Gender

Gender	Responses	%
Female	1557	48.0%
Female to Male	2	0.3%
Male	1642	51.0%
Male to Female	1	0.0%
Unknown (Unable to Determine)	17	0.6%
(blank)	1	0.0%
<b>Grand Total</b>	<b>3220</b>	<b>100.0%</b>

# Age Breakdown of Patients, Q2 2019

## All Ages (0-18)

Age	Responses
0-1	325
1	267
2	128
3	102
4	98
5	61
6	74
7	92
8	100
9	88
10	96
11	129
12	129
13	178
14	204
15	245
16	265
17	374
18	4364
Blank	1
<b>Total</b>	<b>3220</b>

## 1 Month - 1 Year

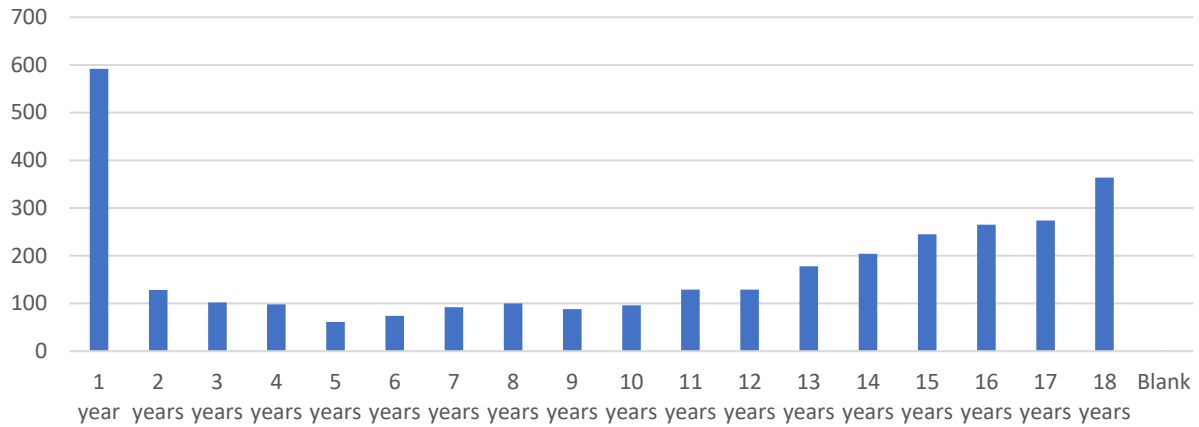
Age in Months	Responses
1	25
2	28
3	13
4	20
5	20
6	19
7	13
8	26
9	21
10	12
11	19
<b>Total</b>	<b>216</b>

## Under 1 Month

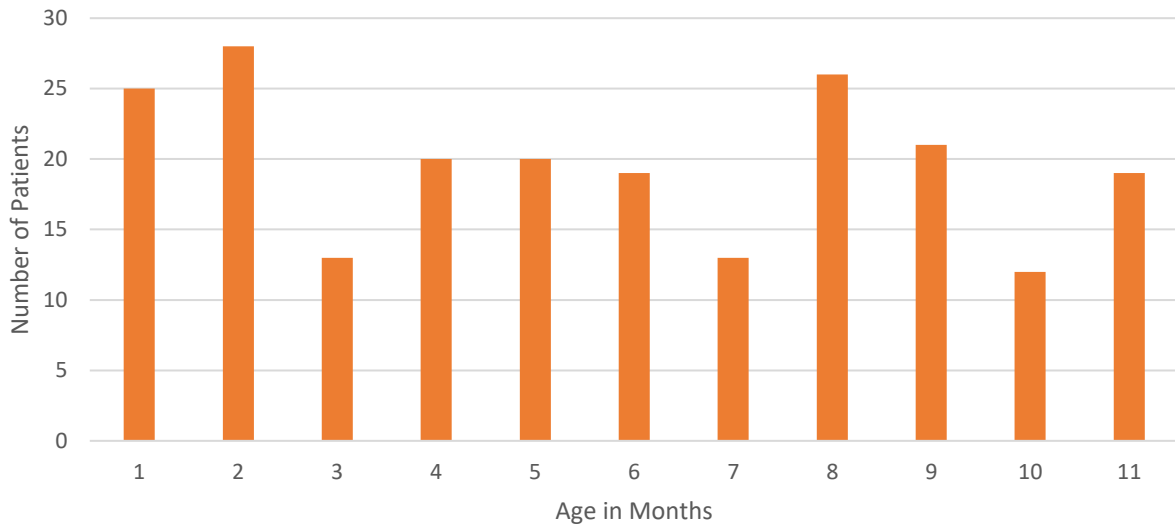
Age in Days	Responses
1	34
2	11
3	6
4	3
5	4
6	3
7	6
8	1
9	6
10	3
11	5
12	3
13	1
14	1
15	4
16	5
17	1
18	0
19	1
20	1
21	1
22	2
23	2
24	1
25	1
26	1
27	0
28	1
29	1
30	0
<b>TOTAL</b>	<b>109</b>



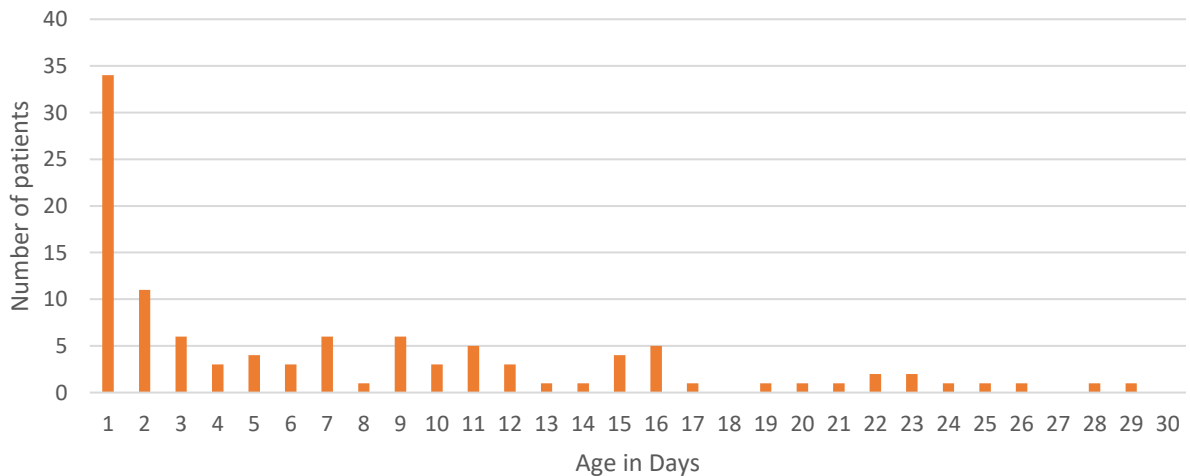
### All Pediatric Patients By Age Q2, 2019



### Number of Pediatric Patients Between 1 month and 1 year old



### Number of pediatric patients under 1 month old



# Primary Impression, Q2 2019

## Top 10 Primary Impressions

Primary Impression	Patients
Behavioral - Anxiety /Psychiatric Episode	557
No findings or Complaints	413
Seizure(s)	220
Injury - Head/Ears/Eyes/Nose/Mouth/Throat	194
Behavioral - Suicide attempt	126
Cold/Fever/Influenza	114
Dyspnea/Distress	107
Injury - Upper Extremity	102
Bedridden/Malaise/Weakness	94
Injury - Upper Extremity	93



## All Primary Impressions

Primary Impression	Patients
<b>AIRWAY</b>	
Choking	34
Epiglottitis	2
Foreign Body - Respiratory Tract	5
Injury – Inhalation	1
Pneumothorax – Traumatic	1
<b>CARDIAC</b>	
Cardiac – Arrest	7
Cardiac – Arrhythmia	11
Cardiac - Chest Pain	6
MI - No ST Elevation	1
Vascular Disease	2
<b>ENVIRONMENTAL</b>	
Drowning	7
Heat Exhaustion	4
Hypothermia	4
<b>MEDICAL</b>	
Acute Abdomen	11
Allergic Reaction	47
Altered Mental Status	29
Anemia	3
Appendicitis	32



Bedridden/Malaise/Weakness	94
Blood in Stool	2
Cancer	1
Cold/Fever/Influenza	114
Constipation	4
Dehydration	14
Diarrhea	3
Foreign Body - Genitourinary Tract	1
Foreign Body/Obstruction - GI Tract	16
GERD	1
Headache/Migraine	28
Hyperglycemia	22
Hypoglycemia	11
Infectious Disease	5
Medical Device Failure	2
Meningitis	2
Nausea and/or Vomiting	43
Sepsis	6
Shock - Anaphylactic	6
Sickle Cell Crisis	2
Skin - Edema/Rash	12
Syncope	66
Urinary Tract Infection	3
Vision - Disturbance	2
<b>NEUROLOGICAL</b>	
Quadriplegia	1
Seizure(s)	220
Stroke/CVA	1
<b>OB/GYN</b>	
Labor and Delivery	4
Miscarriage	1
Newborn - Meconium Aspiration	1
Newborn - Premature	9
Newborn - Respiratory Distress	14
Pregnancy w/ Contractions	2
<b>RESPIRATORY</b>	
Arrest	2
Asthma/Bronchospasm	26
Croup	25
Dyspnea/Distress	107
Pneumonia/Bronchitis	43
R.S.V.	8
Suffocation	1

<b>TOXINS</b>	
Alcohol Use	26
Overdose/Drug Ingestion (Opioid)	2
Overdose/Drug Ingestion (Non-Opioid)	58
<b>TRAUMA</b>	
Burn, General	25
Concussion	33
Epistaxis	3
Hemorrhage – Epidural	2
Hemorrhage - Intracranial Bleeding, Non-Traumatic	1
Hemorrhage - Postpartum	1
Hemorrhage - Subarachnoid, Traumatic	1
Hemorrhage - Subdural, Traumatic	1
Injury – Abdomen	9
Injury – Back	10
Injury – Chest	11
Injury - Head/Ears/Eyes/Nose/Mouth/Throat	194
Injury - Hip/Genitals	5
Injury - Lower Extremity	93
Injury - Upper Extremity	102
Injury, Unspecified	23
Multiple Injuries	53
Pain - Abdominal	87
Pain - Acute	21
Pain - Back	27
Pain - Chest (Non-Cardiac)	19
Pain - Eye/Ear/Nose/Mouth/Throat	19
Pain - Hip/Pelvis	8
Pain - Lower Extremity	61
Pain - Non-specific	16
Pain - Upper Extremity	52
Shock - Traumatic	1
<b>OTHER</b>	
Behavioral - Anxiety /Psychiatric Episode	557
Behavioral - Suicide Attempt	126
No findings or Complaints	413
(blank)	28
<b>Grand Total</b>	<b>3220</b>

# Destination of Pediatric Transports, Q2 2019

## *Top 10 Destinations*

Destination	Transports
MAINE MEDICAL CENTER	580
EASTERN MAINE MEDICAL CENTER	239
CENTRAL MAINE MEDICAL CENTER	130
ACADIA HOSPITAL	122
SAINT MARYS REGIONAL MEDICAL CENTER	118
MAINE GENERAL MEDICAL CENTER - ALFOND CENTER FOR HEALTH	114
SPRING HARBOR HOSPITAL	106
SMHC - BIDDEFORD MEDICAL CENTER	80
MAINE GENERAL MEDICAL CENTER - THAYER CENTER FOR HEALTH	68
MID COAST HOSPITAL	62

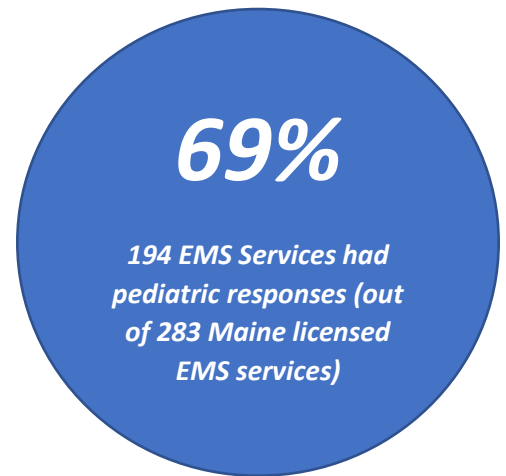
## *All Transport Destinations*

Destination	Patients	%
(AP) BANGOR INTERNATIONAL AIRPORT	2	0.06%
(AP) CARIBOU MUNICIPAL AIRPORT	2	0.06%
(AP) KNOX COUNTY REGIONAL AIRPORT	1	0.03%
(AP) NORTHERN AROOSTOOK REGIONAL AIRPORT	1	0.03%
(AP) NORTHERN MAINE REGIONAL AIRPORT	4	0.12%
(MA) BOSTON MEDICAL CENTER	1	0.03%
(MA) CHILDRENS HOSPITAL BOSTON	18	0.56%
(MA) MASS EYE & EAR INFIRMARY	1	0.03%
(MA) MASS GENERAL HOSPITAL	6	0.19%
(MA) OTHER HEALTHCARE FACILITY, INSTITUTION OR LOCATION	3	0.09%
(MA) SHRINERS HOSPITAL FOR CHILDREN - BOSTON	1	0.03%
(NH) FRISBIE MEMORIAL HOSPITAL	2	0.06%
(NH) HAMPSTEAD HOSPITAL	8	0.25%
(NH) MEMORIAL HOSPITAL	2	0.06%
(NH) PORTSMOUTH REGIONAL HOSPITAL	14	0.43%
(NH) WENTWORTH DOUGLASS HOSPITAL	21	0.65%
A.R. GOULD HOSPITAL	31	0.96%
ACADIA HOSPITAL	122	3.79%
AMHC - CALAIS	2	0.06%
AMHC - FT FAIRFIELD	4	0.12%
BLUE HILL HOSPITAL	7	0.22%
BRIDGTON HOSPITAL	23	0.71%

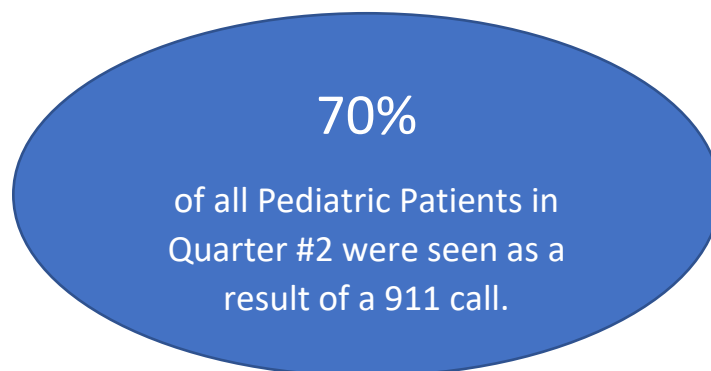
CALAIS REGIONAL HOSPITAL	28	0.87%
CARY MEDICAL CENTER	19	0.59%
CENTRAL MAINE MEDICAL CENTER	130	4.04%
CHARLES A DEAN HOSPITAL	1	0.03%
DOWN EAST COMMUNITY HOSPITAL	13	0.40%
EASTERN MAINE MEDICAL CENTER	239	7.42%
FRANKLIN MEMORIAL HOSPITAL	32	0.99%
HOULTON REGIONAL HOSPITAL	18	0.56%
INLAND HOSPITAL	25	0.78%
LINCOLN COUNTY HEALTH - MILES CAMPUS	15	0.47%
MAINE COAST HOSPITAL	29	0.90%
MAINE COAST MEMORIAL HOSPITAL	5	0.16%
MAINE GENERAL MEDICAL CENTER - ALFOND CENTER FOR HEALTH	114	3.54%
MAINE GENERAL MEDICAL CENTER - THAYER CENTER FOR HEALTH	68	2.11%
MAINE MEDICAL CENTER	580	18.01%
MAYO REGIONAL HOSPITAL	27	0.84%
MERCY HOSPITAL	20	0.62%
MID COAST HOSPITAL	62	1.93%
MILLINOCKET REGIONAL HOSPITAL	9	0.28%
MOUNT DESERT ISLAND HOSPITAL	5	0.16%
NORTHERN MAINE MEDICAL CENTER	43	1.34%
OTHER HEALTHCARE FACILITY, INSTITUTION OR LOCATION	68	2.11%
PEN BAY MEDICAL CENTER	39	1.21%
PENOBSCOT VALLEY HOSPITAL	10	0.31%
REDINGTON FAIRVIEW GENERAL HOSPITAL	60	1.86%
RUMFORD HOSPITAL	20	0.62%
SAINT MARYS REGIONAL MEDICAL CENTER	118	3.66%
SEBASTICOOK VALLEY HOSPITAL	26	0.81%
SMHC - BIDDEFORD MEDICAL CENTER	80	2.48%
SMHC - SANFORD MEDICAL CENTER	32	0.99%
SPRING HARBOR HOSPITAL	106	3.29%
ST JOSEPH HOSPITAL	30	0.93%
STEPHENS MEMORIAL HOSPITAL	32	0.99%
WALDO COUNTY GENERAL HOSPITAL	15	0.47%
YORK HOSPITAL	21	0.65%
(blank) (includes non-transport)	805	25.00%
<b>Grand Total</b>	<b>3220</b>	<b>100.00%</b>

## Responses by Maine EMS Services, Q2 2019

Busiest, Quarter 2 2019		
	Service	Responses
1	Northeast Mobile Health Services	261
2	Delta Ambulance	225
3	United Ambulance Service	214
4	Northern Light Medical Transport	182
5	MEDCU	139
6	NorthStar	81
7	Bangor Fire Department	71
8	Maine Medical Center	71
9	Auburn Fire Department	69
10	Mayo Regional Hospital EMS	62



Type of Response	Patients	%
911 Response (Scene)	2256	70.06%
Community Paramedicine	7	0.22%
Intercept	17	0.53%
Interfacility Transport	599	18.60%
Medical Transport	174	5.40%
Mutual Aid	17	0.53%
PIFT (Paramedic Interfacility Transfer)	26	0.81%
Public Assistance/Other Not Listed	8	0.25%
SCT (Specialty Care Transport)	107	3.32%
Standby	8	0.25%
(blank)	1	0.03%
<b>Grand Total</b>	<b>3220</b>	<b>100.00%</b>



## Medications Administered to Pediatric Patients, Q2, 2019

Medication Administered	Patients	Medication Administered	Patients
3% Saline	1	Hydromorphone	1
Acetaminophen	4	Ibuprofen	1
Acetylcysteine/Mucomyst	1	Insulin	1
Activated Charcoal (without sorbitol)	1	Ipratropium	1
Adenosine	2	Ketamine	9
Albuterol	35	Lactated Ringers	6
Ampicillin	1	Lidocaine	2
Aspirin	3	Lorazepam/Ativan	4
Cefazolin	2	Methylprednisolone	3
Cefepime [Maxipime]	1	Midazolam	30
Ceftriaxone/Rocephin	5	Morphine Sulfate	7
Clindamycin	1	Naloxone	2
Dexamethasone	4	Nitroglycerin	2
Dextrose 10 %	8	Nitrous Oxide	2
Dextrose 5 %	10	Normal Saline	88
Diphenhydramine	13	Ondansetron	50
Dopamine	1	Oxygen	70
DuoNeb/Combivent	14	Potassium Chloride	5
Epinephrine 1 MG/1ML (1:1000)	7	Propofol	4
Epinephrine, Racemic	3	Rocuronium	5
Etomidate	1	Terbutaline	1
Fentanyl	87	Vancomycin	5
Flagyl	4	Vitamin K	1
Glucose Oral Gel	4	Zosyn	1
Heparin	1	<b>Grand Total</b>	<b>515</b>

### Top 10 Medications Administered

Medication Administered	Patients
Normal Saline	88
Fentanyl	87
Oxygen	70
Ondansetron	50
Albuterol	35
Midazolam	30
DuoNeb/Combivent	14
Diphenhydramine	13
Dextrose 5 %	10
Ketamine	9

## *All Responses By Service and Month*

<b>Service</b>	<b>Responses</b>	<b>%</b>
Acton Fire - Rescue	4	0.12%
Albion Fire - Rescue	1	0.03%
Alfred Rescue Squad	3	0.09%
Ambulance Service Inc	16	0.47%
American Ambulance Service	3	0.09%
Anson Madison Starks Ambulance Service	14	0.41%
Arundel Fire - Rescue	6	0.18%
Ashland Ambulance Service	1	0.03%
Auburn Fire Department	69	2.03%
Augusta Fire Department	49	1.44%
Bangor Fire Department	71	2.09%
Bar Harbor Fire Dept	4	0.12%
Bates EMS	4	0.12%
Bath Fire Department	15	0.44%
Bath Iron Works Rescue	1	0.03%
Belfast Ambulance & Rescue Service	23	0.68%
Belgrade Fire Department	4	0.12%
Berwick Fire Department	10	0.29%
Bethel Ambulance Service	3	0.09%
Biddeford Ambulance Service	45	1.33%
Boothbay Region Ambulance	2	0.06%
Bowdoinham Fire & Rescue	3	0.09%
Bristol Fire and Rescue	1	0.03%
Brooks Ambulance Inc.	1	0.03%
Brunswick Fire Department EMS	40	1.18%
Buckfield Rescue Dept.	16	0.47%
Bucksport Fire Department	10	0.29%
Buxton Fire & Rescue	12	0.35%
Calais Fire-EMS	16	0.47%
Canaan Municipal Fire & Rescue	1	0.03%
Cape Elizabeth Fire Rescue	7	0.21%
Caribou Fire - Ambulance	24	0.71%
Carmel Fire & Rescue	8	0.24%
Casco Fire & Rescue	9	0.27%
Castine Fire and Rescue	1	0.03%
Central Lincoln County Ambulance	20	0.59%
Charles A Dean Ambulance Service	6	0.18%
Chebeague Island Rescue	1	0.03%
Cherryfield Ambulance Service	1	0.03%
China Rescue Squad	6	0.18%

<b>Service</b>	<b>Responses</b>	<b>%</b>
Clinton Fire Dept Ambulance Service	7	0.21%
Cranberry Isles Rescue	1	0.03%
Crown Ambulance	32	0.94%
Cumberland Fire Department	15	0.44%
Cundy's Harbor Fire Dept	2	0.06%
Dedham Fire Department	1	0.03%
Delta Ambulance	225	6.63%
Denny River Volunteer Fire & Ambulance	4	0.12%
Dixmont Fire Rescue	1	0.03%
Durham Fire & Rescue	6	0.18%
East Millinocket/Lincoln Ambulance	37	1.09%
Eddington Fire Dept	4	0.12%
Edgecomb Fire Department	1	0.03%
Etna Volunteer Fire and Rescue	1	0.03%
Fairfield Fire Rescue	19	0.56%
Falmouth Fire - EMS	15	0.44%
Freeport Fire Department	12	0.35%
Fryeburg Rescue	14	0.41%
G & H Ambulance Service	18	0.53%
Gardiner Fire & Ambulance Department	28	0.82%
Gorham Fire Department	34	1.00%
Gouldsboro Fire Department	3	0.09%
Gray Fire - Rescue	9	0.27%
Greene Fire Dept Rescue	2	0.06%
Hampden Fire Department	9	0.27%
Hancock Vol Fire Department	2	0.06%
Harmony Regional Ambulance Service	3	0.09%
Harpswell Neck Fire & Rescue	2	0.06%
Harrison Fire - Rescue First Responder Service	3	0.09%
Hermon Fire Department	4	0.12%
Hermon Volunteer Rescue	8	0.24%
Holden Fire Rescue	9	0.27%
Hollis Fire - Rescue	8	0.24%
Houlton Ambulance Service	25	0.74%
Howland Fire & EMS	23	0.68%
Industry Fire Department	1	0.03%
Jackman-Moose River Fire & Rescue Department	2	0.06%
Jay Fire and Rescue	1	0.03%
Jefferson Fire and Rescue	3	0.09%
Kennebunk Fire Rescue	15	0.44%
Kennebunkport EMS	9	0.27%
Kingfield Fire - Rescue	2	0.06%



<b>Service</b>	<b>Responses</b>	<b>%</b>
Lebanon Fire-EMS	14	0.41%
Levant Fire Department	1	0.03%
Liberty Volunteer Ambulance Service	2	0.06%
Lifeflight of Maine	46	1.36%
Limerick Rescue	5	0.15%
Limington Fire and EMS	10	0.29%
Lisbon Emergency Inc.	26	0.77%
Litchfield Fire & Rescue	1	0.03%
Long Island Volunteer Rescue	2	0.06%
Lowell Fire and Rescue Department	1	0.03%
Machias Ambulance Service	6	0.18%
Madawaska Ambulance Service	9	0.27%
Maine Medical Center	71	2.09%
Mariaville Volunteer Fire Department	2	0.06%
Mattawamkeag Rescue	1	0.03%
Mayo Regional Hospital EMS	62	1.83%
Mechanic Falls Fire Department	1	0.03%
Med-Care Ambulance Service	36	1.06%
MEDCU	139	4.10%
Memorial Ambulance Corps	2	0.06%
Mid Coast Hospital Interceptor	6	0.18%
Milford Fire Department	3	0.09%
Millinocket Fire Department Ambulance Service	8	0.24%
Minot Fire Department	3	0.09%
Moosabec Ambulance	2	0.06%
Naples Fire Department	12	0.35%
New Gloucester Fire & Rescue	9	0.27%
New Sharon Fire Rescue	2	0.06%
Newburgh Rescue	1	0.03%
Newfield Rescue Squad	2	0.06%
North Berwick Rescue Squad Inc	9	0.27%
North Haven EMS	1	0.03%
North Yarmouth Fire Rescue	10	0.29%
Northeast Harbor Ambulance Service, Inc.	5	0.15%
Northeast Mobile Health Services	261	7.69%
Northern Light Medical Transport	182	5.36%
NorthStar	81	2.39%
Oakland Fire - Rescue	8	0.24%
Ogunquit Fire Rescue	6	0.18%
Old Orchard Beach EMS	25	0.74%
Old Town Fire Dept	25	0.74%

<b>Service</b>	<b>Responses</b>	<b>%</b>
Orono Fire - Rescue	8	0.24%
Orrington Fire Dept.	2	0.06%
Orrs/Bailey Island Fire Department	2	0.06%
Osborn Municipal Vol Fire Dept	1	0.03%
Otisfield Fire Department	2	0.06%
Oxford Fire Rescue	5	0.15%
PACE Paramedic Service	56	1.65%
Passamaquoddy Fire & Rescue	18	0.53%
Patten Ambulance Service	3	0.09%
Peninsula Ambulance Corps	29	0.85%
Petit Manan Ambulance	2	0.06%
Phippsburg Fire & Rescue Department	1	0.03%
Pleasant River Ambulance Service	7	0.21%
Poland Fire Rescue	16	0.47%
Presque Isle Fire Department	33	0.97%
Raymond Rescue	8	0.24%
Redington Fairview EMS	56	1.65%
Richmond Fire Department	7	0.21%
Rockland Fire & EMS	19	0.56%
Rumford Fire Department	6	0.18%
Sabattus Fire Rescue	3	0.09%
Saco Fire Department	33	0.97%
Sacopee Rescue Inc	9	0.27%
Sanford Fire Dept Ambulance Service	32	0.94%
Scarborough Fire Department	17	0.50%
Searsmont Rescue	1	0.03%
Searsport Ambulance Service	4	0.12%
Sebago EMS	3	0.09%
Sebasticook Valley Hospital Ambulance	33	0.97%
Shapleigh Rescue Squad	4	0.12%
Sidney Rescue	3	0.09%
Sipayik Ambulance Corps	1	0.03%
South Portland Fire Rescue	46	1.36%
South Thomaston Ambulance Service	2	0.06%
Southwest Harbor / Tremont Ambulance Service	1	0.03%
St George Ambulance	6	0.18%
Standish Fire - EMS	16	0.47%
Stewart's Ambulance	40	1.18%
Stockton Springs Ambulance Service	2	0.06%
Stoneham Rescue Service	3	0.09%
Thomaston Ambulance	6	0.18%
Three Rivers Ambulance Service	12	0.35%

<b>Service</b>	<b>Responses</b>	<b>%</b>
Topsham Fire - EMS	17	0.50%
Town of Lyman DBA / Goodwins Mills Fire-Rescue	4	0.12%
Trackside Ambulance Service	1	0.03%
Turner Rescue	16	0.47%
Union Fire-Rescue	8	0.24%
United Ambulance Service	214	6.31%
Unity Volunteer Ambulance Corps	8	0.24%
University Volunteer Ambulance Corps	4	0.12%
Upper Kennebec Valley Ambulance	3	0.09%
Van Buren Ambulance Service	5	0.15%
Vinalhaven Ambulance	1	0.03%
Waldoboro Emergency Medical Services	25	0.74%
Warren Rescue	3	0.09%
Waterboro Fire Dept Rescue	15	0.44%
Waterville Fire Department	21	0.62%
WCEMSA dba Downeast EMS	19	0.56%
Wells Emergency Medical Services	18	0.53%
Wells Fire Department Rescue	1	0.03%
Westbrook Fire Rescue	41	1.21%
Windham Fire Rescue	27	0.80%
Winslow Fire Department Rescue	8	0.24%
Winterport Volunteer Ambulance Service	6	0.18%
Winthrop Ambulance Service	32	0.94%
Wiscasset Ambulance Service	13	0.38%
Woodstock First Responders	2	0.06%
Woolwich Fire Department	3	0.09%
Yarmouth Fire Rescue	24	0.71%
York Ambulance Association Inc	38	1.12%
York Beach Volunteer Fire Department	10	0.29%
<b>Grand Total</b>	<b>3394</b>	<b>100.00%</b>

*\*There were 174 patients who had more than 1 service respond.*

-End of Report-

*This project is supported by the Health Resources and Services Administration (HRSA), Maternal and Child Health Bureau (MCHB), Emergency Medical Services for Children (EMSC) State Partnership grant program, Grant # H33MC31622. This information or content and conclusions are those of the author and should not be construed as the official position or policy of, nor should any endorsements be inferred by HRSA, HHS or the U.S. Government.*