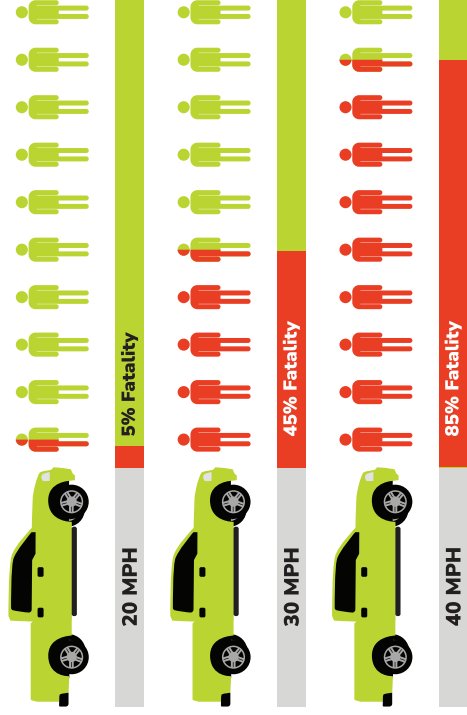


# The Faster You Go, the Higher the Risk.



Speed kills. A crash at 20 miles per hour has only a 5% chance of causing a fatality. But at 40 miles per hour, a crash has an 85% chance of causing a fatality.

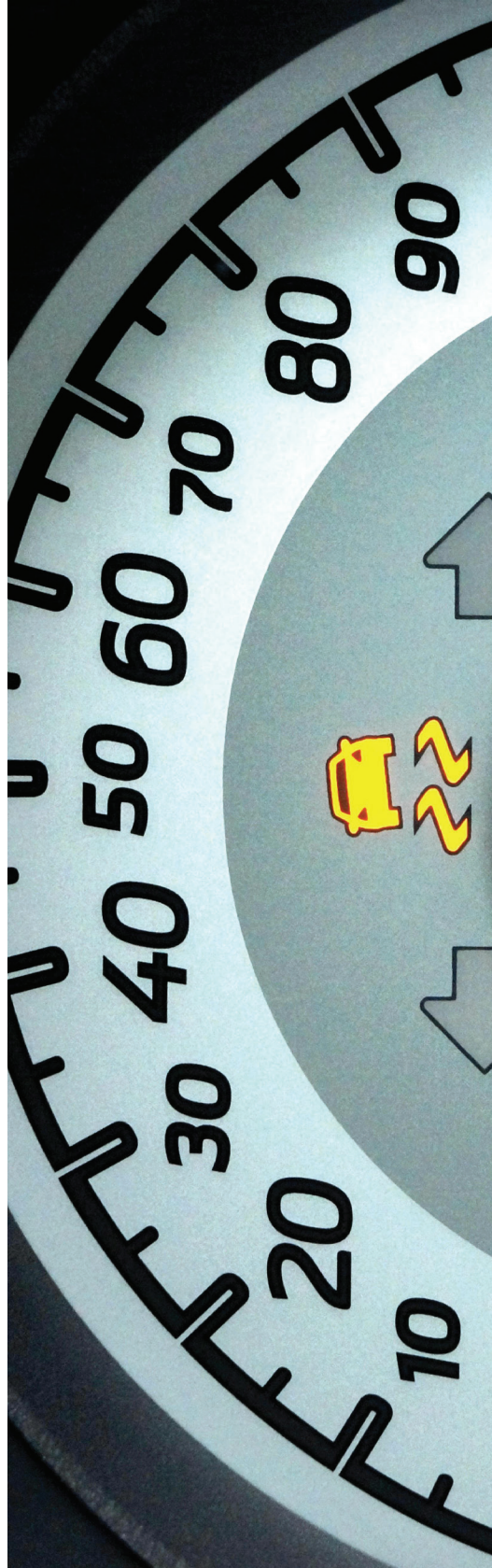


Find more information at  
<https://www.maine.gov/dps/bhs/>

Follow Us:



Printed using federal NHTSA funds



## No Need to Speed

## Fast Facts

# Faster Doesn't Mean Safer.

We all know the frustrations of modern life and juggling a busy schedule. But speed limits are designed to protect all road users.

Speeding isn't just an interstate-related issue: In fact, in 2023, 88% of all speeding-related traffic fatalities in the United States occurred on routes other than interstates.

Speeding is involved in about 1/3 of all motor vehicle deaths.

Speeding endangers all of the people on the road.



There were 193 speed-related fatalities between 2019 and 2023. These fatalities made up approximately 25% of all highway fatalities.

Speeding leads to more severe crashes and more severe injuries.



## What Drives Speeding?

Speeding is a type of aggressive driving behavior. It may be motivated by:

### Traffic

Traffic congestion is one of the most frequently mentioned contributing factors to aggressive driving. Drivers may respond by speeding, changing lanes frequently, or becoming angry at anyone who they believe impedes their progress.

### Running Late

Some people drive aggressively because they have too much to do and are "running late" for work, school, their next meeting, lesson, soccer game, or other appointment.

### Anonymity

A motor vehicle insulates the driver from the world. This can lead to some people feeling less constrained in their behavior.

## Dealing with Speeding and Aggressive Drivers

Speeding and aggressive driving affects everyone on the road, including other drivers, pedestrians, and bicyclists. Here are some tips for when you encounter speeders on the road:

If you are in the left lane and someone wants to pass, **move over and let them by.**

**Give speeding drivers plenty of space.** Speeding drivers may lose control of their vehicle more easily.

Adjust your driving accordingly. Speeding is tied to aggressive driving. If a speeding driver is tailgating you or trying to engage you in risky driving, use judgment to **safely steer your vehicle out of the way.**

**Call the police if you believe a driver is following you or harassing you.**