

Trace and Fire Debris Evidence Collection

TRACE

Hairs and Fibers

- Hairs and fibers should be collected using tweezers
- Do NOT place a hair or fiber into an envelope by itself:
 - o Collect hairs and fibers using a gel lift, sticky side of a sticky note, or a druggist fold
 - For information about how to fold a druggist fold, please see [How to Fold a Druggist Fold](#)
- When submitting unknown fibers, please also submit largest available sample of known reference fibers if possible (ex. entire shirt, large cutting of carpet or car mats, etc.)

Paints

Questioned Paint

- For paint deposited on an object, submit whole object to lab if possible (preferred)
 - o OR cut out portion of object containing paint deposit and submit to lab
 - OR scrape and collect as much of the paint deposit as possible (aim for large pieces) and package in druggist fold

Known Paint Reference

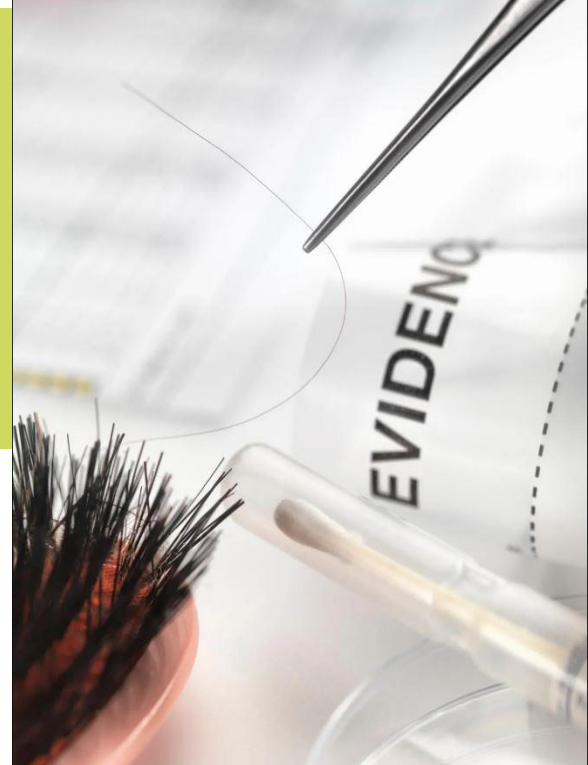
- Collect quarter-size sample of any reference paint, making sure to include ALL layers of paint.

★ Known samples should be collected as close to area of impact as possible



For more information about trace evidence:
Download the '[Trace Evidence Collection](#)' mobile app published by the FTCOE and FBI.

Available for [iPhone](#) and [Android](#) devices!



Fire Debris

ALL Fire Debris cases should be handled by the Fire Marshal's Office.

For assistance with fire debris cases, contact the Fire Marshal's Office via dispatch and provide a phone number where you can be reached at the scene.

Evidence Collection:

- Fire Debris should be packaged in *unused* paint cans or mason jars ONLY
- Fill no more than two-thirds of the container – do not overfill
- Do NOT air dry the material, package wet as instructed above