

Characteristics — 2014

Victim–Offender Relationship

Non-Stranger to Non-Stranger	86.4%
Stranger to Stranger	9.1%
Unknown	4.5%

Type of Weapon Used

Firearm	31.8%
Knife/Cutting Instrument	18.2%
Other Dangerous Weapon	9.1%
Hands, Fists, Feet	27.3%
Other/Undetermined	16.7%

Months of Highest Occurrence

December	22.7%
July	18.2%
May, September	13.6%

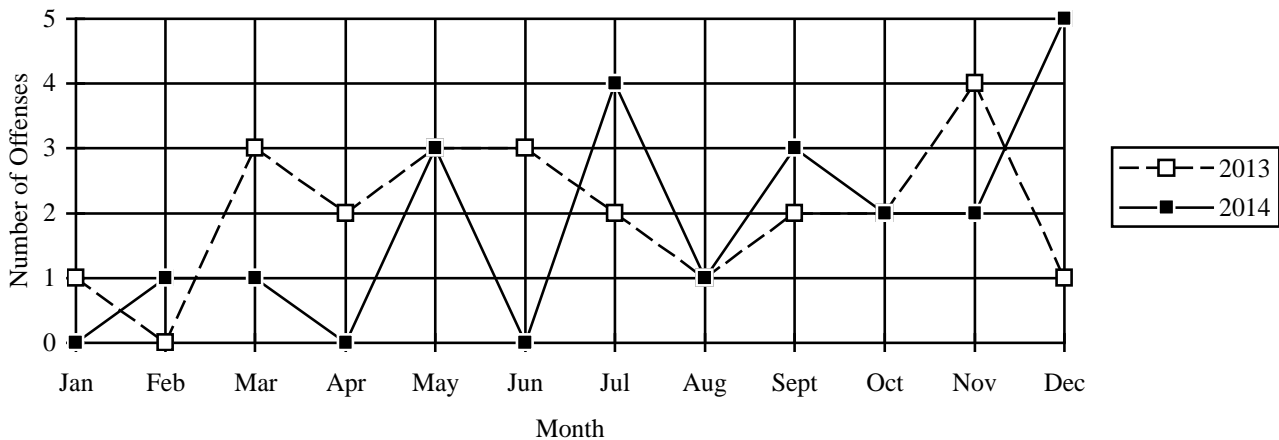
Value of Property Stolen during Offense

Total	\$1,500.00
Per Incident Average.....	\$68.18

Clearance Rate

21 Offenses Cleared	95.5%
Arrests/Crime Ratio.....	0.59

**Murder & Non-Negligent Manslaughter — Comparative Data
2013–2014**



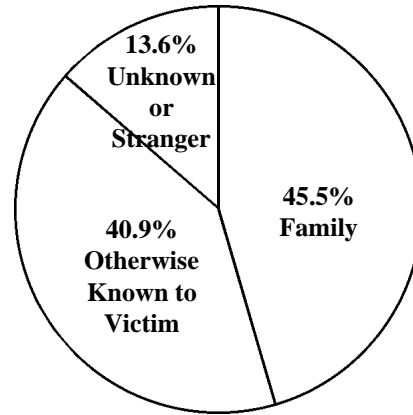
Profile of Persons Arrested — 13 Arrests

Age	Sex
17 and under.....	Male.....
18–24.....	Female.....
25–29.....	
30–34.....	
35–39.....	
40 and over.....	

2 offenders committed suicide

Murder Distribution by Relationship (Victim to Offender)

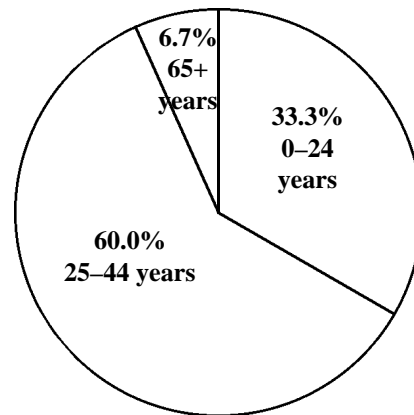
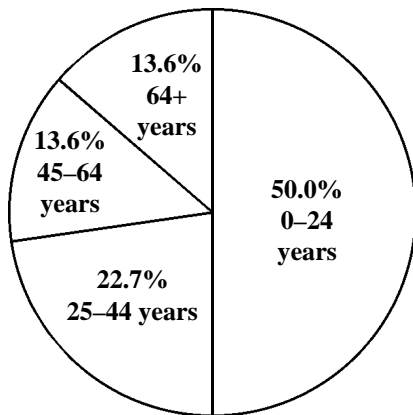
Relationship*	Number	% of Total
Wife	2	9.1%
Son	4	18.2%
Daughter	1	4.0%
Grandmother	1	4.5%
Father	1	4.5%
Mother-in-law	1	4.5%
Total Family	10	45.5%
Girlfriend/Boyfriend	3	13.6%
Child in Care	1	4.5%
Acquaintance	5	22.7%
Stranger	2	9.1%
Unknown	1	4.5%
Total Other	12	54.5%
TOTAL	22	100.0%



*Number of relationships may not agree with number of victims due to instances of multiple offenders or multiple victims.

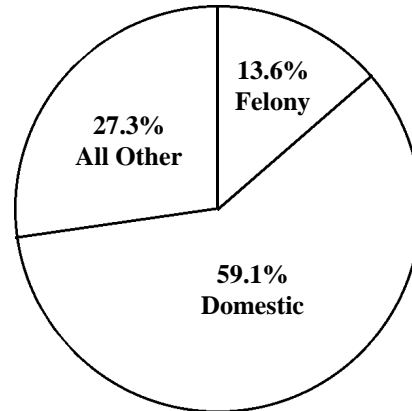
Murder Distribution by Age and Sex

Age of Victims	Male	Female	Total	Age of Offenders	Male	Female	Total
0-14 years	6	2	8	0-14 years	—	—	—
15-24 years	3	—	3	15-24 years	5	—	5
25-34 years	—	2	2	25-34 years	6	—	6
35-44 years	1	2	3	35-44 years	3	—	3
45-54 years	1	—	1	45-54 years	—	—	—
55-64 years	1	1	2	55-64 years	—	—	—
65+ years	1	2	3	65+ years	1	—	1
Total	13	9	22	Total	15	—	15



Murder Distribution by Circumstances

Circumstance**	Number	% of Total
Burglary	1	4.5%
Arson	2	9.1%
Felony Total*	3	13.6%
Domestic Conflict	13	59.1%
Child Abuse/Neglect	1	4.5%
Other	4	18.2%
Unknown	1	4.5%
Other than Felony Total	19	86.4%
TOTAL	22	100.0%

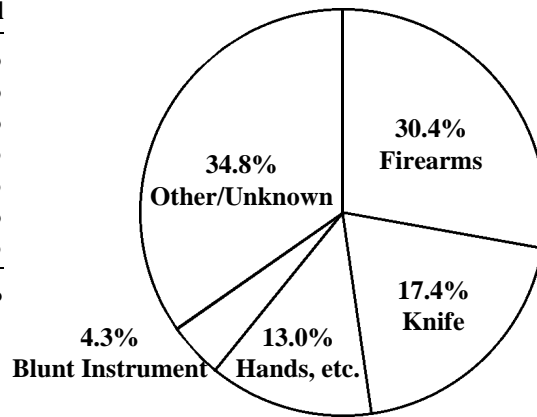


*Felony murder is defined as a killing which occurs in conjunction with the commission of another crime such as a robbery, arson, sexual assault or other felonious activities.

**Due to the unlimited set of possible circumstances surrounding homicides, it is difficult to provide a clear-cut or precise statistical category. In the intent of uniformity, the number of circumstance categories has been kept to a minimum. Caution is suggested in drawing generalizations from the data without more deliberate analysis. This table makes no attempt to analyze the motives of offenders, but rather to display general circumstances surrounding the events.

Murder Distribution by Weapon

Weapon	Number	% of Total
Firearm	7	30.4%
Knife, Cutting Instrument	4	17.4%
Hands, Fists, Feet	3	13.0%
Blunt Instrument	1	4.3%
Fire/Smoke Inhalation	2	8.7%
Strangled	3	13.0%
Other/Unknown	3	13.0%
Total	23	100.0%



FORCIBLE RAPE

Forcible rape is the carnal knowledge of a female forcibly and against her will.

“A person is guilty of gross sexual assault if that person engages in a sexual act (direct genital contact) with another person and the person submits as a result of compulsion.”
M.R.S.A. Title 17-A, § 253

This category is broken down into two categories: Rape by Force, and Attempted Forcible Rape. Carnal abuse without force (statutory rape) and other sex offenses are not included.

Forcible rape differs from other violent crimes in that the victim, in many cases, is reluctant to report the offense to police. The investigation by police, medical examination, court procedure, embarrassment and fear of any accompanying stigma have a deterrent effect on the victim’s willingness to make the offense known to police.

Maine has experienced increased availability in services such as rape crisis centers providing 24-hour hot lines and counselors, witness/victim assistants in district attorneys’ offices, improved medical practices and increased sensitivity by law enforcement personnel. The increased number of offenses identified in this report may be, in part, influenced by the increasing confidence of victims in the criminal justice system.

Crime Clock



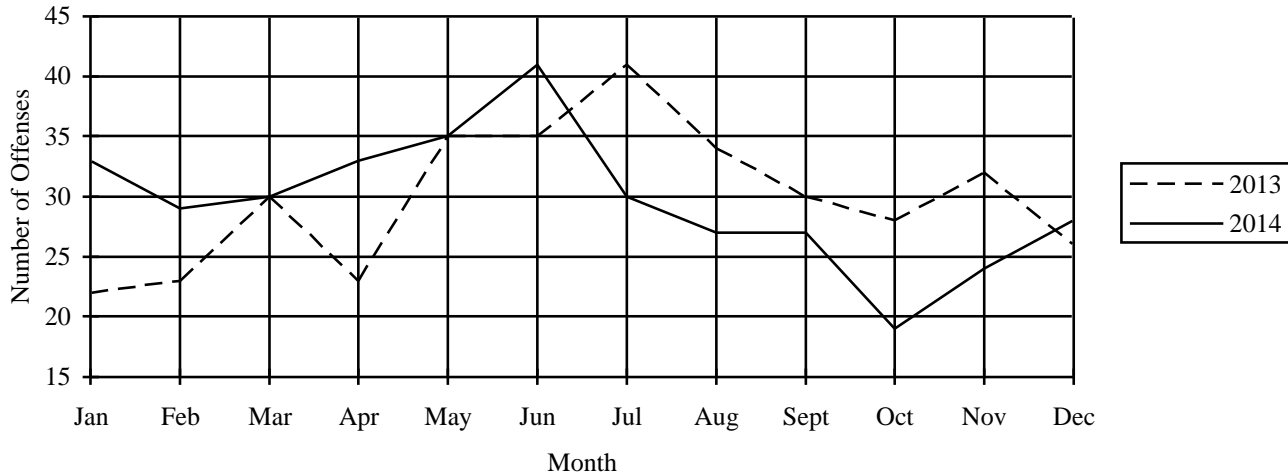
<i>Trend</i>						
Year	2010	2011	2012	2013	2014	2010–2014
Number reported	389	391	368	359	356	
% change from previous year	4.0%	0.5%	-5.9%	-2.4%	-0.8%	% change -8.5%
Rate per 1,000	0.29	0.29	0.28	0.27	0.27	
% change from previous year	3.6%	—	-3.4%	-3.5%	-4.4%	% change -7.7%

<i>Characteristics — 2014</i>	
Type of Offense	
Rape by Force	95.5%
Attempts to Rape	4.5%
Months of Highest Occurrence	
June	11.5%
May	9.8%
January, April	9.3%
Value of Property Stolen during Offense	
Total	\$880.00
Per Incident Average	\$2.47
Clearance Rate	
145 Offenses Cleared	40.7%
Arrests/Crime Ratio.....	0.19

<i>Profile of Persons Arrested</i>	
68 Arrests	
Age	
17 and under	14.7%
18–24	33.8%
25–29	22.1%
30–34	11.8%
35–39	5.9%
40 and over	11.8%
Sex	
Male	98.5%
Female	1.5%

<i>Rape by Type of Offense, 2013–2014</i>			
	2013	2014	% change
Forcible Rape	354	340	-4.0%
Attempted Rape	5	16	220.0%
Totals	359	356	-0.8%

Rapes — Comparative Data 2013–2014



ROBBERY

Robbery is defined by UCR as “the felonious and forcible taking of the property of another against his will by violence or by putting him in fear.” All attempts to rob are included in the UCR report.

“1. A person is guilty of robbery if he commits or attempts to commit theft and at the time of his actions: A. He recklessly inflicts bodily injury on another; B. He threatens to use force against any person present with the intent (1) to prevent or overcome resistance to the taking of the property, ...; or (2) to compel the person in control of the property to give it up ...; C. He uses physical force on another with the intent enumerated in paragraph B, subparagraphs (1) and (2); D. He intentionally inflicts or attempts to inflict bodily injury on another; or E. He or an accomplice to his knowledge is armed with a dangerous weapon ...” M.R.S.A. Title 17-A, § 65, 1

Crime Clock

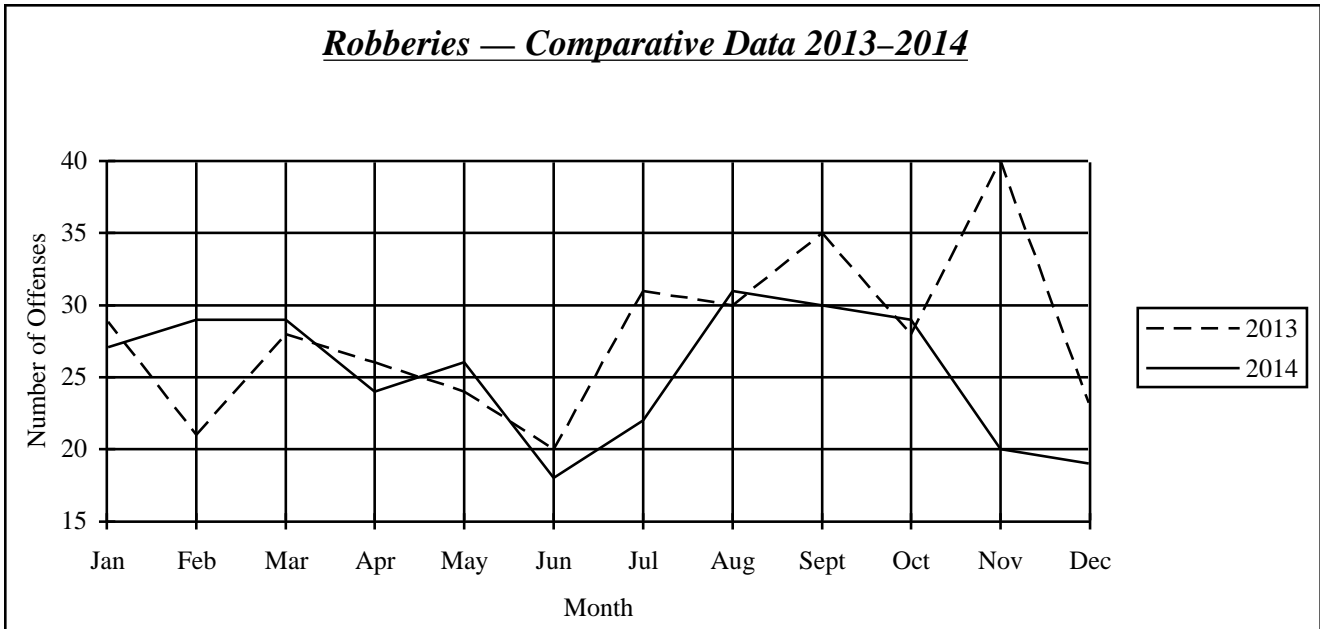


Trend

Year	2010	2011	2012	2013	2014	2010–2014
Number reported	416	370	421	335	304	
% change from previous year	4.5%	-11.1%	13.8%	-20.4	-9.3%	% change -26.9%
Rate per 1,000	0.31	0.28	0.32	0.25	0.23	
% change from previous year	3.3%	-9.7%	14.3%	-21.2%	-8.6%	% change -26.3%

Characteristics — 2014

Type of Weapon Used	Months of Highest Occurrence
Firearm16.8%	August10.2%
Knife/Cutting Instrument14.1%	September9.9%
Other Dangerous Weapon16.1%	Feb., March, Oct.9.5%
Hands, Fists, Feet53.0%	
	Value of Property Stolen during Offense
Place of Occurrence	Total\$253,238.00
Street, Alley24.0%	Per Incident Average\$833.02
Business Establishment30.9%	
Residence28.3%	Clearance Rate
Banks7.2%	167 Offenses Cleared54.9%
Miscellaneous9.5%	Arrests/Crime Ratio0.53



Profile of Persons Arrested
160 Arrests

Age

17 and under	3.1%
18–24	30.6%
25–29	16.9%
30–34	20.6%
35–39	12.5%
40 and over	16.3%

Sex

Male	78.1%
Female	15.4%

Robbery by Weapon Type, 2013–2014

	2013	2014	% change
Firearm	74	51	-31.1%
Knife	41	43	4.9%
Other Weapon	41	49	19.5%
Strong Arm	179	161	-10.1%
Totals	335	304	-9.3%

Robbery by Classification, 2013–2014

Classification	Number of Offenses			Value Stolen		
	2013	2014	% change	2013	2014	% change
Highway	105	73	-30.5%	\$22,419	\$24,061	7.3%
Commercial House	41	55	34.1%	\$35,744	\$34,647	-3.1%
Gas/Service Station	6	2	-66.7%	\$4,960	\$500	-89.9%
Convenience Store	29	37	27.6%	\$7,876	\$6,459	-18.0%
Residence	77	86	11.7%	\$80,561	\$93,471	16.0%
Bank/Lending Inst.	17	22	29.4%	\$54,168	\$73,075	34.9%
Miscellaneous	60	29	-51.7%	\$133,005	\$21,025	-84.2%
Totals	335	304	-9.3%	\$338,733	\$253,238	-25.2%

<i>Robbery Type by County</i>									
County		Highway	Commercial House	Gas Station	Convenience Store	Residence	Bank	Misc.	Total
Androscoggin									
	2014	7	3	—	8	16	6	1	41
	2013	7	8	—	4	12	1	4	36
Aroostook									
	2014	1	—	—	1	2	—	—	4
	2013	—	—	—	—	2	—	—	2
Cumberland									
	2014	26	25	1	9	21	—	11	93
	2013	47	14	3	11	21	6	18	120
Franklin									
	2014	—	—	—	—	—	1	—	1
	2013	—	1	—	1	1	—	—	3
Hancock									
	2014	—	2	—	—	—	1	—	3
	2013	—	1	—	1	1	—	1	4
Kennebec									
	2014	11	9	1	6	12	4	2	45
	2013	14	2	—	1	10	2	7	36
Knox									
	2014	—	2	—	2	—	—	—	4
	2013	—	—	—	—	1	1	—	2
Lincoln									
	2014	1	—	—	—	1	—	1	3
	2013	—	—	—	—	1	—	2	3
Oxford									
	2014	1	—	—	—	—	3	1	5
	2013	3	—	—	1	1	—	—	5
Penobscot									
	2014	14	6	—	1	7	4	3	35
	2013	22	10	2	3	14	2	3	56
Piscataquis									
	2014	—	—	—	—	—	—	—	0
	2013	1	—	—	1	1	—	—	3
Sagadahoc									
	2014	—	—	—	—	1	—	1	2
	2013	—	1	—	—	1	—	—	2
Somerset									
	2014	3	2	—	2	7	2	2	18
	2013	3	—	—	—	1	—	—	4
Waldo									
	2014	—	—	—	—	3	—	1	4
	2013	—	—	—	—	—	—	—	0
Washington									
	2014	—	—	—	—	2	—	—	2
	2013	—	1	—	—	2	—	—	3
York									
	2014	9	6	—	8	14	1	6	44
	2013	8	3	1	6	8	5	25	56

AGGRAVATED ASSAULT

An aggravated assault is an attempt or offer, with unlawful force or violence, to do physical injury to another. This type of assault is usually accompanied by the use of a weapon or other means likely to produce death or serious bodily injury. Attempts are included since it is not necessary that an injury result when a gun, knife, or other weapon is used which could and probably would result in serious personal injury if the crime is successfully completed. Assaults with personal weapons (hands, fists, feet) are scored as aggravated if there is personal injury requiring more than simple first aid to treat.

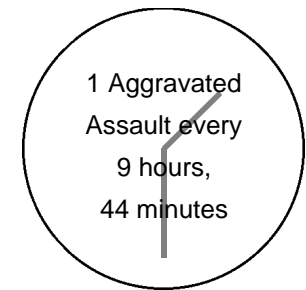
Aggravated Assault: "1. A person is guilty of aggravated assault if he ... causes: A. Serious bodily injury to another; or, B. Bodily injury to another with use of a dangerous weapon; or, C. Bodily injury to another under circumstances manifesting extreme indifference to the value of human life." M.R.S.A. Title 17-A, § 208

Assault while Hunting: "1. A person is guilty of assault while hunting if ... he, with criminal negligence, causes bodily injury to another with the use of a dangerous weapon." M.R.S.A. Title 17-A, § 208-A

Assault on an Officer: "1. A person is guilty of assault on an officer if: A. ... causes bodily injury to a law enforcement officer while the officer is in the performance of his official duties; or, B. While in custody in a penal institution or other facility pursuant to an arrest or ... court order, he commits an assault on a member of the staff of the institution ..." M.R.S.A. Title 17-A, § 752-A

Not included in this class are simple (non-aggravated) assaults. Simple assaults are non-index offenses, although a record is kept of these assaults on an "offenses known to police" form. During 2014 there were 10,044 simple assaults reported (-6.5% from 2013), with a clearance rate of 73.0%. These simple assaults are included in the report of domestic assaults, and assaults on law enforcement officers.

Crime Clock



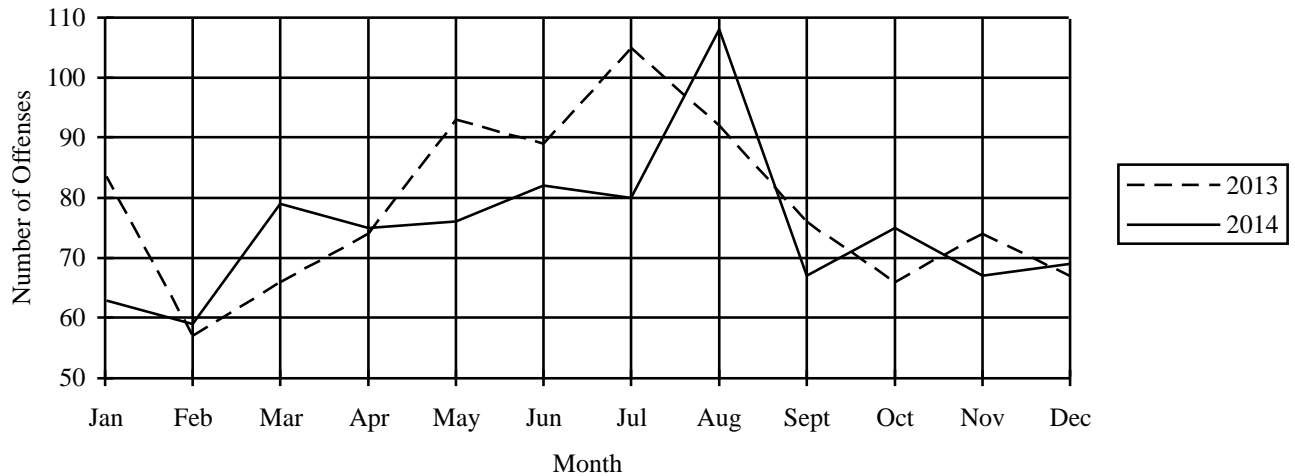
<i>Trend</i>						
Year	2010	2011	2012	2013	2014	2010–2014
Number reported	760	843	803	943	900	
% change from previous year	2.4%	10.9%	-4.7%	17.4%	-4.6%	% change 18.4%
Rate per 1,000	0.57	0.63	0.60	0.71	0.68	
% change from previous year	1.8%	10.5%	-4.8%	18.3%	-4.7%	% change 18.7%

<i>Characteristics — 2014</i>	
Type of Weapon Used	
Firearms	6.4%
Knife/Cutting Instrument	15.9%
Other Dangerous Weapons	23.3%
Hands, Fists, Feet	54.3%
Months of Highest Occurrence	
August	12.0%
June	9.1%
July	8.9%
Clearance Rate	
713 Offenses Cleared	79.2%
Arrests/Crime Ratio	0.58

<i>Profile of Persons Arrested</i>	
521 Arrests	
Age	
17 and under	7.9%
18–24	25.3%
25–29	17.3%
30–34	12.9%
35–39	8.8%
40 and over	27.8%
Sex	
Male	84.6%
Female	15.4%

<i>Aggravated Assault by Weapon Type, 2013–2014</i>					
	Firearm	Knife	Other Weapon	Strong Arm	Totals
2013	40	175	253	475	943
2014	58	143	210	489	900
% change	45.0%	-18.3%	-17.0%	2.9%	-4.6%

Aggravated Assaults — Comparative Data 2013–2014



DOMESTIC VIOLENCE

Due to problems of abuse and domestic violence between family or household members, the 109th Maine Legislature enacted a law entitled “An Act Concerning Abuse between Household and Family Members.” The law, Chapter 578 of the Public Laws of 1979, mandates the reporting of domestic violence data by law enforcement agencies and the collection of such data (Title 19, § 770 [1]) by the Uniform Crime Reporting Unit, State Bureau of Identification, Department of Public Safety.

During 2014:

- Of a grand total of 10,944 reported assaults, 5,067 or 46.3% were identified as occurring between household

or family members.

- Domestic assaults decreased 7.7% (420 offenses) from the 2013 figure of 5,487.
- Law enforcement agencies cleared 4,234 domestic assaults for a clearance rate of 83.6%.
- Of the 5,067 domestic assaults, 96.9% involved personal weapons (hands, fists, feet).

Crime Clock



Breakdown of Reported Domestic Assaults by County, 2013–2014

County	2013 Number of Offenses	2013 Percent of Total	2014 Number of Offenses	2014 Percent of Total	Percent Change Offenses
Androscoggin	653	11.9%	619	12.2%	-5.2%
Aroostook	199	3.6%	177	3.5%	-11.1%
Cumberland	935	17.0%	802	15.8%	-14.2%
Franklin	165	3.0%	162	3.2%	-1.8%
Hancock	97	1.8%	98	1.9%	1.0%
Kennebec	579	10.6%	630	12.4%	8.8%
Knox	131	2.4%	92	1.8%	-29.8%
Lincoln	120	2.2%	126	2.5%	5.0%
Oxford	246	4.5%	181	3.6%	-26.4%
Penobscot	493	9.0%	419	8.3%	-15.0%
Piscataquis	56	1.0%	42	0.8%	-25.0%
Sagadahoc	65	1.2%	67	1.3%	3.1%
Somerset	400	7.3%	390	7.7%	-2.5%
Waldo	116	2.1%	110	2.2%	-5.2%
Washington	127	2.3%	115	2.3%	-9.4%
York	1,105	20.1%	1,037	20.5%	-6.2%
Totals	5,487	100.0%	5,067	100.0%	-7.7%

<i>Domestic Violence Assaults Comparison Data 2013–2014</i>				
Situations/Relationships	2013 Number of Offenses	2013 % of Total	2014 Number of Offenses	2014 % of Total
Male Assault on Female				
Firearm	12	0.2	11	0.2
Knife, Cutting Instrument	28	0.5	22	0.4
Other Dangerous Weapon	51	0.9	37	0.7
Hands, Aggravated Injury	120	2.2	169	3.3
Hands, Not Aggravated	2,724	49.6	2,415	47.7
Total Male Assault on Female	2,935	53.5	2,654	52.4
Female Assault on Male				
Firearm	1	<.1	1	<.1
Knife, Cutting Instrument	18	0.3	14	0.3
Other Dangerous Weapon	20	0.4	21	0.4
Hands, Aggravated Injury	12	0.2	11	0.2
Hands, Not Aggravated	930	16.9	801	15.8
Total Female Assault on Male	981	17.9	848	16.7
Parent Assault on Child				
Firearm	1	<.1	4	<.1
Knife, Cutting Instrument	1	<.1	3	<.1
Other Dangerous Weapon	14	0.3	12	0.2
Hands, Aggravated Injury	76	1.4	64	1.3
Hands, Not Aggravated	508	9.3	500	9.9
Total Parent Assault on Child	600	10.9	583	11.5
Child Assault on Parent				
Firearm	2	<.1	1	<.1
Knife, Cutting Instrument	7	0.1	8	0.2
Other Dangerous Weapon	10	0.2	8	0.2
Hands, Aggravated Injury	10	0.2	16	0.3
Hands, Not Aggravated	399	7.3	444	8.8
Total Child Assault on Parent	428	7.8	477	9.4
All Other Domestic Assaults				
Firearm	2	<.1	2	<.1
Knife, Cutting Instrument	11	0.2	4	<.1
Other Dangerous Weapon	11	0.2	9	0.2
Hands, Aggravated Injury	59	1.1	52	1.0
Hands, Not Aggravated	460	8.4	438	8.6
Total Male Assault on Female	543	9.9	505	10.0
Grand Total All Domestic Assaults	5,487	100.0	5,067	100.0
Domestic Assaults/Type of Weapon				
Firearm	18	0.3	19	0.4
Knife, Cutting Instrument	65	1.2	51	1.0
Other Dangerous Weapon	106	1.9	87	1.7
Hands, Aggravated Injury	277	5.0	312	6.2
Hands, Not Aggravated	5,021	91.5	4,598	90.7
Total Domestic Assaults	5,487	100.0	5,067	100.0
Total All Domestic Assaults	5,487	47.0	5,067	46.3
Total All Reported Assaults	11,682	100.0	10,944	100.0