

Characteristics — 2012

Victim–Offender Relationship

Non-Stranger to Non-Stranger	79.2%
Stranger to Stranger	4.2%
Unknown	16.7%

Type of Weapon Used

Firearm	58.3%
Knife/Cutting Instrument	25.0%
Other Dangerous Weapon	—
Hands, Fists, Feet	16.7%
Other/Undetermined	—

Months of Highest Occurrence

July	16.7%
Aug., Oct.–Dec.	12.5%
Feb., March, May	8.3%

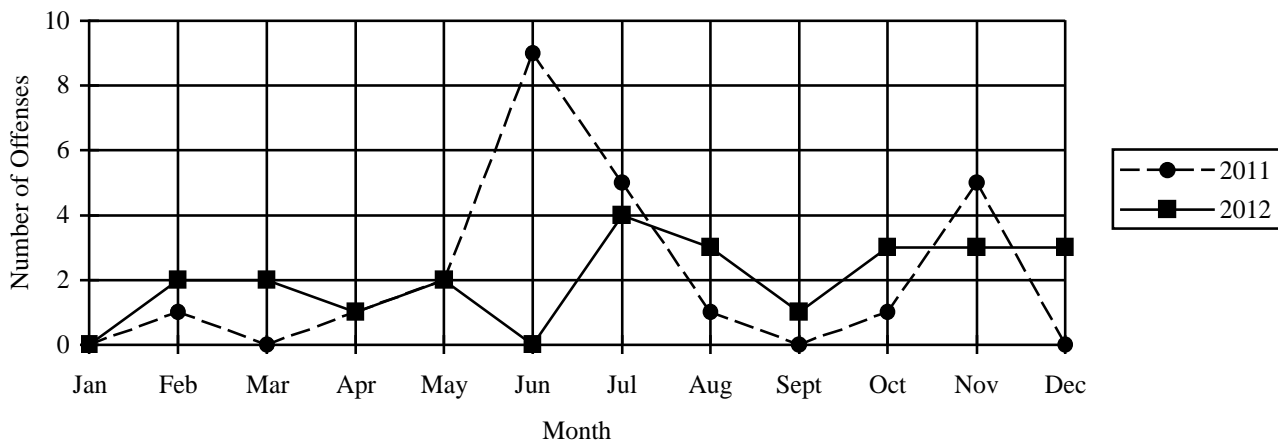
Value of Property Stolen during Offense

Total	\$.00
Per Incident Average.....	\$.00

Clearance Rate

29 Offenses Cleared	120.8%
Arrests/Crime Ratio.....	0.96

Murder & Non-Negligent Manslaughter — Comparative Data
2011–2012



Profile of Persons Arrested — 23 Arrests

Age

17 and under.....	4.3%
18–24.....	17.4%
25–29.....	4.3%
30–34.....	26.1%
35–39.....	4.3%
40 and over.....	43.5%

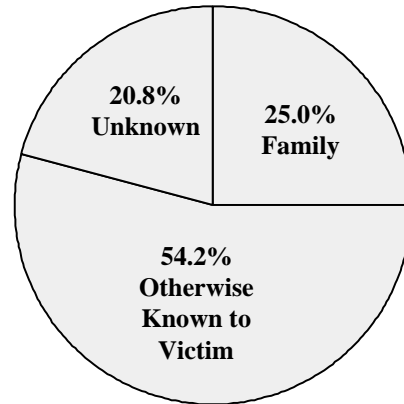
Sex

Male.....	78.3%
Female.....	21.7%

2 offenders committed suicide

Murder Distribution by Relationship (Victim to Offender)

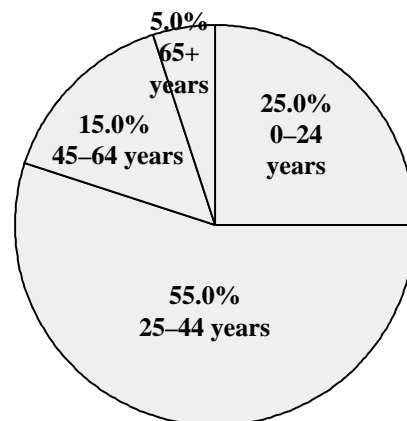
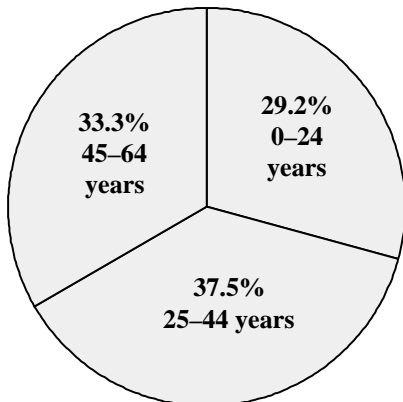
Relationship*	Number	% of Total
Wife	1	4.2%
Son	2	8.3%
Grandmother	1	4.2%
Father	1	4.2%
Uncle	1	4.2%
Total Family	6	25.0%
Girlfriend/Boyfriend	5	20.8%
Acquaintance	8	33.3%
Stranger	1	4.2%
Unknown	4	16.7%
Total Other	18	75.0%
TOTAL	24	100.0%



*Number of relationships may not agree with number of victims due to instances of multiple offenders or multiple victims.

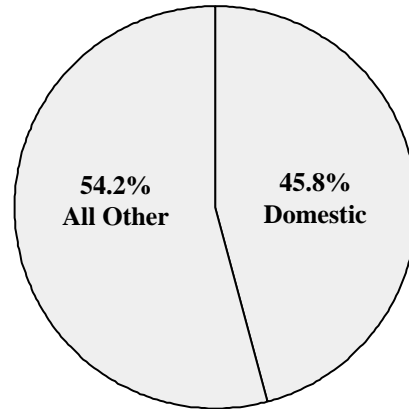
Murder Distribution by Age and Sex

Age of Victims	Male	Female	Total	Age of Offenders	Male	Female	Total
0–14 years	2	1	3	0–14 years	—	1	1
15–24 years	2	2	4	15–24 years	4	—	4
25–34 years	6	—	6	25–34 years	5	1	6
35–44 years	1	2	3	35–44 years	5	—	5
45–54 years	5	1	6	45–54 years	1	1	2
55–64 years	—	2	2	55–64 years	1	—	1
65+ years	—	—	—	65+ years	1	—	1
Total	16	8	24	Total	17	3	20



Murder Distribution by Circumstances

Circumstance**	Number	% of Total
Felony Total*	—	—
Domestic Conflict	11	45.8%
Child Abuse/Neglect	1	4.2%
Drug Related	5	20.8%
Other	6	25.0%
Unknown	1	4.2%
Other than Felony Total	24	100.0%
TOTAL	24	100.0%

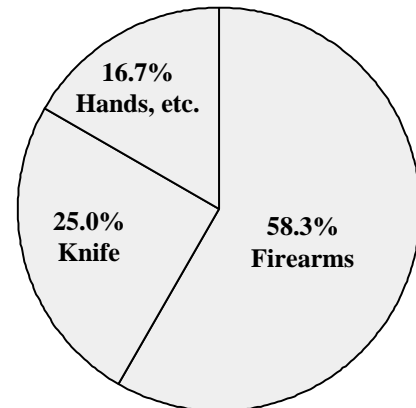


**Felony murder is defined as a killing which occurs in conjunction with the commission of another crime such as a robbery, arson, sexual assault or other felonious activities.*

***Due to the unlimited set of possible circumstances surrounding homicides, it is difficult to provide a clear-cut or precise statistical category. In the intent of uniformity, the number of circumstance categories has been kept to a minimum. Caution is suggested in drawing generalizations from the data without more deliberate analysis. This table makes no attempt to analyze the motives of offenders, but rather to display general circumstances surrounding the events.*

Murder Distribution by Weapon

Weapon	Number	% of Total
Firearm	14	58.3%
Knife, Cutting Instrument	6	25.0%
Hands, Fists, Feet	4	16.7%
Total	24	100.0%



FORCIBLE RAPE

Forcible rape is the carnal knowledge of a female forcibly and against her will.

“A person is guilty of gross sexual assault if that person engages in a sexual act (direct genital contact) with another person and the person submits as a result of compulsion.”
M.R.S.A. Title 17-A, § 253

This category is broken down into two categories: Rape by Force, and Attempted Forcible Rape. Carnal abuse without force (statutory rape) and other sex offenses are not included.

Forcible rape differs from other violent crimes in that the victim, in many cases, is reluctant to report the offense to police. The investigation by police, medical examination, court procedure, embarrassment and fear of any accompanying stigma have a deterrent effect on the victim’s willingness to make the offense known to police.

Maine has experienced increased availability in services such as rape crisis centers providing 24-hour hot lines and counselors, witness/victim assistants in district attorneys’ offices, improved medical practices and increased sensitivity by law enforcement personnel. The increased number of offenses identified in this report may be, in part, influenced by the increasing confidence of victims in the criminal justice system.

Crime Clock



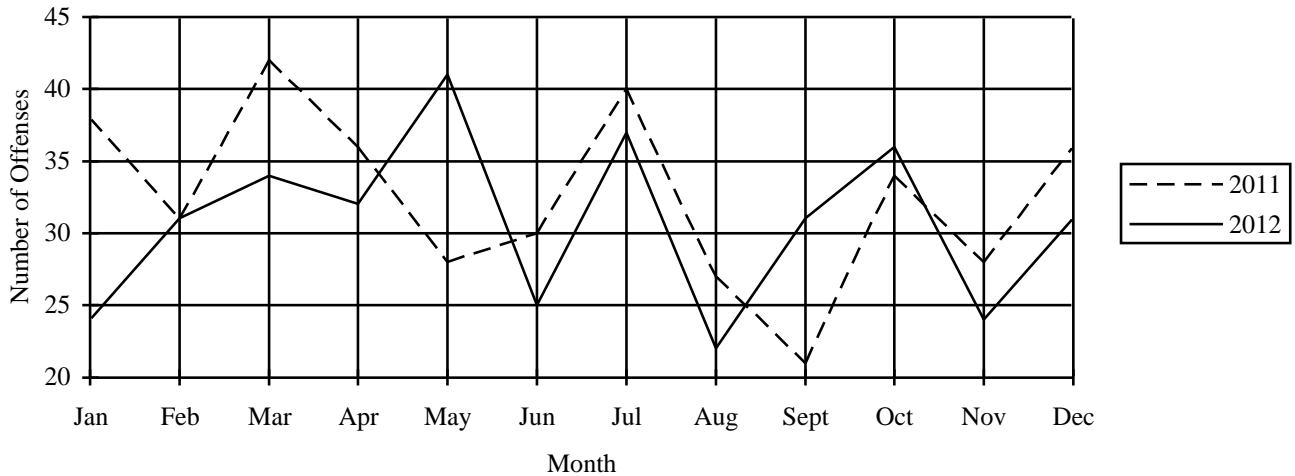
<i>Trend</i>						
Year	2008	2009	2010	2011	2012	2008–2012
Number reported	373	374	389	391	368	
% change from previous year	-5.1%	0.3%	4.0%	0.5%	-5.9%	% change -1.3%
Rate per 1,000	0.28	0.28	0.29	0.29	0.28	
% change from previous year	-6.7%	—	3.6%	—	-3.4%	% change —

<i>Characteristics — 2012</i>	
Type of Offense	
Rape by Force	97.0%
Attempts to Rape	3.0%
Months of Highest Occurrence	
May	11.1%
July	10.1%
October	9.8%
Value of Property Stolen during Offense	
Total	\$0.00
Per Incident Average	\$0.00
Clearance Rate	
145 Offenses Cleared	39.4%
Arrests/Crime Ratio.....	0.14

<i>Profile of Persons Arrested</i>	
53 Arrests	
Age	
17 and under	9.4%
18–24	34.0%
25–29	7.5%
30–34	15.1%
35–39	7.5%
40 and over	26.4%
Sex	
Male	98.1%
Female	1.9%

<i>Rape by Type of Offense, 2011–2012</i>			
	2011	2012	% change
Forcible Rape	376	357	-5.1%
Attempted Rape	15	11	-26.7%
Totals	391	368	-5.9%

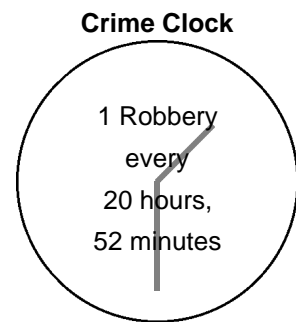
Rapes — Comparative Data 2011–2012



ROBBERY

Robbery is defined by UCR as “the felonious and forcible taking of the property of another against his will by violence or by putting him in fear.” All attempts to rob are included in the UCR report.

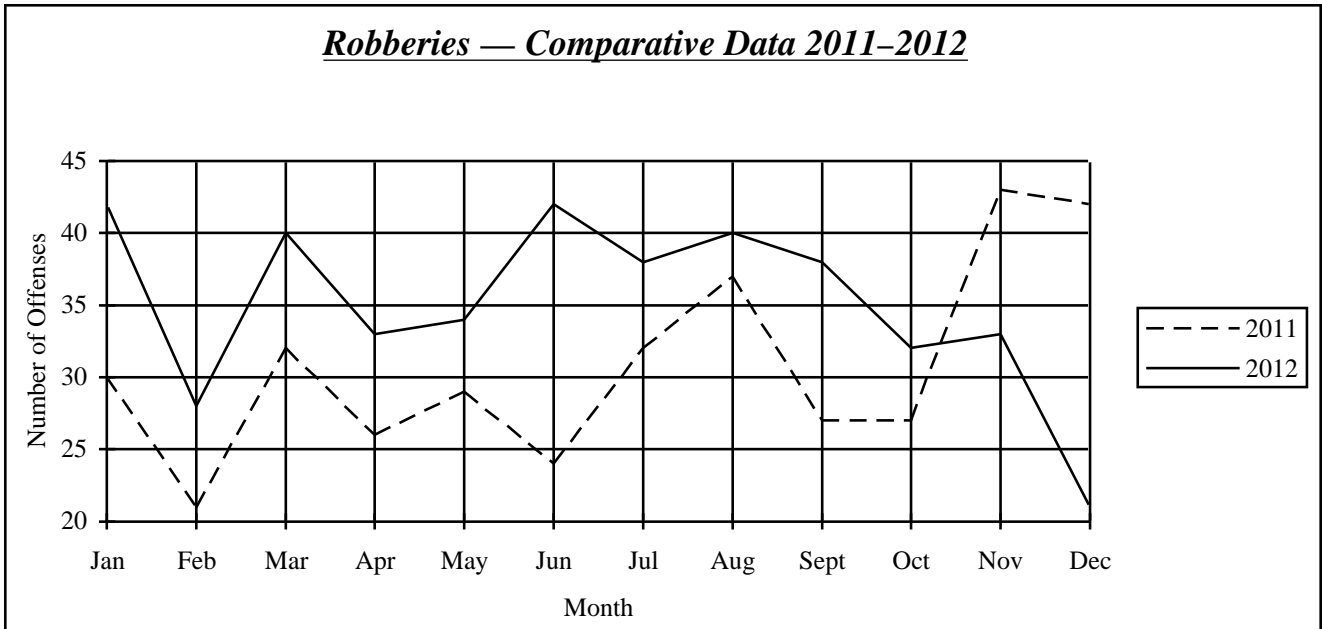
“1. A person is guilty of robbery if he commits or attempts to commit theft and at the time of his actions: A. He recklessly inflicts bodily injury on another; B. He threatens to use force against any person present with the intent (1) to prevent or overcome resistance to the taking of the property, ...; or (2) to compel the person in control of the property to give it up ...; C. He uses physical force on another with the intent enumerated in paragraph B, subparagraphs (1) and (2); D. He intentionally inflicts or attempts to inflict bodily injury on another; or E. He or an accomplice to his knowledge is armed with a dangerous weapon ... ” M.R.S.A. Title 17-A, § 65, 1



Trend						
Year	2008	2009	2010	2011	2012	2008–2012
Number reported	332	398	416	370	421	
% change from previous year	-4.9%	19.9%	4.5%	-11.1%	13.8%	
						% change 26.8%
Rate per 1,000	0.25	0.30	0.31	0.28	0.32	
% change from previous year	-3.0%	20.0%	3.3%	-9.7%	14.3%	
						% change 28.0%

Characteristics — 2012

Type of Weapon Used		Months of Highest Occurrence	
Firearm	21.9%	January, June	10.0%
Knife/Cutting Instrument	12.6%	March, August	9.5%
Other Dangerous Weapon	12.4%	July, September	9.0%
Hands, Fists, Feet	53.2%		
Place of Occurrence		Value of Property Stolen during Offense	
Street, Alley	23.0%	Total	\$415,098.00
Business Establishment	33.0%	Per Incident Average	\$985.98
Residence	24.5%	Clearance Rate	
Banks	4.3%	215 Offenses Cleared	51.1%
Miscellaneous	15.2%	Arrests/Crime Ratio	0.54



Profile of Persons Arrested 229 Arrests

Age	
17 and under	7.4%
18–24	31.4%
25–29	29.3%
30–34	15.3%
35–39	8.7%
40 and over	7.9%
Sex	
Male	84.7%
Female	15.3%

Robbery by Weapon Type, 2011–2012

	2011	2012	% change
Firearm	77	92	19.5%
Knife	73	53	-27.4%
Other Weapon	45	52	15.6%
Strong Arm	175	224	28.0%
Totals	370	421	13.8%

Robbery by Classification, 2011–2012

Classification	Number of Offenses			Value Stolen		
	2011	2012	% change	2011	2012	% change
Highway	91	97	6.6%	\$17,103	\$15,999	-6.5%
Commercial House	84	98	16.7%	\$68,093	\$248,733	265.3%
Gas/Service Station	2	8	300.0%	\$485	\$4,215	769.1%
Convenience Store	36	33	-8.3%	\$18,985	\$17,035	-10.3%
Residence	69	103	49.3%	\$37,333	\$63,688	70.6%
Bank/Lending Inst.	18	18	—	\$112,514	\$39,297	-65.1%
Miscellaneous	70	64	-8.6%	\$26,987	\$26,131	-3.2%
Totals	370	421	13.8%	\$281,500	\$415,098	47.5%

<i>Robbery Type by County</i>									
County		Highway	Commercial House	Gas Station	Convenience Store	Residence	Bank	Misc.	Total
Androscoggin									
	2012	10	15	2	7	25	2	3	64
	2011	7	19	1	6	16	—	12	61
Aroostook									
	2012	1	1	—	—	5	1	1	9
	2011	1	1	—	—	1	—	4	7
Cumberland									
	2012	43	23	1	16	29	5	20	137
	2011	40	38	1	13	14	4	27	137
Franklin									
	2012	—	1	—	1	—	—	2	4
	2011	—	2	—	—	1	—	1	4
Hancock									
	2012	1	3	—	—	1	—	1	6
	2011	—	—	—	—	1	—	—	1
Kennebec									
	2012	7	19	—	2	12	—	4	44
	2011	8	7	—	7	8	6	1	37
Knox									
	2012	1	4	—	—	1	—	—	6
	2011	2	4	—	—	1	—	3	10
Lincoln									
	2012	—	—	—	1	1	1	1	4
	2011	—	—	—	—	—	—	—	0
Oxford									
	2012	1	2	—	—	1	2	1	7
	2011	1	—	—	—	3	—	2	6
Penobscot									
	2012	19	15	4	2	11	—	10	61
	2011	16	7	—	5	10	4	5	47
Piscataquis									
	2012	1	1	—	—	—	—	—	2
	2011	—	—	—	—	—	—	—	0
Sagadahoc									
	2012	2	3	—	—	1	—	—	6
	2011	—	—	—	—	—	—	1	1
Somerset									
	2012	2	3	—	2	5	2	—	14
	2011	1	3	—	1	—	—	—	5
Waldo									
	2012	—	—	—	—	1	—	1	2
	2011	—	—	—	—	—	1	—	1
Washington									
	2012	—	—	—	—	—	—	1	1
	2011	1	—	—	—	2	—	2	5
York									
	2012	9	8	1	2	10	5	19	54
	2011	14	3	—	4	12	3	12	48

AGGRAVATED ASSAULT

An aggravated assault is an attempt or offer, with unlawful force or violence, to do physical injury to another. This type of assault is usually accompanied by the use of a weapon or other means likely to produce death or serious bodily injury. Attempts are included since it is not necessary that an injury result when a gun, knife, or other weapon is used which could and probably would result in serious personal injury if the crime is successfully completed. Assaults with personal weapons (hands, fists, feet) are scored as aggravated if there is personal injury requiring more than simple first aid to treat.

Aggravated Assault: "1. A person is guilty of aggravated assault if he ... causes: A. Serious bodily injury to another; or, B. Bodily injury to another with use of a dangerous weapon; or, C. Bodily injury to another under circumstances manifesting extreme indifference to the value of human life." M.R.S.A. Title 17-A, § 208

Assault while Hunting: "1. A person is guilty of assault while hunting if ... he, with criminal negligence, causes bodily injury to another with the use of a dangerous weapon." M.R.S.A. Title 17-A, § 208-A

Assault on an Officer: "1. A person is guilty of assault on an officer if: A. ... causes bodily injury to a law enforcement officer while the officer is in the performance of his official duties; or, B. While in custody in a penal institution or other facility pursuant to an arrest or ... court order, he commits an assault on a member of the staff of the institution ..." M.R.S.A. Title 17-A, § 752-A

Not included in this class are simple (non-aggravated) assaults. Simple assaults are non-index offenses, although a record is kept of these assaults on an "offenses known to police" form. During 2012 there were 11,796 simple assaults reported (-0.2% from 2011), with a clearance rate of 74.0%. These simple assaults are included in the report of domestic assaults, and assaults on law enforcement officers.

Crime Clock



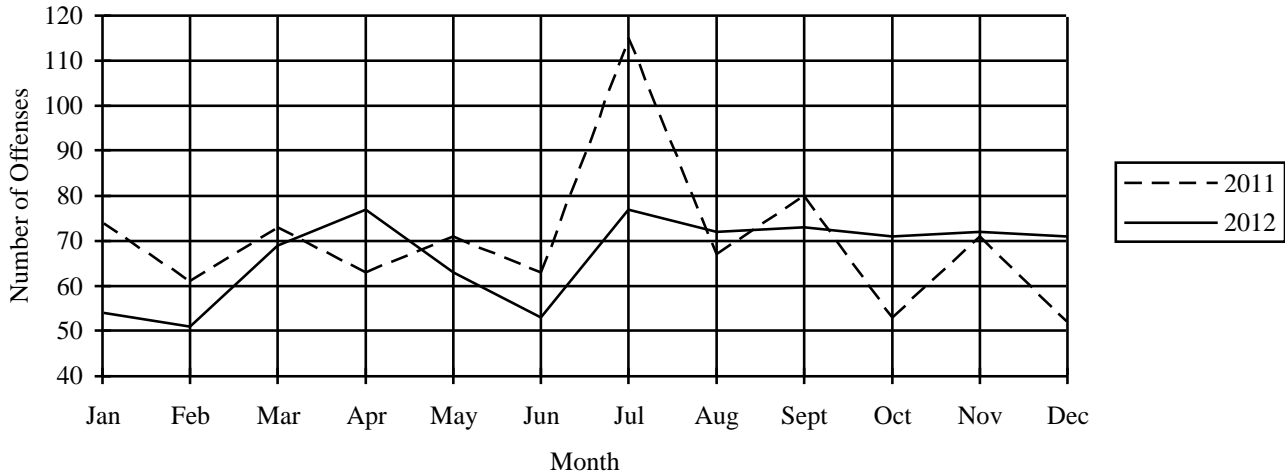
<i>Trend</i>						
Year	2008	2009	2010	2011	2012	2008-2012
Number reported	813	742	760	843	803	
% change from previous year	2.5%	-8.7%	2.4%	10.9%	-4.7%	% change -1.2%
Rate per 1,000	0.62	0.56	0.57	0.63	0.60	
% change from previous year	3.3%	-9.7%	1.8%	10.5%	-4.8%	% change -3.2%

<i>Characteristics — 2012</i>	
Type of Weapon Used	
Firearms	8.8%
Knife/Cutting Instrument	20.2%
Other Dangerous Weapons	28.1%
Hands, Fists, Feet	42.8%
Months of Highest Occurrence	
April, July	9.6%
September	9.1%
August, November	9.0%
Clearance Rate	
593 Offenses Cleared	73.8%
Arrests/Crime Ratio	0.58

<i>Profile of Persons Arrested</i>	
463 Arrests	
Age	
17 and under	9.7%
18-24	26.3%
25-29	18.4%
30-34	11.0%
35-39	9.1%
40 and over	25.5%
Sex	
Male	84.9%
Female	15.1%

<i>Aggravated Assault by Weapon Type, 2011-2012</i>					
	Firearm	Knife	Other Weapon	Strong Arm	Totals
2011	60	176	282	325	843
2012	71	162	226	344	803
% change	18.3%	-8.0%	-19.9%	5.8%	-4.7%

Aggravated Assaults — Comparative Data 2011–2012



DOMESTIC VIOLENCE

Due to problems of abuse and domestic violence between family or household members, the 109th Maine Legislature enacted a law entitled “An Act Concerning Abuse between Household and Family Members.” The law, Chapter 578 of the Public Laws of 1979, mandates the reporting of domestic violence data by law enforcement agencies and the collection of such data (Title 19, § 770 [1]) by the Uniform Crime Reporting Unit, State Bureau of Identification, Department of Public Safety.

During 2012:

- Of a grand total of 11,796 reported assaults, 5,593 or 47.4% were identified as occurring between household

or family members.

- Domestic assaults increased 4.3% (233 offenses) from the 2011 figure of 5,360.
- Law enforcement agencies cleared 4,610 domestic assaults for a clearance rate of 82.4%.
- Of the 5,593 domestic assaults, 97.0% involved personal weapons (hands, fists, feet).

Crime Clock



Breakdown of Reported Domestic Assaults by County, 2011–2012

County	2011 Number of Offenses	2011 Percent of Total	2012 Number of Offenses	2012 Percent of Total	Percent Change Offenses
Androscoggin	529	9.9%	588	10.5%	11.2%
Aroostook	203	3.8%	239	4.3%	17.7%
Cumberland	1,057	19.7%	1,039	18.6%	-1.7%
Franklin	144	2.7%	173	3.1%	20.1%
Hancock	134	2.5%	128	2.3%	-4.5%
Kennebec	662	12.4%	694	12.4%	4.8%
Knox	117	2.2%	95	1.7%	-18.8%
Lincoln	93	1.7%	119	2.1%	28.0%
Oxford	232	4.3%	223	4.0%	-3.9%
Penobscot	458	8.5%	513	9.2%	12.0%
Piscataquis	54	1.0%	38	0.7%	-29.6%
Sagadahoc	89	1.7%	70	1.3%	-21.3%
Somerset	223	4.2%	340	6.1%	52.5%
Waldo	118	2.2%	121	2.2%	2.5%
Washington	110	2.1%	136	2.4%	23.6%
York	1,137	21.2%	1,077	19.3%	-5.3%
Totals	5,360	100.0%	5,593	100.0%	4.3%

<i>Domestic Violence Assaults Comparison Data 2011–2012</i>				
Situations/Relationships	2011 Number of Offenses	2011 % of Total	2012 Number of Offenses	2012 % of Total
Male Assault on Female				
Firearm	15	0.3	12	0.2
Knife, Cutting Instrument	16	0.3	30	0.5
Other Dangerous Weapon	56	1.0	33	0.6
Hands, Aggravated Injury	90	1.7	82	1.5
Hands, Not Aggravated	2,740	51.1	3,018	54.0
Total Male Assault on Female	2,917	54.4	3,175	56.8
Female Assault on Male				
Firearm	3	<.1	8	0.1
Knife, Cutting Instrument	19	0.4	21	0.4
Other Dangerous Weapon	31	0.6	25	0.4
Hands, Aggravated Injury	16	0.3	15	0.3
Hands, Not Aggravated	1,074	20.0	1,079	19.3
Total Female Assault on Male	1,143	21.3	1,148	20.5
Parent Assault on Child				
Firearm	1	<.1	2	<.1
Knife, Cutting Instrument	4	<.1	1	<.1
Other Dangerous Weapon	13	0.2	11	0.2
Hands, Aggravated Injury	19	0.4	45	0.8
Hands, Not Aggravated	470	8.8	447	8.0
Total Parent Assault on Child	507	9.5	506	9.0
Child Assault on Parent				
Firearm	—	<.1	—	<.1
Knife, Cutting Instrument	5	<.1	1	<.1
Other Dangerous Weapon	7	0.1	2	<.1
Hands, Aggravated Injury	6	0.1	2	<.1
Hands, Not Aggravated	230	4.3	199	3.6
Total Child Assault on Parent	248	4.6	204	3.6
All Other Domestic Assaults				
Firearm	3	<.1	1	<.1
Knife, Cutting Instrument	15	0.3	7	0.1
Other Dangerous Weapon	14	0.3	11	0.2
Hands, Aggravated Injury	12	0.2	33	0.6
Hands, Not Aggravated	501	9.3	508	9.1
Total Male Assault on Female	545	10.2	560	10.0
Grand Total All Domestic Assaults	5,360	100.0	5,593	100.0
Domestic Assaults/Type of Weapon				
Firearm	22	0.4	23	0.4
Knife, Cutting Instrument	59	1.1	60	1.1
Other Dangerous Weapon	121	2.3	82	1.5
Hands, Aggravated Injury	143	2.7	177	3.2
Hands, Not Aggravated	5,015	93.6	5,251	93.9
Total Domestic Assaults	5,360	100.0	5,593	100.0
Total All Domestic Assaults	5,360	40.9	5,593	44.4
Total All Reported Assaults	13,102	100.0	12,599	100.0